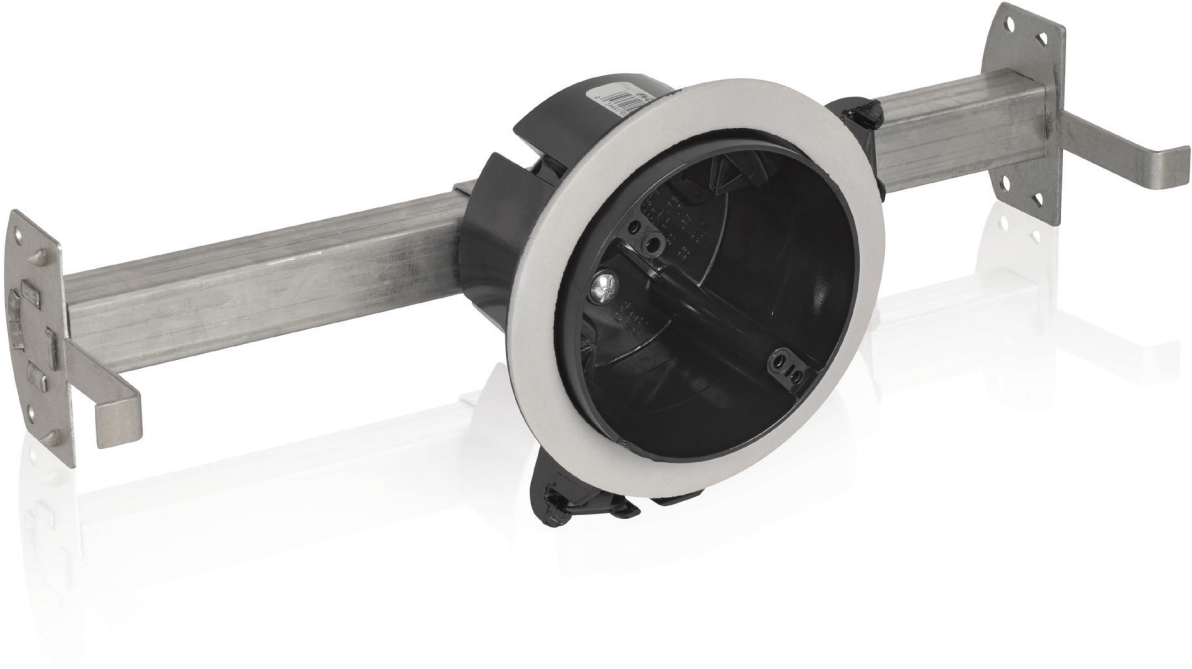


CARLON® DRAFTTIGHT®  
BOX AND HANGER BAR

**Carlon®**

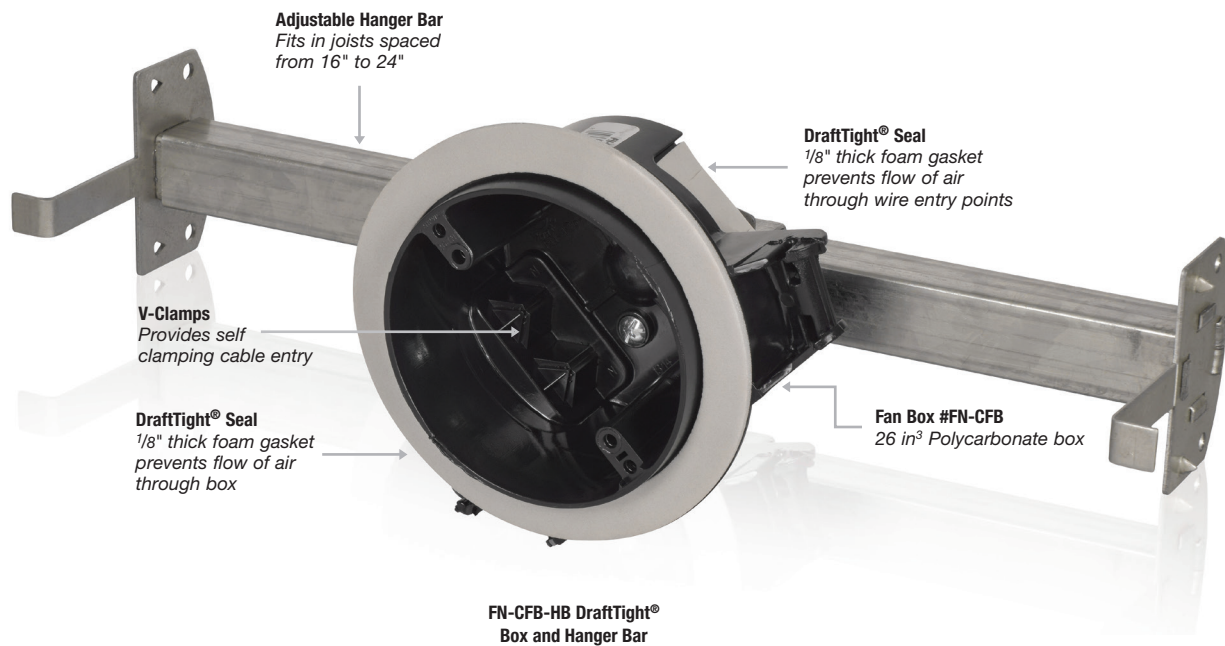


# Carlton® DraftTight® Box and Hanger Bar

The Carlton DraftTight® Box and Hanger Bar is a fan-rated, draft-tight ceiling box with an adjustable hanger bar. The vapor-barrier box is designed to meet the energy-efficiency requirements of modern homes. It features a drywall flange covered with a foam gasket and additional gaskets over the wire entry points. These gaskets provide a vapor-tight seal, preventing the free flow of air through the box. This helps control heating costs in the winter and cooling costs in the summer.

## Features and Benefits

- Utilizes a 26 in<sup>3</sup>, FN-CFB fan box
- High-strength polycarbonate construction will not shatter when cold or distort in heat
- Foam gaskets provide a vapor-tight seal at drywall and cable entry points
- ½" offset flange to ensure a flush fit in ½" drywall
- V-clamps provide self-clamping cable entry
- Hanger bar supports fan and fixtures between joists spaced 16" to 24"
- UL Fan Load Rating: 35 lbs. up to a 24" span
- UL Fixture Load Rating: 50 lbs. up to a 24" span
- Carries a UL 514C Listing



## Carlton® DraftTight® Box Hanger Bar



CAT. NO.	SIZE CU. IN.	MOUNTING MEANS	DESCRIPTION	DIMENSIONS (IN.)	STD. CTN.
FN-CFB-HB	26.0	Adjustable Hanger Bar	DraftTight® ceiling box fixture and hanger for joists from 16" to 24"	4L x 4W x 2¾ D	6

Please ask your Thomas & Betts sales representative for a complete catalog of quality Thomas & Betts electrical products or visit us at [www.tnb.com](http://www.tnb.com). For customer service, call 1-800-816-7809. For technical questions, call 1-888-862-3289.

**Thomas & Betts Corporation**  
Electrical Division  
8155 T&B Boulevard  
Memphis, TN 38125  
901-252-5000  
[www.tnb.com](http://www.tnb.com)

**Thomas & Betts**  
A Member of the ABB Group