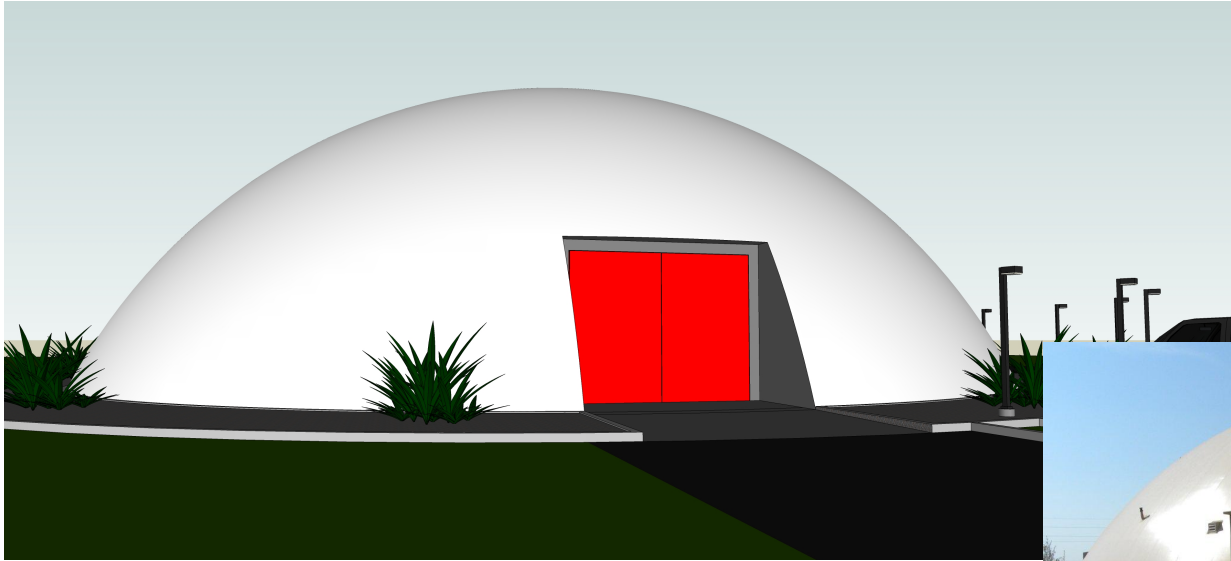




Energy & Maintenance

Design Architectural



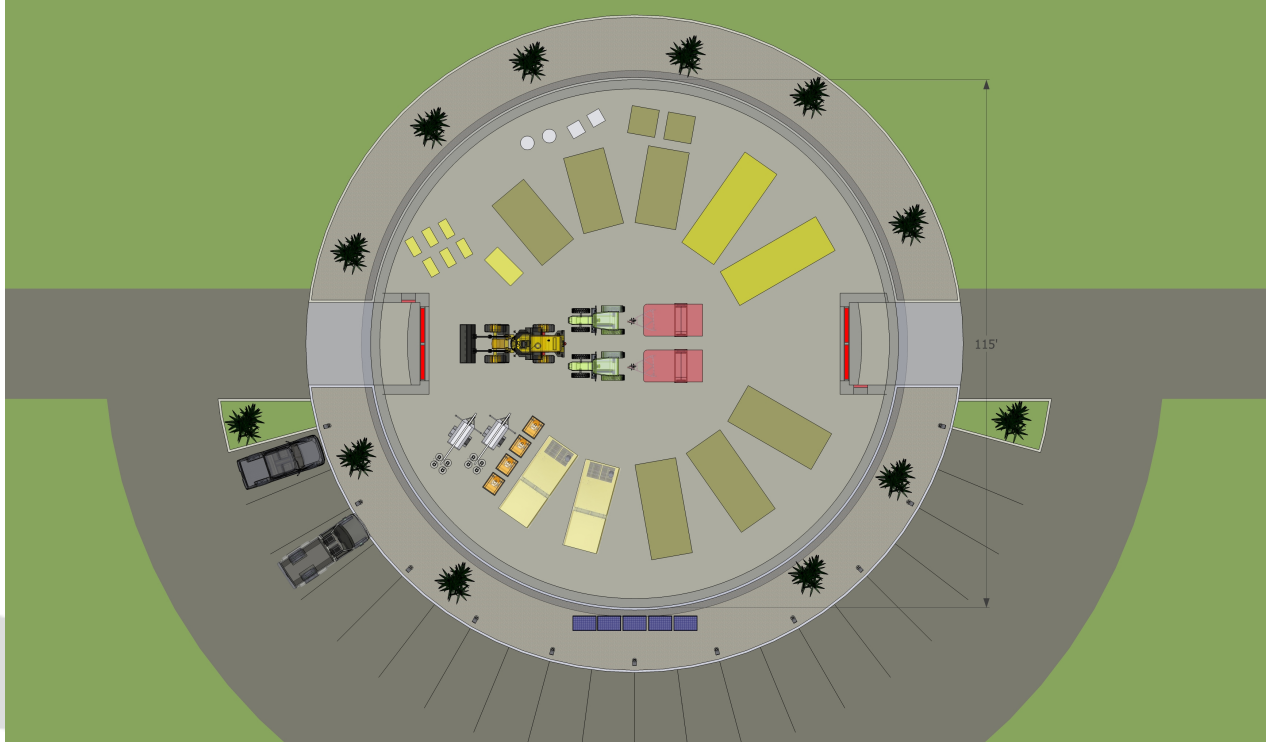
- Low Maintenance
- Durable Exterior
- Site Drainage



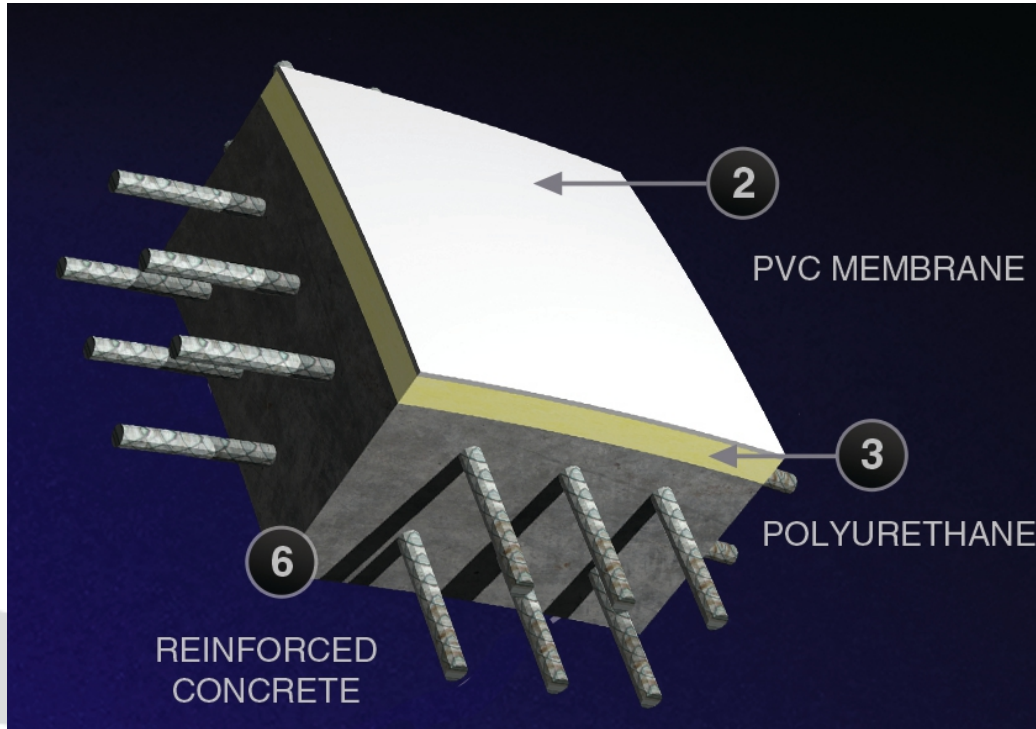


BE PREPARED. BE PROTECTED.

Design Architectural



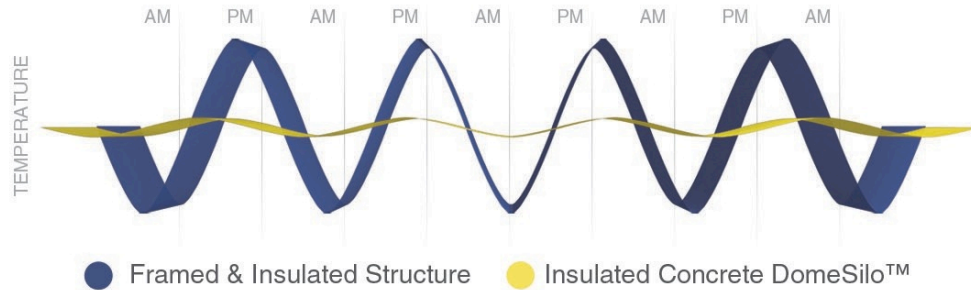
- Functional
- Easy access/ egress



Low Maintenance

- 100% water proofing
- 100% insulated
- Internal durable surface

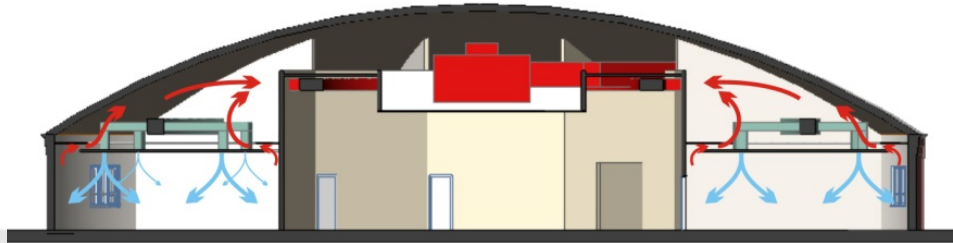
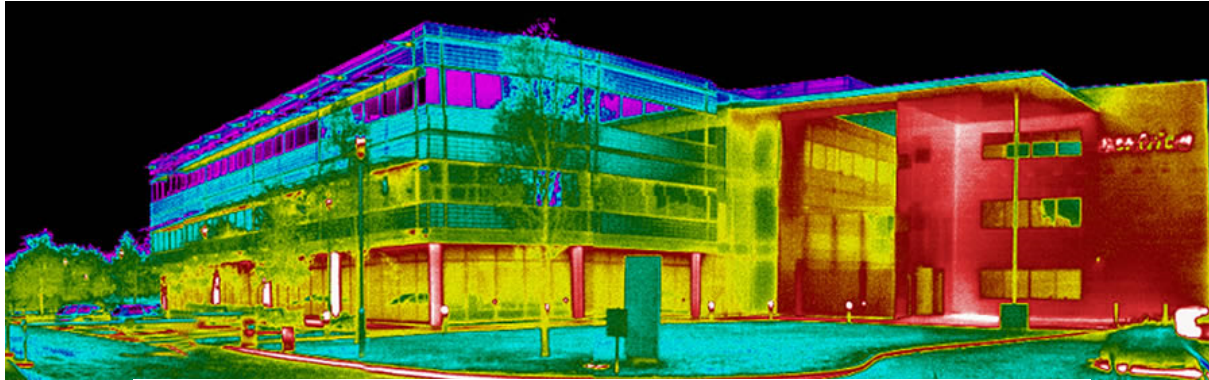
Interior Temperature Comparison

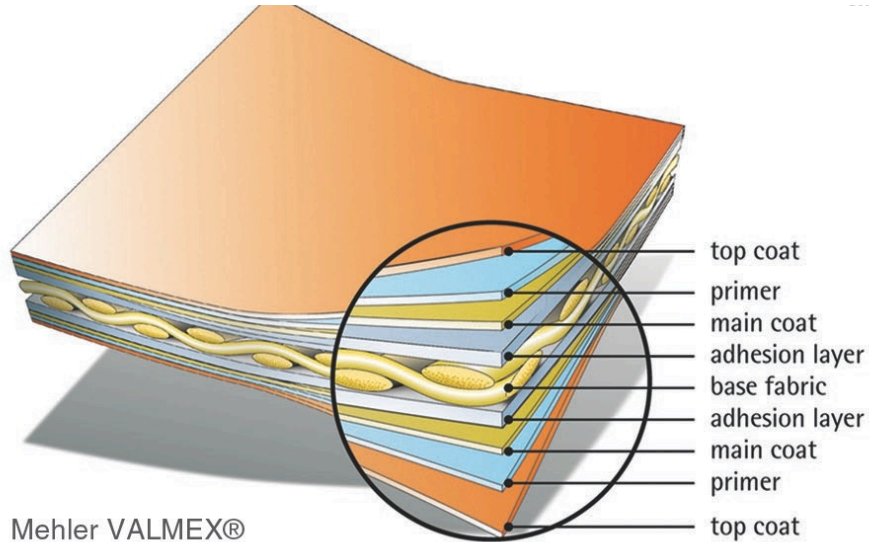


Thermal Mass

- Energy Savings
- Structure Longevity
- Temperature Control

Thermal efficiency due to thermal mass





Mehler VALMEX®
Waterproof Membrane

Low Maintenance

- Durable exterior surface
- Non combustible interior surface
- Mehler fabric self-cleaning properties



Insulated thin-shell dome attributes

- Savings in HVAC System
- Air tight construction
- Building shape limits direct solar exposure (solar stealth)
- Significant contribution to LEED Energy Points

