

X3 Lite Deluxe Lightweight Wheelchair



The **Aktiv, X3 Lite** is a deluxe, lightweight, durable aluminium wheelchair suitable for occasional to full-time use with a strong, crash tested frame including a five year warranty. Flip back, removable armrests with comfortable PU armpads are supplied as standard. The backrest, legrests and rear wheels all have quick release mechanisms for easy transportation and storage.

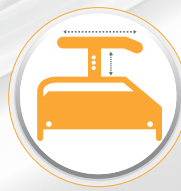
Height adjustable with a multi axle which allows for easy conversion between self-propel and transit wheels. The backrest and seat is covered with a padded nylon material for increased user comfort. Push button safety belt, stepper bar and anti-tippers are all supplied as standard. Footplates are height and angle adjustable as standard.



Max User Weight:
136kg / 21.4st



X3 Lite



Interchangeable Armrest options available



Available in 12" or 24" PU rear wheels

FEATURES

- Folding aluminium frame
- Multi axle for seat height adjustment
- Flip back, detachable armrest with PU armpad
- Plastic side panel clothes guard
- Padded, wipe clean, breathable, black nylon seat and back upholstery
- Height adjustable anti-tippers
- Aluminium brakes
- 7" grey PU front castors
- Available in 12" Transit or 24" Self-propel rear wheels with soft solid PU tyres
- Press button release safety belt

Optional:

- Elevating legrests
- Stump support
- Amputee settings
- Interchangeable Armrests – Short Desk, Loop or Height Adjustable armrests



Easy transportable.



Foldable frame



Side view



Flip Back Armrests



41 / 46 / 51cm



43cm



41 - 51cm



41cm



23cm



40 - 52cm



105 degrees



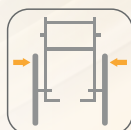
70 degrees



95 / 105cm



97cm



53 / 58 / 63 / 68cm



10.6kg



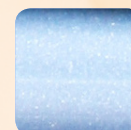
14.5kg



136kg



ISO 7176:19-2001 Passed



Frame Colour

WHEEL TYPE	SEAT SIZE	ORDER CODE
Self Propel	41cm (16")	X3SP4043
Self Propel	46cm (18")	X3SP4543
Self Propel	51cm (20")	X3SP5043
Transit	41cm (16")	X3T4043
Transit	46cm (18")	X3T4543
Transit	51cm (20")	X3T5043



The Apex
2 Sheriffs Orchard
Coventry
CV1 3PP

T: 0138 442 9700
F: 0872 115 4824
E: sales@aktiv-wheelchairs.co.uk

DEALER: