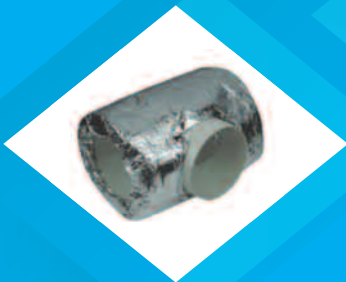
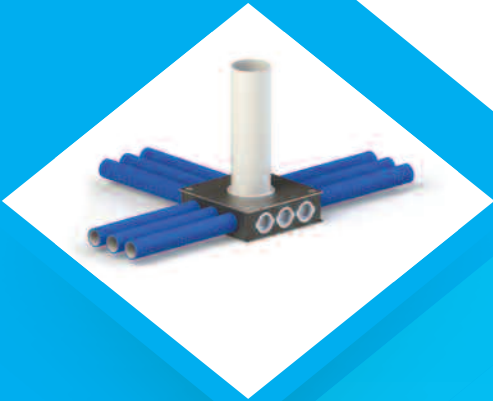




Independent Heat Recovery  
Ventilation Specialists



# Ducting Options

## DUCTING OPTIONS

As your ducting is an integral part of your build, it should be your primary consideration, it is well worth thinking about this not only in terms of its quality but also its life cycle. The more air we can distribute at any one time whether it is through a larger diameter rigid duct or a multiple port radial system, the quieter your system will be and the more efficiently your unit will run\*. ADM's independence means that we can offer a wide range of ducting to suit all applications and budgets.

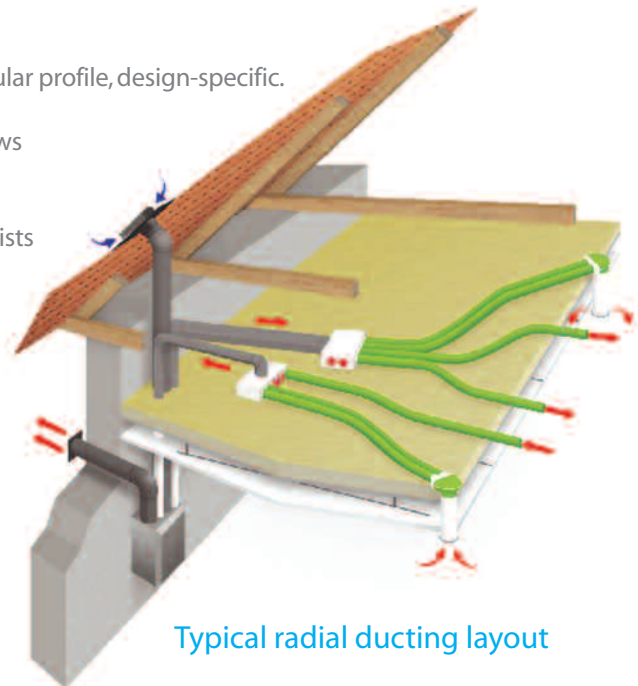


### uPVC Smooth Bore Rigid Branch Ducting

- Push fit connections
- Easy to cut with hand tools
- Smooth bore to improve air flows
- Available in 150mm and 125mm diameter, 180mm only available in spiral wound metal duct
- SAP Appendix Q compliant
- Also available in 204 x 60mm, 220mm x 90mm for limited void space

### Radial Semi-Rigid Ducting

- Available outside diameter of 75mm or 90mm circular profile, design-specific.
  - SAP Appendix Q and Passive House compliant
  - Smooth-bore anti-microbial lining improves air flows and reduces possible contaminants
  - Ideal for limited void spaces
  - Suitable for Metal Web Joists, engineered timber joists and retro-fit projects
  - Simpler to install than branch ducting
  - Manifold system reduces any chance of "cross talk" between rooms.
- Used in conjunction with a multiple port distribution manifold for central air distribution
- Rubber seal on joints ensures 100% air tightness



Typical radial ducting layout

Radial ducting and 12 port manifold



Ceiling plenum with radial



Radial 10 port manifold



Wall plenum



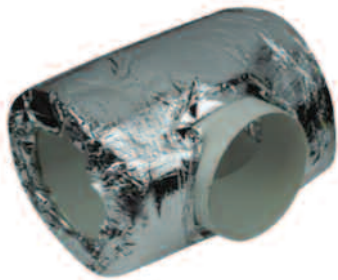
\*Please note; we strongly advise against conventional flexible ducting of ALL types because of its high air resistance (especially when kinked or restricted). Not only is it easily punctured or crushed but it will also lower the efficiency of any heat recovery unit. This is typically of the kind you might find attached to domestic tumble dryers.



## Safe Seal Connectors

- Parts provided as standard where applicable
- Galvanised steel construction fittings
- Used with either uPVC or galvanized steel ducting
- Double rubber seal = supreme air tightness
- Improves system performance compared to uPVC fittings
- Normally a requirement in Passive House properties
- SAP Appendix Q compliant
- For use with Branch or spiral metal ducting only
- Plastic safe seal parts also available

## DUCTING INSULATION



### 25mm pre Insulated ducting

This product is mandatory for NHBC Certificate compliance. The factory fitted thermal duct insulation prevents condensation within cold void areas and is available in 150mm and 125mm circular and 204 x 60mm diameter and has a thermal conductivity of 0.04W/mK. Supplied pre-applied to branch uPVC ducting only.

**PLEASE NOTE:** It is important to note that ALL ductwork within cold voids MUST be correctly insulated.



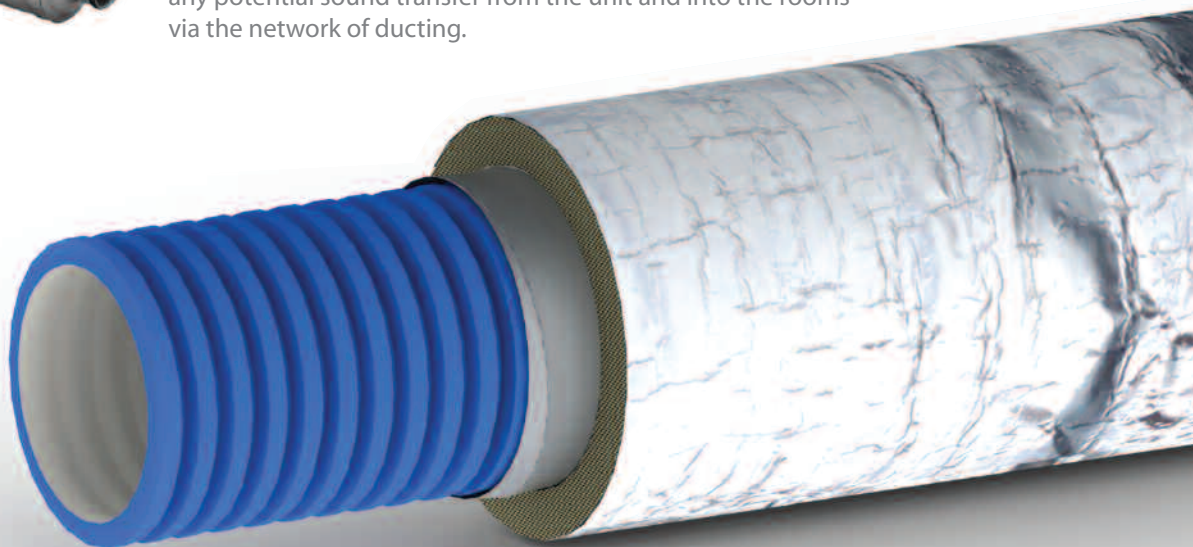
### Foil Faced Mineral Wool Wrap


- Used for external unit feeds
- Required for ducting passing within cold voids
- Improves thermal performance and reduces duct noise ingress/egress
- Available in 25mm or 50mm thickness
- Suitable for all ducts sizes and profiles available
- Required for use with heating or cooling option ductwork
- Prevents condensation formation in cold void areas
- Thermal conductivity of 0.032W/mK at 10°C
- For use with both Branch and Radial ducting systems
- Supplied in 13.5m rolls for cutting to size on site



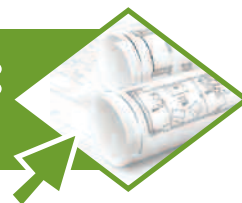
### Sound Attenuation

Locating the heat recovery ventilation unit away from sleeping areas and adding sound attenuation fittings to your system will reduce any potential sound transfer from the unit and into the rooms via the network of ducting.





**FORWARD YOUR PLANS TO:**  
[plans@admsystems.co.uk](mailto:plans@admsystems.co.uk)



 **adm systems**

Independent Heat Recovery  
Ventilation Specialists

ADM Systems | Fairfax House | 7 Wool Gate | Cottingley Business Park | Bingley | BD16 1PE  
t: 01756 701051 | e: [enquiries@admsystems.co.uk](mailto:enquiries@admsystems.co.uk) | w: [www.admsystems.co.uk](http://www.admsystems.co.uk)

Air Distribution Management Limited | Registered in England and Wales | Company Registration No. 3745814 | VAT No. GB 721 7788 15