



CUSTOM MADE
STAIRCASES



CREATE A STUNNING VISUAL IMPACT

Given its location within a building, a staircase has the power to create a stunning visual impression for anyone entering the property.

A stunning and stylish staircase offers you the perfect opportunity to impress, whilst reflecting the style and character of the rest of the interior. Only recently have home owners and developers started to realise the impact a stair can have in a property and are now favouring a more modern approach to create the right first impression. Our staircases are light and open in appearance and are supplied for new builds and refurbishments across the UK.

CONTENTS

PAGES 04-11

MODEL 500 STAIRCASE

PAGES 11-19

WF STAIRCASE

PAGES 21-27

MODEL 71 SPIRAL

PAGES 28-33

MODEL 76 SPIRAL

PAGES 34-41

CUSTOM MADE SPIRAL

PAGES 42-43

GENIUS SPIRAL

PAGES 44-47

EXTERNAL SPIRAL STAIR

PAGES 48-49

GENERAL INFORMATION

**THE MODEL 500 STAIRCASE
COMBINES STEEL STRINGERS,
TIMBER TREADS AND GLASS
BALUSTRADE FOR A MODERN
APPEARANCE.**

It is a custom made model so the stair will be individually designed for the property. The model can be supplied as a straight flight, quarter turn or half turn flight with the width and tread depth specific to each staircase.

**MODEL 500
STAIRCASE**

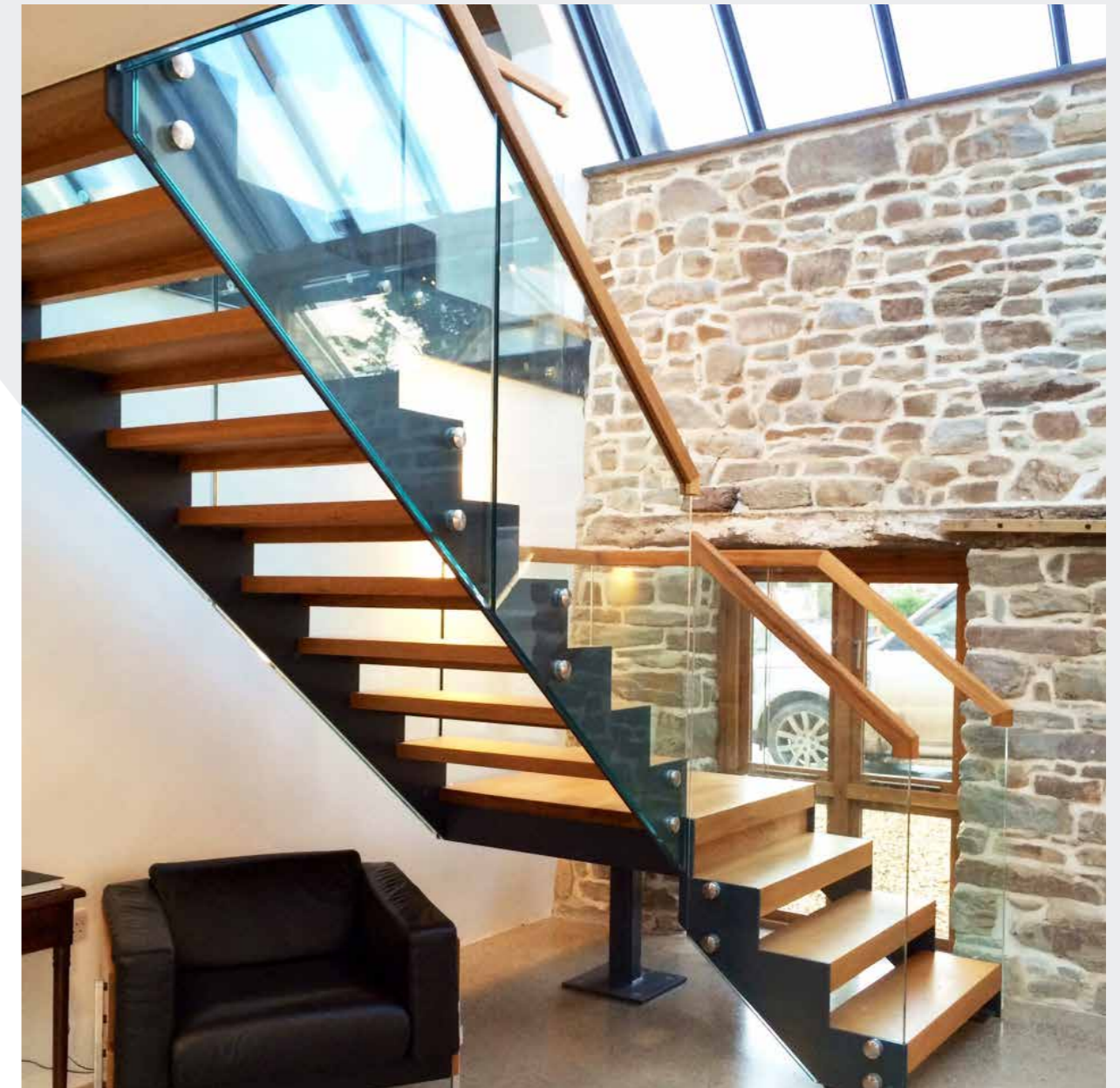
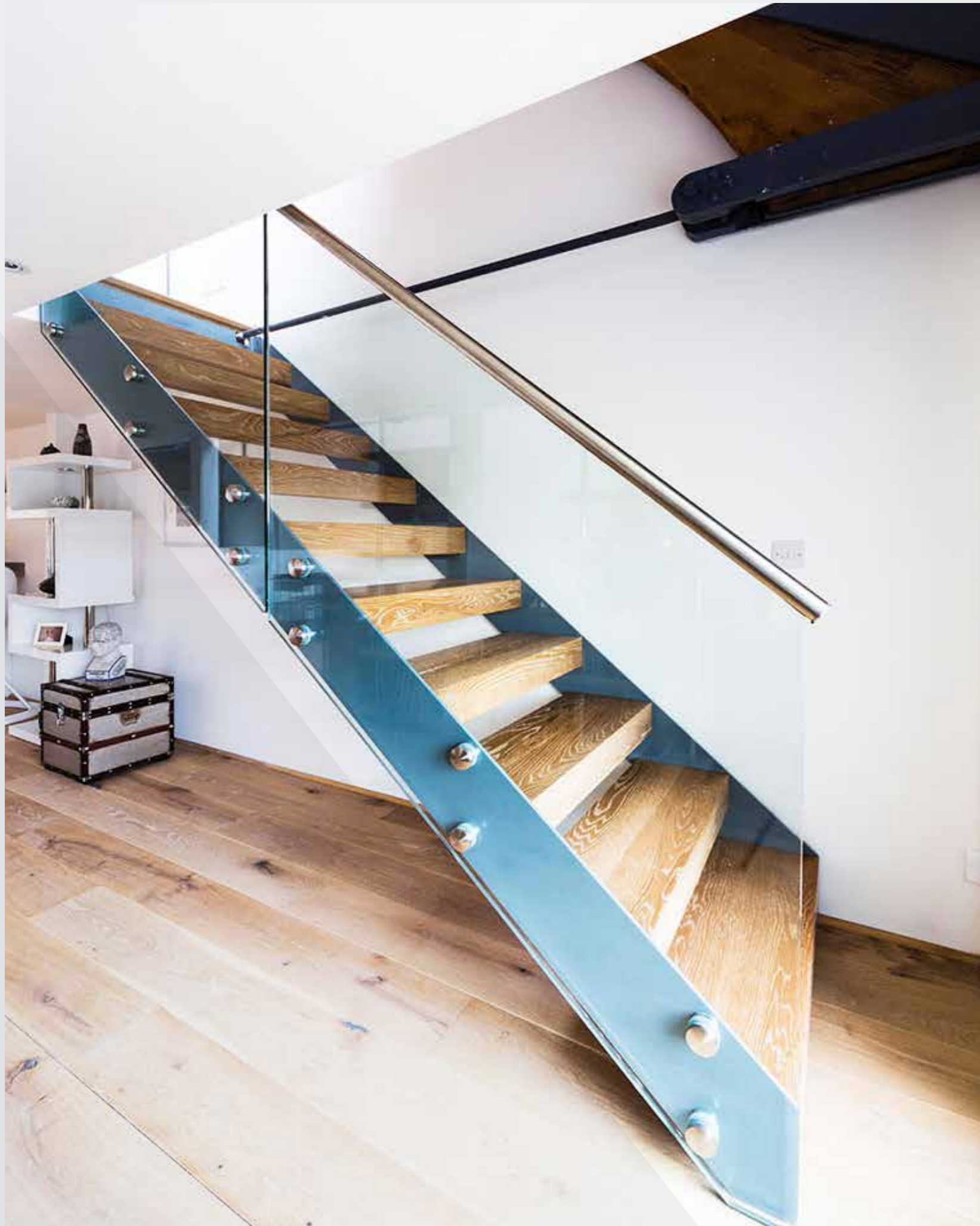


Mr & Mrs Prince, Romsey

**" I WOULD HAVE NO DIFFICULTY
RECOMMENDING YOUR COMPANY "**

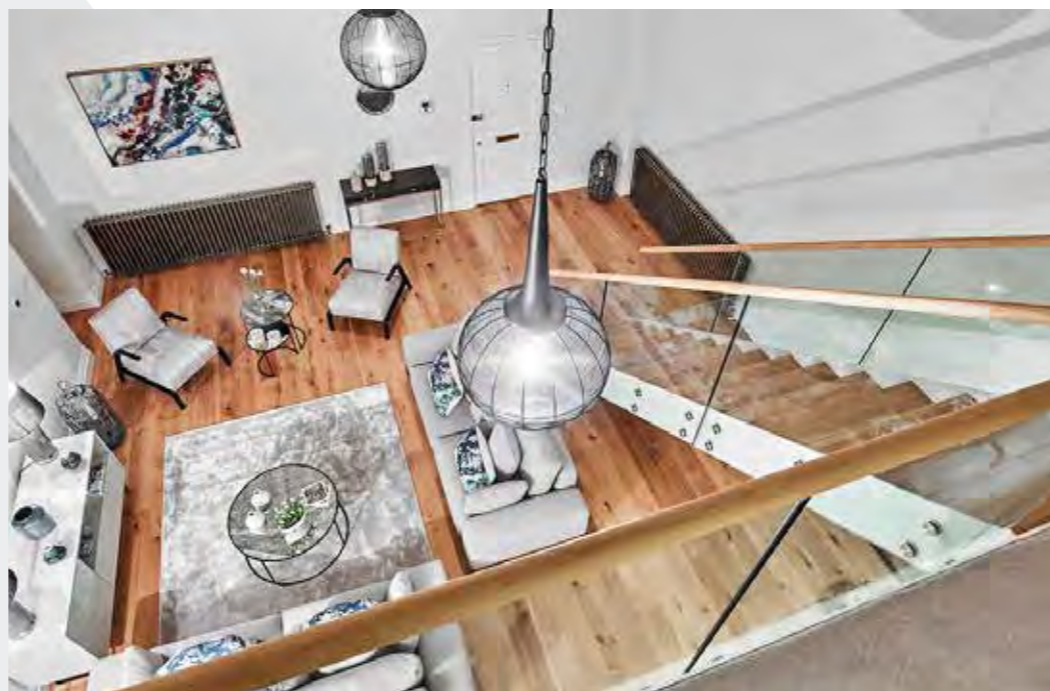
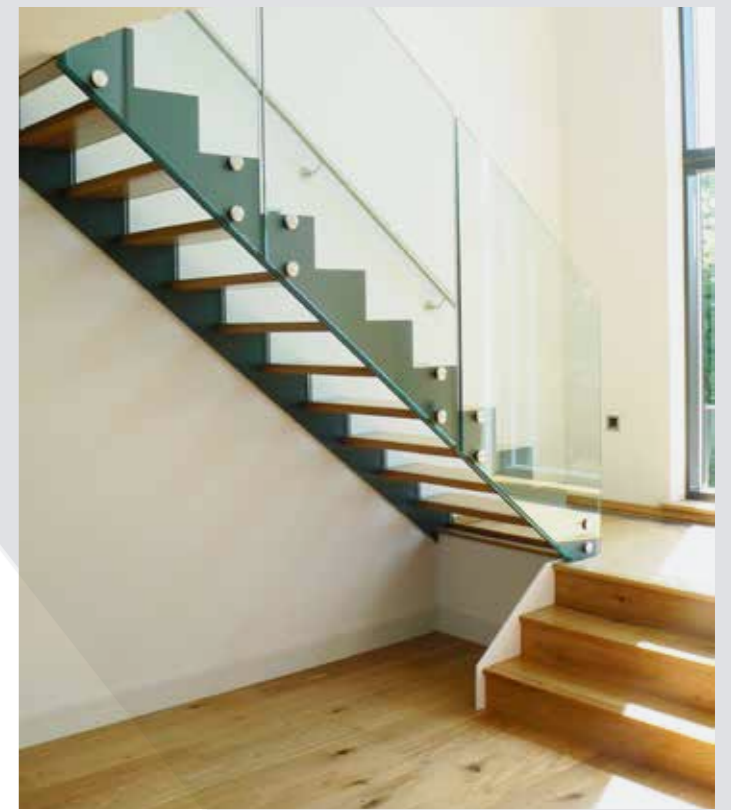


**MODEL 500
STAIRCASE**











**MODEL 500
STAIRCASE**

**T H E W F S T A I R C A S E I S A
C A N T I L E V E R E D S T Y L E ,
F L O A T I N G T I M B E R
S T A I R C A S E .**

Uniquely, it only has one stringer running on the wall side of the stair leaving the open side suspended in mid air creating a stunning open effect. This is achieved by a handrail with a special steel core into which the steel spindles screw. The spindles then bolt the tread in place with the load transferred through the spindles and handrail to the newel posts top and bottom. It is the most open and light staircase we supply and it is very economically priced.

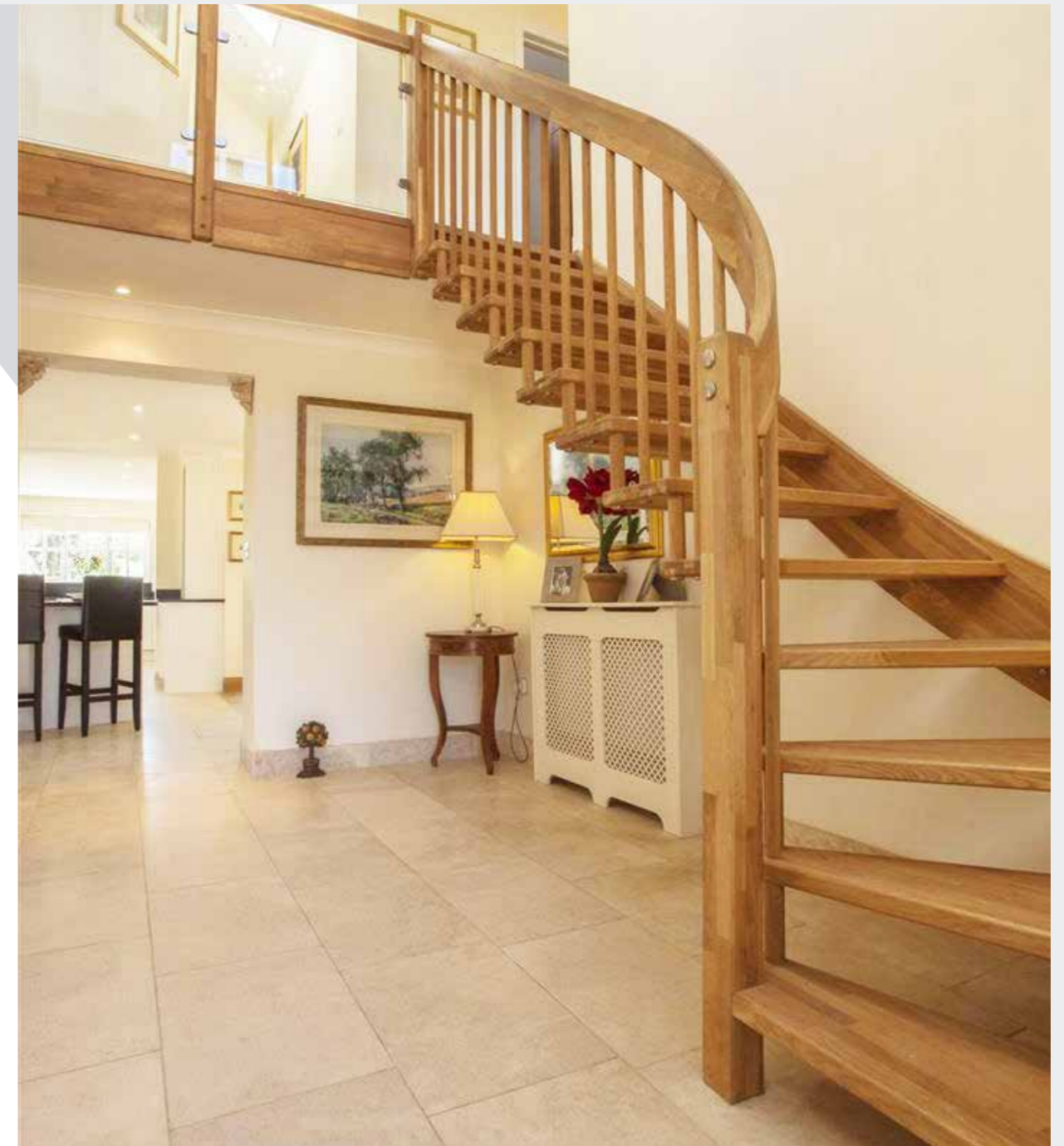
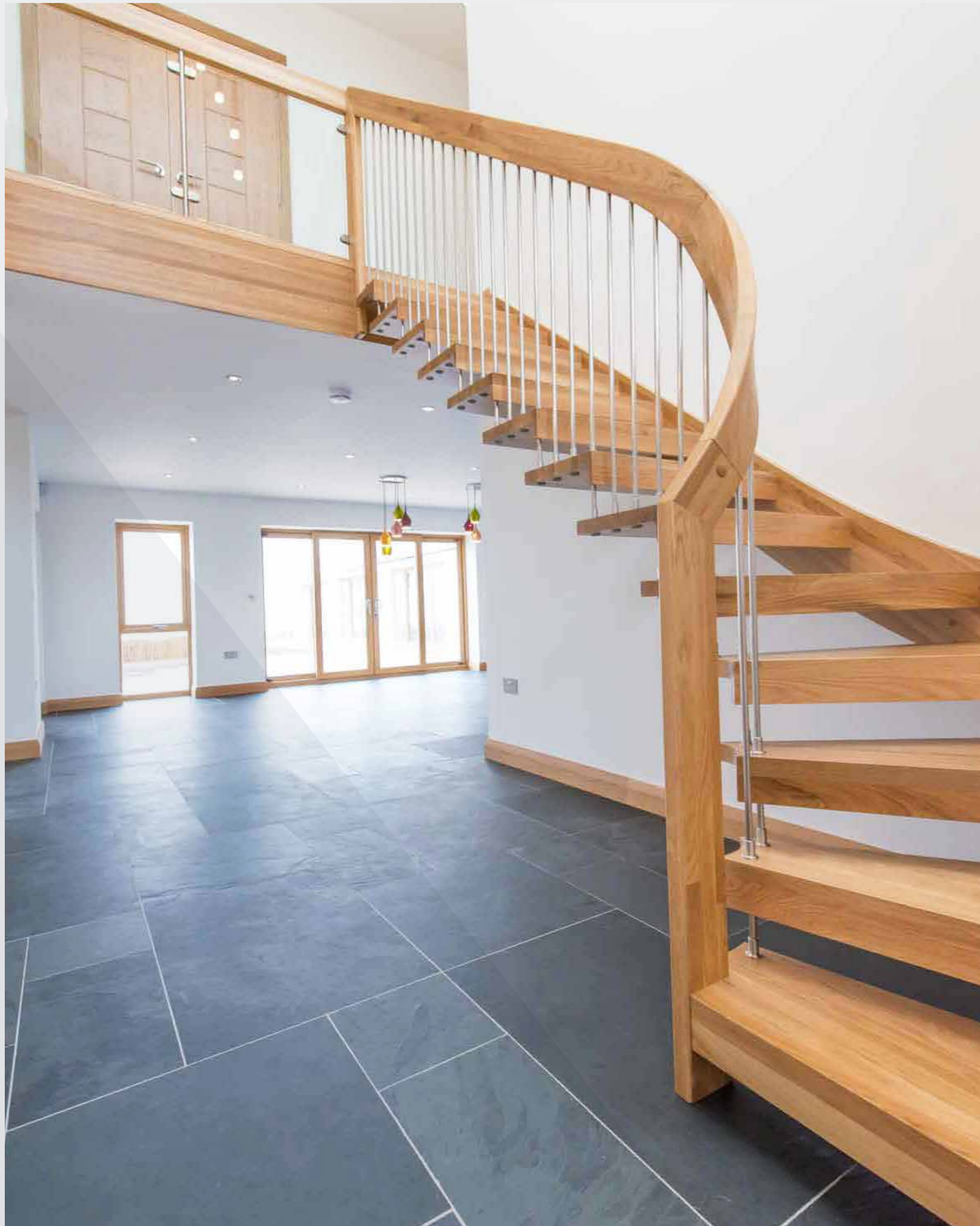
**W F
S T A I R C A S E**



"A GREAT COMPANY TO WORK WITH. REALLY ENGAGING DURING THE DESIGN PROCESS AND THE DELIVERY WAS PROMPT AND ON TIME"
Mrs Chestnutt, West Wellow



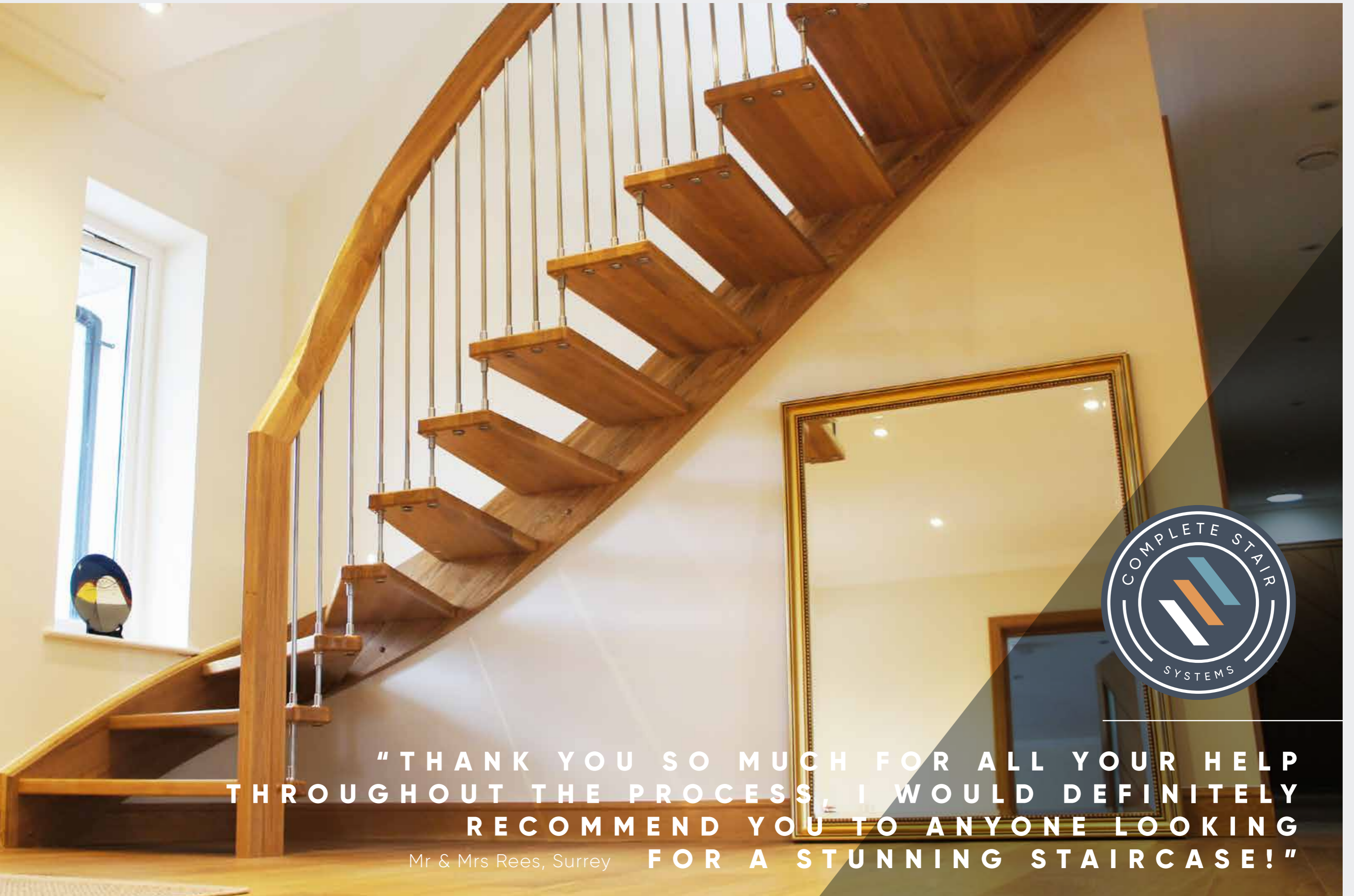
W F
S T A I R C A S E





W F
S T A I R C A S E





**"THANK YOU SO MUCH FOR ALL YOUR HELP
THROUGHOUT THE PROCESS, I WOULD DEFINITELY
RECOMMEND YOU TO ANYONE LOOKING
FOR A STUNNING STAIRCASE!"**

Mr & Mrs Rees, Surrey



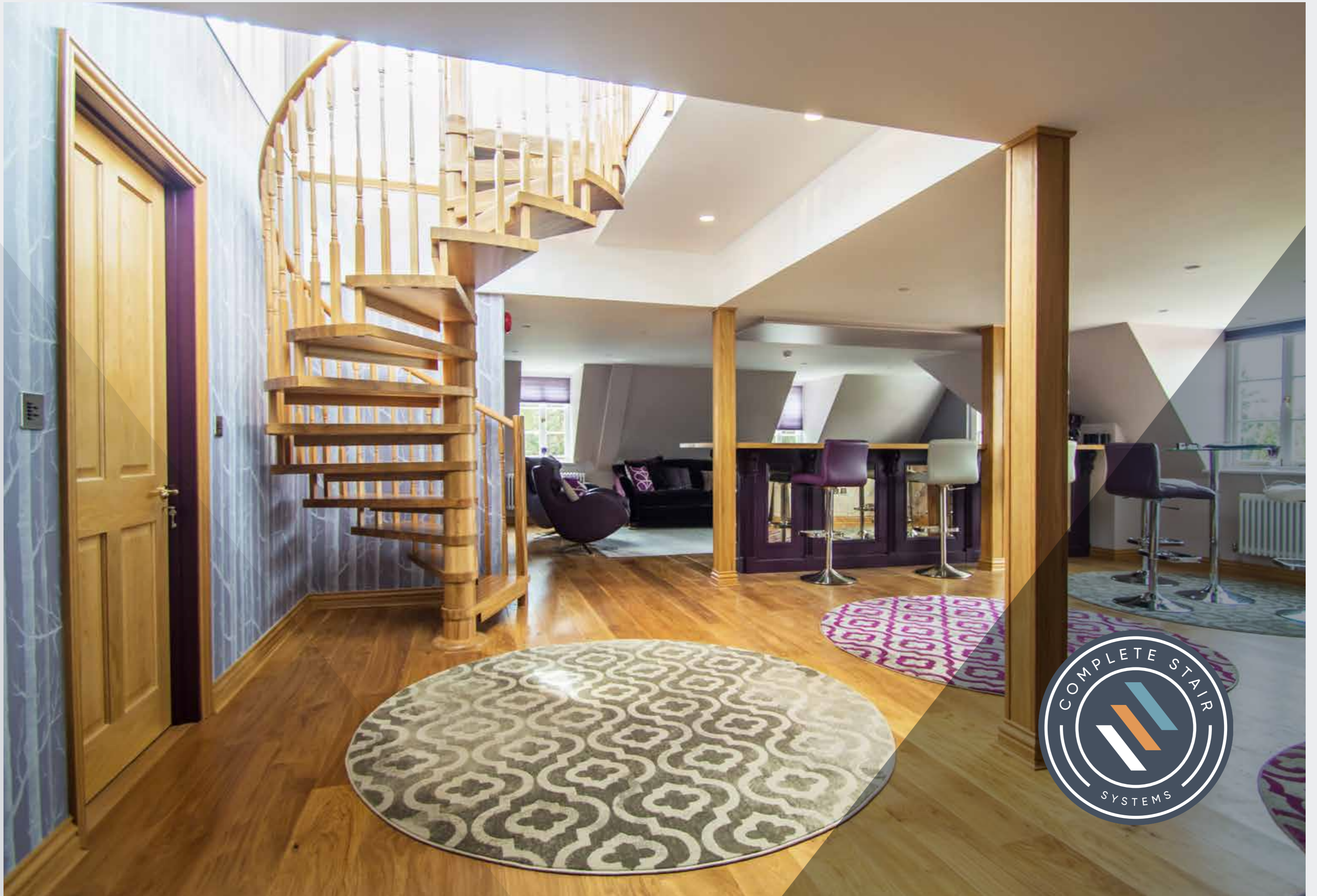


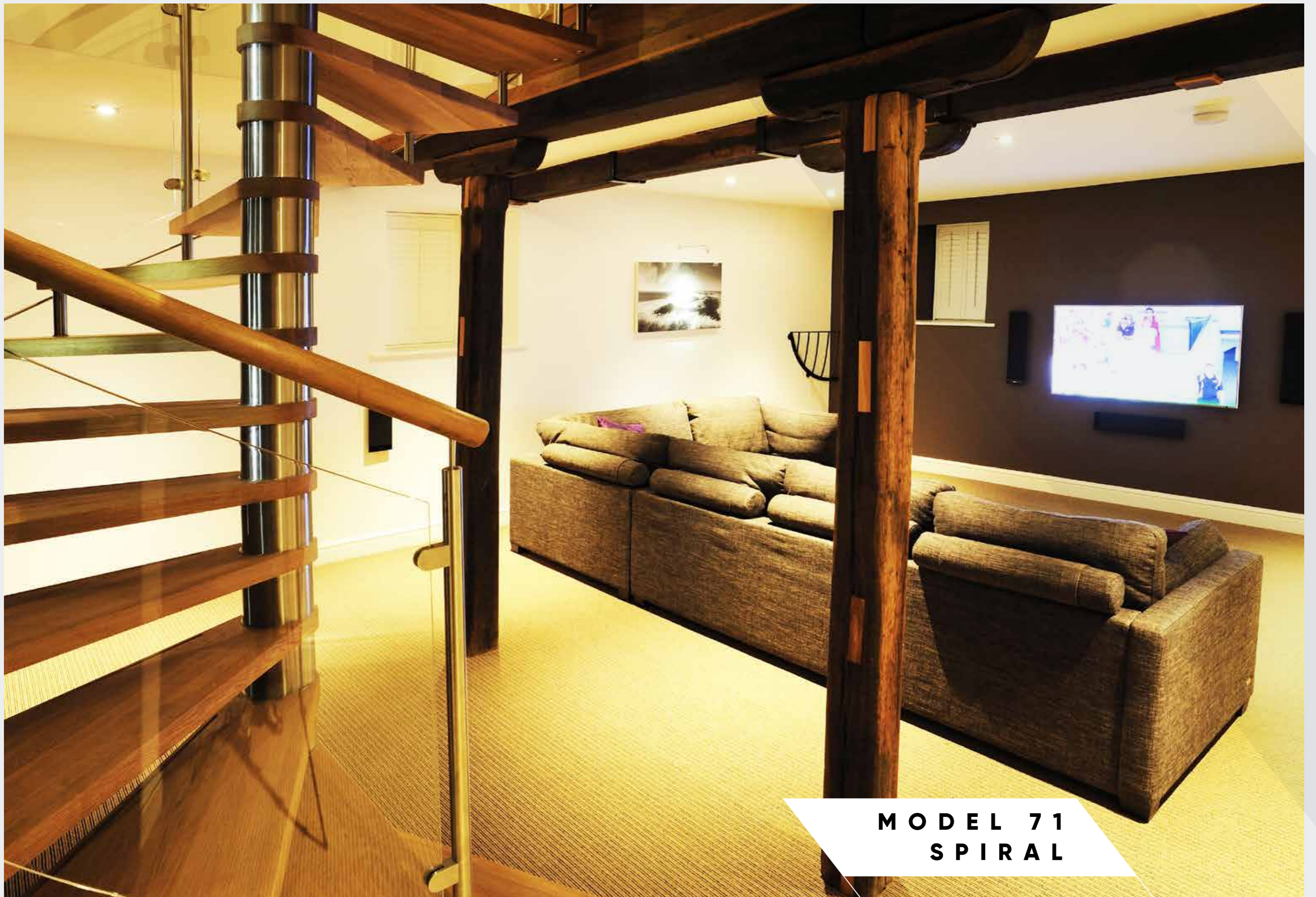
W F
STAIRCASE

**THE MODEL 71 SPIRAL
STAIRCASE IS A BESPOKE
SPIRAL STAIR, CONSTRUCTED
WITH A STEEL CENTRE
COLUMN AND TIMBER
TREADS.**

It is available in diameters from 1000-2000mm and can span multi levels if required. For strength, the timber treads are always hardwood, with beech, oak, maple, ash and walnut the most popular choices. It is a domestic spiral stair suitable for use as a primary or secondary staircase. Its modern, light and open appearance makes the Model 71 Spiral a real feature within a dwelling.

**MODEL 71
SPIRAL**





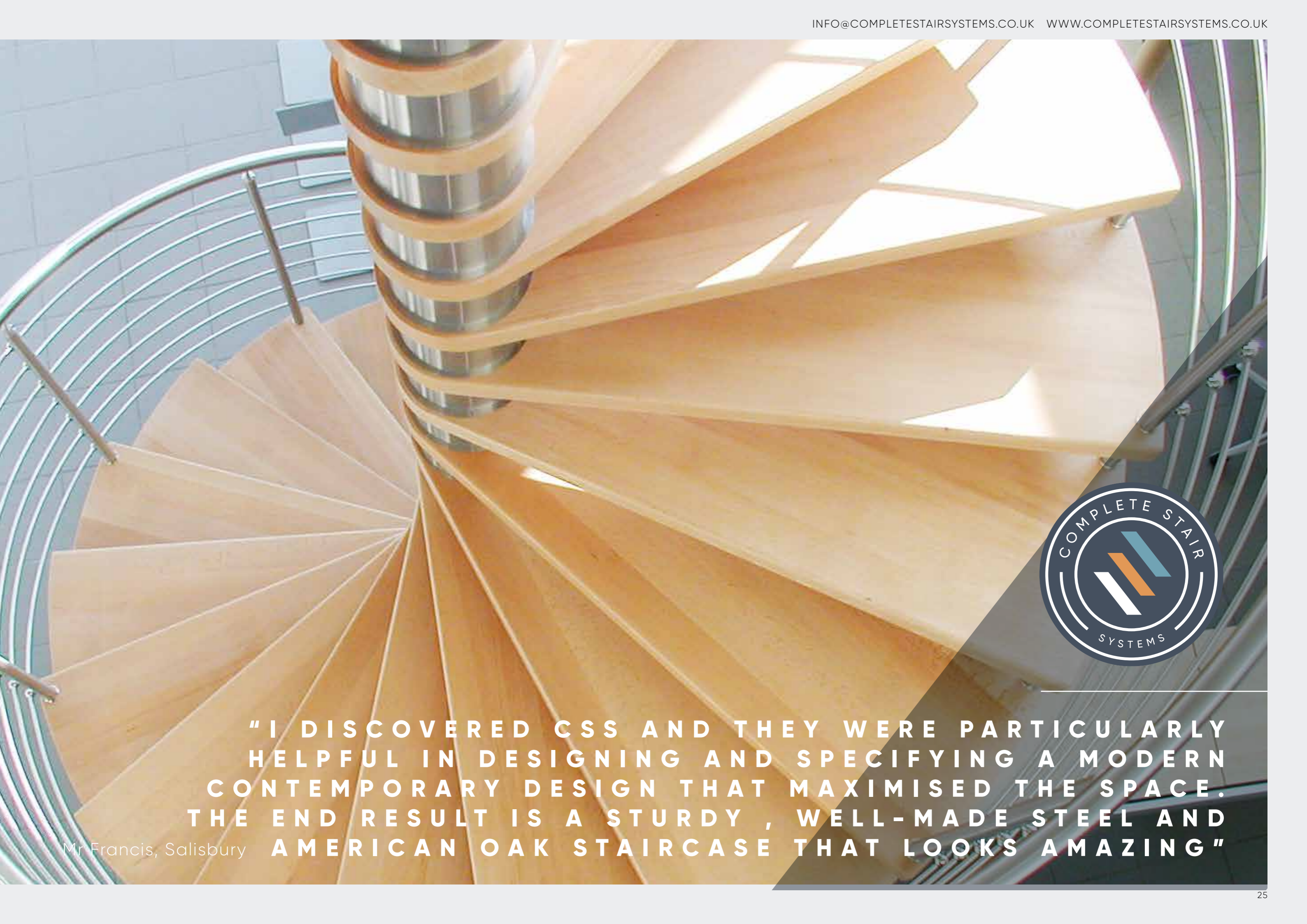
**MODEL 71
SPIRAL**





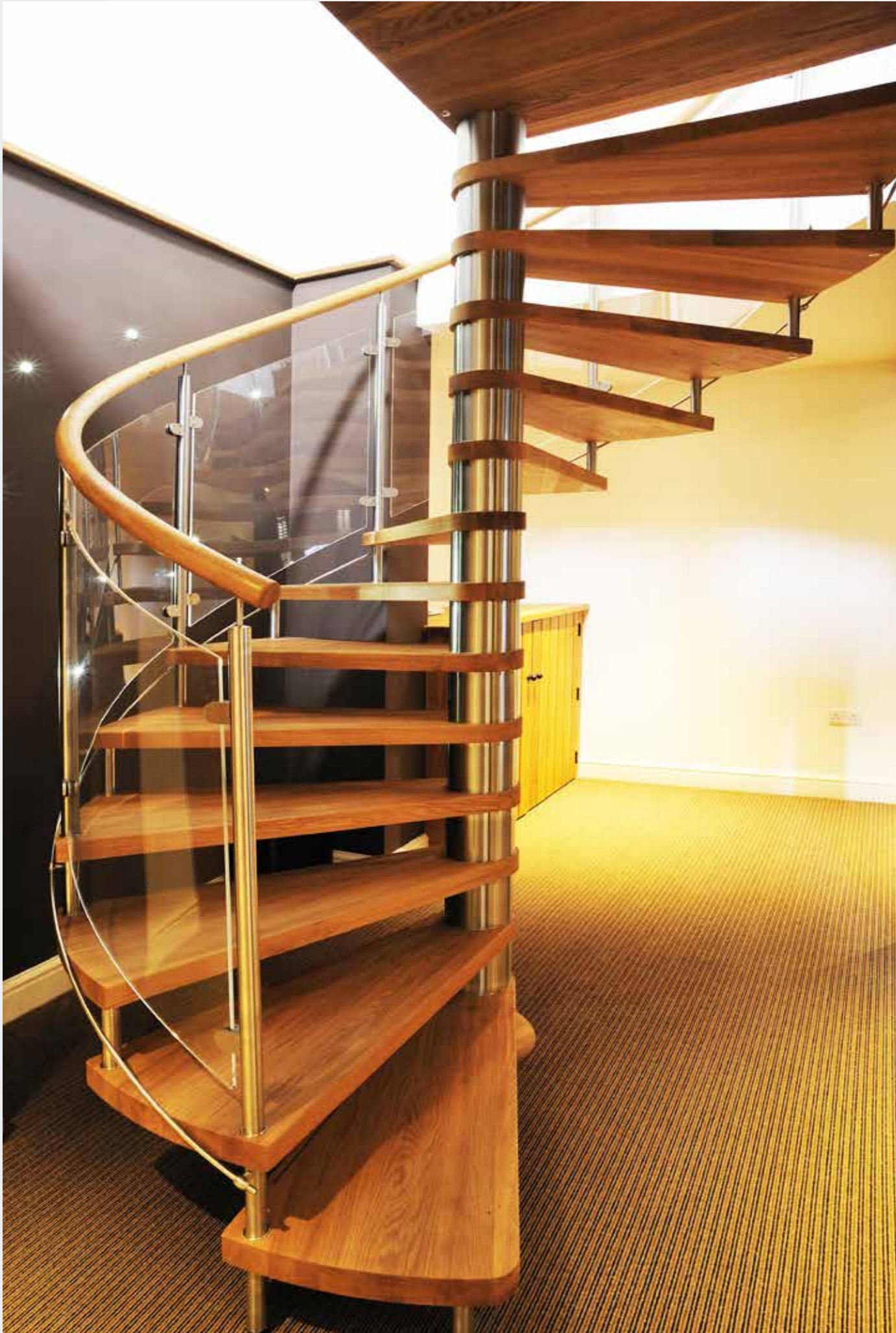
**MODEL 71
SPIRAL**





" I DISCOVERED CSS AND THEY WERE PARTICULARLY HELPFUL IN DESIGNING AND SPECIFYING A MODERN CONTEMPORARY DESIGN THAT MAXIMISED THE SPACE. THE END RESULT IS A STURDY , WELL-MADE STEEL AND AMERICAN OAK STAIRCASE THAT LOOKS AMAZING "

Mr Francis, Salisbury





MODEL 71
SPIRAL

**OUR MODEL 76 SPIRAL
STAIRCASE IS THE ULTIMATE
TRANSPARENT STAIRCASE.**

It consists of laminated glass or acrylic treads with a polished or brushed stainless steel centre column. It is a bespoke product so each spiral is carefully plotted to ensure the entry and exit points are correct and that there is sufficient headroom.

**MODEL 76
SPIRAL**





**MODEL 76
SPIRAL**







Mr Reid, Manchester **" ALL IN AND LOOKS FANTASTIC - THANKS FOR ALL YOUR ATTENTION TO DETAIL "**

**OUR CUSTOM MADE SPIRAL
STAIRCASES OFFER
THE MOST VARIETY OF
MATERIALS.**

They are all based on a single steel centre column with steel tread arm supports and are then personalised depending on the application and client's preferences. They are widely supplied to the commercial market for use in offices, schools and restaurants and can serve as primary or secondary access within a home.

**C U S T O M
S P I R A L**

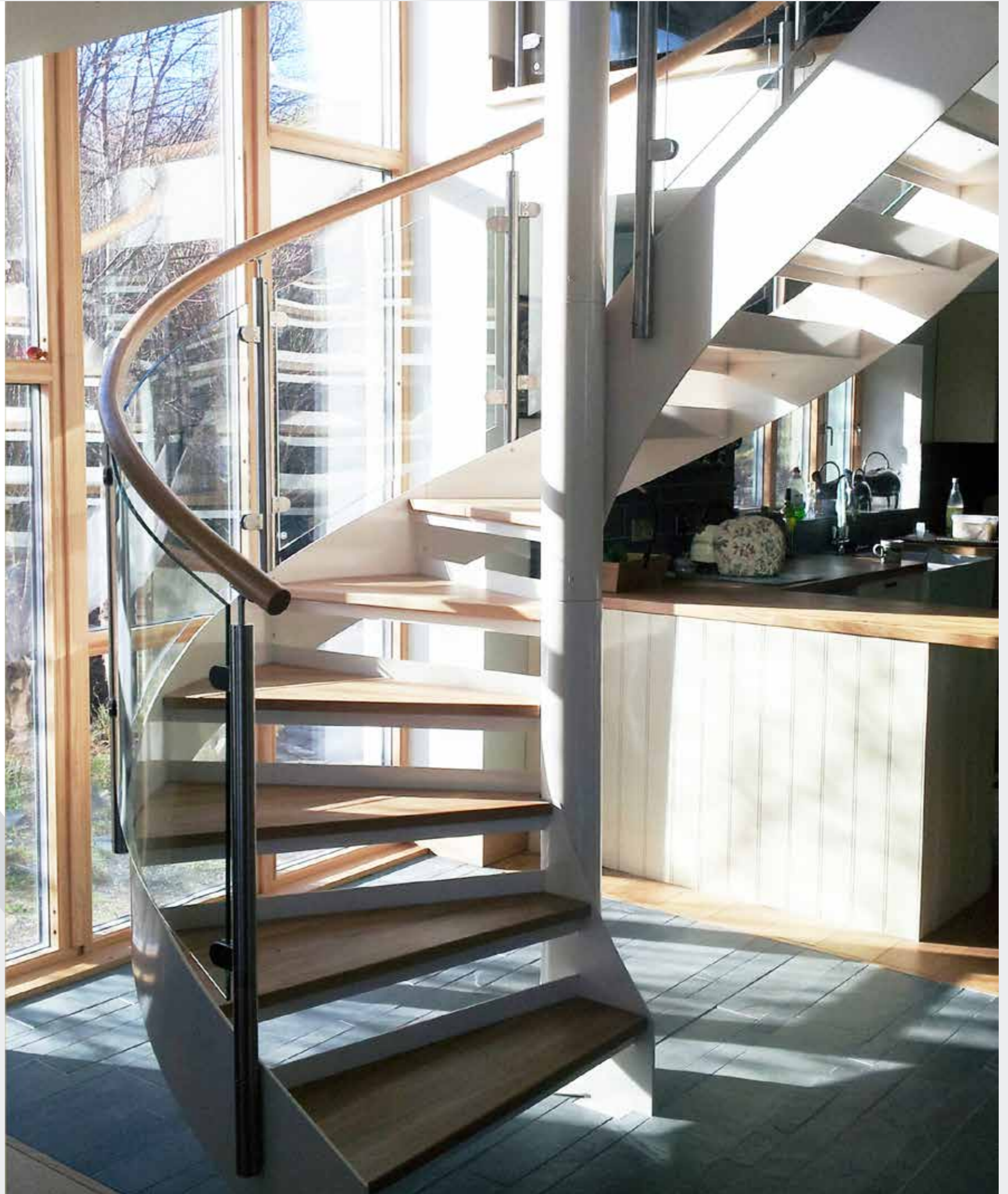
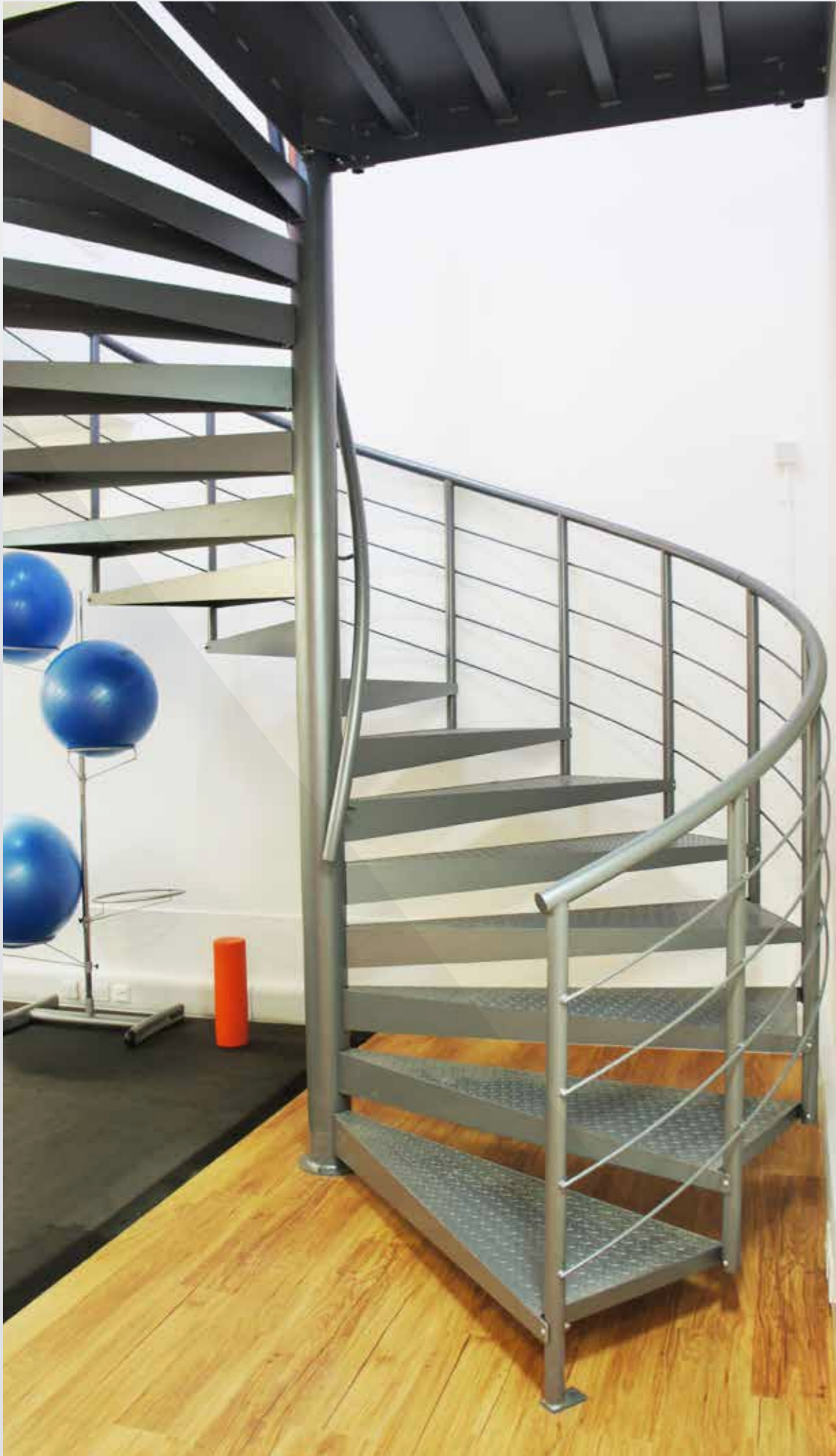


"THIS IS A REPUTABLE AND EXTREMELY HELPFUL COMPANY. DO NOT HESITATE TO DEAL WITH THEM AND PURCHASE A QUALITY STAIRCASE WHICH WILL BE IN SITU ON EARTH LONGER THANK YOU WILL."

Mrs Savile, France

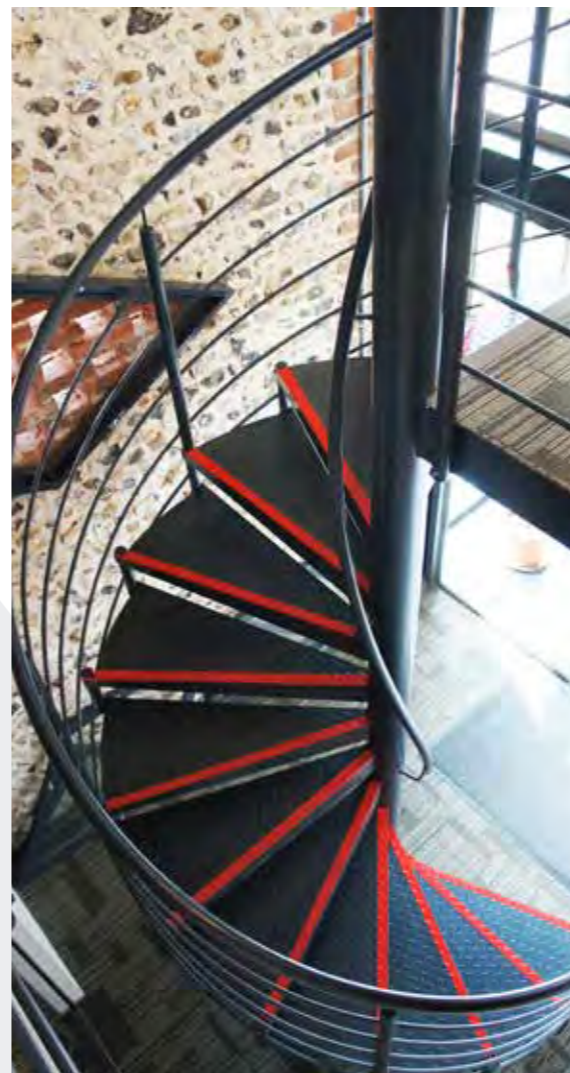


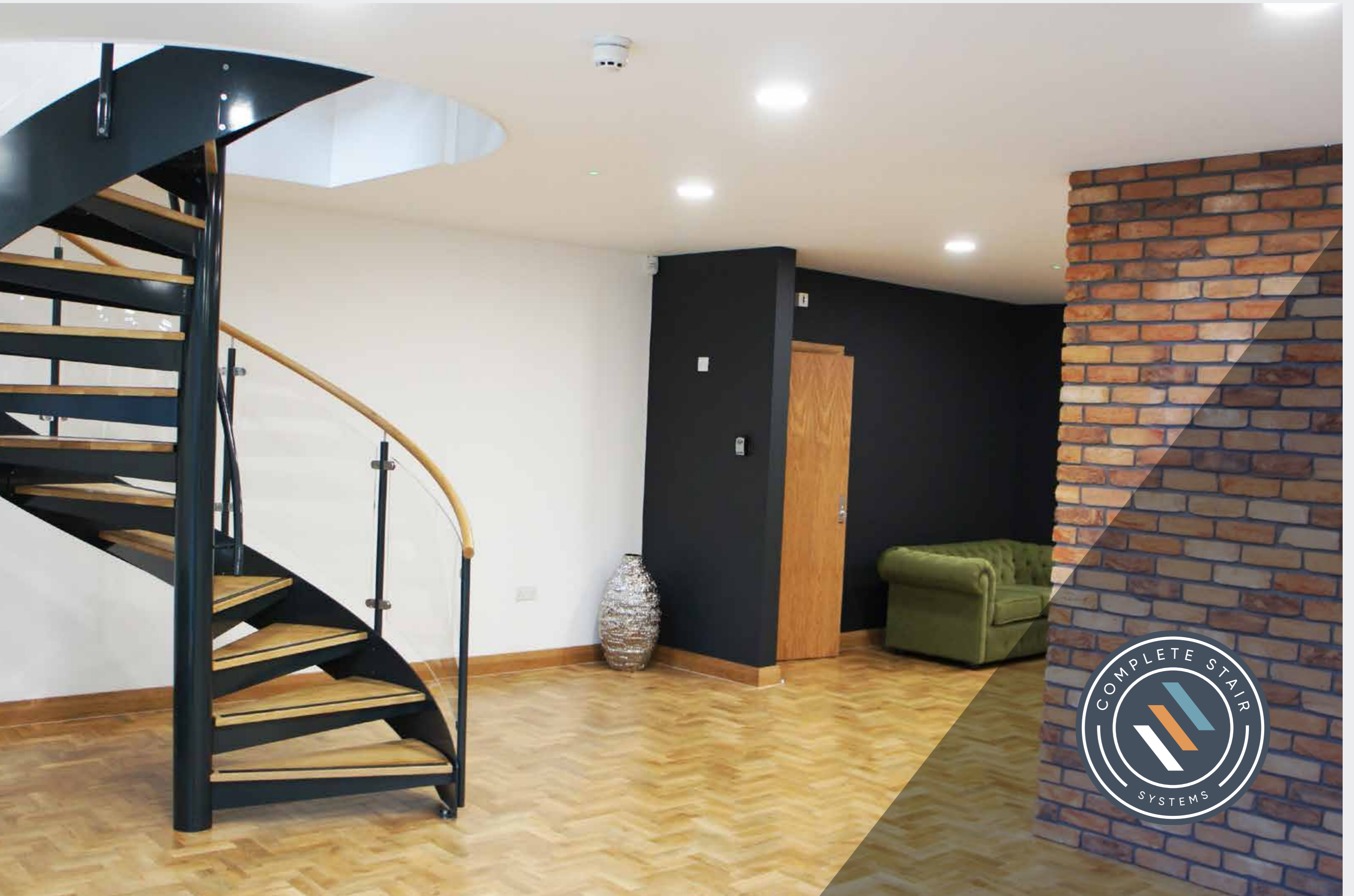
**CUSTOM
SPIRAL**





**C U S T O M
S P I R A L**









**C U S T O M
S P I R A L**

**THE GENIUS SPIRAL
STAIRCASE IS A VERY
VERSATILE KIT STAIRCASE
WHICH IS ECONOMICALLY
PRICED AND HAS A QUICK
DELIVERY PERIOD.**

Supplied as a secondary domestic staircase it has beech, ash or oak treads and handrail and a variety of balustrade infill to choose from. The steelwork is powder coated Pearl Grey, Iron Grey, Coppery Black, white or can be supplied in a chrome effect.



GENIUS



**OUR EXTERNAL SPIRAL
STAIRCASES ARE SUPPLIED
TO BOTH COMMERCIAL AND
DOMESTIC CLIENTS.**

They make the perfect solution for accessing a balcony or serving as a fire escape in a tight location. Each model is made-to-measure so that the entry and exit points are unique to each project. The spirals can accommodate large platforms if necessary that can be used as a balcony. The treads are steel, either in a non slip perforated plate, chequer plate steel or steel grating and the balustrade is formed with vertical steel spindles or horizontal rails. These spirals are usually supplied galvanised but can be powder coated to any colour.

**EXTERNAL
SPIRAL**





**EXTERNAL
SPIRAL**



CHOOSING & PURCHASING YOUR NEW STAIRCASE

HOW TO GET A QUOTATION

Once you have looked through our staircase brochure, be sure to have a look at our website www.completestairssystems.co.uk where you will see detailed case studies and many more examples of the products displayed in this brochure.

To work out a price we will need to know the model of interest, an idea of materials you would like, a floor to floor height and the shape of the flight (straight flight / quarter turn /spiral/ half turn). If you have any drawings, please email to info@completestairssystems.co.uk.

SPIRAL STAIRS FAQ

Spiral Staircases can sometimes be a little tricky to understand so we have prepared this list of commonly asked questions to help.

WHAT DIAMETER SPIRAL DO I NEED?

Usually the diameter required is drawn and specified by the architect and it alters depending on its usage. Logically, the general rule and regulations dictate that the more a spiral will be used, the larger it should be. Typically, a secondary spiral within a home will have a minimum diameter of 1500mm allowing for a 600mm clear walking tread width and a spiral acting as the primary stair within

a dwelling would need to be around 1900mm diameter to obtain an 800mm clear tread width.

Commercial spiral staircases vary depending who will be using the spiral and the number of people it is serving. A small semi public staircase serving up to 50 people will typically have a 2000mm diameter and a spiral serving more than 50 people 2300mm or larger.

WHAT FLOOR OPENING DO I NEED?

The opening in the floor should be 100mm larger (in both directions) than the diameter of the spiral staircase required.

This would mean a 1600mm square or circular opening in the floor would be required for a 1500mm diameter spiral staircase. This extra space will allow for a 'knuckle' gap either side of the spiral between the handrail and any wall and handrail and the edge of the floor.

Our spiral staircases all have a centre column located in the middle of the opening – not the side of the opening. It is a common misconception that a spiral will rotate around 180 degrees with the top step butting up against the edge of the floor upstairs. Spirals generally have a triangular or square platform at floor level which spans from the edge of the floor to the centre column so the opening required is often larger than people think.

WHERE DOES IT START & FINISH?

The entry and exit point on a spiral varies depending on the number of risers, the diameter of the spiral and the shape of the top platform. Whether it ascends clockwise or anticlockwise will also have an impact.

It is often crucial to get this element correct as there will most likely be walls or doorways that have to be avoided as well as considering the 'flow' of traffic within the property. The entry and exit points are best defined on a plan drawing which will be prepared on receipt of an order, as is the case for all our bespoke spirals.

ANYTHING ELSE TO CONSIDER?

To comply with UK building regulations domestic spirals cannot have a gap of more than 100mm. To reduce the gap between the risers (the gap between each step) we have various infill options, many of which do not detract from the open feel of the flight. Due to the number of options, these infill pieces are usually priced as additional costs. Horizontal rails are normally not permitted as they are deemed climbable.

You might also require some matching landing balustrade around the opening on the upper level to prevent people falling into the void.

DELIVERY

All staircases are supplied in component form for assembly on site.

The Genius Spirals take between 3 & 4 weeks for delivery depending on the model and number of accessories ordered. The stair is supplied in a palletised box and will be delivered by a carrier equipped with a pump truck for offloading. The transport company will contact you the day before to advise on an AM or PM delivery.

All our custom-made staircases take between 8-10 weeks to manufacture. These vary in how they are delivered, depending on the size and weight of the model.

The majority of the staircases are supplied on a pallet but some larger stairs have to be delivered by a truck equipped with a hoist crane.

Please be aware that production does not commence until drawings have been approved and any manufacture lead-in times quoted do not start until approval.

For further help and information please have a look at our terms and conditions or call the office.

BUILDING REGULATIONS

If you require a staircase for a new build or installing a stair into a new loft conversion, it will need to comply with the current building regulations.

The main governing documents are Building Regulations Part K (domestic and commercial). Part M (Ambulant stairs

in commercial settings) and British Standard 5395 for both domestic and commercial spiral and helical staircases.

Extracts from all these documents are available on our website.

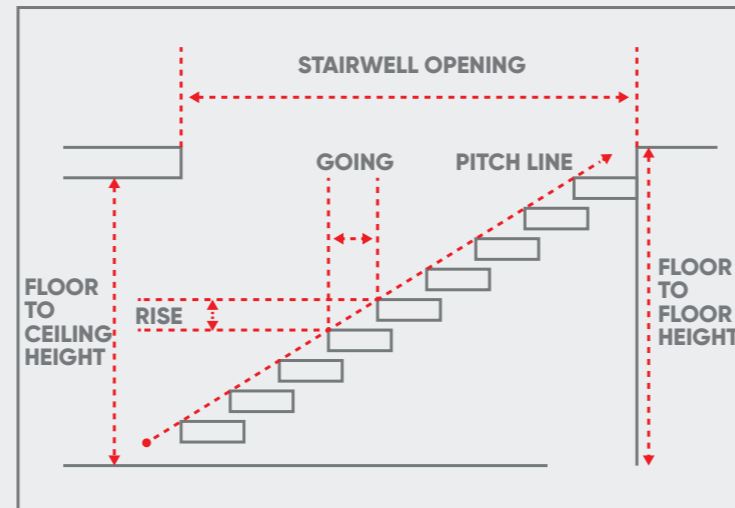
Many of our staircases are manufactured abroad where regulations are different. Some models have horizontal

bars or wire in the balustrade or have open risers which are not permitted within the UK. Some of the pictures in this brochure and on our website do show staircases that contravene the regulations, but these can easily be adapted to conform. If you have any questions regarding building regulations, please contact the office directly on 01794 522444.

Guidance for Straight Staircases

STRAIGHT/QUATER/HALF TURN			
Main Stair		Secondary Stair	
Max Rise	220mm	Max Rise	220mm
Min Going	220mm	Min Going	220mm
N.B. Pitch line should not exceed 42°		N.B. Pitch line should not exceed 42°	
Clear Tread Width	800mm*	Clear Tread Width	600mm

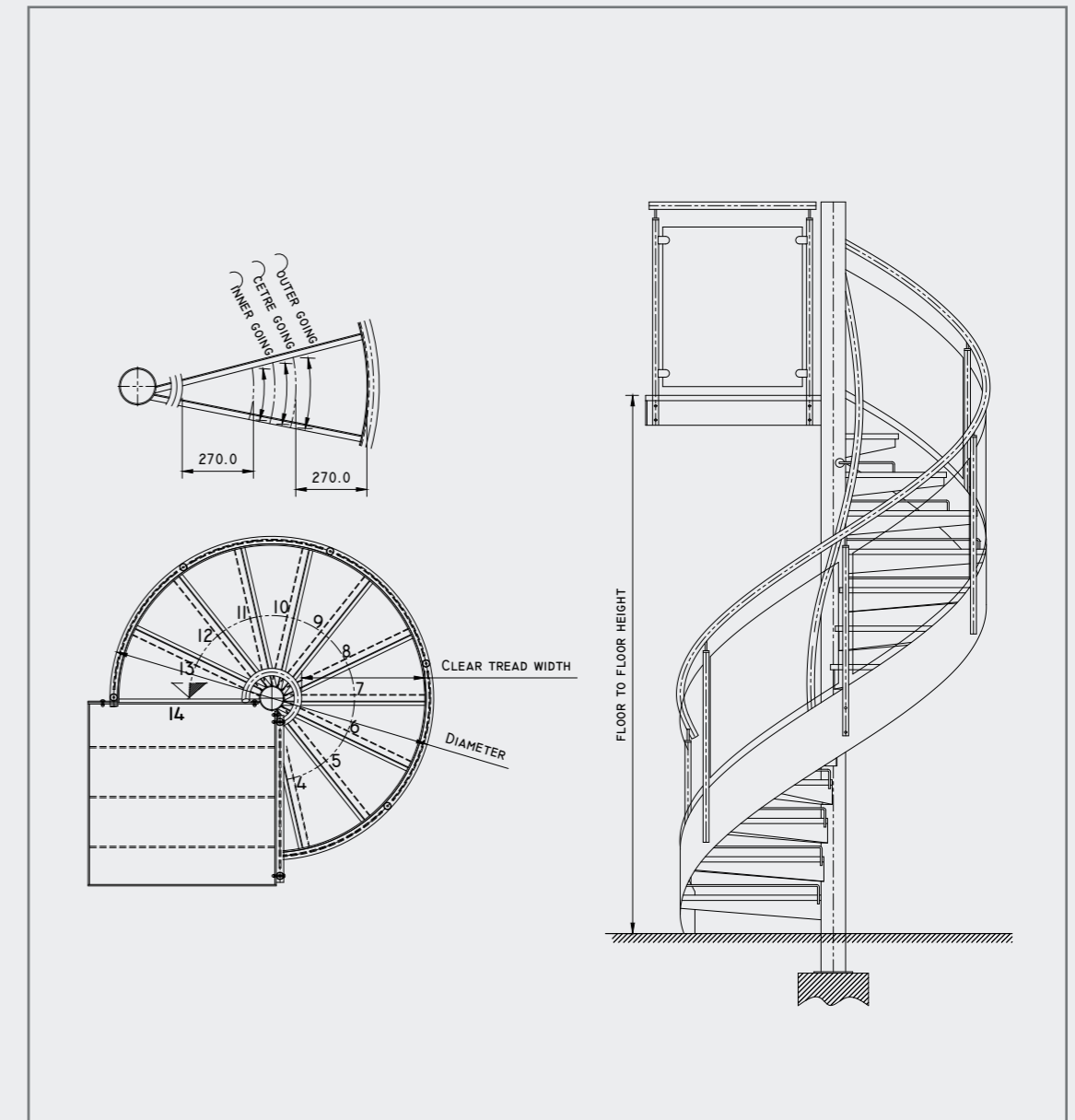
* Building Regulation do not specify a clear tread width for straight stairs. Measurements are for guidance only.



Spiral Stair Regulations

EXTRACT FROM BS5395 part 2	Minimum Clear Tread Width	Riser Height	Minimum Inner Going	Minimum Centre Going	Maximum Outer Going
Category A – Small Private Stair Secondary domestic stair intended to be used by a limited number of people who are generally familiar with the stair.	600mm – typical minimum diameter 1500mm	170-220mm	120mm	145mm	350mm
Category B – Main Private Stair Similar to category A but also providing the main access to the upper floor of a private dwelling.	800mm – typical minimum diameter 1800mm N.B – 900mm in Scotland	170-220mm	120mm	190mm	350mm
Category C – Small Semi Public Stair Small commercial stair providing access for up to 50 people. Intended to be used by those generally familiar with the stair. Centre column handrail required.	800mm – typical minimum diameter 2000mm	170-220mm	150mm	230mm	350mm

Typical Spiral Staircase Layout



COME & VISIT OUR SHOWROOM

Our external spiral staircases are supplied to both commercial and domestic clients. Nothing beats touching and feeling the quality of these staircases and we have several displayed in our showroom here in Romsey. We are open 9-5 Monday to Friday so please get in touch and arrange an appointment. Currently, we have a full flight model 500 staircase, a full height custom made spiral and a full flight WF Floating timber staircase. As well as these models we have six mini 5-6 tread display units of the Genius, Model 76 and the 500. Please call and book a showroom visit, we would love to meet you.







01794 522444

info@completestairsystems.co.uk

www.completestairsystems.co.uk

Complete Stair Systems Ltd, Unit 15 Belbins Business Park, Cupernham Lane, Romsey, Hampshire, SO51 7JF