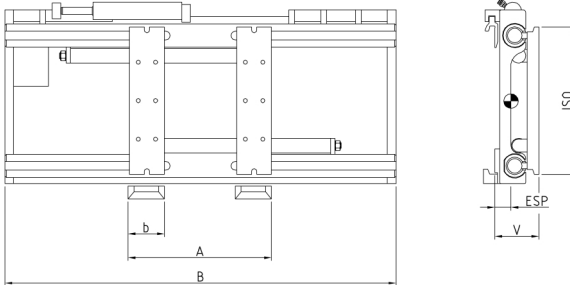


Sideshifting fork positioner

RZV-S
ISO II/III

Constant sideshift, no forks

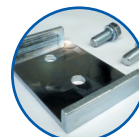
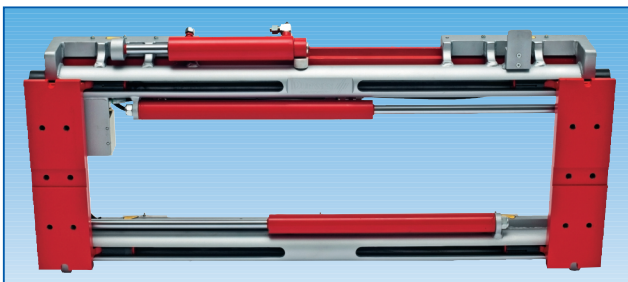
The **sideshifting fork positioner type RZV-S** uses stable tube guides for positioning of forks. The simple design offers reliability and excellent operator visibility. Hook-on forks can be used. The constant sideshift operates at any fork position.



type	lift truck capacity tons	capacity kg/mm LC	ISO	B mm	opening range A mm	b mm	sideshift mm	V LLC mm	ESP COG mm	weight kg
RZV 25 S	1,5-2,5	2500/500	II	980	490-1060	120	+/- 100	142	45	135
				1000	490-1080				45	138
				1040	490-1120				45	142
				1100	490-1180				48	147
				1150	490-1230				50	150
				1200	490-1280				50	152
				1350	490-1430				50	160
RZV 30 S	3,0	3000/500	III	1040	490-1120	125	+/- 100	152	55	168
				1100	490-1180				57	174
				1150	490-1230				60	181
				1200	490-1280				60	187
				1350	490-1430				60	195
RZV 35 S	3,5	3500/500	III	1100	490-1180	140	+/- 100	152	63	183
				1150	490-1230				62	188
				1200	490-1280				62	194
				1350	490-1430				62	203
RZV 45 S	4,0-5/600	5000/600	III	1150	490-1230	150	+/- 100	168	70	235
				1200	490-1280				70	239
				1250	490-1330				70	244
				1300	490-1380				70	247
				1350	490-1430				70	250
				1450	490-1530				70	258
				1550	490-1630				70	265

- Includes hoses and couplings
- 2 hydraulic functions required

- Clamping of goods not allowed / possible
- Load backrest see accessories



fork retainer

DURWEN 
Forklift Attachments

More than 60 years experience