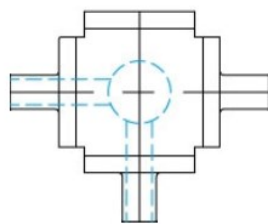
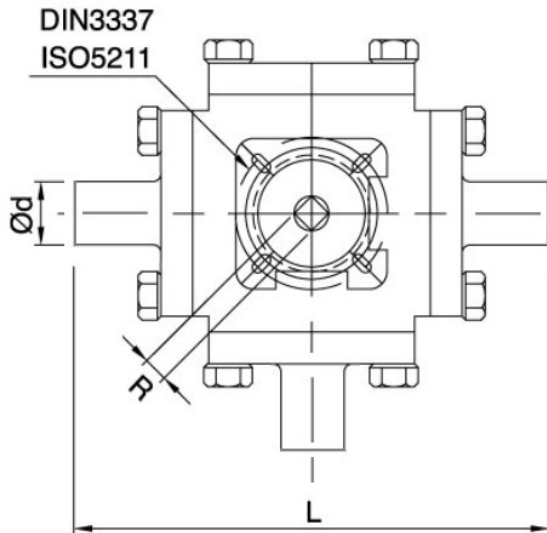


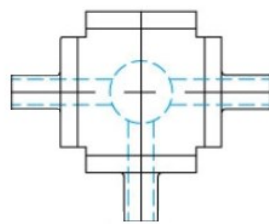


BDE (NORTHAMPTON) LTD

3 WAY L / T PORT BALL VALVE



L PORT



T PORT

3 WAY VALVE INFORMATION:

- Body & Wetted parts grade 316 stainless steel.
- Stocked from 1/2" OD - 3" OD.
- 'L' & 'T' configuration
- Weld ends available ex-stock - Alternative ends can be supplied on request.
- Hygienic standard.
- Full bore design.
- PTFE Cavity seat - Crevice free.
- Max working pressure up to 10 Bar.
- Standard ISO Mounting pad
Full Actuation package available from stock
- Spares kit available

• SANITARY BALL VALVE - 3 WAY "L" & "T" PORT 316

SIZE	1/2"	3/4"	1"	1.5"	2"	2.5"	3"
ISO 5211	F03	F03	F04	F05	F05	F07	F10
Ød	12.7	19.05	25.4	38.1	50.8	63.5	76.2
Torque LB/IN*	90	100	140	240	480	650	1150
R	9.0	9.0	11.0	14.0	14.0	17.0	22.0
L	118.0	127.0	152.0	175.0	190.0	228.0	260.0

*TORQUE DOES NOT INCLUDE SAFETY & IS BASED ON WATER.