

## MAIN COOLING WATER PUMPS PROTECTED WITH BELZONA

### CUSTOMER

Coal fired power station - UK

### APPLICATION DATE

2004

### APPLICATION SITUATION

Allen Gwynnes cooling pumps. These pumps are capable of delivering 120,000 gallons of cooling water per minute.

### PROBLEM

Erosion corrosion particularly on main wearing rings, cut water and delivery tubes.

### PRODUCTS

Belzona® 1111 (Super Metal)

Belzona® 1341 (Supermetalglide)

### SUBSTRATE

Cast iron

### APPLICATION METHOD

Carried out in accordance with Belzona system leaflets CEP-1 and CEP-3. Particular attention was paid to surface preparation with repeated steam cleaning and grit blasting used to remove salt contamination.

### BELZONA FACTS

A competitive ceramic coating had previously been used. Although lower in cost it did not provide the efficiency enhancement that Belzona® 1341 does with its subsequent pay-back. Application still OK in 2007.

### PICTURES

1. Scale of pumps can be gauged from the delivery tubes
2. Suction side coated
3. Degree of corrosion evident on the delivery tubes
4. Completed coating



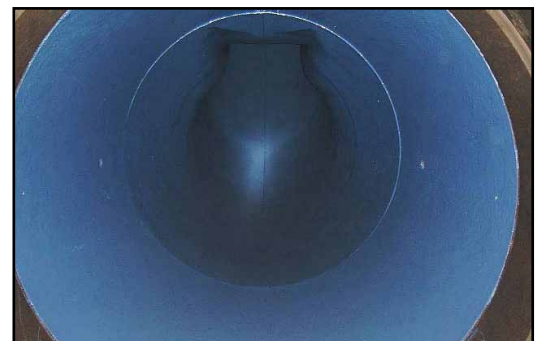
1.



2.



3.



4.

For more examples of *Belzona Know-How In Action*, please visit <http://khia.belzona.com>



Belzona products are manufactured under an ISO 9000 Registered Quality Management System.

UK • USA • Canada • China  
[www.belzona.com](http://www.belzona.com)

