



C H E F S W E A R



PORTWEST®

Welcome to



Founded in 1904, Portwest have successfully met the chefswear needs of a wide variety of organisations and chefs, for nearly one hundred years.

Portwest are delighted to offer you a brand new collection of specialist chefswear and food preparation garments.

Performance in Chefswear

Portwest believe success comes from setting exceptional standards of performance in every aspect of the garment.

Our designers and product developers are constantly seeking to improve the range as a result of user feedback, wearer trials, innovation and also in the following ways:

- Comfort in all working conditions.
- Fabric performance - new fabric coatings and finishes.
- Functionality & practicality of the garment.
- Professional image of our clients
- 'Stand out from the Crowd'
- More comprehensive choice of style and colour.
- Safety in the workplace.

All the styles in the brochure are ready for immediate delivery. Our policy is to always offer the best possible quality and value to our customers. You look and feel better when wearing Portwest!

PORTWEST

C834



C834



Somerset Jacket

C834 - Somerset Jacket

Cuff vent. Reversible front.
Unisex Fit, Detachable buttons.

Size: XS - XXL

Fabric: Kingsmill 245g

65% Polyester 35% Cotton

Col X: White.

Col Y: Royal, Navy.

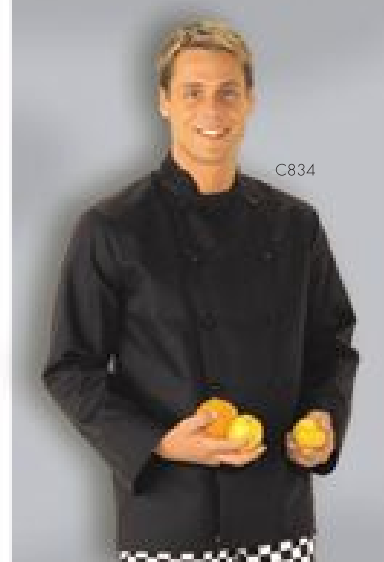
Col Z: Black, Red.



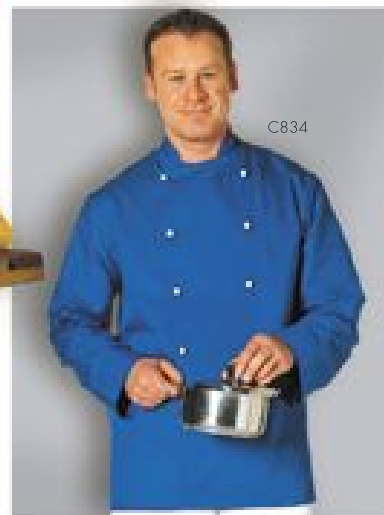
C834



C834



C834



C834



Polyester Cotton Jackets

Fabric
Kingsmill 245g
65% Polyester
35% Cotton

C831 Cornwall Chef Jacket.

Cuff vent. Texpel liquid repellent finish.
Reversible Front. Unisex Fit
Size: XS – XXXL
Colour: White

24



C831

C829 Devon Contrast Chef Jacket.

Cuff vent. Texpel liquid repellent finish
Reversible Front. Unisex Fit
Size: XS – XXXL
Colour: White

24



C829

C823 Oxford Jacket.

Contrast black collar. Cuff vent.
Sleeve pen pocket.
Reversible Front. Unisex Fit
Size: XS – XXXL
Colour: White

24

S822 Dorset Crossover Jacket.

Concealed stud front.
Sleeve pen pocket.
Reversible Front. Unisex Fit
Size: XS – XXL
Colour: White

24

C833 Suffolk Chef Jacket

Stud front.
Reversible Front. Unisex Fit
Size: XS – XXXL
Colour: White

24

TEXPEL is a durable stain resistant finish, which protects your garment against everyday spills without changing the feel or comfort of the garment. Liquids bead up and roll off the garment and spills can be quickly cleaned up.

Texpel

Texpel



C823



S822




C833


Cotton Jackets

Fabric:
100% Cotton
Satin weave
280g


C835 Surrey Chefs Jacket.

Cuff vent.
Size: XS – XXXL
Reversible Front. Unisex Fit 
Colour: White

C836 Sussex Chefs Jacket.

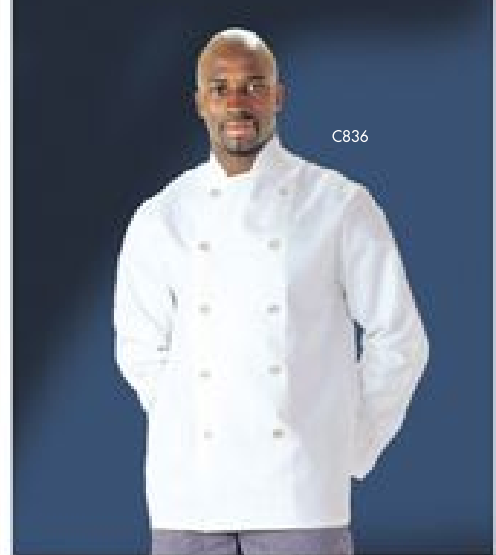
Rubber button.
Size: XS – XXXL
Reversible Front. Unisex Fit 
Colour: White

C858 Norfolk Chefs Jacket.

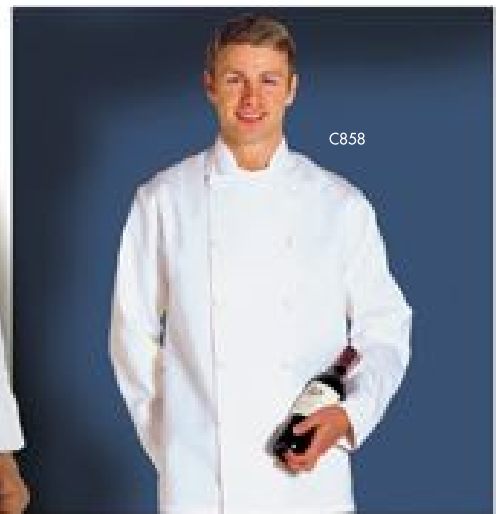
Cuff vent. Cloth effect button.
Size: XS – XXXL
Reversible Front. Unisex Fit 
Colour: White



C835



C836



C858

Full Elasticated Trousers

C070 Drawstring Trousers

Two side pockets. Drawstring waist.
Texpel liquid repellent finish.

Size: XS – XXL

Fit: Regular (31"/79cms) Tall (33"/84cms)

Fabric: Kingsmill 245g

65% Polyester 35% Cotton

Col X: Blue & White Chessboard

Col Y: Harlequin



C070



C079

C079 Bromley Chefs Trousers

One hip pocket. (No side pockets).
Concealed zip fly fastening.

Size: XS – XXL

Fit: Regular (31"/79cms) Tall (33"/84cms)

Fabric: 100% Cotton 190g

Blue/White Check



C070



C070

TEXPEL is a durable stain resistant finish, which protects your garment against everyday spills without changing the feel or comfort of the garment. Liquids bead up and roll off the garment and spills can be quickly cleaned up.



Back Waist Elastication

S068 Harrow Chefs Trousers

Two side pockets. One hip pocket.

Zip fly with hook and bar fastening.

Size: XS - XXXL

Fit: Regular (31"/79cms) Tall (33"/84cms)

Fabric: Kingsmill 245g

65% Polyester 35% Cotton

Col X: Black Chessboard,

Red Chessboard.

Col Y: Black & White Houndstooth.

Col Z: Zebra

24



S068



S068



S068
Houndstooth



C075
100% Cotton

C075 Barnet Chefs Trousers

Two side pockets.

One hip pocket.

Zip fly with hook and bar fastening.

Size: XS - XXXL

Fit: Regular (31"/79cms)

Tall (33"/84cms)

Fabric: 100% Cotton 190g

Blue/White Check

24



S068



Full Waist

S885 Mayo Trousers

Two side pockets. Sewn-in crease.

One jetted hip pocket with button.

Zip fly with hook & bar fastening.

Size: 72 - 128 cms

Fit: Regular (31"/79cms) Tall (33"/84cms)

X Tall (36"/92cms)

Fabric: Tradeguard 245g

65% Polyester 35% Cotton

Navy, Royal, White, Black, Red, Postman Spruce.

Bottle Green, Graphite, Maroon, Blade,

24

S886 Pleated Trousers

Two side pockets. Front waist pleats

One jetted hip pocket with button.

Zip fly with hook & bar fastening.

Size: 72 - 128cms

Fit: Regular (31"/79cms) Tall (33"/84cms)

X Tall (36"/92cms)

Fabric: Tradeguard 245g

65% Polyester 35% Cotton

Navy, Royal, White, Red, Postman, Bottle

Green, Maroon, Blade, Spruce, Black, Graphite.

24

S684 Dartford Chefs Trousers

Two side pockets.

One jetted hip pocket with button.

Zip fly with hook & bar fastening.

Size: 72 - 128cms

Fit: Regular

(31"/79cms)

Tall (33"/84cms)

Fabric: 65% Polyester

35% Cotton 190g

Blue/White Check

24

S884 Greenwich Chefs Trousers

Two side pockets.

One jetted hip pocket with button.

Zip fly fastening with hook & bar.

Size: 72 - 128cms

Fit: Regular (31"/79cms) Tall (33"/84cms)

Fabric: 100% Cotton 190g

Blue/White Check

24

TRADE
GUARD



S684

65% Polyester 35% Cotton

S885

S886

S884

100% Cotton



S884

Bib Aprons

STYLE S841

S841 Polyester Cotton-Bib Apron
Width 28" X Height 42"
Non-tangle ties. Ties to front
Fabric: Kingsmill 245g
65% Polyester 35% Cotton

72

Col W: White

Col X: Navy, Royal, Black, Red

Col Y: Chessboard Black

Chessboard Red, Chessboard Blue

Col Z: Zebra, Harlequin,



All printed aprons have Texpel liquid repellent finish



Waist Aprons

STYLE S894

S894 Waist Apron
Width 28" X Height 30"

Nonrattle ties.

Fabric: Kingmill 245g

65% Polyester 35% Cotton



Col W: White

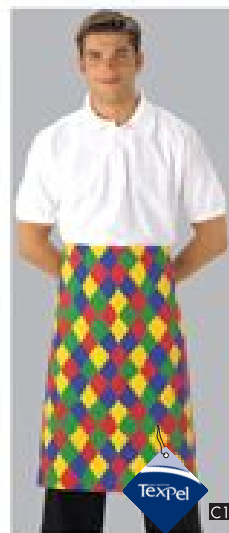
Col X: Navy, Royal, Black, Red

Col Y: Chessboard Black

Chessboard Red, Chessboard Blue

Col Z: Zebra, Harlequin,

All printed aprons have Texpel liquid repellent finish



Chefs Skull Caps

S899 Chefs Skull Cap
Adjustable back
Fabric: Kingsmill 245g
65% Polyester 35% Cotton **144**
Col X: White
Col Y: Check, Red, Royal, Black
Col Z: Harlequin, Zebra, Chessboard Blue, Chessboard Black, Chessboard Red

Neck Ties

S888 Neck Scarf
Triangular shape, 100cm X 70cm
Fabric: Kingsmill 245g
65% Polyester 35% Cotton **144**
Col X: White,
Col Y: Check, Black, Royal, Red
Col Z: Harlequin, Zebra, Chessboard Blue, Chessboard Black, Chessboard Red.

All printed Hats and Neck ties have Texpel liquid repellent finish



S899

S888



Baseball Cap adjusters on all Skull Caps

FITS ALL SIZES

Caps & Hats

C600 Trilby Hat
Small to X large. **10**
Fabric: Nylon mesh. White

C601 & C602 Pol Pleated Hat
Adjustable size. Material: Paper.
White
C601 (inner pack 50)

C602 **250**

C830 Hair Net
Elasticated, 100 per bag.
Fabric: Polypropylene
White

S896 Snood Cap
Back neck snood
Elasticated back. **144**
Fabric: 100% Cotton 280g
Navy, White

S895 Pork Pie Cap
Elasticated back.
Fabric: 100% Cotton 280g **144**
Navy, White

S892 Legion Cap
Elasticated back. **144**
Fabric: 100% Cotton 280g
White



C600



C601
C602



C830



S896



S895



S892

Tabards



Fabric:
Kingsmill 245g
65% Polyester
35% Cotton

S842 Plain Tabard

No pocket.

Adjustable side straps.

Size: S/M - L/XL - XXL

Length S/M - 79cms, L/XL & XXL - 86cms

Navy, White, Royal, Red, Bottle Green, Maroon



S842

S843 Tabard With Pocket

Adjustable side straps.

Size: S/M - L/XL - XXL

Length S/M - 79cms, L/XL & XXL - 86cms

Navy, White, Black, Royal, Red, Bottle Green, Maroon



NEW
SIZE
XXL

S843

S844 London Tabard

Adjustable side straps.

Front pocket. Length - 82cm

Size: S/M - L/XL

Navy, White, Royal, Red



S844



Maroon

Bottle Green



Black

White

Aprons

W=WIDTH H= HEIGHT

Butchers Apron

S839 Apron W28" X H42"

Ties to front. Non tangle ties.

Fabric: 100% Cotton 280g
Red/White, Navy/White

72

Large Apron

S898 Apron W36" X H36"

Ties to front. Non tangle ties.

Fabric: 100% Cotton 280g
White

72

Regular Apron

S837 Apron W36" X H30"

Ties to front. Non tangle ties.

Fabric: 100% Cotton 280g
White

72

Bar Apron

S845 Apron W28" X H15"

Ties to front. Front Pocket. Non
tangle ties.

Fabric: Kingsmill 245g

Col X: White

Col Y: Black

72

Bib Apron

S840 Apron W28" X H42"

Ties to front. Non tangle ties.

Fabric: 100% Cotton 280g

Col X: White

Col Y: Navy

72

S824 Cambridge Polo Shirt

Fabric: Kingsmill 190g

Size: Small to XXX Large.

White

24

S839



S898



S824



S845



S839



S837



S840





TEXPEL is a durable stain resistant finish, which protects your garment against every day spills without changing the feel or comfort of the garment.

TEXPEL protective finish is applied during the manufacture of the fabric. While many stain resistant products are merely a surface coating for fabrics, TEXPEL works on the molecular level, protecting every fibre.

TEXPEL is an invisible shield that protects fabrics against spills and soiling. Liquids bead up and roll off the garment and spills can be quickly cleaned up.

TEXPEL also aids the release of stains during laundering. After the garment is laundered, warm ironing or tumble drying will optimise the performance of TEXPEL.

TEXPEL has a tough finish and generally lasts the life of the garment.



KINGSMILL fabric is constructed to the highest specifications, is fully pre-shrunk, has superior dye retention and all the necessary features you would expect from a modern workwear fabric. Available in fabric weight 245gm. Fabric Composition - 65% Polyester, 35% Cotton which guarantees durability and maximum comfort. Only available from Portwest.



This indicates how many garments are packed per carton. All Portwest garments are available one size and one colour per carton. This helps you to plan and receive your garments in carton quantities if you wish.

SIZING GUIDE

The labelling and size designation of our garments comply to ISO 3635:1981 and EN340 :1993 standards.

The measurements on the labels and on the size chart below are for the wearers body size, not measurements of finished garments. All neck labels state a height and at least one girth measurement. i.e. height and chest. Portwest chefswear garments comply with BS1 5426:1993 workwear and career wear standard.

To guarantee the best possible fit, great care is taken to ensure standardised sizing for all garments throughout this brochure.

Chest Girth Measurement Conversion Chart

Metric Sizes	68	72	76	80	84	88	92	96	100	104	108	112	116	120	124	128	132	136	140	144	148	
Imperial Sizes	26	28	30	32	34	36	38	40	42	44	46	48	50	52	54	56	58	60	62	64	66	
Mens Euro Sizes	36	38	40	42	44	46	48	50	52	54	56	58	60	62	64	66	68	70	72	74	76	
Chefs & Mens Styles	XS						S		M		L		XL		XXL		XXXL					
Screen Stars T-Shirt							S		M		L		XL		XXL		XXXL					
Ladies Sizes							8	10	12	14	16	18		20	22	24	26					
Ladies Coat 2205							XS	S	M		L	XL		XXL	XXL							
Ladies Tabards							SM				L/XL											

Waist Girth Measurement Conversion Chart

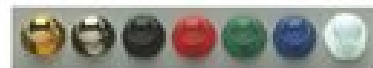
Metric Sizes	68	72	76	80	84	88	92	96	100	104	108	112	116	120	124	128	132	136	140	144	148
Imperial Sizes	26	28	30	32	34	36	38	40	42	44	46	48	50	52	54	56	58	60	62	64	66
Mens Euro Sizes	40	42	44	46	48	50	52	54	56	58	60	62	64	66	68	70	72	74	76	78	80
Chefs Trousers	XS					S			M			L			XL			XXL			

Embroidery



The finishing touch for a unique corporate image is to identify each garment with your company name or logo. Portwest's specialised service uses state of the art, computer controlled machines to embroider garments as boldly or discreetly as you require. Garments can be embroidered with your company logo and personalised with individual names and job titles giving you increased site security, wearer identification and above all a quality image. Our specialist production team are trained to operate the latest 'state of the art' CAD and computer controlled embroidery machines. Simply send us your design and leave the rest to us.

Popper Buttons



Gold Silver Black Red Green Blue White

S832 Pack of Popper Buttons
12 of same colour button per bag
100% Nylon
Col X: White
Col Y: Black, Red, Green, Blue.
Col Z: Gold, Silver

While we try to portray our products as accurately as possible, colours may vary slightly due to the printing process.

'Ask your distributor for the other brochures in the Portwest Range - Rainwear & High Visibility brochure, Workwear brochure & Value Workwear brochure.'