

- FIRE ALARM**
- MANUAL CALL POINT C/W ISOLATOR
  - ⊙ SMOKE DETECTOR
  - ⊙ SMOKE DETECTOR C/W SOUNDER
  - ⊙ SMOKE DETECTOR C/W SOUNDER/VAD
  - ⊙ HEAT DETECTOR
  - ⊙ HEAT DETECTOR C/W SOUNDER BASE
  - ⊙ HEAT DETECTOR C/W SOUNDER/VAD
  - ⊙ MULTISENSOR DETECTOR
  - ⊙ MULTISENSOR DETECTOR C/W SOUNDER BASE
  - ⊙ MULTISENSOR DETECTOR C/W SOUNDER/VAD
  - ⊙ SOUNDER BASE C/W CAP
  - ⊙ SOUNDER VAD BASE C/W CAP
  - ⊙ WALL SOUNDER/VAD
  - ⊙ WALL SOUNDER
  - ⊙ REMOTE FIRE INDICATOR
  - ⊙ MAGNETIC DOOR HOLDER
  - IFU FIRE ALARM INTERFACE UNIT C/W ISOLATOR
  - CIE FIRE ALARM CONTROL PANEL
  - PSU FIRE ALARM POWER SUPPLY UNIT
  - 'v' INDICATES VOID DETECTOR
  - 'b' INDICATES BLACK DETECTOR

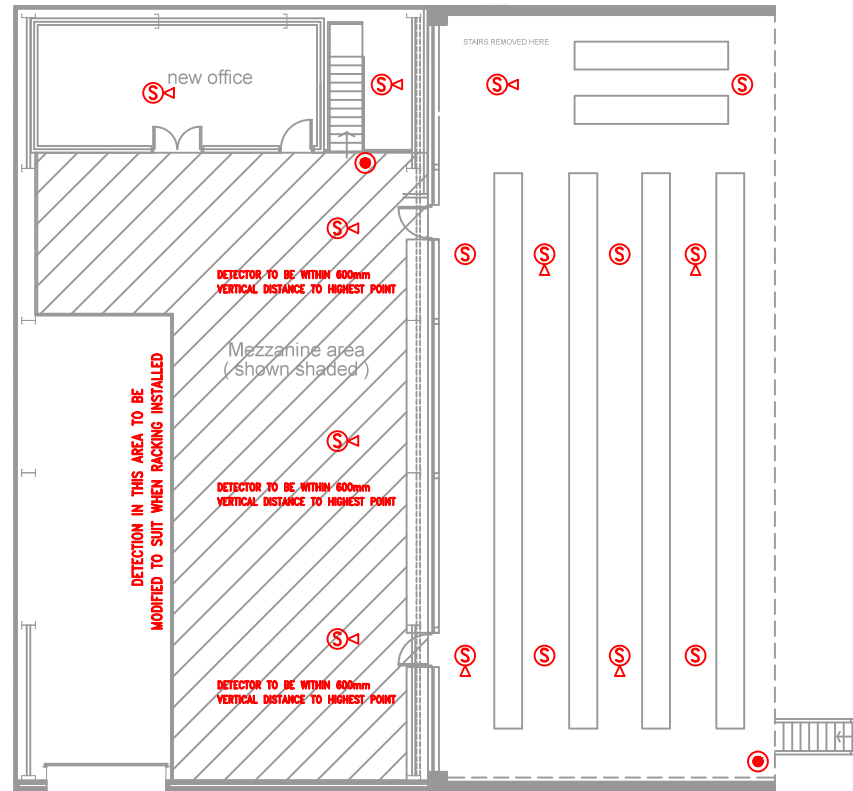
**NOTES:**  
 PANEL IS A 2 LOOP VARIANT, LOOPS TO BE SPLIT EQUALLY ACROSS SITE  
 TO BE WIRED IN 1.5mm 2C+E FP200 GOLD OR SUITABLE APPROVED ALTERNATIVE, MAXIMUM LOOP RESISTANCE 15.0 OHMS  
 ALL DEVICES TO BE LOOP POWERED  
 HEAT SENSORS USED THROUGHOUT KITCHEN AREA TO AVOID FALSE ALARMS  
 ALL DETECTORS TO BE A MINIMUM OF 500mm FROM ANY PARTITION OR OBSTRUCTION  
 ALL CEILING VOIDS OVER 800mm IN DEPTH REQUIRE DETECTION TO COMPLY WITH BS5839-1 2013. PLEASE ADVISE IF ANY FURTHER VOIDS NOTED DURING INSTALLATION.  
 PANEL MAINS FEED TO BE WIRED IN FIRE RATED CABLE WITH APPROVED DOUBLE POLE ISOLATOR TO BS5839-1 SECTIONS 25.2 & 29.2 AT PANEL POSITION  
 NO PROVISION TO COMPLY WITH DDA ALLOWED AT THIS POINT  
 INTEGRATED BEACONS ARE ALLOWED FOR PRIMARY ANNUNCIATION COMPLEMENT THE EN54-20 SOUNDERS SHOWN.  
 AGREED VARIATION TO NOT COVER SMALLER LIGHT WELLS

**ISSUE DETAIL**  
 ISSUE A - 17/03/17: ORIGINAL ISSUE  
 ISSUE B - 21/03/17: VOIDS ADDED, DETECTION ALTERED

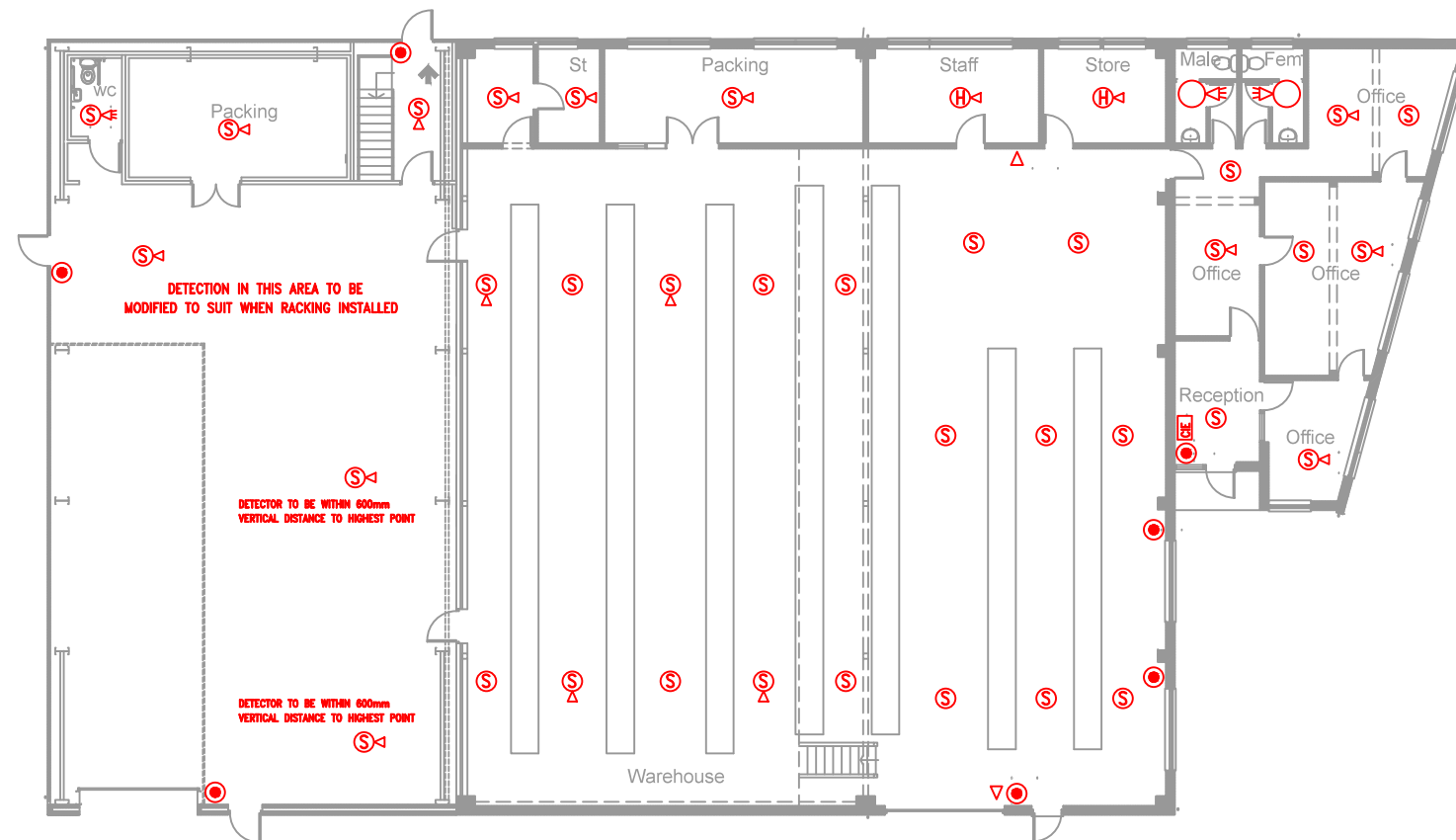
**DESIGN**

0845 519 8186 S2FIRE.CO.UK  
 SALES@S2FIRE.CO.UK

Client: SAMPLE CONTRACTING SAMPLE STREET SAMPLEVILLE, SB2 2SB		
Project: SAMPLE PROJECT SAMPLE ROAD SAMPLETON, SA1,1SA		
Title: FIRE ALARM DESIGN		
Scale: NTS	Date: 21/03/2017	Drawn: SGM
Drawing No: XXXX/D	Rev: B	



MEZZANINE



GROUND FLOOR

- FIRE ALARM**
- MANUAL CALL POINT C/W ISOLATOR
  - ⊙ SMOKE DETECTOR
  - ⊙ SMOKE DETECTOR C/W SOUNDER
  - ⊙ SMOKE DETECTOR C/W SOUNDER/VAD
  - ⊙ HEAT DETECTOR
  - ⊙ HEAT DETECTOR C/W SOUNDER BASE
  - ⊙ HEAT DETECTOR C/W SOUNDER/VAD
  - ⊙ MULTISENSOR DETECTOR
  - ⊙ MULTISENSOR DETECTOR C/W SOUNDER BASE
  - ⊙ MULTISENSOR DETECTOR C/W SOUNDER/VAD
  - SOUNDER BASE C/W CAP
  - SOUNDER VAD BASE C/W CAP
  - ◄ WALL VAD
  - ◄ WALL SOUNDER
  - ⊗ REMOTE FIRE INDICATOR
  - ⊔ MAGNETIC DOOR HOLDER
  - ⊔ FIRE ALARM INTERFACE UNIT C/W ISOLATOR
  - ⊔ FIRE ALARM CONTROL PANEL
  - ⊔ FIRE ALARM POWER SUPPLY UNIT
  - 'V' INDICATES VOID DETECTOR
  - 'B' INDICATES BLACK DETECTOR

**NOTES:**

PANEL IS AN 8 ZONE BI-WIRE VARIANT, SINGLE PANEL ENVISAGED FOR THE COMPLETE UNIT TO BE WIRED IN 1.5mm 2C+E FP200 GOLD OR SUITABLE APPROVED ALTERNATIVE, MAXIMUM CIRCUIT RESISTANCE 10.0 OHMS

ALL DEVICES TO BE ZONE POWERED

HEAT SENSORS USED THROUGHOUT KITCHEN AREA AND PLANT ROOM TO AVOID FALSE ALARMS

ALL DETECTORS TO BE A MINIMUM OF 500mm FROM ANY PARTITION OR OBSTRUCTION

ALL CEILING VOIDS OVER 800mm IN DEPTH REQUIRE DETECTION TO COMPLY WITH BS5839-1 2013. PLEASE ADVISE IF ANY NOTED DURING INSTALLATION.

PANEL MAINS FEED TO BE WIRED IN FIRE RATED CABLE WITH APPROVED DOUBLE POLE ISOLATOR TO BS5839-1 SECTIONS 25.2 & 29.2 AT PANEL POSITION

NO PROVISION TO COMPLY WITH DDA ALLOWED AT THIS POINT

INTEGRATED BEACONS ARE ALLOWED FOR SECONDARY ANNUNCIATION ONLY TO COMPLEMENT THE EN54-20 SOUNDERS SHOWN, SHOULD BEACONS BE REQUIRED FOR PRIMARY ANNUNCIATION TO EN54-23 PLEASE ADVISE.

**ISSUE DETAIL**  
 ISSUE A - 08/03/17: ORIGINAL ISSUE

© DESIGN COPYRIGHT S2 FIRE SOLUTIONS LIMITED

DESIGN

0845 519 8186 S2FIRE.CO.UK  
 SALES@S2FIRE.CO.UK

Client: SAMPLE SITE SAMPLE STREET SAMPLEVILLE, SA1 1SA		
Project: SAMPLE PROJECT SAMPLE ROAD SAMPLETON, SA1 1SA		
Title: FIRE ALARM DESIGN		
Scale: NTS	Date: 08/03/2017	Drawn: SGM
Drawing No. XXXX/D		Rev. A