

LOCATION – NEXT TO MINE

BERKWOOD
resources ltd

TSX-V: BKR
FSE: BK2N
WKN: A2DNV4

“The best place to look for a new mine is in the shadow of head frames.” Where there is one mine there is often others!





Quebec 4th most attractive mining district.

Fraser Institute Survey

QUÉBEC RANKED 4TH BEST MINING JURISDICTION WORLDWIDE BY THE FRASER INSTITUTE : THE QUÉBEC MINING ASSOCIATION DELIGHTED BY QUÉBEC'S OVERALL PERFORMANCE AND ANXIOUS TO SEE IT REGAIN 1ST PLACE

28/02/2019

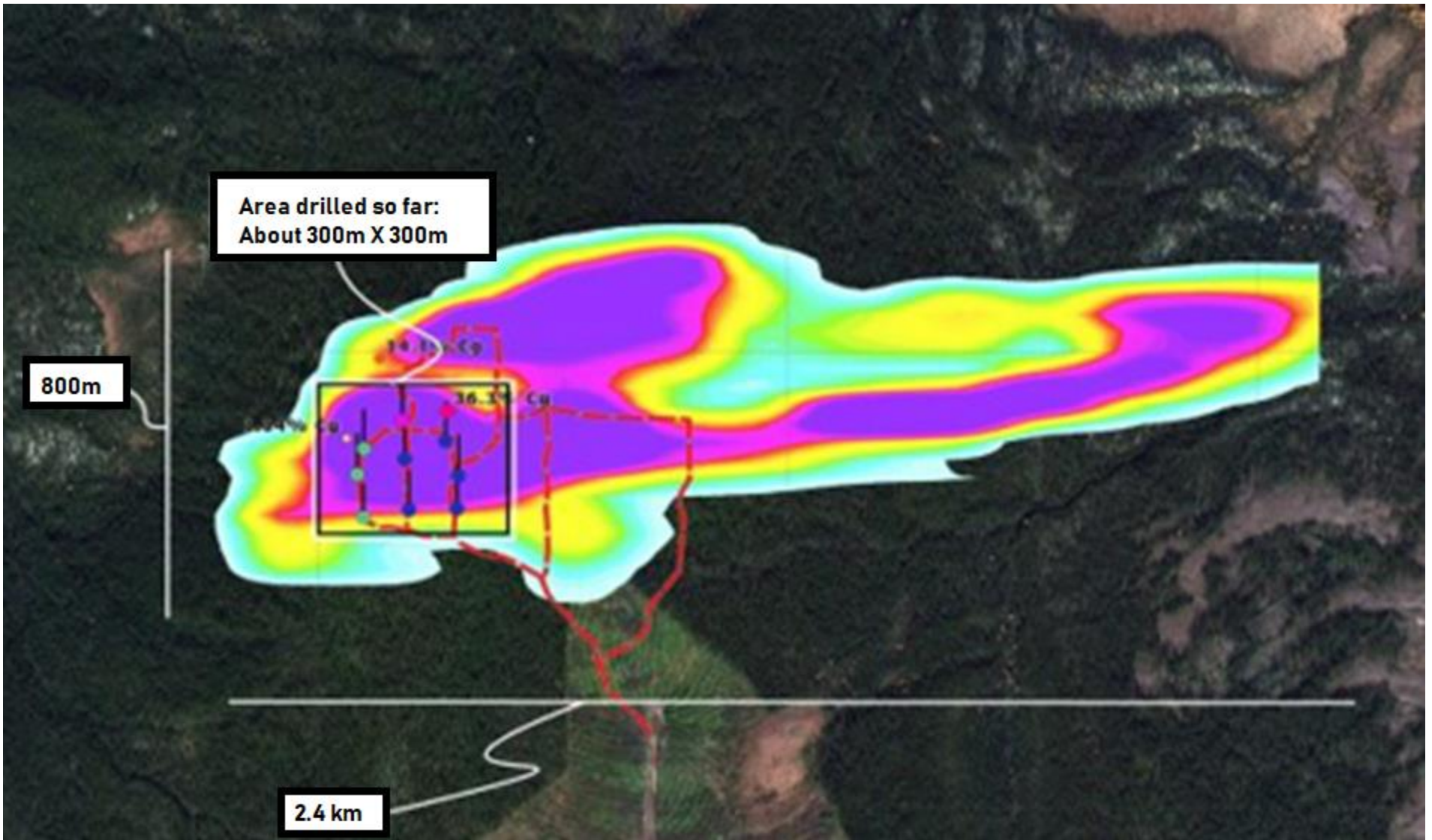
[Press Releases](#)

Québec City, February 28, 2019 – Québec continues to progress in the annual Fraser Institute survey of the mining sector, rising from 6th to 4th place worldwide as an attractive destination for mining investment. This improvement is viewed in a positive light by the Québec Mining Association (QMA), which has made every effort over the last five years to persuade governments to establish measures and actions that will increase Québec's international presence and attract investors.

Mines Canada (<https://www.minescanada.ca/en/content/mining-canada-0>)

Canada's competitive position

Canada has a long and successful history of sustainable mineral development and a strong, well-earned reputation as a leading mining nation. For example, in 2016 it received the Best Country Award for international leadership in governance and for showing the most improvement in terms of attractiveness to investors. ¹ It is recognized as the safest place to invest resource capital.



FROM NI 43-101*

*See News Release: Aug 19th 2019: **Berkwood files robust pit constrained mineral resources at its Lac Guéret South Project on SEDAR**

DMineral Resource Category	Current Resource 43-101 Resource (June 2019) ⁸			Cut off (% Cgr) ³
	Tonnage (Mt) ^{5,7}	Grade (% Cgr) ³	Cgr (t) ⁶	
Indicated	1,76	17.00	299,200	6.81%
Inferred⁴	1,53	16.4	250,200	6.81%

Characteristics	Main	Layer 01
Length (m) ¹	290	340
Azimuth (°)	80	42
Maximum width (m)	130	35
Surface Area (km ²)	0.13	

Parameters	Values
Operating Cost	92 \$/t
Recovery	90%
Selling Price Cg	1,153 \$/t







Outcrop 2: 15m of channel sampling at 27.87% graphite

Outcrop 3: Rock samples up to 20%+ graphite

Outcrop 1: 43m of channel sampling at 24.17% graphite

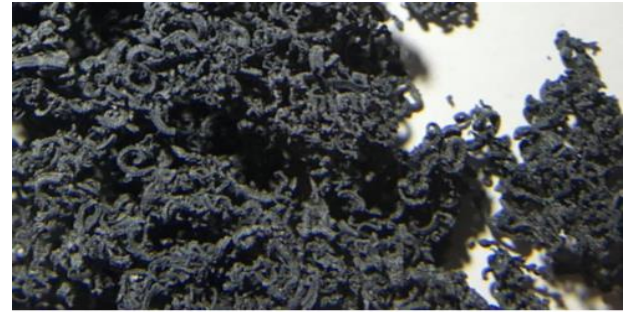
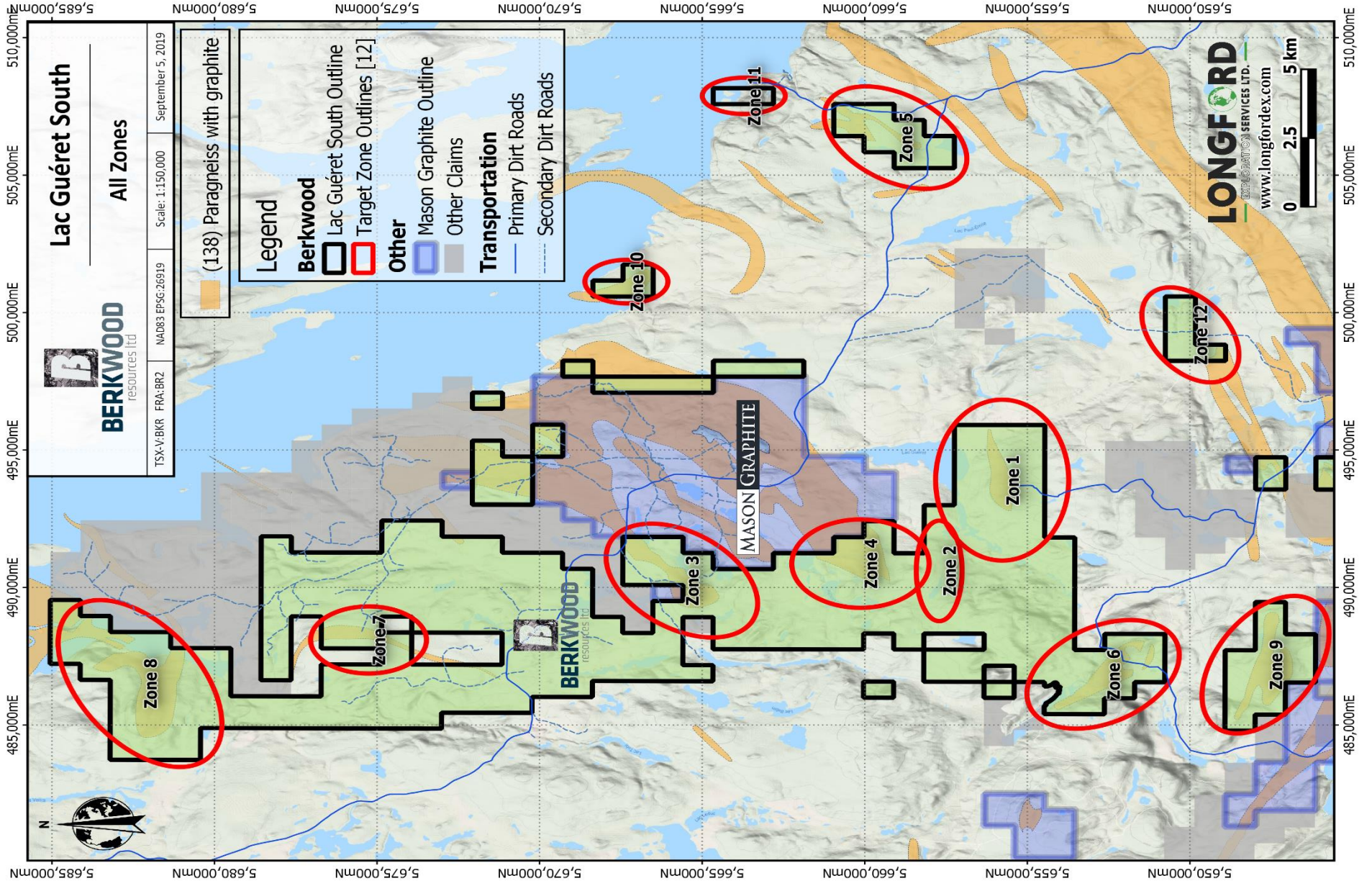
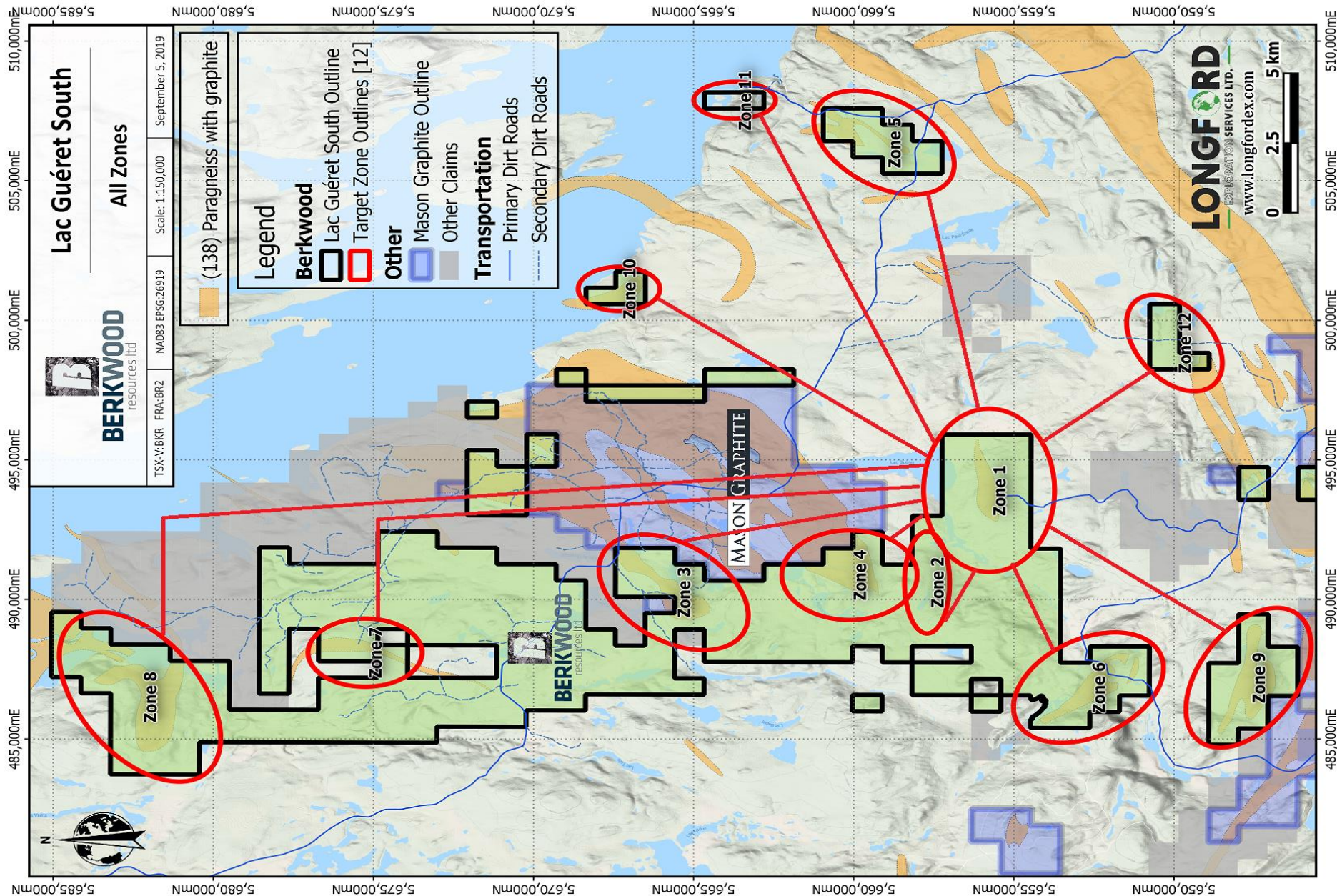


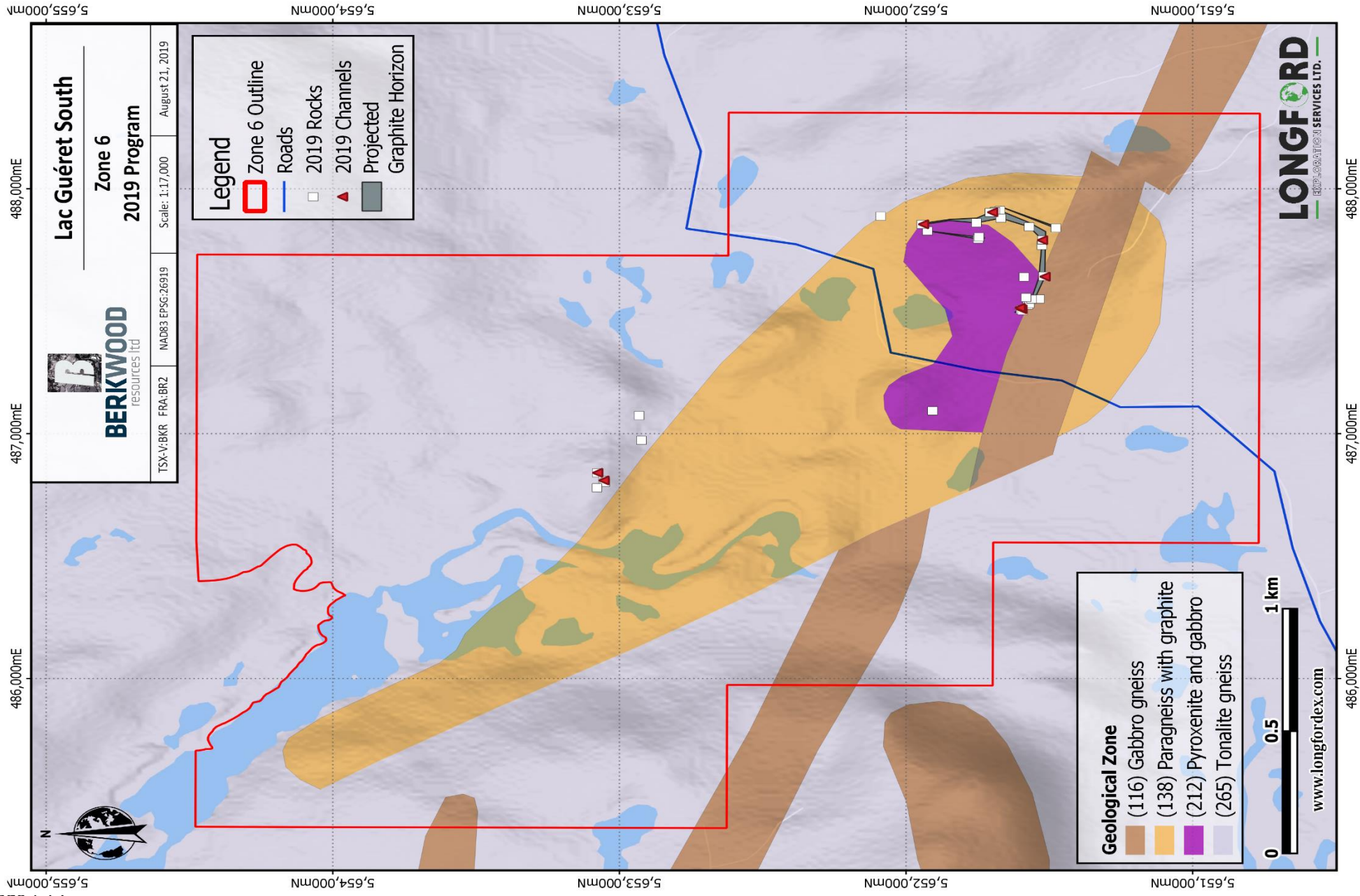
Figure 1: expanded graphite ("erabite worms") produced with Berkwod erabite

The main findings of ProGraphite are:

- **The material is easily purified to 99.95% by the standard alkaline process.**
- **The material is very suitable for the production of expandable graphite, having achieved densities of 380 and 390 ml per gram.**
- **Size distribution of the graphite in the concentrate shows a coarse flake size, above average.**
- **Graphitic carbon grade of the concentrates produced is high at 97% Cgr.**







Lac Guéret South
Zone 6
2019 Program

TSX-V: BKR FRA: BR2 NAD83 EPSG:26919 Scale: 1:17,000 August 21, 2019

Legend

- Zone 6 Outline
- Roads
- 2019 Rocks
- 2019 Channels
- Projected Graphite Horizon

Geological Zone

- (116) Gabbro gneiss
- (138) Paragneiss with graphite
- (212) Pyroxenite and gabbro
- (265) Tonalite gneiss



www.longfordex.com



486,000mE 487,000mE 488,000mE

5,651,000mN 5,652,000mN 5,653,000mN 5,654,000mN 5,655,000mN

486,000mE 487,000mE 488,000mE
5,655,000mN 5,654,000mN 5,653,000mN 5,652,000mN 5,651,000mN

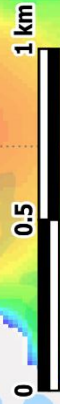
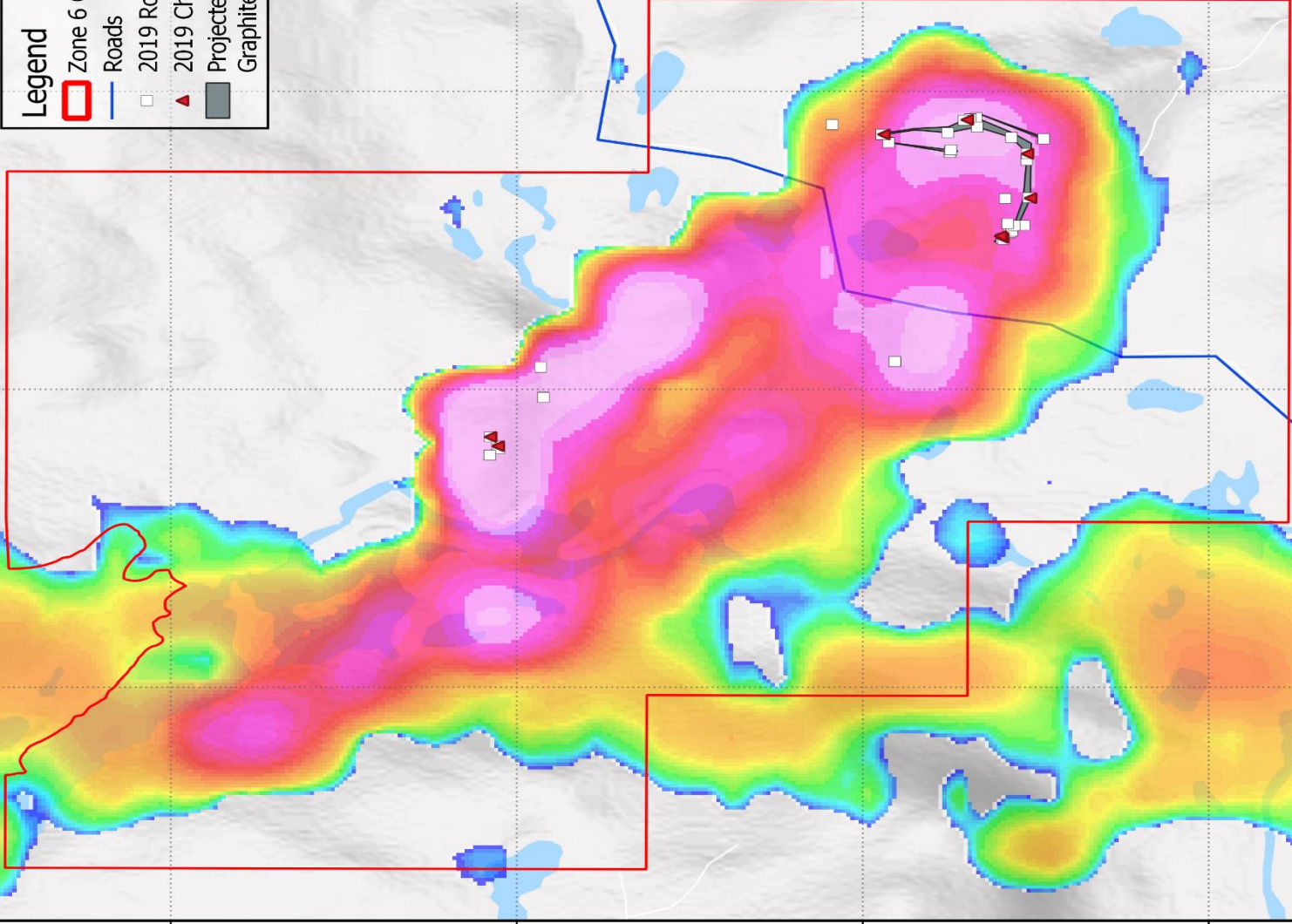


Lac Guéret South Zone 6 2019 Program

TSX-V:BKR FRA:BR2 NAD83 EPSG:26919 Scale: 1:17,000 August 21, 2019

Legend

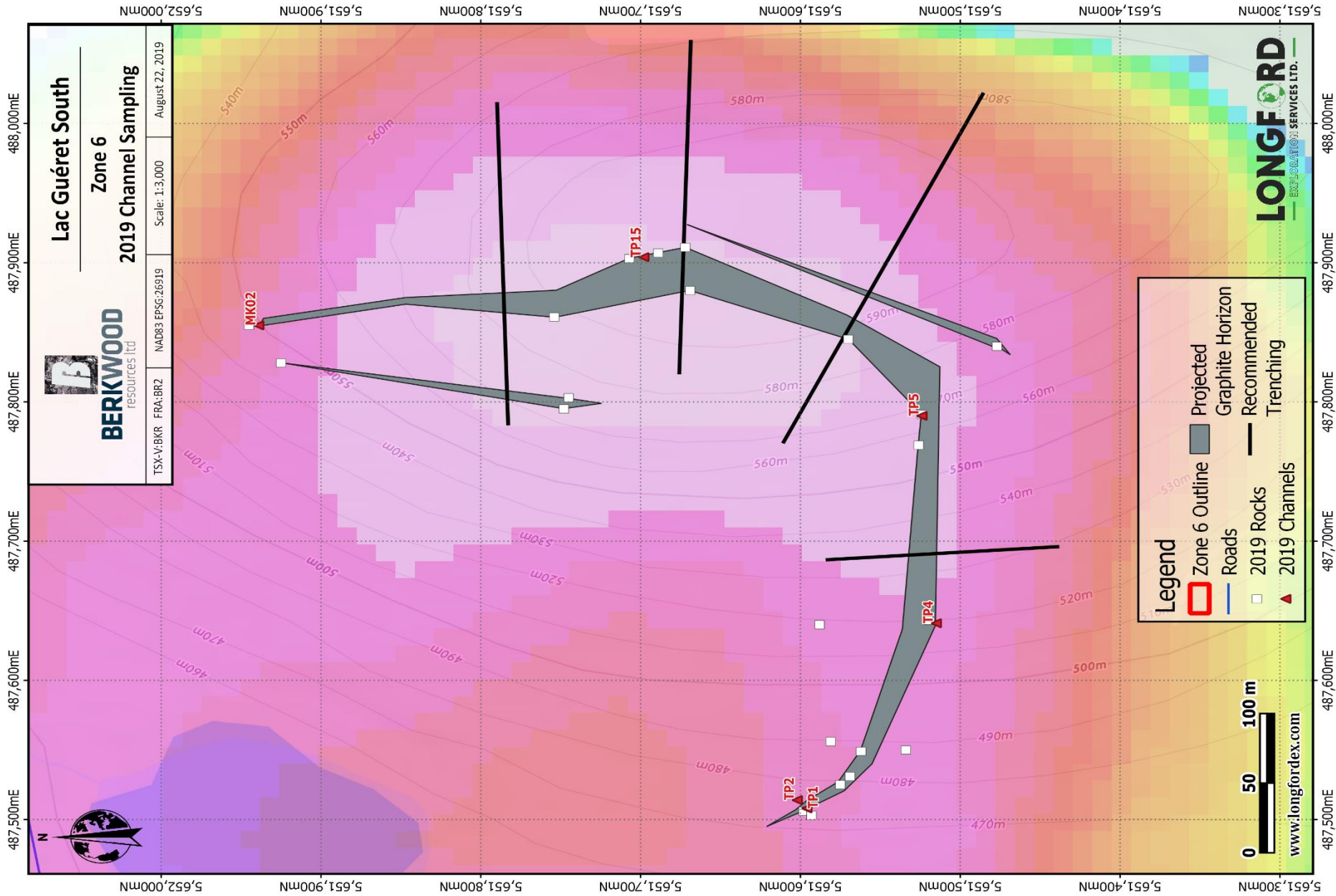
- Zone 6 Outline
- Roads
- 2019 Rocks
- 2019 Channels
- Projected
- Graphite Horizon

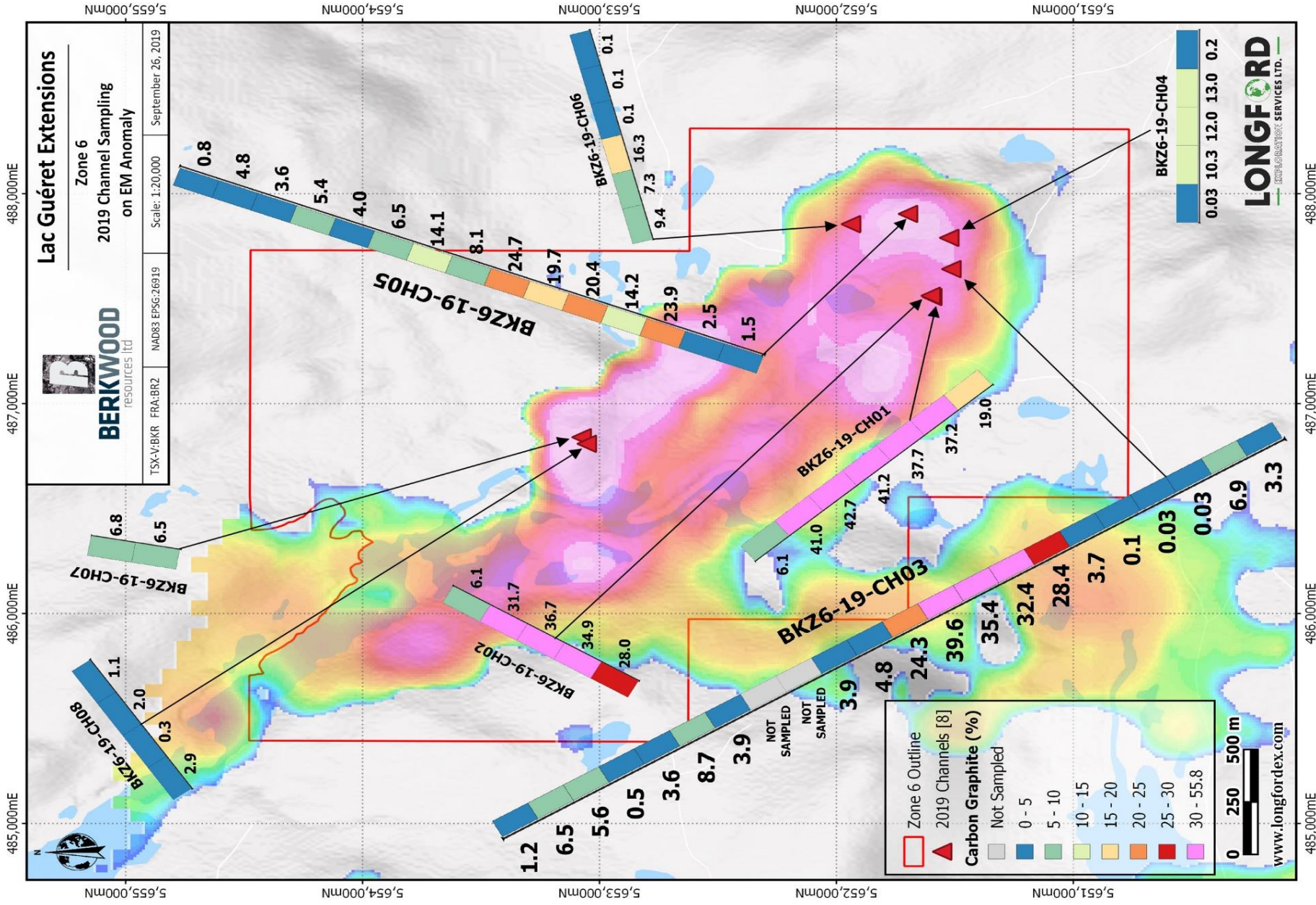


www.longfordex.com



486,000mE 487,000mE 488,000mE



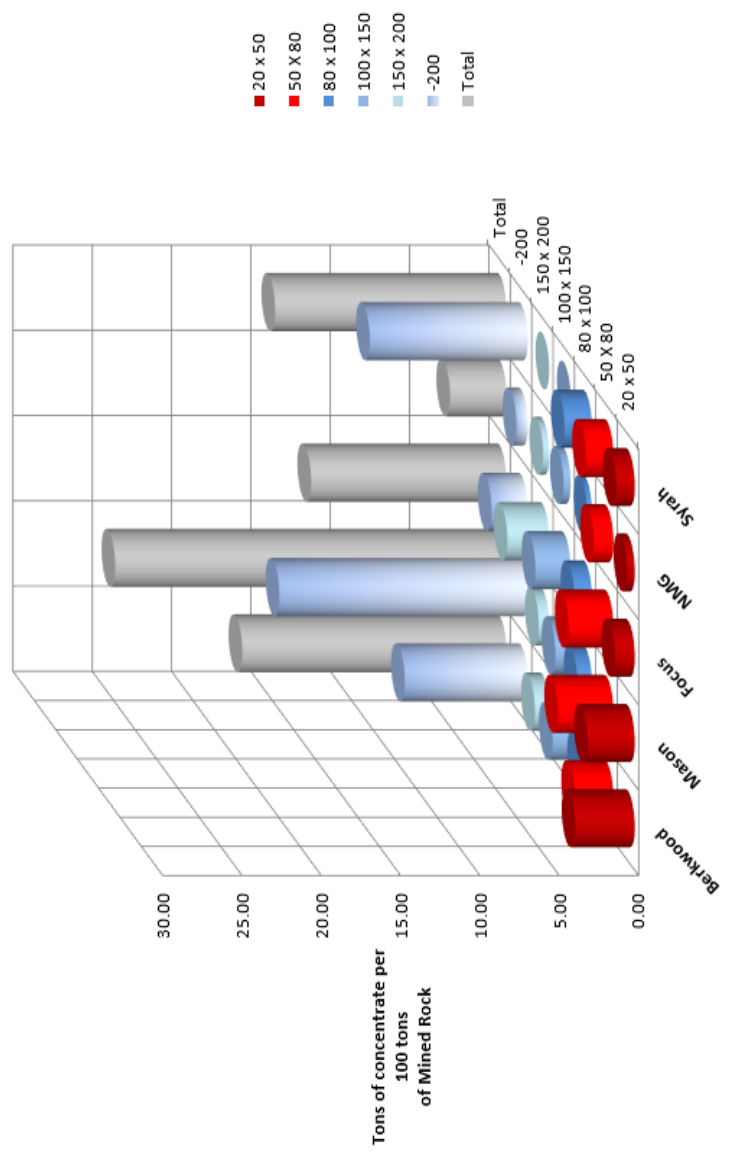




ESTIMATE OF PRODUCIBLE CONCENTRATES AT EACH PROJECT (TONS PER 100 TONS OF MINED ROCK)

Project	Berkwood	Mason	Focus	NMG	Syrah
Mined Grade	18.5	27.4	13.68	3.95	16.2
Recovery	90%	90%	90%	90%	90%
Recovered Grade	16.65	24.66	12.31	3.56	14.58
Standard Mesh					
20 x 50	3.74	2.97	1.23	0.48	1.15
50 X 80	2.42	3.49	2.83	1.23	1.73
80 x 100	0.71	0.92	1.11	0.30	1.73
100 x 150	1.13	0.96	2.22	0.45	?
150 x 200	0.91	0.66	2.64	0.38	?
Subtotal +200	8.90	9.00	10.03	2.84	9.96
-200	7.75	15.66	2.29	0.72	

Estimates of producible Concentrates





TSX-V: BKR
FSE: BK2N
WKN: A2DNV4

WWW.berkwoodresources.com

E-mail: info@berkwoodresources.com

PO Box 48362 BENTALL, **Vancouver** BC V7X 1A1

Phone: (604) 343-7740

2200 – 1250 Rene Levesque Blvd. **Montreal** QC H3B 4W8

Phone: (438) 469-0705