

CUTTING
TOOLS



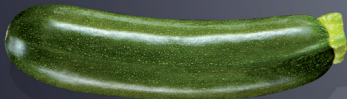
CHAPTER

03

SIA HUAT 
Beyond Foodservice Supplies

www.siahuat.com

HACCP SAFETY AND HYGIENE.



WHITE



YELLOW



RED



BLUE



GREEN



BROWN

PROFESSIONAL KNIVES SINCE 1776.

As one of the world's leading manufacturers of quality knives and accessories for professional use, GIESSER produces more than 8,000 knives daily at its plant in Winnenden, Germany. The broad product range includes 2,500 different forged and stamped knives, as well as accessories for the food service and food processing industries. GIESSER products feature outstanding materials and first-class workmanship. You'll find just the right tool for your demands.



GIESSER

MADE IN GERMANY

www.giesser.de



GIESSER Curved Paring Knife (Bird's Beak) with Plastic Handle

Product Code	Dimension*	Colour
03-001-00253	6cm	Blue
03-001-00255	6cm	Green
03-001-00256	6cm	Red
03-001-00257	6cm	White
03-001-00254	6cm	Yellow
03-001-00252	6cm	Black



GIESSER FORGED Curved Paring Knife (Bird's Beak) Forged Blade with PAG Handle

Product Code	Dimension*	Colour
03-001-00220	9cm	Black
03-001-00221	9cm	Green



GIESSER Paring Knife Forged Blade with Pom Handle

Product Code	Dimension*	Colour
03-001-00212	10cm	Black
03-001-00213	10cm	Blue
03-001-00214	10cm	Yellow
03-001-00215	10cm	Green
03-001-00216	10cm	Red
03-001-00217	12cm	Black



GIESSER BEST CUT Paring Knife Forged Blade with Plastic Handle

Product Code	Dimension*	Colour
03-001-00207	8cm	Black
03-001-00208	10cm	Black



GIESSER BEST CUT Paring Knife Wavy Edge with Plastic Handle

Product Code	Dimension*	Colour
03-001-00209	10cm	Black



GIESSER PRIME LINE Vegetable Knife with Plastic Handle

Product Code	Dimension*	Colour
03-001-00227	8cm	Black
03-001-00228	10cm	Black
03-001-00229	10cm	Green
03-001-00230	10cm	Red



GIESSER FORGED Vegetable Knife Forged Blade with Pom Handle

Product Code	Dimension*	Colour
03-001-00218	8cm	Black
03-001-00219	8cm	Green



GIESSER Vegetable Knife with Plastic Handle

Product Code	Dimension*	Colour
03-001-00231	8cm	Black
03-001-00232	8cm	Green
03-001-00233	8cm	Red
03-001-00234 (with Wavy Edge)	8cm	Black



GIESSER POM Vegetable Knife with Pom Handle

Product Code	Dimension*	Colour
03-001-00226	8.5cm	Black



GIESSER Vegetable Knife with Plastic Handle

Blade	Dimension*	Black	Blue	Brown	Yellow	Green	Violet	Red	White
Normal	8cm	03-001-00235	03-001-00236		03-001-00237	03-001-00238		03-001-00239	03-001-00240
	10cm	03-001-00241	03-001-00242	03-001-00243	03-001-00244	03-001-00245	03-001-00660	03-001-00246	03-001-00247
	12cm	03-001-00248							
Wavy Edge	8cm	03-001-00249							
	10cm	03-001-00250				03-001-00251			

*Dimension refer to the blade length only



GIESSER Universal Knife with Serrated Edge and Plastic Handle

Product Code	Dimension*	Colour
03-001-00395	11cm	Blue
03-001-00396	11cm	Yellow
03-001-00397	11cm	Green
03-001-00398	11cm	Red
03-001-00399	11cm	White
03-001-00400	11cm	Black



GIESSER Universal Knife with Serrated Edge with Wooden Handle

Product Code	Dimension*
03-001-00388	11cm



GIESSER PRIME LINE Universal Knife with Wavy Edge and Plastic Handle

Product Code	Dimension*	Colour
03-001-00390	11cm	Black
03-001-00389	25cm	Black



GIESSER Universal Knife with Plastic Handle

Product Code	Dimension*	Colour
03-001-00394	11cm	Black



GIESSER BEST CUT Universal Knife with Wavy Edge

Product Code	Dimension*	Colour
03-001-00652	25cm	Black



GIESSER Universal Knife with Plastic Handle

Product Code	Dimension*	Colour
03-001-00393 (with Wavy Edge)	25cm	White
03-001-00392 (with Wavy Edge)	25cm	Black
03-001-00391	25cm	Black



GIESSER Universal Knife with Wooden Handle

Product Code	Dimension*
03-001-00387	25cm



GIESSER Kitchen Knife Thin Blade with Plastic Handle

Product Code	Dimension*	Colour
03-001-00197	13cm	Black
03-001-00198	13cm	Yellow
03-001-00199	13cm	Green
03-001-00200	15cm	Black
03-001-00201	15cm	White



GIESSER PRIME LINE Kitchen Knife with Plastic Handle

Product Code	Dimension*	Colour
03-001-00173	13cm	Black



GIESSER PRIME LINE Chef's Knife Wide Blade with Plastic Handle

Product Code	Dimension*	Colour
03-001-00070	20cm	Black
03-001-00071	20cm	Green
03-001-00072	20cm	Red
03-001-00073	23cm	Black



GIESSER FORGED Chef's Knife Forged Wide Blade & Wavy Edge with Pom Handle

Product Code	Dimension*	Colour
03-001-00026	25cm	Black

BEST CUT

Extremely sharp knives with ergonomic handles and extraordinary cutting-edge retention.

PRIME LINE

Perfect for any work in the meat processing and catering industries.

*Dimension refer to the blade length only


GIESSER FORGED *Chef's Knife Forged Wide Blade with Pom Handle*

Dimension*	Black	Blue	Yellow	Green	Red
15cm	03-001-00008				
18cm	03-001-00009				
20cm	03-001-00010	03-001-00011	03-001-00012	03-001-00013	03-001-00014
23cm	03-001-00015	03-001-00016	03-001-00017	03-001-00018	03-001-00019
25cm	03-001-00020	03-001-00021	03-001-00022	03-001-00023	03-001-00024
30cm	03-001-00025				


GIESSER *Chef's Knife with Wide Blade*

Dimension*	20cm	26cm	31cm
Wooden Handle	03-001-00067	03-001-00068	03-001-00069
Pom Handle	03-001-00062	03-001-00063	03-001-00064


GIESSER *Chef's Knife with Wide Blade and Plastic Handle*

Dimension*	Black	Blue	Brown	Yellow	Green	Red	White	Violet
16cm	03-001-00078	03-001-00079	03-001-00080	03-001-00081	03-001-00082	03-001-00083	03-001-00084	
20cm	03-001-00085	03-001-00086	03-001-00087	03-001-00088	03-001-00089	03-001-00090	03-001-00091	03-001-00661
23cm	03-001-00092	03-001-00093	03-001-00094	03-001-00095	03-001-00096	03-001-00097	03-001-00098	
26cm	03-001-00099	03-001-00100	03-001-00101	03-001-00102	03-001-00103	03-001-00104	03-001-00105	03-001-00662
31cm	03-001-00106	03-001-00107	03-001-00108	03-001-00109	03-001-00110	03-001-00111	03-001-00112	
31cm (wavy edge)	03-001-00113	03-001-00114		03-001-00115	03-001-00116	03-001-00117	03-001-00118	


GIESSER BEST CUT *Chef's Knife with Black Plastic Handle*

Product Code	Dimension*	Blade
03-001-00001	20cm	Forged
03-001-00002	23cm	Forged
03-001-00003	25cm	Forged
03-001-00004	20cm	Wavy Edge
03-001-00005	25cm	Wavy Edge

GIESSER BEST CUT *Chef's Knife with Plastic Narrow Handle*

Product Code	Dimension*
03-001-00006	18cm
03-001-00007	20cm

GIESSER PRIME LINE *Cook's Knife Narrow with Plastic Handle*

Product Code	Dimension*
03-001-00074	16cm
03-001-00075	18cm

*Dimension refer to the blade length only



Narrow Forged Blade



Serrated Forged Blade

GIESSER FORGED *Cook's Knife with Pom Handle*

Blade	Dimension*	Black	Blue	Yellow	Green	Red
Narrow Forged Blade	15cm	03-001-00027				
	18cm	03-001-00028	03-001-00029	03-001-00030	03-001-00031	03-001-00032
	20cm	03-001-00033	03-001-00034	03-001-00035	03-001-00036	03-001-00037
	23cm	03-001-00038				
	25cm	03-001-00039	03-001-00040		03-001-00041	03-001-00042
Serrated Forged Blade	25cm	03-001-00043				

**GIESSER** *Cook's Knife with Narrow Blade and Plastic Handle*

Dimension*	Black	Blue	Green	Red	Brown	White	Violet
16cm	03-001-00119	03-001-00120	03-001-00121	03-001-00122	03-001-00664	03-001-00665	03-001-00663
18cm	03-001-00123	03-001-00124	03-001-00125	03-001-00126			
20cm	03-001-00127	03-001-00129	03-001-00129	03-001-00130			
23cm	03-001-00131						

**GIESSER** *Steak Knife with Narrow Blade and Plastic Handle*

Dimension*	Black	Blue	Yellow	Green	Red
21cm	03-001-00174	03-001-00175	03-001-00176		03-001-00177
24cm	03-001-00178	03-001-00179	03-001-00180	03-001-00181	03-001-00182
27cm	03-001-00183	03-001-00184	03-001-00185	03-001-00186	03-001-00187
30cm	03-001-00188	03-001-00189	03-001-00190	03-001-00191	03-001-00192

**GIESSER** *Steak Knife with Scalloped Blade*

Product Code	Dimension*
03-001-00668	11cm

**GIESSER** *Steak Knife with Scalloped Blade and Wavy Edge*

Product Code	Dimension*
03-001-00669	11cm Wavy Edge

**GIESSER** *Steak Knife with Scalloped Blade and Plastic Handle*

Product Code	Dimension*
03-001-00193	21cm
03-001-00194	24cm

*Dimension refer to the blade length only



Classic Blade



Wide Blade



Wide & Curved Blade

GIESSER Boning Knife with Plastic Handle

Blade	Dimension*	Black	Blue	Yellow	Green	Red	White
Classic Blade	13cm	03-001-00410	03-001-00411	03-001-00412	03-001-00413	03-001-00414	03-001-00415
	16cm	03-001-00416	03-001-00417	03-001-00418	03-001-00419	03-001-00420	03-001-00421
	18cm	03-001-00422					
	21cm	03-001-00423					
Wide Blade	14cm	03-001-00437	03-001-00438	03-001-00439	03-001-00440		
	16cm	03-001-00441	03-001-00442	03-001-00443	03-001-00444	03-001-00445	
	18cm	03-001-00446		03-001-00447	03-001-00655		
Wide & Curved Blade	15cm	03-001-00434	03-001-00435		03-001-00436		



GIESSER Boning Knife with Stiff Blade and Plastic Handle

Dimension*	Black	Green	Red	Yellow
13cm	03-001-00426	03-001-00428	03-001-00429	03-001-00427
15cm	03-001-00430	03-001-00431	03-001-00433	03-001-00432

GIESSER PRIME LINE Boning Knife with Stiff Blade and Plastic Handle

Product Code	Dimension*
03-001-00409	15cm



GIESSER Boning Knife with Pom Handle

Product Code	Dimension*
03-001-00408	13cm



GIESSER BEST CUT Boning Knife

Product Code	Dimension*
03-001-00653	15cm



GIESSER Boning Knife with Medium Blade and Plastic Handle

Product Code	Dimension*	Colour
03-001-00425	15cm	Red
03-001-00424	15cm	Yellow



Classic Blade



Pointed Tip



Prime Line

GIESSER Sticking Knife with Plastic Handle

Blade	Dimension*	Black	Blue	Yellow	Green	Red	White	
Classic Blade	13cm	03-001-00487	03-001-00488	03-001-00489	03-001-00490		03-001-00491	
	16cm	03-001-00492	03-001-00493	03-001-00494	03-001-00495	03-001-00496	03-001-00497	
	18cm	03-001-00498	03-001-00499	03-001-00500	03-001-00501	03-001-00502	03-001-00503	
	21cm	03-001-00504						
	24cm	03-001-00506			03-001-00510			
	30cm	03-001-00507						
Pointed Tip	22cm				03-001-00508	03-001-00509		
Prime Line	18cm	03-001-00486						

*Dimension refer to the blade length only



Classic Blade



Scalloped Blade

GIESSER Butcher Knife Narrow Shape with Plastic Handle

Blade	Dimension*	Black	Blue	Yellow	Green	Red	White
Classic Blade	18cm	03-001-00451	03-001-00452	03-001-00453	03-001-00454	03-001-00455	03-001-00456
	21cm	03-001-00457	03-001-00458	03-001-00459	03-001-00460	03-001-00461	03-001-00462
	24cm	03-001-00463	03-001-00468	03-001-00464	03-001-00465	03-001-00466	03-001-00467
	27cm	03-001-00469	03-001-00470	03-001-00471		03-001-00472	
	30cm	03-001-00473		03-001-00474			
	32cm	03-001-00475					
Scalloped Blade	21cm	03-001-00477					
	24cm	03-001-00478					



GIESSER Bone Splitter with Wide Heavy Forged Blade and Pom Handle

Product Code	Dimension*
03-001-00450	25cm



GIESSER Filleting Knife with Forged Blade and Pom Handle

Product Code	Dimension*	Colour
03-001-00513	18cm	Blue
03-001-00514	18cm	Green
03-001-00515	18cm	Red
03-001-00512	18cm	Black



GIESSER PRIME LINE Filleting Knife with Plastic Handle

Product Code	Dimension*
03-001-00517	16cm



GIESSER Filleting Knife with Narrow and Flexible Blade and Plastic Handle

Dimension*	Black	Blue	Red	Yellow
18cm	03-001-00518	03-001-00519	03-001-00521	03-001-00520
20cm	03-001-00522	03-001-00523	03-001-00525	03-001-00524
22cm	03-001-00526			03-001-00527



GIESSER BEST CUT Filleting Knife with Plastic Handle

Product Code	Dimension*
03-001-00511	18cm



GIESSER Salmon Knife with Plastic Handle

Product Code	Dimension*	Colour
03-001-00536 (scalloped blade)	31cm	Blue
03-001-00535 (scalloped blade)	31cm	Black
03-001-00534	31cm	Black



GIESSER Salmon Knife with Scalloped Blade and Pom Handle

Product Code	Dimension*
03-001-00532	31cm



GIESSER POM Salmon Slicer with Pom Handle

Product Code	Dimension*
03-001-00533	31cm

*Dimension refer to the blade length only



02-003-00701

03-003-00022



GIESSER Fish Fin Shears

Product Code	Dimension
03-002-00330	26cm

GIESSER Fish Pincer

Product Code	Dimension
02-003-00701	18cm
03-003-00022	13cm

GIESSER Fish Scaler

Product Code	Dimension
03-002-00334	28cm



GIESSER PRIME LINE Ham Slicer with Wavy Edge and Plastic Handle

Product Code	Dimension*
03-001-00300	25cm
03-001-00301	31cm

GIESSER Ham Knife with Wavy Edge and Plastic Handle

Product Code	Dimension*
03-001-00376	28cm

GIESSER Ham Knife with Plastic Handle

Product Code	Dimension*
03-001-00375	28cm



GIESSER Ham Knife

Product Code	Dimension*	Type
03-001-00295	25cm	Wooden Handle
03-001-00296	31cm	Wooden Handle
03-001-00291	25cm	Pom Handle
03-001-00292	20cm	Serrated Edge, Pom Handle

GIESSER Ham Slicer

Product Code	Dimension*	Type
03-001-00297	25cm	Wooden Handle
03-001-00298	31cm	Wooden Handle
03-001-00299	36cm	Wooden Handle
03-001-00293	28cm	Pom Handle
03-001-00294	28cm	Wavy Edge, Pom Hdle

GIESSER Salami Slicer with Plastic Handle

Product Code	Dimension*	Colour
03-001-00402	28cm	Yellow
03-001-00403	30cm	Black
03-001-00404	28cm	Yellow
03-001-00405 (Wavy Edge)	28cm	Black



Serrated Edge & Pointed Tip



Pointed Tip

GIESSER Ham Knife with Plastic Handle

Blade	Dimension*	Black	Blue	Yellow	Red
Serrated Edge & Pointed Tip	21cm	03-001-00317			
	25cm	03-001-00318		03-001-00319	
	28cm	03-001-00320		03-001-00321	
	31cm	03-001-00322		03-001-00323	
Pointed Tip	21cm	03-001-00302	03-001-00303	03-001-00304	03-001-00305
	25cm	03-001-00306	03-001-00307	03-001-00308	03-001-00309
	28cm	03-001-00310	03-001-00311	03-001-00312	03-001-00313
	31cm	03-001-00314		03-001-00315	03-001-00316

*Dimension refer to the blade length only



Classic Blade



Partly Serrated Edge



Serrated Edge

GIESSER Ham Slicer with Plastic Handle

Blade	Dimension*	Black	Blue	Brown	Yellow	Green	Red	White	Violet
Classic Blade	25cm	03-001-00324	03-001-00325		03-001-00326	03-001-00327	03-001-00328		
	28cm	03-001-00329	03-001-00330		03-001-00331	03-001-00332	03-001-00333	03-001-00334	
	31cm	03-001-00335	03-001-00336		03-001-00337	03-001-00338	03-001-00339	03-001-00340	
	36cm	03-001-00341							
Partly Serrated Edge	25cm	03-001-00342	03-001-00343		03-001-00344		03-001-00345		
	28cm	03-001-00346	03-001-00347		03-001-00348		03-001-00349		
	31cm	03-001-00350	03-001-00351		03-001-00352		03-001-00287	03-001-00288	
Serrated Edge	25cm	03-001-00353	03-001-00354	03-001-00355	03-001-00356	03-001-00284	03-001-00357	03-001-00285	
	28cm	03-001-00358	03-001-00359		03-001-00360	03-001-00361	03-001-00362	03-001-00363	
	31cm	03-001-00364	03-001-00365	03-001-00366	03-001-00367	03-001-00368	03-001-00369	03-001-00289	03-001-00656
	36cm	03-001-00370							

**GIESSER Ham Slicer with Scalloped Blade**

Product Code	Dimension*
03-001-00371	25cm
03-001-00372	28cm
03-001-00373	31cm
03-001-00374	36cm

**GIESSER Carving Slicer with Plastic Handle**

Product Code	Dimension*	Colour
03-001-00670	21cm	Black
03-001-00672	21cm	Yellow
03-001-00673	21cm	Blue
03-001-00671	25cm	Black

**GIESSER BEST CUT Ham Slicer with Forged Blade and Plastic Handle**

Product Code	Dimension*
03-001-00279	15cm
03-001-00280	20cm
03-001-00281	25cm



Classic Blade



Serrated Edge



Wavy Edge

GIESSER Bread Knife with Plastic Handle

Blade	Dimension*	Black	Blue	Yellow	Red	White
Classic Blade	18cm	03-001-00549				
	21cm	03-001-00550				
	24cm	03-001-00551				
Serrated Edge	18cm	03-001-00552				
	21cm	03-001-00553	03-001-00554	03-001-00555	03-001-00556	03-001-00557
	24cm	03-001-00558				
Wavy Edge	24cm					03-001-00559

**GIESSER Bread Knife with Pom Handle**

Product Code	Dimension*	
03-001-00545	18cm	
03-001-00546	21cm	
03-001-00547	24cm	
03-001-00542	18cm	Wavy Edge
03-001-00543	21cm	Wavy Edge
03-001-00544	24cm	Wavy Edge

**GIESSER Bread Knife with Distance Device Wavy Edge**

Product Code	Dimension*
03-001-00658	21cm
03-001-00659	25cm

**GIESSER PRIME LINE Bread Knife with Wavy Edge and Plastic Handle**

Product Code	Dimension*
03-001-00548	21cm

*Dimension refer to the blade length only



GIESSER Bread Knife with Serrated Edge and PAG Handle

Product Code	Dimension*
03-001-00537	20cm



GIESSER Bread Knife with Serrated Edge and Plastic Handle

Product Code	Dimension*	Colour
03-001-00657	21cm	Violet



GIESSER Offset Bread Knife with Wavy Edge and Plastic Handle

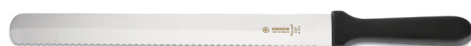
Product Code	Dimension*
03-001-00560	18cm



Wavy Edge



Serrated Edge



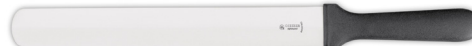
Plain & Wavy Edge



Double Edge



Wavy & Serrated Edge



Plain & Serrated Edge

GIESSER Baker's Knife with Plastic Handle

Dimension*	Wavy Edge	Serrated Edge	Double Edge	Plain & Wavy Edge	Wavy & Serrated Edge	Plain & Serrated Edge
26cm			03-001-00569	03-001-00572	03-001-00578	03-001-00575
30cm	03-001-00567	03-001-00568	03-001-00570	03-001-00573	03-001-00579	03-001-00577
36cm			03-001-00571	03-001-00574	03-001-00580	03-001-00576



GIESSER Baker's Knife with Single Edge & Plastic Handle

Product Code	Dimension*	Colour
03-001-00565	30cm	Black
03-001-00566	30cm	White



GIESSER Cheese Knife with Plastic Handle

Product Code	Dimension*
03-001-00606	15cm



GIESSER Cheese Knife with Scalloped Blade and 2 Plastic Handles

Product Code	Dimension*
03-001-00597	26cm
03-001-00598	30cm



GIESSER Parmesan Knife with Nylon Handle

Product Code	Dimension*
03-001-00605	11cm



GIESSER Soft Cheese Knife with Plastic Handle

Product Code	Dimension*
03-001-00594	15cm



GIESSER Cheese Shovel with Plastic Handle

Product Code	Dimension*
03-001-00599	15cm

*Dimension refer to the blade length only



GIESSER *Parmesan Knife with Nylon Handle*

Product Code	Dimension
03-001-00602	23cm
03-001-00603	23cm; Wire for Cheese Cutter. Set of 5pcs.



GIESSER *Cheese Wire*

Product Code	Dimension
03-001-00604	65cm



GIESSER *Stainless Steel Bone Saw with Plastic Handle*

Product Code	Dimension
03-001-00621	50cm
03-001-00622	50cm; Accessory Saw Blade for S/S Bone Saw



GIESSER *Bone / Dust Remover*

Product Code	Dimension
03-001-00205	20cm



GIESSER *Tomato Peeler*

Product Code	Dimension
03-002-00199	19cm



GIESSER *Grapefruit Knife with Plastic Handle*

Product Code	Dimension*
03-002-00201	6cm

**You can find all the high quality
knives and tools you need from
Atlantic Chef.**



**Atlantic[®]
Chef**



www.atlanticchef.com

SANTOPRENE® RANGE

Santoprene® is a registered trademark of Advanced Elastomer, L.P. The Atlantic Chef made handles of Santoprene® offer nonslip ergonomic grip, maximum control and unsurpassed degree of comfort.

POM RANGE

Atlantic Chef POM Handles are over moulded for tough use and hygienic purpose (by Derlin® at DuPont®) feature high stiffness and high heat deflection temperature to ensure the quality of food process.

SANTOPRENE® & POLYPROPYLENE RANGE

The Atlantic Chef made revolutionary handles with the combination of Santoprene® and polypropylene that offer a non-slip comfortable grip and tough use.



Pom



Santoprene

ATLANTIC CHEF Forged Curved Paring Knife

Handle	Product Code	Dimension*
Pom	03-001-00223	8cm
Santoprene	03-001-00225	8cm



Pom



Santoprene

ATLANTIC CHEF Forged Paring Knife

Handle	Product Code	Dimension*
Pom	03-001-00222	8cm
Santoprene	03-001-00224	8cm



ATLANTIC CHEF Paring Knife with Serrated Edge

Handle	Product Code	Dimension*
Santoprene & Pom	03-001-00265	8cm



ATLANTIC CHEF Tomato Knife

Handle	Product Code	Dimension*
Pom	03-003-00023	14cm



Pom



Santoprene



Santoprene & Pom

ATLANTIC CHEF Forged Utility / Kitchen Knife

Handle	Product Code	Dimension*
Pom	03-001-00171	14cm
Santoprene	03-001-00172	13cm
Santoprene & Pom	03-001-00202	15cm



Pom



Santoprene

ATLANTIC CHEF Forged Chef Knife

Handle	Product Code	Dimension*
Pom	03-001-00044	15cm
	03-001-00045	21cm
	03-001-00046	23cm
	03-001-00047	25cm
Santoprene	03-001-00048	15cm
	03-001-00049	21cm
	03-001-00050	23cm
	03-001-00051	25cm

*Dimension refer to the blade length only



ATLANTIC CHEF Chef Knife with Plastic Handle

Blade	Dimension*	Black	Blue	Brown	Yellow	Green	Red	White
Santoprene & Pom	15cm	03-001-00132	03-001-00133	03-001-00134	03-001-00138	03-001-00135	03-001-00136	03-001-00137
	21cm	03-001-00139	03-001-00140		03-001-00143	03-001-00141	03-001-00142	03-001-00675
	23cm	03-001-00149	03-001-00150	03-001-00151	03-001-00155	03-001-00152	03-001-00153	03-001-00154
	25cm	03-001-00156	03-001-00157		03-001-00160	03-001-00158	03-001-00159	03-001-00666
	30cm	03-001-00161	03-001-00162		03-001-00165	03-001-00163	03-001-00164	03-001-00667



ATLANTIC CHEF PREMIUM Forged Boning Knife

Handle	Product Code	Dimension*
Pom	03-001-00407	15cm



ATLANTIC CHEF Curved Boning Knife

Handle	Product Code	Dimension*
Santoprene & Pom	03-001-00449	15cm



ATLANTIC CHEF Stiff Boning Knife

Handle	Product Code	Dimension*	Colour
Santoprene & Pom	03-001-00448	15cm	Black
	03-001-00680	15cm	Red



ATLANTIC CHEF Forged Fillet Knife

Handle	Product Code	Dimension*
Pom	03-001-00516	18cm



ATLANTIC CHEF Flexible Fillet Knife with Plastic Handle

Handle	Product Code	Dimension*
Santoprene & Pom	03-001-00530	18cm
	03-001-00531	21cm



ATLANTIC CHEF Ham Slicer (Plain Edge and without Kullen)

Handle	Product Code	Dimension*
Pom	03-001-00679	28cm



ATLANTIC CHEF Serrated Ham Slicer with Plastic Handle

Handle	Product Code	Dimension*	Colour
Santoprene & Pom	03-001-00378	28cm	Black
	03-001-00379	28cm	White
	03-001-00380	36cm	Black



ATLANTIC CHEF Scalloped Ham Slicer with Plastic Handle

Handle	Product Code	Dimension*
Santoprene & Pom	03-001-00377	28cm

*Dimension refer to the blade length only



ATLANTIC CHEF Slicing Knife with Serrated Edge

Handle	Product Code	Dimension*
Santoprene & Pom	03-001-00381	30cm



Pom



Santoprene



Pom



Santoprene

ATLANTIC CHEF Forged Carving Knife

Handle	Product Code	Dimension*
Pom	03-001-00677	21cm
	03-001-00678	25cm
Santoprene	03-001-00675	21cm
	03-001-00676	25cm



ATLANTIC CHEF Forged Bread Knife

Handle	Product Code	Dimension*	
Pom	03-001-00538	21cm	Serrated
	03-001-00539	23cm	Serrated
Santoprene	03-001-00541	25cm	

ATLANTIC CHEF Serrated Bread Knife with Plastic Handle

Handle	Product Code	Dimension*	Colour
Santoprene & Pom	03-001-00561	21cm	Black
	03-001-00562	21cm	White
	03-001-00563	25cm	Black



ATLANTIC CHEF Offset Bread Knife

Handle	Product Code	Dimension*
Pom	03-001-00564	21cm



Pom



Santoprene



Santoprene & Pom



ATLANTIC CHEF Forged Usaba Knife

Handle	Product Code	Dimension*
Santoprene	03-002-00007	18cm

ATLANTIC CHEF Forged Santoku Knife

Handle	Product Code	Dimension*
Pom	03-002-00001	18cm
Santoprene	03-002-00004	18cm
Santoprene & Pom	03-002-00706	18cm



ATLANTIC CHEF Usaba Knife with Plastic Handle

Handle	Product Code	Dimension*
Santoprene & Pom	03-002-00009	18cm

*Dimension refer to the blade length only



GIESSER Cleaver with Plastic Handle

Product Code	Dimension*	Weight
03-001-00651	15 x 29cm	400g
03-001-00610	18 x 38cm	550g
03-001-00611	20 x 31cm	650g



GIESSER Cleaver with Pom Handle

Product Code	Dimension*	Weight
03-001-00650	15x29cm	500g



ATLANTIC CHEF Stainless Steel Bone Knife with Plastic Handle

Product Code	Dimension*	Colour
03-002-00036	22 x 10.3cm	Yellow
03-002-00037	22 x 10.3cm	Red
03-002-00038	22 x 10.3cm	Black



ATLANTIC CHEF Stainless Steel Dim Sum Knife with Plastic Handle

Product Code	Dimension*
03-002-00154	20 x 8.5cm



ATLANTIC CHEF Stainless Steel Kow Kong Knife with Plastic Handle

Product Code	Dimension*	Colour
03-002-00103	18 x 11.5cm	Black
03-002-00104	18 x 11.5cm	Brown
03-002-00105	18 x 11.5cm	Red
03-002-00106	18 x 11.5cm	Yellow



ATLANTIC CHEF Stainless Steel Mun Mo Knife with Plastic Handle

Product Code	Dimension*
03-002-00068	22 x 10.7cm



ATLANTIC CHEF Stainless Steel Mun Mo / Kitchen Knife with Plastic Handle

Dimension*	Black	Blue	Red	Yellow
20 x 8.5cm	03-002-00064	03-002-00065	03-002-00066	03-002-00067
21.5 x 11.4cm	03-002-00060	03-002-00061	03-002-00062	03-002-00063



ATLANTIC CHEF Stainless Steel Shanghai Slicing Knife

Product Code	Dimension*
03-002-00133	22 x 10.7cm



ATLANTIC CHEF Stainless Steel Slicing Knife with Plastic Handle

Dimension*	Black	Blue	Green	Red	Yellow
20 x 8.5cm	03-002-00117	03-002-00118	03-002-00119	03-002-00120	03-002-00121
21.5 x 11.4cm	03-002-00116				



CCK Iron Bone Knife with Wooden Handle

Product Code	Dimension*
03-002-00028	Blade 23.5cm Size 1
03-002-00029	Blade 22.5cm Size 2



CCK Stainless Steel Bone Knife with Wooden Handle

Product Code	Dimension*
03-002-00030	Blade 22.5cm Size 2



CCK Stainless Steel Bone Knife with Stainless Steel Handle

Product Code	Dimension*	Size
03-002-00031	Blade 23.5cm	Size 1
03-002-00032	Blade 22.5cm	Size 2

*Dimension refer to the blade length only



CCK Stainless Steel Bone Knife with Plastic Handle

Product Code	Dimension*	Colour
03-002-00033	Blade 23.5cm Size 1	Black
03-002-00034	Blade 22.5cm Size 2	Black
03-002-00035	Blade 32.5cm Size 3	Red



CCK Stainless Steel Small Bone Chopper with Wooden Handle

Product Code	Dimension*	Size
03-002-00039	Blade 20cm	Size 1
03-002-00040	Blade 18.5cm	Size 2
03-002-00041	Blade 17cm	Size 3



CCK Stainless Steel Small Bone Chopper with Stainless Steel Handle

Product Code	Dimension*	Size
03-002-00042	Blade 20cm	Size 1
03-002-00043	Blade 18.5cm	Size 2
03-002-00044	Blade 17cm	Size 3



CCK Stainless Steel Bone Chopper with Plastic Handle

Product Code	Dimension*	Colour
03-002-00045	Blade 20cm Size 1	Black
03-002-00046	Blade 19cm Size 2	Black
03-002-00047	Blade 17cm Size 3	Black



CCK Iron Mun Mo (Wen Wu) Knife with Wooden Handle

Product Code	Dimension*	Size
03-002-00048	Blade 24cm	Size 1
03-002-00049	Blade 23cm	Size 2
03-002-00050(XX)	Size 3	Size 3



CCK Stainless Steel Mun Mo (Wen Wu) Knife with Wooden Handle

Product Code	Dimension*	Size
03-002-00051	Blade 23cm	Size 2
03-002-00052	Blade 22cm	Size 3



CCK Stainless Steel Mun Mo (Wen Wu) Knife with Plastic Handle

Dimension*	Size	Black	Blue	Green	Red	Yellow	White
Blade 23cm	Size 2	03-002-00054	03-002-00053	03-002-00055	03-002-00056	03-002-00058	03-002-00057



CCK Stainless Steel Siew Lap Knife with Wooden Handle

Product Code	Dimension*	Size
03-002-00069	Blade 24cm	Size 2
03-002-00070	Blade 23.5cm	Size 3



CCK Stainless Steel Siew Lap Knife with Plastic Handle

Product Code	Dimension*	Colour
03-002-00071	Blade 24cm Size 2	Black



CCK Iron Kow Kong Knife with Wooden Handle

Product Code	Dimension*	Size
03-002-00072	Blade 20cm	Size XL
03-002-00073	Blade 18.5cm	Size 1
03-002-00074	Blade 17.5cm	Size 2



Iron Kow Kong Knife with Wooden Handle

Product Code	Dimension*	Size
03-002-00109	Blade 18.7cm	Size 1
03-002-00110	Blade 17.6cm	Size 3



CCK Stainless Steel Kow Kong Knife with Wooden Handle

Product Code	Dimension*	Size
03-002-00077	Blade 20cm	Size XL
03-002-00078	Blade 18.5cm	Size 1
03-002-00079	Blade 17.5cm	Size 2



Stainless Steel Kow Kong Knife with Wooden Handle

Product Code	Dimension*	Size
03-002-00111	Blade 18.9cm	Size 1
03-002-00112	Blade 17.6cm	Size 2
03-002-00113	Blade 17cm	Size 3

*Dimension refer to the blade length only


CCK Stainless Steel Kow Kong Knife with Plastic Handle

Dimension*	Size	Black	Blue	Green	Red	Yellow	White
Blade 20cm	Size XL	03-002-00089	03-002-00088		03-002-00090		03-002-00091
Blade 18.5cm	Size 1	03-002-00093	03-002-00092	03-002-00094	03-002-00095		03-002-00096
Blade 17.5cm	Size 2	03-002-00098	03-002-00097	03-002-00099	03-002-00100	03-002-00102	03-002-0101


CCK Stainless Steel Kow Kong Knife with Stainless Steel Handle

Product Code	Dimension*	Size
03-002-00083	Blade 20cm	Size XL
03-002-00084	Blade 18.5cm	Size 1
03-002-00085	Blade 17.5cm	Size 2


Stainless Steel Kow Kong Knife with Stainless Steel Handle

Product Code	Dimension*	Size
03-002-00086	Blade 18.9cm	Size 1
03-002-00087	Blade 17.6cm	Size 2


CCK Iron Slicing Knife with Wooden Handle

Product Code	Dimension*	Size
03-002-00162	Blade 21.5cm	Size 2


CCK Stainless Steel Slicing Knife with Plastic Handle

Product Code	Dimension*	Colour
03-002-00114	Blade 23.7cm Size 2	White
03-002-00115	Blade 23cm Size 3	Green


CCK Stainless Steel Slicing Knife with Wooden Handle

Product Code	Dimension*	Size
03-002-00163	Blade 21.5cm	Size 2
03-002-00164	Blade 22.5cm	Size 3


SHI BA ZI Stainless Steel Cleaver

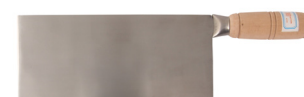
Product Code	Dimension*
03-002-00122	Blade 19.5cm
03-002-00123	Blade 18.5cm


CCK Stainless Steel Small Slicing Knife with Wooden Handle

Product Code	Dimension*	Size
03-002-00165	Blade 20.5cm	Size 1
03-002-00166	Blade 20cm	Size 2


CCK Stainless Steel Slicing Knife with Stainless Steel Handle

Product Code	Dimension*	Size
03-002-00167	Blade 21cm	Size XL
03-002-00168	Blade 20.1cm	Size 1
03-002-00169	Blade 20cm	Size 2


Stainless Steel Small Slicing Knife with Wooden Handle

Product Code	Dimension*	Size
03-002-00131	Blade 20.8cm	Size 2
03-002-00132	Blade 20.5cm	Size 3


CCK Stainless Steel Small Slicing Knife with Plastic Handle

Dimension*	Size	Black	Blue	Green	Red	Brown	White	Yellow
Blade 20cm	Size 2	03-002-00125	03-002-00124	03-002-00127	03-002-00128	03-002-00126	03-002-00129	03-002-00130

*Dimension refer to the blade length only



CCK Stainless Steel Vegetable Knife with Wooden Handle

Product Code	Dimension*	Size
03-002-00170	Blade 21cm	Size 1
03-002-00171	Blade 20.5cm	Size 2



CCK Stainless Steel Vegetable Knife with Stainless Steel Handle

Product Code	Dimension*	Size
03-002-00172	Blade 21cm	Size 1
03-002-00173	Blade 20.5cm	Size 2
03-002-00174	Blade 20cm	Size 3



Stainless Steel Vegetable Knife with Stainless Steel Handle

Product Code	Dimension*	Size
03-002-00138	Blade 19.8cm	Size 2
03-002-00139	Blade 19cm	Size 3



CCK Stainless Steel Vegetable Knife with Plastic Handle

Dimension*	Size	Black	Green	Red	White
Blade 21cm	Size 2	03-002-00134	03-002-00135	03-002-00136	03-002-00137



HAKKOH Stainless Steel Vegetable Chopper

Product Code	Dimension*
03-002-00141	L19.8cm
03-002-00140	L21.5cm



CCK Stainless Steel Duck Slicing Knife with Stainless Steel Handle

Product Code	Dimension*
03-002-00142	Blade 17cm
03-002-00143	Blade 21cm



CCK Stainless Steel Duck Slicing Knife with Stainless Steel Handle

Dimension*	Black	Green
Blade 17.7cm	03-002-00144	03-002-00145
Blade 20.3cm	03-002-00146	03-002-00147



CCK Stainless Steel Duck Slicing Knife with Wooden Handle

Product Code	Dimension*
03-002-00149	Blade 17cm
03-002-00150	Blade 21cm



CCK Stainless Steel Har-Kow / Dim Sum Skin Knife with Wooden Handle

Product Code	Dimension*
03-002-00151	Blade 19.5cm Size 1



CCK Stainless Steel Har-Kow / Dim Sum Skin Knife with Plastic Handle

Product Code	Dimension*	Colour
03-002-00152	Blade 20cm Size 1	Brown



Stainless Steel Har-Kow / Dim Sum Skin Knife with Wooden Handle

Product Code	Dimension*	Size
03-002-00153	Blade 20cm	Size 1



CCK Iron Fish Chopper with Metal Handle

Product Code	Dimension*
03-002-00155	Blade 17cm Size 1



CCK Stainless Steel Fish Chopper with Stainless Steel Handle (1KT + 13 Tales)

Product Code	Dimension*
03-002-00156	Blade 29.5cm Size 1



CCK Iron Song Knife

Product Code	Dimension*
03-002-00159	Blade 20cm Size 3
03-002-00158	Blade 21cm Size 2
03-002-00157	Blade 23.5cm Size 1

*Dimension refer to the blade length only



CCK Iron Mao Knife with Wooden Handle

Product Code	Dimension*
03-002-00160	Blade 18.5cm Size 1



SHI BA ZI Stainless Steel Cleaver Knife

Product Code	Dimension*
03-002-00176	Blade 18 x 9cm



GIESSER Watermelon Knife with 2 Handles

Product Code	Dimension*	Colour
03-002-00219	35cm	 Green



SHI BA ZI Stainless Steel Paring Knife

Product Code	Dimension*
03-001-00623	Blade 10cm



SHI BA ZI Stainless Steel Cleaver Knife

Product Code	Dimension	Size
03-002-00177	34 x 10cm	Size 1
03-002-00178	33 x 9.2cm	Size 2



SHI BA ZI Stainless Steel Slicer Knife

Product Code	Dimension	Size
03-002-00179	31.1 x 9cm	Size 3
03-002-00180	31 x 8cm	Size 4



GLOBAL Meat Chopper 440GR

Product Code	Dimension*
03-002-00699	16cm



GLOBAL Vegetable Knife

Product Code	Dimension*
03-001-00636	18cm
03-001-00646	14cm



GLOBAL Cook Knife

Product Code	Dimension*
03-001-00645	13cm
03-001-00633	20cm



GLOBAL Oriental Cook Knife

Product Code	Dimension*
03-001-00635	18cm



GLOBAL Kitchen Knife

Product Code	Dimension*
03-001-00644	16cm
03-001-00643	20cm



GLOBAL Utility Flexible Knife

Product Code	Dimension*
03-001-00647	15cm



GLOBAL Swedish Fillet Flexible

Product Code	Dimension*
03-001-00642	21cm



GLOBAL Meat / Fish Knife

Product Code	Dimension*
03-001-00641	18cm



GLOBAL Carving Knife

Product Code	Dimension*
03-001-00634	21cm

*Dimension refer to the blade length only

**GLOBAL Slicer**

Product Code	Dimension*
03-001-00637	18cm
03-001-00632	21cm

**GLOBAL Bread Knife**

Product Code	Dimension*
03-001-00640	22cm

**GLOBAL Yanagi Sashimi**

Product Code	Dimension*
03-002-00700	30cm

**GLOBAL Tako Sashimi**

Product Code	Dimension*
03-002-00701	30cm

**GLOBAL Santoku Knife**

Product Code	Dimension*
03-002-00702	18cm

**KIWI Stainless Steel Vegetable Knife**

Product Code	Dimension*
03-001-00270	4"
03-001-00271	5"
03-001-00272	6"

**HAKKOH Stainless Steel Vegetable Knife**

Product Code	Dimension*
03-001-00273	5"
03-001-00274	6"
03-001-00275	7"
03-001-00276	8"

**ATLANTIC CHEF Jap Garnishing Knife with Pom Handle**

Product Code	Dimension*
03-002-00025	9cm
03-002-00026	10cm
03-002-00027	12cm

**ATLANTIC CHEF Sashimi Knife with Wooden Handle**

Product Code	Dimension*
03-002-00012	24cm
03-002-00013	27cm
03-002-00014	30cm

**ATLANTIC CHEF Deba Knife with Wooden Handle**

Product Code	Dimension*
03-002-00020	10cm
03-002-00021	15cm

**GIESSER PRIME LINE Chef Santoku Knife with Antimicrobial Handle and Perforated Blade**

Product Code	Dimension*
03-001-00076	19cm

**GIESSER PRIME LINE Chef Santoku Knife with Antimicrobial Handle and Scalloped Blade**

Product Code	Dimension*
03-001-00077	18cm

**Teppanyaki Knife and Fork Set (2pcs/set)**

Product Code	Dimension*
03-002-00181	34.3 x 2.2cm 30 x 2.5cm

**GLOBAL Bent Carving Fork**

Product Code	Dimension*
14-001-00015	

**GIESSER Meat Fork with Curved Tines and Pom Handle**

Product Code	Dimension*
03-002-00707	15cm
03-002-00708	20cm

*Dimension refer to the blade length only



GIESSER Meat Fork

Product Code	Dimension
03-002-00709	18cm
03-002-00710	21cm



GIESSER Meat (Carving) Fork

Product Code	Dimension
03-002-00711	15cm



LACOR Stainless Steel 2-Way Egg Cutter

Product Code	Dimension
02-002-00497	15 x 10 x 3.7cm



LACOR Stainless Steel Egg Slicer

Product Code	Dimension
02-002-00496	Ø10cm



WESTMARK Aluminium Coated Egg Slicer

Product Code	Dimension
03-002-00205	14.6 x 8cm



WESTMARK Aluminium Coated Egg Cutter

Product Code	Dimension
03-002-00206	18.8cm 6 segments



L.TELLIER Stainless Steel Mini Guitare

Product Code	Dimension
03-002-00208(XX)	45 x 23 x 14cm



Stainless Steel Egg Slicer

Product Code
03-002-00210



GIESSER Vegetable Peeler with Plastic Handle

Product Code
03-002-00183



GIESSER Swivel Peeler with Plastic Handle

Product Code
03-002-00212



Plastic Vegetable Swivel Peeler

Product Code
03-002-00184



MICROPLANE Spiral Cutter

Product Code	Colour
03-002-00213	Black
03-002-00214	Green



CCK Stainless Steel Peeler with Wooden Handle

Product Code	Dimension
03-002-00185	Handle 6"



CULINARE Y-Shape Safety Peeler

Product Code
03-002-00186



ZYLISS Swivel Peeler

Product Code
03-002-00189



ZYLISS Tomato Peeler

Product Code	Remarks
03-002-00190	Serrated Blade



KISAG Stainless Steel U-Shape Peeler

Product Code	Remarks
03-002-00195	Stainless Steel
03-002-00196	Plastic



KIWI Stainless Steel Peeler with Orange Handle

Product Code	Dimension
03-002-00193	Small



KIWI Stainless Steel Peeler with Knife and Orange Handle

Product Code	Dimension
03-002-00194	18.2cm



ECONOMY U-Shape Plastic Peeler

Product Code	Dimension
03-002-00198	12.1cm



GIESSER Tomato Peeler

Product Code	Dimension
03-002-00199	19cm



GIESSER Julienne Slicer

Product Code	Dimension
03-002-00211	Cut 3mm



L.TELLIER Stainless Steel Scallop Blade Truffles Slicer

Product Code	Dimension
03-003-00015	18.5cm



WESTMARK Spiral Cutter / Deco Grater

Product Code	Dimension
03-002-00215	14.5cm



GIESSER Potato Spiral

Product Code	Dimension
03-002-00216	24cm



L.TELLIER Turn Up

Product Code	Dimension	Model
03-002-00270	5cm	TU01
03-002-00271	4cm	TU02



L.TELLIER Garland Pin

Product Code	Dimension
03-002-00217	15.2 x 11.1cm



GIESSER Grapefruit Knife with Plastic Handle

Product Code	Dimension*
03-002-00201	20cm



GIESSER V-Cut Decorator with Plastic Handle

Product Code	Dimension*
03-002-00222	20.5cm



GIESSER Decorating Knife Forged Blade with PAG Handle

Product Code	Dimension*
03-002-00223	11cm

*Dimension refer to the blade length only



WESTMARK *Stainless Steel Crinkle Cutter*

Product Code	Dimension	Colour
03-002-00224	21cm	Black



WESTMARK *Gherkin Decorator (7 Blades)*

Product Code	Dimension	Colour
03-002-00225	16cm	Red



ATLANTIC CHEF *Potato Peeler*

Product Code
03-002-00202



ATLANTIC CHEF *Orange Peeler*

Product Code
03-002-00203



ATLANTIC CHEF *Lemon Decorator*

Product Code
03-002-00227



ATLANTIC CHEF *Butter Curler*

Product Code
03-002-00228



ATLANTIC CHEF *Apple Corer*

Product Code	Dimension
03-002-00273	Ø1.6cm



GIESSER *Apple Corer with Plastic Handle*

Product Code	Dimension
03-002-00272	Ø1.6cm



L.TELLIER *Pineapple Coring Tool*

Product Code	Dimension
03-002-00277	Ø2.8cm



WESTMARK *Stainless Steel Pineapple Slicer*

Product Code	Dimension
03-002-00221	25cm



DE BUYER *Stainless Steel Universal Corer*

Product Code	Dimension	Colour
03-002-00274	Ø1.3cm	Orange
03-002-00275	Ø2cm	Green
03-002-00276	Ø3cm	Red



WESTMARK *Apple Divider*

Cuts into 10pieces, and coring of the apple.

Product Code	Dimension
03-002-00281	17 x 11cm; Ø9cm



ATLANTIC CHEF *Twin Melon Baller*

Product Code	Dimension
03-002-00287	Ø2.2/2.5cm



ATLANTIC CHEF *Oval Melon Baller*

Product Code	Dimension
03-002-00289	2.8 x 1.7cm



ATLANTIC CHEF *Melon Baller*

Product Code	Dimension
03-002-00282	Ø1.2cm
03-002-00283	Ø1.5cm
03-002-00284	Ø2.2cm
03-002-00285	Ø2.5cm
03-002-00286	Ø3.0cm



GIESSER Oval Melon Baller with Plastic Handle

Product Code
03-002-00288



GIESSER Oval Melon Baller Wavy Edge with Plastic Handle

Product Code
03-002-00290



Stainless Steel Tomato Wiz / Corer

Product Code	Dimension
03-002-00278	4.1/2"



GIESSER Decorating Set

Product Code	
03-002-00232	7 pcs/set
03-002-00684	Empty Bag for Decorating Set



L. TELLIER Vegetable Carving Tool with Case

Product Code	
03-002-00229(XX)	Case pack 28pcs/set



L. TELLIER Vegetable Carving Tools & Whetstone Set

Product Code	
03-002-00230	Case pack 18pcs/set



GIESSER Shaping Knives

Product Code	
03-002-00231	Set of 8pcs



CCK Vegetable Carving / Decoration Knife

Product Code	
03-002-00233	Case pack 6pcs/set
03-002-00234	Case pack 6pcs/set
03-002-00235	Case pack 17pcs/set



GIESSER Oyster Opener / Knife with Pom Handle

Product Code
03-002-00291



ATLANTIC CHEF Oyster Opener / Knife

Product Code
03-002-00292



FISCHER Oyster Knife

Product Code
03-002-00294



Oyster Opener with Brown Bakelite Handle

Product Code
03-002-00295



Pizza Cutter

Product Code	Dimension
03-002-00297	Ø2"
03-002-00298	Ø4"
03-002-00299	Ø4" Wooden Handle



GIESSER Pizza Cutter with Plastic Handle

Product Code	Dimension
03-002-00296	Ø12cm



Stainless Steel Double Pastry Wheel with Plastic Handle

Product Code	Dimension
03-002-00301	Ø5.5cm



GIESSER Mincing Knife with Plastic Handle

Product Code	Dimension	
03-002-00306	15cm	Single
03-002-00304	15cm	Double
03-002-00307	22cm	Single
03-002-00305	22cm	Double
03-002-00308	36cm	Single



WESTMARK Spiral Cutter / Deco Grater

Scissors, shears, pliers & bone tweezers

Product Code	Dimension	Colour
03-002-00310	20cm	Green



GIESSER Universal Schere Scissor

Product Code	Dimension
03-002-00311	22cm



Stainless Steel Multi-Use Kitchen Scissors, Jpn

Product Code	Dimension
03-002-00312	20.5cm



SHI BA ZI Stainless Steel Kitchen Scissors

Product Code	Dimension
03-002-00313	19cm



ZHANG XIAO QUAN Powerful Stainless Steel Scissors with Black Handle

Product Code	Dimension
03-002-00314	20cm



EXCEL PARTNER Stainless Steel Kitchen Scissors, Jpn

Product Code	Dimension
03-002-00315	23cm



Stainless Steel Kitchen Scissors with Black Handle, Jpn

Product Code	Dimension
03-002-00316	23cm



Stainless Steel Kitchen Scissors, Jpn

Product Code	Dimension
03-002-00317	19.5cm



ATLANTIC CHEF Detachable Kitchen Scissors

Product Code	Dimension
03-002-00318	21cm



Stainless Steel Scissors with Plastic Handle

Product Code	Dimension
03-002-00320	21.5cm



GIESSER Stainless Steel Poultry Shear

Product Code	Dimension
03-002-00324	25.5cm



LACOR Stainless Steel Poultry Shears

Product Code	Dimension
03-002-00325	24cm



GLOBAL Kitchen Shears

Product Code	Dimension
03-003-00010	21cm



Universal Crab Scissors with Stick

Product Code	Dimension
03-002-00326	17cm



Crab Scissors with Purple Handle

Product Code	Dimension
03-002-00327	20.5cm



SILKY Crab Scissor

Product Code	Dimension
03-002-00328	21cm



IBILI Prawn Peeling Scissors

Product Code	Dimension
03-002-00329	18cm



GIESSER Fish Fin Shears

Product Code	Dimension
03-002-00330	26cm



CCK Iron Fish Plier

Product Code	Colour
03-002-00331(XX)	■ Black



WESTMARK Fish Bone Tweezer / Pincers

Product Code	Dimension
03-002-00332	14cm



Stainless Steel Heavy Duty Bone Tweezer Flat

Product Code	Dimension
03-002-00333	12 x 1.5cm



GIESSER Fish Scaler

Product Code	Dimension
03-002-00334	28cm



WESTMARK SCALEX Aluminium Coated Fish Scaler with Stainless Steel Blade

Product Code	Dimension
03-002-00335	20.5cm



Stainless Steel Heavy Duty Fish Scaler, Jpn

Product Code	Dimension
03-002-00336	20cm



Stainless Steel Fish Scaler

Product Code	Dimension
03-002-00337	Stainless Steel Handle
03-002-00338	Wooden Handle



Copper Fish Scaler with Plastic Handle

Product Code	Dimension
03-002-00339	20cm



Plastic Fish Scaler

Product Code	Dimension
03-002-00340	Small
03-002-00341	Large

SHARPENING TOOLS



GIESSER *Sharpening Steel Round Standard Cut with Nylon Handle*

Dimension	Black	Blue	Brown	Yellow	Green	Red	White
25cm	03-002-00589	03-002-00590	03-002-00591	03-002-00592	03-002-00593	03-002-00594	03-002-00595
31cm	03-002-00596	03-002-00597		03-002-00598	03-002-00599	03-002-00600	03-002-00601



ATLANTIC CHEF *Sharpening Steel Round Standard Cut*

Dimension	Black	Blue	Brown	Yellow	Green	Red	White
25cm	03-002-00602						
31cm	03-002-00603	03-002-00604	03-002-00605	03-002-00609	03-002-00606	03-002-00607	03-002-00608



GIESSER *Sharpening Steel Oval Standard Cut with Nylon Handle*

Dimension	Black	Blue	Green	Red
31cm	03-002-00611	03-002-00612	03-002-00613	03-002-00614

GIESSER *Sharpening Steel Round Fine Cut with Nylon Handle*

Product Code	Dimension	Colour
03-002-00610	25cm	Black



GIESSER *Sharpening Steel Oval Fine Cut with Nylon Handle*

Product Code	Dimension	Colour
03-002-00615	31cm	Black

GIESSER *Sharpening Steel Oval Extra-Fine Cut with Nylon Handle*

Product Code	Dimension	Colour
03-002-00616	31cm	Black

GLOBAL *Diamond Steel Plastic Guard*

Product Code	Dimension
03-005-00005	30cm



GIESSER *Diamond Sharpening Machine*

Product Code	Dimension
03-002-00627(XX)	20.5 x 55.9 x 19.7cm

Elec. Specs. : 230V / 50Hz / 1.3A / 0.18kW
2500rpm. 2 Grinding Stations, 2 Polishing Stations

EDLUND *Electric Knife Sharpener*

Product Code	Model
03-002-00648	395 230V

CHEF'S CHOICE *Electric / Manual 3-Stage Diamond Knife Sharpener*

Product Code	Elec. Spec.
03-002-00632	230V / 50Hz / 44W

For Straight & Serrated Knives



CHEF'S CHOICE *Electric Diamond Hone Sharpener 3 Stage with Stainless Steel Cover*

3-stage commercial sharpener designed to sharpen both straight-edge and serrated knives. Stages 1 and 2 use 100% diamond abrasive disks and Stage 3 uses ultra-fine, proprietary stropping disks to create razor sharp, arch-shaped edges that stay sharp longer. Precision angle guides eliminate all guesswork and the detachable sharpening module is commercial dishwasher safe and replaceable. NSF certified.

Product Code	Elec. Spec.
03-002-00628	230V / 60Hz / 175W



CHEF'S CHOICE *Electric Diamond Hone Sharpener Angle Select with White Cover 3 Stage*

Designed to sharpen Asian, European and American style knives, you can restore and recreate both a 15 degree angle on your Asian style knives and a 20 degree angle on your European and American style cutlery. It will quickly and easily sharpen virtually all quality cutlery including American, European or Asian style household knives; fine edge or serrated blades; Santuko and traditional Japanese style single bevel edges, including the thicker Deba style blades; sports knives and pocket knives.

Product Code	Elec. Spec.
03-002-00629	230V / 50Hz / 75W



CHEF'S CHOICE *Commercial Electric 2-Stage Diamond Knife Sharpener*

This compact professional electric 2-stage knife sharpener sharpens both straight edge and serrated knives to better than factory edges, in just minutes. 2-stage sharpening provides "Gothic Arch" shaped edges which are stronger and longer lasting than hollow ground or conventional 'V' edges.

Product Code	Elec. Spec.
03-002-00630	230V / 50Hz / 75W



CHEF'S CHOICE *Hybrid Sharpener (Manual / Electric) Sharpener 2 Stage*

Effectively combines electric and manual advanced sharpening technology for an extremely sharp, burr-free edge with lots of bite. Using Chef's Choice signature 100% diamond abrasives in both stages, Stage 1 is electric for sharpening and Stage 2 is manual for honing and resharpening.

Product Code	Elec. Spec.
03-002-00631	230V / 50Hz / 40W



CHEF'S CHOICE *Diamond Hone Knife Sharpener, 3 Stage*

A perfect manual sharpener for those who own Asian and European/American style knives and want to quickly and easily apply a superior, shaving sharp edge! Sharpens all quality knives including straight edge household and kitchen knives, Santoku, sports and pocket knives, as well as serrated knives.

Product Code
03-002-00633



CHEF'S CHOICE *Pronto Manual Diamond Hone Sharpener*

Suitable for both straight and serrated edge knives. Uses 100% diamond abrasive wheels that sharpen simultaneously "into" and "out" of the knife edge for a superior burr-free edge with lots of bite.

Product Code
03-002-00634



CHEF'S CHOICE *Manual Diamond Hone Knife Sharpener 3 Stage, Angle Select®, Pronto*

Product Code
03-002-00635



CHEF'S CHOICE *Manual Knife Sharpener, 2 Stage, Diamond Hone*

Product Code
03-002-00637



LACOR *Manual Knife Sharpener*

Product Code
03-002-00639



GLOBAL *Minisharp Plus 3 Water Sharpener*

Product Code
03-005-00002



GLOBAL *2-in-1 Ceramic Whetstone with Holder*

Product Code
03-005-00003

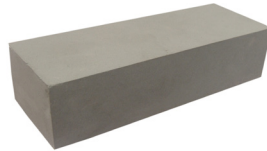


Japanese Red Sharpening Stone #110

Product Code	Dimension
03-002-00617	25 x 9 x 3.4cm

**CCK Sharpening Stone**

Product Code	Dimension
03-002-00619	20 x 7.5 x 5cm

**CCK Sharpening Stone**

Product Code	Type
03-002-00620	Extra Smooth

**NANIWA Sharpening Stone GC#220 Coarse**

Product Code
03-005-00006

**NANIWA Sharpening Stone MicronDX #1000 Med**

Product Code
03-005-00007

**NANIWA Sharpening Stone #4000 Finishing**

Product Code
03-005-00008

**CARBORUNDUM Combination Sharpening Stone**

Product Code	Dimension
03-002-00622	8 x 2 x 1"
03-002-00623	8 x 3 x 2"

**SPIT FIRE Combination Sharpening Stone**

Product Code	Dimension
03-002-00624	8 x 2 x 1"
03-002-00625	8 x 3 x 2"

**CCK Wooden Stand for Sharpening Stone**

Product Code	Dimension
03-002-00626	8 x 2 x 1"

**Electric UV Knife Sterilizer**

Product Code	Elec. Spec.
03-002-00642	220V

**LACOR UV Knife Sterilizer**

Product Code	Elec. Spec.
03-002-00640	11W 220-230V (For 10 Knives)
03-002-00641	15W 220-230V (For 20 Knives)

**EDLUND Stainless Steel Knife Sanitizing System**

Product Code	Type
03-002-00643(XX)	with Red Insert
03-002-00644(XX)	with Drain Tube

**EDLUND Knife Rack with Skirt**

Product Code	Dimension
03-002-00649	14" KR-700 S/S Back Plate
03-002-00650	12" KR-699 Open Back Plate

**EDLUND Stainless Steel Knife Sanitizing Rack**

Product Code	Dimension
03-002-00645	KSR-5000

**EDLUND Locking Knife Cabinet with Keyed Locking Handle**

Product Code	Dimension
03-002-00651	KLC994

**ALEGACY Stainless Steel Knife Rack**

Product Code	Dimension
03-002-00646	30 x 6.25 x 32cm



SAN JAMAR PC Knife Rack

Product Code	Dimension
03-002-00667	38 x 10.8 x 38cm



EDLUND Knife Rack with Skirt and Stainless Steel Insert for Model KR-50

Product Code	Dimension	Colour
03-002-00652	12"	Black
03-002-00653	12"	Red
03-002-00654	12"	Yellow
03-002-00655	12"	Green
03-002-00656	12"	Blue
03-002-00657	12"	Tan
03-002-00658	12"	White
03-002-00659(XX)		No Insert



EDLUND Knife Rack Molded Insert for Model KR-50 (6pcs/pkt)

Product Code	Colour
03-002-00660(XX)	Set of 6 colours
03-002-00661(XX)	Black
03-002-00662(XX)	Red
03-002-00663(XX)	Yellow
03-002-00664(XX)	Green
03-002-00665(XX)	Blue
03-002-00666(XX)	White



EDLUND Stainless Steel Knife Block KBS-2002

Product Code	Dimension
03-002-00668	12"



SAN JAMAR PC Knife Rack

Product Code	Dimension
03-002-00647	14.5 x 18.3 x 4"



GLOBAL 8-pc Knife Block

Product Code	Dimension
03-005-00004	H30.5cm



GIESSER PLC Knife Hygiene Boxes (For 4 Knives and 1 Steel Rod)

Dimension	Black	Blue	Yellow	Green	Red	White
50 x 26.5 x 10cm	03-002-00669	03-002-00670	03-002-00671	03-002-00672	03-002-00673	03-002-00674



CCK Stainless Steel Knife Box

Product Code	Dimension
03-002-00676	27 x 14.3 x 14cm 3 Slots
03-002-00677	31.5 x 18 x 14cm 4 Slots



Stainless Steel Knife Box

Product Code	Dimension
03-002-00678	Thickness 0.6mm 3 Slots
03-002-00679	Thickness 0.6mm 4 Slots



GIESSER Magnet Boarder

Product Code	Dimension
03-002-00680	35cm
03-002-00681	50cm



ATLANTIC CHEF Magnet Boarder

Product Code	Dimension
03-002-00682	35cm
03-002-00683	50cm



SAN JAMAR ALLERGEN SAF-T Zone System

Cutting Board, Knife, Tong, Turner in 1 Case Set

Product Code	Colour
03-002-00675	Purple



GIESSER Empty Knife Bag Roll

Product Code	Colour
03-002-00685	Red
03-002-00686	Blue



ATLANTIC CHEF Knife Bag

Product Code	Dimension	Slots
03-002-00687	52 x 15 x 4cm	7 Slots
03-002-00688	47 x 16 x 4cm	8 Slots
03-002-00689	52 x 19 x 6cm	14 Slots
03-002-00690	50 x 23 x 10cm	Triple Zip



GIESSER Magnetic Knife Guard

Product Code	Dimension	Quantity
03-002-00691	26 x 5.6cm	1pcs/pkt
03-002-00692	23 x 3.3cm	1pcs/pkt
03-002-00693	15 x 2.3cm	1pcs/pkt



ATLANTIC CHEF Knife Guard

Product Code	Dimension
03-002-00694	1 x 4.5"
03-002-00695	2 x 11"
03-002-00696	2 x 8.5"
03-002-00697	1.5 x 10.5"
03-002-00698	1.5 x 6.5"



SAN JAMAR SAF-T-Grip Cutting Board

Dimension	Black	Blue	Brown	Yellow	Green	Red	White	Purple
6 x 9 x 3/8"	03-002-00361			03-002-00365	03-002-00362	03-002-00363	03-002-00364	03-002-00366
12 x 18 x 1/2"		03-002-00367	03-002-00368	03-002-00372	03-002-00369	03-002-00370	03-002-00371	03-002-00373



SAN JAMAR Cut-N-Carry Cutting Board with S-Hook

Dimension	Blue	Brown	Green	Red	White	Yellow
12 x 18 x 1/2"	03-002-00380	03-002-00381	03-002-00382	03-002-00383	03-002-00384	03-002-00385
15 x 20 x 1/2"	03-002-00386		03-002-00387	03-002-00388	03-002-00389	03-002-00390
18 x 24 x 3/4"		03-002-00391(XX)				


SAN JAMAR KATCHALL *Cut-N-Carry World Gourmet Cutting Board with S-Hook*

Dimension	Blue	Brown	Green	Red	White	Yellow
26.5 x 32.5 x 1.5cm	03-002-00398	03-002-00399	03-002-00400	03-002-00401	03-002-00402	03-002-00403
32.5 x 53 x 1.5cm	03-002-00392	03-002-00393	03-002-00394	03-002-00395	03-002-00396	03-002-00397


SAFICO *High Density PLC Cutting Board*

Dimension	Blue	Beige	Green	Red	White	Yellow
10 x 6 x ½"					03-002-00470	
13 x 10 x ½"	03-002-00465	03-002-00468	03-002-00466	03-002-00467	03-002-00464	03-002-00469
18 x 12 x ½"	03-002-00417	03-002-00420	03-002-00418	03-002-00419	03-002-00416	03-002-00421
18 x 12 x ¾"	03-002-00411	03-002-00414	03-002-00412	03-002-00413	03-002-00410	03-002-00415
18 x 12 x 1"	03-002-00405	03-002-00408	03-002-00406	03-002-00407	03-002-00404	03-002-00409
20 x 15 x ½"	03-002-00435	03-002-00438	03-002-00436	03-002-00437	03-002-00434	03-002-00439
20 x 15 x ¾"	03-002-00429	03-002-00432	03-002-00430	03-002-00431	03-002-00428	03-002-00433
20 x 15 x 1"	03-002-00423	03-002-00426	03-002-00424	03-002-00425	03-002-00422	03-002-00427
24 x 18 x ½"	03-002-00453	03-002-00456	03-002-00454	03-002-00455	03-002-00452	03-002-00457
24 x 18 x ¾"	03-002-00447	03-002-00450	03-002-00448	03-002-00449	03-002-00446	03-002-00451
24 x 18 x 1"	03-002-00441	03-002-00444	03-002-00442	03-002-00443	03-002-00440	03-002-00445
32.5 x 53 x 2cm	03-002-00459	03-002-00462	03-002-00460	03-002-00461	03-002-00458	03-002-00463


A-STAR *Plastic Rectangle Chopping Board*

Dimension	White	Blue	Green	Red	Yellow
24.7 x 15 x 0.9cm	03-002-00471				
30 x 20.7 x 1cm	03-002-00472				
35.4 x 25.2 x 1.2cm	03-002-00473	03-002-00474	03-002-00475	03-002-00476	03-002-00477
44 x 29 x 1.2cm	03-002-00478	03-002-00479	03-002-00480	03-002-00481	03-002-00482
50.5 x 34 x 1.4cm	03-002-00483	03-002-00484	03-002-00485	03-002-00486	03-002-00487


EPICUREAN GOURMET *Wooden Fibre Cutting Board (Heat resistant up to 176°C)*

Dimension	Natural	Slate
14.5 x 11.25 x ¾"	03-002-00493	03-002-00494
17.5 x 13 x ¾"	03-002-00495	03-002-00496
19.5 x 15 x ¾"	03-002-00497	03-002-00498

EPICUREAN KITCHEN *Wooden Fibre Cutting Board (Heat resistant up to 176°C)*

Dimension	Natural	Slate
8 x 6 x ¼"	03-002-00500	03-002-00501
12 x 9 x ¼"	03-002-00502	03-002-00503
15 x 11 x ¼"	03-002-00504	03-002-00505
18 x 13 x ¼"	03-002-00506	03-002-00507


ALEGACY High Density Poly Slab / Cutting Board

Product Code	Dimension	Colour
03-002-00488	96 x 48 x 1"	White
03-002-00489	96 x 48 x 1"	Blue
03-002-00490	96 x 48 x 1"	Red
03-002-00491	96 x 48 x ¾"	White
03-002-00492	96 x 48 x ½"	White


EPICUREAN HANDY Wooden Fibre Cutting Board with Handle (Heat resistant up to 176°C)

Product Code	Dimension	Colour
03-002-00509	14 x 7 x ¾"	Natural


EPICUREAN BIG BLOCK Wooden Fibre Cutting Board

Product Code	Dimension	Colour
03-002-00510	21 x 16 x 1"	Natural
03-002-00511	24 x 18 x 1"	Natural


High Density Round Plastic Chopping Board

Product Code	Dimension
03-002-00535	40 x 10cm
03-002-00536	45 x 10cm
03-002-00537	50 x 10cm
03-002-00538	50 x 15cm


Wooden Rectangle Chopping Board

Product Code	Dimension
03-002-00512	6 x 10 x 1"
03-002-00513	8 x 12 x 1"
03-002-00514	10 x 14 x 1"
03-002-00515	12 x 17 x 1"
03-002-00519(XX)	12 x 18 x 1"
03-002-00520(XX)	12 x 20 x 1"
03-002-00521(XX)	12 x 24 x 1"
03-002-00522(XX)	17 x 19 x 2"
03-002-00516	18 x 24 x 1"
03-002-00517	18 x 24 x 2"
03-002-00518	24 x 12 x 2"


Wooden Round Chopping Board

Product Code	Dimension
03-002-00523	Ø10"
03-002-00524	Ø11"
03-002-00525	Ø12"
03-002-00526	Ø13"
03-002-00527	Ø14"
03-002-00528	Ø15"
03-002-00534(XX)	Ø15"
03-002-00529	Ø16"
03-002-00530	Ø18"
03-002-00533(XX)	Ø18 x 6"


Medium Density PLC Round Chopping Board

Dimension	White	Blue	Green	Red	Yellow
Ø12 x 2"	03-002-00541	03-002-00542(XX)	03-002-00539	03-002-00540	03-002-00543(XX)
Ø14 x 3"	03-002-00547	03-002-00544	03-002-00545	03-002-00546	
Ø15 x 3"	03-002-00550		03-002-00548	03-002-00549	
Ø16 x 1"					03-002-00551(XX)
Ø16 x 4"	03-002-00555	03-002-00552	03-002-00553	03-002-00554	03-002-00556
Ø16 x 6"	03-002-00559		03-002-00557	03-002-00558	
Ø18 x 4"	03-002-00562	03-002-00563(XX)	03-002-00560	03-002-00561	
Ø18 x 6"	03-002-00568	03-002-00565	03-002-00566	03-002-00567	03-002-00569
Ø20 x 6"	03-002-00570				



Low Density PLC Cutting Board Slab

Product Code	Dimension	Colour
03-002-00573	96 x 48 x 1"	White

*Customized size upon request available.



Stainless Steel Chopping Board Stand

Product Code	Dimension	
03-002-00575	Ø42 x 75cm	For 16" Board
03-002-00576	Ø47 x 75cm	For 18" Board
03-002-00577	Ø52 x 75cm	For 20" Board



Stainless Steel Chopping Board Skirting

Product Code	Dimension
03-002-00578	80 x 40 x 0.04cm
03-002-00579	Thickness 0.06cm



SAN JAMAR Cutting Board Mate

Product Code	Dimension
03-002-00582	10 x 16"
03-002-00583	13 x 18"
03-002-00584	16 x 22"



CCK Stainless Steel Crescent Shape Chopping Board Container

Product Code	Dimension
03-002-00580	8 x 4.5"
03-002-00581	10 x 5"



Stainless Steel Drying Rack for 6 Cutting Boards

Product Code	Dimension
03-002-00585	27 x 30.7 x 30.2cm



SAFICO PLC Drying Rack for 6 Chopping Boards

Product Code	Dimension
03-002-00586	40 x 30cm



SPARTA Cutting Board Scrapper / Refinisher

Product Code	Colour
03-002-00587	White
03-002-00588	Replacement Blade for Cutting Board. Case pack 2pcs/pkt