

# W&H PEACOCK

AUCTIONEERS & VALUERS

MARCH SALE OF

## *Antique Furniture & Collectors' items, Jewellery & Watches*

### VIEWING

#### **Antique Furniture & Collectors' Items Jewellery & Watches**

Friday 22nd February – 9am to 8pm,  
Saturday 23rd February – 9am to 4pm,  
Thursday 28th February – 9am to 6pm,  
Morning of sale from 9am

### AUCTION

#### **Antique Furniture & Collectors' Items Jewellery & Watches**

Friday 1st March 2019  
Commencing at 11am

#### **Jewellery & Watches**

Friday 1st March 2019  
Commencing at 4pm

LIVE INTERNET BIDDING



CATALOGUES

£5 by post, online at

[www.peacockauction.co.uk](http://www.peacockauction.co.uk)

# W&H PEACOCK

---

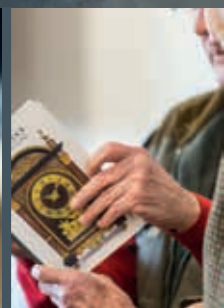
## AUCTIONEERS & VALUERS

Established 1901

Why not visit the Bedford Auction Centre  
to enjoy the excitement of a real auction.



Eastcotts Park, Wallis Way, Bedford, MK42 0PE  
Tel: 01234 266366 | [info@peacockauction.co.uk](mailto:info@peacockauction.co.uk)  
[www.peacockauction.co.uk](http://www.peacockauction.co.uk)



*Furniture & Rugs*



## Furniture & Rugs

---



Lot 2

**1**  
A late 19th century rosewood sideboard, the mirrored superstructure with pierce-work decoration over a gallery, three drawers and two doors, on tapering block feet, l. 138 cm  
*£150 - £200*

**2**  
An 18th century-type oak refectory table, the two-plank top supported by six baluster supports over a second tier and bun feet, l. 240 cm  
*£200 - £300*

**3**  
A 19th century mahogany bookcase cabinet, the pair of astragal glazed doors over a secretaire drawer and three further long drawers, on bracket feet, w. 107 cm  
*£250 - £350*

**4**  
A Victorian and later carved oak breakfront bookcase on a plinth base, l. 186 cm  
*£80 - £120*

Lot 3



**5**  
An early 20th century mahogany, strung and walnut crossbanded revolving bookcase on scrolled feet with castors, w. 52 cm  
*£80 - £120*

**6**  
An early 20th century ebonised revolving bookcase with brass caps, on a central swivel stand, w. 59 cm  
*£80 - £120*

**7**  
An oak turner's chair with a triangular seat and loose button leather cushion  
*£60 - £80*



8

Spare lot

9

A 19th century mahogany display cabinet on stand, the pair of glazed doors enclosing three adjustable shelves, on square tapering legs with block feet, w. 107 cm    £100 - £150



Lot 10

10

A 19th century and later wall mirror with a foliate frieze and classical pilasters, 78 x 51 cm overall    £30 - £50

11

A late 20th century woolen rug with a red ground, repeating motifs and matching bands, 220 x 163 cm    £150 - £200

12

An early 20th century Turkomen-type carpet, the red ground with repeated medallions within matching geometric bands, 298 x 203 cm    £150 - £200



Lot 11

13

A mid-19th century Japanned papier mache tilt-top table, the surface decorated with a group of figures within a foliate band over a shaped apron on a turned and decorated column with a platform base and three feet, stamped 'Jennens & Bettridge, London' to the underside, surface 77 x 66 cm    £200 - £300



Lot 13



Lot 14

**14**  
A Victorian mahogany and later button upholstered fireside armchair £60 - £80

**15**  
A Florentine wall mirror, the rectangular plate within a plaster and carved wooden frame, overall 42 x 44 cm £30 - £50

**16**  
A Sheraton-style mahogany and strung serpentine fronted sideboard, on tapering legs with block feet, l. 151 cm £40 - £60

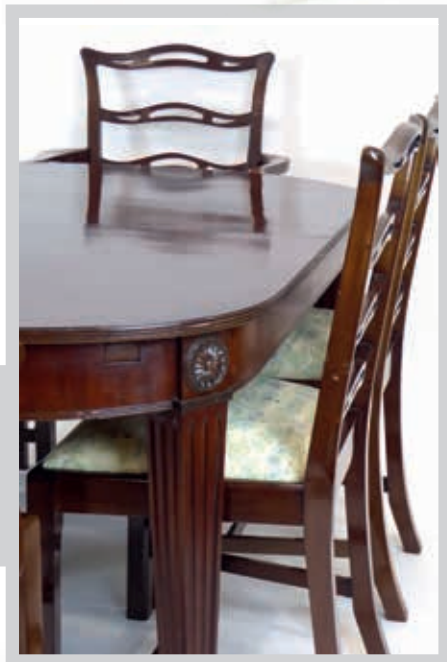
**17**  
A Victorian mahogany extending dining table, with three fitted leaves, on turned legs with castors, 142 to 287 cm £300 - £400

**18**  
A 20th century Regency-style mahogany extending dining table, with two fitted leaves, 152 to 212 cm, together with a set of six mahogany ladderback dining chairs with drop-in seats including two carvers £100 - £200

**19**  
A Victorian mahogany and button upholstered rocking chair £80 - £120



Lot 19





Lot 20

**20**

A set of four William IV rosewood bar-back dining chairs with drop-in seats on turned front legs *£100 - £150*

**21**

A William IV rosewood tilt-top dining table, the circular surface with a moulded edge over an acanthus leaf capped column, platform base and three claw feet, d. 127 cm *£400 - £500*

**22**

A set of four 19th century mahogany and upholstered dining/side chairs with barley twist supports and stretchers, stamped Holland & Sons *£200 - £300*



Lot 24

**23**

A late 19th century mahogany and strung Pembroke table with a single frieze drawer, on square tapering legs with castors, w. 81 cm *£60 - £80*

**24**

A 17th century and later oak coffer with panelled front and sides, dated 1615, carved to the front and lid, l. 114 cm *£150 - £200*



Lot 21



Lot 25

25

An Arts & Crafts oak bookcase in the manner of Shapland and Petter, the three slanted tiers with floral relief decorated plaques to the fronts, supported by a pair of florally carved sides, h. 89 cm

£200 - £300

26

A 19th century rosewood card table, the folding surface over a cushioned frieze on a cylindrical tapering column and platform base with integral scrolled legs, w. 91 cm

£200 - £300



Lot 27

27

A 19th century mahogany chest of four long graduated drawers on bracket feet, w. 102 cm

£200 - £300

28

A 19th century mahogany tea table, the folding surface over a cushioned frieze on a square inverted tapering column, platform base and four reeded legs with brass claw caps on castors, w. 102 cm

£150 - £200

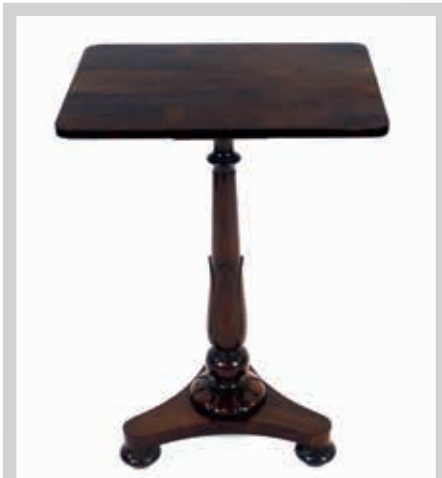


Lot 26



Lot 28





**29**

An early 19th century rosewood occasional table, the rectangular surface over a tapering support, platform base and three turned feet, stamped 'A Solomon 59 Queen Street' to the underside, w. 52 cm *£120 - £150*

**30**

An early 19th century rosewood tilt-top table, the circular surface on a tapering column, platform base and scrolled feet with castors, d. 90 cm *£150 - £200*

**31**

A reproduction mahogany occasional table, the circular surface on a turned column and tripod base, d. 61 cm *£40 - £60*



Lot 32

**32**

A 19th century mahogany occasional table, the later rectangular surface on a barley-twist support and tripod base, w. 62 cm *£60 - £100*



Lot 33

**33**

An Italian two-fold screen, the fabric upholstery depicting Fascist motifs, h. 137 cm \*By repute the fabric for this screen was obtained from Mussolini's villa in Rome *£200 - £300*



Lot 34

**34**

A 19th century rosewood sewing table, the single drawer over a suspended basket on a turned column, platform base and turned feet, w. 49 cm *£100 - £150*



Lot 35

**35**

A set of eight early 20th century mahogany dining chairs with drop-in seats, including a carver, together with another similar reproduction carver *£200 - £300*

**36**

An early 20th century rug, the three medallions within a red and blue ground and matching borders, 140 x 200 cm *£50 - £80*

**37**

A hand woven Kelim carpet decorated with hexagonal motifs in various shades on a claret ground, approximately 360 x 180 cm *£80 - £120*

**38**

A 19th century mahogany framed fire screen/stand, the brass handle above a glazed display section on splayed feet joined by a cross stretcher and on four brass castors, h. 122.5 cm *£100 - £150*

**39**

An Edwardian mahogany occasional table of octagonal form on turned legs joined by a lower tier, w. 74 cm *£20 - £30*

**40**

An 18th century and later tripod wine table, the circular tilt-action elm surface above a later oak base on pad feet, d. 58 cm *£40 - £60*

**41**

An early 19th century provincial elm kitchen chair with strung seat *£20 - £30*

**42 - 70**

Spare lots



Lot 38

*The Owen Tollman Collection  
of Early Typewriters*





## The Owen Tollman Collection of Early Typewriters

---



Lot 71

**71**

A 1920's Remington Standard No. 7 type-bar upstroke typewriter manufactured by Wyckhoff, Seamans & Benedict of Ilion, New York, U.S.A., 225018 *£30 - £50*



Lot 72

**72**

A cased American Blickensderfer No. 5 portable typewriter, c. 1900, with a DHIATENSOR keyboard and instructions *£150 - £200*

**73**

A 1920's Royal Barlock typewriter manufactured by The Typewriter Co., Queen St, London *£150 - £200*

**74**

A 'The Empire' thrust-action typewriter manufactured by Williams Manufacturing Company, Montreal, Canada, c. 1900 \*Bearing a silver presentation plaque 'Presented to The Rev. Edward Morgan...1901' *£30 - £50*

**75**

A 1920's 'The Empire 2' thrust-action typewriter manufactured by Williams Manufacturing Company, Montreal, Canada, 117340 *£30 - £50*



Lot 76

**76**

An 'Imperial A' typewriter, c. 1908, manufactured by The Imperial Typewriter Co., Leicester, 7687 *£300 - £500*

**77**

A 'Oliver Typewriter No. 5' manufactured by The Oliver Typewriter Co, Chicago, USA, 342234 *£40 - £60*





**78**

A 1920's Imperial Standard by the Imperial Typewriter Co. Ltd, Leicester, 60216 £30 - £50



Lot 79

**79**

A Corona No. 3 portable typewriter manufactured by Corona Typewriter Company Inc., Frton, N.Y., USA, 64645 £30 - £50

**80**

A Royal Standard No. 6 typewriter manufactured by Royal Typewriter Company, New York, U.S.A. £20 - £30

**81**

A 1940 Imperial Model 58 typewriter, deficient of back plate £10 - £20

**82**

A cased Imperial 'The Good Companion' portable typewriter manufactured by The Imperial Typewriter Co., Leicester £20 - £30

**83**

A cased 1920's Remington 'Noiseless' typewriter, manufactured by Remington Typewriter Co., U.S., N17631 £10 - £20

**84**

A cased 1929 Remington 'Noiseless Portable' typewriter, 'World Service' label to case, N40769 £30 - £50

**85**

A cased Remington 'Portable' typewriter manufactured in the U.S.A. (af) £10 - £20

**86**

A 1950's German mechanical calculator by Brunsviga, 12-30352 £30 - £50

**87**

A cased 1920's American Underwood 'Standard Portable' typewriter £30 - £50

**88**

A cased 1920's American Underwood 'Standard Portable' typewriter £30 - £50

**89**

A cased 1929 Remington 'Portable' typewriter, 'World Service' label to the case, EV188222 £30 - £50

**90**

A cased Silver-Reed SR180 De Luxe typewriter £10 - £20



Lot 91

**91**

An American Smith Premier No. 10 typewriter with a complete keyboard, c.1908 £20 - £30

**92**

An American Paragon 'Remington Standard' type-bar upstroke typewriter £30 - £50

**93**

A set of paper scales by H.E. Messmer Ltd, London, No. 51406 £20 - £30

**94**

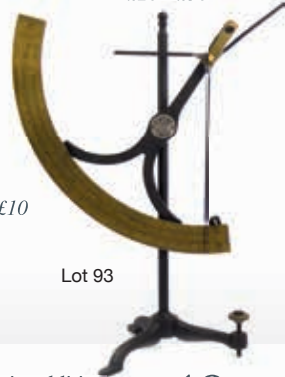
A cased EDL Inc. single range pyrometer £10 - £15

**95**

A Canon 'Star Writer 70' computer £5 - £10

**96 - 100**

Spare Lots



Lot 93

All estimates exclude buyer's premium of 21% including VAT which is payable in addition



@WHPeacock



/WHPeacockAuctioneers

# W&H PEACOCK

AUCTIONEERS & VALUERS

**TO BE SOLD BY AUCTION**

Commencing at 10.30am

## Thursday 14th March

### Sporting Guns, & Antique Arms



S2 Pair of 12 bore double hammer guns by T Horsley, each with 29¾ ins brown damascus barrels inscribed Thomas Horsley Maker York Patent 374 and marked 1 & 2, black powder proof, cyl & cyl, scroll and border engraved locks inscribed Thos Horsley Patent, engraved rebounding hammers and tang, patent push forward lever opening, 14 ins figured straight hand stocks, nos.1455/56 dated 1867

**Sold in our December Sale**  
**Hammer Price £3,200 \*excluding BP**

**Bedford Auction Centre**  
Eastcotts Park, Wallis Way, Bedford, Bedfordshire MK42 0PE  
01234 266 366 or [guns@peacockauction.co.uk](mailto:guns@peacockauction.co.uk)

**[peacockauction.co.uk](http://peacockauction.co.uk)**

*Works of Art  
and Clocks*





Lot 101

**101**

A 19th century dome topped walnut casket with brass foliate mounts and a concertina front, enclosing a pair of gilt highlighted bottles with matching stoppers, w. 14.5 cm     £150 - £200



Lot 102

**102**

A Regency rosewood tea caddy of sarcophagus form with mother-of-pearl inlay and bun feet, w. 21.5 cm     £60 - £80

**103**

A late 19th/early 20th century bulkhead clock, the brass circular casing enclosing an enamelled face with an adjusting dial and Roman numerals, d. 19 cm     £60 - £80



**104**

A 19th century and later bronze and ormolu wall light of figural form, the two sconces with blue enameled caps, presumably French, h. 48 cm     £80 - £120



Lot 106



**105**

An early 20th century poker-work smoker's cabinet surmounted by a pair of birds, the interior with twelve pipe racks, a striker and a lidded compartment, w. 18 cm *£50 - £80*

**106**

A bronze figural pilaster modelled as a lady's head, together with a brass sheep's head mount and a pair of leather panels relief decorated with classical heads (4) *£100 - £150*

**107**

An early 20th century and later brass lamp base decorated with acanthus leaves and scrolls, h. 56 cm *£50 - £80*

**108**

A group of fourteen various vintage golf clubs *£30 - £50*

**109**

A pair of Victorian glass domes, h. 25 cm, encasing a nodding lady and gentleman seated on rustic wooden chairs, together with a similar nodding figure (af) *£100 - £150*

**110**

A collection of beads including Swarovski crystal cubes, Tribal trade beads, glass and ceramic examples etc. *£100 - £150*



Lot 111

**111**

A brass sculptural stand in the manner of W.A.S. Benson, h. 45 cm, with a later glass surface *£30 - £50*

**112**

A Hertfordshire Civil Defence Corps uniform, dated 1961, a 1952 Headquarters greatcoat together with a 1940 gas mask and bag, a tin helmet, a pair of boots and a small group of ephemera *£50 - £80*

**113**

Spare lot

**114**

A group of South American textiles including a beadwork hat and other items, together with a Paraguayan terracotta figure (qty) *£20 - £30*

**115**

John Speed (1552-1629), 'Bedford Shire and the situation of Bedford described with the armes of thos Honorable Families...' [sic], hand-coloured engraved map, with book entry verso, 40 x 52 cm *£80 - £120*



Lot 116

**116**

Two miniature First World War German pickelhaube helmets with rigid leather cases and brass mounts, max. h. 15 cm *£100 - £200*

**117**

A 19th century rosewood and mother-of-pearl inlaid box of sarcophagus form on bun feet, w. 31 cm *£80 - £120*

**118**

An Edwardian mahogany and inlaid aneroid barometer together with a rosewood cased metronome *£40 - £60*



Lot 117

**119**

A cast iron money box in the form of three baseball players, 'Hometown Battery', w. 23 cm  
£50 - £80

**120**

For Restoration: an Italian glass chandelier by Murano, c. 2006  
£50 - £80



**121**

Franz Xaver Bergmann (1861-1936), an Austrian bronze modelled as an owl seated on the outstretched branch of a stump, stamped 'Geschutz 478' to the owl and 'Bergman Geschutz' to the stump, h. 17 cm  
£400 - £600

**122**

A 1920/30's oak smoker's cabinet, the two doors enclosing a fitted interior, w. 29 cm  
£30 - £40

**123**

A Victorian oak cased set of travelling brass scales, together with a set of postal scales and two pine crates  
£30 - £40

**124**

A Tramp Art box with brass studs, dated 1904, w. 29 cm  
£60 - £80

**125**

Benjamin Peers, Chester: a late 18th/early 19th century longcase clock, the painted face with Roman numerals, secondary dial, date aperture and moon phase, within a mahogany case, the hood with swan's neck pediment £250 - £350

**126**

A late 19th/early 20th century students violin with single piece back, bearing 'Stradivarius' label, overall l. 59 cm, length from button 37 cm, with case and two bows  
£50 - £80



Lot 127



Lot 125

**127**

A modern Remex brass 'mystery' timepiece, the circular white dial with black Roman numerals, the movement of ferris wheel design supporting large metal ball bearings under a five glass case, serial No. 08/03/13, h. including case 35.5 cm  
\*retailed by John Bull & Co., Bedford £200 - £300

**128**

A mixed parcel of collectable's including a faux tortoiseshell necklace, a bone needle holder in the form of a parasol, a silver napkin ring and other items (qty) £20 - £30

**129**

A 19th century burr walnut writing slope with brass mounts and fitted interior, inscribed 'Presented to Annie Hurst by her sincere friend John Constable on her birthday Sept. 23rd 1858', w. 35 cm, together with a further writing slope (2) £60 - £100

**130**

A mixed parcel of collectable spectacles including yellow metal examples, pince nez, plastic rimmed examples and others, together with a selection of papier mache, tortoiseshell and other cases and collectable's (qty) £60 - £100

**131**

A Russian enamelled beaker commemorating the coronation of Nicholas II, h. 10.5 cm  
£100 - £150



Lot 131

**132**

A mixed group of collectable pens and pencils including a silver propelling pencil in the form of a golf tee, l. 6.5 cm, Parker examples and others (qty) £40 - £60



Lot 132

**133**

A set of stone carvings modelled as the three wise monkeys, max h. 9 cm £50 - £80

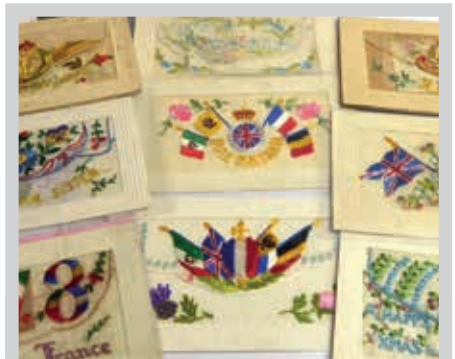
Lot 133

**134**

A mixed group of early 20th century games including Jaques Word Making, Coronet Scoper, card games, figures, viewer and other items (qty) £30 - £40

**135**

A mixed parcel of pens, propelling pencils and other collectable's including a mother of pearl box, a corkscrew and other items (qty) £30 - £50

**136**

Ten WWI silk greetings cards, together with a postcard titled 'Affection' (11) £30 - £40

**137**

An Eastern kukri with bone handle and glass set sheath, l. 41 m £40 - £60

**138**

Of Horse Racing Interest: a silk scarf commemorating the winners of The Derby since the commencement in 1780, 84.5 cm square £40 - £60



**139**

A medal group comprising 1914-1948 War Medal, Victory Medal with oak leaf and WWII Defence Medal, all awarded to A. Cpl. Eric Gwynne Castle Royal Army Medical Corps, together with the War Office certificate, photographs, his diaries from the period, his mother ration books and other items (qty) \*A. Cpl. Eric Gwynne Castle was mentioned in dispatches for distinguished service and devotion to duty in the field, during the period 15th September 1918 to 31st December 1918

£150 - £200

**140**

Of Local Interest: a black and white photograph depicting the R31 airship over Cardington Hangars, 29 x 36.5 cm, a further view of Cardington Hangars, another of the R100 and a historical data sheet, all framed (4) £50 - £80

**141**

An aluminium 'Victory' bell cast using metal from German aircraft shot down over Britain, h. 14 cm, together with a brass dish depicting Freedom House, Korea (2) £30 - £40

**142**

A five glass carriage timepiece of typical form, the white enamel dial with black Roman numerals, retailed by Webster & Co. & Jenner & Knewstubb, h. 11.5 cm £50 - £80

**143**

A five glass carriage timepiece of typical form, the white enamel dial with black Arabic numerals, h. 12 cm £50 - £80

**144**

A replica 8-day lantern timepiece by Smiths, h. 18 cm £60 - £80



Lot 139 (part)





Lot 148

**145**

An anniversary timepiece of typical form, the white enamel dial with black Arabic numerals under a glass dome, overall h. 30.5 cm

£60 - £80

**146**

An early 20th century leather saddle bag embroidered in coloured threads in the Middle Eastern manner

£40 - £60

**147**

An early 20th century spelter three branch candelabrum of urn shaped form, h. 66 cm, together with a similar urn, smaller (2)

£50 - £80



Lot 146



**148**

Of Advertising Interest: a late 19th/early 20th century verre eglomise sign of imposing proportions advertising Gow's Oyster Warehouse, 75 x 412 cm

£1500 - £2000



Lot 149

**149**

Of Advertising Interest: an early/mid 20th century double sided brown patinated bronze sign decorated in pale blue, white and pink enamels and advertising The Royal Bank of Scotland, 83.5 x 60.5 cm  
 \*it is believed that this sign may have hung in the Head Office on St Andrew Square, Edinburgh, but archivists have not been able to confirm this  
 £800 - £1200

**150**

A 19th century Swedish bentwood 'Bridal' box shallow carved with scrolls and zig-zag patterns, w. 47 cm  
 £50 - £80

**151**

A late 19th/early 20th century glass dome and stand, currently housing a later plastic fruit group, overall h. 44 cm  
 £60 - £80

**152**

A group of nine German chocolate moulds in the form of a rifle, a boot, a lion and others by Anton Reiche.(9)  
 £60 - £100



Lot 150

**153**

An early/mid 20th century oil lamp, five items of 19th century pewter table ware and a pair of brass ejector candlesticks (8)  
 £30 - £40

**154**

A Murano pale pink and vaseline glass five branch chandelier of typical form, drop 63 cm  
 £100 - £150

**155**

A Murano pale pink and vaseline glass five branch chandelier of typical form, drop 63 cm  
 £100 - £150



**156**

A Murano pale pink and vaseline glass five branch chandelier of typical form, drop 63 cm  
 £100 - £150

**157**

A 2016 Peter Rabbit 'half whisker' 50p coin, Peter Rabbit in portrait with eleven whiskers, one being half length  
 £20 - £30

**158 - 200**

Spare lots

*Pictures & Prints*





Lot 201

### 201

Jack Leigh Wardleworth (1863-1925),  
A romanticised Elizabethan court scene,  
signed and dated 1891,  
oil on canvas,  
75 x 126 cm £400 - £600

### 202

Fritz B Althaus (Exh. 1881-1914),  
Fisherman at rest on a busy shoreline,  
signed and dated '91,  
watercolour,  
49 x 74.5 cm £60 - £100

### 203

Clement Adams (fl. 1890-1910)  
Cattle by a loch,  
signed,  
oil on canvas,  
49.5 x 75 cm £60 - £100

### 204

Vic Granger (20th century),  
Deer and pheasants in a park setting,  
signed and dated 1998,  
oil on board,  
69 x 101 cm £80 - £120



### 205

Pieter Christian Dommersen  
(Dutch, fl. 1865-1913),  
Fishermen on a stormy coastline,  
signed and dated 1902,  
oil on board,  
29.5 x 39 cm £300 - £400





**223**

Spare Lot



Lot 224

**224**

Edith Carroll (late 19th/early 20th century),  
 A head a shoulders study of a young girl-  
 Pamela,  
 pastels,  
 signed and dated 1909,  
 26.5 x 21.5 cm, oval, in a verre eglomise frame  
*£50 - £80*

**225**

A pair of 19th century hand coloured engravings  
 depicting hunters, max 10 x 17.5 cm *£50 - £80*

**226**

After Laurence Stephen Lowry R.A.  
 (British 1887-1976),  
 'Peel Park',  
 signed in pencil and with the Fine Art Trade  
 Guild blindstamp, coloured reproduction,  
 37 x 75.5 cm \*Artists Resale Rights may be  
 applicable to this lot *£500 - £800*

**227**

Grenville Cottingham R.B.A., R.S.M.A.  
 (1943-2007),  
 The Horse & Groom,  
 signed,  
 watercolour,  
 30 x 19.5 cm *£60 - £100*

**228**

Grenville Cottingham R.B.A., R.S.M.A.  
 (1943-2007),  
 A study of the Benjamin Bowring Transglobe  
 Expedition vessel,  
 signed and dated '82,  
 watercolour,  
 28 x 42.5 cm *£60 - £100*



Lot 226

**229**

In the manner of Henry John Sylvester Stannard, A country landscape, believed to be Northamptonshire, bears signature, watercolour, 36 x 52 cm *£50 - £80*

**230**

William Brown (20th century), An autumnal landscape, signed, watercolour, 26.5 x 38 cm *£40 - £60*



Lot 231

**231**

Violet Clutterbuck (1869-1960), A study of a thatched cottage in a rolling landscape, unsigned, watercolour, 25 x 35.5 cm *£30 - £50*

**232**

David Green (d. 2011), A North Bedfordshire view, unsigned but inscribed verso, watercolour, 31 x 47.5 cm *£120 - £150*

**233**

David Green (d. 2011), 'St Cuthbert's Street, Bedford' signed, inscribed and dated 1979, pen and ink sketch, 25.5 x 33 cm *£30 - £50*

**234**

After Salvador Dali (Spanish, 1904-1989), The centaur, signed and numbered 25/100, limited edition lithographic print, 29 x 22 cm *£100 - £150*

**235**

After Salvador Dali (Spanish, 1904-1989), The Hands of Antaeus, signed and numbered 16/100, limited edition lithographic print, 29 x 22 cm *£100 - £150*

**236**

Michael Elkan (contemporary), 'Skylight', signed in pencil and numbered 1/125, limited edition photograph, 33 x 48 cm *£30 - £50*

**237**

Michael Elkan (contemporary), 'Twilight Freighter', signed in pencil and numbered 1/125, limited edition photograph, 23 x 46 cm *£30 - £50*

**238**

..Bowen (20th century), A study of a girl at rest holding a basket of flowers, signed in red, oil on board, 16 x 11 cm *£30 - £40*

**239**

A 19th century head and shoulders portrait miniature depicting a bearded gentleman wearing a black suit, 7.5 x 5.5 cm, oval, together with a stipple engraving (2)

**240**

John Rennie (late 19th/early 20th century), 'Bowl of Flowers', signed on reverse of picture, watercolour, 49.5 x 36 cm *£40 - £60*

**241 - 280**

Spare Lots

# W&H PEACOCK

AUCTIONEERS & VALUERS

**TO BE SOLD BY AUCTION**

## Thursday 25th April

### Architectural Salvage and Bygones

Commencing at 10.30am



A specialist sale to include subject to delivery Agricultural Bygones, Vintage Memorabilia, Automobilia, Architectural Salvage and Horticultural and many other vintage items

**Viewing: Wednesday 24th April 9am to 8pm and morning of sale from 9am**

**AUCTION ENTRIES INVITED**

**St Neots Auction Centre**

75 New Street, St Neots, Cambridgeshire PE19 1AJ

01480 474 550 or [sn@peacockauction.co.uk](mailto:sn@peacockauction.co.uk)

**[www.peacockauction.co.uk](http://www.peacockauction.co.uk)**



*Orientalware and other  
Ceramics & Glass*



## Orientalware and other Ceramics & Glass

**281**

A Chinese brass 'singing' bowl decorated with a stylised dragon on a carved stand, d. 29.5 cm  
£30 - £40

**282**

A modern Chinese sang de boeuf vase of baluster form, h. 34 cm on a hardwood stand  
£80 - £120

**283**

A pair of 19th century Chinese Export papier mache fans of scalloped form gilt decorated with traditional landscapes on turned handles, l. 38 cm  
£100 - £150

**284**

A carved figure modelled as the Buddha in meditation, h. 40 cm  
£100 - £150

**285**

A pair of Japanese Kinjo China two handled covered vases decorated in the European manner with landscapes and floral bouquets on a blue ground, h. 38.5 cm  
£30 - £50

**286**

A Japanese metalware vase of shouldered ovoid form decorated with a song bird and lily, h. 18 cm, together with a carved knife handle and a small sun dial (3)  
£40 - £60

**287**

A pair of modern Chinese tea bowls of slightly flared form decorated in a plain pale green crackle glaze, painted six character mark to base, d. 9 cm  
£50 - £80



Lot 283



Lot 288



### 292

A set of three modern coloured reproductions showing the journey of the ceramics craft, each 26.5 x 23 cm (3) £10 - £20

### 288

An early Chinese shallow dish of unusual circular form, decorated in a plain celadon crackle glaze, d. 14 cm, together with a similar shallow saucer (2) £400 - £500

### 289

A Chinese painting on pith paper depicting butterflies and blossoming branches, 17.5 x 24.5 cm, together with a similar work of two birds sharing an insect, larger and an early 20th century Japanese woodblock depicting an egret resting on a branch (3) £100 - £150

### 293

A Chinese provincial blue and white ginger jar decorated with a typical fishing landscape, h. 15.5 cm, together with four further jars, smaller (5) £40 - £60

### 294

A silk scroll decorated with Chinese calligraphy £30 - £50

### 295

A modern abalone and mother of pearl-type serving tray of canted rectangular form, w. 33 cm, boxed, together with a crackle glazed teapot (2) £40 - £60

### 296

A Japanese Imari shallow dish decorated with bats, birds and flowering shrubs within a rust border, Hichosan Shinpo, d. 24 cm, a Kutani dish depicting a lake scene by Koshida, four further Japanese dishes and a Kutani tea cup and saucer(qty) £60 - £100

### 297

A carved wood netsuke in the form of a seated skeleton holding a gourd, signed bone inlay, h. 5 cm, a similar netsuke in the form of a dragon, a two section toad inro, l. 8 cm, a four section bone inro and various other modern netsukes and collectable's (qty) £150 - £200

### 298

A set of three blue and white stoneware dishes decorated in an 'onion' type pattern, d. 17 cm, four further modern blue and white dishes and three items of Imari (qty) £40 - £60

### 299

A Japanese satsuma vase of shouldered form decorated with geisha within a green ground h. 47.5 cm £30 - £50

### 300 - 340

Spare lot



Lot 290

### 290

A terracotta bust modelled as the Buddha on a hardwood stand, overall h. 25.5 cm £80 - £120

### 291

A mixed group of carved Oriental stands, various sizes (qty) £120 - £150



Lot 341

**341**

A late 19th/early 20th century continental porcelain figure modelled as Artemis and a deer, h. 37 cm  
£120 - £150



**343**

A set of six Limoges coffee cans and saucers, gilt decorated on a white ground \*retailed by Mappin & Webb £20 - £30

**344**

A set of three 19th century tea cups and saucer dishes, all gilt decorated on a blue and white ground, a pair of matching dishes and a slop bowl, together with a Copeland Imari side plate and two further side plates (12) £30 - £50

**345**

A Royal Crown Derby six sitting tea service comprising six cups, six saucers, a sugar bowl and a cream jug (14) £30 - £40



Lot 343

**346**

Moyr Smith for Mintons, a set of four tiles from the Shakespeare series comprising Cymbelint II, Macbeth V VIII, Macbeth III IV and Hamlet I I, tiles approx. 15 x 15 cm, framed (4) £100 - £150

**347**

Moyr Smith for Mintons, a set of four tiles from the Waverley series comprising Old Mortality, Guy Mannering, The Talisman and Bride of Lammermoor, 20.5 x 20.5 cm, together with a further unrelated tile (5) £100 - £150



Lot 347





Lot 348

### 348

A pair of late 19th/early 20th century porcelain plaques of oval form each hand decorated with a full length cavalier, each 41 x 18 cm £30 - £40

### 349

A mid-20th century cut glass vase of campanula form on a square base, h. 34 cm, together with a similar vase and water jug (3) £40 - £60

### 350

A Royal Crown Derby miniature two handled vase of elongated hexagonal form, typically decorated in the Imari palette, h. 17.5 cm, together with a further Derby vase and shallow dish (3) £50 - £80

### 351

A Staffordshire flatback figural group modelled as a dandy and his female companion, h. 39 cm, together with six similar figures (7) £150 - £200

### 352

A modern Delft model in the form of a violin, l. 49 cm, a nodding figure and five further items of ceramics (7) £50 - £80

### 353

A Worcester style figural table lamp base, h. 20.5 cm, a modern pottery figure of a parrot and a Spode dish (3) £50 - £80



### 354

A Swarovski Crystal Society figure modelled as 'Cinta' the elephant, h. 11 cm, together with a model of a lotus flower, boxed £200 - £250

### 355

A Swarovski Crystal Society figure modelled as 'Paikaea' the whale, h. 16 cm, together with a model of a wave, boxed £200 - £250

### 356

A Swarovski Crystal Society figure modelled as 'Siku' the polar bear, h. 7.5 cm, together with a model of an iceberg, boxed £200 - £250

### 357

A Swarovski Winnie the Pooh figure modelled as Tigger, h. 10.5 cm, boxed £100 - £150

### 358

A Swarovski Winnie the Pooh figure modelled as Eeyore, h. 6.5 cm, boxed £150 - £200

### 359

A Swarovski Winnie the Pooh figure modelled as Pooh holding a balloon, h. 11 cm, boxed £100 - £150



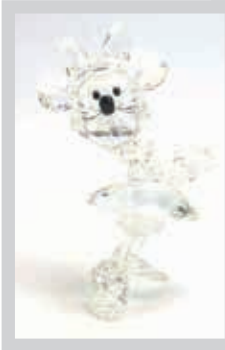
Lot 359

**360**

A Swarovski Disney Showcase figure modelled as Mickey Mouse with outstretched arms, h. 10 cm, boxed  
 £100 - £150

**361**

A Swarovski Disney Showcase figure modelled as Pluto, h. 10 cm, boxed  
 £100 - £150

**362**

A Swarovski Disney Showcase figure modelled as Minnie Mouse, h. 10.5 cm, boxed  
 £100 - £150

**363**

A Swarovski Disney Showcase figure modelled as Donald Duck, h. 9.5 cm, boxed  
 £100 - £150

**365**

A Doulton Lambeth Carrara ware vase of bellied form, the body with a pierced band and decorated with flowering shrubs on an blush ivory ground, Edith Lupton, h. 18 cm  
 £80 - £120



Lot 366

**364**

A Swarovski Disney Showcase figure modelled as Daisy Duck, h. 8.5 cm, boxed (af)  
 £100 - £150



Lot 365

**366**

A Doulton Lambeth stoneware vase of baluster form relief decorated with stylised flowerheads and scrolls on a mottled green ground, George Tinworth, h. 32 cm  
 £200 - £250

**367**

A Royal Doulton vase of baluster form relief decorated with stylised flowers on a mottled green ground, Bessie Newbury, h. 33 cm  
 £60 - £100

**368**

A Macintyre tea bowl decorated with a crest, a thistle, clover and a Tudor rose, d. 7.5 cm, a Cantonese tea bowl and a Derby-style spill vase (3)  
 £30 - £50

**369**

A Doulton Lambeth stoneware jug 'The More, The Merrier', h. 16.5 cm, together with a further Lambeth jug, smaller (2)  
 £60 - £100



Lot 370

**370**

A Nailsea-type green glass vase of shouldered form, 25 cm  
 £40 - £60



**371**

A set of three graduated Beswick wall plaques in the form of seagull's, Model no. 658, max w. 35 cm  
 £40 - £60

**372**

A tin glazed terracotta dish of oval form decorated with blue flowerheads on a white ground, w. 33 cm (af)  
 £20 - £30

**373**

A Moorcroft miniature vase of ovoid form decorated with anemone on a shaded yellow/green ground, h. 9.4 cm, Queen Mary label to base  
 £40 - £60



Lot 374

**374**

A pair of large scale Amphora shot enamel-type figures modelled as a nymph and her male companion, max h. 62 cm  
 £200 - £300

**375**

A large scale Amphora shot enamel-type figure modelled as a female water carrier, h. 61 cm  
 £80 - £120

**376**

A Venetian white and pink glass six branch electrolier, together with a pair of matching wall lights (3)  
 £100 - £150

**377**

A modern Moorcroft vase of shouldered form decorated with stylised flowers on a dark blue ground, h. 15.5 cm  
 £40 - £60

**378**

A modern Moorcroft timepiece of rectangular form, decorated with stylised lilies on a cream ground, h. 6 cm, boxed *£40 - £60*



Lot 379

**379**

A Royal Dux figure modelled as a resting goat, h. 16.5 cm *£20 - £30*

**380**

A Worcester-style canework vase in the form of four stacked jars, h. 17 cm, together with a similar basket modelled as a young girl and lamb (2) *£40 - £60*

**381**

A pair of acid etched tankards decorated with wild animals, together with a similar tankard, max h. 22 cm *£60 - £80*



Lot 381

**382**

A pale yellow table lustre, a group of pale pink vaseline glass epergne flutes and canes, a Mary Gregory-type bowl, a flared vase and two items of cranberry glassware (qty) *£40 - £60*



**383**

A pair of Derby-style shallow bowls decorated with floral sprays within a blue border, d. 25.5 cm *£30 - £40*

**384 - 400**

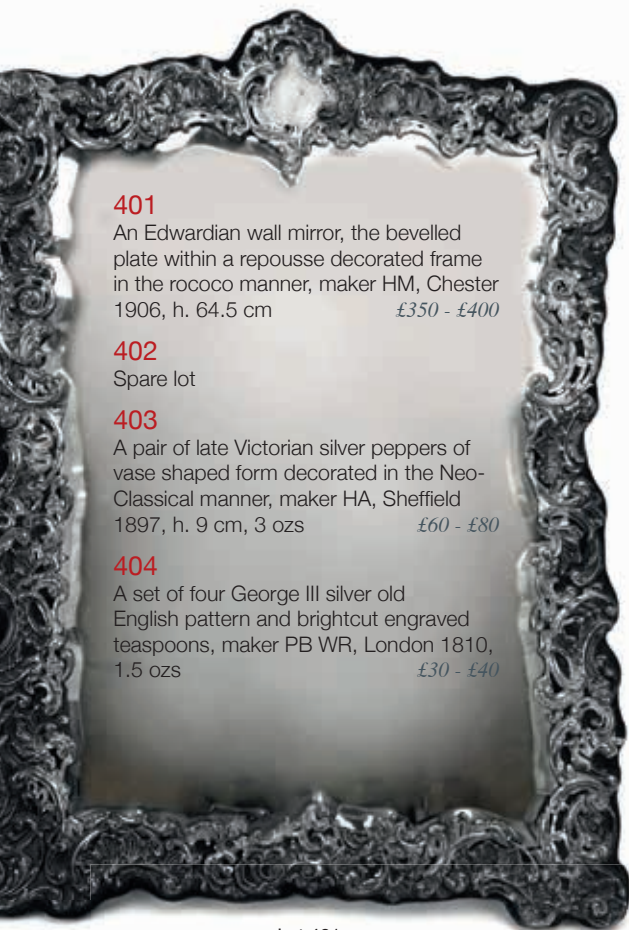
Spare Lots



*Silver & Plate*



## Orientalware and other Ceramics & Glass



### 401

An Edwardian wall mirror, the bevelled plate within a repoussé decorated frame in the rococo manner, maker HM, Chester 1906, h. 64.5 cm *£350 - £400*

### 402

Spare lot

### 403

A pair of late Victorian silver peppers of vase shaped form decorated in the Neo-Classical manner, maker HA, Sheffield 1897, h. 9 cm, 3 ozs *£60 - £80*

### 404

A set of four George III silver old English pattern and brightcut engraved teaspoons, maker PB WR, London 1810, 1.5 ozs *£30 - £40*

Lot 401

### 405

A Victorian silver and parcel gilt apostle sifting spoon, maker HH, London 1878, l. 16 cm, together with a silver and engraved vesta case, overall 2 ozs (2) *£30 - £50*

### 406

A set of six Polish silver teaspoons in the Art Nouveau manner, maker WWS, together with five further silver and metalware teaspoons, various dates and makers, overall 4.5 ozs (11) *£30 - £40*

### 407

A mixed parcel of silver comprising two napkin rings, two vesta cases, a cheroot and a cheroot holder, various dates and makers, overall 4.5 ozs (6) *£60 - £100*

### 408

Four Scottish silver fiddle pattern teaspoons, a mixed parcel of silver and metalware salt, tea and souvenir spoons and a silver lidded dressing table container, various dates and makers, weighable silver 4.5 ozs (qty) *£40 - £60*

### 409

A set of six Egyptian metalware bowls, each engraved with acanthus leaf decorated, d. 12 cm, 21 ozs *£120 - £150*

Lot 407





Lot 409

**410**

A mixed parcel of silver comprising two pill boxes, a vesta case, two salts, two salt spoons and a dressing table container, various dates and makers (8) £50 - £80



**411**

An Edwardian silver caddy of oval form having tied borders and reeded decoration, maker CH, Birmingham 1906, h. 9.5 cm, 5 ozs £60 - £100

**412**

An early 20th century shallow silver dish of circular form with rococo design border, import marks, d. 15 cm, 5.5 ozs £60 - £100

**413**

An early 20th century silver bowl of circular form on a reeded foot, maker RWB, London 1939, retailed by Harrods, d. 18 cm 14 ozs £150 - £200

**414**

A pair of silver spill vases of fluted form, the bases decorated with heart shaped leaves, Walter Edward King, London 1975, h. 13.5 cm, 4 ozs £60 - £100



Lot 415

**415**

A pair of late 20th century silver candlesticks of column form, maker BC, London 1981, h. 16.5 cm, 5 ozs £80 - £120

**416**

A silver mounted moulded glass sugar sifter, maker RR, London 1938, h. 15.5 cm £30 - £40

**417**

A pair of modern silver tealight stands of plain circular form, maker ET, London 1993, d. 8.5 cm, 5.5 ozs £60 - £100

**418**

Two metalware pill boxes of oval form set abalone and purple glass, max w. 3 cm (2) £30 - £40



Lot 418



**419**

A silver and parcel gilt salt of shaped circular form, import marks, d. 6.5 cm, a silver cream jug and a silver salt on a square foot, various dates and makers, weighable silver 2 ozs (3) £50 - £80

**420**

A small silver sugar bowl of circular form raised on a socle foot, Mappin & Webb, Sheffield 1945, d. 7 cm, 3 ozs £30 - £40

**421**

A modern silver stand of circular form within a beaded border, maker ET, London 1993, d. 12 cm, together with four similar egg stands by a different maker, overall 7.5 ozs (5) £80 - £120

**422**

A set of four hammered silver sundae spoons, Walter Edward King, London 1965, l. 18.5 cm, together with three similar silver teaspoons, overall 4 ozs (7) £50 - £80

**423**

A hammered silver caddy spoon in the Arts & Crafts manner, maker ET, London 1998, l. 9.5 cm, together with a further caddy spoon and three other spoons, various dates and makers, overall 2.5 ozs (5) £30 - £40

**424**

A set of six hammered silver teaspoons with stylised relief decorated ends in the Arts & Crafts manner, maker SP, London 2004, together with a similar spoon, overall 3.5 ozs (7) £50 - £80

**425**

A modern silver bark design napkin ring depicting the letter M or W, maker SP, London 1991, together with four further silver napkin rings, various dates and makers, overall 4 ozs (5) £50 - £80

**426**

Spare Lot

**427**

A late Victorian silver bread fork, the handle repousse decorated in the Neo-Classical manner, maker WG&S, Sheffield 1898, l. 21 cm £30 - £40

**428**

Spare Lot

**429**

A George IV Irish silver fiddle pattern ladle, Thomas Farnett, Dublin 1825, l. 35 cm, 10 ozs £120 - £150



Lot 430

**430**

An early 20th century Anglo-Indian metalware teapot of vase shaped form repousse decorated and engraved with traditional harvest scenes, h. 15 cm, 22 ozs £100 - £150

**431**

A early 20th century silver sugar bowl, maker EH, Birmingham 1936, a matching cream jug and a later pair of nips, in a fitted case £50 - £80



Lot 425



**432**

An early 20th century silver teapot of canted boat shaped form, Elkington & Co., Birmingham 1944, 16 ozs *£100 - £150*



Lot 432

**433**

A silver goblet or traditional form, maker BES Co., Birmingham 1971, h. 11.5 cm, together with a silver egg cup and spill vase, weighable silver 6 ozs *£50 - £80*

**434**

On behalf of British Airways and Air France, a silver ingot commemorating the inauguration of the Concorde on 21st January 1976, maker Yorkshire Mint, Birmingham 1976, w. 6.5 cm, 1.5 ozs, cased with with certificate numbered 1474 *£30 - £50*

**440**

A pair of Georgian silver and bright cut engraved sugar nips, maker IL, a Scottish silver Kings pattern teaspoon, Edinburgh 1832 and a small silver handled magnifying glass (3) *£40 - £60*

**435**

Three silver and metalware mounted dressing table bottles, various dates and makers, max h. 11 cm, together with a metalware snuff phial (4) *£50 - £80*

**436**

John Pinches for the Royal Geographical Society, a silver map of the world, London 1976, image 37 x 55.5 cm, framed and glazed *£60 - £100*



Lot 441

**437**

A silver mounted moulded glass pepper grinder, maker JBC&S Ltd., Birmingham 1983, h. 11 cm *£40 - £60*

**441**

An Edwardian silver and parcel gilt lidded caddy of sarcophagus form on four outswept feet, Walker & Hall, Sheffield 1907, h. including handle 10.5 cm, 4.5 ozs *£140 - £160*

**438**

A George III silver old English pattern caddy spoon, maker EM, London 1805, l. 8 cm *£50 - £80*

**439**

A George IV silver caddy spoon with engraved scuttle bowl and ivory handle, maker JC, Birmingham 1825, l. 11 cm *£50 - £80*



Lot 439

**442**

A silver, engine turned and pale pink enamelled three piece dressing table set, London 1935, together with a further silver backed hair brush and hand mirror (5) *£40 - £60*



Lot 443

**443**

A silver paper knife with fleur de lis end commemorating the Royal Wedding in 1981, maker PS Ltd., Sheffield 1981, l. 18.5 cm, 2 ozs  
£30 - £40

**444**

A small capstan-type inkwell, d. 8.5 cm, a silver and parcel gilt scent bottle and a silver mounted cut glass scent bottle, various dates and makers (3)  
£30 - £40

**445**

A silver engine turned money clip, six silver bean end coffee spoons and a silver mounted horn napkin ring, various dates and makers, together with a silver plated chatelaine and accessories (qty)  
£30 - £40

**446**

A metalware mounted photograph frame of rectangular form, stamped 'Raimond Sterling', h. 25.5 cm, together with a small silver mounted desk frame (2)  
£30 - £50

**447**

A pair of silver dwarf candlesticks of columnar form on canted square plinth bases, James Dixon & Sons, Sheffield 1906, h. 10.5 cm, loaded  
£40 - £60



Lot 449

**448**

A pair of silver dwarf candlesticks of slender knopped form on hexagonal plinth bases, maker S&M, Birmingham 1967, h. 18. cm, loaded  
£40 - £60

**449**

A silver mounted desk timepiece, the quartz movement within a repousse decorated frame, maker KF Ltd., London 1990, h. 16 cm  
£40 - £60

**450**

A Royal Mint silver proof £1 coin dated 1985, cased, together with a Jubilee Mint silver proof £1 coin commemorating Queen Elizabeth II as the longest reigning monarch (2)  
£20 - £30

**451**

A pair of Edwardian silver two handled salts of vase shaped form, maker CC, Chester 1907, h. 4 cm, 2 ozs (2)  
£30 - £40



Lot 452

**452**

A late Victorian pierced silver two handled cup with blue glass liner, hound handles and a foliate lattice work body on four paw feet, SBL, London 1897, h. 11 cm, 5 ozs  
£120 - £150

**453**

A metalware sugar bowl of circular form with gadrooned decoration on a socle foot, stamped 'silver', d. 10.5 cm, 4 ozs  
£50 - £80

**454**

Seven silver and metalware mounted dressing table containers and a silver handled button hook, various dates and makers (8)  
£50 - £80



Lot 455

**455**

An early 20th century cut glass claret jug of typical form with silver plated mounts, h. 30.5 cm £30 - £40

**456**

A small early 20th century silver cigarette case of cushioned rectangular form with foliate engraving, maker JG Ltd., Birmingham 1917, l. 7.5 cm, 1 ozs £30 - £40



Lot 459



Lot 456

**457**

An Edwardian silver mounted porcelain scent bottle of heart shaped form decorated with an Oriental beauty, Birmingham 1904, h. 5.5 cm £40 - £60



Lot 457

**458**

A Venetian pale blue and gilt decorated glass scent phial of teardrop form, l. 8 cm, a late 19th/early 20th century metalware mounted green glass double ended scent bottle and another similar clear glass example (3) £50 - £80



Lot 458

**459**

An Egyptian metalware cigarette box of rectangular form w. 12.5 cm, together with a pink gillouche enamelled cigarette case (2) £40 - £60



**460**

Two pairs of metalware salts and peppers of ovoid form, h. 6 cm and a small oval tray, all stamped 'Sterling', overall 5 ozs (5) £40 - £60

**461**

A set of six metalware cake forks with elephant ends and six matching butter knives, each stamped 'Sterling' and contained in two cases, overall 7 ozs £50 - £80

**462**

A group of silver plated items including a small galleried tray, a sugar dredger and other items (qty) £40 - £60



Lot 463

**463**

An early 20th century novelty silver pin cushion in the form of a shoe with an oak sole, S Blanckensee & Son Ltd., Birmingham 1921, toe to heel measures 12.5 cm £120 - £150

**464 - 600**

Spare Lots

*Forthcoming Auctions*

**Spring Sale of Sporting Guns & Antique Arms**

Thursday 14th March 2019 - Bedford Auction Centre

**CATALOGUE NOW ONLINE**

**Books, Maps & Ephemera**

Friday 5th April 2019 - Bedford Auction Centre

**ENTRIES NOW INVITED**

**Collectable & Vintage Toys**

Friday 3rd May 2019 - Bedford Auction Centre

**ENTRIES NOW INVITED**

**Vintage & Modern Wines & Spirits**

Saturday 4th May 2019 - Bedford Auction Centre

**ENTRIES NOW INVITED**

**Mid Century Design**

Saturday 18th May 2019 - Bedford Auction Centre

**ENTRIES NOW INVITED**

**[www.peacockauction.co.uk](http://www.peacockauction.co.uk)**



# W&H PEACOCK

AUCTIONEERS & VALUERS

## Valuation Days

**Friday 8th, 29th March**

10.00am - 3.00pm

If you have an individual item or a collection that you are thinking of selling we would be delighted to provide complimentary valuation advice at one of our scheduled events. Alternatively, you may prefer to email us an image of your collection or treasures, or ring us to arrange a house visit by one of our specialists.



**Auction Entries Invited**

Bedford Auction Centre,  
Eastcotts Park, Wallis Way, Bedford, MK42 0PE  
01234 266 366 or [info@peacockauction.co.uk](mailto:info@peacockauction.co.uk)

**[peacockauction.co.uk](http://peacockauction.co.uk)**

**W&H PEACOCK**  
AUCTIONEERS & VALUERS

**Antique & Collectors' Items**  
**Valuation Day**

**Saturday 4th May 2019**

Commencing 10am – 3pm

**AT**

**POPLARS GARDEN CENTRE**

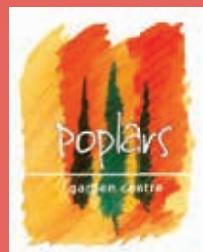
Harlington Road, Toddington, Dunstable, Bedfordshire LU5 6HE

01525 872017 [www.poplars.co.uk](http://www.poplars.co.uk)

**NO APPOINTMENT NECESSARY.**

Bring along items for FREE auction advice without obligation. Our team of valuers are happy to advise on all Antique Furniture, Pictures, Ceramics & Glass, Silver, Metalware, Boxes and Caddies, Militaria, Books & Ephemera, Wine & Spirits, Collectable Toys, Mid Century Design, other Collector's Items, Watches & Jewellery.

**Auction Entries Invited**  
**[peacockauction.co.uk](http://peacockauction.co.uk)**



*Jewellery & Watches*



## Jewellery & Watches

**601**

A 9ct yellow gold mounted cameo brooch of oval form depicting a classical female figure head and shoulders, l. 4 cm  
*£30 - £40*



Lot 602

**602**

A 9ct yellow gold hinged bracelet set seven diamonds in recessed star settings within an engraved ground, internal w. 5.9 cm, 15.8 gms  
*£200 - £300*

**603**

An early 20th century platinum ring set diamond in a raised six claw setting, stone approximately 0.5 carats, ring size O, 3.6 gms  
*£400 - £600*



Lot 603

**604**

An early 20th century 9ct yellow gold bar brooch in the form of a song bird, together with a similar bar brooch, overall 3.3 gms  
*£20 - £30*

**605**

A 14ct yellow gold ring centrally set with six small diamonds in a flowerhead setting within an articulated 'halo' surround, ring size M, 3.4 gms  
*£150 - £200*



Lot 606

**606**

A Chinese yellow metal ring set baguette cut emerald in a rubover setting, ring size K, 7.7 gms  
*£250 - £300*

**607**

Sixteen loose oval cut emeralds, varying colour and size, approximate total weight 55 carats  
 \*with certification  
*£80 - £120*

**608**

An 18ct white gold ring set three princess cut diamonds in a square shaped setting, ring size K, 4.5 gms (af)  
*£300 - £400*

**609**

A modern silver brooch in the form of an articulated frog, l. 7.3 cm, a modern silver expanding beaded necklace and a butterfly wing pendant necklace (3)  
*£20 - £30*

**610**

A 9ct yellow gold ring set five pink and clear stones in a rectangular setting, hallmarked for Birmingham 1993, ring size R 1/2, 2.2 gms  
*£20 - £30*



Lot 611

**611**

An 18ct yellow gold ring pave set small diamonds in a v-shaped setting within a reeded band, ring size M, 5.5 gms  
*£100 - £150*



Lot 612

**612**

A pair of white metal wedding bands, each set three small diamonds, ring sizes Y and Q, overall 11.3 gms  
*£200 - £300*



**613**

A single strand continuous cultured Tahitian pearl necklace with gold plated clasp, pearl d. 7 mm, l. 56 cm, together with a pair of matching ear studs *£150 - £200*

**614**

An 18ct white gold brooch of openwork swept design set small diamond, w. 3.7 cm, 4.7 gms *£80 - £120*

**615**

A gentleman's 18ct yellow gold ring set two rows of small diamonds within a reeded band, ring size X, 12.6 gms *£350 - £400*



Lot 615

**616**

A 9ct yellow gold half eternity ring set sapphires and cubic zirconia, ring size L, 1.3 gms *£30 - £40*

**617**

A single strand continuous cultured pearl necklace with 18ct white gold clasp set rubies and diamonds in an openwork setting, pearls measure approximately d. 7 mm, l. 51 cm *£180 - £220*

**618**

An 18ct white gold ring set oval dark green/blue stone in a raised four claw setting, the openwork shoulders each set three small diamonds (one missing), ring size L 1/2, 3.1 gms *£40 - £60*

**619**

A yellow metal ring set three small diamonds within a twisted branch design setting, ring size H, 4.9 gms *£180 - £220*



Lot 620

**620**

An 18ct yellow gold ring set three graduated diamonds in a raised inline setting, central stone approximately 0.25 carats, ring size M 1/2, 3.1 gms *£350 - £450*

**622**

An 18ct yellow gold ring set three graduated diamonds, ring size P, 2 gms *£80 - £120*

**623**

A 9ct two colour band ring inset three small diamonds, ring size L, 3.2 gms *£50 - £80*

**624**

A 9ct yellow gold fringe necklet suspending nine graduated garnets, each beneath a small pearl, l. 41 cm, together with a pair of screw-type earrings and a similar ring, overall 19.1 gms (4) *£150 - £200*

**625**

A George Tarratt silver brooch of stylised foliate form, hallmarked for Birmingham 1961, w. 2.9 cm, together with a pair of matching screw-type earrings, with original card box *£30 - £40*

**626**

A 19th century-style brooch of oval form set amethyst within a border of small pearls, hallmarked for London 1983, w. 2.3 cm, 7.2 gms *£80 - £120*



Lot 627

**627**

A silver brooch in the form of a floral spray set three graduated cultured pearls, w. 4.5 cm *£20 - £30*

**628**

A 9ct yellow gold ring set five graduated oval garnets in a wide setting, ring size O, 4.3 gms *£30 - £40*

**629**

A 9ct white gold bar brooch set small pearls in the form of branch, w. 5 cm, 4.7 gms *£30 - £40*

**630**

A pair of two colour ear studs of knot design,  
overall 1.2 gms £20 - £30

**631**

An 18ct yellow gold ring set five graduated  
diamonds in an openwork setting, hallmarked  
for Chester 1913, ring size M, 3.3 gms  
£80 - £120

**632**

An 18ct yellow gold ring  
set brilliant cut diamond  
in a four claw setting,  
stone approximately  
0.5 carats, ring size M  
1/2, 2 gms £250 - £300



Lot 632

**633**

An early 20th century 18ct yellow gold ring set  
diamond and two emeralds in rubover settings,  
ring size K, 1.6 gms £60 - £100

**634**

A mottled green carved jade-type bangle,  
internal d. 5.8 cm, together with a pair of Indian  
yellow metal bangles with pierced decoration  
and set white and pink glass, internal d. 6.5 cm  
(3) £50 - £80

**635**

An Eastern cuff bracelet inset semi-precious  
stones including lapis lazuli, turquoise and  
others, internal d. 6.3 cm £30 - £40

**636**

A gold plated articulated link bracelet, stamped  
18k £150 - £200

**637**

A gold plated s-link necklace suspending a 9ct  
yellow gold swivel fob set citrine, fob w. 2.6 cm  
£30 - £40

**638**

An 18ct yellow gold bar brooch set three  
diamonds and two small pearls, w. 5.3 cm,  
3.1 gms £60 - £100

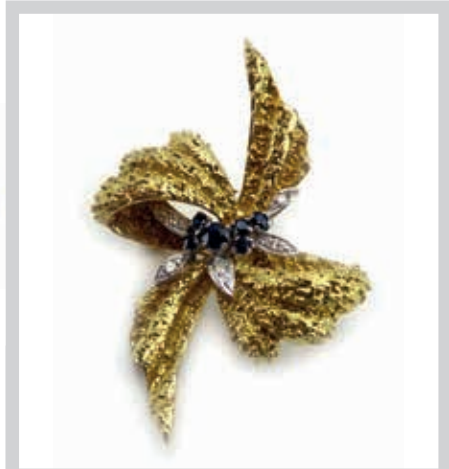
**639**

Spare Lot

Lot 638

**640**

A silver and florally engraved hinged bracelet,  
hallmarked for Birmingham 1961, internal  
w. 6.4 cm £20 - £30

**641**

An 18ct yellow gold brooch in the form of a  
bow and set sapphires and diamonds,  
w. 3.9 cm, 16.1 gms £300 - £400

**642**

A 15ct yellow gold bar brooch set circular green  
coloured stone, w. 6.5 cm, 3.9 gms £50 - £80

**643**

A single strand cultured pearl necklace with  
silver and marcasite set clasp, largest pearl  
d. 8 mm. l. 40 cm £40 - £60

**644**

A 9ct yellow gold dress ring set oval cabochon  
garnet in an eight claw setting, ring size R 1/2,  
5.1 gms £50 - £80

**645**

A 9ct white gold wedding band with chevron  
engraved decoration, hallmarked for London  
1978, ring size M, 3.2 gms £40 - £60

**646**

A 9ct two colour gold slider pendant of leaf  
shaped design set small diamond, l. 17 cm,  
2.1 gms £30 - £40

**647**

A late 19th century 15ct yellow gold ring set oval yellow garnet in a raised ten claw setting within engraved shoulders, hallmarked for Chester 1898, ring size T, 5 gms

£100 - £150



Lot 647



Lot 652

**648**

Spare Lot



Lot 649

**652**

A 9ct yellow gold brooch of flowerhead form set centrally with a sapphire in a surround of six pearls and small diamonds, Birmingham 1988, d. 2.5 cm, 6.2 gms

£200 - £300

**649**

A platinum ring set princess cut diamond in a four claw setting, stone approximately 0.33 carats, ring size I, 4.1 gms

£150 - £200



Lot 650

**653**

A 9ct yellow gold brooch of flowerhead form set seven oval opals interspersed with small sapphires, d. 2.5 cm, 4.4 gms

£80 - £120

**654**

A yellow metal brooch of in the form of a crescent moon and set small graduated sapphires, w. 2.4 cm, 3.3 gms

£60 - £80

**655**

An 18ct yellow gold brooch in the form of a crescent moon and set four small rubies interspersed with three diamonds, Sheffield 1995, w. 2.6 cm, 3.8 gms

£200 - £300

**650**

A 14ct white gold cluster ring set oval cut Zambian emerald within a border of small diamonds, stone measure approximately 7 x 6 mm, ring size N 1/2, 4.3 gms

£300 - £400

**651**

A 9ct yellow gold brooch of diamond shaped form set garnets, w. 2.5 cm, 3.4 gms

£40 - £60



Lot 656



Lot 653

**656**

A pair of 18ct yellow gold ear studs of cuff design and set small princess cut diamonds and sapphires, l. 2 cm, 11.9 gms

£250 - £300



Lot 655

**657**

A pair of 9ct yellow gold ear studs set garnets and pearls in a flowerhead setting, 1.5 gms, together with a similar pair of silver gilt earrings (2 pairs) *£50 - £80*

**658**

A pair of 18ct two colour gold ear clips of cuff design, each set three small diamonds, l. 1.6 cm, 5.6 gms, together with a similar pair of yellow metal ear studs set diamonds, 6.2 gms (2 pairs) *£100 - £150*

**659**

An 18ct yellow gold ring set oval opal in a surround of small diamonds, Birmingham 1978, ring size Q 1/2, 3.7 gms *£60 - £80*

**660**

A platinum ring set three princess cut diamonds in an in-line setting, ring size K, 5.8 gms *£300 - £400*



Lot 660

**661**

A platinum wedding band, maker B&N, retailed by Mappin & Webb, ring size K 1/2, 6 gms band w. 3 mm *£120 - £150*



Lot 661

**662**

Two 22ct yellow gold wedding bands, ring sizes M 1/2 & P 1/2, 11.3 gms (2) *£220 - £250*

**663**

Two 18ct yellow gold and platinum highlighted rings, each set small diamonds in illusion settings, ring sizes N 1/2 & P 1/2, 5.6 gms (2) *£80 - £120*



Lot 664

**664**

A 9ct yellow gold engine turned vesta case of square form, maker FF, Birmingham 1922, w. 4.6 cm, 34.1 gms *£350 - £400*



Lot 665

**665**

A 9ct yellow gold engine turned vesta case of cushioned rectangular form, maker B&S, Birmingham 1925, w. 3.6 cm, 23.5 gms *£350 - £400*

**666**

An 18ct yellow gold and platinum highlighted ring set three graduated diamonds, ring size N, 2.8 gms *£150 - £200*



Lot 667

**667**

A 19th century style 18ct yellow gold ring set ruby and two diamonds interspersed with four smaller diamonds in a scrolled setting, London 1990, central stone approximately 0.5 carats, ring size K, 3.3 gms *£400 - £500*

**668**

An 18ct yellow gold wedding band, maker CG&S, Birmingham hallmark indistinct, ring size K 1/2, 2.4 gms, band w. 2 mm *£30 - £40*



**669**

A pair of 9ct yellow gold florally engraved oval cufflink's, Birmingham 1989, 5.8 gms £50 - £60

**670**

A 9ct yellow gold curb link bracelet suspending an 18ct yellow gold charm in the form of a cow bell and a 9ct bean charm, overall 15.8 gms  
£120 - £150

**671**

A 9ct yellow gold elongated link necklace suspending an Edwardian 9ct yellow gold openwork pendant set garnets and small pearls, pendant w. 3.1 cm, overall 4.4 gms £100 - £150

**672**

Three 9ct yellow gold necklaces of varying styles, overall 23.1 gms (3) £200 - £250

**673**

A 9ct yellow gold chain link necklace suspending a 9ct yellow gold cross shaped pendant set small diamonds, overall 12.8 gms £100 - £150

**674**

A 14ct yellow gold band ring set eight cubic zirconia, ring size O, 4 gms £50 - £80

**675**

An 18ct two colour gold wedding band with beaded decoration, maker B Bros., London 2000, ring size O 1/2, 4.5 gms band w. 5 mm  
£70 - £90

**676**

An 18ct yellow gold cluster ring set nine diamonds in a raised setting, central stone approximately 0.25 carats, ring size O, 2.2 gms

£300 - £350



Lot 676

**677**

Three 18ct yellow gold cluster rings set sapphires and diamonds, together with an 18ct yellow gold ring set five oval rubies interspersed with small diamonds in an in-line setting, various sizes, overall 11.3 gms (4) £200 - £300

**678**

Nine 9ct yellow gold rings including wedding bands, dress rings set coloured stones etc., various sizes, overall 17 gms £150 - £200



Lot 679

**679**

A 14ct yellow gold ring set brilliant cut diamond in a raised square shaped setting, stone approx 0.75 carats, ring size M, 2.2 gms £800 - £1000



**680**

A Chinese yellow metal clip relief decorated with figures at leisure, w. 3.6 cm, 5.4 gms  
£80 - £120

**681**

A mixed parcel of jewellery comprising a lapis lazuli bead necklace with 9ct yellow gold clasp, a pair of matching ear studs, four further pairs of earrings, a t-bar and a miniature shovel (qty)  
£80 - £120

**682**

A pair of white metal ear studs, each set an emerald and diamond cluster, w. 8 mm, 3.4 gms  
£150 - £200

**683**

An 18ct yellow gold cluster ring set oval emerald within a double border of diamonds and smaller emeralds, ring size M, 5.4 gms l. of setting  
£200 - £300



Lot 683



Lot 684

**684**

A pair of 9ct yellow gold engine turned cufflink's of oval form, Birmingham 1938, 5.5 gms  
£70 - £90

**685**

An 18ct yellow gold ring set diamond in an eight claw setting, stone approximately 0.25 carats, ring size U 1/2, 2.9 gms  
£60 - £100

**686**

A 22ct yellow gold wedding band, London hallmark indistinct, ring size V, 2.7 gms, band w. 2 mm  
£50 - £80

**687**

A 9ct yellow gold half eternity ring set diamonds and sapphires, Birmingham 1990, ring size V 1/2, 2.7 gms  
£80 - £120

**688**

An 18ct yellow gold ring set five graduated diamonds in a scrolled setting, ring size V, 5.4 gms  
£150 - £200

**689**

An 18ct yellow gold ring set ruby and two small diamonds, ring size V, 2.4 gms  
£150 - £200

**690**

A 9ct yellow gold ring set oval sapphire and six small diamonds, London 1987, ring size M 1/2, 1.7 gms  
£120 - £150

**691**

A 14ct yellow gold half eternity ring set five small sapphires and four small diamonds, ring size N, 1.8 gms  
£120 - £150

**692**

An early 20th century 9ct yellow gold bar brooch set small pearls and turquoise, together with a further brooch of vine design set small pearls, overall 5.8 gms (2)  
£50 - £80

**693**

Two modern brooches in the Oriental manner set dark green jade (2)  
£50 - £80

**694**

A late 19th/early 20th century metalware locket of oval form suspended on a long chainlink necklace  
£40 - £60

**695**

A two tone green jade-type continuous bead necklace, bead d. 1.1 cm, l. 47 cm  
£30 - £40

**696**

A 19th century yellow metal bar brooch in the form of an arrow and set rose cut diamonds and a small pearl, w. 7.3 cm, 5.1 gms  
£80 - £120



Lot 696

**697**

A 9ct yellow gold ring set oval opal within a rope design border, together with a silver signet ring set amber (2)  
£50 - £80

**698**

A metalware mounted pendant set oval hardstone, l. 6.5 cm, a gilt metal mounted mother of pearl pill container of oval form and a brooch set paste (3)  
£20 - £30

**699**

A gold plated chain suspending two 9ct yellow gold medallions and a hardstone fob, a 14ct yellow gold tie pin in the form of an abacus, a pair of yellow metal cufflink's and three tie/stick pins (qty)  
£120 - £150

**700**

An 18ct yellow gold ring set oval sapphire and two diamonds in a rubover setting, Birmingham 1999, ring size N, 3 gms  
£100 - £150

**701**

A white metal signet ring set nine small sapphires in a surround of sixteen diamonds within a bark design setting, ring size T, 10.8 gms  
£350 - £400



Lot 701

**702**

A 9ct yellow gold half eternity ring set diamonds in a channel type setting, together with four further 9ct yellow gold dress rings set paste, various sizes, overall 6.2 gms (5)  
£80 - £120



Lot 708



Lot 712

**703**

A 9ct yellow gold ring set oval emerald in a surround of small diamonds, together with three further 9ct yellow gold dress rings, various sizes, overall 10.7 gms (4) *£150 - £200*

**704**

A 9ct yellow gold band ring set brilliant cut diamond in a recessed star setting, Sheffield 1981, ring size U, 7.6 gms *£150 - £200*

**705**

An 18ct yellow gold and platinum highlighted ring set five graduated diamonds in an in-line setting, ring size O 1/2, 3 gms *£150 - £200*

**706**

A 9ct yellow gold cluster ring set small diamonds, ring size J, 1.7 gms *£40 - £60*

**707**

A pair of 14ct yellow gold ear studs of arrow design and set paste, together with two further pairs of ear studs, overall 3.2 gms (3 pairs) *£60 - £80*

**708**

A 9ct white gold bangle set four small diamonds in a square setting, internal w. 6.4 cm, 4.6 gms *£80 - £120*



Lot 713

**709**

A mixed parcel of ear studs etc. *£20 - £30*

**710**

A 10ct yellow gold engine turned propelling pencil by Wahl Eversharp decorated in a checkerboard finish, l. 13.2 cm *£60 - £100*

**711**

A 9ct yellow gold engine turned propelling pencil by Rose, l. 12.1 cm *£60 - £100*

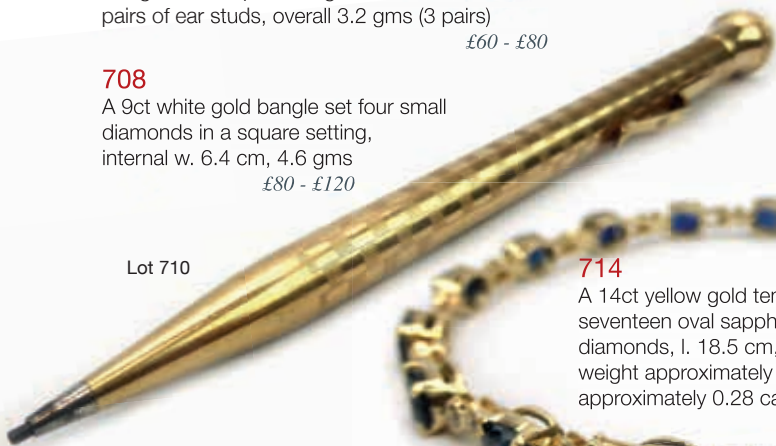
**712**

An 18ct white gold ring set brilliant cut diamond in a six claw setting, stone approximately 0.75 carats, ring size O, 2.8 gms *£900 - £1000*

**713**

An 18ct white gold tennis-type bracelet set pale blue sapphires and small diamonds, l. 18 cm *£900 - £1000*

Lot 710



**714**

A 14ct yellow gold tennis-type bracelet set seventeen oval sapphires interspersed with small diamonds, l. 18.5 cm, 8.8 gms, total sapphire weight approximately 8.17 carats, diamonds approximately 0.28 carats *£1000 - £1200*

Lot 714





Lot 715

**715**

An 18ct yellow gold ring set brilliant cut diamond in a raised four claw setting, the shoulders each set small diamonds, central stone approximately 0.75 carats, ring size N 1/2, 2.9 gms *£500 - £700*

**716**

An 18ct yellow gold and platinum highlighted ring set circular sapphire and two small diamonds, ring size N 1/2, 2.1 gms *£60 - £100*

**717**

A yellow metal ring set three brilliant cut diamonds, each in a raised four claw setting above a split shank, central stone approximately 0.25 carats, ring size O, 4.8 gms *£150 - £200*



Lot 717

**718**

A gold plated chainlink necklace suspending an Edwardian 9ct yellow gold openwork pendant, together with a yellow metal brooch reading Rosina (2) *£30 - £40*

**719**

A 9ct yellow gold oval pendant set citrine, l. 3.2 cm, 3.63 gms *£30 - £40*

**720**

A 9ct yellow gold fancy curb link necklace with lobster clasp, l. 48 cm, 20.8 gms *£200 - £300*

**721**

An 18ct yellow gold flowerhead ring set cabochon ruby in a border of small diamonds, Birmingham 1985, ring size P, 3.9 gms *£100 - £150*

**722**

An early 20th century 18ct yellow gold signet ring of shield design, Birmingham 1918, ring size P, 8.6 gms *£150 - £200*



Lot 723

**723**

An 18ct yellow gold ring set brilliant cut diamond in an eight claw setting, stone approximately 0.6 carats, ring size O, 2.4 gms *£400 - £600*

**724**

A single strand continuous cultured pearl necklace with 9ct yellow gold clasp set pearls and garnets, pearls approximately d. 6 mm, l. 54 cm *£150 - £200*

**725**

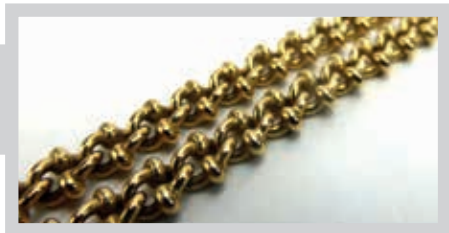
A 19th century yellow metal fancy chainlink watch chain, l. 70 cm, 37.5 gms *£400 - £500*



Lot 725

**726**

A 9ct yellow gold ropetwist necklace, Birmingham import mark 1997, l. 70 cm, 25.1 gms *£250 - £300*



**727**

A 9ct yellow gold fine chainlink necklace suspending a 9ct yellow gold openwork pendant set banded agate, overall 3.1 gms *£30 - £40*





Lot 728

**728**

A yellow metal five row chainlink bracelet, 17.2 gms £180 - £220



Lot 729

**729**

A 19th century cameo brooch of oval form carved with figures within a classical setting in a gold plated leaf design mount, overall 6.6 x 5 cm £250 - £300

**730**

A pair of 9ct yellow gold florally engraved cufflink's of canted rectangular form, Birmingham 1934, 3.2 gms, cased £30 - £40

**731**

A 9ct yellow gold articulated charm in the form of a clown and set red and clear paste, together with a 9ct yellow gold ring set three orange coloured stones, overall 5.1 gms (2) £40 - £60

**732**

An early 20th century yellow metal mounted porcelain button decorated with a female figure head and shoulders, d. 2.7 cm, together with two early 19th century yellow metal mounted and plated hair mourning brooches (3) £80 - £120

**733**

Four 19th century and later silver and metalware brooches including a target brooch of Etruscan design, d. 3.6 cm, together with a silver bladed mother of pearl handled fruit knife (5) £30 - £40

**734**

A gold coloured brooch of openwork design and set marcasite and opal in the Art Nouveau manner, w. 4.1 cm, together with three yellow metal stick pins (4) £30 - £40

**735**

A cased set of metalware dress studs in the Celtic manner, together with a mixed parcel of silver and metalware jewellery including a ring set cabochon jade-type stone, a pair of amber ear pendants and other items (qty) £30 - £40

**736**

A 14ct yellow gold tie pin/earring of knot design set centrally with a small diamond, a pair of yellow metal knot ear studs and a metalware mounted mother of pearl brooch in the form of a tooth (4) £40 - £60



Lot 730

All estimates exclude buyer's premium of 21% including VAT which is payable in addition

**737**

A mixed parcel of yellow gold and yellow metal jewellery comprising a ring, three pairs of ear studs and two pendant necklaces, all set red and clear stones (qty) *£100 - £150*

**738**

A 10ct yellow gold ring set pear shaped amethyst and diamond, together with a pair of 14ct yellow gold ear studs set oval amethyst, overall 5 gms (3) *£80 - £120*

**739**

A 9ct yellow gold ring set single diamond in a six claw setting, together with a yellow metal ring set diamond chip in an illusion setting, overall 3.2 gms *£40 - £60*

**740**

Two 22ct yellow gold wedding bands, ring sizes K 1/2 & M, overall 9.8 gms (2) *£180 - £220*

**741**

Three 9ct yellow gold wedding bands, overall 5.4 gms, together with a 14ct yellow gold ring set small diamond, 3.6 gms, various sizes (4) *£80 - £120*

**742**

A yellow metal 'college' ring set green agate, mother of pearl and black enamel and dated 1955, ring size W 1/2, 8.1 gms *£120 - £150*

**743**

A 10ct two colour gold 'moose' ring set single diamond within a border of red enamel, ring size Z, 6.6 gms *£120 - £150*

**744**

A 10ct yellow gold signet ring set cabochon garnet in a rubover setting, ring size R, 6.1 gms *£100 - £150*

**745**

A part gold pendant necklace in the form of a cross and a similar silver example (2) *£30 - £40*

**746**

A 14ct yellow gold fine ropetwist necklace suspending a 10ct yellow gold pendant of tapered ladder design set small diamonds, pendant l. 1.7 cm, 2.8 gms *£50 - £80*



Lot 746



Lot 747

**747**

A Tiffany & Co. silver pendant necklace of heart shaped padlock design *£50 - £80*

**748**

A group of 14ct yellow gold jewellery comprising a necklace set small pearls, two pendant necklaces and a fine flat curb link necklace and matching bracelet, overall 8.2 gms, together with a 9ct yellow gold 'Mum' pendant necklace (6) *£80 - £120*

**749**

An early 20th century 18ct yellow gold and platinum highlighted ring set clear stone in a raised openwork setting, ring size P, 3.6 gms *£60 - £80*



Lot 749

**750**

Two 9ct yellow gold dress rings set smoky quartz and red coloured stones, various sizes, overall 12 gms (2) *£80 - £120*

**751**

Six 9ct yellow gold band and signet rings, 23 gms, together with a 22ct yellow gold wedding band, 2.9 gms, various sizes (7) *£200 - £250*

**752**

An Edwardian 18ct yellow gold buckle ring set small diamond in a recessed star setting, Chester 1907, ring size O 1/2, 5.2 gms *£100 - £150*

### 753

An early 20th century 18ct yellow gold and platinum highlighted ring set old cut diamond, two 9ct yellow gold signet rings set small diamonds and three further dress rings set paste, various sizes, overall 19.8 gms (6)

£150 - £200

### 754

An 18ct yellow gold ring set oval opal triplet in a border of twelve diamonds within fleur de lis shoulders, ring size Q, 5.3 gms, together with a 9ct yellow gold ring set opal (2)

£100 - £150

### 755

A 9ct yellow gold curb link bracelet suspending a Victorian full sovereign dated 1885, an Edwardian half sovereign dated 1906 and various other charms, overall 64 gms

£700 - £900

### 756

Four pairs of 9ct yellow gold and yellow metal earrings set various stones, together with two single earrings, overall 8.6 gms

£50 - £80

### 757

An Edwardian 9ct yellow gold openwork pendant of Art Nouveau design, a similar modern 9ct yellow gold pendant and a yellow metal bar brooch, overall 10.6 gms, together with a pair of ear pendants in the rococo manner (5)

£80 - £120

### 758

A 9ct yellow gold chain link necklace suspending a yellow metal swivel fob in the form of a pair of doves, a part gold heart shaped locket, a lantern charm, a ring and a green stone pendant (5)

£60 - £100



Lot 758

### 759

A 9ct yellow gold snakelink necklace suspending an opal pendant, 6.5 gms, together with a similar gold plated necklace (2)

£50 - £80

### 760

A mixed parcel of 9ct yellow gold and yellow metal earrings, mostly hoop design, overall 22.6 gms (qty)

£180 - £220

### 761

Three part gold ladies wristwatches, a 9ct yellow gold St Christopher pendant and other items (qty)

£80 - £120

### 762

Five pairs of silver ear pendants, each set blue coloured stones (5 pairs)

£20 - £30

### 763

A Victorian florally engraved silver bracelet of buckle design, maker RJD, Birmingham 1884, internal w. 5.7 cm

£40 - £60

### 764

A Scottish metalware hardstone brooch of circular form d. 3.6 cm, a silver brooch of wreath design, a National Rifle Association medallion, a metalware pendant in the form of a bearded gentleman and an openwork pendant set paste (5)

£40 - £60

### 765

A mixed parcel of twelve yellow metal, gold plated and silver stick pins of varying designs, together with a 19th century yellow metal mourning brooch set plaited hair, a 9ct yellow gold bar brooch of Etruscan design and an oval locket (15)

£100 - £150



Lot 755

All estimates exclude buyer's premium of 21% including VAT which is payable in addition



@WHPeacock



/WHPeacockAuctioneer

**766**

A pair of late 19th/early 20th century yellow metal ear pendants of Etruscan design, l. 5 cm, together with a yellow metal 'Regard' ring, overall 7.5 gms *£100 - £150*

**767**

A 9ct yellow gold chainlink necklace suspending an oval locket depicting lily of the valley and set small pearls and green glass, locket l. 3.6 cm, overall 12.7 gms *£100 - £150*

**768**

A silver snakelink necklace suspending an oval pendant set amber, a similar ring and an amber-type elasticated bracelet, together with a silver dress ring (4) *£60 - £80*



Lot 769

**769**

A 9ct yellow gold five bar gatelink bracelet with heart shaped padlock clasp, 14.8 gms *£150 - £200*

**770**

A yellow metal signet ring engraved with initials, ring size 4, 10.4 gms *£80 - £120*

**771**

A 9ct yellow gold signet ring with engine turned-type decoration, ring size X, 4.7 gms *£40 - £60*

**772**

An 18ct yellow gold ring set elliptical red coloured stone and a pair of similar ear pendants, overall 9 gms (3) *£150 - £200*

Lot 776



**773**

A 9ct white gold bracelet set small diamonds in millegrain leaf design settings, l. 19 cm, 6.7 gms *£120 - £150*

**774**

A mixed parcel of silver jewellery comprising a pair of ear pendants set amethyst, three bracelets, a ring set amber, three further pairs of earrings and a gilt flowerhead ring set five coloured stones (qty) *£80 - £120*

**775**

A Chinese carved mottled green jade pendant centrally depicting an exotic bird within a foliate ground, l. 4.8 cm suspended on a metalware chain *£80 - £100*



Lot 775

**776**

A 9ct yellow gold hinged bracelet set five sapphires in recessed star settings, internal w. 5.9 cm, Birmingham 1977, 25.9 gms *£300 - £350*





Lot 777

**777**

A late 19th/early 20th century brooch centrally set an oval enamel plaque depicting figures in a mountainous landscape at dusk within a yellow metal openwork mount of rococo design, plaque 3.2 x 3.9 cm £150 - £200



Lot 778

**778**

An early 20th century 15ct yellow gold bar brooch of openwork design set peridot and seed pearls, w. 3.7 cm, 2.4 gms (af) £40 - £60

**779**

A mixed parcel of silver and metalware jewellery comprising a circular pendant of abstract design set oval blue coloured stone, d. 4.6 cm, a flowerhead pendant necklace and matching earrings, a flowerhead brooch and a similar pendant (6) £40 - £60

**780**

Two hammered silver and metalware pendants of teardrop form, l. 5.3 cm, together with three silver and metalware brooches of stylised flowerhead form (5) £40 - £60

**781**

Seven silver and metalware pendants of abstract design, max w. 4.2 cm (7) £40 - £60

**782**

A mixed parcel of silver and metalware jewellery including an ingot pendant, an ARP cap badge, charms, brooches and other items (qty) £30 - £40

**783**

A mixed parcel of silver, metalware and yellow metal jeweler's spare parts and sundry items including loose stones etc. (qty) £40 - £60

**784**

A mixed parcel of 9ct yellow gold, yellow metal and gold plated jewellery including a 9ct yellow gold boxlink necklace with synthetic pearl pendant, a 9ct yellow gold chainlink necklace suspending an Egyptian hieroglyph pendant, a 9ct yellow gold watch chain with later flowerhead decoration and other items (qty) £200 - £250

**785**

An 18ct white gold ring set paste, ring size Q, 4.2 gms £40 - £60

**786**

A Maltese yellow gold cross pendant necklace, 4.1 gms £60 - £80

**787**

A yellow metal ring set five cabochon turquoise, ring size O, together with a pair of yellow metal ear studs set opal, overall 3 gms (3) £80 - £120

**788**

An 18ct yellow gold ring set brilliant cut diamond in a six claw setting, stone approximately 0.4 carats, ring size O, 2.9 gms £300 - £400



Lot 788



Lot 789

**789**

A platinum ring set brilliant cut diamond in a raised six claw setting, the shoulders each set two further baguette cut diamonds and a brilliant cut diamond, central stone approximately 0.25 carats, ring size N, 4.8 gms £350 - £450



Lot 790

**790**

A white metal openwork brooch in the Belle Epoque manner set thirty brilliant cut diamonds in millegrain settings within a scalloped mount, w. 5.5 cm, 7.5 gms *£400 - £600*

**791**

A white metal openwork bar brooch in the Belle Epoque manner set single brilliant cut diamond in a millegrain setting within a bright-cut mount, w. 5 cm, 2.8 gms *£80 - £120*

**792**

A white metal openwork brooch of rectangular form in the Belle Epoque manner set single brilliant cut diamond in a millegrain setting within a filigree-type mount, w. 3.4 cm, 2.9 gms *£150 - £200*

**793**

A white metal pendant set three brilliant cut diamonds, a pair of cultured pearls, a baguette cut pale blue topaz and an oval opal in an inline setting, largest diamond approximately 0.6 carats, l. 4 cm, 4.8 gms *£400 - £600*



**794**

A white metal ring set three graduated diamonds in a shallow carved setting, ring size O 1/2, 3.3 gms *£120 - £150*



Lot 794

**795**

A white metal ring set single diamond in a raised filigree-type setting, stone approximately 0.3 carats, ring size I, 1.9 gms *200 - £250*



Lot 795

**796**

A single strand graduated cultured pearl necklace with 10ct white gold clasp, l. 57 cm, largest pearl d. 8 mm *£60 - £100*

**797**

Four pendant necklaces comprising a yellow gold chainlink necklace suspending a pendant set rose shaped pink coral and small diamond, a gold plated necklace with cameo pendant set small diamond, a gold coloured filigree work cross necklace and a gold plated necklace of Art Nouveau design set turquoise (4) *£120 - £150*



Lot 798

**798**

An 18ct yellow gold crossover ring set brilliant cut diamond in an eight claw setting, stone approximately 0.4 carats, ring size L, 3.1 gms *£300 - £400*

**799**

An 18ct yellow gold wedding band, ring size O, 5.6 gms, together with two 9ct yellow gold and yellow metal signet rings, 5.6 gms (3) *£120 - £150*

**800**

Three 18ct yellow gold rings set clear and coloured stones, 7.8 gms, together with four 9ct yellow gold dress rings, 8.4 gms, various sizes (7) (af) *£150 - £200*

**801**

A yellow metal clip in the form of the letter 'B', l. 3 cm, an Edwardian 9ct yellow gold bar brooch and a gold plated fob set hardstone (3) *£60 - £80*

**802**

A 9ct yellow gold necklace set semi precious stones (af), a pair of 14ct yellow gold screw-type earrings set turquoise and paste, a pair of ear pendants set pale blue topaz and two further pairs of earrings (qty) *£100 - £150*

**803**

A group of silver and metalware earrings including a pair of ear pendants of bird design set coloured enamel, a pair of large square studs set turquoise, mother of pearl and other stones, a pair of screw-type earrings modelled as ewer's and many others, approximately 16 pairs *£50 - £80*

**804**

A mixed parcel of silver and metalware jewellery comprising seven brooches and six pairs of earrings, each in the form of a cat or dog (qty) *£30 - £50*

**805**

A group of silver and metal brooches including a Mexican example of spiral form set niello-type enamel and cabochon amethyst, d. 4.3 cm, a large brooch in the form of an exotic bird, l. 11.5 cm, another modelled as a pony and many others (19) *£60 - £100*

**806**

A mixed parcel of silver and metalware jewellery including three cuff bracelets, a charm bracelet, three further bracelets, a funnel, a medallion and a clip in the form of a stylised sea creature (qty) *£60 - £100*

**807**

A mixed parcel of silver and metalware necklaces including an example in the form of bunches of grapes, a similar necklace in the form of pomegranate, two further necklaces and four pendants/pendant necklaces (8) *£60 - £100*

**808**

A mixed parcel of silver and metalware amethyst set jewellery including a Mexican bracelet of Rococo design, a matching brooch and further items (qty) *£60 - £100*

**809**

A Mexican silver carved green stone necklace, a similar bracelet etc., together with a carved lapis lazuli brooch, an amber-type bead necklace and other items (qty) *£40 - £60*

**810**

An 18ct yellow gold crossover ring set sapphire and two diamonds, ring size M, 2.8 gms *£70 - £90*

**811**

An 18ct white gold ring set oval sapphire and six small diamonds in a raised setting, ring size L 1/2, 4.6 gms *£80 - £120*

**812**

An 18ct white gold fine boxlink necklace suspending a pendant set synthetic Tahitian pearl, together with a 9ct yellow gold pendant set paste, overall 4.1 gms (2) *£60 - £100*

**813**

A platinum ring set emerald cut emerald in a raised four claw setting, the shoulders each set a single trillion cut diamond, emerald approximately 10 x 8 mm, ring size O, 7.1 gms *£800 - £1200*

**Lot 813****814**

A 9ct white gold ring set three pale blue topaz and two diamonds in a channel crossover setting, together with a similar ring set small diamonds, overall 2.8 gms (3) *£60 - £100*

**815**

Two 9ct yellow gold dress rings set coloured stones, overall 4.7 gms, together with two silver dress rings (4) *£100 - £150*

**816**

A yellow metal 'claddagh' type ring, ring size K, 4 gms \*shank stamped with character marks and '999.9' *£50 - £80*

**Lot 816****817**

A silver and gold plated tennis bracelet set oval blue coloured stones, l. 18.5 cm, together with a similar bracelet set three rows of dark blue stones (2) *£60 - £80*

**818**

A 9ct white gold bracelet of wave designs set small white coloured stones, l. 19 cm, 3.1 gms *£40 - £60*

**819**

A 9ct white gold tennis bracelet set circular pale blue stones, l. 20 cm, 10.6 gms *£50 - £80*



Lot 828

**820**

A 9ct white gold tennis bracelet set circular pink stones, l. 19 cm, 12.8 gms £60 - £100

**828**

An 18ct yellow gold bracelet of 19th century design set garnet clusters, l. 18 cm, 23 gms £300 - £400

**829**

An early 20th century 15ct yellow gold bracelet set ruby, diamond and sapphire in a diagonal setting, internal w. 5.6 cm, 10 gms £400 - £500



Lot 829

**821**

A suite of white metalware jewellery comprising a pendant necklace, a bracelet and a dress ring all set pink coloured stones (3) £60 - £100

**822**

A pair of 9ct yellow gold ear studs of snowflake design set small brilliant and baguette cut diamonds, two pairs of 9ct white gold ear studs set clear stones and a pair of silver gilt ear studs (4 pairs) £60 - £100



Lot 830

**830**

A white metal full eternity ring set fifteen brilliant cut diamonds in rubover settings, total diamond weight approximately 3 carats, ring size N, 3.7 gms £2000 - £2500

**823**

A pair of 9ct yellow gold ear studs set trillion cut tanzanite, a pair of 9ct white gold ear studs set baguette cut blue coloured stones and two further pairs of ear studs (4 pairs) £60 - £100

**824**

Five pairs of 9ct yellow gold ear studs set pale blue and green coloured stones (5 pairs) £80 - £120

**825**

A suite of 19th century Etruscan Revival jewellery comprising a cuff bracelet, a pendant, a brooch and a single earring, each set single pearl and Royal blue enamel within wire work borders, housed within a fitted case of hoof design £500 - £800

**826**

An early 20th century yellow metal pendant in the form of a spider and set two pale blue stones, l. 2.8 cm, together with an opalescent graduated bead necklace, l. 42 cm £60 - £100

**827**

A rough amber-type graduated bead necklace, l. 80 cm £20 - £30







Lot 831

**831**

A 14ct white gold ring set baguette cut emerald in a four claw setting within a border of small diamonds, the shoulders each set two rows of small diamonds, emerald approximately 1.1 carats, ring size N 1/2, 4.7 gms, with certificates £500 - £700

**832**

A 14ct white gold pendant set teardrop shaped emerald within a diamond set mount of bow design, emerald approximately 1.1 carats, l. 2.8 cm, 2 gms, with certificates £300 - £400



Lot 832

**833**

A 14ct yellow gold pendant set teardrop shaped emerald within a diamond set mount of foliate design, emerald approximately 1.1 carats, l. 2.9 cm, 2.5 gms, with certificates £300 - £400



Lot 833

**834**

A 9ct yellow gold brooch of leaf design, 2.9 gms, together with three further dress brooches (4) £40 - £60

**835**

A 9ct white gold pendant set oval garnet, l. 2.5 cm, 3.5 gms £30 - £40

**836**

A pair of 18ct white gold ear pendants set small diamonds, l. 5 cm, 2.2 gms £60 - £100

**837**

An 18ct yellow gold cluster ring set three tiers of small diamonds, ring size R 1/2, 4.7 gms £200 - £250



Lot 837

**838**

An 18ct yellow gold ring set small diamond in an illusion setting, 2.1 gms, together with three 9ct yellow gold dress rings, various sizes (4) £80 - £120

**839**

Thirteen silver bracelets of varying designs £30 - £40

**840**

A 14ct yellow gold necklace set multiple facet cut smoky quartz £30 - £40

**841**

An Indian silver gilt bracelet set three rows of rubies £30 - £40

**842**

An Indian dress necklace set clear and pink glass and suspended on a cord strap, a pair of matching ear pendants and a similar necklace (4) £40 - £60

**843**

A card displaying a selection of coloured crystal stones (qty) £20 - £30



**844**

A 9ct yellow gold ingot pendant of circular form suspended on a yellow metal chain, overall 34.1 gms £350 - £400



### 852

An early 20th century yellow metal pendant of star shaped form set pale blue stone in a surround of white coloured stones, possible white sapphires, w. 2.6 cm, 3 gms £200 - £300

### 853

Three 9ct yellow gold dress rings set sapphires and opals, various sizes, overall 7.8 gms (3)  
£80 - £120

### 854

A yellow metal fine curb link necklace suspending a 9ct yellow gold pendant of knot design set small diamond, together with a 9ct yellow gold chain link necklace suspending a heart shaped pendant, overall 7.4 gms (2)  
£60 - £100

### 855

A silver curb link watch chain (converted to a necklace) with lobster clasp, together with a costume necklace, a bracelet and a pair of earrings  
£30 - £40

### 845

Three 9ct yellow gold and yellow metal dress rings set purple and red coloured stones, various sizes, overall 10.5 gms (3)  
£80 - £120

### 846

An 18ct yellow gold ring set single diamond in a raised claw setting, ring size L, 3.6 gms  
£80 - £120

### 847

Three 9ct yellow gold and yellow metal dress rings set cameo and other stones, various sizes, overall 9.6 gms (3)  
£80 - £120

### 848

An 18ct white gold ring set three graduated sapphires in a border of small diamonds, ring size M 1/2, 4.6 gms  
£100 - £150

### 849

A 9ct yellow gold ring set small rubies and diamonds in a bow shaped setting, ring size M, 3.2 gms  
£50 - £80

### 850

A yellow gold cluster ring set set small diamonds and emeralds in a raised setting, ring size N, 4.5 gms  
£80 - £120

### 851

A 9ct yellow gold cluster ring set seven small diamonds in a raised setting, ring size O, 3.1 gms  
£60 - £80

### 856

A 9ct yellow gold amethyst and diamond cluster ring, together with a similar 9ct yellow gold dress ring set purple and clear paste, various sizes, overall 3.9 gms (2)  
£60 - £100

### 857

A 9ct yellow gold half eternity ring set five small emeralds and four small diamonds in a v-shaped setting, ring size O, 2.4 gms  
£80 - £120



Lot 857

### 858

An 18ct white gold half eternity ring set five small diamonds in carved settings, ring size M, 3.2 gms  
£80 - £120



Lot 858

### 859

A 14ct yellow gold fine chain link necklace suspending an openwork pendant of openwork design set sapphire and pearls, pendant drop l. 4.4 cm, overall 2.7 gms  
£60 - £100

**860**

An early 20th century 9ct yellow gold bar brooch set pale pink stone, w. 5.3 cm, together another bar brooch set paste, overall 5.2 gms (2)

£40 - £60



Lot 861

**861**

A platinum solitaire ring set 'Brilliant Fire' diamond in a raised four claw setting, with certificate showing the following; stone 0.5 carats, colour G, clarity VS2, ring size J, 4.7 gms

£700 - £900



Lot 862

**862**

An 18ct yellow gold ring set pave princess cut diamonds in a heart shaped setting within a border of small diamonds, ring size O, 5.7 gms

£300 - £400

**863**

A 19th century mourning brooch centrally decorated with plated hair within a border of small pearls and black enamel, w. 4.2 cm, together with two similar brooches and a cameo brooch (4)

£80 - £120

**864**

Seven loose baroque pearls, max l. 4 cm, together with four further loose cut stones (11)

£150 - £200

**865**

Two vintage Christian Dior necklaces, both boxed (2)

£40 - £60

**866**

Spare Lot

**867**

Six Indian continuous bead necklaces, some with threaded details

£60 - £100

**868**

A mixed parcel of silver and metalware jewellery including bangles, a locket, rings, clips etc (qty)

£40 - £60

**869**

A mixed parcel of silver and base metal mounted brooches of varying designs including banded agate, moss agate and many others (qty)

£40 - £60

**870**

Three pairs of silver cufflink's including an example in the form of rugby balls

£20 - £30

**871**

Three pairs of vintage Christian Dior ear clips (3 pairs)

£30 - £40

Lot 865



**872**

Three items of jet-type jewellery including a teardrop shaped pendant, an oval locket and a graduated bead necklace, together with a lacquered snuff in the form of a shoe (4) £30 - £40

**873**

A mixed parcel of jewellery including a silver pendant necklace of cross form, a graduated green bead necklace, a cameo brooch and other items (qty) £120 - £150

**874**

A mixed group of costume jewellery including earrings, brooches, bracelets, necklaces etc (qty) £40 - £60

**875 - 900**

Spare lots

**901**

A graduated turquoise-type bead necklace, l. 42 cm £20 - £30

**902**

A jade-type bead necklace suspending a pendant £20 - £30

**903**

A jade-type bead necklace suspending a pendant of seed pod design £20 - £30

**904**

Fourteen hardstone pendants, mostly of teardrop form (14) £40 - £60

**905**

A group of nineteen carved jade-type pendants including an example in the form of a teapot l. 4.9 cm, varying colours (19) £100 - £150

**906**

A pale green/brown jade-type bangle, internal d. 5.9 cm £50 - £80

**907**

A pale green/brown jade-type bangle, internal d. 6.1 cm £50 - £80

**908**

A pale green/brown jade-type bangle, internal d. 6.2 cm £50 - £80

**909**

A green jade-type bangle, internal d. 5.9 cm £50 - £80

**910**

A pale green/brown jade-type bangle, internal d. 5.7 cm £50 - £80

**911**

A green jade-type bangle, internal d. 5.8 cm £50 - £80

**912**

A green jade-type bangle, internal d. 6.2 cm £50 - £80

**913**

A green jade-type bangle, internal d. 5.8 cm £50 - £80

**914**

A pale green/brown jade-type bangle, internal d. 5.9 cm £50 - £80

**915**

A circular pale green/red jade-type pendant, d. 4.9 cm, together with a similar pendant (2) £20 - £30

**916**

A carved green jade-type pendant of heart shaped form l. 2.1 cm £30 - £40

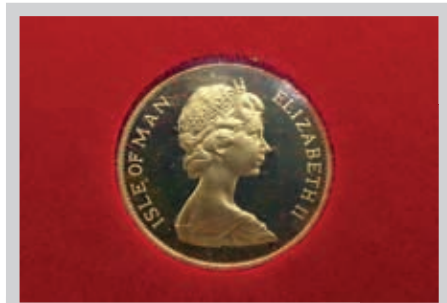
**917 - 950**

Spare Lots

Lot 915







**951**

A Pobjoy Mint Isle of Mann sovereign dated 1979 \*commemorating Queen Elizabeth II's visit in 1979, limited issue of 50,000

£200 - £250

**952**

An Isle of Mann sovereign dated 1973

£200 - £250



Lot 953

**953**

An Isle of Mann sovereign dated 1974

£200 - £250

**954**

A Pobjoy Mint Isle of Mann half sovereign dated 1979, cased \*commemorating Queen Elizabeth II's visit in 1979

£100 - £150

**955**

A Pobjoy Mint Isle of Mann half sovereign dated 1979 \*commemorating Queen Elizabeth II's visit in 1979, limited issue of 30,000

£100 - £150

**956**

A Pobjoy Mint Isle of Mann half sovereign dated 1980, cased \*limited issue of 30,000

£100 - £150

**957**

A Royal Mint proof sovereign dated 1984, cased

£200 - £250

**958**

A Royal Mint proof half sovereign dated 1982, cased

£100 - £150

Lot 955



**959**

A Royal Mint proof half sovereign dated 1983, cased

£100 - £150



Lot 960



Lot 959

**960**

A Royal Mint proof half sovereign dated 1988, cased \*limited issue 03098 of 22,500

£100 - £150

**961**

A Royal Mint proof half sovereign dated 1995, cased

£100 - £150



Lot 962

**962**

A Royal Mint proof Britannia 1/10oz £10 coin dated 1992, cased \*limited issue of 0362 of 1,000

£90 - £110

**963**

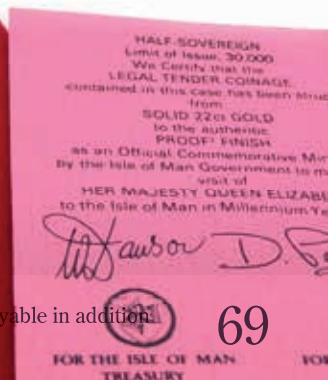
A Royal Mint proof Britannia 1/10oz £10 coin dated 1993, cased \*limited issue of 0435 of 1,000

£90 - £110

**964**

A Royal Mint proof Britannia 1/10oz £10 coin dated 1995, cased \*limited issue of 0225 of 1,500

£90 - £110



All estimates exclude buyer's premium of 21% including VAT which is payable in addition.

@WHPeacock /WHPeacockAuctioneers



**965**  
An Edwardian sovereign  
dated 1907 £180 - £220

**966**  
An Edwardian sovereign  
dated 1909, Perth Mint  
£200 - £250

**967**  
A sovereign dated  
1912 £180 - £220

**968**  
An Isle of Mann  
half sovereign  
dated 1973  
£100 - £150

Lot 974

**969**  
An Edwardian half sovereign dated 1909  
£90 - £110

**970**  
An Edwardian sovereign dated 1909 in a loose  
9ct yellow gold mount, overall 5.3 gms  
£100 - £150

**971**  
A sovereign dated 1911 £180 - £220

**972**  
A Victorian sovereign dated 1887, Melbourne  
Mint £180 - £220

**973**  
A half sovereign dated 1912 £90 - £110

**974**  
A 9ct yellow gold figaro link necklace  
suspending a Victorian sovereign dated 1891 in  
a loose 9ct yellow gold mount, overall 18.7 gms  
£300 - £350

**975**  
A Victorian sovereign  
dated 1861, shield  
design, young head  
£200 - £250

**976**  
A Victorian sovereign  
dated 1899 £180 - £220



Lot 975

**977**  
A Victorian sovereign dated  
1900 £180 - £220

**978**  
An Edwardian half sovereign  
dated 1909 £90 - £110

**979**  
A 9ct yellow gold bark design ring set Victorian  
half sovereign dated 1893 in a loose mount,  
overall 9.2 gms £100 - £150



Lot 977



**980**  
A 9ct yellow gold figaro link necklace  
suspending a Krugerrand dated 1975 in a  
loose 9ct yellow gold mount, overall  
62.4 gms £1000 - £1200



Lot 981

**981**  
A Victorian sovereign dated 1885 £180 - £220

**982 - 1000**  
Spare Lots

### 1001

A ladies 18ct yellow gold manual wind wristwatch by Futura, the square dial with gold coloured Arabic and baton numerals on a leather cord strap, overall 9.5 gms *£50 - £80*

### 1002

A 9ct yellow gold fob watch, the gilt dial with black Roman numerals within a florally engraved case, dial d. 2.1 cm, later converted to a wristwatch, overall 22.8 gms *£80 - £120*

### 1003

A part 9ct yellow gold gentleman's wristwatch, the circular silvered dial with black Arabic numerals and second hand section on an expanding bracelet strap, dial d. 2.3 cm, overall 48.6 gms *£50 - £80*

### 1004

A 9ct yellow gold ladies wristwatch by Longines, the square white dial with gold coloured baton and Arabic numerals on a waffle design articulated bracelet strap, dial w. 9 mm, overall 41.4 gms *£300 - £400*

### 1005

A 9ct yellow gold ladies wristwatch by Tissot, the circular dial with baton numerals on a bark design articulated bracelet strap, dial d. 1.4 cm, overall 15 gms, together with a similar ladies wristwatch by Cyma (2) *£100 - £150*



Lot 1004

### 1006

A 9ct yellow gold gentleman's wristwatch by Roamer, the circular dial with gold coloured baton and Arabic numerals on a later strap, dial d. 2.6 cm, overall 33.7 gms *£80 - £120*

### 1007

A 9ct yellow gold ladies wristwatch by Jaeger-Le Coultre, the square silvered dial with gold coloured baton and Arabic numerals on an articulated brick design strap, dial w. 1.3 cm, overall 49.4 gms, cased *£700 - £900*

### 1008

A 9ct yellow gold ladies wristwatch by Smiths, the circular dial with gold coloured Arabic and baton numerals on an articulated bracelet strap, dial d. 1.2 cm, overall 19.1 gms, cased *£200 - £250*

Lot 1007





Lot 1009

**1009**

A part 18ct yellow gold ladies wristwatch by Rolex, the circular dial with baton numerals on a 9ct yellow gold articulated bracelet strap, dial d. 1.2 cm, overall 17.5 gms *£300 - £350*

**1014**

A 9ct yellow gold cased gentleman's quartz wristwatch, the circular white dial with black Roman numerals and date aperture on a tan leather strap, dial d. 2.9 cm, overall 19.6 gms *£120 - £150*

**1015**

A yellow metal cased gentleman's automatic wristwatch by Garrard, the circular silvered dial with gold coloured baton numerals on a later leather strap, dial d. 2.8 cm, overall 37.1 gms *£150 - £200*



Lot 1010

**1010**

A part 18ct yellow gold ladies wristwatch by MuDu, the circular dial with Arabic and baton numerals on a 9ct yellow gold articulated bracelet strap, dial d. 1.2 cm, overall 10.1 gms *£250 - £300*

**1016**

A 9ct yellow gold cased ladies wristwatch by Accurist, the circular silvered dial with gold coloured baton numerals on an articulated bracelet strap, dial d. 1.8 cm, overall 25.6 gms, cased *£100 - £150*

**1017**

A ladies stainless steel cased 'Oyster Princess' self-winding wristwatch by Tudor (Rolex), the circular grey dial with baton numerals on a later expanding bracelet strap, dial d. 1.7 cm *£200 - £300*

**1011**

A 9ct yellow gold ladies wristwatch by Rotary, the circular silvered dial with baton numerals on a brick design articulated bracelet strap, dial d. 1.7 cm, overall 16.5 gms *£120 - £150*

**1018**

A gentleman's stainless steel cased automatic 'Seamaster' wristwatch by Omega, the circular blue dial with date aperture and subsidiary dials on an articulated bracelet strap, dial d. 3.4 cm *£400 - £600*

**1012**

A part 9ct yellow gold ladies wristwatch, the circular white enamel dial with black and red Arabic numerals and gold coloured dot markers on an expanding bracelet strap, dial d. 1.8 cm, overall 19.1 gms *£60 - £80*

**1013**

A part 9ct yellow gold gentleman's wristwatch by Trebex, the circular dial with gold coloured Arabic numerals and second hand section on an articulated bracelet strap, dial d. 3 cm, overall 49.8 gms *£150 - £200*



Lot 1017



**1019**

A unisex two colour stainless steel cased 'DeVille' wristwatch by Omega, the circular dial with black Roman numerals on an articulated bracelet strap, dial d. 2.7 cm *£50 - £80*

**1020**

A two colour stainless steel cased gentleman's 'Conquest' wristwatch by Longines, the circular white dial with gold coloured dot and Arabic numerals on an articulated bracelet strap, dial d. 2.7 cm, with box and guarantee dated 2005 *£100 - £150*

**1021**

A stainless steel and 18ct yellow gold gentleman's 'Santos' wristwatch by Cartier, the square dial with black Roman numerals and date aperture on an articulated bracelet strap, dial w. 1.8 cm, with box, papers and accessories *£600 - £800*



**1022**

A ladies white metal wristwatch by Hamilton, the circular dial with baton numerals within a diamond set bezel on a later strap, dial d. 2.5 cm, overall 26.4 gms *£250 - £300*

**1023**

A ladies 9ct yellow gold cased ladies 'Elite' wristwatch movement by Rotary, a part gold wristwatch by Hamilton and a ladies wristwatch by Elgin (3) *£50 - £80*



Lot 1022



Lot 1018



Lot 1015



Lot 1024

**1026**

A stainless steel gentleman's 'Formula One' wristwatch by Tag Heuer, the circular black dial with silvered numerals within an adjustable bezel on a black rubber strap, dial d. 2.8 cm

*£100 - £150*



Lot 1027

**1024**

A stainless steel gentleman's 'Roadster XL' automatic chronograph wristwatch by Cartier, the tonneau shaped dial with black Roman numerals, date aperture and subsidiary dials on an interchangeable stainless steel articulated bracelet/black leather strap, dial w. 2.8 cm, with box and papers, first registered in 2011

*£3000 - £4000*

**1027**

An 18ct yellow gold cased gentleman's wristwatch by Tissot, the circular dial with gold coloured baton numerals and date aperture on a black faux crocodile skin strap, dial d. 2.8 cm, overall 32.5 gms, with box

*£300 - £400*



Lot 1025



Lot 1028

**1025**

A stainless steel unisex 'Tank Francaise' wristwatch by Cartier, the rectangular dial with black Roman numerals and date aperture on an articulated stainless steel bracelet strap, dial w. 2 cm, with box and papers, first registered in 2003

*£1300 - £1500*

**1028**

A stainless steel and 18ct yellow gold ladies 'Santos' wristwatch by Cartier, the square dial with black Roman numerals on an articulated bracelet strap, dial w. 1.3 cm, with pouch

*£300 - £400*

**1029**

An early 20th century stainless steel cased gentleman's wristwatch by Longines, the circular dial with black Arabic numerals and second hand section on a later bracelet strap, dial d. 2.6 cm, together with four further wristwatches (5) £150 - £200

**1030**

A part 18ct yellow gold ladies wristwatch by Repco, a similar part 14ct yellow gold ladies wristwatch by Gevea and four further ladies wristwatches (6) £150 - £200

**1031**

A 9ct yellow gold cased ladies wristwatch, the oval dial with baton numerals on an articulated bracelet strap, dial w. 1.1 cm, overall 8.6 gms £60 - £100



**1032**

Of Motoring Interest: A stainless steel cased gentleman's wristwatch by Cuervo y Sobrinos, the circular silvered dial with black Arabic numerals and date aperture on a faux crocodile skin leather strap, dial d. 3.4 cm, with box and papers \*these watches were given to drivers participating in the 2018 Modena Cento Ore rally £1000 - £1500

**1033**

A 9ct yellow gold ladies wristwatch by Rotary, the circular silvered dial with gold coloured Arabic numerals on an articulated bracelet strap, dial d. 1.4 cm, overall 14.3 gms £60 - £100

**1034 - 1050**

Spare Lots

**1051**

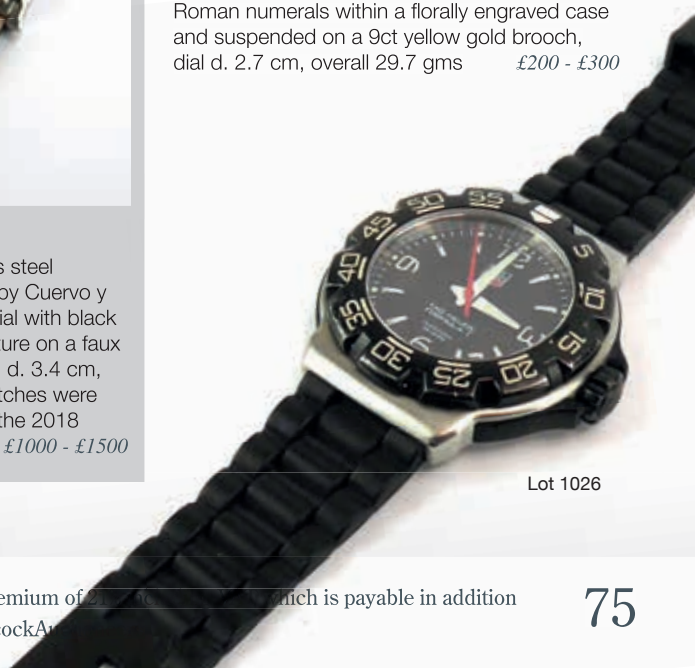
A quantity of wristwatch and pocket watch parts including movements, dials etc (qty) £40 - £60



Lot 1052

**1052**

A late 19th/early 20th century 18ct yellow gold cased fob watch, the engraved dial with black Roman numerals within a florally engraved case and suspended on a 9ct yellow gold brooch, dial d. 2.7 cm, overall 29.7 gms £200 - £300



Lot 1026



Lot 1053

### 1053

A 9ct yellow gold cased open face pocket watch by Benson, the white enamel dial with black Roman numerals and second hand section within a plain case, case hallmarked for London 1937, dial d. 4.2 cm, overall 75.9 gms, cased  
*£500 - £600*

### 1054

A Victorian silver cased open face pocket watch, the white enamel dial with black Roman numerals and second hand section, dial numbered 11047, with gilt fusee movement, case hallmarked for London 1884, dial d. 4 cm, together with a further open faced pocket watch (2)  
*£60 - £100*

### 1055

A late 19th century open face English lever pocket watch, the white enamel dial with black Roman numerals and second hand section with fusee movement within an engine turned case, case hallmarked for Chester 1886, dial d. 4.4 cm, together with a similar pocket watch (2)  
*£80 - £120*

### 1056

A Victorian silver cased open face pocket watch by Thomas Kent & Son, the white enamel dial with black Roman numerals and second hand section, with gilt fusee movement numbered 30935, case hallmarked for Birmingham 1896, dial d. 4.3 cm, suspended on a silver Albert watch chain  
*£60 - £100*

### 1057

An early 20th century silver double Albert watch chain with t-bar and medallion, together with a silver fine curb link watch chain (2)  
*£40 - £60*

### 1058

A 9ct yellow gold cased open face fob watch, the circular dial with black Roman numerals within a florally engraved case, dial d. 2.1 cm, overall 19.8 gms  
*£120 - £150*

### 1059

A 18ct yellow gold cased open face fob watch, the white enamel dial with black Roman numerals within a florally engraved case and suspended on a bar brooch, dial d. 2.9 cm, overall 42.4 gms  
*£350 - £400*

### 1060

A Mont Blanc travel timepiece in a black leather case, boxed  
*£30 - £40*



Lot 1059



### 1061

A Victorian silver pair cased pocket watch, the white enamel dial with black Roman numerals, the gilt fusee movement with verge escapement numbered 81803 within a plain case hallmarked for London 1854, dial d. 4.4 cm, together with a silver full hunter pocket watch, two further watches, chains and medallions (qty) (af)

£150 - £200

### 1062

A silver cased open face pocket watch by Fattorini & Sons, a base metal 'Railway Timekeeper' pocket watch and a further pocket watch, together with a watch chain, two propelling pencils and a silver napkin ring (qty) (af)

£70 - £90

### 1063

A yellow metal cased full hunter fob watch by Illinois, the white enamel dial with black and red Arabic numerals and second hand section within a florally engraved case, dial d. 2.7 cm

£100 - £150

### 1064

Three late 19th/early 20th century silver cased open face fob watches, three silver and metalware medallions and a gold plated watch chain (7)

£50 - £80



Lot 1063

the   
café

AT

**W&H PEACOCK**  
AUCTIONEERS & VALUERS

Eastcotts Park, Wallis Way,  
Bedford, Bedfordshire  
MK42 0PE

Visit

[www.peacockscfe.co.uk](http://www.peacockscfe.co.uk)  
for more details and to view  
our current menu.

**01234 266 366**



**View the salerooms for our upcoming auctions  
and then relax with a coffee and a slice of cake.**

Our unique café in Bedford Auction Centre with free wi-fi and views of the salerooms, comfortably seats over 100 customers.

We serve cooked breakfasts, paninis and sandwiches, light lunches and snacks plus a range of hot and cold drinks.

Open Monday to Thursday from 8.30am - 3.30pm  
Extended opening on Friday to 7pm. Saturday 8.30am - 4pm  
(Last orders 1 hour before closing)

### *watch us...*

visit our website and take a look at our Youtube video to get an understanding of our busy and exciting auction sales and other services we offer.

### *follow us...*

join us on facebook and twitter to keep upto date with forthcoming auctions, events and sale highlights. Our website is packed up to date with current auction details and important information [www.peacockauction.co.uk](http://www.peacockauction.co.uk)

### *visit us...*

Our saleroom is open for entries Monday to Wednesday, viewing every Friday with our four sales commencing at 10am each Saturday

## *Auction Highlight*



A horn handled hunting knife and sheath, the blade engraved 'From P. Ashley Cooper, Governor of the Hudson's Bay Company, 1934', overall l. 30.5 cm, together with a spear head (2)

**Hammer Price £750**

## *Forthcoming Auction*

**Antique Furniture & Collectors' Items,  
Books, Maps & Ephemera**

Friday 5th April 2019 - Bedford Auction Centre

[www.peacockauction.co.uk](http://www.peacockauction.co.uk)

## Terms used in this catalogue have the following meanings.

Please note that all statements in this catalogue, regarding authorship, attribution, origin, date, age, provenance and condition are statements of opinion and are not treated as a statement of fact.

### 1. A N ARTIST

In our opinion, the work is by the artist.

### 2. ATTRIBUTED TO A N ARTIST

In our opinion, the work is of the period of the artist which may be whole or in part the work of the artist.

### 3. STUDIO, (CIRCLE OR WORKSHOP) OF A N ARTIST

In our opinion, the work is of the period and closely relates to his style.

### 4. SCHOOL OF A N ARTIST

In our opinion, the work is by a pupil or a follower of the artist.

### 5. MANNER OF A N ARTIST

In our opinion, the work is in the style of the artist and is of a later period.

### 6. AFTER A N ARTIST

In our opinion, this work is a copy of the artist.

### 7. ASCRIBED TO A N ARTIST

In our opinion, this work is not by the artist, however, previous scholarship has noted this to be a work by the artist.

### 8. SIGNED (OR DATED)

The work has a signature (or date) which in our opinion is genuine.

### 9. BEARS SIGNATURE (OR DATE)

The work has a signature (or date) which in our opinion is not authentic.

## Hammer Prices - February 2019

1	£85	68	£400	129	£170	190	£30	263	£120	327	£65	420	£36
2	£200	69	£50	130	£440	193	£420	264	£110	328	£32	421	£70
4	£120	70	£100	131	£140	194	£400	265	£85	330	£14	422	£40
5	£50	72	£65	132	£260	195	£30	266	£40	331	£50	423	£60
6	£80	73	£140	133	£280	197	£110	267	£55	332	£130	425	£50
7	£40	74	£75	134	£380	198	£120	268	£90	333	£40	426	£70
8	£300	76	£70	135	£100	199	£45	269	£20	334	£140	427	£38
10	£75	77	£500	136	£24	201	£240	270	£140	351	£310	428	£40
11	£100	78	£110	137	£20	202	£95	271	£460	352	£24	429	£85
12	£280	79	£30	138	£45	203	£85	272	£90	353	£70	430	£100
13	£90	80	£80	139	£40	205	£280	273	£440	354	£32	431	£80
15	£160	81	£50	140	£24	206	£200	274	£200	355	£210	432	£80
16	£200	82	£55	141	£40	207	£200	275	£150	356	£75	433	£80
17	£45	83	£190	142	£40	208	£220	276	£140	358	£75	434	£85
18	£200	86	£75	143	£50	209	£200	277	£90	359	£28	435	£55
19	£90	87	£40	144	£40	210	£90	278	£130	360	£10	436	£80
20	£180	88	£65	145	£50	211	£320	279	£200	361	£80	437	£95
21	£70	89	£45	146	£120	212	£100	280	£60	362	£30	438	£100
23	£130	90	£75	148	£24	213	£170	281	£260	363	£20	439	£95
24	£220	92	£30	149	£160	214	£170	282	£310	364	£36	440	£34
25	£320	93	£150	150	£55	215	£120	283	£310	365	£40	441	£160
26	£20	94	£130	152	£60	216	£200	284	£130	366	£45	442	£28
27	£100	95	£190	153	£700	217	£95	285	£130	367	£34	443	£120
29	£320	96	£26	154	£800	218	£100	286	£50	368	£50	444	£180
30	£65	97	£300	155	£80	219	£130	287	£50	369	£30	445	£95
31	£24	99	£40	156	£120	220	£130	288	£65	370	£110	446	£170
32	£60	100	£65	157	£50	221	£75	289	£22	371	£130	447	£70
33	£170	101	£110	158	£250	222	£750	301	£90	372	£150	448	£60
34	£70	102	£30	159	£22	223	£320	303	£20	373	£190	449	£65
35	£170	103	£20	160	£90	224	£50	305	£95	374	£10	450	£70
36	£260	104	£70	162	£170	225	£240	306	£85	375	£160	451	£28
37	£100	105	£50	163	£55	226	£150	307	£100	376	£100	452	£65
38	£160	106	£70	165	£35	227	£100	308	£60	377	£65	453	£50
39	£160	107	£140	166	£60	228	£280	309	£90	378	£32	454	£80
40	£150	110	£28	167	£40	230	£110	310	£34	379	£60	455	£50
41	£70	113	£160	168	£40	231	£70	311	£38	401	£90	456	£45
43	£65	114	£40	169	£40	232	£60	312	£100	402	£500	458	£110
44	£75	115	£35	170	£300	233	£420	313	£75	404	£140	459	£80
56	£550	116	£55	171	£30	251	£38	314	£26	405	£45	460	£70
57	£400	117	£50	172	£35	252	£90	315	£14	406	£70	462	£85
58	£45	118	£100	176	£130	253	£80	317	£65	407	£60	463	£80
59	£190	119	£65	177	£20	254	£70	318	£110	409	£210	464	£80
60	£55	120	£65	178	£100	255	£70	319	£28	410	£40	465	£50
61	£60	121	£75	181	£180	256	£65	320	£50	412	£120	466	£160
62	£140	123	£170	182	£55	257	£75	321	£26	413	£70	467	£80
63	£150	124	£50	183	£100	258	£85	322	£26	414	£170	468	£36
64	£45	125	£100	184	£90	259	£85	323	£26	415	£110	469	£30
65	£280	126	£220	185	£90	260	£80	324	£26	417	£90	470	£75
66	£55	127	£130	186	£35	261	£90	325	£26	418	£90	471	£55
67	£130	128	£380	189	£50	262	£190	326	£26	419	£36	472	£60

All estimates exclude buyer's premium of 21% including VAT which is payable in addition

 @WHPeacock  /WHPeacockAuctioneers

474	£60	631	£200	713	£70	765	£190	859	£150	915	£90	971	£70
475	£80	632	£210	714	£75	766	£130	860	£650	916	£65	972	£20
476	£36	633	£200	715	£55	767	£190	861	£700	917	£130	973	£22
477	£45	634	£200	716	£75	768	£260	862	£750	918	£30	974	£110
478	£45	635	£170	717	£90	769	£180	863	£1,100	919	£90	975	£40
479	£65	636	£170	718	£160	770	£210	864	£160	921	£90	976	£150
480	£50	637	£130	719	£210	771	£200	865	£90	922	£35	977	£26
481	£65	638	£150	720	£220	772	£100	866	£80	924	£110	978	£210
483	£75	639	£95	721	£50	773	£150	867	£80	925	£150	979	£80
484	£70	640	£80	722	£150	774	£120	868	£80	926	£70	980	£80
485	£60	641	£80	723	£220	775	£170	869	£20	927	£80	981	£110
486	£270	643	£100	724	£130	776	£120	870	£80	928	£100	983	£95
487	£90	644	£85	725	£120	777	£160	871	£60	929	£160	984	£85
488	£70	645	£160	726	£140	778	£180	872	£210	930	£80	985	£45
491	£150	646	£190	727	£140	779	£290	873	£240	931	£50	986	£95
492	£55	647	£95	728	£130	780	£95	874	£290	932	£55	987	£120
493	£32	648	£100	729	£140	781	£160	875	£320	933	£95	1001	£290
495	£55	649	£190	730	£160	782	£70	876	£150	934	£85	1002	£360
496	£50	650	£170	731	£100	783	£750	877	£190	935	£100	1003	£100
591	£550	651	£260	732	£140	784	£80	878	£230	936	£120	1004	£50
592	£70	652	£95	733	£190	785	£110	879	£170	937	£290	1005	£100
593	£14	653	£130	734	£140	786	£75	880	£85	938	£160	1006	£28
594	£60	654	£120	735	£160	787	£45	881	£240	939	£110	1007	£60
595	£75	655	£110	736	£120	788	£120	882	£50	940	£95	1008	£35
601	£220	656	£200	737	£70	789	£55	883	£200	941	£35	1009	£30
603	£160	657	£250	738	£140	790	£20	884	£140	943	£100	1010	£30
604	£280	658	£200	739	£150	791	£100	885	£1,100	944	£120	1011	£30
606	£270	659	£220	740	£120	792	£45	889	£100	945	£45	1012	£50
607	£220	660	£240	741	£120	793	£75	890	£20	946	£70	1013	£40
608	£200	661	£150	742	£220	794	£55	891	£50	947	£120	1014	£35
609	£200	662	£340	743	£100	795	£150	892	£85	948	£100	1015	£50
610	£210	663	£160	744	£150	796	£280	893	£40	949	£95	1016	£120
611	£290	664	£210	745	£120	797	£150	894	£80	950	£55	1017	£40
612	£200	665	£150	746	£100	798	£85	895	£140	951	£80	1018	£35
613	£150	666	£200	747	£210	799	£120	896	£85	953	£120	1019	£30
614	£130	667	£180	748	£160	800	£200	897	£55	954	£170	1020	£35
615	£75	668	£110	749	£110	801	£160	898	£70	955	£270	1021	£40
616	£180	669	£150	750	£65	802	£120	899	£60	956	£150	1022	£40
617	£160	670	£110	751	£200	803	£85	900	£160	957	£160	1023	£40
618	£60	671	£65	752	£180	804	£190	902	£130	958	£45	1024	£45
619	£65	701	£75	753	£230	805	£90	903	£110	959	£40	1025	£30
620	£360	702	£100	754	£160	806	£150	904	£65	960	£190	1026	£70
621	£270	703	£70	755	£190	807	£100	905	£110	961	£240	1027	£45
622	£110	704	£60	756	£140	808	£24	906	£130	962	£55	1028	£45
623	£95	705	£110	757	£200	851	£200	907	£60	963	£35	1029	£50
624	£85	706	£70	758	£75	852	£250	908	£35	964	£55	1030	£45
625	£150	707	£75	759	£200	853	£220	909	£35	965	£20	1031	£290
626	£150	708	£95	760	£250	854	£230	910	£85	966	£40	1032	£75
627	£45	709	£85	761	£210	855	£250	911	£140	967	£150	1033	£120
628	£230	710	£85	762	£230	856	£240	912	£45	968	£50	1034	£90
629	£190	711	£110	763	£210	857	£240	913	£55	969	£65	1035	£80
630	£210	712	£110	764	£170	858	£200	914	£55	970	£90	1036	£100