

TRUfusion™ Enterprise Teamcenter® Integration



TRUBIQUITY®

Combine automated file transfer functionalities with the Teamcenter® PLM solution

Are you looking to:

- ▶ Benefit from the integration of TRUfusion™ Enterprise and the Teamcenter® PLM system to automate and streamline your product design data exchange processes?
- ▶ Connect these two enterprise systems and use only one user interface?
- ▶ Integrate automated product data exchange with Teamcenter® workflows?
- ▶ Review the status of your data exchange transactions without leaving Teamcenter®?
- ▶ Increase user productivity by avoiding manual steps when sending product design data to customers and suppliers?



Realize Automated Internal and External Data Exchange Within the Teamcenter® PLM Solution

Many companies have invested in Teamcenter® to manage their product design data.

This integration combines the benefits of this solution with those of TRUfusion™ Enterprise which is used to automate, control and manage the distribution of product data and related documents both internally within an enterprise and externally to customers, partners and suppliers.

Teamcenter®

Teamcenter® is a scalable PLM solution to manage product design data from early concept design right through to the manufacturing phases.

TRUfusion™ Enterprise

TRUfusion™ Enterprise automates the manual importing, exporting, transformation, encryption and transportation of product design data. It enables global data exchange with all business partners. TRUfusion™ Enterprise manages all backend data transformations and transfers while automatically storing details on all data exchange activities. Often more than 80% less time is needed with an automated process compared to manual processes for product design data exchange. This helps companies improve employee productivity and speed up decision making in their extended enterprise activities.

Integrate Both Systems - Improve, Simplify and Automate Design Collaboration Processes

With the integration of Teamcenter® and TRUfusion™ Enterprise,

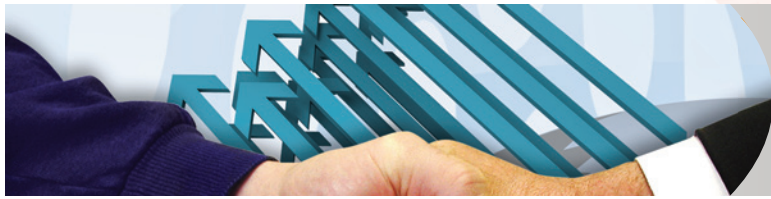


Trubiquity now provides the opportunity to use the functionalities of both systems at the same time. This means that you are able to benefit from TRUfusion™ Enterprise functions within the Teamcenter® user interface without the need to use two solutions one after the other to achieve the task. Product design data exchanges can be executed within Teamcenter® directly without any manual intervention while TRUfusion™ Enterprise works in batch mode in the background to guarantee reliable execution of necessary automated steps to deliver the right data, in the right format and at the right time.

An Integration to Provide New Functionalities

The integration of these two solutions enables users to exchange parts, assemblies, drawings and other related documents that the user has permission to access within the PLM system. Data exchanges can be executed using either the Teamcenter® web or rich client user interface.

Product structures can be reviewed before they are exported or imported with the option for defining partner specific rules. The combination of Teamcenter® and



TRUfusion™ Enterprise and Teamcenter®

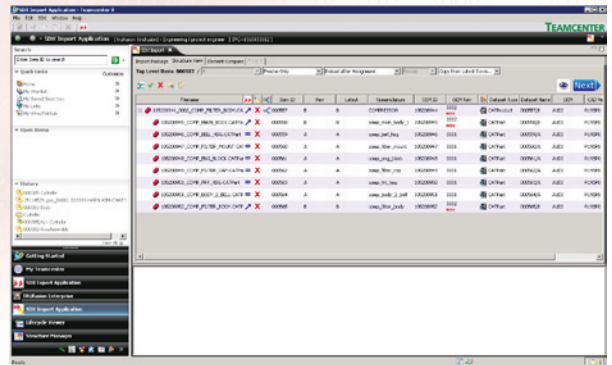
TRUBIQUITY®

Combine automated file transfer functionalities with the Teamcenter® PLM solution

TRUfusion™ Enterprise, together with the bi-directional data exchange capabilities, shortens and simplifies all processes with the confidence that all transactions are recorded for audit trail and compliance requirements.

For data export out of Teamcenter®:

- ▶ Selection of CAD and related datasets (e.g. NX, CATIA V5, JT and Microsoft® Office documents) to be exported using the “Send To” functionality “Export to TRUfusion”
- ▶ Data may be selected for export, previewed and then specific items can be removed
- ▶ Multi-level controls of item revisions owners, project environments and object status before export
- ▶ CAD data can be renamed according to partner specific naming conventions
- ▶ The TRUfusion™ Enterprise user interface allows the selection of the recipients and the option to add files from the file system to the export job
- ▶ Data is processed, sent and archived using TRUfusion™ Enterprise core functionality and as a background batch process
- ▶ The export job information is recorded in Teamcenter® for user access and review



For data import to Teamcenter®:

- ▶ Automatic CAD and related datasets receipt by TRUfusion™ Enterprise
- ▶ Extraction of CAD assembly data upon receipt
- ▶ Selection of the data to be imported is made within the Teamcenter® user interface
- ▶ Import data can be previewed together with CAD structure matching with data already stored in Teamcenter®
- ▶ Import data can be renamed according to Teamcenter® naming conventions
- ▶ Data import conflict resolution options by creating new items or new revisions of existing items
- ▶ The import job information is recorded in Teamcenter® for user access and review

*Teamcenter® is a registered trademark of Siemens

Trubiquity is a leading global provider of MFT (managed file transfer), process automation and integration solutions for 6,500 companies with 60,000 users in more than 40 countries. For more than 25 years, we have served the automotive, aerospace, manufacturing, retail, finance, healthcare and consumer goods industries. Trubiquity solutions improve our customers' ability to control and protect data within their business and among external partners. Trubiquity is headquartered in Troy, Michigan, USA with facilities in California and international offices in Germany and the United Kingdom. For more information, visit www.trubiquity.com.

Michigan Office (HQ)
5480 Corporate Dr
Suite 300
Troy, MI 48098
+1 248 833.9000

California Office
6005 Hidden Valley Rd.
Suite 230
Carlsbad, CA 92011
+1 760 929.0829

UK Office
Suite 2, 3rd Floor
Goodbard House
Infirmary Street, Leeds, LS1 2JS
+44 (0) 113 245.4305

Germany Office
Dynamostraße 3
68165 Mannheim, Germany
+49 (0) 621 39155.0



www.trubiquity.com
sales@trubiquity.com