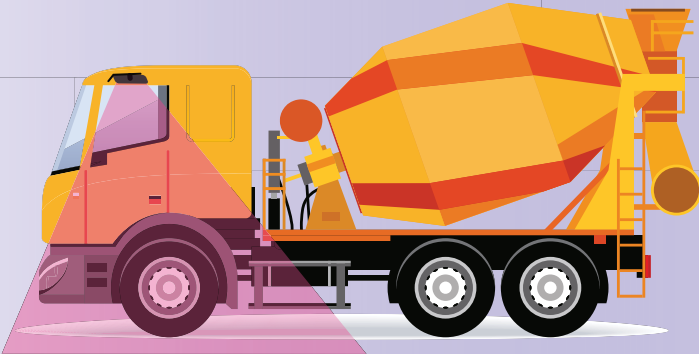


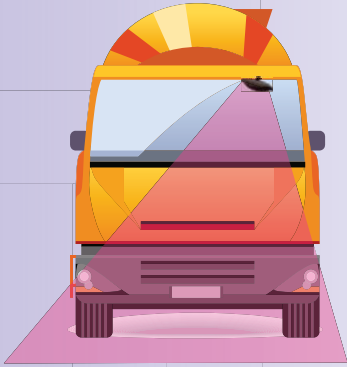
# Safer Lorry Scheme for Loodoo

ID:A00159

Accidents and fatalities involving vulnerable road users remain stubbornly high. So, by the 1st of September 2015 most vehicles over 3.5 tonnes that are currently exempt from national legislation for basic safety equipment will have to be retrofitted with Class V and Class VI mirrors. These are the over door, kerb, mirror and the front view mirror that goes over the windscreen and allows visibility across the front of the truck. It is hoped this will increase visibility and reduce the number of accidents.



Position of class V mirror



Position of class VI mirror

This scheme is designed to bring all vehicles up to the standards of new build trucks. It will be administered by the Police and DVLA with fixed penalty notices for £50, rising to a £1000 fine at a magistrate's court, issued for non-compliance. The Traffic Commissioner also has the power to modify, or suspend, operator licenses of non-compliant companies.



## How to stay compliant - A Class V mirror solution

Ashtree have a range of universal, cost effective, solutions. Part number M430CEA1, see image to the left, is a universal class V mirror. Approved to the latest standards it can be mounted, using the arm supplied, over the door to give visibility in the driver's blind spot.

**Technical details:**  
 Part number: M430CEA1  
 Dimensions: 240mm x 155mm  
 Radius of curvature: 300mm  
 Mirror arm will fit: 2 X M6 slots at 40-60mm centres  
 Approval numbers: e11 IV & V 03\*6404

For advice on what mirrors may suit your vehicles please phone 020 8644 2700

# How to stay compliant - Class VI mirror solutions

## MX550CFA3



*Unbreakable lens. Universal class VI mirror kit complete with arm and mounting bracket suitable for vertical or horizontal fitment.*

## MX550CFA



*The MX550CEA comes complete with the S1091 arm. This is 440mm long and is 19mm in diameter. The clamp will fit arms of 16-28mm. This arm is available as a separate component.*

## New Product

## M5601CFA3



*Universal class VI mirror complete with arm and mounting bracket. The bracket is suitable for vertical or horizontal fitment.*

## M5601CFA



*The M5601CEA comes complete with the S1091 mirror arm. This is 440mm long and is 19mm in diameter. The clamp will fit mirror arms of 16-28mm in diameter.*

### Technical details:

Part numbers MX550CEA3 and MX550CEA.

**Mirror dimensions:** 293mm x 210mm  
**Radius of curvature:** 250mm  
**Approval numbers:** e11 VI 03\*6447

Part numbers M5601CEA3 and M5601CEA

**Mirror dimensions:** 255mm in diameter  
**Radius of curvature:** 315mm  
**Approval numbers:** VI 46R 048505