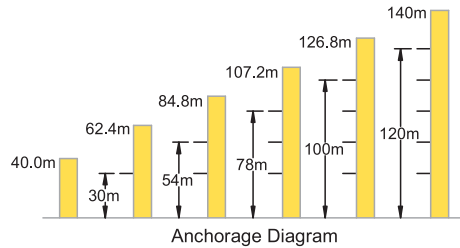


**TC 5040-T Flat Top Tower Crane** **5 t**

**Load Capacity**

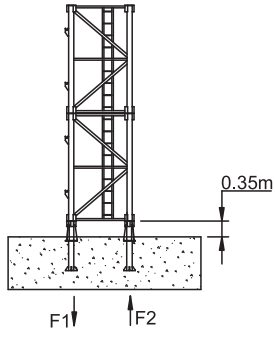
Jib Length 50m	Radius (m)	2.8~15	18	20	22	25	28	30	32	35	38	40	42	45	48	50
	Hoisting Load (t)	5.00	4.51	3.87	3.54	2.98	2.62	2.39	2.21	1.91	1.75	1.66	1.52	1.42	1.30	1.23
Jib Length 45m,40m	Radius (m)	2.8~15	18	20	22	25	28	30	32	35	38	40	42	45		
	Hoisting Load (t)	5.00	4.62	4.12	3.63	3.17	2.70	2.55	2.31	2.11	1.82	1.78	1.60	1.53		
Jib Length 35m	Radius (m)	2.8~18	20	22	25	28	30	32	35							
	Hoisting Load (t)	5.00	4.42	3.91	3.41	3.01	2.75	2.55	2.28							
Jib Length 30m,25m, 20m	Radius (m)	2.8~18	20	22	25	28	30									
	Hoisting Load (t)	5.00	4.70	4.26	3.63	3.21	2.93									



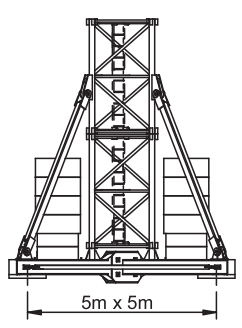
**Specifications**

Hoisting	No of Falls	3	4	5	6		
	Speed (m/min)	11.75	40	80	5.87	20	40
	Hoisting Load (t)	2.5	2.5	1.28	5	5	2.56
	Power (kw)	5	18	18	5	18	18
Stewing	Speed(rpm)	0 ~ 0.6					
	Power(kw)	5.5					
Trolley	Speed(m/min)	40		20			
	Power(kw)	3.3		2.2			
Climbing	Speed(m/min)	0.55 - 0.7					
	Power(kw)	5.5					
Main Supply	415V / 50Hz						
Electric Power	26.8kw (33.5 kVA)						
Variant Model	6 Ton Max. Capacity Mechanism at 14.16m						

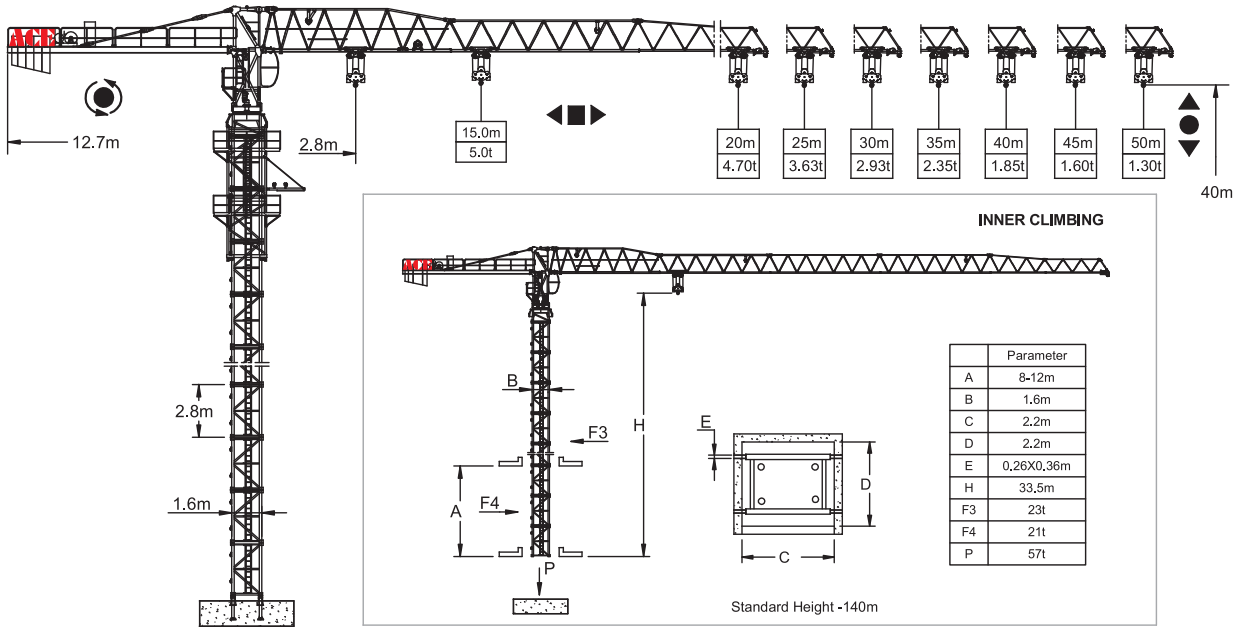
Outrigger Stationary



Chassis Stationary/Rail Mounted



F1	◇ 59t	△ 75t	⊕ 32.0t
F2	◇ 81t	△ 97t	



F Reaction ◇ In Service △ Out of Service ⊕ Dead weight without load and counter weights but with longest jib and free standing height.  
P - Vertical Load