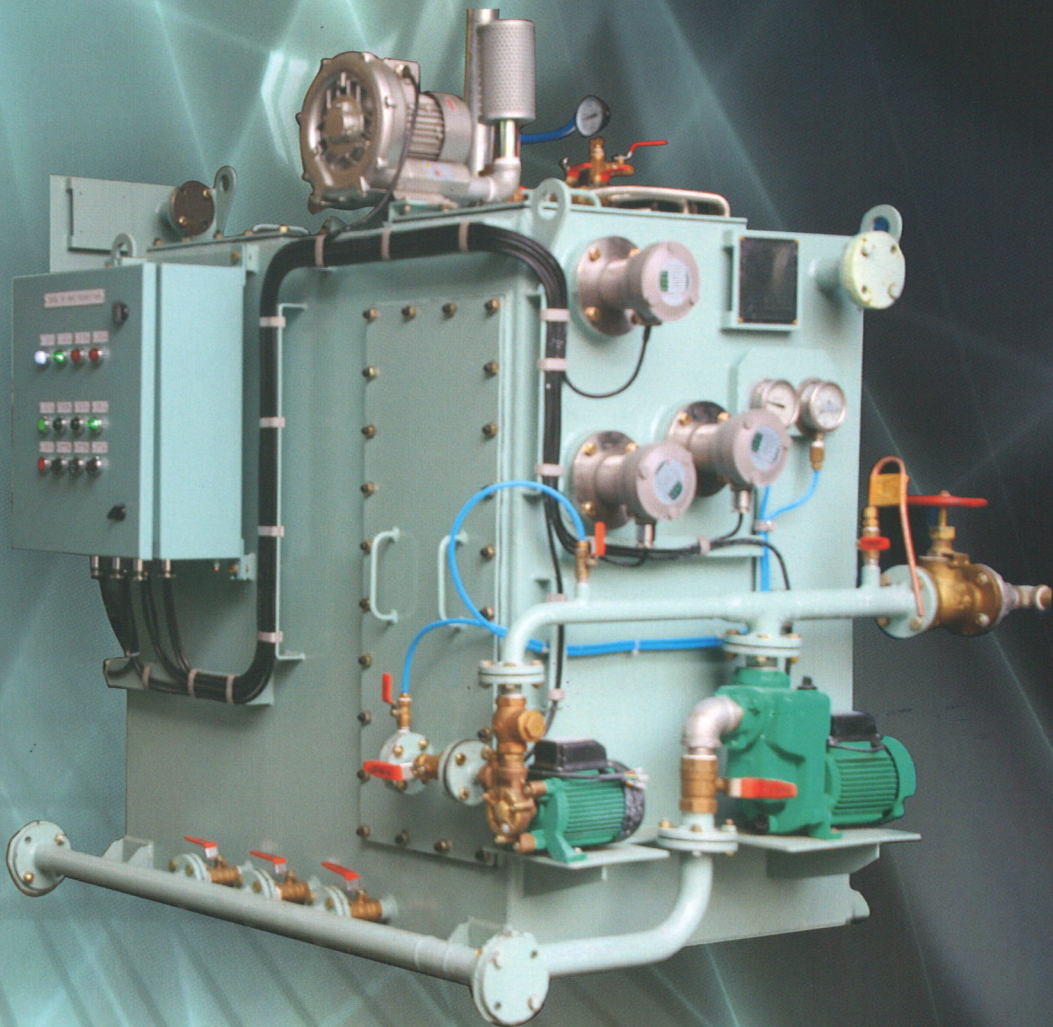




# SEWAGE TREATMENT PLANT

IMO Resolution MEPC.227(64)



**HAN YOUNG ENGINEERING CO., LTD.**



## COMPANY HISTORY

- 1 Jul. 1982 Established at Incheon.
- 2 Sep. 1994 Obtained Type Approval Certificated of 6 kind oil filtering Equipment in accordance with part 1 of the Annex to resolution MEPC. 60(33) Resolution MEPC. 107(49) from DNV. (HYN00000 : series type 8 sets)
- 3 Apr. 2006 Acquired EC Type Certificated for 15ppm Bilge separator in accordance with IMO Resolution MEPC. 107(49) from DNV. (HYN00001) : series type 8 sets)
- 4 Sep. 2007 Developed Sewage Treatment Plant. With Ino Pesohit
- 5 2016 Developed Swage (MEPC 227(64))

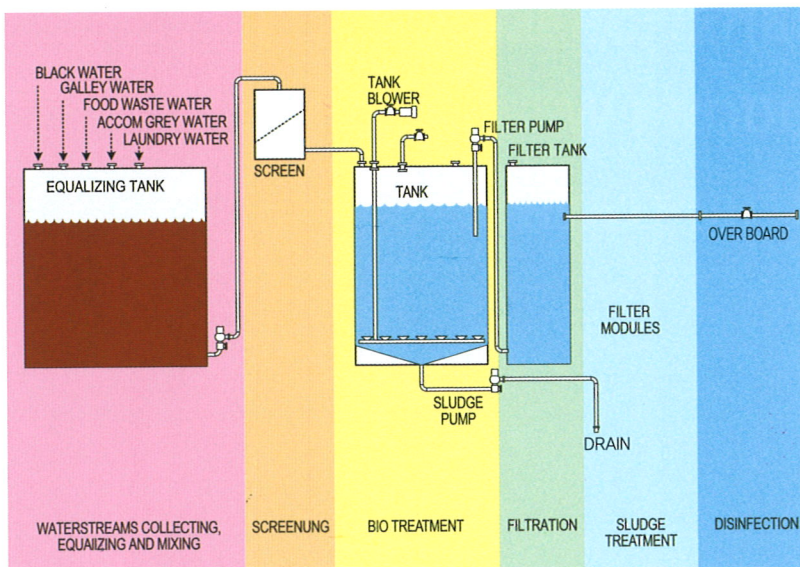


## PRODUCTS

- 15ppm Bilge Separator (IMO-MEPC 107(49) EC-Type Approved / MED-CERT)
- Sewage Treatment Plant in accordance With IMO Resolution MEPC 227(64)
- 15ppm Bilge alarm (IMO-MEPC 107(49) Type Approved)
- Coalescer filter, NF filter cortridge with Motor / Pump: Mono & Piston type



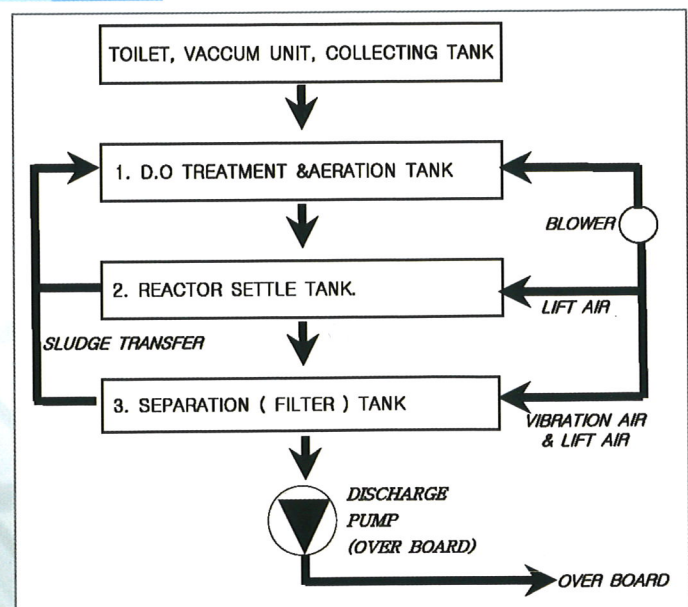
## SEWAGE TREATMENT PLANT



### MEPC 227(64)

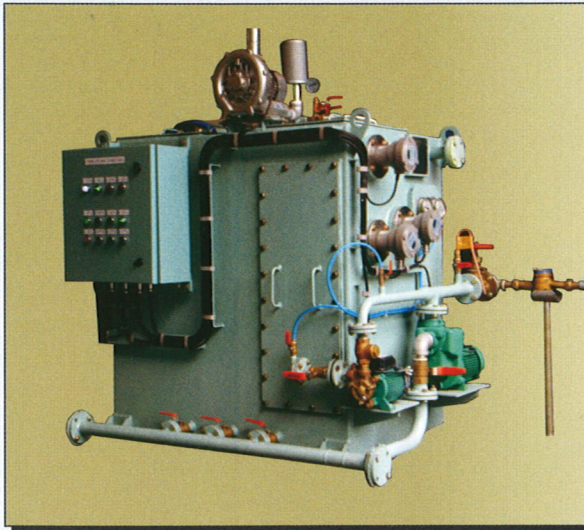
### NEW PRODUCT

### “HYSTPNS” SERIES

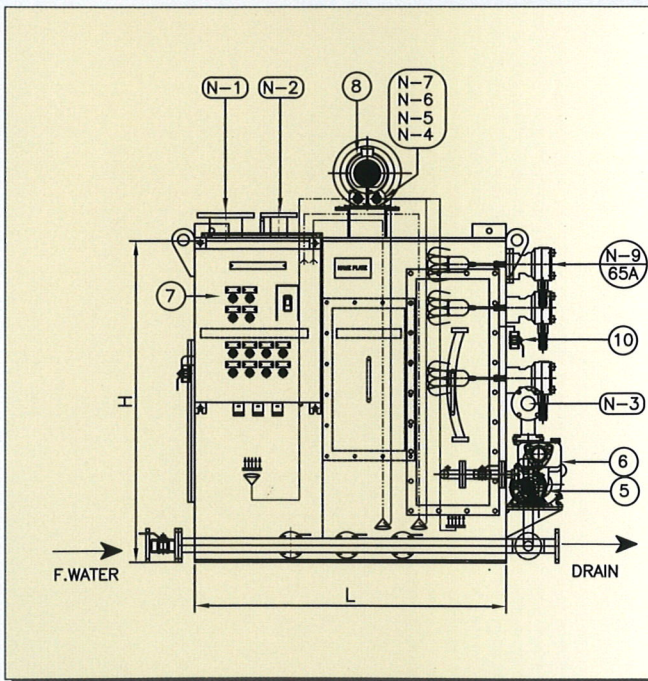


# SEWAGE TREATMENT PLANT

IMO Resolution MEPC 227(64)

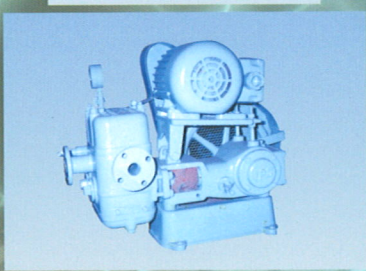
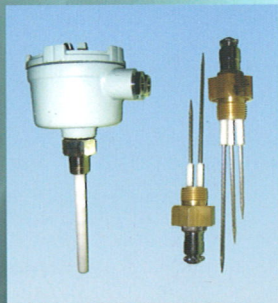
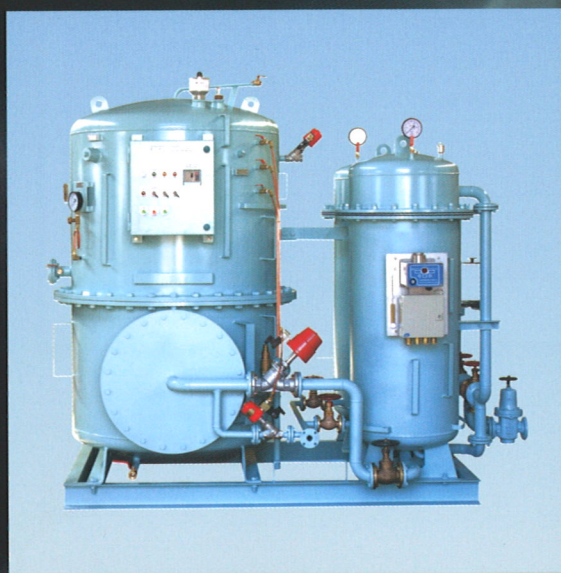
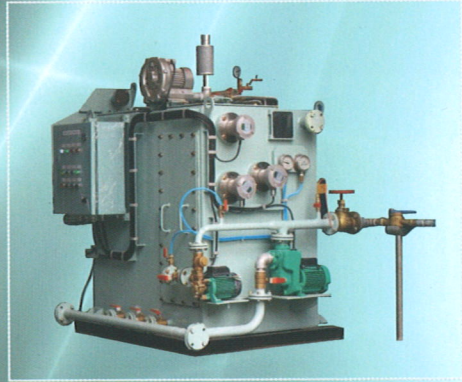
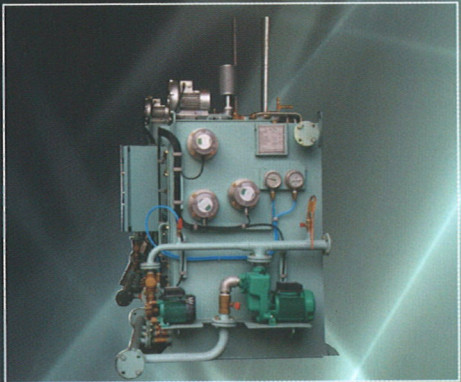
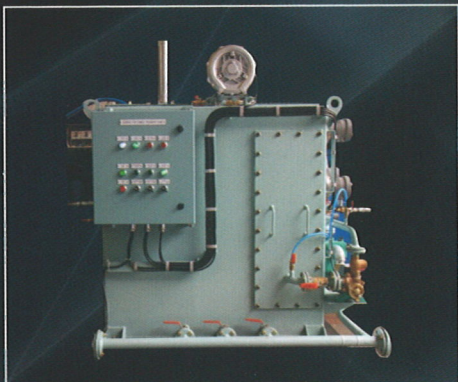


- ① 저렴한 가격 (Competitive Price)
- ② 적은 설치공간 (Small Installation Area)
- ③ 쉬운 유지 보수 (Easy Maintenance)
- ④ 운용의 편리함 (Good Operation)
- ⑤ Service Network



10	PT 1/2"	4	BALL VALVE(SAMPLING)	BRASS	STPN-010
8	AC220V, 60HZ	1	BLOWER	AL, SS400	STPN-008
7	450x500	1	CONTROL PANLE	SS400	STPN-007
6	AC220V, 3PH	1	SLUDGE PUMP	FOR DRAIN	STPN-006
5	AC220V, 3PH	1	DISCHARGE PUMP	AL, SS400	STPN-005
N-9	5K-65A	3	FLOAT LEVEL SWITCH	AC220V.	STPN-N09
N-7	PT 1/2"	1	AIR INLET		STPN-N07
N-6	PT 1/2"	1	AIR INLET		STPN-N06
N-5	PT 1/2"	1	AIR INLET		STPN-N05
N-4	PT 1/2"	1	AIR INLET		STPN-N04
N-3	5K-25A	1	DISCHARGE	* YARD(25A)	STPN-N03
N-2	5K-50A	1	VENT	* YARD(50A)	STPN-N02
N-1	5K-100A	1	FILLING	* YARD(100A)	STPN-N01
NO.	SIZE	Q'TY	DESCRIPTION	REMARK	ORDER NO

No	Model	Capacity (L/Day)	Persons		Volume (W×L×Hmm)	Total Weight (kg)	
			Block	Block+Gray		Dry(Net)	Operation(Filled)
01	HYSTPN016	1050	16	8	900x700x1100	340	969
02	HYSTPN025	1750	25	13	1100x750x1150	450	1360
03	HYSTPN040	2800	40	20	1350x850x1250	550	1965
04	HYSTPN060	4200	60	30	1600x950x1350	650	2750




**HAN YOUNG ENGINEERING CO., LTD.**  
 HEAD OFFICE : #1009, BYUNGDONG-LI, HANLIM MYUN, KIMHAE,  
 & FACTORY KYONG-NAM, 621-873 KOREA.  
 TEL. +82-55-345-2933 FAX. +82-55-345-1684  
 E-mail:hyows@unitel.co.kr