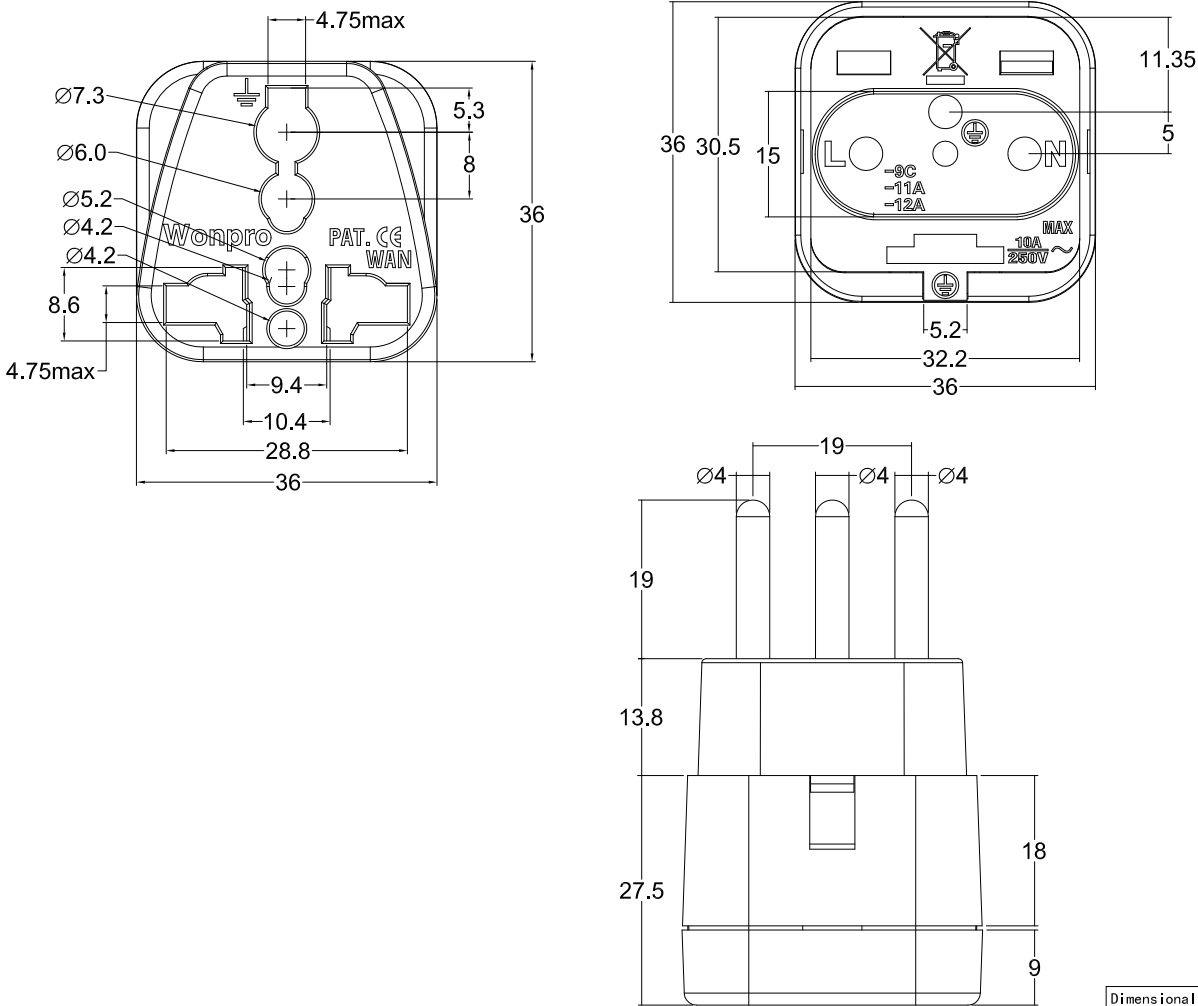


Wonpro®

Specification Recognition

Customer (客戶名稱)	Spec.No. (承認書編號)	Version (版本)
Prod.Series (系列名稱)	P1-11	VER : A1 2019.11.26
WAN Series (WAN系列)		

Model Number (型號)	Rated (額定)	Insulated Voltage Proof (耐壓)
WAN-11A	10A/250V~	2KV



Main Material (主要材質)

NO.	Parts Name (細部名稱)	Material (材質)	Specification (規格)	Certification (安規認證)
1.	Enclosure (外壳)	PC	PC-110	UL E56070
2.	Plug plate (脚板)	PC	PC-110	UL E56070
3.	Plug pins (圓插腳)	Brass	C-3604 H59	GB/T2059-2008
4.	Terminal (端子)	Brass	C-2800 H62	GB/T2059-2008
5.				
6.				

Per Packing Case (每一包裝外箱)

Packing Mode (包裝方式)	Q'TY (數量)	N.W. (淨重)	G.W. (毛重)	CUFT (材積)
Box: pcs/box (盒裝: 个/盒)				
Box/Carton (盒/箱)				
storage conditions (儲存条件)	In the normal Indoor temperature(-5~40°C) 一般室内环境温度(-5~40°C)		relative humidity(RH):20%~70% 相对湿度 (20%~70%)	



Caution (注意事項)

1.IT DOSE NOT PERFORM VOLTAGE STEP-UP OR STEP-DOWN CONVERSION BETWEEN 125V AND 250V.
(本產品無電壓轉換之功能)
2.WHEN USE,PLEASE CHECK AND ENSURE YOUR ELECTRONICS APPARATUS CAN WORK WITH THE LOCAL VOLTAGE.
(使用本產品時,請確認你的電器產品是否適用於當地電壓)
3.WHEN MARK WITH INPUT 100V-240V,IT CAN BE USED ON THE RECHARGER LIKE PORTABLE COMPUTER,MOBILE PHONE & DIGITAL CAMERA.NO NECESS SELECT THE VOLTAGE.
(一般常用之手提電腦行動電話,數位相機之充電器若有標示INPUT 100-240即可使用,無需選擇電壓)
4.WHEN DO NOT USE,PLEASE TAKE OFF AND DO NOT STAY ON THE RECEPTACLE FOR SAFE PURPOSE.
(不使用時請勿將產品留在插座上,以確保安全)

Manufacturer : YANG JI CO.,LTD
Tel : (886-2)8912-1212 Fax:(886-2)8912-1218
Address : 3F., No. 120, Ln. 235, Baoqiao Rd., Xindian Dist.,
New Taipei City 23145, Taiwan (R.O.C.)
Web Site : www.wonpro.com E-Mail: wonpro@wonpro.com
製造商 : 洋基科技有限公司
電話 : (886-2)8912-1212 傳真 : (886-2)8912-1218
地址 : 23145新北市新店區寶橋路235巷120號3樓
網址 : www.wonpro.com 電子信箱: wonpro@wonpro.com

Model Number (型號)	WAN-11A	Description (品名)	Universal Adapter: 2P+E Ground (萬用轉接器: 2P+E接地型)	Safety Certification	Quality Certification
Suitable for Area (適用國家)	Switzerland.(Inlay WANY) 瑞士.(嵌入式)				
制 作	钟亚红	审 核	吴祖林	批 准	邱明文