



EVR also manufactures Pinch Valve Replacement Sleeves for the following valves:

RKL Control:

Models LAF, LHW, KFR, KEFR, and SG

ONYX Valve:

Models CHP, CHR, DHC, OHO, and DHA

Flexible Valve Corp:

Models 2100, 2200, 7250, and 9500

Red Valve:

Models Type A, S-5200, S-70, S-75, S-5800, and S-2600

Larox:

Models LX1 and LX2

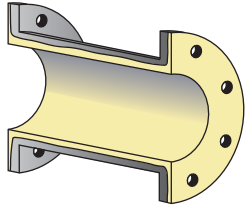
Jaco/Linatex:

Models Type RT, Type ST, Type R. end Type S

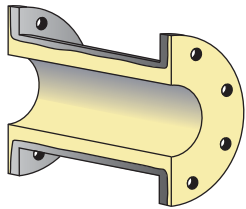
The most critical part of any pinch valve is the sleeve. The elastomer tube must be carefully chosen to match the service conditions. Scientifically designed reinforcements ensure long life at stress points and guaranteed burst ratings in excess of four times working pressure.

Where frequent sleeve failure occurs, sleeves can often be designed to compensate for problem areas. EVR replacement sleeves are available for all popular makes of pinch valves and, in most cases, will outperform the original equipment. Unusual or non-standard sleeves can be custom built to customer specifications.

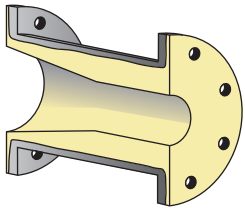
Replacement sleeves for popular EVR valves are typically in stock for immediate shipment. Less popular and custom sleeves are typically shipped in 2-3 weeks, but in emergencies can be ready within 2 business days.



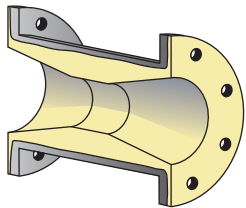
Standard Sleeve - EVR's standard sleeve is designed to allow a full port, uninterrupted process flow. Available in a wide variety of elastomers, the standard sleeve delivers durable, reliable performance.



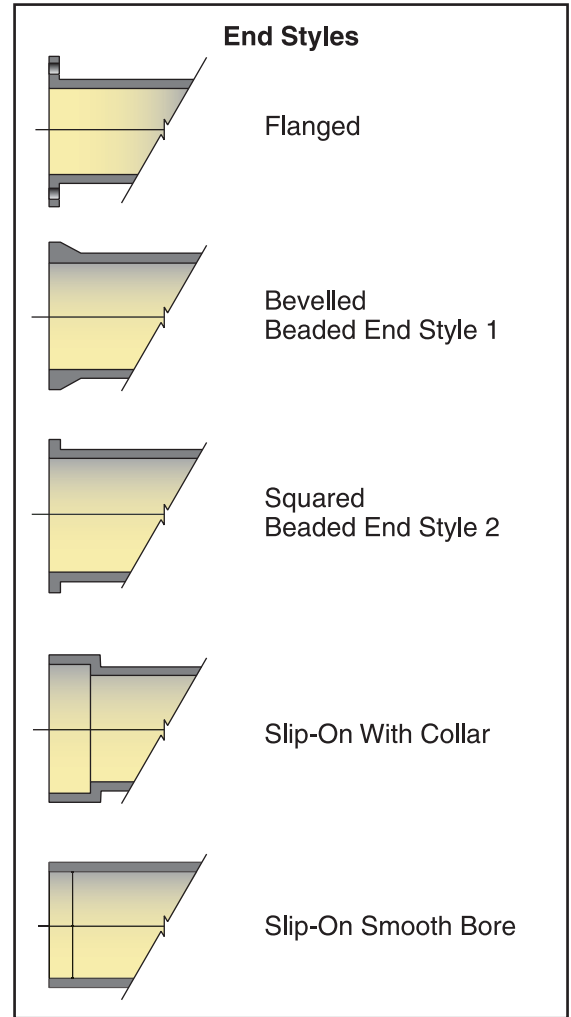
Double Wall Sleeve - Designed for heavy duty service, the double wall sleeve has an elastomer layer that is much thicker than EVR's standard replacement sleeve.



Funnel Sleeve - The funnel sleeve is mainly used in conjunction with the pinch valve for control situations. The extra thick layer of elastomer on the downstream side increases the sleeve's service time.



Reduced Port Sleeve - Reduced port sleeves are used in control applications where material flow needs to be slowed down as it passes through the valve. These sleeves also make the valve easier to close by reducing port size at the pinching area.



WARRANTY

All products manufactured by Elasto-Valve Rubber Products Inc. (EVR) are guaranteed against defects resulting from faulty workmanship or materials for one (1) year from date of shipment to Buyer. If any such product is found to be defective by reason of faulty workmanship or materials, then upon written notice and return of the product, and at EVR's sole discretion, the defective product will be replaced or repaired by EVR free of charge at EVR's factory. Claims for labour costs and other expenses required to replace and/or transport such defective product or to repair damage resulting from the use thereof will not be allowed by EVR. Our liability does not include consequential damages and is limited to the price paid for the defective product. EVR shall not be bound by any other warranty other than the above set forth unless such warranty shall be agreed in writing by EVR. All EVR literature is published in good faith and is believed to be reliable at time of print; however, due to product design changes EVR reserves the right to make alterations from published materials at any time. Formal approval drawings are available to confirm individual products upon request at time of order.

Distributed by:

ELASTO-VALVE RUBBER PRODUCTS INC.

1691 Pioneer Road, Sudbury,
Ontario Canada P3G 1B2
Tel. (705)523-2026 - Fax. (705)523-2083
Website: www.evrproducts.com
E-mail: sales@evrproducts.com

ISO 9001 Certified

