



BlephEx™

Healthy Lids for Life!

PATIENT GUIDE



DELIVERING INNOVATION

WHY BLEPHEX?

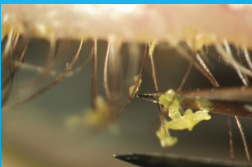


This painless procedure carried out by your eye hygiene professional is most beneficial for anyone suffering from:

- Dry Eye Disease
- Contact Lens Discomfort
- Meibomian Gland Dysfunction
- Blepharitis



Before



After



Visit www.blephexlids.co.uk
to find your nearest treatment centre



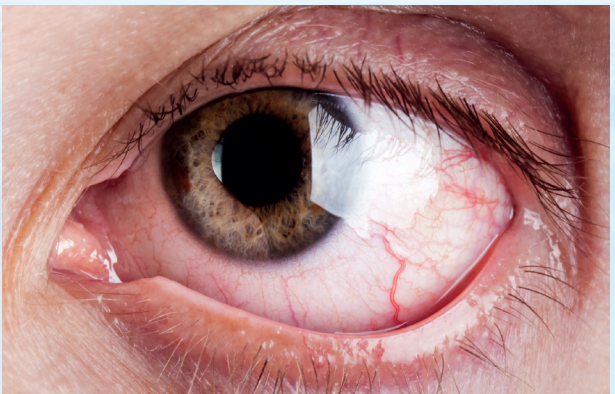
BLEPHEX - HEALTHY LIDS

WHY ARE OUR TEARS IMPORTANT?

- keeping the eyes comfortable
- protecting surface of eye by removing debris
- making a smooth surface for clear vision

Without quality tear, eyes can become red and uncomfortable, feeling itchy or gritty, especially if you wear contact lenses.

When the surface of the eye (or the contact lens) is drier than normal, the eyelids move across it and pick up the debris and bugs which haven't been washed away, much like the windscreen wipers on a dry windscreen.



*Demodex are parasitic mites living in and around the hair follicles thriving on the b effectively removes their food source and helps deal with an infestation.

S FOR LIFE!

Debris builds up on the eyelids over weeks, hardening and forming a layer similar to plaque on teeth. This debris blocks the oil glands, allowing bacteria and Demodex* mites to thrive in the area and cause further complications.

WHAT WILL A BLEPHEX TREATMENT DO?

During a Blephex procedure a soft, medical grade sponge is moved across the eyelids whilst it spins to effectively remove debris and bacteria that have caused blockages of the glands around the eyelids. These glands produce oils, that are essential to keep the surface of the eye well lubricated with quality tears.

Similar to a dental hygienist removing plaque, Blephex gently unblocks the the oil glands, effectively removing the debris for clean, clear and comfortable eyes.



biofilm build up. They block follicles and increase eyelid inflammation. Blephex

AFTER BLEPHEX TREATMENT

After the Blephex procedure, your eyes will feel much cleaner and vision can improve. If you wear contact lenses you may notice increased comfort for more of the day.



In between treatments, your eyecare professional will recommend the best way to care for your eyelids and keep them clear for as long as possible. This may include using eye drops, cleansing wipes, heat therapy or omega oils. A repeat Blephex treatment is usually needed once or twice a year.



Visit www.blephexlids.co.uk
to find your nearest treatment centre

Recommended ongoing treatment:

Grading:

Blephex procedure appointment date:

Time:

Please come to your appointment without eye make up

Crawley - UK Offices

call: 0800 270 0253
email: info@scopeophthalmics.com
visit: www.blephexlids.co.uk

Dublin - Ireland Offices

call: 1800 816 005



SCOPEUK0060