



LOCKE & ENGLAND

AUCTIONEERS & VALUERS

SEPTEMBER SALE OF

SELECTED ANTIQUE FURNITURE & COLLECTORS' ITEMS, COLLECTABLE TOYS

VIEWING

Saturday 22nd September
10.00 am - 2.00 pm

Tuesday 25th September
9.00 am - 5.00 pm

Wednesday 26th September
9.00 am - 7.00 pm

Morning of the sale
from 9.00 am

AUCTION

**Antique Furniture &
Collectors' Items**

Thursday 27th September 2018
Commencing at 11.00 am

Collectable Toys

Thursday 26th July 2018
Commencing at 2.00 pm

Leamington Spa Auction Centre

CATALOGUES

£5 by post,
online at www.leauction.co.uk

LIVE INTERNET BIDDING

Live internet bidding available via

the saleroom
The home of art & antique auctions



LOCKE & ENGLAND

AUCTIONEERS & VALUERS

Weekly Thursday Sales

TO INCLUDE (SUBJECT TO DELIVERY)

Antique & Modern Furniture • Clocks • Books
Ceramics & Glassware • Pictures & Prints • Bicycles
Jewellery & Watches • Garage Tools & Equipment
Household Electrical Items • Building Reclaims
Office Furniture & Equipment • Retail Products & Stock
Horticultural & Commercial Equipment • Vehicles
Garden Furniture & Effects • Collectables

Entries Invited

**Friday & Monday 8.30am - 5.30pm
and Tuesday by appointment**

Leamington Spa Auction Centre 12 Guy Street, Leamington Spa, CV32 4RT
01926 889 100 or info@leauction.co.uk

www.leauction.co.uk

FURNITURE, RUGS
& CLOCKS



FURNITURE, RUGS & CLOCKS

1

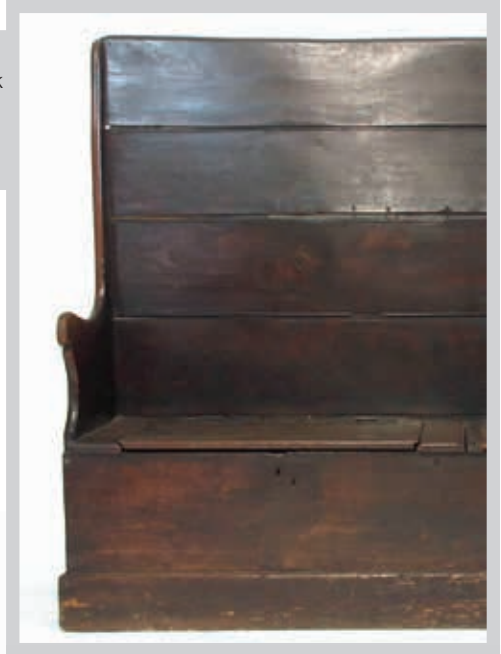
An 18th century elm settle, the planked back over two lift up seat storage compartments on plinth base, h. 136 cm, w. 168 cm, d. 40 cm
£300 - £500

2

A mid 18th century oak dresser base with associated plate rack, the shelving over three drawers and two field paneled cupboard doors, h. 181 cm, w. 133 cm, d. 51 cm
£300 - £500

3

An 18th century and later oak drop leaf table, the leaves supported on single gate action with bobbin turned legs, h. 76 cm, w. 125 cm, d. 104 cm
£70 - £100



Lot 4

4

An early 20th century reproduction oak lowboy, the top over two drawers and shaped apron flanked by two drawers on cabriole legs with pad feet, h. 77 cm, w. 105 cm, d. 47 cm
£150 - £250

Lot 2



Lot 5

5

An early 18th century oak coffer, the top lifting to reveal a vacant interior over a three panel front with geometrical moulding on style feet, h. 72 cm, w. 113 cm, d. 47 cm *£100 - £150*

8

A late 18th century oak coffer, the four panel top lifting to reveal a vacant interior over a four panel front, h. 75 cm, w. 145 cm, d. 63 cm *£100 - £150*



Lot 9

9

A late 17th/early 18th century oak mule chest, the lift up top revealing a vacant interior over a single drawer and shaped apron on bun feet, h. 67 cm, w. 85 cm, d. 50 cm *£300 - £500*



Lot 6

6

A 19th century oak X-framed throne chair, the back with carved dragons over a red leather pad seat, h. 107 cm, w. 71 cm, d. 66 cm *£100 - £200*

7

A 19th century oak boardroom table, the later baize top over two single drawers to one end on turned legs, h. 77 cm, w. 183 cm, l. 364 cm *£250 - £350*



Lot 10

10

A late 18th century oak and mahogany banded chest of two short over three long drawers on bracket feet, h. 103 cm, w. 104 cm, d. 52 cm *£150 - £250*



Lot 11

11

An 18th century and later oak coffer, the three panel top lifting to reveal a vacant interior over a later carved three panel front, h. 73 cm, w. 131 cm, d. 61 cm *£150 - £250*

12

An early 18th century oak dresser base, the cut down plate rack over the one piece top and three drawers on turned front legs, h. 122 cm, l. 193 cm, d. 51 cm *£250 - £350*

13

An early 20th century 17th century style oak Wainscot chair, the cresting rail with carved armorial lions above a plaque depicting Charles I at Hurst castle and the carved front seat rail with the motto 'Rest Ye And Thankful Be', h. 133 cm, w. 62 cm. d. 58 cm *£100 - £150*



Lot 13

14

An 18th century and later oak drop leaf table, the oval top over two end drawers on bobbin turned supports and moulded stretchers, h. 72 cm, w. 158 cm, d. 128 cm *£40 - £60*



Lot 12



Lot 16

15

An 18th century oak coffer, the removable top revealing a vacant interior over a three fielded panel front, h. 71 cm, w. 125 cm, d. 56 cm

£100 - £150

16

A pair of 19th century oak hall chairs the back carved with green man masks on bobbin turned legs, h. 95 cm, w. 41 cm, d. 51 cm

£70 - £100

17

An early 20th oak two section Globe Wernicke book case with later cupboard base and cornice, h. 132 cm, w. 87 cm, d. 30 cm

£80 - £120



Lot 20

18

Leonard Wyburd for Libery & Co., an oak reading table, the sloping top above two under tiers with lattice sides on turned supports, h. 83 cm, w. 59 cm, d. 33 cm

£150 - £250

19

A 19th century and later French rosewood and beech three seat settee upholstered in a red floral fabric, the later cresting and top rails over serpentine seat and scrolling carved arms on carved cabriole legs, h. 70 cm, l. 188 cm, d. 73 cm

£150 - £250

20

A 19th century French ebonised and Boule vitrine with ormolu mounts, the top over single glazed door revealing a red velvet lined interior on plinth base, h. 114 cm, w. 82 cm, d. 41 cm

£200 - £300

Lot 15





Lot 21

21

A 19th century French ebonised and gilt brass mounted Boulle credenza, the top over side ogee glazed doors flanking central cupboard door on plinth base, h. 107 cm, w. 169 cm, d. 45 cm
£2000 - £3000

22

A 19th century mahogany bow front chest of two short over three long drawers with turned knobs and mother of pearl escutcheon's, h. 93 cm, w. 105 cm, d. 51 cm
£70 - £100

23

An Edwardian walnut adjustable music stool upholstered in a cut white gold fabric on turned, carved and fluted legs, h. 44 cm, dia. 33 cm
£40 - £60

24

An early 19th century mahogany bergere chair upholstered in a white gold button back fabric on turned and reeded front legs with brass castors, h. 97 cm, w. 66 cm, d. 83 cm
£300 - £500



Lot 24

25

A 19th century flame mahogany and crossbanded bow front chest of two short over three long drawers on turned feet, h. 107 cm, w. 108 cm, d. 54 cm *£150 - £250*

26

A 19th century mahogany Sutherland table, the drop leaves supported on turned legs with ceramic castors, h. 72 cm, max l. 102 cm, w. 92 cm *£30 - £50*

27

A 19th century mahogany chest of two short over two long drawers on turned feet, h. 87 cm, w. 94 cm, d. 48 cm *£50 - £80*



Lot 28

28

A Victorian walnut four tier corner what-not, with pierced gallery over serpentine shelves and carved S-scroll supports, h. 135 cm, w. 84 cm *£70 - £100*

29

A pair of Victorian mahogany chairs having a pierced and carved splat over serpentine seat upholstered in a red floral silk fabric on carved cabriole legs, h. 88 cm, w. 54 cm, d. 60 cm *£50 - £80*



Lot 30

30

A reproduction yew veneered and marquetry bureau bookcase, the dome top above a single beveled mirror door over the fall front with fitted interior and four graduated drawers on bracket feet, h. 184 cm, w. 58 cm, d. 45 cm *£200 - £300*



Lot 31

31

A George III mahogany and marquetry bureau, the fall front revealing a satinwood veneered fitted interior over two short and three long drawers flanked by fluted quarter columns on ogee bracket feet, h. 111 cm, w. 124 cm, w. 55 cm *£200 - £300*

31A

A near pair of Victorian rosewood bedroom chairs, having carved and pierced top rails over barley twist supports on turned legs and stretchers, h. 92 cm, w. 38 cm, d. 46 cm *£80 - £120*

32

A 19th century mahogany cheval mirror, the domed topped plate held by scroll stands over platform base on C-scroll feet, h. 169 cm, w. 89 cm, d. 58 cm *£100 - £200*

33

A George II walnut corner chair, the arms over shaped splats and turned supports over a rush serpentine seat on turned and cabriole legs, h. 85 cm, w. 80 cm, d. 66 cm *£200 - £300*

34

A late 18th century mahogany and ebony strung pembroke table, the drop leaf top over single drawer on square section tapering legs, h. 72 cm, l. 84 cm, w. 51 cm *£50 - £80*

35

An early 19th century mahogany sideboard, the carved back over three cushion fronted drawers on tapering column fronted cupboard doors enclosing cellarette drawer and slides on plinth base, h. 120 cm, w. 183 cm, d. 61 cm *£80 - £120*

36

A George III mahogany, satinwood crossbanded and boxwood strung tea table with castellated front corners over a shaped frieze, on cabriole legs with pad feet, w. 76 cm *£150 - £200*



Lot 37

37

A Victorian burr oak davenport John Manuel and Son, the lift up writing slope revealing a birds eye maple veneered fitted interior over four side drawers and four dummy drawers, on bun feet, h. 78 cm, w. 54 cm, d. 53 cm *£80 - £120*

38

An early 20th century walnut four section Globe Wernicke bookcase with cornice and plinth sections, h. 156 cm, w. 87 cm, d. 32 cm *£150 - £200*

39

A late 18th century mahogany and ebony strung chest of two short over three long drawers,

h. 103 cm, w. 106 cm, d. 50 cm
£100 - £150



Lot 42

40

An early 20th century oak revolving bookcase of large proportions, h. 95 cm, w. 67 cm, d. 67 cm
£150 - £250



Lot 41

41

An early 19th century mahogany armchair upholstered in button back brown leather, h. 91 cm, w. 62 cm, d. 68 cm
£80 - £120

42

A 19th century pine simulated mahogany mule chest, the top lifting to reveal a vacant interior over two short drawers on bracket feet, h. 75 cm, w. 122 cm, d. 67 cm
£150 - £250



43

An early 20th century continental mahogany games table, the serpentine top opening to reveal a baize surface with copper counter wells over a single drawer and under tier on cabriole legs, h. 76 cm, w. 86 cm, d. 41 cm
£80 - £120

44

A 19th century flame mahogany chest of two short over three long drawers on bracket feet, h. 105 cm, w. 110 cm, d. 55 cm
£100 - £150

45

An early 20th century beech and bergere folding steamer chair, h. 88 cm, w. 55 cm, d. 96 cm

£70 - £100

46

A Victorian mahogany occasional table, the circular top with a carved band and edge on a turned and carved column and three carved legs, h. 56 cm, dia. 45 cm

£50 - £80

47

A reproduction carved wood and parcel gilt blackamoor figure holding a nine branch lamp, h. 195 cm

£200 - £300



Lot 47



Lot 48

48

An early 20th century oak five section Globe Wernicke bookcase with plinth and cornice sections, h. 181 cm, w. 87 cm, d. 38 cm

£200 - £300

Lot 45



49

An early 20th century tole simulated rosewood flour bin, h. 61 cm, dia. 44 cm *£80 - £120*



Lot 50

50

A 19th century French oak chest of three long drawers, h. 82 cm, w. 113 cm, d. 51 *£100 - £150*



Lot 51

51

A 19th century and later French gilt brass mounted bookcase, the top over two glazed and paneled doors on turned feet, h. 141 cm, w. 95 cm, d. 39 cm

£150 - £200

52

A pair of early 20th century French walnut open arm chairs upholstered in a gold floral fabric on cabriole legs, h. 91 cm, w. 64 cm, d. 66 cm *£120 - £180*

53

A 19th century Biedermeier mahogany and ebony settee upholstered in a olive cut fabric on turned feet, h. 83 cm, w. 170 cm, d. 64 cm *£100 - £150*

54

A mid-19th century South German burr walnut, maple, crossbanded and boxwood inlaid serpentine-fronted commode of 'arc-en-arbalette' form, three long graduated drawers over a shaped apron on scrolled feet, w. 107 cm *£300 - £400*

55

A Louis XV-style kingwood, satinwood and floral marquetry serpentine side cabinet, the moulded serpentine brown, grey and white mottled marble top over two quarter-veneered doors on a gilt-metal mounted shaped apron and cabriole feet with gilt sabors, stamped 256 verso, w. 122 cm *£300 - £400*



Lot 54



Lot 58

56

A reproduction oak dresser, the plate rack having open storage and two cupboards over two drawers on cabriole legs, h. 183 cm, w. 122 cm, d. 44 cm *£200 - £300*

57

An early 18th century oak drop leaf table with single end drawer on turned legs, h. 72 cm, w. 162 cm, d. 123 cm *£50 - £80*

58

An early 20th century oak and embossed copper linen press by Maple & Co., the exaggerated cornice over two doors enclosing four slides above two short and two long drawers on a plinth base, h. 207 cm, w. 140 cm, d. 58 cm *£300 - £500*

59

A late 18th century oak bureau, the fall front revealing a fitted interior over four graduated drawers, h. 101 cm, w. 106 cm, d. 50 cm *£70 - £100*

60

An early 18th century six plank coffer, the top opening to reveal a vacant interior with a candle box, h. 51 cm, w. 117 cm, d. 36 cm *£50 - £80*

61

A 19th century carved oak cupboard, the top over single drawer flanked by lion masks over the cupboard door with carved panel depicting a tavern scene, h. 98 cm, w. 91 cm, d. 51 cm *£100 - £150*

62

A Victorian mahogany bookcase, the galleried top over two glazed doors enclosing adjustable shelf, two drawers and two blind panel doors, h. 162 cm, w. 121 cm, d. 49 cm *£150 - £250*

63

An early 19th century mahogany bookcase, the cavetto cornice over two astragal glazed doors enclosing adjustable shelving above four graduated drawers on splay feet, h. 226 cm, w. 107 cm, d. 53 cm *£200 - £300*



Lot 60

64

A Victorian mahogany circular breakfast table, the moulded top on turned column and three carved splay legs, h. 70 cm, dia. 119 cm

£50 - £80

65

A 19th century black painted cast iron and brass child's crib having drop down sides, h. 113 cm, l. 128 cm, w. 70 cm

£70 - £100



Lot 66

66

An early 20th century chinoiserie framed beveled glass mirror with mother of pearl inlay, h. 93 cm, w. 56 cm

£80 - £120

67

A Victorian mahogany conversation seat upholstered in a pink floral button back fabric on cabriole legs, h. 78 cm, w. 90 cm, d. 70 cm

£50 - £80

68

A late Victorian burr walnut davenport having stationary compartment to top over a brown tooled leather insert to writing slope lifting to reveal a birds eye maple veneered interior above four side drawers enclosed by a cupboard door, h. 87 cm, w. 58 cm, d. 57 cm

£120 - £180



Lot 68

69

A Regency mahogany and ebony strung toilet mirror, the plate on reeded supports over two drawers on turned ball feet, h. 52 cm, w. 53 cm, d. 22 cm

£50 - £80

70

An early 20th century six fold chinoiserie screen depicting buildings in landscape, h. 183 cm, w. 240 cm

£200 - £300

71

A Victorian and later mahogany ottoman, the upholstered top over concave sides on squat bun feet, h. 48 cm, w. 87 cm, d. 52 cm

£40 - £60

72

A set of four Victorian mahogany balloon back chairs, The serpentine seat on turned front legs, h. 85 cm, w. 48 cm, d. 52 cm

£30 - £50

73

A George III and later mahogany bureau bookcase, the top with two astragal glazed doors over the fall front with fitted interior above four graduated drawers on bracket feet, h. 219, w. 102 cm, d. 54 cm

£150 - £250

74

A set of eight (6+2) reproduction mahogany 18th century style dining chairs, the carved top rail over a carved and pierced splat above a pad seat upholstered in a striped fabric on cabriole legs with ball and claw feet, h. 101 cm, w. 66 cm, d. 61 cm *£200 - £300*

75

An 18th century oak sideboard, the top over three drawers on cabriole legs with pad feet, h. 81 cm, l. 216 cm, 50 cm *£300 - £500*

76

An early Victorian mahogany arm chair upholstered in a red leatherette fabric, having carved arm supports over a serpentine seat on turned front legs, h. 97 cm, w. 62 cm, d. 86 cm *£100 - £125*



Lot 77

77

An early 19th century oak and brass bound silver box, the top lifting to reveal a vacant interior and two locks, with gilt brass carry handles to the sides, h. 40 cm, w. 58 cm, d. 50 cm *£80 - £120*

78

A 19th century Indian carved, pierced and engraved mother of pearl jewelry box, the top and sides with birds and flowers in a foliate surround with a blue velvet lined fitted interior, h. 16 cm, w. 25 cm, d. 15 cm *£150 - £250*

79

A 19th century burr walnut and mother of pearl and abalone inlaid writing slope, the domed top lifting to reveal a tooled blue velvet slope, two ink bottles, pen tray and secret drawers, h. 15 cm, w. 35 cm, d. 23 cm *£50 - £80*



Lot 78



Lot 80

80

A 19th century coromandel and brass inlaid vanity box by Merrick of London, the top lifting to reveal a fitted interior with cut glass bottles and boxes with copper tops over secret drawer, h. 15 cm, w. 29 cm, d. 22 cm *£80 - £120*



Lot 81

81

An Edwardian mahogany, marquetry and satinwood banded tantalus having three cut glass decanters with mirror behind and folding top games box to front, incorporating a fitted interior and a cribbage board, h. 30 cm, w. 35 cm, d. 27 cm *£100 - £150*



Lot 82

82

An 18th century oak and mahogany long case clock, the swan neck pediment over an enameled and hand painted face with Arabic numerals, second dial, pierced hands and an eight day movement, signed by 'Farrar, Pontifract', h. 221 cm, w. 57 cm, d. 28 cm

£250 - £350



83

An 18th century oak and marquetry long case clock, the dental cornice over an enameled face with Roman numerals, painted spandrels, pierced hands, date aperture and a thirty hour movement, indistinctly signed, h. 202 cm, w. 54 cm, d. 30 cm

£120 - £180



84

An 18th century oak longcase clock, the swan neck pediment over a brass and silvered face with Roman and Arabic numerals, second dial, date aperture, pierced spandrels and hands and an eight day movement, signed 'Thomas Gorsuch, Salop', h. 225 cm, w. 52 cm, d. 27 cm

£300 - £500

85

An early 20th century mahogany longcase clock with brass and silvered face having Roman and Arabic numerals, second dial, pierced spandrels and an eight day movement, signed 'W. Carpenter, London', h. 204 cm, w. 44 cm, d. 23 cm

£200 - £300

86

An 18th century oak longcase clock, the cornice over an enameled and hand painted face with Roman numerals, pierced hands and a thirty hour movement, indistinctly signed, h. 216 cm, w. 50 cm, d. 27 cm

£150 - £250



Lot 87

87

An early 19th century mahogany and crossbanded longcase clock, the swan neck pediment over an enameled and hand painted face with Roman numerals, moon phase dial, second and date dials, pierced hands and an eight day movement, h. 225 cm, w. 58 cm, d. 26 cm *£200 - £300*

88

An early 20th century walnut and specimen wood strung wall clock, the enameled face with Roman numerals signed 'King, Loughborough', h. 74 cm, w. 42 cm *£50 - £80*

89

A late 19th century rosewood and mother of pearl inlaid drop dial wall clock, the enameled face with Roman numerals and a fusee movement, h. 72 cm, w. 43 cm *£80 - £120*

90

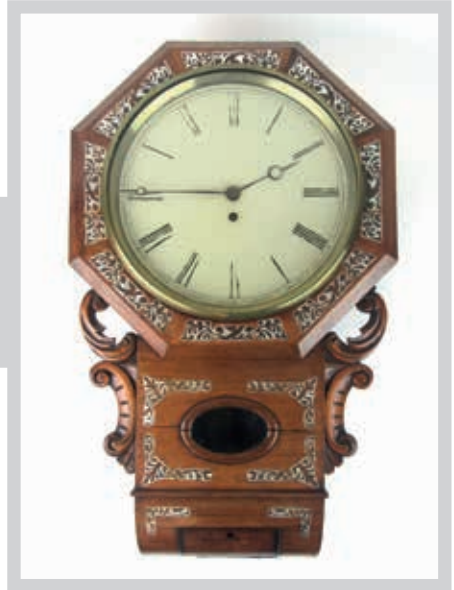
A 19th century French walnut mantle clock having display bowl to top, the face with Roman numerals and pierced hands behind beveled glass, h. 33 cm, w. 30 cm, d. 15 cm *£80 - £120*

91

A 19th century French gilt brass clock garniture richly embellished with cherub and flame finial's, lion and face masks and floral swags, the enameled face with Roman and Arabic numerals, hand painted floral swags and engraved and pierced hands, h. 43 cm *£700 - £900*

92

A pair of Persian rugs, the red grounds decorated with two spirals surrounded and affixed with palmettes including shah abbas, within matching foliate borders, 196 cm x 124 cm *£100 - £150*



Lot 91



93

A handmade Persian prayer rug, the triple line border enclosing the central field with eight mihrabs, 243 cm x 88 cm *£50 - £80*



94

A handmade Caucasian rug, the triple lined border enclosing a red ground central field with central lozenge, 220 cm x 146 cm *£200 - £300*

95

A handmade Afghan rug, the multi lined border enclosing a red ground field with a geometric design, 207 cm x 120 cm *£80 - £120*

96

A Persian rug, the multi line border enclosing a cream ground field with floral motifs and a red central lozenge, 350 cm x 250 cm *£200 - £300*

97

A pair of 19th brass ceiling hanging three branch chandeliers with etched glass shades, converted to electric, h, 92 cm *£80 - £120*



98

A composite stone statue of the Discobolus of Myron (discus thrower), a Greek sculpture figuring a youthful ancient Greek athlete throwing a discus, h. 168 cm, w. 98 cm *£500 - £800*

99 - 146

Spare Lots

PICTURES
AND PRINTS



PICTURES AND PRINTS



Lot 147

147

Peter Cossett (British b.1927)
farmhouse in a snowy field

signed
oil on canvas
39 x 49 cm

*Artist resale rights may apply to this lot

£200 - £300

148

Peter Coslett (British b. 1927)
man and dog walking on a snowy lane signed

oil on canvas
39 x 49 cm

*Artist resale rights may apply to this lot

£200 - £300

149

Peter Cosslett (British b. 1927)
sheep in a snowy field with a forge and church
in the background

signed
oil on canvas
29 x 39 cm

*Artist resale rights may apply to this lot

£200 - £300

150

20th century English school
horse and rider by a lake

unsigned
watercolour

29 x 40 cm

£40 - £60



Lot 148



Lot 149



Lot 151

151

Circle of George Lance,
still life with fruit and goblet,
bears monogram,
oil on canvas,
38.5 x 32 cm

£200 - £300

152

Attributed to Raoul Millais (1901-1999),
The Matador,
bears initials,
pen and ink,
25 x 13.5 cm

£80 - £120

153

Walker J:
Spain and Portugal, 1838, copper engraved
map, h/c in outline, originally published by SDUK
and then by Charles Knight in A History of
England

£40 - £60

154

John Minton Junior,
Birds nest and dragonfly,
signed and dated 1829,
watercolour, 15 x 19.5 cm,
together with another work by the same hand (2)

£60 - £100



Lot 155

155

Walter Dendy Sadler R.B.A. (1854-1923),
'The Butler',
signed,
oil on canvas,
75 x 49 cm

*Purchased from Sotheby's 16th June 1997, Lot
365

£2500 - £3000

156

Walter Dendy Sadler R.B.A. (1854-1923),
'The Landlord',
signed,
oil on canvas,
75 x 49 cm

*Purchased from Sotheby's 16th June 1997,
Lot 364

£2500 - £3000

157

After Antonio Canaletto,
'The Grand Walk in Wauxhall [sic] Gardens',
spuriously signed and dated 'JFK 1770',
large enamel plaque

*Purchased from Sotheby's 16th April 1996,

Lot 323

£1000 - £2000



Lot 156



Lot 157

158

Henry Frederick Lucas-Lucas (1848-1943),
a study of three horses and owner,
signed,
oil on canvas,
35 x 49 cm

£150 - £200

159

William Howard Yorke (1847-1921),
a study of a three master- possible 'Edderside',
signed and dated 1894,
oil on canvas,
49 x 73 cm

£1500 - £2000



Lot 159



Lot 160

160

Follower of David Roberts R.A.
(Scottish, 1796-1864),
'St Pedro de Castello, Venice',
signed and dated 1847,
oil on canvas,
49 x 74 cm

£300 - £500

161

Anthony Copley-Fielding (1787-1855),
shipping in a stormy sea,
signed,
watercolour,
13 x 19 cm

£50 - £80

162

J.F. Alderson
(French, early 20th Century School),
a study of horses and wagon,
signed,
oil on canvas,
19 x 27 cm

£50 - £80

163

After Walter Dendy Sadler R.B.A. (1854-1923),
'Darby and Joan' and 'The end of the skein',
Coloured engravings,
73 cm x 59 cm

£80 - £120

164

19th Century School,
a shepherd and friend,
indistinctly signed,
oil laid onto board,
14 x 19 cm, together with another by the same
hand (2)

£60 - £80

165

After John Luffman,
a map of Huntingdonshire with text, coloured
engraving, 15 x 8 cm

£30 - £40

166

Late 19th/early 20th Century School,
shipping off the coast,
unsigned,
oil on canvas,
29 x 44 cm

£20 - £30

167

20th Century School,
a woman feeding the chicks,
unsigned,
watercolour,
30 x 38 cm

£50 - £80

168

C. Gibbs (Late 19th Century),
possibly Charles Gibbs,
a group with a horse on a mountain slope,
monogrammed,
oil on canvas,
50 x 73 cm £100 - £200

169

After John Speede (1551-1629), map:
'The Counti of Warwick, The Shire Towne and
Citie of Coventre described', bearing the arms of
the Earls of Warwick, coloured engraving,
40 x 53 cm £100 - £150

170

After Christopher Saxton, map:
'Warwici=85, coloured engraving, 30 x 38 cm,
together with three other maps of Warwickshire
including Richard Blome, Pieter van den Keere
(4) £50 - £80

171

Late 19th/early 20th Century Chinese School,
a scroll seller,
watercolour on rice paper,
17 x 13 cm, together with five others in the
same series (6) £60 - £100



Lot 172

172

R. Delbeke (20th Century),
a still life,
signed,
oil on canvas,
48 x 60 cm £100 - £150

173

19th Century Italian School,
'The Pilgrimage',
unsigned,
oil on canvas,
48 x 73 cm £200 - £300



Lot 173

174

Gerard Bossuet (Flemish 18th/19th Century School),
a tavern exterior,
signed,
oil on panel,
39 x 49 cm

£100 - £200

175

19th Century School,
Howth, Ireland,
unsigned, dated verso 1887,
watercolour,
21 x 32 cm

£40 - £60

176

Joseph Hughes Clayton (1891-1929),
a Welsh coastal scene,
signed,
watercolour,
20 x 43 cm

£80 - £120

177

19th Century School,
a Flemish cathedral scene,
indistinctly signed and dated 1887,
watercolour,
41 x 27 cm

£60 - £100

178

19th Century School,
a Flemish cathedral interior,
unsigned,
watercolour,
41 x 27 cm

£60 - £100

179

20th Century School,
Coniston Waters, Lake District,
unsigned,
watercolour,
37 x 27 cm

£50 - £80

180

F. Meyer (early 20th Century),
a Flemish cathedral,
signed and dated 1910,
watercolour,
47 x 31 cm

£30 - £40



Lot 181 (part)

181

After Banksy (b. 1975),
a group of ten screenprints in colour including:
Can't beat the feelin', Dog Walker, Peace
Soldiers, Queen Victoria, Punks not dead,
Balloon Girl, Bomb Hugger, Consumer Jesus,
Police Kids (Jack & Jill), Police Angel (af), each
bearing 'The West Country Prince' stamp verso,
unframed *Please Note: VAT will be added to the
hammer price of this lot

£500 - £800

182

Of Banksy Interest:
a Dismaland Bemusement Park visitor's
brochure, 33 x 29 cm

£50 - £80

183

Of Banksy Interest:
three 2015 'Mercury' newspapers, each
featuring Banksy's historical Dismaland
Bemusement Park Exhibition, with unused free
tickets to the inside and one copy including a
sixteen page colour supplement

£40 - £60

184

After Banksy (b. 1974),
di-faced tenner, offset lithograph printed in
colours, 2004, the full sheet printed to the
edges, 7.6 x 14.3 cm, together with a letter of
provenance *£400 - £600*

185

After Banksy (b. 1974),
'Rude Snowman' Christmas card, lithographic
print on card, 14 x 17 cm *£30 - £40*



186

Banksy (b. 1974),
Box Set Multiple, 2017, The Walled Off Hotel,
22 x 22 cm, in the original artist designed Ikea
frame, with the sales receipt, Walled Off Hotel
welcome letter and list of rules
*Please Note: Artist Resale Rights may apply to
this lot *£800 - £1200*

191

Banksy (b.1974),
a souvenir wall section featuring a hooded
figure, six panels of miniature separation wall
decorated with 'Palestine' and other text, on a
matching base, overall h. 12 cm, with the sales
receipt and Walled Off Hotel postcard *Please
Note: Artist Resale Rights may apply to this lot
£1000 - £1200

187

Of Banksy Interest:
a Dismaland Bemusement Park leaflet including
a map *£30 - £50*

188

After Banksy (b. 1975),
a set of eight postcards *£40 - £60*

189

Of Banksy Interest:
an 'I am an imbecile' balloon, 90 x 60 cm
*Given as a gift by Dismaland stewards if they
thought the child was suitable *£30 - £50*

190

After Banksy (b. 1975),
'Flower Bomber', polypropylene sculpture,
2016 published by Medicom Toy/Sync,
Tokyo, with the original box *£1000 - £1200*





192

After Banksy (b. 1974),
advertisement for the release of Blur's Think
Tank Album, 2003
bus stop billboard poster,
150 x 100 cm

£600 - £1000

193 - 194

Spare Lots

195

Martin Fuller (b. 1943),
two abstract nude figures,
signed and dated '99,
mixed media,
78 x 56 cm

£200 - £300

196

Martin Fuller (b. 1943),
two abstract nude figures,
signed and dated '98,
mixed media,
58 x 77 cm

£200 - £300



Lot 195

197

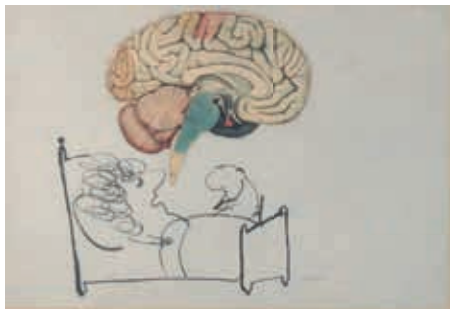
Martin Fuller (b. 1943),
'The Way',
signed and dated 1979,
pencils,

56 x 76 cm, together with an artist's proof by
the same artist (2)

£100 - £200



Lot 196



Lot 198

198

Melville 'Mel' Calman (1931-1994),
a cartoon depicting a woman sleeping in a bed, a
speech bubbled formed of a brain,
signed in pencil,
print and mixed media,
36 x 51 cm

£200 - £300

199

20th Century Chinese School,
a crouched lion,
needlework,
42 x 42 cm, together with another of a roaring
tiger (2)

£60 - £100

200

David Chapple (American, 20th century),
'Flint Vehicle City',
cars on a high street,
signed and numbered 621/1000,
limited edition lithographic print,
39 x 49 cm

£100 - £150

201

20th Century Scottish School,
a lake and mountains,
indistinctly signed,
oil on canvas,
40 x 60 cm, together with another by the same
hand (2)

£80 - £120

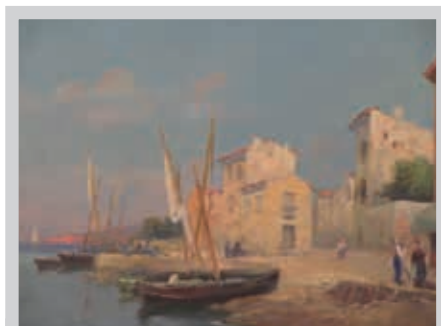
202

Maurice Flachet (1872-1964),
La-Grand Place, Brussels,
signed,
oil on canvas,
79 x 59 cm

£400 - £600



Lot 202



203

20th Century Continental School,
boats on a beach,
indistinctly signed,
oil on canvas,
33 x 42 cm

£100 - £150

204

19th Century Sailor, 'H.M.S. Algiers',
woolwork,
45 x 56 cm

£150 - £250



LOCKE & ENGLAND
AUCTIONEERS & VALUERS

LEAMINGTON SPA AUCTION CENTRE

Wednesday 24th October 2018
Valuation Day

Commencing 12 noon - 4pm



Our specialist team of valuers are happy to advise on all antique/collectable and jewellery items, for which no appointment is necessary.

Clients are invited to bring along items for complimentary auction advice without obligation. For larger items, we are happy to visit your home. – just call to make an appointment.

Entries currently invited for our specialist sales of Antiques, Jewellery, Books & Ephemera, Mid Century Design, Militaria, Wines & Spirits, Collectable Toys.

AUCTION ENTRIES INVITED

Leamington Spa Auction Centre 12 Guy Street, Leamington Spa, CV32 4RT
01926 889 100 or valuers@leauction.co.uk

www.leauction.co.uk

CERAMICS, GLASS
& WORKS OF ART



CERAMICS, GLASS AND WORKS OF ART

205

A large mounted continental ceramic charger painted with scenes of an 18th century lady and gentleman. Signed J.Vials. d. 74 cm. £40 - £60

206

A large Doulton Burslem jardiniere with blue and white floral decoration. h. 34 cm £30 - £50



Lot 207

207

Hannah Barlow for Doulton Lambeth, a large stoneware baluster vase, decorated with scenes of cattle and goats. Dated 1880. h. 54.5 cm
£500 - £800



Lot 208

208

Hannah Barlow for Doulton Lambeth, a stoneware tyg having a silver rim and three panels depicting sheep. Dated 1876. h. 15.5cm
£250 - £350

209

A pair of late 19th century Doulton Lambeth stoneware vases having barley decoration and silver rims. h. 24 cm. £40 - £60



Lot 210

210

A substantial late 19th century Meissen style lidded bowl, having ornate brass base, rim and finial. The body decorated with hand painted decoration of countryside scenes. Crossed swords mark under lid. h. 57 cm *£200 - £300*



211

A Staffordshire creamware wash jug and bowl decorated with ornate applied shell and foliate decoration. Signed 'P.Weldon' to bases. h. 40 cm. *£80 - £120*

212

A Staffordshire creamware jug decorated with applied foliate and shell decoration together with a similar planter. Planter signed 'P.Weldon' to base. h. 28 cm. *£40 - £60*

213

Three large 19th century presentation loving cups decorated in red and green with gilt decoration. One cup relating to the 'Worcester Coursing Club 1872' *£80 - £120*

214

A pair of Royal Crown Derby twin handled vases with floral and gilt decoration A/F. h. 20 cm *£20 - £30*

215

A Royal Crown Derby Imari paperweight in the form of a tortoise together with one in the form of a snail. *£40 - £60*

216

A Shelley dripware vase of flared form. h. 20.5 cm *£20 - £30*

217

A Royal Doulton figure 'The Cobbler' in green and blue robes. HN 542. h. 21 cm *£200 - £300*



Lot 217

218

A Royal Doulton character jug John Lennon, D 6725. h. 14 cm *£40 - £60*

219

A large Royal Doulton 'Sam Weller' musical character jug. h. 16 cm *£40 - £60*



Lot 220

220

Two Royal Doulton red glazed Welsh dragons. Limited editions No. 180 & 906/1500. h. 13 cm *£50 - £80*

221

A Chinese blue-glazed ceramic figure of an elderly woman. h. 15 cm £20 - £30



Lot 222

222

A Royal Worcester blush ivory jug having a handle modelled as bamboo, basket weave design and lizard relief to body. h. 16 cm £30 - £50

223

A Royal Worcester miniature vase having painted rose decoration together with a similar Royal Worcester pot and blush ivory vase A/F £20 - £40

224

A Royal Worcester blush ivory vase modelled as a conch shell. Dated 1912. h. 20.5 cm £40 - £60

225

A Royal Worcester blush ivory vase modelled as a basket together with one modelled as a bag and one other. h. 10 cm £40 - £60

226

A Royal Worcester blush ivory miniature figure of a tortoise together with model of a leaf. £20 - £30



Lot 227

227

A large Minton Secessionist no.8 bowl decorated with stylised blue tubeline decoration. d. 42.5 cm £50 - £80



228

A large ceramic model of 'The Dulux Dog' with paw resting on paint tin. h. 33 cm. £100 - £200

229

A late 18th/early 19th century Majolica dry drug jar having blue and yellow floral decoration and central religious symbol. A/F. h. 24 cm. £100 - £150



Lot 229

230

A Chinese vase with lion mask handles and painted decoration depicting flowers, censers etc. On a hardwood stand. h. 50 cm £100 - £200

231

A Chinese blue and white ginger jar decorated with floral scenes and a bird of paradise. Kangxi six character mark to base. A/F h. 27 cm

£80 - £120

232

A pair early 20th century Chinese bottle vases decorated in a celadon glaze with flowers, wildlife and character marks. h. 35 cm

£80 - £120

233

A Chinese blue and white brush pot with painted panels depicting a man and child, bordered by flowers and natural scenes. Four character mark to base. h. 15.5 cm

£80 - £120

234

A 19th century Japanese double gourd vase decorated in the Imari palette. A/F h. 19.5cm

£20 - £30

235

A Meiji period Japanese Satsuma vase decorated with 'Thousand faces' decoration and dragon relief to top. Together with a similarly decorated teapot having dragon spout and handle. Character marks to bases. A/F h. 25 cm

£300 - £400

236

Four London Scottish regiment officers china mess bowls. d. 24 cm

£20 - £40

237

Four London Scottish regiment headquarters china mess bowls. d. 25 cm

£20 - £40

238

A Prussian officers china mess bowl together with a similar plate. d. 22 cm

£20 - £30

239

A 19th century cup and saucer with a transfer printed design after Thomas Bewick (engraver and author), together with one other 19th century cup.

£20 - £40

240 - 247

Spare Lots

**248**

Sally Tuffin for Moorcroft, a large 'Temptations' pattern footed bowl decorated on a cream ground. Limited edition no.

239/500. d. 26.5 cm

£100 - £200

249

A Moorcroft 'Rose' pattern covered bowl decorated on a deep blue ground. Limited edition no. 41/500. d. 13 cm

£60 - £100

250

Sally Tuffin for Moorcroft, a 'Rose Bud' pattern vase decorated on a woodsmoke ground. Limited edition no. 33/500. h. 28 cm

£180 - £220



Lot 235





Lot 251

251

Sally Tuffin for Moorcroft, a 1987 'Grapevine' pattern vase, designed exclusively for the Moorcroft Collector's Club, limited edition of 232, h. 19 cm
£80 - £120

252

Sally Tuffin for Moorcroft, a 1998 'Daisy' pattern vase, designed exclusively for the Moorcroft Collector's Club, limited edition of 193, h. 21 cm
£50 - £80

253

Sally Tuffin for Moorcroft, a 1999 'Rose' pattern jug, designed exclusively for the Moorcroft Collector's Club, h. 14 cm
£60 - £80

254

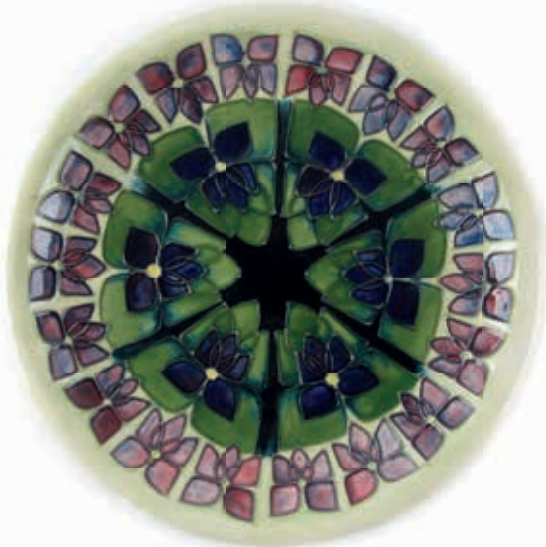
Sally Tuffin for Moorcroft, a 1999 'Sweet Pea' pattern vase, designed exclusively for the Moorcroft Collector's Club, h. 28 cm
£100 - £150

255

Rachel Bishop for Moorcroft, a 1994 'Snow Drop' pattern loving cup, designed exclusively for the Moorcroft Collector's Club, h. 15 cm
£60 - £80

256

Sally Tuffin for Moorcroft, a 'Penguin' pattern plate, 60/150, d. 26 cm
£80 - £120



Lot 257

257

A Moorcroft 'Violet' pattern plate, d. 26 cm
£40 - £60

258

A Moorcroft 'Hibiscus' pattern plate in the olive/coral colours, d. 26 cm
£40 - £60

259

A Moorcroft vase decorated in the 'Hibiscus' pattern in the olive/coral colours, h. 18 cm
£50 - £80



Lot 260



Lot 259

260

Sally Tuffin for Moorcroft, a 'Banksia' pattern vase of squat form, h. 11 cm *£80 - £120*

261

A small Moorcroft vase decorated in the 'Columbine' pattern on a green ground, h. 10 cm *£30 - £50*



Lot 261



Lot 264



Lot 262

262

A squat Moorcroft vase decorated with the 'Anemone' pattern on a woodsmoke ground, h. 12 cm *£50 - £80*

264

A Moorcroft vase decorated in the 'Fruit and Vine' pattern on a dark blue ground, Australian Export only, h. 20 cm *Purchased at the Moorcroft Collector's Club Opening Day *£150 - £200*

265

A Moorcroft vase of tapering form decorated in the 'Finches' pattern on a dark green/blue ground, h. 17 cm *£50 - £80*



Lot 263

266

Rachel Bishop for Moorcroft, a tall jug decorated in the 'Amber Wood Foxglove' pattern on a cream ground, signature to base, h. 24 cm *£100 - £200*



Lot 266

267

A Moorcroft planter decorated in the 'Columbine' pattern on a woodsmoke ground, h. 13 cm *£80 - £120*

263

A small Moorcroft vase decorated with tulips on a cream ground, h. 14 cm *£30 - £40*

268

Sally Tuffin for Moorcroft, a small vase decorated in the 'Plum' pattern with nesting bird, on a cream ground, h. 100 cm *£40 - £60*

269

A small Moorcroft open vase decorated in the 'Hibiscus' pattern in pink and yellow on a white ground, h. 7 cm
£30 - £40



270

Sally Tuffin for Moorcroft, a 1990 'Koi Carp' twin-handled vase, h. 34 cm
£300 - £400

271

A William Moorcroft plate, c. 1916, decorated in the 'Pomegranate' pattern, d. 23 cm
£80 - £120



Lot 271

272

Two Moorcroft wall plaques of rectangular form decorated in the 'Clematis' and 'Anemone' patterns on blue grounds, 11.5 x 8 cm each
*Purchased at the Moorcroft Collector's Club open day
£50 - £80

273

A Moorcroft circular wall plate decorated with three flowers on a woodsmoke ground, d. 15 cm
£30 - £50

274

A Moorcroft jar and cover decorated in the 'Anemone' pattern on a woodsmoke ground, h. 9 cm
£40 - £60

275

A Richards Butler Moorcroft commemorative mug, Beaufort House, 1989, h. 9 cm, together with a 1989 mug celebrating the opening of the Moorcroft Museum
£40 - £60

276

Three Moorcroft mugs decorated in the 'Plum (Silverline)', 'Rosehip' and 'Bramble' patterns on white grounds, h. 9 cm each
£60 - £80

277

A Moorcroft 'Hibiscus' pattern oval dish decorated on a blue ground. l. 23 cm
£30 - £50

278

A Moorcroft 'Wattle' pattern oval dish decorated on a cream ground. WM mark to back. l. 23 cm
£30 - £50



Lot 279

279

A Moorcroft 'Clematis' pattern ashtray decorated on a blue ground. d. 15 cm
£40 - £60

280

A Moorcroft 'Hibiscus' pattern triangular ashtray decorated in yellow and red colours on a blue ground. Queen Mary paper label to back. d. 13.5 cm
£20 - £30



Lot 280

281

A Moorcroft 'Orchid' pattern ashtray of oval form, decorated on a blue ground. l. 15.5 cm
 £20 - £30

282

A Moorcroft 'Bermuda Lily' ashtray of tear drop form, decorated on a green ground. l. 15 cm
 £20 - £40

283

A Moorcroft 'Freesia' pattern ashtray of octagonal form, decorated on a dark blue ground. d. 11 cm.
 £30 - £50



Lot 284

284

A Moorcroft 'Violet' pattern pin dish decorated on a blue ground. d. 11.5 cm
 £20 - £30

285

A Moorcroft 'Anemone' pattern pin dish decorated on a blue ground. d. 12 cm
 £20 - £30

286

Sally Tuffin for Moorcroft, a 'Bluebird and Lemons' pattern pin dish decorated on a cream ground. d. 12 cm
 £30 - £50



Lot 300

287

Two Moorcroft 'Colombine' pattern bowls decorated on green grounds. d. 12 cm
 £60 - £80

288

A Moorcroft 'Pansy' pattern footed bowl, decorated on a woodsmoke ground. d. 9 cm
 £30 - £50

289

A Moorcroft 'Pansy' pattern footed bowl decorated on a deep blue ground together with a small Moorcroft 'Coral Hibiscus' pattern dish.
 £30 - £50

290

A collection of Moorcroft Christmas cards (1993-2008)
 £20 - £30

291

A collection of Moorcroft gift catalogues (1988-2011), 1994 onwards including price lists.
 £40 - £60

292

A selection of Moorcroft collectors club newsletters (numbers 1- 65, excluding numbers 6 and 37)
 £30 - £50

293 - 299

Spare Lots

300

A large painted spelter figure of a prowling panther. l. 60 cm
 £200 - £300

301

Dennis Jones (USA)- A painted bronze figure of a bald eagle catching a fish, entitled 'Pride and Passion', limited edition of 2500 issued by the Franklin mint with authorisation from the Alaska Chilkat Bald Eagle Preserve. Complete with stand and paperwork. h. 52 cm. £100 - £150



Lot 302



Lot 303

302

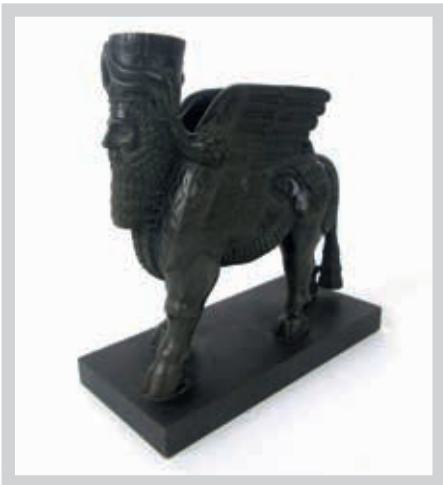
A large 18th/19th century Tibetan bronze Stupa reliquary. The tapering form rising from an octagonal base and displaying imagery representing the five purified elements. Possible monastic workshop marks to base. h. 49 cm

£200 - £300

303

A 19th century table snuff mull, the large cows horn supported and pivoting on a mythical creature base. Inscribed on the mount; 'Presented to R.G Fendick By Major & Mrs Uniacke Nov 1884'. h. 52 cm

£200 - £300



304

A 19th century patinated bronze figure of a Lamassu, a mythical creature from Assyrian mythology. h. 20 cm

£200 - £300

305

An eastern bronze figure of a fisherman casting his net. Mounted on a wooden base. h. 22 cm
£100 - £150

306

Paul Moreau-Vauthier (1871-1936), a desktop bronze of lady in the sea. Signed and dated 1901 to back right corner. l. 18 cm £100 - £200



Lot 307

307

A cold painted spelter table lighter cast as a pheasant beside a tree stump. h. 19.5 cm
£100 - £150

308

A pair of late 19th/early 20th century Japanese bronze censers having enamel decoration and zoomorphic feet £100 - £200

309

A pair of 19th century pewter samovars having engraved foliate decoration and brass taps. h. 57 cm. £80 - £120

310

A 19th century Chinese bronze censer having cloisonne enamel decoration. h. 23.5 cm
80 - £120

311

A Chinese bronze temple bell having incised decoration together with a similar eastern hanging bell £70 - £100

312

A selection of African wooden carvings to include four figures and two masks. Max h. 65 cm £60 - £100

313

A pair of African bronze figures (possibly from Benin) together with one smaller bronze figure and two eastern metalware cannons £60 - £100



Lot 305

314

A 19th century Chinese Dao sword, the curved single edge blade having three fullers and incised dragon decoration. Disc shaped cross guard and cord bound grip. Sheathed in a wire bound wooden scabbard. Blade length 77 cm. £100 - £150

315

A WWI German S84/98 bayonet marked 'F Koeller & Co Ohligs Solingen' with steel scabbard. Blade length 25 cm. £40 - £60

316

An US issue Remington 1913 pattern bayonet with leather scabbard A/F. Blade length 43 cm. £20 - £40

317

A Webley service air rifle MKII, serial number 371548. 0.22 cal, break barrel with breech locking an flip up rear sight. L.106 cm
£250 - £350

318

A WWII Japanese silk prayer or 'Good luck' flag, the top of the flag depicting the rising sun above Japanese script. l. 100 cm £70 - £100



Lot 314

319

An assortment of approximately 70 military greeting cards, some being regimental. Dating from 1900 onwards. *£20 - £40*

320

An assortment of WWII German POW letters *£20 - £30*

321

A selection of photographic film negatives related to WWI, to include aircraft, the trenches, artillery etc *£50 - £80*

322

A selection of photographs related to WWII to include photographs of prisoners of war, the French resistance, American soldiers etc *£50 - £80*

323

A selection of photographs related to D-day to include photos of landing craft and tanks, gliders, commandos etc *£50 - £80*

324

A 20th century brass and glazed naval porthole. d. 20 cm *£30 - £40*

325

A bronze and stone plaque or ashtray being a 'Souvenir of the African Victory 1942 1943'. l. 11 cm. *£40 - £60*

326

A framed WWI death plaque to 16025 private Raymond John Brooks, Coldstream Guards. *£40 - £60*

327

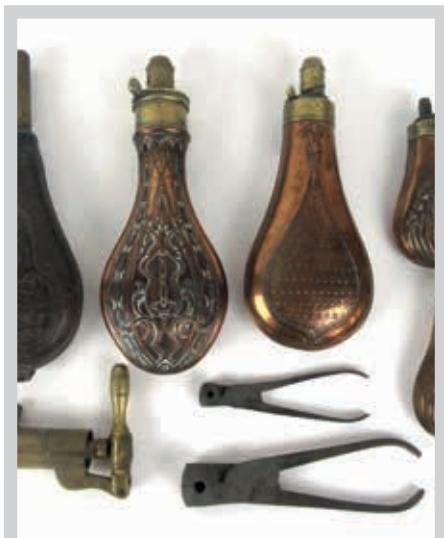
A WWI medal trio consisting of the 1914-15 star, British war medal, victory medal and ribbon bar with rosette. Issued to Private J.G Garret 13900, Hampshire regiment. *£50 - £80*

328

A WWII Hitler youth dagger marked RZM M 7/29-1941 to blade. Together with a Hitler youth arm band. *£100 - £150*

329

Two WWII German army presentation plates inscribed 'Ogfr. Fritz Schafer 14.7.1944' and 'Es lebe hoch das Regimnet! Gefn Weller III.Bat./g. komp.' *£40 - £60*

**330**

A selection of 19th century shooting accessories to include embossed powder flasks, leather shot flask, bullet molds, shot loader etc. *£60 - £100*

331

A 'Medaille de la reconnaissance francaise' or medal of French gratitude display to Richard Fuller. l. 83cm *£100 - £150*

332

Two 19th century wedding domes, one having red upholstery with gilt metalwork and glass dome the other with pink and green upholstery. h. 50 cm. *£50 - £80*



Lot 328



Lot 333

333

An early 20th century cast iron road sign 'Heather Road' l.124 cm £70 - £100

340

A selection of fountain pens to include 14ct gold nib Parker pens, Sheaffer, Creeks etc £50 - £80

334

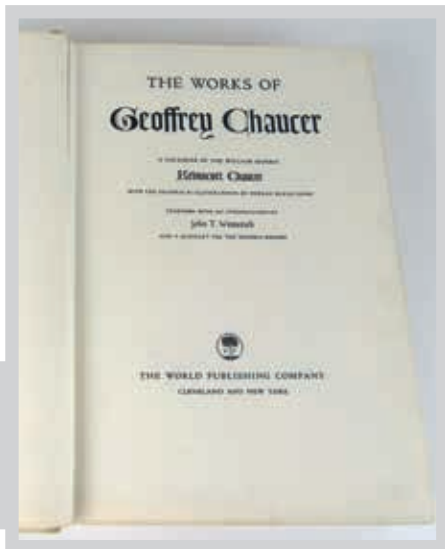
A selection of three walking canes, two having bamboo shafts with white metal and rolled gold tops, the other with an oak shaft and white metal collar. l. 88 cm £50 - £80

335

An early 20th century German violin bearing a 'Schmidt Standard' paper label. Complete with case and two bows. £200 - £300

336

A late 19th century taxidermy juvenile crocodile, modelled with mouth open. l. 84 cm £80 - £120



337

Kelmscott press- The works of Geoffrey Chaucer. A facsimile edition of the William Morris Kelmscott Chaucer with the original 87 illustrations by E. Burne-Jones. £300 - £500

338

A pair of early 20th century Chinese embroidered silk shoes. £40 - £60

341

A S.G Dupoint of Paris gold plated lighter £20 - £40



Lot 335

339

A Jadeite figure of seated Foo Dog together with a smaller jade carving of a Guardian Lion. h. 6 cm £50 - £80

Lot 336



342

Spare Lot

343

T.E Lawrence- Seven Pillars Of Wisdom, 1935 1st edition. Published by Jonathan Cape. £30 - £50

344

A collection of Stratford upon Avon related Mauchline ware items to include boxes, beakers, sand timer etc. £80 - £120

345

Three early 20th century copper and brass ships lanterns marked 'Port', 'Starboard' and 'Masthead' h. 26 cm £50 - £80



Lot 346

346

A WWII era British air crew Observer parachute and harness. Named to T.Perks, stamped with air ministry marks. £200 - £300

347

A Chinese carved jadeite figure of an elephant. h. 8 cm £40 - £60

348

A collection of Coventry city football memorabilia to include a Coventry City official souvenir signed ball, two large flags, one relating to the 1987 cup final and a scrap book of the 1987 cup final etc. £50 - £80

349

Great train robbery interest - A formica topped kitchen corner unit previously owned by Bruce Reynolds and sold at auction by British car auctions Ltd. in the Great train robbery special auction at Measham on 4/2/1969 lot No. 96, with certificate * £80 - £120

350 - 399

Spare Lot



Lot 345



LOCKE & ENGLAND

AUCTIONEERS & VALUERS

TO BE SOLD BY AUCTION

Thursday 29th November 2018
Jewellery & Watches

Commencing at 3.00pm



We hold three sales per year in Leamington Spa. These jewellery sales have become a highlight of the sales calendar and include a range of antique & modern watches, rings, sovereigns, bracelets, brooches, pendants and necklaces, etc.

**Viewing: Saturday 24th November – 10am - 2pm, Tuesday 27th November - 9am - 5pm
Wednesday 28th November – 9am - 7pm, Morning of sale from 9am**

AUCTION ENTRIES INVITED

Leamington Spa Auction Centre 12 Guy Street, Leamington Spa, CV32 4RT
01926 889 100 or valuers@leauction.co.uk

www.leauction.co.uk

W&H PEACOCK
AUCTIONEERS & VALUERS

Do you have bottles of wine and spirits to sell at auction?

We invite entries of vintage and classic wines and spirits as well as more everyday drinks and we are happy to give free sales value advice. Contact the auctioneer Chris Armstrong wine@peacockauction.co.uk. We can accept entries at any of our Auction Centres or valuation days.

Bedford Auction Centre
Eastcotts Park, Wallis Way, Bedford, Bedfordshire MK42 0PE
01234 266 366 or wine@peacockauction.co.uk

www.peacockauction.co.uk

SILVER & PLATE,
COLLECTABLE COINS
AND STAMPS



SILVER & PLATE, COLLECTABLE COINS & STAMPS

400

A pair of 19th century silver plated Corinthian column candlesticks on stepped bases.
h. 31 cm £50 - £80

401

A silver plated pedestal bowl by Hukin & Heath having a hammered finish and embossed naturalistic decoration. h. 11cm £30 - £50



Lot 405

405

A George V silver treacle tin by Asprey & Co. Hallmarked for Birmingham, 1921. Approx weight 297g £100 - £150

406

A George III long handled pan with armorial crest to front. Hallmarked for Birmingham 1787. H 13 cm. Approx weight 186g £180 - £250

407

A pair of George III silver salts having engraved foliate decoration bordering monogrammed and vacant cartouches together with a pair of similar silver salts. Assay marks for Newcastle. Approx weight 314g £200 - £300



Lot 402

402

A silver mounted lockable decanter having a cut glass body and stopper. Hallmarked for Birmingham, 1921. h. 24 cm. £50 - £80

403

A pair of silver Corinthian column candlesticks on stepped bases. Hallmarked for Sheffield 1901. h. 16.5 cm £80 - £120

404

A silver pint tankard, hallmarked for Sheffield 1967. Approx weight 302g £70 - £100



Lot 406

408

A silver Mappin & Webb cigarette box. Hallmarked for London, 1908. Approx weight 439g £50 - £80

409

A George V silver pedestal bowl having presentation inscription to front. Hallmarked for Chester 1926. Together with ebonised stand. Approx weight 398g £90 - £120



Lot 407

410

An Edwardian silver helmet shaped cream jug together with a silver christening tankard and a chamber stick of small proportions. Various hallmarks. Approx weight 303g £80 - £120



Lot 419

411

A George V silver toast rack together with a silver cigarette box, napkin ring and a pair of shell sugar tongs. Various hallmarks. Approx weight 295g £50 - £80

412

A pair of small silver alms dishes hallmarked for London, 1957. Approx weight 92g £20 - £30

413

An Art Nouveau pin dish together with a silver pierced bowl and a silver snuff box with embossed scrolling boarder. Various hallmarks. Approx weight 82g £20 - £40

414

A pair of George V silver salt and mustard pots. Hallmarked for Birmingham 1931. Approx weight 92g £20 - £30

415

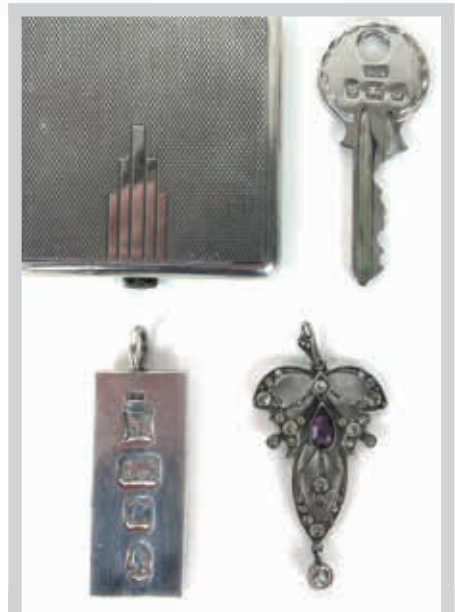
Two George V silver pill boxes of cylindrical form together with a silver pierced bowl. Hallmarked for Birmingham 1916 & 1917. Approx weight 60g £20 - £30

416

An assortment of silver spoons to include ten matching monogrammed teaspoons, salt spoons, presentation spoon etc. Various hallmarks. Approx weight 296g £70 - £100

417

A set of six George III silver gilt teaspoons together with a set of six smaller Georgian spoons and an assortment of other silver flatware. Various hallmarks. Approx weight 301g £80 - £120



418

An Art Deco silver compact together with a silver ingot pendant, silver presentation key and an 800 silver pendant. Various hallmarks. Approx weight 103g £30 - £50

419

A cased pair of George V silver serving spoons having pierced decoration to bowls and handles. Hallmarked for Sheffield, 1911. Approx weight 105g £40 - £60

420

A cased set of six silver scroll handled butter knives. *£15 - £25*

421

A cased set of six silver teaspoons, hallmarked for Birmingham 1950. Approx weight 72g *£15 - £25*

422

A silver 'College of Arms' plate commemorating the silver jubilee of Queen Elizabeth II. No. 1744/2500. Approx weight 575g *£100 - £150*

423

A George V two handled golf trophy engraved 'Ladbrook Park Golf Club Challenge Cup 1935 2nd Division'. Hallmarked for Birmingham, 1935 with Jubilee mark. Approx weight 511g h. 28cm *£120 - £180*

424

A silver 'College of Arms' plate commemorating the 25th anniversary of the coronation of Queen Elizabeth II. No.1062/2500. Approx weight 577g *£100 - £150*

425

A large George V silver photo frame with engine turned decoration and wooden back. h. 36 cm *£80 - £120*

426

Three George V silver photo frames. Various hallmarks. Max height 27.5cm *£50 - £80*



427

A silver 'College of Arms' plate commemorating the 25th anniversary of the coronation of Queen Elizabeth II. No.0776/2500. Approx weight 574g *£100 - £150*

428

An Edwardian silver three branch epergne, hallmarked for Birmingham, 1908. Approx weight 210g. h. 22cm *£60 - £80*

429

A silver cup and napkin ring with engraved initials together with a set of six silver teaspoons. Various hallmarks. Approx weight 115g *£25 - £40*

430

A Walker & Hall silver tray having repousse floral decoration surrounding vacant cartouche. Approx weight 118g. l. 24cm. *£30 - £40*

431

A George V silver cigarette case having engraved scrolling decoration together with an Edwardian silver vesta case. Hallmarked for Birmingham 1913 and 1908. Approx weight 118g *£40 - £60*



Lot 428



Lot 432

439

A selection of silver items to include a circular photo frame, spirit labels, napkin rings, christening set etc. Various hallmarks. Approx weight 264g *£70 - £100*

432

A white metal cigarette case having a Dutch cap badge to front and painted Africa Korps badge to back. Approx weight 154g *£40 - £60*

440

A silver dressing set together with a pair of silver candle holders. Various hallmarks. *£30 - £50*

433

A silver cigarette case having Royal Irish Rifles badge to front. Hallmarked for Birmingham, 1927. Approx weight 110g *£50 - £80*



Lot 433

441

A Victorian silver mug having gadrooned and banded decoration. Hallmarked for Sheffield, 1896. Approx weight 158g *£40 - £60*

442

A pair of George V silver candle sticks of tapering form. Hallmarked for Birmingham, 1911. h. 17 cm *£20 - £30*

434

An assortment of silver items to include a silver bud vase, napkin ring, pusher spoon, sifting spoon etc. Various hallmarks. Approx weight 238g *£50 - £80*

443

An assortment of Georgian and later silver flatware to include sugar tongs, tea spoons, mother of pearl handled knife, basting spoons, etc. Various hallmarks. Approx weight 456g *£100 - £150*

444

A George VI silver tray having scroll feet and piecrust boarder. Hallmarked for Birmingham, 1937. Approx weight 630g *£150 - £200*

435

A silver four-section folding 30cm ruler. Hallmarked for London 1972. Approx weight 55g *£40 - £60*

Lot 444

436

A white metal basting spoon and salt spoon together with four silver tea spoons. Approx weight 124g *£20 - £30*

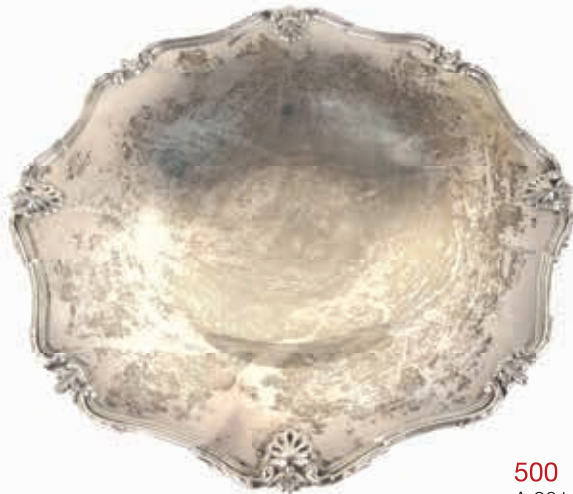


437

An Eastern white metal cigarette case having engraved floral decoration. Approx weight 175g *£40 - £60*

438

A pair of Eastern white metal boat shaped salts, having embossed scrolling decoration. Approx weight 148g *£40 - £60*



Lot 445

445

A silver footed bowl having scallop and foliate decoration to rim. Hallmarked for Birmingham, 1935 with Jubilee mark. Approx weight 258g
£80 - £120

446

A silver sugar caster hallmarked for Birmingham, 1967. Approx weight 129g
£40 - £60

447

A silver footed bowl of octagonal form together with a pair of white metal sugar tongs. Bowl hallmarked for Sheffield, 1960. Approx weight 183g
£60 - £80

448

A George III silver card tray, the beaded boarder enclosing engraved decoration and a central monogram. Hallmarked for London 1768. Approx weight 281g
£120 - £180

449

A pair of 'Peter Piper' silver pepper and salt mills. Hallmarked for Birmingham, 2000 with millennium mark. Approx weight 256g
£60 - £80

450

A large silver basting spoon, hallmarked for London, 1830. Approx weight 110g. l. 30.5 cm.
£40 - £60

451

A cased set of six Scandinavian silver and enamel coffee spoons.
£40 - £60

452

An assortment of silver tableware to include salt and pepper shakers, mustard pot, sugar caster, sugar tongs, mother of pearl handles forks etc. Various hallmarks. Approx weight 310g
£90 - £120

453

A selection of silver Georgian and later teaspoons. Various hallmarks. Approx weight 150g
£30 - £50

454 - 499

Spare Lot

500

A 2014 Datestamp twelve coin specimen year set
£60 - £80

501

A 2016 Datestamp twelve coin specimen year set
£60 - £80



502

A 2015 New Portrait Coinage Medal, limited edition 321/500.
£20 - £30

503

A 2014 UK Year of the Horse Silver Mule Coin set containing one error coin struck with the wrong obverse together with one standard coin.
£50 - £80

504

A Datestamp 2012 and 2013 '958 and '999' Silver Britannia coin set £20 - £30

505

A Jersey 2013 Heraldry of the Coronation Silver Coin Set containing a silver proof £5 coin surrounded by ten silver proof 50 pence pieces. £60 - £80

506

A 2013 H.R.H Prince George Silver Coin Set containing a selection of six commonwealth silver coins. No. 218/250 £40 - £60

507

A 2013 Coronation Jubilee Coin Set containing an original 1953 proof coin set together with a 2013 commemorative crown. £50 - £80

508

A Queen Elizabeth II crown set containing seven gold plated 0.500 silver crowns £30 - £40

509

A 2014 House of Hanover 5oz silver coin £60 - £90

510

A Queen Elizabeth II 90th Birthday 5oz Silver Proof coin £60 - £90

511

A 2015 Sir Winston Churchill Jersey 5oz Silver Proof coin £60 - £90

512

A Boudica 5oz silver coin £60 - £90

513

A Royal Mint 2012 Diamond Jubilee Executive Proof Set in fitted leather case with COA £20 - £40

514

A 2002 Golden Jubilee Executive proof set with case and booklet £20 - £30

515

A 2002 Commonwealth Games Silver Proof £2 coin set consisting of the four £2 coins together with medal, box and booklet £80 - £120



Lot 505



516

A Royal Mint Silver Proof Bridges coin set with box and booklet £40 - £60

517

A Longest Reigning Monarch Silver Crown Set containing a 1889 silver crown and a 1977 silver commemorative crown together with a 2014 George and the Dragon Silver coin set £30 - £50

518

Three Numisproof silver 2oz royal commemorative pictorial coins £40 - £60

519

A Silver Proof 2015 Magna Carta £2 coin together with a Silver Proof 2014 £5 coin and a Silver Proof 2015 Churchill £5 coin £30 - £50

520

A Queen Victoria and Queen Elizabeth II Silver Proof Piedfort £5 coin pair together with a Coronation Jubilee Silver £5 three coin set £50 - £80

521

A 2012 Diamond Jubilee £5 Silver Proof coin together with a 2011 Royal Wedding £5 Silver Proof coin and a 2009 Britannia Silver £5 coin £30 - £50

522

A 2007 Diamond Wedding Anniversary Silver Proof crown coin together with a 2012 Silver Proof £5 coin and a Silver Proof 2013 £5 coin £30 - £50

523

A collection of seven Silver Proof Crown coins some having inset gemstones as issued by the London Mint Office. £100 - £150

524

A 2011 Lifetime of Service Silver Proof Piedfort £5 coin together with four other various Silver Proof £5 coins £70 - £100

525

A 2015 Buckingham Palace Silver £100 coin together with two Queen Elizabeth II 90th Birthday £20 Silver coins £50 - £80

526

A selection of silver coins to include a 2011 Duke of Edinburgh £5 Piedfort Proof coin, a 2014 75th Anniversary of the First Royal Visit to Canada \$20 fine silver coin, 2012 Royal Visit to the Solomon islands coin, 2015 Britannia coin etc £70 - £100

527

A Pobjoy Mint 2008 Sierra Leone \$50 dollars 999.9 gold coin with inset diamond, pearl, ruby and sapphire. £120 - £160

528

A 2002 Golden Jubilee 22ct gold proof £25 coin £180 - £220

529

A 2016 Silver Proof Piedfort Last Round Pound in presentation box with certificate £60 - £80



Lot 520



530

A 50th Anniversary of Decimalisation Australian Currency Set No.20/95 *£40 - £60*



Lot 531

531

A large selection of 208 presidential dollars from the Danbury mint, most being in sealed rolls. *£70 - £100*

532

A complete 'The most famous landmarks of the world' 'Masterpieces of architecture' silver coin bar set containing 10 2.5g 999 silver bars, together with another part set *£40 - £60*

533

A Lifetime of Service Commemorative Coin Cover collection, the five albums containing a variety of royal commemorative coin covers. *£50 - £100*

534

Two folders containing an assortment of first day coin and stamp covers to include 300th anniversary of the bank of England £2 covers, 50th anniversary of D-Day 50 pence coin cover, fine silver and gold coin covers etc. *£80 - £120*

535

Three Westminster collection 'The World's Most Famous Stamps' presentation covers to include a 1840 Penny Black stamp, 1841 Two-Penny Blue, 1854 6d Lilac and a Penny Red letter *£80 - £120*

536

A collection of 18 assorted commemorative coin and stamp presentation covers in Westminster presentation wallets. To include mainly silver proof coins and bullion coins *£80 - £120*

537

A part United States Postal Commemorative Society Statehood quarters collection contained in two volumes *£20 - £30*

538

A part 2002 Queen Elizabeth II Golden Jubilee coin set together with a selection of other commemorative coins *£60 - £100*

539

A queen Victoria full sovereign dated 1878 *£200 - £250*



Lot 539

540

A Edward VII full sovereign dated 1905 *£180 - £220*

541

A George V half sovereign dated 1913 *£80 - £120*

542

A George V half sovereign dated 1914 *£80 - £120*

543

A Edward VII half sovereign dated 1906 *£80 - £120*

544

A George V half sovereign dated 1912 *£80 - £120*

545

A George V half sovereign dated 1911 *£80 - £120*

546

A Queen Victoria shield back half sovereign dated 1871 *£100 - £150*



Lot 545



547

A collection of six French revolution period banknotes dated 1792. Denominations of Dix sous and Vingt-cinq sols. £50 - £80

548

A stamp collectors album containing a selection of stamps to include three Penny Blacks and three Two-Penny Blues. £80 - £120

549

A selection of world coinage and tokens to include 1896 South Africa Silver two shillings, US 1875 one cent, 1876 two Kronor, 1801 papal token, 1885 Sarawak one cent etc. £50 - £80

550

A cased set of six silver crowns to include a 1999 Millennium crown, 1977 jubilee crown etc. £40 - £60

551

A Lifetime of Service Commemorative Coin Cover collection, the four albums containing a variety of royal commemorative coin covers. £80 - £120

552 - 599

Spare Lots

Valuation Service

Should you require valuation advice or wish to consign items for our Fine Art Sales please contact us on 01926 889 100 or email us an image info@leauction.co.uk

www.leauction.co.uk



COLLECTABLE TOYS

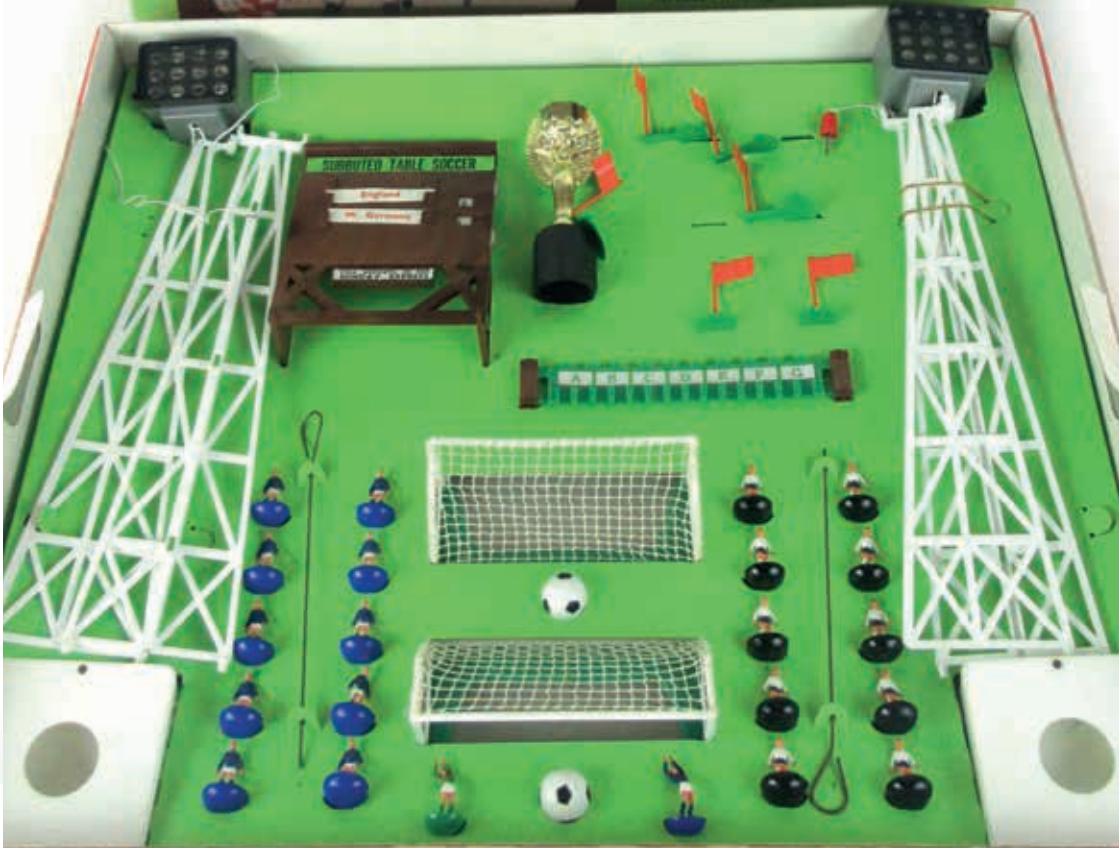
SUBBUTEO[®] TABLE SOCCER

WORLD CUP EDITION



TOP DRAW - WORLD CUP - MATCH SCOREBOARD
2 FLOODLIGHTS - HALF-TIME SCOREBOARD - 6 LINE
FLAGS - 2 CONTINENTAL BALLS - 2 GOALS
2 INTERNATIONAL TEAMS

LOWER DRAW - ENGLAND'S TEAM - TARGET
BOARD - FENCE SURROUND - CLUB FLAG - TV TOWER
TV CAMERA/CAMERAMAN - TV MONITOR/COMMENT-
ATOR - REFEREE & LINESMEN - MANAGER & TRAINER
4 PRESS PHOTOGRAPHERS - PLAYING CLOTH
REFEREE'S WHISTLE



COLLECTABLE TOYS

600

A boxed Pelham Puppet modelled as a skeleton
£40 - £60

601

Two boxed Pelham 'DeLuxe' Puppets modelled as Mother Dragon and Macboozle, together with a boxed Pelham Puppet modelled as Caterpillar and another unboxed example (4) *£80 - £120*

602

A group of diecast vehicles including sixteen boxed 1980's Corgi vehicles together with a large quantity of unboxed cars, cherrypicker etc. (Qty) *£40 - £60*

603

A boxed Tri-ang Railways RS.6 OO/HO Gauge train set, together with two boxed pieces of rolling stock *£40 - £60*

604

A boxed Meccano Site Engineering Set, number 5 *£20 - £30*

605

A quantity of loose OO Gauge railway pieces including a Hornby Silver King loco and tender, a Britannia loco and tender, a group of carriages, track, buildings, control box etc. *£80 - £120*

606

A boxed Scalextric Blowout! C670 racing set
£40 - £60

607

A group of twenty-four tinplate motorcycles, some with sidecars, by Oriental Metal Industries and other makers, together with a boxed Japanese Friction Powered Motorcycle
£100 - £200

608

A collection of over one hundred diecast motorcycles and other vehicles, each in a perspex display case, contained in two boxes
£80 - £120

609

An extensive collection of approximately one hundred diecast motorcycles, mainly boxed, including Guiloy, Britains, Zylmex etc., together with a Chinese 'Great Flying Boat', contained in six boxes *£200 - £300*

610

A group of boxed Scalextric sets including: Dunlop Bridge, Porsche with lights, Control Tower, Accessory Pack, Two Cars with Lights sets, together with a group of track and other unboxed items *£60 - £100*

611

An extensive collection of boxed Lego including battleships, castles, island forts etc., together with a large group of unboxed lego pieces
£150 - £200

612

A group of boxed and unboxed diecast vehicles including Matchbox Models of Yesteryear, Corgi etc. *£50 - £80*

613

A collection of Hornby O Gauge tinplate railway items including a loco and tender, two carriages, three stations, boxed wagons, track etc.
£80 - £120



Lot 605 (part)

614

A group of four OO Gauge locomotives, including: Mainline Railways 1CO-CO1 blue, Mainline Railways 4-6-0 Jubilee Class 5XP L.M.S. Crimson, Hornby Railways R.084 B.R. Class 29 diesel blue, Airfix Royal Scots Fusilier L.M.S. Livery, together with three unboxed locomotives and a group of accessories including wheels etc. £80 - £120

615

A group of vehicles and kits including a boxed Tri-ang M 005 Ford Zephyr Saloon, a Tokyo Plamo racing model car kit, a Wrenn Formula 152 car etc. £40 - £60

616

A group of N and TT gauge track, buildings, carriages etc. including a Windsor Castle loco and tender (af) £40 - £60

617

A group of Britains lead farmyard vehicles, animals and equipment including a timber wagon, plough, milk cart etc. together with a group of boxed diecast vehicles by various makers £60 - £80

618

A Dinky Supertoys Guy Van, 514, in a reproduction box £30 - £40

619

A boxed Japanese 'Charley Weaver' battery powered bartender £30 - £40

620

A boxed Jacklex lead Military Pageant set £30 - £40

621

A boxed Britains lead 'Eyes Right' set £20 - £30

Lot 619

**622**

An late 19th/early 20th century German articulated doll with a porcelain head, by Dressel, with the associated red velvet clothing £30 - £50

623

A German doll with a porcelain head by Armand Marseille £20 - £30

624

A 1966 Ideal Toy Corp doll with dress £15 - £20

625

A set of Peggy Nisbet Royal Miniature Figures modelled as Henry VIII and his six wives £30 - £50

626

A French doll with a porcelain head and christening clothing by Societe Francaise de Fabrication de Bebes et Jouets £50 - £80

627

A boxed Corgi Queen Elizabeth Golden Jubilee State Landau £20 - £30

628

A small group of diecast including a Dinky Corvette, a Dinky Toys Eagle etc. (8) £30 - £40



Lot 629

629

A cast metal novelty money box named 'Dinah', h. 18 cm £40 - £60

630

Two Bayko building sets together with a group of loose construction pieces £20 - £30

631

A collection of miniature skateboarding items including boards, ramps, spares etc. £30 - £50

632

A collection of Tri-ang TT Gauge railway items, mainly boxed, including T5 and T2 train sets, a T31 Station Set, a T96 loco, a T97 loco, track, water tower etc. £150 - £200

633

Star Wars Collection: Palitoy 1982 Rebel Transport Vehicle, Palitoy 1982 Scout Walker Vehicle, Kenner 1996 Hans Solo 7 Luke Skywalker in Stormtrooper Gear, Kenner 1996 Rebel Blockade Runner, Kenner 1982 Radar Laser Cannon, Kenner 1982 Tri-pod Laser Cannon, Kenner 1983 AST-5 Armoured Sentinel Transport Vehicle, Kenner 1983 ISP-6 Imperial Shuttle Pod Vehicle £200 - £300

634

Star Wars Collection: Kenner 1983 Speeder Bike, Kenner 1983 Ewok Combat Glider, Kenner 1983 Ewok Assault Catapult Accessory, Kenner 1982 Vehicle Maintenance Energizer, Palitoy 1980 PDT-8 Personnel Deployment Transport, Palitoy 1983 INT-4 Interceptor, Palitoy 1983 One-Man Sail Skiff, Palitoy 1983 X-Wing Fighter Vehicle, Miro-Meccano 1983 CAP-2 Captivator, Miro-Meccano 1983 MLC-3 Mobile Laser Cannon £150 - £200

635

A vintage toy drum painted in red and black livery £20 - £30

636

An articulated wooden figure £30 - £50



637

A set of three West German clockwork monkeys with cymbals, drum and maracas £80 - £120

638

A group of unboxed Dinky Supertoys diecast vehicles including a Leyland Octopus, two Foden flatbeds, a 955 Fire Engine a Tank Transporter 660, a Centurion Tank 651 and a Commer van, together with a Corgi 007 Moonbuggy £50 - £80

Lot 639



639

A clockwork Hornby train goods set No. 20, 0 gauge £30 - £50



Lot 640

640

A Silberpfeil tin plate Mercedes with steering action and box £40 - £60



Lot 641

641

A boxed Dinky supertoy recovery tractor No. 661 £20 - £30



Lot 642

642

Dinky toys 956 turntable fire escape, in original box £40 - £60



Lot 643

643

Dinky supertoys 981 horse box in original box £40 - £60



Lot 633

Lot 633

All estimates exclude buyer's premium of 21% including VAT which is payable in addition. Forthcoming sales details at www.leanedown.co.uk



Lot 644

644

Dinky toys 955 fire engine with extending ladder in original box £20 - £30

645

Dinky toys 982 pullmore car transporter along with the loading ramp in original box £40 - £60

646

A selection of playworn Dinky toys to include 430 breakdown lorry (later painted), Blaw knox bulldozer, 20 ton lorry-mounted crane etc. (qty) £80 - £120

647

A boxed Derwent electric 14" Cabin Cruiser £20 - £30

648

A Corgi Avro Lancaster B.I from the aviation archive series 1:72 scale in original box £50 - £80

649

A Lego system pirate ship (6286) in original box with instructions £30 - £50

650

A collection of Transformers to include Optimus Prime, Dinobots and others £30 - £40

651

Star Wars, Return of the Jedi action figure - Logray (Ewok Medicine Man) in box £20 - £30



Lot 651



Lot 645



652

Seven boxes of Britain's metal soldiers from the 'Zulu War' and 'Redcoats' series

£20 - £30

653

A collection of 7 Lledo trackside lorries along with two Corgi road transport heritage lorries and an Eddie Stobart lorry, all in original boxes

£50 - £80

654

A Trix construction kit including a Permag electric motor and instructions

£20 - £30

655

A collection of die cast aeroplanes incorporating six Corgi 'Fighter Scramble' single planes, Corgi 'Fighter Scramble' set of six planes, Four Corgi '100 years of flight' planes and two Corgi 'Aviation Archive' planes, all in original boxes

£80 - £120

656

A boxed Meccano set 3 along with miscellaneous Meccano parts and instructions

£20 - £30

657

A Corgi Classic Thunderbirds FAB 1 die cast model set No CC00601 in original box. Appears mint and box unopened

£30 - £40

Lot 657



Lot 658

658

A Corgi 1937 Rolls Royce Sedance DeVille 24 carat gold plated limited edition, mint, boxed with certificate 0642/5000

£20 - £30

659

A collection of twenty six die cast model cars 1:43 scale, to include six Corgi 'Triumph collection' and ten 'Jaguar collection' etc.

£150 - £250

660

A Collection of Star Wars figures including Luke Skywalker and Han Solo, along with Star Wars ephemera including Pez limited edition Darth Vader helmet tin, books etc.

£50 - £80





Lot 666

662

A collection of 'The Avengers' comics from 22nd Sept 1973 to 14th July 1978, No's. 1-72, 78-90, 131-132, 134-136, 143-145, 147-148 *£150 - £250*

663

A Matchbox series collectors case No. 41 containing forty eight various die cast vehicles *£40 - £60*

664

A Matchbox Powertrack Indianapolis 5000 set, with working headlights and a banked curve! In original box *£15 - £25*

665

A Dare Devil 'TriK-Trak' set with two racing cars in original box *£20 - £30*

666

A Subbuteo 1970 World Cup edition table football set including three teams, World cup, match scoreboard, two floodlights, whistle etc. in original box *£50 - £80*

661

A boxed 'Coaxing the pigs to market' game along with a boxed Escalado horse racing game *£30 - £50*

Lot 662



667

A collection of table football games and accessories to include playing surfaces, boxed 'Striker League Champions', Waddingtons 'Table Soccer' etc. £20 - £30

668

Four boxed 'Classic Commercials' from Corgi including closed top tram, limited edition Hardings AEC Regal Coach, limited edition Ruddles Bedford O Series & Thornycraft Beer Truck and a limited edition AEC Regal coach £30 - £50

669
A 1951 edition of The Beano Book £50 - £80

670
Eight boxed die cast Coca-Cola toy vehicles £20 - £30

671
A collection of die cast model cars to include seven Corgi classic models, Lledo 50th anniversary of Pearl Harbor U.S. Navy Collection etc. (19) £50 - £80

672

A quantity of painted lead farmyard animals and figures some being Britains £100 - £150



Lot 672 (part)





LOCKE & ENGLAND

AUCTIONEERS & VALUERS

TO BE SOLD BY AUCTION

Thursday 29th November 2018

**Antique Furniture &
Collectors' Items**

Commencing at 11.00am



Thursday sales of Antiques and Collectors items are held bi-monthly at our Leamington Spa saleroom. These sales incorporate a range of Antique Furniture, Pictures, Ceramics & Glass, Silver, Metalware, Boxes and Caddies, Militaria and other collector's items are offered for sale.

**Viewing: Saturday 24th November – 10am - 2pm, Tuesday 27th November - 9am - 5pm
Wednesday 28th November – 9am - 7pm, Morning of sale from 9am**

AUCTION ENTRIES INVITED

Leamington Spa Auction Centre 12 Guy Street, Leamington Spa, CV32 4RT
01926 889 100 or valuers@leauction.co.uk

www.leauction.co.uk

HAMMER PRICES - JULY 2018

| | | | | | | | | | | | | | |
|-----|-------|-----|-------|-----|-------|-----|------|-----|-------|-----|-------|-----|-------|
| 1 | £200 | 161 | £100 | 302 | £80 | 407 | £50 | 447 | £240 | 528 | £50 | 585 | £400 |
| 2 | £80 | 162 | £200 | 304 | £1000 | 408 | £52 | 448 | £65 | 529 | £50 | 587 | £240 |
| 3 | £100 | 163 | £290 | 305 | £2800 | 409 | £40 | 449 | £32 | 530 | £250 | 588 | £180 |
| 5 | £50 | 164 | £100 | 306 | £100 | 410 | £39 | 450 | £105 | 531 | £160 | 590 | £70 |
| 7 | £400 | 167 | £60 | 307 | £24 | 411 | £50 | 451 | £65 | 532 | £260 | 591 | £95 |
| 8 | £190 | 168 | £230 | 308 | £30 | 412 | £58 | 452 | £85 | 533 | £100 | 594 | £180 |
| 9 | £100 | 169 | £55 | 309 | £50 | 413 | £30 | 453 | £50 | 536 | £10 | 595 | £70 |
| 10 | £100 | 170 | £50 | 311 | £130 | 414 | £40 | 454 | £65 | 538 | £90 | 596 | £70 |
| 11 | £80 | 173 | £1000 | 312 | £55 | 415 | £18 | 455 | £87 | 539 | £20 | 597 | £200 |
| 13 | £50 | 174 | £150 | 313 | £40 | 416 | £80 | 456 | £30 | 540 | £115 | 599 | £120 |
| 14 | £880 | 175 | £200 | 314 | £40 | 417 | £75 | 457 | £115 | 541 | £350 | 600 | £85 |
| 15 | £200 | 177 | £100 | 316 | £80 | 418 | £600 | 458 | £290 | 542 | £530 | 601 | £70 |
| 17 | £50 | 179 | £160 | 317 | £50 | 419 | £25 | 460 | £210 | 543 | £210 | 602 | £220 |
| 18 | £500 | 182 | £300 | 319 | £24 | 420 | £25 | 461 | £40 | 544 | £220 | 603 | £240 |
| 19 | £50 | 201 | £22 | 320 | £50 | 421 | £45 | 462 | £200 | 545 | £35 | 604 | £290 |
| 20 | £150 | 202 | £120 | 321 | £200 | 422 | £45 | 500 | £150 | 546 | £60 | 606 | £75 |
| 22 | £50 | 203 | £20 | 322 | £20 | 423 | £65 | 501 | £70 | 547 | £290 | 609 | £1200 |
| 23 | £160 | 204 | £3300 | 323 | £170 | 424 | £30 | 502 | £80 | 548 | £130 | 610 | £140 |
| 24 | £75 | 205 | £2000 | 324 | £80 | 425 | £77 | 504 | £250 | 549 | £320 | 611 | £140 |
| 25 | £100 | 206 | £300 | 325 | £25 | 426 | £60 | 505 | £120 | 550 | £130 | 613 | £60 |
| 26 | £150 | 208 | £50 | 326 | £280 | 427 | £60 | 506 | £70 | 552 | £150 | 614 | £30 |
| 27 | £70 | 209 | £30 | 329 | £50 | 428 | £35 | 507 | £190 | 553 | £250 | 615 | £55 |
| 29 | £600 | 210 | £55 | 331 | £130 | 429 | £50 | 509 | £45 | 556 | £45 | 616 | £100 |
| 30 | £70 | 211 | £45 | 332 | £120 | 430 | £50 | 511 | £100 | 557 | £30 | 617 | £80 |
| 31 | £120 | 212 | £50 | 333 | £20 | 431 | £170 | 512 | £65 | 558 | £30 | 618 | £80 |
| 32 | £50 | 213 | £140 | 334 | £80 | 432 | £60 | 513 | £190 | 559 | £18 | 619 | £140 |
| 33 | £250 | 214 | £30 | 335 | £70 | 433 | £80 | 514 | £120 | 561 | £140 | 620 | £80 |
| 34 | £3500 | 215 | £50 | 337 | £50 | 434 | £120 | 515 | £90 | 562 | £1400 | 621 | £80 |
| 37 | £30 | 216 | £180 | 338 | £26 | 435 | £28 | 516 | £190 | 563 | £50 | 622 | £55 |
| 38 | £155 | 217 | £60 | 339 | £200 | 436 | £25 | 517 | £280 | 567 | £35 | 624 | £1450 |
| 41 | £260 | 218 | £360 | 340 | £50 | 437 | £75 | 518 | £100 | 568 | £600 | 625 | £1300 |
| 42 | £40 | 220 | £20 | 341 | £45 | 438 | £45 | 519 | £150 | 569 | £80 | 626 | £90 |
| 50 | £80 | 221 | £40 | 344 | £20 | 439 | £250 | 520 | £60 | 571 | £100 | 627 | £250 |
| 60 | £150 | 222 | £50 | 347 | £40 | 440 | £160 | 521 | £70 | 575 | £250 | 628 | £250 |
| 61 | £50 | 223 | £20 | 400 | £380 | 441 | £150 | 522 | £240 | 576 | £150 | | |
| 70 | £120 | 224 | £40 | 401 | £240 | 442 | £130 | 523 | £600 | 577 | £480 | | |
| 71 | £50 | 225 | £240 | 402 | £240 | 443 | £75 | 524 | £400 | 580 | £30 | | |
| 155 | £20 | 226 | £220 | 404 | £85 | 444 | £35 | 525 | £40 | 581 | £120 | | |
| 157 | £70 | 300 | £300 | 405 | £37 | 445 | £30 | 526 | £3000 | 582 | £20 | | |
| 158 | £190 | 301 | £180 | 406 | £55 | 446 | £100 | 527 | £26 | 583 | £55 | | |

Valuations at Locke & England

If you have an individual item or a collection that you are thinking of selling we would be delighted to provide complimentary valuation advice at one of our scheduled events. Alternatively, you may prefer to email us an image of your collection or treasures, or ring us to arrange a house visit by one of our specialists.

W&H PEACOCK
AUCTIONEERS & VALUERS

TO BE SOLD BY AUCTION

Thursday 27th September
Architectural Salvage and Bygones

Commencing at 10.30am



A specialist sale to include subject to delivery Agricultural Bygones, Vintage Memorabilia, Automobilia, Architectural Salvage and Horticultural and many other vintage items

Viewing: Wednesday 26th September 9am to 8pm and morning of sale from 9am

AUCTION ENTRIES INVITED

St Neots Auction Centre
75 New Street, St Neots, Cambridgeshire PE19 1AJ
01480 474 550 or sn@peacockauction.co.uk

www.peacockauction.co.uk

ENTRIES NOW INVITED

For our next specialist auction of Antiques and Collectable's at the Leamington Spa Auction Centre

AUCTION Highlights



A 19th century French ebony, satinwood and brass mounted Bonheur du jour, the galleried breakfast top having two cupboard doors with cherub Sevres plaques flanking central mirrored display alcove over the top with single fitted drawer behind a brass guilloche frieze incorporating Sevres roundels above the two tiered, mirror backed base with turned and fluted parcel gilt supports, h. 151 cm, w. 124 cm, d. 58 cm

Sold for £3500

Terms used in this catalogue have the following meanings.

Please note that all statements in this catalogue, regarding authorship, attribution, origin, date, age, provenance and condition are statements of opinion and are not treated as a statement of fact.

1. A N ARTIST

In our opinion, the work is by the artist.

2. ATTRIBUTED TO A N ARTIST

In our opinion, the work is of the period of the artist which may be whole or in part the work of the artist.

3. STUDIO, (CIRCLE OR WORKSHOP) OF A N ARTIST

In our opinion, the work is of the period and closely relates to his style.

4. SCHOOL OF A N ARTIST

In our opinion, the work is by a pupil or a follower of the artist.

5. MANNER OF A N ARTIST

In our opinion, the work is in the style of the artist and is of a later period.

6. AFTER A N ARTIST

In our opinion, this work is a copy of the artist.

7. ASCRIBED TO A N ARTIST

In our opinion, this work is not by the artist, however, previous scholarship has noted this to be a work by the artist.

8. SIGNED (OR DATED)

The work has a signature (or date) which is in our opinion is genuine.

9. BEARS SIGNATURE (OR DATE)

The work has a signature (or date) which in our opinion is not authentic.

Notes
