

Product and Information Pack



We are proud to be an independent, family-run business, committed to supply products for the capture and containment of waste and recyclables.

To be the most resourceful company in plastics, supplying products that help make the world cleaner, greener, and more economical.

Index

- Refuse Sacks
- LowCO₂t Refuse Sacks
- Compactor Sacks & Wheeled Bin Liners
- Pedal, Square & Swing Bin Liner
- Sansafe® Antimicrobial & Scented Liners
- Kerbside & Multi-trip Recycling Bags
- Compostable & Anaerobic Digestion
- Compostable vs. Biodegradable - What is the difference?
- Disposables
- Clinical Waste
- Building & Construction
- The Cleaning and Hygiene Suppliers Association





Refuse Sacks

Code	Description	Size (mm)	Size (inches)	Packing	MNBW
Black Refuse - 80L					
LD16D	80L 8kg CHSA	(457)x737x838	(18)x29x33	200 pcs/carton (8 folds x 25 pcs)	4.63
HD34F2	80L 10kg CHSA LowCO ₂ t™	(457)x737x838	(18)x29x33	200 pcs/carton (4 poly-packs x 50 pcs)	3.31
HD34E2	80L 12kg CHSA LowCO ₂ t™	(457)x737x838	(18)x29x33	200 pcs/carton (4 poly-packs x 50 pcs)	4.47
HD34ER	80L 12kg CHSA LowCO ₂ t™	(457)x737x838	(18)x29x33	400 pcs/carton (8 rolls x 50 pcs)	8.94
LD34C	80L 12kg CHSA	(457)x737x838	(18)x29x33	200 pcs/carton (4 folds x 50 pcs)	5.44
LD34B	80L 12kg CHSA	(457)x737x838	(18)x29x33	200 pcs/carton (4 folds x 50 pcs)	6.42
LD34A	80L 20kg CHSA	(457)x737x838	(18)x29x33	200 pcs/carton (8 folds x 25 pcs)	7.19
Black Refuse - 90L					
HD38G	90L 8kg CHSA LowCO ₂ t™	(457)x737x965	(18)x29x38	200 pcs/carton (4 poly-packs x 50 pcs)	3.13
LD39D	90L 10kg CHSA	(457)x737x965	(18)x29x38	200 pcs/ carton (8 folds x 25 pcs)	4.93
HD39F2	90L 10kg CHSA LowCO ₂ t™	(457)x737x965	(18)x29x38	200 pcs/carton (4 poly-packs x 50 pcs)	4.03
LD39C	90L 12kg CHSA	(457)x737x965	(18)x29x38	200 pcs/carton (8 folds x 25 pcs)	6.27
LD39CR	90L 12kg CHSA	(457)x737x965	(18)x29x38	200 pcs/carton (8 rolls x 25 pcs)	6.27
HD39E2	90L 12kg CHSA LowCO ₂ t™	(457)x737x965	(18)x29x38	200 pcs/carton (4 poly-packs x 50 pcs)	5.15
LD38/15	90L 15kg CHSA	(457)x737x965	(18)x29x38	200 pcs/carton (4 folds x 50 pcs)	5.15
LD39B	90L 15kg CHSA	(457)x737x965	(18)x29x38	200 pcs/carton (8 folds x 25 pcs)	7.39
LD39A	90L 20kg CHSA	(457)x737x965	(18)x29x38	200 pcs/carton (8 folds x 25 pcs)	8.29
LD39AR	90L 20kg CHSA	(457)x737x965	(18)x29x38	200 pcs/carton (8 rolls x 25 pcs)	8.29
LD39/2	90L 20kg CHSA	(457)x737x965	(18)x29x38	200 pcs/carton (8 folds x 25 pcs)	11.20
LD39/4	90L 20kg CHSA	(457)x737x965	(18)x29x38	100 pcs/carton (4 folds x 25 pcs)	7.28
Black Extra Wide Refuse - 120L					
7925	120L 12kg CHSA	(457)x838x965	(18)x33x38	200 pcs/carton (8 folds x 25 pcs)	7.64
LD35	120L 20kg CHSA	(483)x864x965	(19)x34x38	200 pcs/carton (8 folds x 25 pcs)	9.71
Natural Refuse - 90L					
NA38/10	90L 10kg CHSA LowCO ₂ t™	(457)x737x965	(18)x29x38	200 pcs/carton (4 poly-packs x 50 pcs)	2.97
NA2939E	90L 12kg CHSA	(457)x737x965	(18)x29x38	200 pcs/carton (4 packs x 50 pcs)	3.81
NA2939ER	90L 12kg CHSA	(457)x737x965	(18)x29x38	200 pcs/carton (8 rolls x 25 pcs)	3.81
NA2939BS	90L 12kg CHSA	(457)x737x965	(18)x29x38	200 pcs/carton (8 folds x 25 pcs)	6.27
NA38/15	90L 15kg CHSA LowCO ₂ t™	(457)x737x965	(18)x29x38	200 pcs/carton (4 poly-packs x 50 pcs)	6.27
NA2939/14	90L 15kg CHSA	(457)x737x965	(18)x29x38	200 pcs/carton (8 folds x 25 pcs)	7.17
Natural Extra Wide Refuse - 120L					
NA7925	120L 15kg CHSA	(457)x838x965	(18)x33x38	200 pcs/carton (8 folds x 25 pcs)	7.64
Coloured Refuse - 90L					
BL38/10	90L 10kg Blue CHSA LowCO ₂ t™	(457)x737x965	(18)x29x38	200 pcs/carton (4 polypacks x 50 pcs)	2.97
GN38/10	90L 10kg Green CHSA LowCO ₂ t™	(457)x737x965	(18)x29x38	200 pcs/carton (4 polypacks x 50 pcs)	2.97
RD38/10	90L 10kg Red CHSA LowCO ₂ t™	(457)x737x965	(18)x29x38	200 pcs/carton (4 polypacks x 50 pcs)	2.97
YL38/10	90L 10kg Yellow CHSA LowCO ₂ t™	(457)x737x965	(18)x29x38	200 pcs/carton (4 polypacks x 50 pcs)	2.97
BL2939BS	90L 12kg Blue CHSA	(457)x737x965	(18)x29x38	200 pcs/carton (8 folds x 25 pcs)	6.27
GN2939BS	90L 12kg Green CHSA	(457)x737x965	(18)x29x38	200 pcs/carton (8 folds x 25 pcs)	6.27
RD2939BS	90L 12kg Red CHSA	(457)x737x965	(18)x29x38	200 pcs/carton (8 folds x 25 pcs)	6.27
WH2939BS	90L 12kg White CHSA	(457)x737x965	(18)x29x38	200 pcs/carton (8 folds x 25 pcs)	6.27
YL2939BS	90L 12kg Yellow CHSA	(457)x737x965	(18)x29x38	200 pcs/carton (8 folds x 25 pcs)	6.27
BL38/12	90L 12kg Blue CHSA	(457)x737x965	(18)x29x38	500 pcs/carton (10 polypack x 50 pcs)	12.32
GN2939A	90L 18kg Green CHSA	(457)x737x965	(18)x29x38	200 pcs/carton (8 folds x 25 pcs)	8.96
YL38/20	90L 20kg Yellow CHSA	(457)x737x965	(18)x29x38	100 pcs/carton (4 folds x 25 pcs)	5.60








LowCO₂t Refuse Sacks

Our LowCO₂t products are engineered to provide maximum performance using minimal resources. This not only helps to reduce the volume of plastic used, it also helps by cutting carbon emissions during production and transportation.



Code	Description	Size (mm)	Packaging	MNBW
HD34F2	80L 10kg CHSA LowCO ₂ t™ Black Refuse Sack	(457)x737x838mm	200pcs/cartons (4 poly-packs x 50pcs)	3.31kg
HD34E2	80L 12kg CHSA LowCO ₂ t™ Black Refuse Sack	(457)x737x838mm	200pcs/cartons (4 poly-packs x 50pcs)	4.47kg
HD38G	90L 8kg CHSA LowCO ₂ t™ Black Refuse Sack	(457)x737x965mm	200pcs/cartons (4 poly-packs x 50pcs)	3.13kg
HD39F2	90L 10kg CHSA LowCO ₂ t™ Black Refuse Sack	(457)x737x965mm	200pcs/cartons (4 poly-packs x 50pcs)	4.03kg
HD39E2	90L 12kg CHSA LowCO ₂ t™ Black Refuse Sack	(457)x737x965mm	200pcs/cartons (4 poly-packs x 50pcs)	5.15kg
NA38/10	90L 10kg CHSA LowCO ₂ t™ Natural Refuse Sack	(457)x737x965mm	200pcs/cartons (4 poly-packs x 50pcs)	2.97kg
NA38/15	90L 15kg CHSA LowCO ₂ t™ Natural Refuse Sack	(457)x737x965mm	200pcs/cartons (4 poly-packs x 50pcs)	5.37kg
BL38/10	90L 10kg CHSA LowCO ₂ t™ Blue Refuse Sack	(457)x737x965mm	200pcs/cartons (4 poly-packs x 50pcs)	2.97kg
GN38/10	90L 10kg CHSA LowCO ₂ t™ Green Refuse Sack	(457)x737x965mm	200pcs/cartons (4 poly-packs x 50pcs)	2.97kg
RD38/10	90L 10kg CHSA LowCO ₂ t™ Red Refuse Sack	(457)x737x965mm	200pcs/cartons (4 poly-packs x 50pcs)	2.97kg
YL38/10*	90L 10kg CHSA LowCO ₂ t™ Yellow Refuse Sack	(457)x737x965mm	200pcs/cartons (4 poly-packs x 50pcs)	2.97kg

* Coming soon

-  **Less plastic**
-  **More on a pallet**
-  **Attractive white cartons**
-  **Minimum of 30% recycled material**
-  **Lower greenhouse gas emissions = Lower CO₂**





Compactor Sacks & Wheeled Bin Liners

We offer a range of wheeled bin liners in blends and formulations to suit the application, whether it is for a high specification/strength or for maximum economy. Standard colours are black, natural (clear), green, and blue, with bespoke options also available in all colours.

Code	Description	Size (mm)	Size (inches)	Packing	MNBW
Black Compactor - 140L					
BK3546	140L 18kg CHSA	(508)x864x1168	(20)x34x46	100 pcs/carton (4 folds x 25 pcs)	5.08
BK3546/22	140L 20kg CHSA	(508)x864x1168	(20)x34x46	100 pcs/carton (4 folds x 25 pcs)	6.99
7407	140L 20kg CHSA	(508)x864x1194	(20)x34x47	100 pcs/carton (4 folds x 25 pcs)	8.93

Black Wheeled Bin Liner - 240L					
8871	240L Wheeled Liner	(762)x1143x1372	(30)x45x54	100 pcs/carton (4 folds x 25 pcs)	4.94
BK4560S	240L Wheeled Lift	(762)x1143x1372	(30)x45x54	100 pcs/carton (4 poly-packs x 25 pcs)	6.91
BK4554/2	240L Wheeled Lift +	(762)x1143x1372	(30)x45x54	100 pcs/carton (4 folds x 25 pcs)	10.86
BK5054	240L Oversize Wheeled Lift	(700)x1270x1372	(28)x50x54	100 pcs/carton (4 folds x 25 pcs)	10.70
BK50543	240L Oversize Wheeled Lift +	(762)x1270x1372	(30)x50x54	50 pcs/carton (2 folds x 25 pcs)	8.23

Natural Compactor Sack - 140L					
NAT3542	140L 18kg CHSA	(508)x864x1041	(20)x34x41	100 pcs/carton (4 packs x 25 pcs)	6.23
NA46/20	140L 20kg CHSA	(508)x864x1168	(20)x34x46	100 pcs/carton (4 poly-packs x 25 pcs)	2.70
NAT3446	140L 18kg CHSA	(508)x864x1041	(20)x34x46	100 pcs/carton (4 folds x 25 pcs)	5.08
NA3446/18	140L 20kg CHSA	(508)x864x1168	(20)x34x46	100 pcs/carton (4 folds x 25 pcs)	6.99

Natural Wheeled Bin Liner - 240L					
NA4554/15	240L Wheeled Lift	(762)x1143x1372	(30)x45x54	100 pcs/carton (4 folds x 25 pcs)	7.89

Coloured Compactor - 140L					
GN3947/15	140L 18kg CHSA Green	(500)x975x1143	(20)x39x47	100 pcs/carton (4 folds x 25 pcs)	5.26
BL3447	140L 20kg CHSA Blue	(508)x864x1194	(20)x34x47	100 pcs/carton (4 folds x 25 pcs)	7.15



Pedal, Square & Swing Bin Liner

We supply an extensive range of pedal, square and swing bin liners, in varying qualities across the range. All our liners are boxed and clearly labelled with full dimensions and minimum guaranteed net box weight.

Code	Description	Size (mm)	Size (inches)	Packing	MNBW
Pedal Bin Liner - 15L					
PBLT	15L White Pedal	(275)x425x425	(11)x17x17	1000 pcs/carton (10 poly-packs x 100 pcs)	1.14
PBL	15L White Pedal	(275)x450x450	(11)x18x18	1000 pcs/carton (10 poly-packs x 100 pcs)	1.91
PBLR	15L White Pedal	(275)x450x450	(11)x18x18	4000pcs/carton (10 packs x 10 rolls of 40 pcs)	8.93
PBL80	15L White Pedal	(275)x450x450	(11)x18x18	1000 pcs/carton (10 poly-packs x 100 pcs)	4.78
PBL80R100	15L White Pedal	(275)x450x450	(11)x18x18	1000 pcs/carton (10 rolls x 100 pcs)	4.78
22511	15L Yellow Pedal	(254)x457x457	(10)x18x18	500 pcs/carton (10 rolls x 50 pcs)	4.93

Square Bin Liner - 30L					
SBL24T	30L White Square	(375)x600x600	(15)x24x24	1000 pcs/carton (10 poly-packs x 100 pcs)	2.55
SBL24	30L White Square	(375)x600x600	(15)x24x24	1000 pcs/carton (10 poly-packs x 100 pcs)	3.40
SBL24/11	30L White Square	(375)x600x600	(15)x24x24	1000 pcs/carton (10 poly-packs x 100 pcs)	5.67
SBL2480	30L White Square	(375)x600x600	(15)x24x24	500 pcs/carton (5 poly-packs x 100 pcs)	4.25
2557	30L Black Square	(375)x600x600	(15)x24x24	500 pcs/carton (5 poly-packs x 100 pcs)	3.97
1799	30L Natural Square	(375)x600x600	(15)x24x24	500 pcs/carton (5 poly-packs x 100 pcs)	5.10

Swing Bin Liner - 35L - 50L					
SBLR	35L White Swing	(325)x575x700	(13)x23x28	2000 pcs/carton (10 poly-packs x 10 rolls x 20 pcs)	8.87
SBL23T	40L White Swing	(325)x575x750	(13)x23x30	1000 pcs/carton (10 poly-packs x 100 pcs)	3.05
SBL23	40L White Swing	(325)x575x750	(13)x23x30	1000 pcs/carton (10 poly-packs x 100 pcs)	4.07
SBL	40L White Swing	(325)x575x750	(13)x23x30	500 pcs/carton (5 poly-packs x 100 pcs)	3.39
SBL80	40L 5kg White Swing	(325)x575x750	(13)x23x30	500 pcs/carton (5 poly-packs x 100 pcs)	5.09
SBL80R100	40L 5kg White Swing	(330)x584x737	(13)x23x29	1000 pcs/carton (10 rolls x 100 pcs)	10.16
2753	50L 5kg White Swing	(330)x650x800	(13)x26x32	500 pcs/carton (5 poly-packs x 100 pcs)	6.14



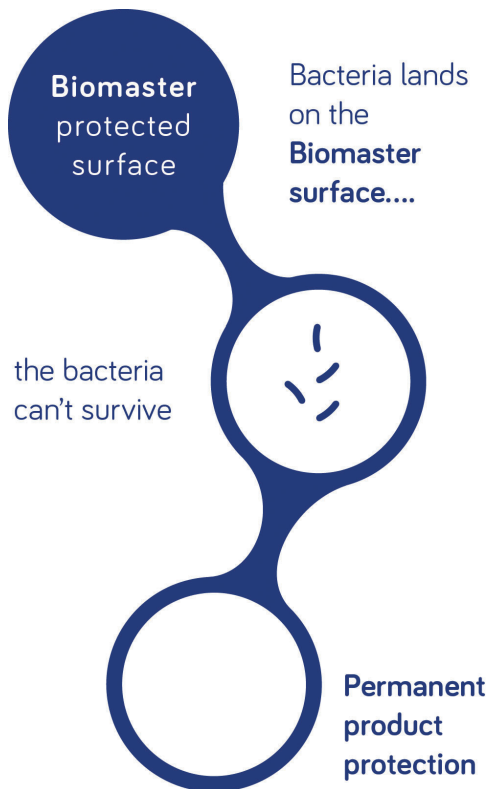
Sansafe® Antimicrobial & Scented Liners



Our Sansafe® liners are manufactured to incorporate Biomaster® silver antimicrobial technology, which is added during the film extrusion process, the bags are protected against harmful bacteria such as E. coli and Legionella, while a Scentmaster® fragrance helps mask unpleasant odours, both inside and outside the liners.



Code	Description	Size (mm)	Size (inches)	Packing	MNBW
Sansafe® Antimicrobial & Scented Liners					
SANSAFE.30L	30L 5kg White - Pine Scent	615x590	24x23	250 pcs/carton (10 rolls x 25 pcs)	2.86
SANSAFE.TIG	75L 10kg CHSA Yellow Tiger Stripe - Lemon Scent	737x915	29x36	500 pcs/carton (20 rolls x 25 pcs)	7.43



Sansafe® liners save operatives time and money by reducing and even eliminating the need to use separate antimicrobial products during waste collection and disposal.

They can also support a facility's infection prevention and control programme.





Kerbside & Multi-trip Recycling Bags

Our Kerbie® brand kerbside recycling bags are tailor-made for the collection of dry recyclables, such as plastic, paper, cans and cardboard.

Easy to store and distribute, Kerbie® bags are UV resistant and manufactured from recyclable 100% woven polypropylene, making them tough and durable.



Bags are available coated or uncoated (stock bags are made from uncoated fabric), with a weighted base option to ensure that they stay put and are fitted with two strap handles and a tipping strap for easier handling.

An optional clear, re-sealable document pouch can be sewn in or incorporated to contain printed material to promote recycling schemes, instructions as to what should be placed in the bag for collection, waste and recycling calendars and other council communication.

Code	Description	Size (mm)	Strap Handles	Tipping Strap	Securing Tie
Kerbie Bags					
PP3545BLV	55L Blue bag with a Velcro fastening top, ideal for the storage & collection of newspapers & magazines, or other dry recyclables	350x350x450	2	1	-
PP4545G	90L Green bag, suitable for the storage & collection of garden waste or dry recyclables	450x450x450	2	1	-
PP4545BRV	90L Brown bag with Velcro fastening top, also used for the collection of green waste	450x450x450	2	1	-
PP4590BK	180L Black bag, which is seagull/vermin resistant due to its heavy duty fabric construction & Velcro fastening top	450x450x900	2	-	1
PP4590COL	180L White bag for the collection of polythene	450x450x900	2	-	1

Manufactured from a lighter weight fabric than our industrial quality Kerbie® bags, our multi-trip bags are ideal for the collection and storage of dry recyclables, especially in flats, where the contents may be decanted at a central collection point.



The slightly lighter, woven PP fabric is laminated and lends itself to high quality printing in up to eight colours similar to some carrier 'bags for life') and may easily be wiped clean – important for those bags which are stored inside the home for multiple re-use.



Compostable & Anaerobic Digestion

We supply a range of compostable caddy liners in all standard sizes that can support food waste management strategies. Manufactured from EcoPond® biodegradable plastic, using starch and lactide-based derivatives of plant sources, these products are fully compliant with the European composting standard, which requires more than 90% of the plastic mass to convert into biomass, CO₂ and water, with no harmful residue. Sacks fully decompose within the normal 6-10 week composting cycle and are accredited to meet the stringent composting standard EN13432.



Code	Description	Size (mm)	Size (inches)	Packing	MNBW
Compostable Liners					
COMP3640	5L	(200)x360x390	(8)x14x15	2000 pcs/carton (80 rolls x 25 pcs)	6.75
COMP4040	7L	(210)x390x400	(8)x15x16	2080 pcs/carton (40 rolls x 52 pcs)	7.80
COMP4545	10L	(240)x450x450	(9)x18x18	1040 pcs/carton (40 rolls x 26 pcs)	5.58
23096	10L Star-seal	(103)x420x420	(4)x17x17	1040 pcs/carton (20 rolls x 52 pcs)	4.41
COMP5060	25L	(300)x570x590	(12)x22x23	520 pcs/carton (20 rolls x 26 pcs)	5.60
22942	40L Star-seal	(170)x675x690	(7)x27x27	500 pcs/carton (20 rolls x 25 pcs)	7.46
COMP7285	80L	(182)x725x850	(7)x29x34	400 pcs/carton (40 rolls x 10 pcs)	8.88
22943	80L Star-seal	(205)x810x1040	(8)x32x41	200 pcs/carton (20 rolls x 10 pcs)	5.40
22944	120L Star-seal	(220)x860x1290	(9)x34x51	100 pcs/carton (10 rolls x 10 pcs)	4.00
COMP86106	140L	(508)x864x1067	(20)x34x42	200 pcs/carton (20 rolls x 10 pcs)	8.14
COMP112135	240L	(565)x1125x1400	(22)x45x55	100 pcs/carton (10 rolls x 10 pcs)	5.68
22945	240L Star-seal	(290)x1160x1400	(11)x46x55	100 pcs/carton (10 rolls x 10 pcs)	5.85

As food waste collections become ever more popular, we recognise the need to provide councils and waste management companies with alternatives to compostable bags, which can be conveniently removed with debagging equipment at the front end of AD plants.

Anaerobic Digestion (AD) Friendly Liners					
23099	10L Natural	(230)x450x450	(9)x18x18	1040 pcs/carton (20 rolls x 52 pcs)	4.97
23060	25L Natural	(295)x580x580	(12)x23x23	1040 pcs/carton (20 rolls x 52 pcs)	8.26
23056	40L Natural	(365)x675x690	(14)x27x27	500 pcs/carton (20 rolls x 25 pcs)	6.60
23057	80L Natural	(460)x810x1040	(18)x32x41	200 pcs/carton (20 rolls x 10 pcs)	4.77
23058	120L Natural	(440)x860x1290	(17)x34x51	150 pcs/carton (15 rolls x 10 pcs)	4.72
23059	240L Natural	(310)x1160x1400	(12)x46x55	100 pcs/carton (10 rolls x 10 pcs)	4.60





Compostable vs. Biodegradable

What is the difference?



**Not all biodegradable plastics are compostable.
But all compostable plastics are biodegradable.**

Our Ecopond products are made from 100% compostable materials and bioplastics, which can be broken down and metabolised by microorganisms such as bacteria and fungi.

For packaging, the definition of compostable plastic is governed by UK and European standard BS EN13432, which ensures that the composting process is completed within acceptable parameters. These parameters ensure that the products being tested can be converted into water, CO₂, and biomass under normal composting conditions and at a rate comparable to that of cellulose.

Oxo-degradable (sometimes referred to as oxo-biodegradable) is often mis-sold as biodegradable. Oxo-degradable bags are made using traditional plastic films which carry a degradable additive. These additives are designed to break down in the presence of oxygen and cause the plastic surrounding them to fragment into imperceptibly small pieces, giving the illusion that they have biodegraded.

The controversial nature of oxo-degradable products has resulted in bans in several countries because they contribute to microplastics pollution and can undermine plastics recycling efforts if they end up contaminating legitimate waste streams.

At Cromwell Polythene

✓	✗
<p>We do sell Compostable</p> <ul style="list-style-type: none"> Made from fully compostable bioplastics Breaks down into water, CO₂, and biomass EN13432 compliant 	<p>We do not sell Oxo-degradable</p> <ul style="list-style-type: none"> Made from non-compostable plastics with degradable additives Degrades into microplastics Does not comply with EN13432

And of course, there's always traditional fossil-based* polythene...

From an environmental standpoint, fossil-based plastics such as polythene are still environmentally sound choices, being fully recyclable (providing it is not contaminated with oxo-degradable additive), it is easily recycled into second life products like our waste and recycling sacks (saving 1.4T CO₂ emissions for every 1 tonne recycled).

*All plastics used represent less than 4% of oil extracted





Disposables



Our Wave® range of disposable gloves, aprons, and water-soluble laundry bags have a new logo and redesigned eye catching packaging. The gloves are suitable for most cleaning applications and are food safe, which means they are highly effective for sanitising requirements within food contact areas. The quality, disposable gloves are both latex and powder free, helping to minimise the occurrence of skin irritation. They provide the comfort and performance attributes of latex, but are more cost effective and without the allergy issues with which the material is often associated.

Code	Description	Size (mm)	Packing
Wave Synthetic Examination Gloves			
GSPFS	Small	85x240	1000 pcs/carton (10 packs x 100 pcs)
GSPFM	Medium	95x240	1000 pcs/carton (10 packs x 100 pcs)
GSPFL	Large	105x240	1000 pcs/carton (10 packs x 100 pcs)
GSPFXL	X Large	115x240	1000 pcs/carton (10 packs x 100 pcs)
Wave Blue Nitrile Examination Gloves			
GNPFS	Small	85x240	1000 pcs/carton (10 packs x 100 pcs)
GNPFM	Medium	95x240	1000 pcs/carton (10 packs x 100 pcs)
GNPFL	Large	105x240	1000 pcs/carton (10 packs x 100 pcs)
GNPFXL	X Large	115x240	1000 pcs/carton (10 packs x 100 pcs)
Wave Vinyl General Purpose Gloves			
GVPFS	Small	85x240	1000 pcs/carton (10 packs x 100 pcs)
GVPFM	Medium	95x240	1000 pcs/carton (10 packs x 100 pcs)
GVPFL	Large	105x240	1000 pcs/carton (10 packs x 100 pcs)
GVPFXL	X Large	115x240	1000 pcs/carton (10 packs x 100 pcs)



Our Wave® Aprons are available in blue and white, either in poly-packs or on rolls of 100 pieces for easy dispensing.

Wave Aprons					
AP274211BL	Blue Aprons	685x1060	27x42	1000 pcs/carton (10 dispenser packs x 100 pcs)	4.30
AP274211BLR	Blue Aprons	685x1060	27x42	1000 pcs/carton (5 rolls x 200 pcs)	4.30
AP274211W	White Aprons	685x1060	27x42	1000 pcs/carton (10 dispenser packs x 100 pcs)	4.30
AP274211WR	White Aprons	685x1060	27x42	1000 pcs/carton (5 rolls x 200 pcs)	4.30

Wave® water-soluble strip laundry bags are available in two sizes. Hygienic and cost-effective, for the safe containment of soiled linen. The bags incorporate a water soluble seal running the length of the bag and a tie string for securing the bags when full. The strip and tie dissolve in the wash cycle (hot or cold) allowing the contents to discharge into the wash. The bag itself is taken out with the wash and can be recycled.

Wave Water-soluble Strip Laundry Bags						
WS26R	35L Red	450x635x650	18x24x26	200 pcs/carton (4 folds x 50 pcs)	1.30	
WS30R	50L Red	450x700x710	18x28x28	200 pcs/carton (4 folds x 50 pcs)	2.00	
WS33N	60L Fully Water-soluble Natural	457x660x840	18x26x33	100 pcs/carton (4 rolls x 25 pcs)	1.75	





Clinical Waste

Cromwell Polythene is a major supplier of waste management solutions to the healthcare sector and an active member of the Sanitary Medical Disposal Services Association (SMDSA). We offer a full range of sacks for clinical waste management, from ultra-strong sacks with very high tear resistance to economically priced sacks with a high recycled content.

Our range includes tiger stripe sacks for deep landfill of offensive/hygiene waste, yellow sacks certified to UN standards for incineration of hazardous waste and orange UN standard sacks for alternative treatment of infectious and potentially infectious waste at a licensed or permitted facility.

Code	Description	Size (mm)	Size (inches)	Packing	MNBW
Clinical Waste Sacks - Incineration					
YLUN5PR/SAN	20L 5kg UN NHS	(279)x432x660	(11)x17x26	500 pcs/carton (10 rolls x 50 pcs)	5.44
YLUN8/39	80L 8kg UN	(361)x711x990	(14)x28x39	200 pcs/carton (8 rolls x 25 pcs)	4.88
YLUN39/11	90L 11kg UN	(361)x711x990	(14)x28x39	200 pcs/carton (10 rolls x 20 pcs)	11.08

Clinical Waste Sacks - Alternative Treatment					
ORUN5PR/SAN	20L 5kg UN NHS	(22)x425x650	(9)x17x26	500 pcs/carton (10 rolls x 50 pcs)	5.44
ORUN5/34	70L 5kg UN	(361)x711x850	(14)x28x33	200 pcs/carton (8 rolls x 25 pcs)	3.43
ORUN8/39	80L 8kg UN	(361)x711x990	(14)x28x39	200 pcs/carton (8 rolls x 25 pcs)	4.88
ORUN39/11	80L 11kg UN	(361)x711x990	(14)x28x39	200 pcs/carton (10 rolls x 20 pcs)	11.08
MVN492	70L 8kg UN NHS	(360)x711x990	(14)x28x39	250 pcs/carton (10 rolls x 25 pcs)	5.82
MVN493	80L 10kg UN NHS	711x980	28x39	150 pcs/carton (6 rolls x 25 pcs)	6.58

Clinical Waste Sacks - Landfill					
YL2934L	80L 10kg CHSA Tiger Stripe	(380)x737x850	(15)x29x33	400 pcs/carton (16 rolls x 25 pcs)	5.52
YL2939L	80L 10kg CHSA Tiger Stripe	(450)x737x991	(18)x29x39	400 pcs/carton (16 rolls x 25 pcs)	6.44
YL2936L1R	80L Tiger Stripe	(380)x740x915	(15)x29x36	200 pcs/carton (8 rolls x 25 pcs)	7.89
MVF033	80L Natural	(380)x735x920	(15)x29x36	400 pcs/carton (8 rolls x 50 pcs)	9.37
MVN459	25L NHS Household	(355)x559x635	(14)x22x25	500 pcs/carton (10 rolls x 50 pcs)	6.43
MVN460	80L NHS Household	(360)x711x980	(14)x28x39	300 pcs/carton (6 rolls x 50 pcs)	7.57

SANSAFE.TIG	75L 10kg CHSA Antimicrobial Tiger Stripe Lemon Scent	737x915	29x36	500 pcs/carton (20 rolls x 25 pcs)	7.43
-------------	--	---------	-------	------------------------------------	------





Building & Construction

Among our products we have a range of particular relevance to the building and construction sector. Our rubble sacks are robust and ideal for different types of hard core and rubble, or simply as extra heavy duty refuse sacks.



Code	Description	Size (mm)	Size (inches)	Packing	MNBW
Rubble Sacks - Non Gusseted					
BK2030	40L Black	508x762	20x30	100 pcs/carton (4 folds x 25 pcs)	4.57
SN2030	40L Natural	500x750	20x30	200 pcs/carton (4 dispenser x 50 pcs)	10.63
NAT2030	40L Natural	508x762	20x30	100 pcs/carton (4 folds x 25 pcs)	6.40
BK2232	50L Black	559x813	22x32	100 pcs/carton (4 folds x 25 pcs)	6.80
BL2234	55L Blue	559x864	22x34	100 pcs/carton (4 folds x 25 pcs)	7.60
BK2436	60L Black	610x914	24x36	100 pcs/carton (4 folds x 25 pcs)	8.34
NAT2436/5	60L Natural	600x900	24x36	100 pcs/carton (4 folds x 25 pcs)	10.20
BK28423S	100L Black	711x1067	28x42	100 pcs/carton (4 folds x 25 pcs)	8.96

We supply two types of heavy duty asbestos sack – the UN 3325 accredited red sack and the UN 3323 accredited clear outer sack. Supplied separately, both sacks are packed in boxes of 100.

All asbestos waste must be double-bagged, using a UN approved red bag with a CDG hazard sign and asbestos code information clearly visible as the primary sack. Once securely sealed, the red sack is placed into a slightly larger clear bag before being sealed again.



Heavy Duty Asbestos Sacks - Non Gusseted					
NA2436A	60L Natural	600x914	24x36	100 pcs/carton (4 folds x 25 pcs)	6.91
RD2436A	60L Red	600x914	24x36	100 pcs/carton (4 folds x 25 pcs)	6.91
NA3648A	140L Natural	902x1168	36x46	100 pcs/carton (4 folds x 25 pcs)	10.37
RD3648A	140L Red	876x1143	34x45	100 pcs/carton (4 folds x 25 pcs)	10.14

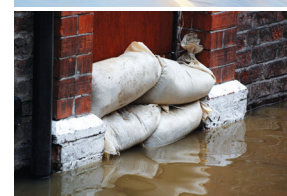
Additional Products

Temporary Protective Sheeting (TPS) for general protection use

Polythene Damp Proof Membrane (DPM) for use in concrete floor construction

Heavy Duty Sandbags

Sandbags are part of a range of heavy duty, reusable sacks, made from circular woven polypropylene, with top hem and stitched bottom, suitable for a variety of uses where heavy duty, scuff-resistant and/or re-usability is required, e.g. re-usable confidential waste sacks, construction materials, food ingredients, grain and feed sacks.





The Cleaning and Hygiene Suppliers Association

We are proud members of the Cleaning and Hygiene Suppliers Association, whose codes of practice provides customers with an assurance of professional conduct, customer service and quality.

We are founding members of the Cleaning & Hygiene Suppliers Association (CHSA) Accreditation Scheme for Plastic Refuse Sacks. Our Sales Director is also a council member of the CHSA and has been since 2009.

The CHSA represents all the major manufacturers and distributors, from global multinationals and national networks to privately owned independent businesses. The organisation gives businesses like ours a powerful collective voice and keeps them informed and connected through events, seminars and newsletters. We are always keen to get involved within these events and other marketing promotions.

Gaining admittance to one of the CHSA's Accreditation Schemes is challenging. Applicants must pass the initial audit of their product range and existing quality assurance processes conducted by the CHSA's Independent Inspector. They are then audited frequently throughout the first year to ensure they maintain the standard required of them to maintain Scheme Membership.

Labels feature key dimensional information such as length, width, minimum net weight and the number of sacks in the pack, while a "fit for purpose" scale, which differentiates between light, medium, heavy and extra heavy duty sacks, helps users purchase the most appropriate product for their needs.

Sacks are regularly tested using the procedure set out in British Standard 6642 to ensure they will not burst with the loads set out in the standard.

Thereafter members are visited by the Independent Inspector repeatedly through each year, who selects products from both the warehouse and production line for inspection, ensuring the standard is maintained.

