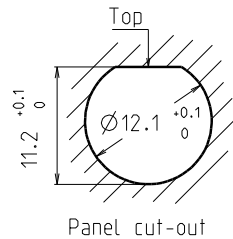
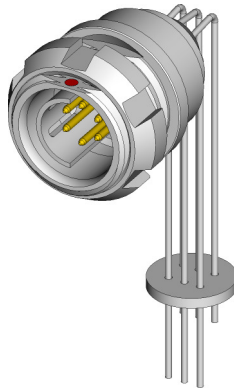
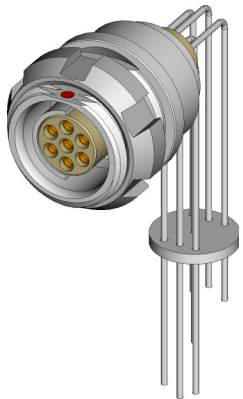


DBPC 103 Multipole Receptacles

Contact polarity A

Contact polarity Z

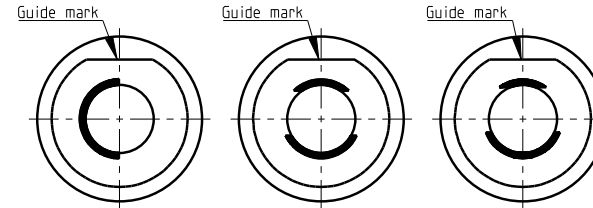


Keying codes (View from F)

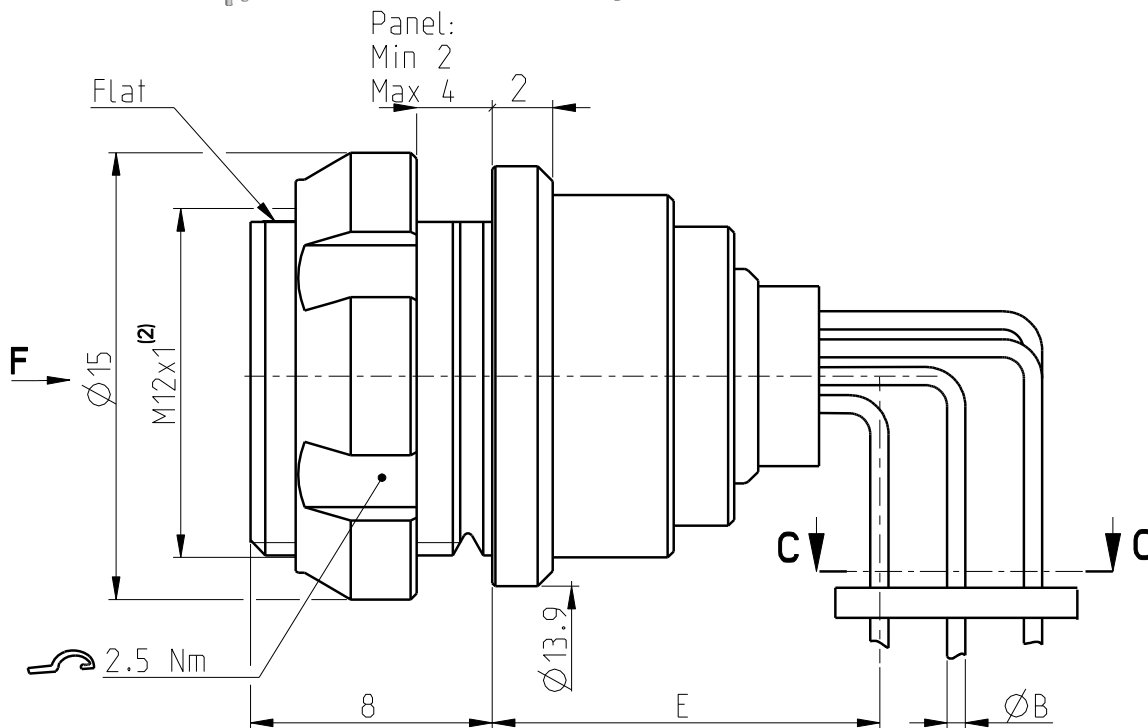
Code 1
(-1x0)

Code 2
(-2x0)

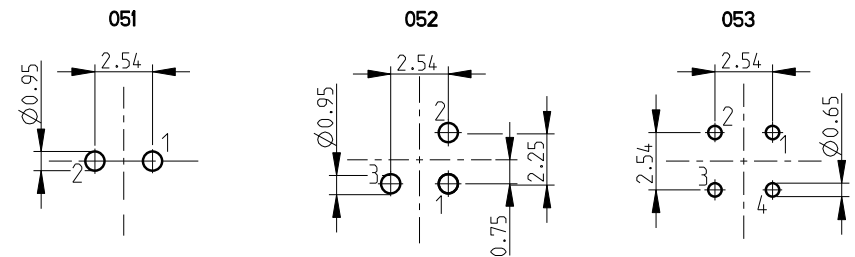
Code 3
(-3x0)



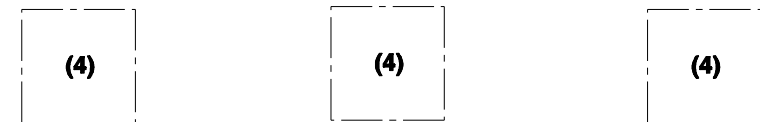
CONTACT CONFIGURATION		Contacts	E	∅B	
103	A Z	051	2	14	0.8
103	A Z	052	3	14	0.8
103	A Z	053	4	12.3	0.5



Pin layout / PCB hole pattern for polarities A - View from C ⁽³⁾



Polarities Z - View from C ⁽³⁾



All dimensions in mm

Rev.

Pages

Notes :

- 1) All tolerances resulting from connector assembly are typically $\pm 0.3\text{mm}$
- 2) If receptacle is screwed directly into threaded hole, oversize thread by $+0.05\text{mm}$

3) Recommended PCB hole dimensions may be adjusted to application

4) Please contact us.

Part number example : DBPC 103 A053-130

600516

2a

1/3

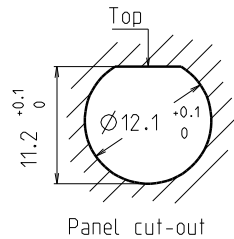
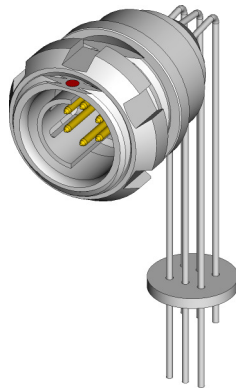
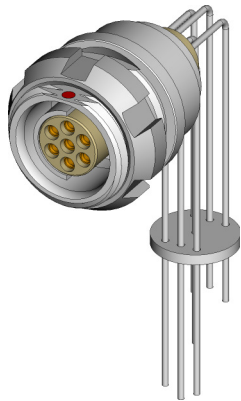
fischer
CONNECTORS

www.fischerconnectors.com

DBPC 103 Multipole Receptacles

Contact polarity A

Contact polarity Z

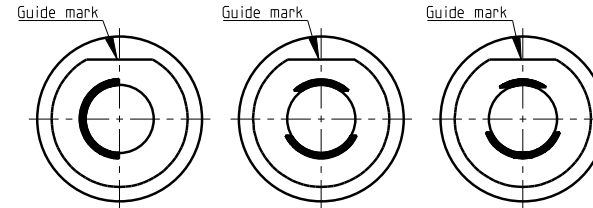


Keying codes (View from F)

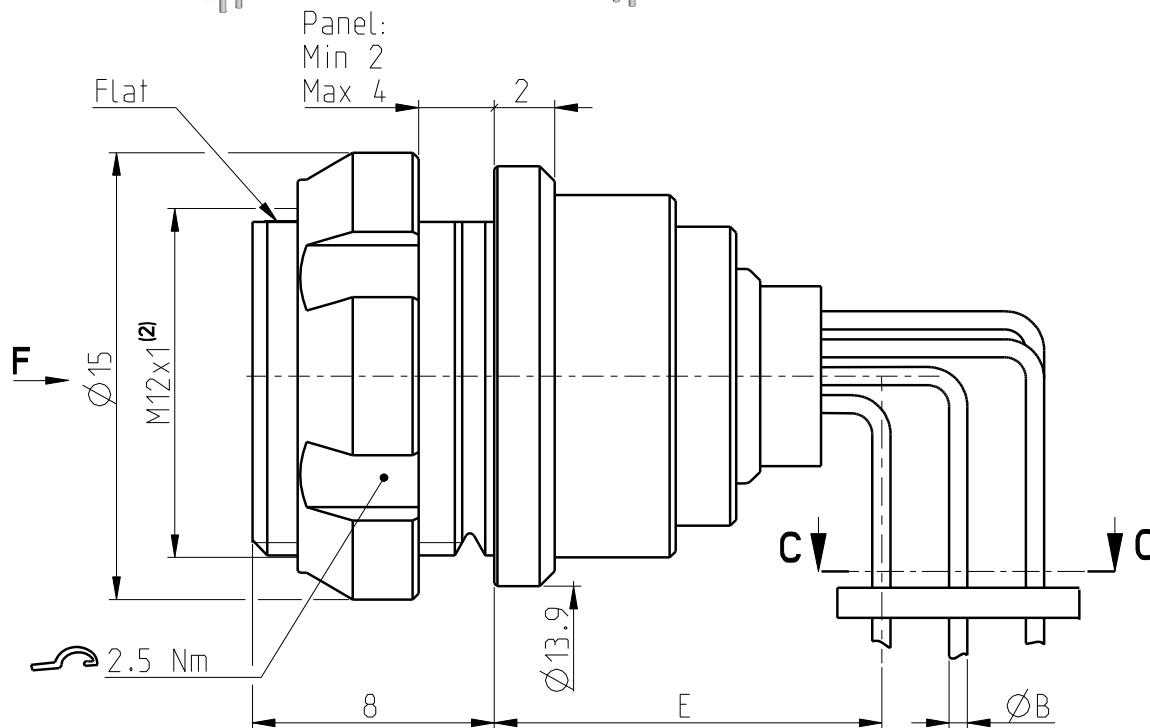
Code 1
(-1x0)

Code 2
(-2x0)

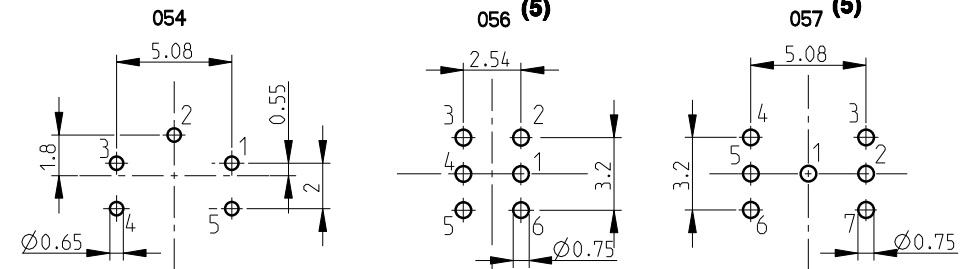
Code 3
(-3x0)



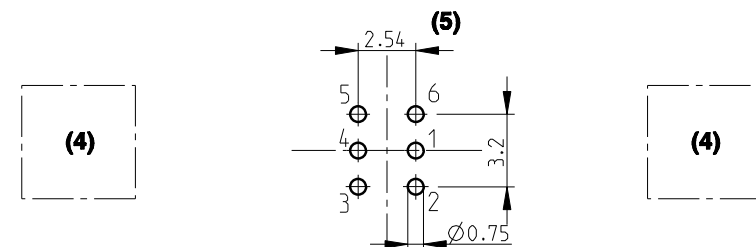
CONTACT CONFIGURATION		Contacts	E	∅B	
103	A Z	054	5	12.8	0.5
103	A Z	056	6	12.8	0.6
103	A Z	057	7	12.8	0.6



Pin layout / PCB hole pattern for polarities A - View from C (3)



Polarities Z - View from C (3)



All dimensions in mm

Rev. Pages

Notes :

- 1) All tolerances resulting from connector assembly are typically $\pm 0.3\text{mm}$
- 2) If receptacle is screwed directly into threaded hole, oversize thread by $+0.05\text{mm}$

3) Recommended PCB hole dimensions may be adjusted to application

4) Please contact us.

5) Only valid for Code 1. For other codes please contact us.

Part number example : DBPC 103 A057-130

600516

2a

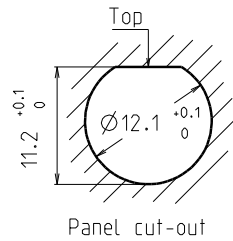
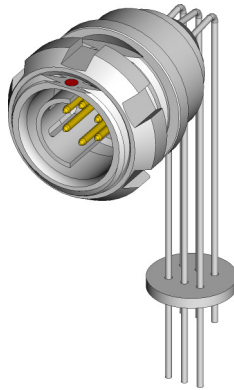
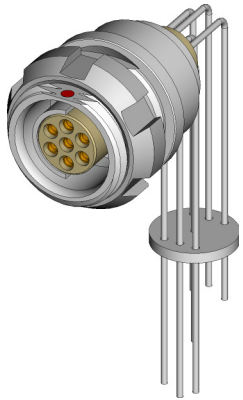
2/3

fischer
CONNECTORS

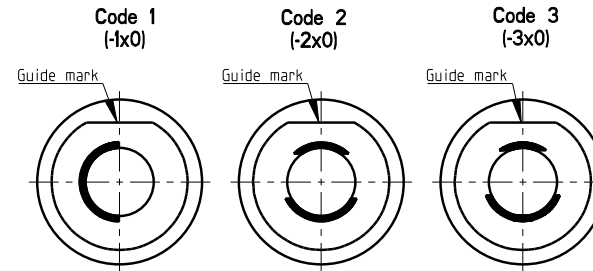
DBPC 103 Multipole Receptacles

Contact polarity A

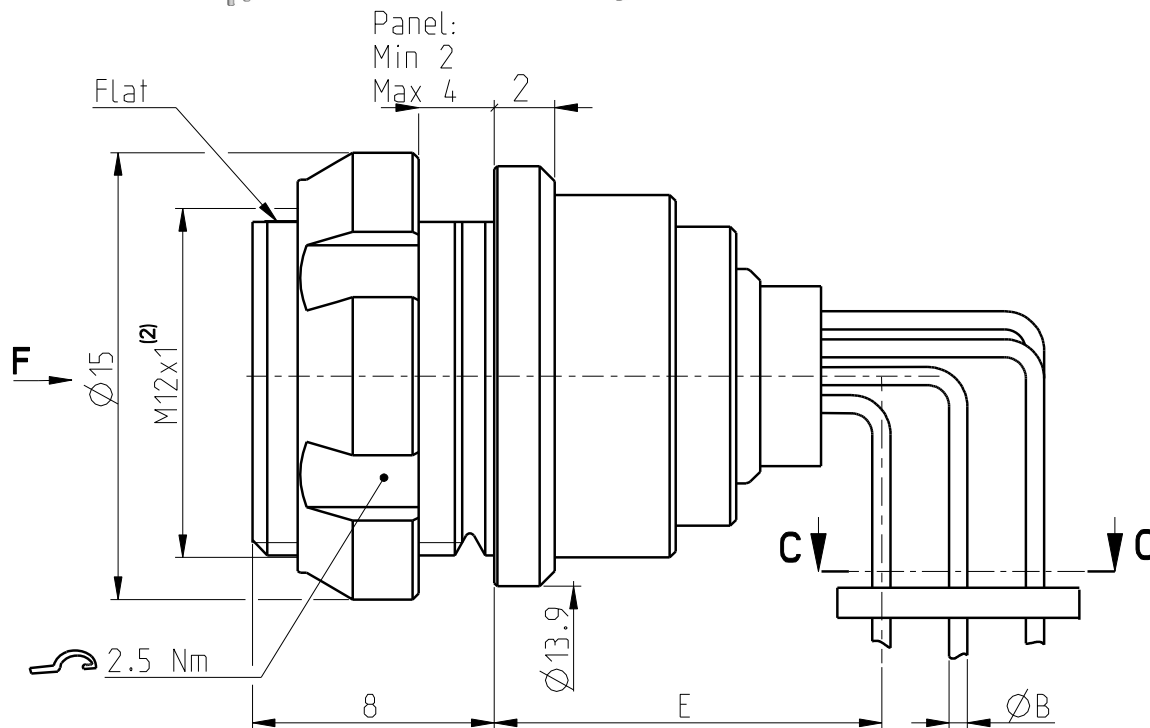
Contact polarity Z



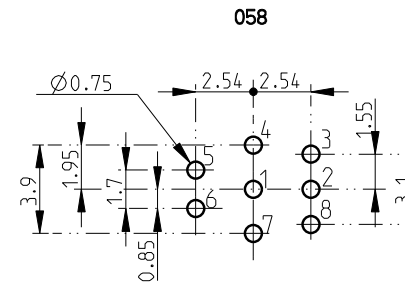
Keying codes (View from F)



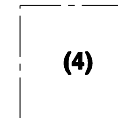
CONTACT CONFIGURATION	Contacts	E	∅B
103 A	8	12.8	0.6
Z			
058			



Pin layout / PCB hole pattern for polarities A - View from C ⁽³⁾



Polarities Z - View from C ⁽³⁾



All dimensions in mm

600516

Rev.

2a

Pages

3/3

Notes :

- 1) All tolerances resulting from connector assembly are typically $\pm 0.3\text{mm}$
- 2) If receptacle is screwed directly into threaded hole, oversize thread by $+0.05\text{mm}$

3) Recommended PCB hole dimensions may be adjusted to application

4) Please contact us.

Part number example : DBPC 103 A053-130

fischer
CONNECTORS

www.fischerconnectors.com