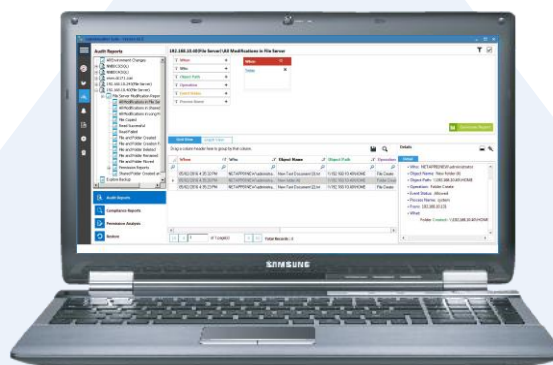


Lepide Auditor for File Server gives organisations the ability to instantly see ‘who, what, where and when’ files and folders are created, accessed, modified, COPIED or deleted at the click of a button. It also allows users to easily track and compare permissions across their data. This solution is specifically designed to work on Windows File Server and NetApp Filers, with more platforms soon to be added. It is available standalone or as a part our comprehensive LepideAuditor and 2020 Suite.



File Server



Key Features

- ❑ Audits both Windows File Servers and NetApp filers through our integration with the Fpolicy framework and the assigned file policy
- ❑ Tracks changes with a single log for a single change displaying simply who, what, where and when the changes are made
- ❑ Reports on all attempts of file or folder creation, deletion, copy or modification in any way
- ❑ Provides a wide range of detailed reports that directly map to the common requirements of compliance standards such as PCI, SOX, HIPAA, ISO and GLBA
- ❑ Provides before and after values to truly understand the purpose of the event and enable IT teams to identify issues faster
- ❑ Accurately shows file copy events – one of the only solutions on the market to do so
- ❑ Gives real time alerts on file or folder change events delivered either via the console, direct to your inbox or via SMS
- ❑ Shows historic permissions, compares permissions between two dates, runs detailed permission change reports on files and folders and analyse the current effective permissions on your shared files/folders

Awards



Basic System Requirements

- .NET Framework 4.0 or later
- Dual Core Processor or higher
- Recommended RAM: 8 GB
- Required free disk space:
 - Minimum 1 GB
 - Recommended 2 GB

Prerequisites

Following are the prerequisites to audit Windows Server 2003 and Windows Server 2003 R2 (both 32-bit and 64-bit versions)

- .NET Framework 2.0
- Windows PowerShell 2.0
- GPMC.MSC
- Hotfix of <http://support2.microsoft.com/hotfix/KBHotfix.aspx?kbnum=941084&kbln=en-us> for Windows Server 2003

Supported Windows OS

Any of the following 32 bit or 64 bit Windows Operating Systems:

Windows 7 / Windows 8.1 / 8 / 10 / Windows Server 2003 / Windows Server 2003 R2 / Windows Server 2008 / Windows Server 2008 R2 / Windows Server 2012 / Windows Server 2012 R2

SQL Server for storing log files

Any of the following SQL Servers (local or network hosted) for storing auditing logs:

SQL Server 2005 / SQL Server 2008 / SQL Server 2008 R2 / SQL Server 2012 / SQL Server 2014 / SQL Server 2016 / SQL Server 2005 Express Edition / SQL Server 2008 Express / SQL Server 2008 R2 Express / SQL Server 2012 Express / SQL Server 2014 Express



Contact Details

Product Experts



USA/Canada: +1-800-814-0578
UK/Europe: +44 (0)-845-594-3766
Rest of the World: +91 (0)-991-004-9028



sales@lepide.com

Technical Gurus

USA/Canada: +1-800-814-0578
UK/Europe: +44 (0)-800-088-5478
Rest of the World: +91 (0)-991-085-4291

support@lepide.com