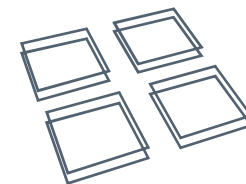




higher & further education portfolio

studio four architects ltd
www.studiofourarchitects.com



ROMSEY

WINCHESTER

SOUTHAMPTON

our work



atrium
university of winchester



wind tunnel
university of southampton



refectory
highbury college



lakeside school
hampshire



DOHaD
university of southampton



learning cafe
university of winchester



barton peveril college
eastleigh



archaeology store
university of winchester



sparsholt college reception
sparsholt college, winchester



lecture rooms
winchester school of art



portland building
university of portsmouth



sainsbury building
sparsholt college

practice profile

Studio Four Architects is a medium sized architectural practice based in Hampshire. With offices in Romsey and Winchester and a staff of over 40 we can provide a reliable and well resourced service. We listen to our clients and provide solutions which meet budget and operational needs with design flair. We foster relationships of co-operation with all members of the design and construction team. We respond quickly and provide staff who are knowledgeable and confident in dealing with design and detail issues.

We are proud that the majority of our work is from our Clients returning again and again, showing the high level of satisfaction and good working relationships we strive to achieve. Studio Four Architects was founded in 1992 in Romsey by George Rankin and Nick Lockyer, with Mike Brownlow joining in 1993. The practice has steadily expanded its base and workload and now enjoys a wide variety of projects. Alongside significant healthcare experience, we have completed many projects in other sectors including education, housing, leisure, retail/commercial, church and community-based schemes. The Winchester office was opened in 1997 to serve a growing number of clients in the Winchester area. Both offices work together to share resources, expertise and training opportunities.

In 2012, Studio Four Specialist Projects was formed to provide services focussed around conservation, specialist architectural projects and building surveying.

In 2013 the practice merged with Chris Edmond Associates, architects and interior designers, based in central Southampton. Chris Edmond Associates has provided Architect's services for over 30 years to clients in Southampton and the surrounding counties. These have included developers, housing associations, local authorities, private businesses and householder clients. Whilst specialising in the residential market with projects ranging from inner city apartments to bespoke high quality houses, the practice also works with urban renewal projects, listed buildings and has designed a number of community buildings including yacht clubs, golf clubs and commercial start-up units.

A wide range of architectural services are provided for all project stages, including:

- Planning opportunities and feasibility studies
- Brief preparation
- Full architectural duties
- Design team leadership
- Principal Designer duties
- Design & Build co-ordination
- Site inspection
- Interior design
- Maintenance advice
- Physical models and 3D modelling
- Measured surveys
- dilapidation and/or condition surveys
- Party Wall matters
- Listed Building Refurbishment & Development



Atrium, University of Winchester

The University of Winchester appointed Studio Four Architects to carry out a feasibility study for enclosing an existing courtyard to create a new Senior Common Room.

The space needed to be flexible, for possible alternative uses, and spectacular, to create a prominent feature at the centre of the original 19C buildings.

Various design proposals were presented to the University and a 2-storey lightweight structure, supporting a flat roof with unusual "prism" rooflights for daylight and ventilation, was selected.

The Atrium has full-height glazing looking out into a re-landscaped courtyard. The unique light "spikes" in the roof reach up to catch low sunlight and transfer it to tapered prisms in the ceiling. At night, the process is reversed and LED lights illuminate the prisms and spikes with colour-changing light from within. In addition, the gap between spike and prism allows stale air in the room to be vented automatically.

PROJECT VALUE: £920,000

STAGE: COMPLETED



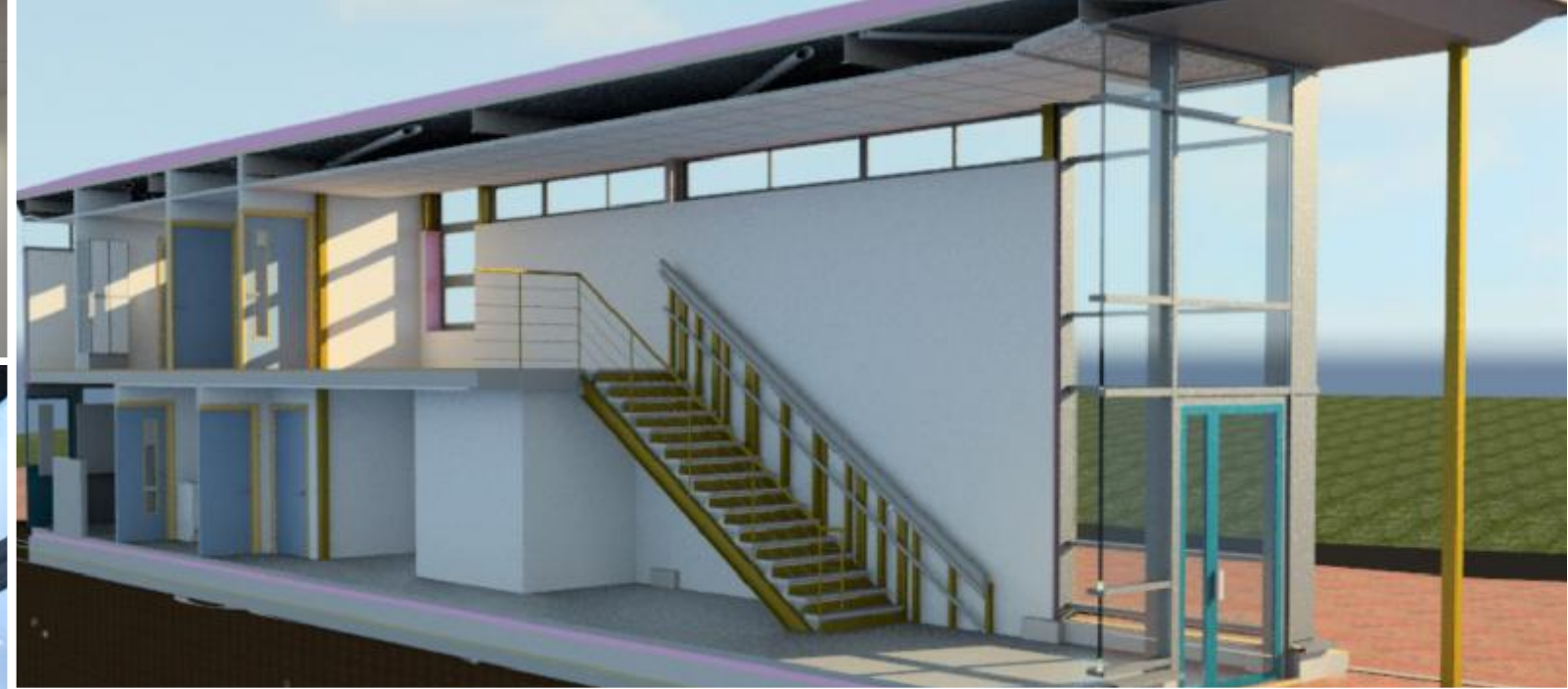
Wind Tunnel, University of Southampton

The wind tunnel at the University of Southampton is used by many outside individuals and organisations, as well as the students themselves. The majority of the athletes winning gold medals in the Beijing Olympics had used the wind tunnel for refining their equipment and posture. Unfortunately, the tunnel is housed in an industrial shed and it is accessed through a maze of corridors.

We were approached to design a new entrance which would raise the profile of the building, create a viewing gallery onto the running bed and providing more appropriate changing facilities, all within the width of the footpath. We have designed a simple steel framed box with curtain wall and aluminium rainscreen cladding. A two storey reception space will allow for past models to be hung from the ceiling. Also on the ground floor there is a toilet, kitchenette and office. Upstairs leads in to the wind tunnel building and the viewing gallery, with a parallel entrance for athletes from the changing and shower rooms.

The project completed on site in October 2013

PROJECT VALUE: £450,000
STAGE: COMPLETED



Refectory, Highbury College

Highbury College did not have a sixth form common room. 'A' levels were a relatively small percentage of the College teaching and learning provision, however, this is an area of the College that is growing fast and it is being targeted for future growth.

The proposed development provides the additional space required, as well as a separate functional area which can be isolated from the existing refectory creating a more versatile space. The project comprises two separate single-storey extensions: one to the refectory and the other to the recreation room. In design and appearance terms the proposals aim to mirror the look of the existing surrounding buildings. The layouts of the extensions seek to provide a secure and private centre for future students, which promote the inclusion of both indoor and outdoor communal spaces.

PROJECT VALUE: £460,000

STAGE: COMPLETED



Lakeside School, Hampshire

Lakeside is one of only a few schools in Hampshire to provide education for EBD pupils, and is the only school to provide residential boarding accommodation as well.

The existing buildings, dating from the 1970's, are arranged around a central play-court which provides a natural means of control, but creates an insular environment, compounded by a somewhat aggressive architectural style.

This project provides additional teaching spaces, upgrades residential accommodation and opens up views from the inner courtyard out onto the playing fields to the southeast. Redundant boarding houses were demolished to create space for a new classroom block, which seeks to introduce a softer aesthetic whilst still observing a need for robustness.

Extensive phasing of the project resulted in some internal alterations and an emergency access road being constructed in Summer 2004, with two subsequent phases over the following eighteen months.

The completed scheme has significantly improved the school environment, which it is believed should have a consequent impact on pupil behaviour.

PROJECT VALUE: £2.2 MILLION
STAGE: COMPLETED



DOHaD, Southampton General Hospital

This Hospital Campus project follows on from the success of the Somer Cancer Sciences Building. The Developmental Origins of Health and Disease building (DOHaD) is to carry out research to find out how early life influences the risk of later disease, to find new markers of early risk and to pioneer new interventions.

Repeating the existing building form and creating a new "knuckle" joint to connect them is setting a theme for future phases on the site. The building sits facing out onto the new entrance piazza, looking across to the new North Block.

Studio Four worked very closely with the different users to create an internal layout suitable for their research's particular needs, varying from the existing, taking into account the changes in legislation that have occurred even in such a small time. With the Duthie building behind the "knuckle" provides access for all three departments, and the complex is now known as the Institute of Developmental Sciences (IDS). Above reception there are comfortable breakout areas for staff to discuss work and student workstations, with labs, offices and lecture theatres.

PROJECT VALUE: £6.2 MILLION
STAGE: COMPLETED



Learning Café, University of Winchester

The scheme was conceived from the University of Winchester's need for social learning spaces. The University's brief was to provide a learning space for 80 fixed workstations, with café areas for dining, study and socialising.

The existing original Chapel building structure was retained and significantly upgraded. The overall forms remain unchanged with two extensions to the rear providing service areas; whilst significant structural repair, insulation and re-roofing work was carried out to the unusual t&g boarded hyperbolic paraboloid roof structure.

The servery sits within the main space, whilst the extensions enclose WCs to the north-east and storage / food preparation to the north-west. The front (south) elevation was significantly opened up to provide a large expanse of glazing, allowing views out over the campus and filling the overall area with light. A new deck allows activities to spill outside in warm weather

PROJECT VALUE: £510,000

STAGE: COMPLETED

photographs by studio four architects ltd & Harry Goldenfeld



Barton Peveril College, Eastleigh

A Design & Build contract with Dean & Dyball, Studio Four developed the design and production drawing package during the construction phase.

The project consisted of a new two storey 22 classroom block, a new administration wing, a two storey glazed infill, a new extension and remodelling of the student's social area and old administration area, the remodelling of the old first floor canteen to an IT resource area with fire escape, and two new separate lifts to improve accessibility. Although supplied with a design at tender stage, Client changes and Building Regulations required further design input.

The College now have a new suite of administration, with the campus entrance moved from the North through a housing estate, to the South straight off the main road; generous new classrooms and an enlarged, light and airy social area with improved catering and full width glazing out onto the re-landscaped courtyard completes the project.

PROJECT VALUE: £2.7 MILLION

STAGE: COMPLETED



Archaeology Store, University of Winchester

The University of Winchester's Archaeology Department required bespoke secure storage facilities for archaeological artefacts, in line with the Institute for Archaeologists' guidelines, as well as indoor Washdown, Processing and "Finds" Analysis areas for site samples from archaeological digs. Secure storage for surveying and field equipment was also needed.

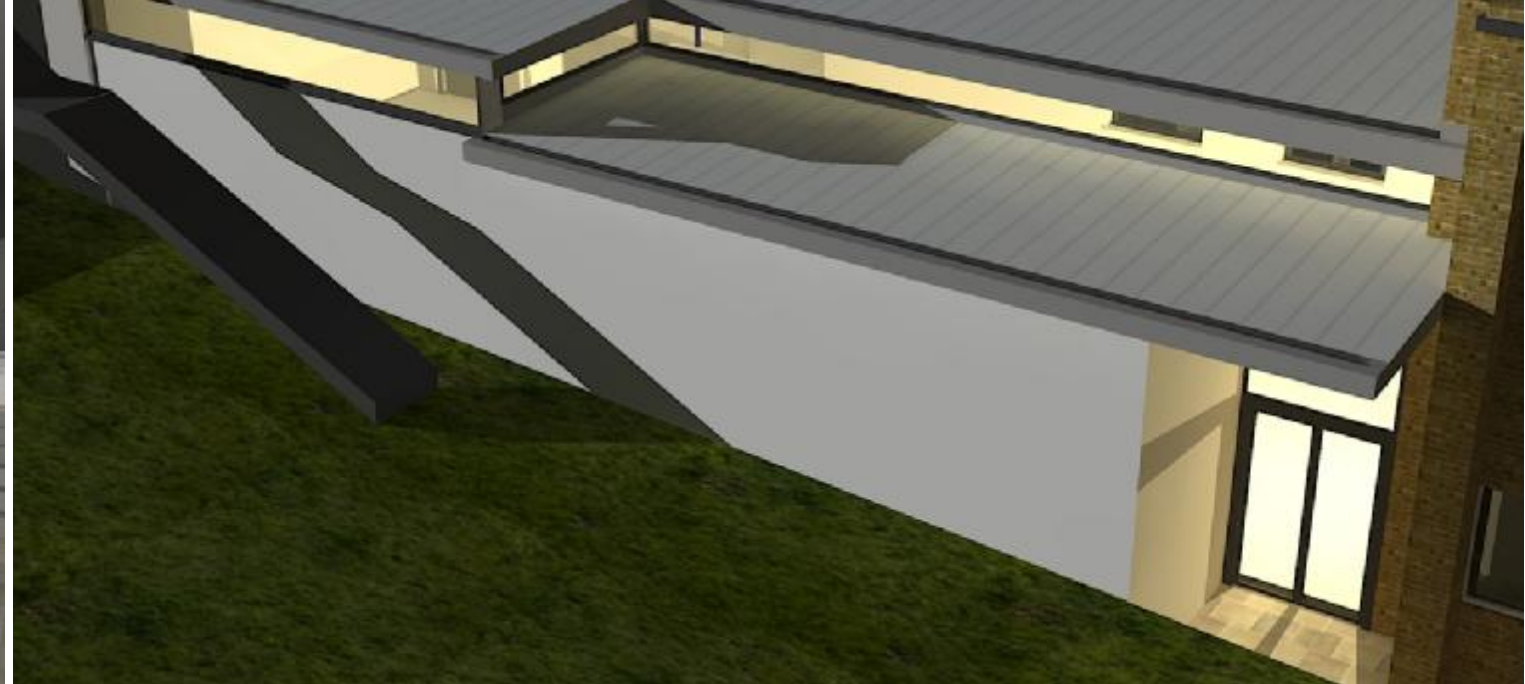
The Medecroft building itself also lacked disabled access to various ground floor split levels and upper floor teaching rooms, so a new lift was an essential feature. The proposed site was a courtyard, with dilapidated outbuildings, to the rear of the building.

Studio Four designed a new single-storey courtyard infill, with different floor levels for different activities, to link all the existing split levels. A platform lift allows disabled access to the artefact storage area for research and teaching, as well as upper floors, whilst the lower levels link directly outside to allow soil samples to be brought in from excavations. The extension has white rendered elevations to match the existing building, with standing seam insulated metal roof and clerestory glazing at high level for controlled natural daylight.

The original external windows into the courtyard have been retained, allowing views into the functions of the new laboratories from the surrounding corridors.

PROJECT VALUE: £200,000

STAGE: COMPLETED



Sparsholt College Reception, Sparsholt College

Following the results of a D.D.A Audit, the College issued a competitive fee tender for the relevant architectural duties to carry out various improvements around the campus.

Studio Four were appointed to prepare feasibility schemes to address the shortfalls highlighted in the audit, particularly the original college 'main building' and the 'ICT centre' teaching block.

The main building works include the opportunity to replace the existing college reception with a new extension housing reception desk, a lift and waiting area. A new reception office, waiting area and accessible WC's, were created within the existing building to complement the new facilities. In addition various other internal improvements were carried out.

PROJECT VALUE: £1.5 MILLION
STAGE: COMPLETED



Lecture Rooms, Winchester School of Art

The University of Southampton commissioned Studio Four Architects to develop proposals to convert a former seminar room on the west side of Winchester School of Art into three smaller seminar rooms for between 24 to 30 people each.

The design proposal consisted of stripping out the old seminar room and reconfiguring the space with three new smaller seminar rooms with improved ventilation, lighting, acoustics and IT. A small "interview" room was also included and all rooms were linked by a corridor with new fire exit doors. Each seminar room has the latest audio visual equipment.

On the east side, we developed proposals to fit out another room into a "Harvard" style seminar room. The design proposal for this new room included two rows of tiered "horse shoe" format seating for 34 people, as well as improved mechanical ventilation, heating, lighting, acoustics, IT and the latest audio visual equipment. The corridor is used for "meet and greet" and incorporates a beverage area and easy seating.

The refurbishment was completed in August 2014.

PROJECT VALUE: £372,000

STAGE: COMPLETED



Portland Building, University of Portsmouth

The University required a complete refurbishment of this iconic 1990s building, designed by Sir Colin Stansfield-Smith and his team at Hampshire County Council and former home of the School of Architecture.

Studio Four acted as Lead Consultants and prepared initial feasibility proposals for the University, including the idea of creating more internal floor area by removing redundant internal stairs and voids, and creating new full-height glazed enclosures to the existing entrance porticos that suffered from pigeon and seagull nesting and increased heat loss from the building.

The building required re-modelling to accommodate Business School, School of Civil Engineering and Surveying, and Information Services. The café also required expansion, and an external under-utilised courtyard was brought into use with new canopies and a resurfacing.

Works included new raised floor structure throughout, new suspended ceilings, new plant and services throughout for energy-saving purposes, new IT systems, new furniture, new teaching aids, new access systems and complete external re-decoration. New flat roof finishes, structural repairs and new insulation were also carried out.

PROJECT VALUE: £9 MILLION overall project value
STAGE: COMPLETED



Sainsbury Building, Sparsholt College

The College wished to replace all their temporary teaching accommodation with a single teaching block of 1800m² including Laboratory and Lecture Teaching facilities.

Studio Four won the commission to design the building up to planning stage and were subsequently novated to work with the contractor to complete the working drawing package.

The building includes 16 classrooms, 3 laboratories and a lecture theatre, arranged around a central corridor which follows the contours of this sloping site. The curved west elevation overlooks the college pond and incorporates solar shading to limit classroom heat gain in the summer. The orientation of the building allows maximum flexibility for future expansion and internally moveable partitions allow classrooms and laboratories to be opened up for larger groups

PROJECT VALUE: £1.5 MILLION

STAGE: COMPLETED



contact

Romsey

Tollgate Estates
Stanbridge Earls
Romsey
Hampshire
SO51 0HE
Tel: 01794 511255
Email: admin@studiofourarchitects-romsey.co.uk
Website: www.studiofourarchitects.com

Winchester

Sherwood House
8 Upper High Street
Winchester
SO23 8UT
Tel: 01962 820255
Email: admin@studiofourarchitects-winch.co.uk
Website: www.studiofourarchitects.com

Southampton

1-3 Lyon Street
Southampton
Hampshire
SO14 0LD
Tel: 02380 228923
Email: admin@studiofourarchitects-soton.co.uk
Website: www.studiofourarchitects.com



Who we are



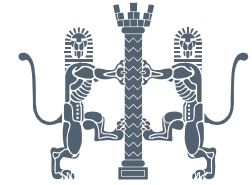
Romsey Directors (clockwise from top left)
Stephen Hole, Philip Amey, Peter Barnett



Winchester Director
Michael Brownlow



Southampton Director
Gareth Jenkins



Studio Four Architects Ltd is an RIBA registered practice with over 30 years of experience in a diverse range of project types. With around 40 staff in 3 offices across Hampshire we can provide valuable, professional advice on the construction process and it is never too late or too early to contact us for professional assistance.