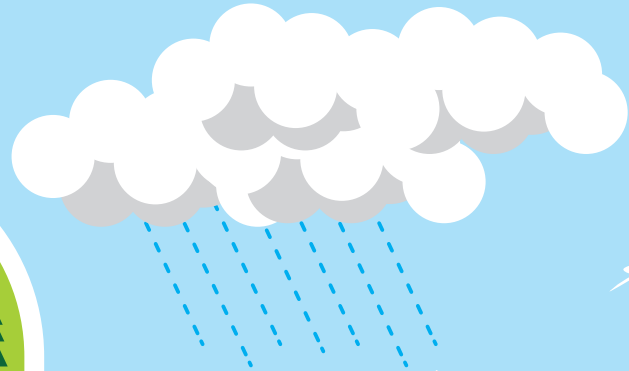
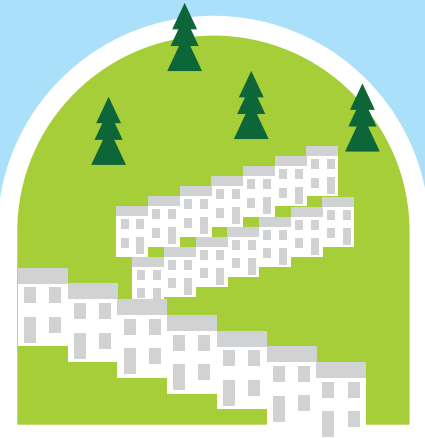
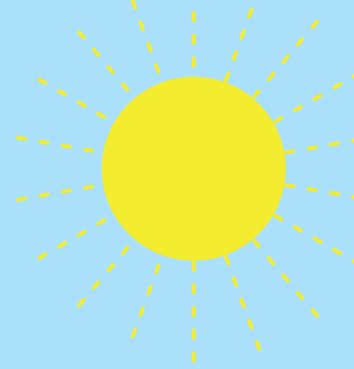
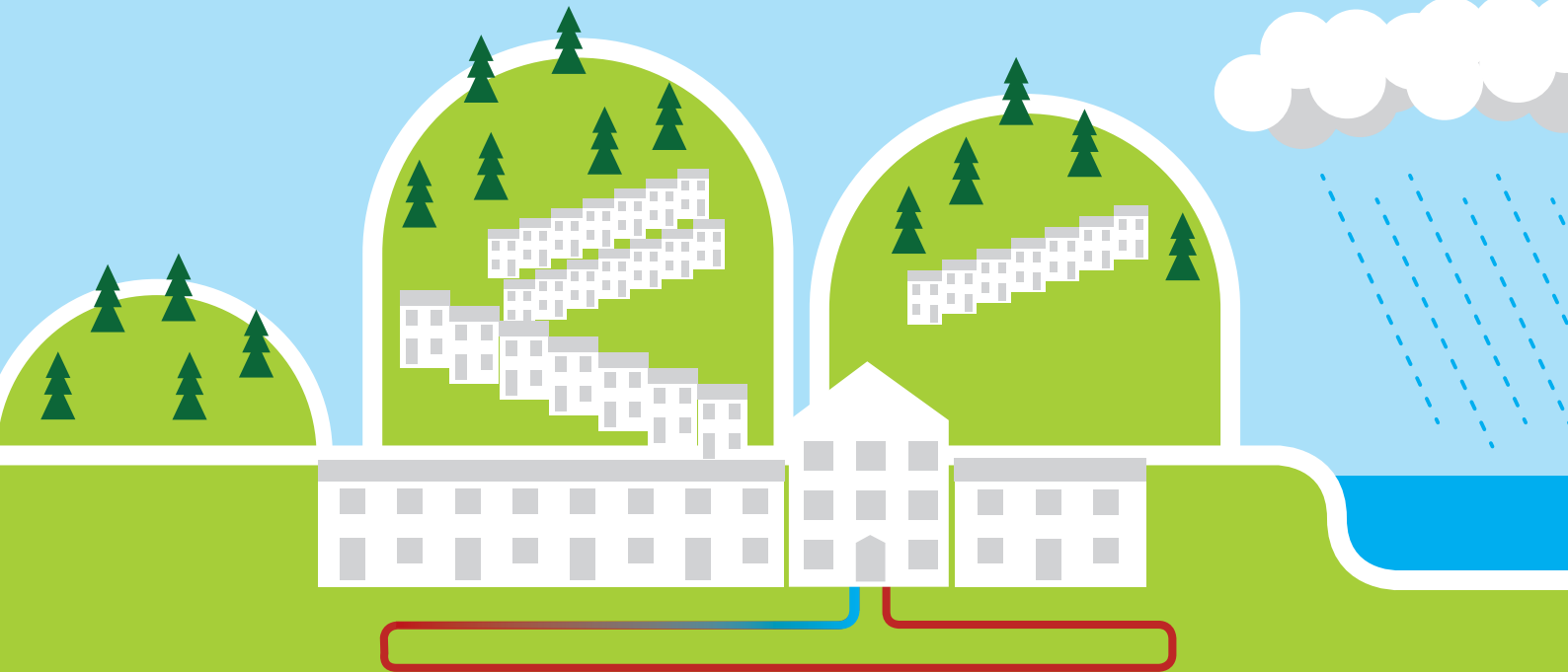


generate

community energy guide

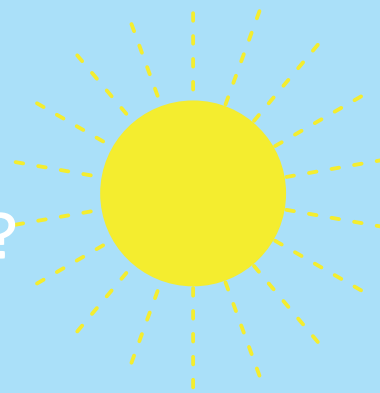


generate understanding



“Community Energy” - what does it mean to us?

- Energy saving – means saving energy and money in homes and in community buildings.
- Energy generation – means generating energy and income in homes, in community buildings and at other suitable locations.
- Both of these measures can mean more money for homeowners and community groups which can be spent on local goods, services and community activities.



generate awareness

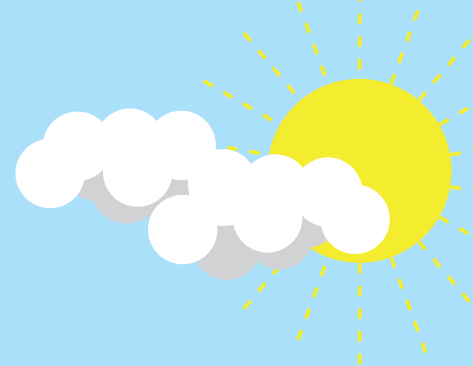




Why is Community Energy important?

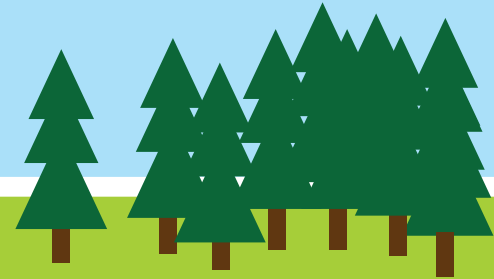
- Rising energy prices mean rising fuel bills so we need to find ways to reduce the amount of energy we use, and look at how we can generate an income through energy production.
- We are currently dependent on energy imported from outside of the UK. We need to produce more energy locally, to better control prices and ensure a constant supply.
- Cuts to public spending mean that community groups are finding it harder to get the money they need to continue operating. Community energy generation projects can provide a new source of income for community groups.
- It is widely accepted that climate change is a reality. Regardless of the cause we need to address the challenge by reducing emissions and generating more energy from renewable sources.

generate opportunities



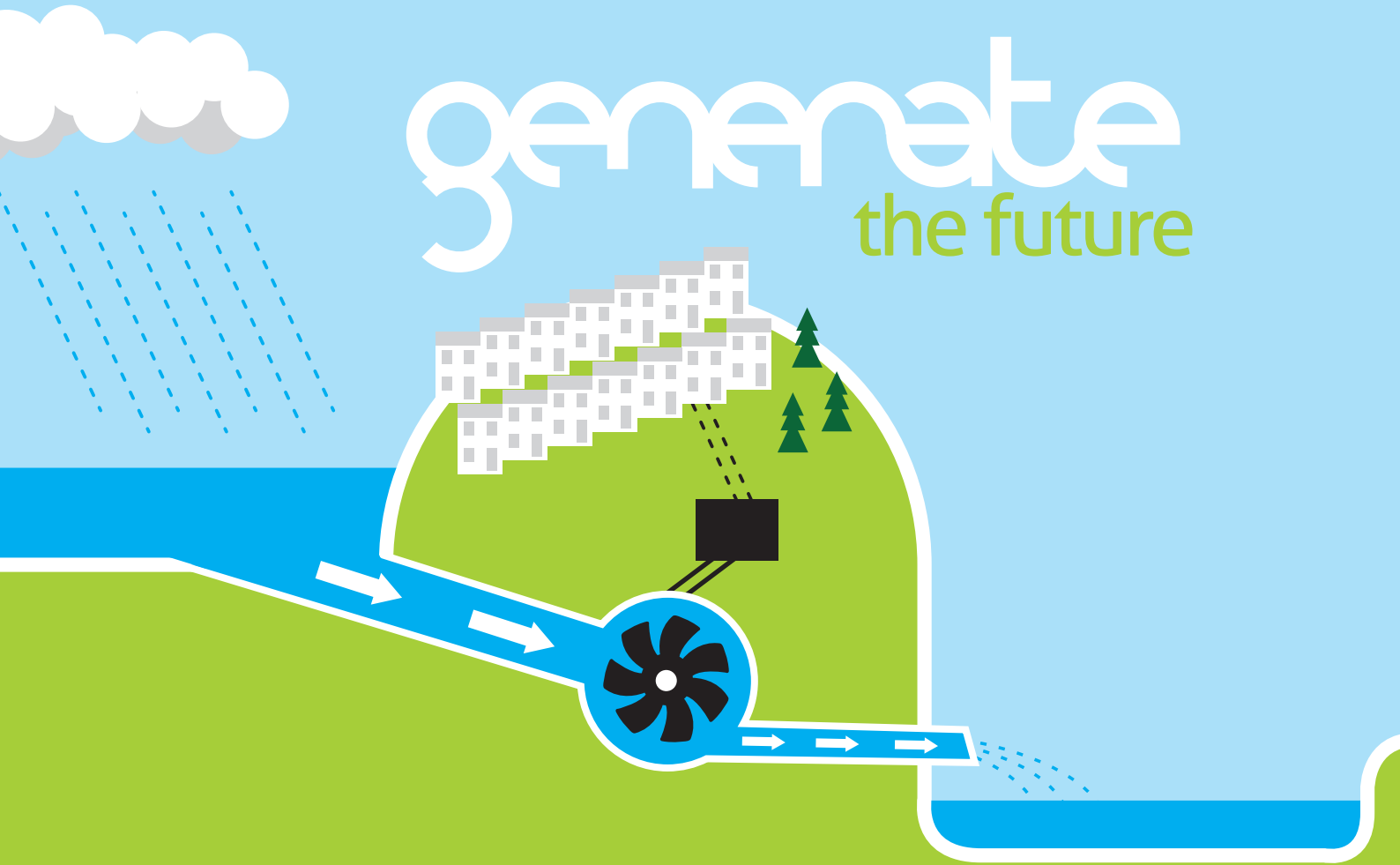
Some benefits of Community Energy projects

- Projects can, in some circumstances, directly result in lower fuel bills for local people.
- Generation schemes can provide a new source of income for projects in the local community.
- Projects enable local people to make an impact on global issues.
- Projects are run by local people and give local people a say in how they are run and how the benefits are managed.
- Generation projects can be a more efficient way of generating energy as much of the work is carried out by volunteers and the energy they produce is consumed in the locality.
- Generation projects help to balance energy supply with energy demand by creating a constant background of energy generating capacity.



generate

the future

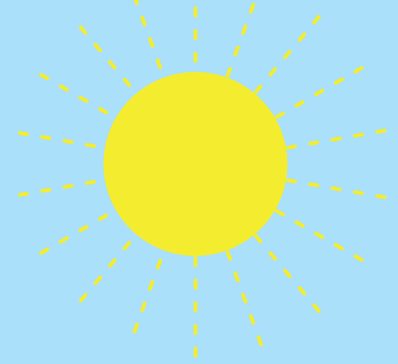


Case Study

Cwm Clydach Development Trust

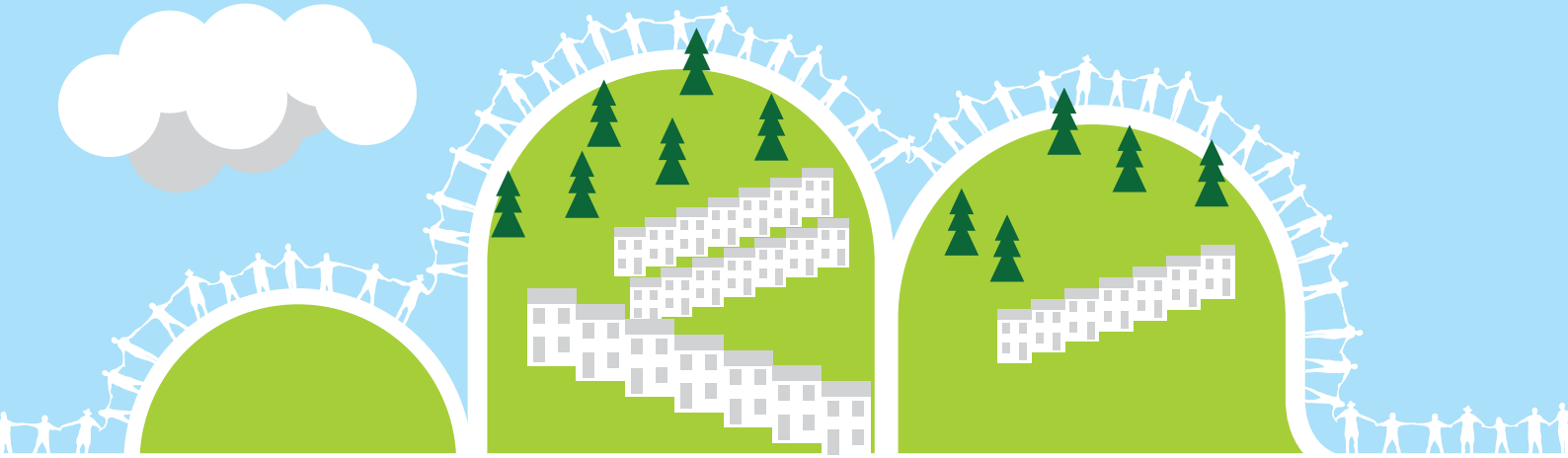
Projects like the hydro turbine at Cwm Clydach are an excellent example of what many communities in Rhondda Cynon Taff could achieve.

Cwm Clydach Development Trust successfully bid for funding to develop a micro-hydro scheme. Water from a local stream turns a concealed turbine which generates electricity. The electricity is sold into the national grid and attracts a government subsidy generating an income of approximately £20k a year which is used to help fund a range of community projects including a childcare facility and a community café.



generate

support



Some ways to promote your Community Energy project and get people involved

- Distributing leaflets door to door and through community venues.
- Inviting people to community meetings.
- Having an information stand at community events.
- Visiting existing community groups and associations, telling them about the project and asking for their support.
- Making good use of social networks like Facebook and Twitter.
- Using the local media to help publicise the project.
- Writing effective press releases.



generate links



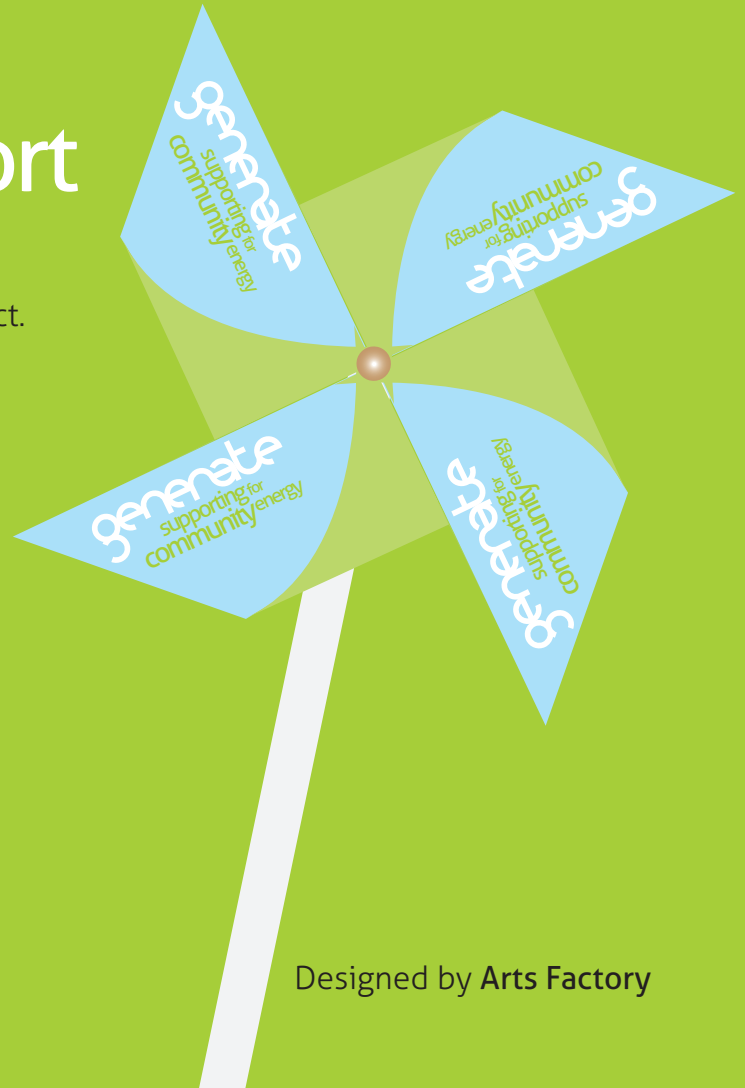
Useful websites

- **community energy guide**
www.nef.org.uk/communities
- **community energy tools**
www.planlocal.org.uk
- **national energy saving campaign**
www.1010uk.org
- **national energy saving initiative**
www.energysavingtrust.org.uk
- **community energy on-line**
www.ceo.decc.org.uk
- **legal support**
www.carbonleapfrog.org.uk
- **community energy guide**
www.tinyurl.com/coopinvestmentguide
- **guide about how to set up a community share offer**
www.communityshares.org.uk
- **Rough Guide to Community Energy**
tinyurl.com/communityenergyguide
- **your local source of advice, support and training**
www.interlinkrct.org.uk
- **support and funding for community energy projects**
tinyurl.com/ynnirfro



Show your support

Make and display your own cut out and keep windmill in support of your local energy project.



The project is funded through the Department of Energy and Climate Change.

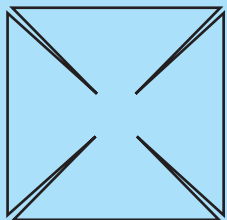


Designed by Arts Factory

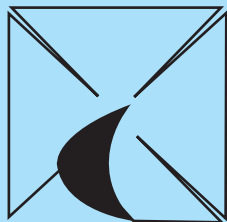
Make a windmill

You need: A drawing pin, a drinking straw and a rounded scissors.

1. tare along perforated line.



2. Cut along diagonal lines.



3. Make small holes in corners and centre with pin where indicated and curl pricked corners to centre. Line up holes and push pin through all then affix to straw or garden cane.

generate
support for
community energy

generate
support for
community energy

generate
support for
community energy

generate
support for
community energy

Contact details

