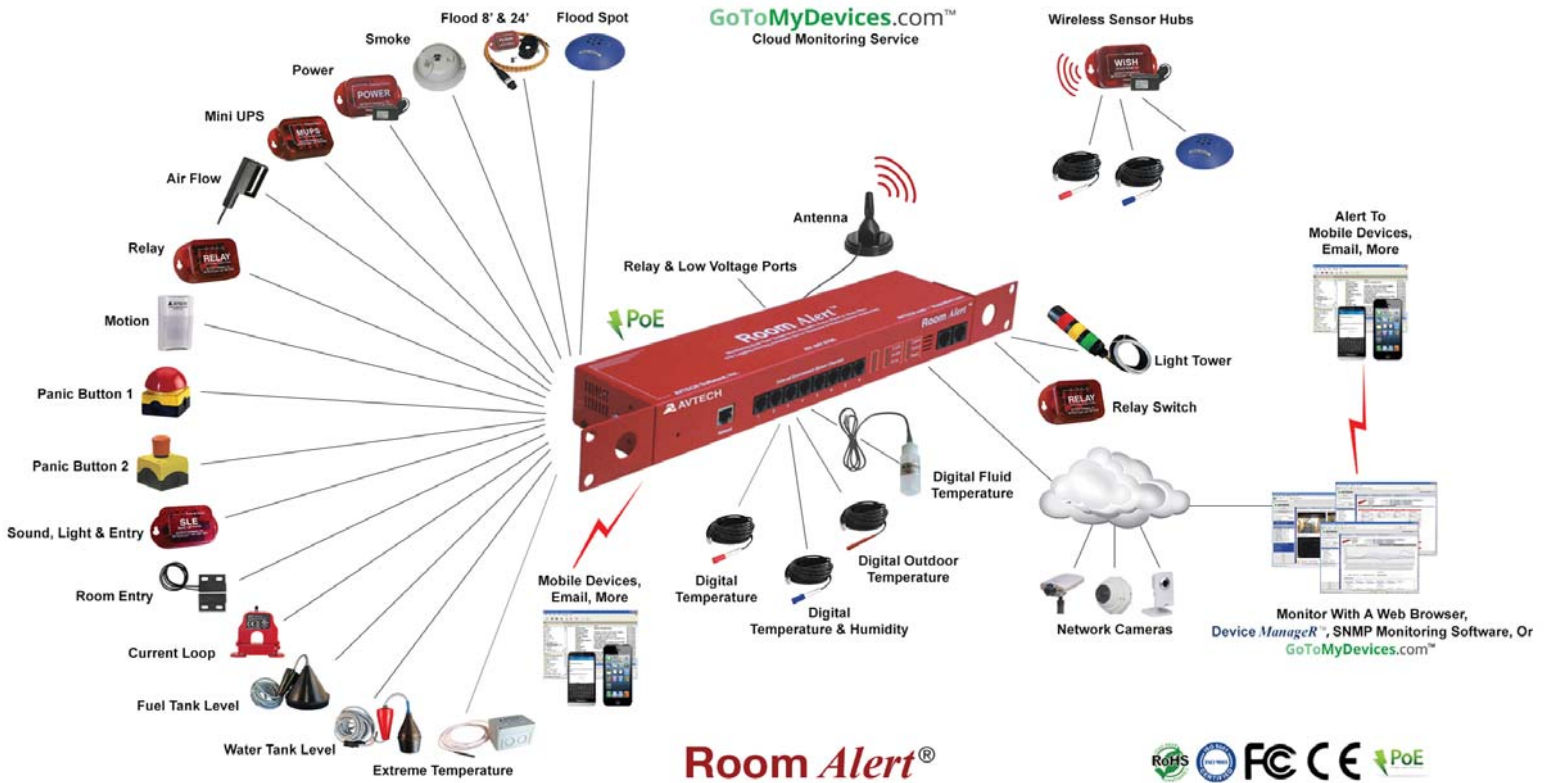


Protect Your Facility...

Don't Wait Until It's Too Late!™



Install Room Alert® Monitors

The Most Advanced, Easy-To-Use, Reliable & Affordable Monitors Available To...

MONITOR, ALERT... LOG, GRAPH... VIEW, REPORT... MANAGE, PROTECT...

- Digital Temperature
- Digital Outdoor Temperature
- Digital Fluid Temperature
- Digital Humidity
- Main / UPS Power
- Flood / Water
- Current Loops (Amperage)
- Extreme High / Low Temperature
- Heat Index (Feels Like)
- Smoke / Fire
- Fuel / Water Tank Level
- Air Flow, Sound, Light
- Motion, Room Entry
- Panic Button, Security
- Light Towers, Relay Switches
- Wireless Sensor Hubs
- Network Cameras
- Analog Power & Temp Sensors
- Switch Sensors
- Dry Contacts
- Low Voltage Sensors

In This Catalog

Sample Room Alert Layout.....	Front Cover
About AVTECH.....	2
Room Alert: Advanced IT & Facilities Environment Monitoring, Alerting & More.....	3
Room Alert 32W Overview.....	4
Room Alert 32E Overview.....	5
Room Alert 12E / 12ER Overview.....	5
Room Alert 4E / 4ER Overview.....	6
Room Alert 3E Overview.....	6
Room Alert 3 Wi-Fi Overview.....	6
GoToMyDevices.com: AVTECH's Cloud Solution For Monitoring Room Alert.....	7
Maximize Your Environmental Monitoring... Incorporate The Benefits Of Network Cameras.....	8
Network Cameras.....	9
A 'Sample List' Of AVTECH's Many Loyal & Valued Customers Around The World.....	10-11
Sensors, Wireless Hubs, Modems & Accessories.....	12-15
Device ManageR: Environmental Monitoring Just Got Easier.....	16
Device ManageR Overview.....	17
Plugin Bundles For Device ManageR.....	18-19
Environmental Monitoring Without The Need To Plug In To The Network.....	Back Cover

About AVTECH

AVTECH Software (AVTECH), a private corporation founded in 1988, is a computer hardware and software developer and manufacturer. Our **Room Alert**[®] products monitor computer rooms, data centers and other facilities for conditions such as temperature, humidity, power, flood / water, smoke / fire, air flow, room entry, motion, cameras and more. Alerting, logging and graphing are standard for all models. Automatic corrective actions resolve issues for a lights out response, allowing 'Disaster Prevention' instead of 'Disaster Recovery'. **Device ManageR**[™] is AVTECH's 'IT & Facilities Environment Monitoring' software. Device ManageR runs as a Windows Service and will automatically discover units across the network, log and graph sensor data, alert users when environmental events occur or thresholds are passed, and allows reporting, auto response, and much more. AVTECH has released its new **GoToMyDevices**[™] (GoToMyDevices.com) service which allows users to monitor and manage Room Alert devices and sensors through the cloud.

AVTECH has over 130,000 end users located in 179 countries, including organizations in every industry and on every continent. AVTECH products are heavily used by the Fortune 1000, Pentagon, United Nations, U.S. Government, U.S. Military, educational institutions, businesses of all types and sizes, and many others.

AVTECH products are available worldwide from professional IT and facilities resellers, online at EnvironmentMonitor.com or directly from AVTECH. To learn more about any AVTECH product or request a reseller in your country, visit us online at AVTECH.com or call **888.220.6700 / 401.628.1600**. Our team is happy to assist you.



Advanced IT & Facilities Environment Monitoring, Alerting & More...



Room Alert® is AVTECH's hardware and software solution that allows easy remote monitoring of the environmental conditions in an IT computer room, data center or other facility, from anywhere on the network or around the world. Room Alert is perfect for environments such as phone or wiring closets, critical rack cabinets, large computer rooms or data centers, cold storage facilities, restaurants, warehouses, multi-building plants and facilities of all types and sizes. Monitors are connected via Ethernet to the network and do not require a host PC for operation. Room Alert will help protect valuable equipment and other important assets to minimize downtime and reduce losses if conditions change or a disaster occurs. Use the built-in web server, bundled **Device Manager**™ software, **GoToMyDevices.com**™, or an SNMP application to monitor Room Alert devices network-wide.

Monitor Critical Environmental Conditions To Protect Equipment & Avoid Downtime...

- ✓ Temperature
- ✓ Power
- ✓ Humidity
- ✓ Flood / Water
- ✓ Smoke / Fire
- ✓ Room Entry
- ✓ Air Flow
- ✓ Motion
- ✓ Dry Contacts
- ✓ Much More...

Be The First To Know When Issues Occur With Advanced Alerting...

All Room Alert packages allow users to set up multi-method alert notifications in response to issues or events across the network or around the world. Alert notifications can be sent via email, email-to-SMS, SNMP, web page update and more, and communicate to devices such as computers, tablets, mobile phones and other mobile devices. The number of alert notifications are unlimited and can be scheduled to alert individuals, groups and hierarchies; different people for different devices, events, locations, etc.



Instant Discovery, Management, Alerting, Logging, Graphing, Server Shut Down, Automatic Corrective Actions & Much More...

In addition to Room Alert's built-in web browser interface, each monitor includes a license for AVTECH's Device Manager software application. Device Manager is bundled at no additional cost (i.e. FREE), adding important benefits and ease-of-use above and beyond any other competitive product. Device Manager is designed as an all-in-one tool for the discovery, management, monitoring, alerting, logging, graphing, automatic corrective action and more of AVTECH's environment monitors and Axis IP cameras. It runs as a Windows Service to provide greater security and is accessed through a powerful, easy-to-use web browser interface. It allows instant network discovery of monitors, automatic notification of firmware updates, multi-unit or group set-up, sensor data logging, graphing and more. Sensor data can be compared, exported to Excel and updated in real-time. Consider adding Axis cameras to receive snapshot images or video links with your alerts when issues or events occur. If you prefer to monitor through the cloud, check out GoToMyDevices.com.

Room Alert 32W (RA32W)



- Can accommodate **80+** sensors with Digital Temperature, Digital Humidity & Main Power sensors built-in.
- Includes a built-in UPS, Power over Ethernet (PoE), Powered Wireless Sensor Hub (P-WiSH), external Digital Temperature Sensor, external Room Entry Sensor, Factory Reset Button, On/Off Button, 2 External Relay Output Ports, 2 Light Tower & Relay Adapter Connection Ports, 2 0-5V Analog Sensor Input Ports & the Windows Plugin Bundle.
- Use Room Alert 32W's built-in web server, bundled Device ManageR software, GoToMyDevices cloud service, or any SNMP application to monitor unlimited units across your network.
- Room Alert 32W allows real-time monitoring, advanced alerting by email/email-to-SMS/SNMP and more, Fahrenheit/Celsius, high/low watermarks, PUSH technology, logging/graphing software, shutdown, reboot and log off capabilities & much more.
- Operate Room Alert 32W with or without a host system. That's right... *No PC Required!*

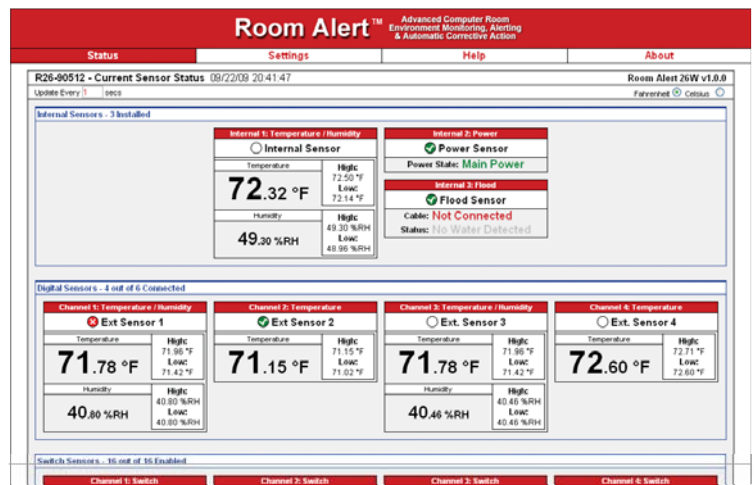


CALL
RA32W-WS1-RAS

INCLUDES: Room Alert 32W Rack Unit (1U 19"), built-in Digital Temperature Sensor, built-in Digital Humidity Sensor, built-in Main Power Sensor, external Digital Temperature Sensor, external Room Entry Sensor, 8 external Digital Sensor Ports (RJ-11), 16 Switch Sensor Channels, Power On/Off Button, Factory Reset Button, 15 Wireless Sensor Hub capacity, Power Over Ethernet (PoE), LED Sensor Status & Wireless Strength indicators, WLAN Activity indicators, built-in Uninterruptible Power Supply (UPS), Wireless Sensor Hub (Powered), rotating mounting wings, PUSH technology, Ethernet Connection (RJ-45), 2 External Light Tower or Relay Switch Sensor Connection Ports, 2 External Relay Output Ports (0.3A@125VAC / 1A@24VDC), 2 0-5V Analog Sensor Input Ports, External Antenna with 13' Cable, 10' Ethernet cable, 5V Power Adapter (110/240V, RoHS), built-in web server, SNMP Trap & Query enabled, SNMP MIB, bundled Device ManageR software license, Windows Plugin Bundle, printed *Room Alert 32E/W User's Guide & Reference Manual*, 1 year Personal subscription to GoToMyDevices, '30-Day Satisfaction Guarantee'. Optional sensors, Light Tower & Relay Adapters (LTAs), Relays Switch Sensors, voice or GSM modem & software plugin packages available.

Room Alert 32W is AVTECH's most advanced hardware solution for "Computer Room Environment Monitoring, Alerting & Automatic Corrective Action with a built-in UPS & Wireless Sensor Hub Monitoring". It is designed specifically to assist with monitoring computer room temperature, humidity, power and much more in multiple locations while utilizing wireless technology to avoid running cables. Room Alert 32W's Wireless Sensor Hub (WiSH) and Wireless Sensor Hub & Powered Relay (WiSPR) communicate via a secure, private protocol that is ZigBee compatible, allowing users the ability to monitor large numbers of sensors both indoors and out. Room Alert 32W allows direct connection of 8 digital sensors and 16 switch sensors, 10 WiSH or WiSPR units, and use of Light Towers or Relay Switch Sensors, low voltage sensors and more.

Room Alert 32W is the most advanced product of its type and an extreme value!



Sample Room Alert 32W web browser interface. This model allows use of **80+** sensors, with **40** via wireless connection. Advanced monitoring features are available by using AVTECH's Device ManageR software, included FREE. Customize your use with 'Plugins' for special functions.

Wireless Sensor Hub Options For Use With Room Alert 32W & 26W...

BEST SELLER

Wireless Sensor Hub (Powered)



RAW-PWSH-HUB

- Internal Digital Temperature Sensor.
- Temperature range: -67 – 257° F, -55 – 125° C.
- 2 digital ports, 1 switch sensor channel.
- Max wireless distance from Room Alert or a WiSPR is **250'** in ideal conditions.
- Max 10 WiSH / WiSPR hubs per Room Alert.
- Compatible with Room Alert 32W & 26W only.

INCLUDES: Wireless Sensor Hub, 5V Power Adapter & Installation Note. Max Range Approximately 250'.

MAX RANGE

Wireless Sensor Hub & Alert Relay



RAW-WSPR-HUB

- Internal Digital Temperature Sensor.
- Temperature range: -67 – 257° F, -55 – 125° C.
- 2 digital ports, 1 switch sensor channel.
- Powered Alert Relay technology built-in.
- Max wireless distance from Room Alert or another WiSPR is **350'** in ideal conditions.
- Max 10 WiSH / WiSPR hubs per Room Alert.
- Compatible with Room Alert 32W & 26W only.

INCLUDES: Wireless Sensor Hub & Alert Relay, 5V Adapter & Installation Note. Max Range Approximately 350'.

Contact **OPENXTRA** • Phone **+44 1943.465.918** • Email **Info@OPENXTRA.co.uk**

Room Alert 32E (RA32E)



- Can accommodate **32+** sensors with Digital Temperature, Digital Humidity & Main Power sensors built-in.
- Includes a built-in UPS, Power over Ethernet (PoE), external Digital Temperature Sensor, external Room Entry Sensor, Factory Reset Button, On/Off Button, 2 External Relay Output Ports, 2 Light Tower & Relay Adapter Connection Ports, 2 0-5V Analog Sensor & the Ports Windows Plugin Bundle.
- Use Room Alert 32E's built-in web server, bundled Device Manager software, GoToMyDevices cloud service, or any SNMP application to monitor unlimited units across your network.
- Room Alert 32E allows real-time monitoring, advanced alerting by email/email-to-SMS/SNMP and more, Fahrenheit/Celsius, high/low watermarks, PUSH technology, logging/graphing software, shutdown, reboot and log off capabilities & much more.
- Operate Room Alert 32E with or without a host system. That's right... *No PC Required!*



CALL

RA32E-TH1-RAS

INCLUDES: Room Alert 32E Rack Unit (1U 19"), built-in Digital Temperature Sensor, built-in Digital Humidity Sensor, built-in Main Power Sensor, external Digital Temperature Sensor, external Room Entry Sensor, 8 external Digital Sensor Ports (RJ-11), 16 Switch Sensor Channels, Power On/Off Button, Factory Reset Button, Power Over Ethernet (PoE), LED Sensor Status indicators, built-in Uninterruptible Power Supply (UPS), rotating mounting wings, PUSH technology, Ethernet Connection (RJ-45), 2 External Light Tower or Relay Switch Sensor Connection Ports, 2 External Relay Output Ports (0.3A@125VAC / 1A@24VDC), 2 0-5V Analog Sensor Input Ports, 10' Ethernet cable, 5V Power Adapter (110/240V, RoHS), built-in web server, SNMP Trap & Query enabled, SNMP MIB, bundled Device Manager software license, Windows Plugin Bundle, printed *Room Alert 32E/W User's Guide & Reference Manual*, 1 year Personal subscription to GoToMyDevices, '30-Day Satisfaction Guarantee'. Optional sensors, Light Tower Adapters (LTAs), Relay Switch Sensors, voice or GSM modem & software plugin packages available.

Room Alert 12E (RA12E & RA12ER)



- Can accommodate **11+** sensors with a Digital Temperature Sensor built-in.
- Includes Power over Ethernet (PoE), external Digital Temperature Sensor, external Power Sensor, Factory Reset Button, External Relay Output Port, Light Tower & Relay Adapter Connection Port, and 0-5V Analog Sensor Port.
- Use Room Alert 12E's built-in web server bundled Device Manager software, GoToMyDevices cloud service, or any SNMP application to monitor unlimited units across your network.
- Room Alert 12E allows real-time monitoring, advanced alerting by email/email-to-SMS/SNMP and more, Fahrenheit/Celsius, high/low watermarks, PUSH technology, logging/graphing software, shutdown, reboot and log off capabilities & much more.
- Operate Room Alert 12E with or without a host system. That's right... *No PC Required!*



CALL


RA12E-TH1-RAS (Rack Mount)
RA12E-TH1-WAS (Standard)

INCLUDES: Room Alert 12E monitor, built-in Digital Temperature Sensor, external Digital Temperature Sensor, external Power Sensor, 3 Digital Sensor Ports (RJ-11), 4 Switch Sensor Channels, Factory Reset Button, Power Over Ethernet (PoE), PUSH technology, Ethernet Connection (RJ-45), Light Tower & Relay Adapter Connection Port, Relay Output Port (0.3A@125VAC / 1A@24VDC), 0-5V Analog Sensor Input Port, 10' Ethernet cable, 5V 1A Power Adapter (110/240V, RoHS), built-in web server, SNMP Trap & Query enabled, SNMP MIB, bundled Device Manager software license, printed *Room Alert 12E User's Guide & Reference Manual*, 1 year Personal subscription to GoToMyDevices, '30-Day Satisfaction Guarantee'. Optional rack mount bracket, sensors, Light Tower & Relay Adapter (LTA), voice or GSM modem & software plugin packages available.

Consider Adding More Of Our Most Popular Sensors To Maximize Protection...

BEST SELLER

Digital Temperature Sensor




- Real-time temperature sensor.
- Temperature range: -67 – 257° F, -55 – 125° C.
- Compatible with Room Alert 32E/W, 26E/W, 24E, 12E, 11E, 7E, 4E, 3E, TemPageR 4E & 3E, WiSH & WiSPR.
- Options include sensor with attached cables of 25', 50' and 100' length. Max cable distance is 100'.

TMP-SDT-SEN
TMP-DT50-SEN
TMP-DT100-SEN

INCLUDES: Digital Temperature Sensor With 25' RJ-11 Cable & Installation Note.

BEST SELLER

Digital Temperature & Humidity Sensor



- Real-time temperature and humidity sensor.
- Temperature range: -67 – 257° F, -55 – 125° C.
- Relative humidity range: 5 to 95% non-condensing.
- Compatible with Room Alert 32E/W, 26E/W, 24E, 12E, 11E, 4E, 3E, WiSH & WiSPR.
- Options include sensor with attached cables of 25', 50' and 100' length. Max cable distance is 100'.

RMA-DTH-SEN
RMA-DTH50-SEN
RMA-DTH100-SEN

INCLUDES: Digital Temperature & Humidity Sensor With 25' RJ-11 Cable & Installation Note.

Room Alert 4E (RA4E & RA4ER)



- Can accommodate **4+ sensors** and a Light Tower or Relay Switch Sensor. Built-in Digital Temperature Sensor.
- Includes 1 external Digital Temperature Sensor, 2 Digital Sensor Ports, 1 Switch Sensor Channel, 1 Light Tower or Relay Switch Sensor Port.
- Use Room Alert 4E's built-in web server, bundled Device ManageR software, GoToMyDevices cloud service, or any SNMP application to monitor unlimited units across your network.
- Room Alert 4E allows real-time monitoring, advanced alerting by email/email-to-SMS/SNMP and more, Fahrenheit/Celsius, high/low watermarks, PUSH technology, logging/graphing software, shutdown, reboot and log off capabilities & much more.
- Operate Room Alert 4E with or without a host system. That's right... *No PC Required!*



CALL

RA4E-ES1-RAS (Rack Mount)
RA4E-ES1-WAS (Standard)

INCLUDES: Room Alert 4E, built-in Digital Temperature Sensor, external Digital Temperature Sensor, 2 Digital Sensor Ports (RJ-11), 1 Switch Sensor Channel, PUSH technology, Ethernet Connection (RJ-45), Light Tower Expansion Port, 10' Ethernet cable, 5V Power Adapter (110/240V, RoHS), built-in web server, SNMP Trap & Query enabled, SNMP MIB, bundled Device ManageR software license, printed *Room Alert 4E User's Guide & Reference Manual*, 1 year Personal subscription to GoToMyDevices, '30-Day Satisfaction Guarantee'. Optional rack mount bracket, sensors, Light Tower or Relay Switch Sensor, voice or GSM modem & software plugin packages available.

Room Alert 3E (RA3E)



- Can accommodate **3+ sensors** and a Light Tower or Relay Switch Sensor. Built-in Digital Temperature Sensor.
- Includes 1 Digital Sensor Port, a Switch Sensor Channel, and a Light Tower & Relay Adapter can be optionally connected through the Digital Sensor Port.
- Use Room Alert 3E's built-in web server, bundled Device ManageR software, GoToMyDevices cloud service, or any SNMP application to monitor unlimited units across your network.
- Room Alert 3E allows real-time monitoring, advanced alerting by email/email-to-SMS/SNMP and more, Fahrenheit/Celsius, high/low watermarks, PUSH technology, logging/graphing software, shutdown, reboot and log off capabilities & much more.
- Operate Room Alert 3E with or without a host system. That's right... *No PC Required!*



CALL
RA3E-ESO-BAS

INCLUDES: Room Alert 3E ID Box (0U, 3-5/8" L x 1-3/4" W x 1" H), built-in Digital Temperature Sensor, 1 external Digital Sensor Port (RJ-11), 1 Switch Sensor Channel, Factory Reset Button, Power over Ethernet (PoE), PUSH technology, Ethernet Connection (RJ-45), 10' Ethernet cable, 5V Power Adapter, (110/240 V, RoHS), built-in web server, SNMP Trap & Query enabled, SNMP MIB, bundled Device ManageR software license, printed *Room Alert 3E User's Guide & Reference Manual*, 1 year Personal subscription to GoToMyDevices.

NEW

Room Alert 3 Wi-Fi (RA3W)



- Can accommodate **3+ sensors**. Built-in Digital Temperature Sensor.
- Includes 1 Digital Sensor Port, a Switch Sensor Channel, and a Light Tower & Relay Adapter can be optionally connected through the Digital Sensor Port.
- Use Room Alert 3E's built-in web server, bundled Device ManageR software, GoToMyDevices cloud service, or any SNMP application to monitor unlimited units across your network.
- Room Alert 3 Wi-Fi allows real-time monitoring and environment monitoring, logging, one click data export, advanced alerting by email/email-to-SMS and more, Fahrenheit/Celsius, high/low watermarks, PUSH technology, logging/graphing software, shutdown, reboot and log off capabilities & much more.
- Operate Room Alert 3 Wi-Fi with or without a host system. That's right... *No PC Required!*



CALL
RA3W-ES0-BAS

INCLUDES: Room Alert 3 Wi-Fi ID Box (0U, 3-5/8" L x 1-3/4" W x 1" H), built-in Digital Temperature Sensor, 1 external Digital Sensor Port (RJ-11), 1 Switch Sensor Channel, Factory Reset Button, Wi-Fi capabilities, PUSH technology, 5V Power Adapter (110/240 V, RoHS), bundled Device ManageR software license, printed *Room Alert 3 Wi-Fi User's Guide & Reference Manual*, 1 year Personal subscription to GoToMyDevices, '30-Day Satisfaction Guarantee'. Optional sensors, Light Tower & Relay Adapter, voice or GSM modem & software plugin packages available.

Contact **OPENXTRA** • Phone **+44 1943.465.918** • Email **Info@OPENXTRA.co.uk**

Manage Devices... *Anywhere... Anytime!*™

Easily, conveniently and securely through the cloud.

AVTECH'S Cloud Solution For Monitoring **Room Alert**®

GoToMyDevices is AVTECH's new cloud service, designed to make it easy to monitor temperature and environmental conditions from anywhere, at any time, through the cloud via the web. Enjoy the same alert interface from any device.

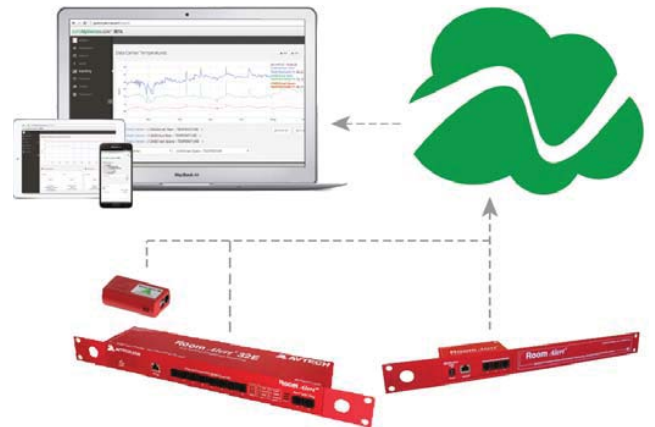
GoToMyDevices is designed specifically to assist with monitoring temperature and other environmental conditions without the worries of installing software, configuring an email server, configuring network settings, allocating disk storage, or running regular data backups. GoToMyDevices handles all of this automatically in the cloud, with a user experience that is always consistent whether on a desktop, laptop, tablet or mobile device.

GoToMyDevices logs all sensor data for historical review, analysis and verification. This eliminates the need for users to manage data for long term access and backup. Easy CSV export allows in-house data collection and local manipulation to meet regulatory reporting requirements or management objectives. Users can easily display values over time on a graph for any of their connected devices. Time and date ranges are adjustable and interactive with zoom features to explore data at detailed levels. An export to PDF option allows snapshot views to be created and saved on the fly.

Reports can be easily created for different device types, groups of devices, teams, locations and other criteria. Reports can pull data from any sensor or Room Alert device network-wide, allowing side-by-side comparisons within a graph, and providing complete flexibility as to what can be included within a report. Using reports enables managers to get the view and insight they need and want on a regular basis for better decision making, faster response, and planning. This leads to greater uptime for organizations, lower meantime between hardware failures, and smarter energy consumption.

Alerts are easy to configure and do not require access to an email server or other external service. Simply enter the desired email or SMS address to notify and the conditions that should trigger an alert and GoToMyDevices will do the rest. GoToMyDevices allows users to get notified and respond appropriately before alert conditions impact their operations or facilities. This provides peace-of-mind for users who can be assured that all is well when they are away.

With its ease of use, advanced capabilities and affordable subscription rates, AVTECH expects GoToMyDevices to quickly become the most trusted and dependable method for monitoring temperature and environmental conditions monitored by Room Alert. Register today and get started now at <http://GoToMyDevices.com>.



MONITOR, ALERT... LOG, GRAPH... VIEW, REPORT... MANAGE, PROTECT...

Log In or [Register](#) at GoToMyDevices.com

Maximize Your Environmental Monitoring...



Incorporate The Benefits Of Network Cameras

Have you considered adding network IP cameras to your **Environment Monitoring** program? Install cameras anywhere to experience a real-time view of what is actually happening in your computer room, data center or other facility. Use in combination with AVTECH's **Device ManageR™** software to send snap shot photos with alerts, view real-time video for multiple cameras simultaneously from a single IP address, and incorporate camera sensors. Take advantage of features that will enhance your **Room Alert®** physical environment monitoring.

➤ Full Integration w/Device Manager

All Axis cameras can be fully integrated with AVTECH's Device Manager software. Device Manager will allow users to discover an unlimited number of Axis cameras found across the network and acts as a single interface for viewing real-time images for multiple & unlimited cameras. View a single image or group of images when events occur at your facility.

➤ Superior Image Quality

Axis network cameras provide crystal clear video images as well as outstanding network performance. In addition to high megapixel and HDTV images, Axis network cameras use progressive scan to ensure superior image quality in scenes with a high degree of motion.

➤ Motion Detection

Want to know who enters or leaves your data center? Easy-to-use motion detection is available for all Axis cameras, making surveillance more efficient by taking snapshot images, triggering an alarm and/or recording when motion is detected in monitored areas.

➤ Enhanced Video Surveillance w/Audio

Connect a microphone or other audio equipment to your Axis network cameras and know exactly what is happening in your IT data center or other facility. Use audio detection to listen for unusual sounds, trigger an event, or record the view and sounds during a break-in, hardware malfunction or other situation.

➤ Wired, Wireless & PoE Solutions

For optional installation flexibility or monitoring in buildings where network and power access may be limited, Axis offers wired, wireless and PoE options, scalable to fit your monitoring and security needs.



* AVTECH's Device Manager software allows FREE monitoring of unlimited cameras such as the M1014 (shown). Axis charges \$100 per camera for this service.

LOW PRICE

Axis M1013 Camera



AX-M1013-CAM

- H.264, Motion JPEG, MPEG-4. 30 FPS (800 x 600).
- Motion Detection, Active Tampering Alert.
- Password, IP Filtering, HTTPS, IPv4/v6, Qos. More info online.
- Send Snapshots with Alerts or a link to Live Video using AVTECH's Device Manager software.

INCLUDES: Axis M1013 Camera, 10' Ethernet Cable, 9VDC Power Adapter & Mounting Stand.

Axis M1014 Camera



AX-M1014-CAM

- H.264, Motion JPEG, MPEG-4. 30 FPS (1280 x 800).
- Motion Detection, Active Tampering Alert.
- Multi-level Password, IP Filtering, HTTPS Encryption, IPv4/v6, Qos. More info online.
- Send Snapshots with Alerts or a link to Live Video using AVTECH's Device Manager software.

INCLUDES: Axis M1014 Camera, 10' Ethernet Cable, 9VDC Power Adapter & Mounting Stand.

BEST SELLER

Axis M1033-W Camera



AX-M1033W-CAM

- H.264, Motion JPEG. 30 FPS (800 x 600).
- Two-way Built-in Microphone & Speaker, Motion Detection, Audio Detection, Active Tampering Alert.
- Multi-level Password, IP Filtering, HTTPS Encryption, IPv4/v6, Qos.
- Built-in PIR sensor, Illumination LED, Digital PTZ, Corridor Format. More info online.
- Send Snapshots with Alerts or a link to Live Video using AVTECH's Device Manager software.

INCLUDES: Axis M1033-W Camera, 10' Ethernet Cable, 9VDC Power Adapter & Mounting Stand.

Axis M1103 Camera



AX-M1103-CAM

- H.264, Motion JPEG. 30 FPS (800 x 600).
- Motion Detection, Active Tampering Alert, Axis Camera Application Platform.
- Multi-level Password, IP Filtering, HTTPS Encryption, IPv4/v6, Qos.
- PoE, Digital PTZ, Pixel Counter, Corridor Format (3:4 only). More info online.
- Send Snapshots with Alerts or a link to Live Video using AVTECH's Device Manager software.

INCLUDES: Axis M1103 Camera, 10' Ethernet Cable, 9VDC Power Adapter & Mounting Stand.

Axis M3203 Camera



AX-M3203-CAM

- H.264, Motion JPEG. 30 FPS (800 x 600).
- Motion Detection, Active Tampering Alert, Axis Camera Application Platform.
- Multi-level Password, IP Filtering, HTTPS Encryption, IPv4/v6, Qos.
- PoE, Tamper Resistant, Vandal Resistant, Digital PTZ, Pixel Counter, Corridor Format. More info online.
- Send Snapshots with Alerts or a link to Live Video using AVTECH's Device Manager software.

INCLUDES: Axis M3203 Camera, 10' Ethernet Cable, 9VDC Power Adapter & Mounting Stand.

Axis P3353 Camera



AX-P3353-CAM

- H.264, Motion JPEG. 30 FPS (800 x 600).
- Two-way Built-in Microphone & Speaker, Motion Detection, Audio Detection, Active Tampering Alert, Axis Camera Application Platform.
- Multi-level Password, IP Filtering, HTTPS Encryption, IPv4/v6, Qos.
- PoE, Tamper Resistant, Vandal Resistant, WDR, Pixel Counter, Corridor Format (3:4 only). More info online.
- Send Snapshots with Alerts or a link to Live Video using AVTECH's Device Manager software.

INCLUDES: Axis P3353 Camera, 10' Ethernet Cable, 9VDC Power Adapter & Mounting Stand.

Axis M3007-PV Camera



AX-M3007PV-CAM

- Motion JPEG, MPEG-4. 30 FPS (2952 x 1944).
- PTZ with 20 presets, 140° Pan, 105° Tilt, Two-way Built-in Microphone & Speaker, Motion Detection, Audio Detection.
- Multi-level Password, IP Filtering, HTTPS Encryption, IPv4/v6, Qos.
- PoE, 3x Instant Zoom, Continuous Motion 24/7, Vandal Resistant. More info online.
- Send Snapshots with Alerts or a link to Live Video using AVTECH's Device Manager software.

INCLUDES: Axis M3007PV Camera, 10' Ethernet Cable, 9VDC Power Adapter & Mounting Stand.

AWESOME

Axis P5512 Camera



AX-P5512-CAM

- H.264, Motion JPEG. 30 FPS (704 x 480).
- PTZ with 100 presets, 360° Pan, 180° Tilt, Two-way Built-in Microphone & Speaker, Motion Detection, Audio Detection, Advanced Gatekeeper, Axis Camera Application Platform.
- Multi-level Password, IP Filtering, HTTPS Encryption, IPv4/v6, Qos.
- PoE, 12 Optical Zoom, 4x Digital Zoom, Pixel Counter, SD/SDHC Slot, IP51, IP66 and NEMA 4X ratings.
- Send Snapshots with Alerts or a link to Live Video using AVTECH's Device Manager software.

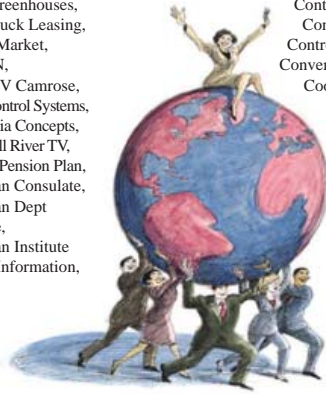
INCLUDES: Axis P5512 Camera, 10' Ethernet Cable, 9VDC Power Adapter & Mounting Stand.

* More Sensors, Cameras, Packages & Accessories Online.

A 'Sample List' Of AVTECH's Many...

Abbott Laboratories,
Abercrombie & Kent,
AboveNet,
Academy Mortgage,
Accenture,
Adams National Bank,
Advance America,
Advanced Business Systems,
Advanced Power Technologies,
Africa Inland Mission International,
African Development Foundation,
Agilent Technologies,
Agilis Networks,
Air Line Pilots Association,
Air Resource Specialists,
AirCom USA,
Airedale Hospital,
Airlinks Networking,
Alaska National Insurance,
Alberta Energy & Utilities Board,
Albuquerque Country Club,
Alien Technology,
Alion Science & Technology,
Alliance Hospitality Management,
Allied Resource,
Allied Waste Industries,
AM Castle / Castle Metals,
Amazon,
AMC Theatres,
Amcol International,
American Council On Education,
American Federal Bank,
American Management Systems,
American Pacific Fine Chemicals,
American Red Cross,
American Science & Engineering,
American Standard,
American Trucking Associations,
Amtrak,
Anchor General Insurance Agency,
ANH Refractories,
Anheuser Busch,
Anteon,
Anvil Knitwear,
Apple,
Applied Micro Circuits,
Aramark,
Arbinet,
ArcanaNetworks,
Archdiocese Boston,
Archdiocese Philadelphia,
Argonne National Laboratory,
Arizona Grain,
Artesyn Technologies,
Arts Alliance Media,
ASAP Software,
Asarco,
Astoria Federal,
AT&T,
ATK Mission Research,
Atlanta Bonded Warehouse,
Atlanta Memorial Hospital,
Atlanta Postal Credit Union,
Autoliv Electronics America,
Autoliv North America,
Automated Controls,
Avaya,
Avery Dennison,
Avid Technology,
Avon Community School District,
BAE Systems Spectral Solutions,
Baker Hughes Business Support,
Bakersfield Heart Hospital,
Ball State University,
Banco Sabadell,
Banta Book Group,
Barbados Ministry Finance,
Barnes Jewish Hospital,
Battelle Memorial Institute,
Baxter Regional Medical Center,
BayRing Communications,
Beasley Allen,
Bechtel,
Belize Electricity,
Bell Group,
Bell Security Solutions,
Bellagio Resort,
Ben Lippen School,
Benjamin School,

Bentley College,
Bermuda Police Service,
Bernina America,
Berry Plastics,
Big Canoe Property,
Biogen,
Black Box Network Services,
Blackwell Publishing,
Blessing Hospital,
Blitz Communications,
Blue Cross Idaho,
Boeing,
BoooYa Properties,
Border Masters,
Borg Warner Morse,
BowTie,
Brentwood Fire District,
Brevard Workforce Development Board,
Brigham Young University,
British Columbia Lottery,
British Petroleum,
Broward County Aviation,
Brown - Forman,
Brownells,
Bucknell University,
Building Champions,
Bureau Government Research,
Burts Greenhouses,
Bush Truck Leasing,
C & K Market,
C-SPAN,
Cable TV Camrose,
CAD Control Systems,
California Concepts,
Campbell River TV,
Canada Pension Plan,
Canadian Consulate,
Canadian Dept
Defense,
Canadian Institute
Health Information,



Canadian Medic Alert Foundation,
Canadian TV,
Canadian Wireless Integrators,
Cancer Therapy & Research Center,
Canon,
Capital Region Medical Center,
Capitol Media Group,
Cardiology Associates,
Cardium Health Services,
Care Advantage,
Castle Rock / Windser Industries,
Caterpillar,
Cellular One,
Center For Law & Social Policy,
Central States Indemnity,
Central Valley Regional Center,
Century Vallen,
Ceridian,
Cerritos Community College,
CH2M Hill,
Chevron,
Christian Church Homes Kentucky,
Ciba Specialty Chemicals,
Cingular,
Cisco Systems,
Citgo Petroleum,
Citizens Bank,
Citizens Memorial Healthcare,
City Albuquerque,
City Auburn,
City Baltimore,
City Brea,
City Fort Myers,
City Fredericksburg,
City Hope,
City Indian Hill,
City Lansing,
City Leesburg,
City Long Beach,
City Lynchburg,
City Mount Pleasant,

City New York,
City Richmond,
City Rocklin,
City San Francisco,
City San Jose,
City Spokane Valley,
City Wheaton,
City Winston Salem,
City Worcester,
Clark County Hospital,
Coastal Life Systems,
Coffeyville Regional Medical Centers,
Colonial Williamsburg Foundation,
Colorado State University,
Colorado Supreme Court,
Colsa,
Comcast,
Community Bank Connection,
Community Education Partners,
Community Newspaper Company,
Compassion International,
Computer Sciences,
Conley Publishing Group,
Conn-Selmer,
Connex Credit Union,
Constellation Energy,
Consumer Insurance Group,
Continental Cement,
Continental Teves,
Control Wizards,
Convergys,
Cook Childrens Medical,
Cooper Power Systems,
Core Logic,
Corel,
Cornerstone Technology,
Corning,
Cossette Post Comm,
County Sacramento,
Craig Hospital,
Creative Playthings,
Creighton University,
CrossHarbor Capital
Partners,
Crystal Golf Resort,
CrystalVoice Comm,
Culpepper & Terpening,
Cyberguard,
CyberResearch,
CyberZone,
Da-Lite Screen Company,
Dacor,
Dade County Federal Credit Union,
Daily Herald,
Daily Racing Form,
Dalhousie University,
Dana Farber Cancer Institute,
Dartmouth Advanced Imaging Center,
Davies Lavery Solicitors,
Day & Zimmerman,
DBH Global Seacoast Brokers,
DC Shoes,
Dearborn County Hospital,
Decker Truck Line,
Deer Valley Resort,
Defense Logistics Agency,
Delaware Federal Credit Union,
Delaware North,
Delta Queen Steamboat,
Deluxe Laboratories,
Deluxe Sound & Picture,
Denver Water,
DeRoyal,
DHL Express,
Digicon,
Diocese Rockville Centre,
Disney,
Dole Fresh Flowers,
Dollar General,
DoubleClick,
Dow,
Dual Graphics,
Duke Energy,
Duke Management Company,
Duquesne Capital Management,
Eagle Village,
Earth Resources Observation & Science,
East Hartford Police Department,
Eastern Michigan University,

Eastman Chemical,
Eastman Kodak,
EasyRent,
Eaton School District,
eBags,
eBay,
Edwards Lifesciences,
Efficient Capital,
Efficient Frontier,
El Clasificado,
Electronic Data Systems,
Eli Lilly,
Elkhart Telephone,
Elo TouchSystems,
Emerging Technologies,
Environmental Data Resources,
Equity Title,
Ericsson,
Erie Plastics,
Espaceland,
ESPN,
Essex Manufacturing,
Evansville State Hospital,
Excel Bank,
ExxonMobil,
Fair Acres Geriatric Center,
Farmers National Bank,
Fax Pipe,
Federal Aviation Administration,
Federal Bureau Investigation,
Federal Community Defender,
Federal Mogul,
Federal Express,
Federal Schedules,
Fednav,
FiberTower,
Fidelity National Financial,
First City Monument Bank,
First Energy,
First National Bank,
Fiserv,
Fish Market Restaurants,
FleetPride,
Florence City Board Education,
Florida Credit Union,
Florida Power & Light,
FMC,
Ford Models,
Ford Motor,
Four Seasons Resort & Club,
FPL Energy Duane Arnold,
Franklin County Schools,
Freedom International Brokerage,
Frontier Science,
Fujitsu Labs America,
Fujitsu Network Communications,
Fundacion Universidad Empressa,
Furness Logistics,
Furtive Networks,
Gartner Group,
Gaz Metro Plus,
Geckowrx,
Gehls Guernsey Farms,
Gemcraft Homes,
Genelco,
General Atomic,
General Dynamics,
General Electric,
General Motors,
GenerationE Technologies,
Georgia Dept State Audits,
Georgia State Ethics Commission,
Georgia State University,
Georgia Tech Campus Police,
Glades County,
Golf Warehouse,
Goodrich,
Goodwill,
Google,
Government Yukon,
Great Bay Distributors,
Great Lakes Energy,
Great Wolf Resorts,
Greenwich Prime Trading Group,
GS Cosmeceutical USA,
GTE,
GuideStone Financial Resources,
Guyana Sugar Corporation,
Haemonetics,

Hajoca,
Hanover Direct,
Harley-Davidson Motor,
Harris Connect,
Harrison Steel Castings,
Harvest House Publishers,
Hasibat Information Technologies,
Hawaii Baptist Academy,
Hawaii Health Information,
Hawaii State Dept Education,
Healthcon,
Heatcon Composite Systems,
Heavenly Mountain Resort,
Helen Hayes Hospital,
Hendrick Medical Center,
Henry Schein,
Heritage Broadcasting,
Herzog Transit Services,
Hewlett Packard,
Hobbs & Black Architects,
Holliston Public Schools,
Honeywell,
Hope College,
Horizon Offshore Contractors,
Hospital Corporation America,
IBM Global Services,
Idaho Attorney General,
Idaho National Laboratory,
Illinois Commerce Commission,
Illinois Mortgage Services,
Independent Container Line,
Independent Physicians Network,
Independent Purchasing Cooperative,
Industrial Fumigant Company,
Industrial Wood Products,
Inergy Automotive,
Ingersoll Rand,
Institute For Justice,
Institute Telecommunication Science,
Insurance Institute Highway Safety,
InterContinental Hotel Group,
International Environmental,
International Rectifier,
InTouch Solutions,
IntruGuard Devices,
Invensys Rail Systems,
Iowa Mold Tooling,
Iowa Mutual Insurance,
Iwatsu America,
Jack Morton Worldwide,
Jamaicas Credit Unions,
Jan Care Ambulance,
Jane Street Capital,
Jet Propulsion Laboratories,
Kaiser Permanente,
Kanakuk Kamps,
Kendal,
Kentucky League Cities,
KeySpan Energy,
King County Washington,
Kirklands,
Knights Armament,
Kokusai Semiconductors,
Komatsu Forklifts,
KRDOTV,
Labopharm,
Lafarge North America,
Lafarge Plasterboard,
Lake Michigan Financial,
Langlade Memorial Hospital,
Lansing Board Water & Light,
Lattice Semiconductor,
Leviton,
Liberty Insurance Services,
Life Alaska Donor Services,
LIGO Livingston Observatory,
Lloyds London,
Lockheed Martin,
Logic Group,
Los Alamos National Laboratories,
Los Angeles County Bar Association,
Los Angeles Daily News,
Los Angeles Police Federal Credit Union,
Lotsoff Capital Management,
Louisville Water,
Lynx Communications,
Majestic Steel USA,
Manpower UK,

Loyal & Valued Customers Around the World *

ManTech International,
Maritz,
Marquette University High School,
Marriott,
Martin Marietta,
Maryland General Assembly,
Maryland State Retirement,
Massachusetts General Hospital,
Massachusetts Institute Technology,
Maui Rural Development Project,
Maximum Care Ambulance,
Mayo Regional Hospital,
McDonald Observatory,
McDonnell Douglas,
McKee Food,
Medical Answering Services,
Medical Associates Health Centers,
Medical Center Bowling Green,
Medical Mutual Insurance Group,
Mennonite Mutual Aid,
Mercer Oliver Wyman,
Merchant & Gould,
Merchants Insurance Group,
Merck,
Merit Networks,
Merrill Lynch Commodities,
Meso Scale Discovery,
Metro Government Nashville,
Mettler Toledo,
MGM Mirage,
Miami Dade Fire Rescue,
Michael Anthony Jewelers,
Michael Baker Jr,
Michelin North America,
Michigan State University,
Micro Lithography,
Microsemi,
Microsoft,
MicroStream Communications,
Midland Paper,
Milliman,
Minnesota Dept Health,
Minnesota Dept Transportation,
Minnesota Elevator,
Mirabeau,
Mirage Casino,
Mississippi Dept Transportation,
Mobiclog,
Modern Postcard,
Molson - Coors,
Monogram Biosciences,
Montana Dept Labor & Industry,
Mooney Airplane Company,
Moores Lumber,
Morris Printing Group,
Morristown Municipal Airport,
Moseley Architects,
Motheral Printing,
Mudd Jeans,
Municipal Gas Authority Georgia,
Napa Electric,
Narcotics Anonymous World Services,
National 4H Council,
National Aeronautics & Space Admin,
National Animal Disease Center,
National Association Social Workers,
National Care Network,
National Cooperative Bank,
National Counterterrorism Threat Center,
National Farmers Organization,
National Gypsum,
National Institute Health,
National Institute Standards & Tech,
National Insurance Services,
National Logistics Support Center,
National Solar Observatory,
Naval Sea Combat Systems,
Naval Submarine Med Research Lab,
Naval Surface Warfare Systems,
Naval Undersea Warfare Center,
Naval Undersea Warfare Systems,
Naval Weapons Center,
Nebraskaland,
Nedco Supply,
Nevada Dept Employment Training & Rehab,
New Horizons Regional Education Ctr,
New York City,
New York Institute Technology,
New York Medical College,

New York University,
Newfoundland Power,
Newport Corporation,
Nexans Suisse,
Next Day Blinds,
Nissan Trading,
nMetric,
Nordenia USA,
Norman Regional Hospital,
North Arkansas Electric Cooperative,
North Carolina Dept Insurance,
Northrop Grumman,
Northwest Communications,
Northwestern College,
Northwestern Technical College,
Norwalk Hospital,
NotifyMD,
Nuance Communications,
Nuclear Management,
NurseFinder,
Oak Ridge National Laboratories,
Ohio State University,
Oklahoma County Government,
Oklahoma Dept Central Services,
Omnicell,
Omniure,
Oracle,
Orange County Fairgrounds,
Oxford University,
Pacific Capital Bancorp,
Pacific Cycle,
Pacific Medical,
Pacific Press Publishing,
Paddock Publications,
Palm Springs Follies,
Palm Springs Unified School District,
Paramount Group,
Parker Aerospace,
Pasadena City College,
Paul Revere School,
Penn-America Insurance,
Pennsylvania Dept Corrections,
Pennsylvania State University,
Pennzoil,
Pentagon Federal Credit Union,
Pentagon Systems,
Perr & Knight,
Peterson Holding,
Phoenix American Insurance,
Piggly Wiggly,
Pikes Peak Television,
Pinnacle Mortgage Group,
Pioneer State Mutual,
Placid Refining Company,
Planetwide Games,
Playboy,
Polk Burnett,
Portsmouth Public Schools,
PPD,
Pratt & Whitney,
Premier One,
Premier Service Bank,
PressCom,
PRG Schultz,
Price Waterhouse Coopers,
Princeton Theological Seminary,
Princeton University,
Private Capital Management,
Pro Pharma Pharmaceutical Consultants,
Professional Tool Manufacturing,
Prosodie Interactive,
Providence Hospital,
Publications International,
Pueblo Chemical Depot,
Pugh Lubricants,
Pulse Staffing,
Purdue Pharma,
Purdue University,
Qualitynet,
Quest Software,
Quickie Manufacturing,
Qwest Government Service,
Radiology Associates,
Raleigh Heart Clinic,
Raytheon,
RBC Dain Rauscher,
RBTT Bank,
Readers Digest,
RealNetworks,

Records Management & Archiving,
Reliant Technologies,
Reliv International,
Rensselaer Polytechnic Institute,
Research In Motion,
Rhode Island Dept Education,
Richmond State Hospital,
RightNow Technologies,
Riverside County,
Road America Motor Club,
Rochester Institute Technology,
Rockwell,
Rocky Mount Police,
Rocky Mountain Arsenal,
Roehl Transport,
Rohm & Haas,
Roke Manor Research,
Roth Capital Partners,
RR Donnelley,
Ryanair,
Sacramento Bee,
Sacramento County,
SAIC,
Saint Anselm College,
Salem Virginia Police,
Saltzer Medical Group,
San Diego Association Realtors,
Santa Cruz Networks,
SAP America,
Sargent Aerospace Canada,
Satcom Direct,
Satellite Healthcare,
SavATree,
SBC,
Scantek,
Schlumberger,
Science Place,
Seagate Technology,
Seattle Savings Bank,
Seibels Bruce Group,
Sender Cargo,
Sensus Metering Systems,
Serck Aviation,
SGX Pharmaceuticals,
Shell Federal Credit Union,
Sierra Nevada,
SiGe Semiconductor Europe,
Simply Wireless,
Skillsoft,
Skyhawks Sports Academy,
Slegg Lumber,
SmithKline Pharmaceuticals,
Society Exploration Geophysics,
Sony,
Sony Pictures Imageworks,
South Bend Medical Foundation,
South Carolina Dept Corrections,
South Carolina State Credit Union,
South Carolina Vocational Rehab,
Southeast Alabama Medical Center,
Southern Company,
Southern Company Nuclear,
Southern Illinois University,
Southern Star Central Gas Pipeline,
Southland Log Homes,
Southwestern Power Administration,
Special Olympics,
Spectra Logic,
Spokane County,
Sports Loyalty Systems,
St Francis Hospital,
St Mary Land & Exploration,
St Ritas Medical Center,
St Tammany Parish Government,
Standard Calibrations,
Standard Register,
Stanley Street Treatment & Resources,
State California,
State Florida,
State Georgia,
State Illinois,
State Indiana,
State Maine,
State Maryland,
State Michigan,
State Nebraska,
State New York,
State North Carolina,
State Ohio,

State Oregon,
State South Carolina,
State Texas,
State Washington,
Steelscape,
Streicher Mobile Fueling,
STS UtiliQuest,
Suez Canal Container Terminal,
Sulzer Pumps,
Swedish Medical Center,
Swift Transportation,
Swing N Slide,
Swinomish Northern Lights Casino,
Sylvan,
Sysco,
T-Mobile,
Taco,
Tecumseh Power,
Teksouth,
Telefonica del Sur Servicios Intermedios,
Texas A & M University,
Texas Gas Transmission,
Texas Memory Systems,
Texas Tech University,
Thomas M Cooley Law School,
ThyssenKrupp,
Time,
Time Group,
Time Warner Cable,
Toledo Edison,
Torrance Memorial Medical Center,
Total Safety US,
Town Brookhaven,
TrackMaster,
Trader Joes,
TransUnion,
TravelSmith,
Traverse City Area Public Schools,
Trident Systems,
Trinity Independent School District,
Trinity University,
Truck Enterprises,
TRW,
Tulane University,
Tumbleweed Communications,
Tundra Semiconductor,
Tycos Healthcare,
Tyler Refrigeration,
Union Pacific Railroad,
Union Street Bus,
Unit Dose Solutions,
United Moving,
United Nations,
United Parcel Service,
United Retail Group,
United Way,
University Alaska,
University Arizona,
University British Columbia,
University California,
University Chicago,
University Dayton,
University Delaware,
University Houston,
University Illinois,
University Iowa,
University Manitoba,
University Maryland,
University Michigan,
University Minnesota,
University Mississippi,
University Nebraska,
University Nevada,
University New Hampshire,
University New Mexico,
University Oklahoma,
University Pennsylvania,
University Pittsburgh,
University Richmond,
University San Francisco,
University South Carolina,
University Southern California,
University Southern Indiana,
University Texas,
University Virginia,
University Washington,
University Wisconsin,

Upjohn,
UPS,
US Air Force,
US Army,
US Army Central Command,
US Army Corps Engineers,
US Army Europe Commander,
US Army JAG Corps,
US Bankruptcy Court,
US Coast Guard,
US Datacomm,
US Dept Agriculture,
US Dept Commerce,
US Dept Defense,
US Dept Education,
US Dept Energy,
US Dept Justice,
US Dept National Health,
US Dept Social Security,
US Dept Treasury,
US Dept Veterans Affairs,
US District Court Alabama,
US District Court Minnesota,
US District Court South Carolina,
US Environmental Protection Agency,
US Executive Office Of President,
US Federal Election Commission,
US General Services Administration,
US Geological Survey,
US Joint Forces Command,
US Marine Corp,
US Money Reserve,
US National Park Service,
US Navy,
US Pentagon,
US Postal Services,
US Small Business Administration,
US Veterans Admin Medical Centers,
Utica First Insurance,
Valencia Group,
Vantage Laboratories,
Vatican Radio,
Vedder Price,
Ventiv Health US Sales,
Verizon,
VersaCold,
Victorias Secret,
Virginia Dept Transportation,
Virginia Farm Bureau,
Vivodi Telecommunications,
Vonage,
Walla Walla Union Bulletin,
Warner Lambert,
Washington Capital Management,
Washington State Admin Office Courts,
Washington State Dept Revenue,
Washington State Dept Transportation,
Washington State University,
Washington Trust Bank,
WB Mason,
Wear Me Apparel,
WearGuard,
Westaff,
Western Gas Resources,
Westlake Realty Group,
Whitehead Institute,
Wide Horizon For Children,
Widener University,
Willkie Farr & Gallagher,
Xavier University,
XM Satellite Radio,
Yang Ming America,
Yahoo,
Zenith,
& Many, Many Others...



What are Digital vs Switch Sensors?

Digital Sensors are those that monitor in real-time to provide digital values that can be viewed through a web or application interface, passed in alert notifications or logged for creating charts and graphs. Common digital sensors include Temperature, Outdoor Temperature, Fluid Temperature, and Temperature & Humidity.

Switch Sensors are those that do not provide real-time values and instead present their real-time status as being in or out of a specific state (i.e. on / off, make / break, open / closed). These sensors have a built-in circuit that changes status as a threshold is passed, indicating an alarm condition.

Digital Temperature Sensor

BEST SELLER



TMP-SDT-SEN
TMP-DT50-SEN
TMP-DT100-SEN

- Real-time temperature sensor.
- Temperature range: -67 – 257° F, -55 – 125° C.
- Compatible with Room Alert 32E/W, 26E/W, 24E, 12E, 11E, 7E, 4E, 3E, 3W, TemPageR 4E & 3E, 3W, WiSH & WiSPR.
- Options include sensor with attached cables of 25', 50' and 100' length. Max cable distance is 100'.

INCLUDES: Digital Temperature Sensor With 25' RJ-11 Cable & Installation Note.

Digital Outdoor Temperature Sensor

OUTDOOR



TMP-DOT-SEN
TMP-DOT50-SEN
TMP-DOT100-SEN

- Real-time temperature sensor.
- Temperature range: -67 – 257° F, -55 – 125° C.
- Silicon coating offers extra resilience for monitoring outdoors or in other harsh environments.
- Compatible with Room Alert 32E/W, 26E/W, 24E, 12E, 11E, 7E, 3E, 3W, TemPageR 4E & 3E, WiSH & WiSPR.
- Options include sensor with attached cables of 25', 50' and 100' length. Max cable distance is 100'.

INCLUDES: Digital Outdoor Temperature Sensor With 25' RJ-11 Cable & Installation Note.

Digital Fluid Temperature Sensor

LAB READY



TMP-DFT-SEN
TMP-DFT50-SEN
TMP-DFT100-SEN

- Real-time fluid temperature sensor.
- Temperature range: -67 – 257° F, -55 – 125° C.
- Perfect for cooler or freezer monitoring of food, medicines and fluid temperature.
- Compatible with Room Alert 32E/W, 26E/W, 24E, 12E, 11E, 7E, 4E, 3E, 3W, TemPageR 4E & 3E, WiSH & WiSPR.
- Options include sensor with attached cables of 25', 50' and 100' length. Max cable distance is 100'.

INCLUDES: Digital Fluid Temperature Sensor With 25' RJ-11 Cable & Installation Note.

Digital Temperature & Humidity Sensor

BEST SELLER



RMA-DTH-SEN
RMA-DTH50-SEN1
RMA-DTH100-SEN

- Real-time temperature and humidity sensor.
- Temperature range: -67 – 257° F, -55 – 125° C.
- Relative humidity range: 5 to 95% non-condensing.
- Compatible with Room Alert 32E/W, 26E/W, 24E, 12E, 11E, 4E, 3E, 3W, WiSH & WiSPR.
- Options include sensor with attached cables of 25', 50' and 100' length. Max cable distance is 100'.

INCLUDES: Digital Temperature & Humidity Sensor With 25' RJ-11 Cable & Installation Note.

Digital Temperature & Analog Sensor

NEW



RMA-DTA-SEN

- Real-time temperature and analog sensor port.
- Temperature range: -67 – 257° F, -55 – 125° C.
- Outputs 0 - 5 VDC in real-time to analog sensor.
- By connecting an external analog sensor, such as a Current Loop, the user can track efficiency.
- Max sensor cable distance up to 100', includes 25'.
- Compatible with Room Alert 32E/W, 24E, 12E, 4E, 3E & 3W.

INCLUDES: Digital Temperature & Analog Sensor With 25' RJ-11 Cord & Installation Note.

Main Power Sensor

BEST SELLER



RMA-PS1-SEN

- Real-time main power on/off status.
- Monitors main, UPS or single phase power.
- Max sensor cable distance up to 900', includes 25'.
- Compatible with Room Alert 32E/W, 26E/W, 24E, 12E, 11E, 7E, 4E, 3E, 3W, WiSH & WiSPR.

INCLUDES: Main Power Sensor With 25' Cable, 5V Power Adapter & Installation Note.

Mini UPS & Power Sensor (MUPS)

BEST VALUE



RMA-MUPS-SEN

- Real-time main power on/off status.
- Monitors main, UPS or single phase power.
- Provides battery backup power for 15 minutes or more for any 5V device.
- Max sensor cable distance up to 900', includes 25'.
- Plugs in-line with AVTECH's 5V Power Adapter.
- Compatible with Room Alert 32E/W, 26E/W, 24E, 12E, 11E, 7E, 4E, 3E, 3W, WiSH & WiSPR.

INCLUDES: Mini UPS & Power Sensor With 25' Cable & Installation Note.

* More Sensors, Cameras, Packages & Accessories Online.

BEST SELLER

Flood Sensor w/8' Cable



RMA-F008-SEN

- Real-time recognition of water/flood anywhere along the length of the patented flood cable.
- 8' Flood Cable with 25' RJ-11 leader cable.
- Alert triggered when sensor is activated or power lost.
- Flood cable can be extended by 8' lengths.
- Compatible with Room Alert 32E/W, 26E/W, 24E, 12E, 11E, 7E, 4E, 3E, 3W, WiSH & WiSPR.

INCLUDES: Flood Sensor With 8' Flood Cable & 25' RJ-11 Leader Cable, 25' Sensor Cable, 5V Power Adapter, Mounting Screws & Installation Note.

Flood Sensor 8' Cable Extension



RMA-008CE-SEN

- Real-time recognition of water/flood anywhere along the length of the patented flood cable.
- Can be extended by adding additional 8' extensions.
- Designed to extend the length of the AVTECH Flood Sensor Cable to several hundred feet.
- **Requires connection in-line between AVTECH's Flood Sensor (internal on Room Alert 26E/W) and Flood Sensor Cable.**

INCLUDES: 8' Flood Cable Extension & Installation Note.

BEST VALUE

Flood Sensor w/24' Cable



RMA-F024-SEN

- Real-time recognition of water/flood anywhere along the length of the patented flood cable.
- 24' Flood Cable with 25' RJ-11 leader cable.
- Alert triggered when sensor is activated or power lost.
- Flood cable can be extended by 8' lengths.
- Compatible with Room Alert 32E/W, 26E/W, 24E, 12E, 11E, 7E, 4E, 3E, 3W, WiSH & WiSPR.

INCLUDES: Flood Sensor With 24' Flood Cable & 25' RJ-11 Leader Cable, 25' Sensor Cable, 5V Power Adapter, Mounting Screws & Installation Note.

HEAVY DUTY

Flood Sensor (Spot)



RMA-FS2-SEN

- Real-time recognition of flood/water under pod.
- Specially designed to interface with Room Alert.
- Powered by 9V Alkaline battery (included).
- Max sensor cable distance up to 900', includes 25'.
- Compatible with Room Alerts 32E/W, 26E/W, 24E, 12E, 11E, 7E, 4E, 3E, 3W, WiSH & WiSPR.

INCLUDES: Flood Sensor (Spot) With 25' Cable, 9V Alkaline Battery & Installation Note.

NEW

Extreme Low Temperature Sensor



RMA-ET1-SEN

- Real-time low extreme temperature sensor.
- Temperature range: -328° – 32° F, -200° – 0° C
- Analog, 1-5 VDC.
- Sensor standardization Dn IEC 751 Class B.
- Compatible with Room Alert 32E/W, 12E & Digital Temperature & Analog Sensor.

INCLUDES: Extreme Temperature Sensor (High or Low), 10' Thermocouple Coil, 18V Power Adapter, 25' Speaker Wire Cable & Installation Note.

NEW

Extreme High Temperature Sensor



RMA-ET2-SEN

- Real-time high extreme temperature sensor.
- Temperature range: -40° – 743° F, -40° – 395° C
- Analog, 1-5 VDC.
- Sensor standardization Dn IEC 751 Class B.
- Compatible with Room Alert 32E/W, 12E & Digital Temperature & Analog Sensor.

INCLUDES: Extreme Temperature Sensor (High or Low), 10' Thermocouple Coil, 18V Power Adapter, 25' Speaker Wire Cable & Installation Note.

NEW

Current Loop 1 (0-50A)



RMA-CL1-SEN

- Monitors electrical current flowing through a single-phase powered cable.
- Monitor output: 0-10A, 0-20A & 0-50A.
- Connects via Room Alert Analog Sensor Port or Digital Temperature & Analog Sensor.
- Operates in 0 - 95% RH, non-condensing environment.
- Low-voltage 2-wire cable connection.
- Compatible with Room Alert 32E/W, 12E & Digital Temperature & Analog Sensor.

INCLUDES: Current Loop 1 With 25' Cable, Mounting Screws & Installation Note.

NEW

Current Loop 2 (0-250A)



RMA-CL2-SEN

- Monitors electrical current flowing through a single-phase powered cable.
- Monitor output: 0-100A, 0-200A & 0-250A.
- Connects via Room Alert Analog Sensor Port or Digital Temperature & Analog Sensor.
- Operates in 0 - 95% RH, non-condensing environment.
- Low-voltage 2-wire cable connection.
- Compatible with Room Alert 32E/W, 12E & Digital Temperature & Analog Sensor.

INCLUDES: Current Loop 2 With 25' Cable, Mounting Screws & Installation Note.

* More Sensors, Cameras, Packages & Accessories Online.

NEW

Water Tank Level Sensor



RMA-WTL1-SEN (NC)
RMA-WTL2-SEN (NO)

- Real-time recognition of water level rise or fall past an established level. Use to indicate leaks, flooding or need to refill water tank.
- Max sensor cable distance up to 900', includes 25'.
- Available in Normally Closed (NC) and Normally Open (NO) models.
- Compatible with Room Alert 32E/W, 26E/W, 24E, 12E, 11E, 7E, 4E, 3E, 3W, WiSH & WiSPR.

INCLUDES: Water Tank Level Sensor With 25' Cable & Installation Note.

NEW

Fuel Tank Level Sensor



RMA-FTL1-SEN (NC)
RMA-FTL2-SEN (NO)

- Real-time recognition of fuel level rise or fall past an established level. Use to indicate leaks, overfill or need to refill fuel tank.
- Max sensor cable distance up to 900', includes 25'.
- Available in Normally Closed (NC) and Normally Open (NO) models.
- Compatible with Room Alert 32E/W, 26E/W, 24E, 12E, 11E, 7E, 4E, 3E, 3W, WiSH & WiSPR.

INCLUDES: Fuel Tank Level Sensor With 25' Cable & Installation Note.

BEST SELLER

Air Flow 1 Sensor (NC)



RMA-AF1-SEN

- Real-time recognition of air flow stop/start.
- Use in HVAC duct, under raised floors, or near fan.
- Max sensor cable distance up to 900', includes 25'.
- Recommended for IT installations.
- Compatible with Room Alert 32E/W, 26E/W, 24E, 12E, 11E, 7E, 4E, 3E, 3W, WiSH & WiSPR.

INCLUDES: Air Flow 1 Sensor (Normally Closed) With 25' Cable & Installation Note.

Air Flow 2 Sensor (NO)



RMA-AF2-SEN

- Real-time recognition of air flow stop/start.
- Use in HVAC duct, under raised floors, or near fan.
- Max sensor cable distance up to 900', includes 25'.
- Compatible with Room Alert 32E/W, 26E/W, 24E, 12E, 11E, 7E, 4E, 3E, 3W, WiSH & WiSPR.

INCLUDES: Air Flow 2 Sensor (Normally Open) With 25' Cable & Installation Note.

Motion Sensor

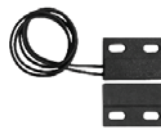


RMA-MOT2-SEN

- Detect motion up to approximately 35' with 84° angle.
- Alert triggered when sensor is activated.
- Powered by 12V power adapter (included).
- Max sensor cable distance up to 900', includes 25'.
- Compatible with Room Alert 32E/W, 26E/W, 24E, 12E, 11E, 7E, 4E, 3E, 3W, WiSH & WiSPR.

INCLUDES: Motion Sensor With 25' Cable, 12V Power Adapter & Installation Note.

Room Entry Sensor



RMA-RE1-SEN

- Easy recognition of door/cabinet open or closed status.
- Standard use on door or window and adjoining frame.
- Max sensor cable distance up to 900', includes 25'.
- **Requires connection to Sound, Light & Entry (SLE) unit for alert on momentary status change.**
- Compatible with Room Alert 32E/W, 26E/W, 24E, 12E, 11E, 7E, 4E, 3E, 3W, WiSH & WiSPR.

INCLUDES: Room Entry Sensor With 25' Cable & Installation Note.

HEAVY DUTY

Panic Button 1



RMA-PB1-SEN

- Designed to be used as an emergency alarm to provide warning where someone is working and may need help or conditions reach an alarm state.
- Palm or foot size, locks in place, pull to release.
- NEMA rated for weather and industrial use.
- Compatible with Room Alert 32E/W, 26E/W, 24E, 12E, 11E, 7E, 4E, 3E, 3W, WiSH & WiSPR.

INCLUDES: Panic Button 1 With 25' Cable & Installation Note.

Smoke Sensor w/Escape Light



RMA-SS1-SEN

- Real-time recognition of smoke or fire.
- Audible alert and 'escape' light is triggered when sensor is activated due to smoke or fire.
- Powered by 9V Alkaline battery (included).
- Max sensor cable distance up to 900', includes 25'.
- Compatible with Room Alert 32E/W, 26E/W, 24E, 11E, 7E, 4E, 3E, 3W, WiSH & WiSPR.

INCLUDES: Smoke Sensor w/Escape Light, 25' Cable, 9V Alkaline Battery, Mounting Screws & Installation Note.

* More Sensors, Cameras, Packages & Accessories Online.

POPULAR

Light Tower w/Audio **



ST-RYG-LT

- Light Tower lights turn on when alarms are detected (i.e. pings fail, high temps, room entry, etc.).
- Lights turn on/off via SNMP set, URL & interactively via AVTECH's Device Manager software.
- Adjustable audio alarm with intensity range of 0 to 95 dB (at 1m).
- Includes 15' Light Cable; 25' Extension Cable available.
- **Room Alert 32E/W, 12E & 3E require LT-32-ADP.**
- Compatible with Room Alert 32E/W, 12E, 4E & 3E.

INCLUDES: Light Tower w/Audio, Red, Yellow & Green Lights, 15' Cable, Mounting Bracket & Installation Note.

Relay Switch Sensor (Low Voltage) **



RMA-RELAY-SEN

- Allows low voltage devices to be turned on/off.
- Three (3) device relays with visible relay status lights.
- One (1) general alarm relay for connection to alarm panel/box.
- Each relay supports 0.3A at 125VAC or 1A at 24VDC.
- **Room Alert 32E/W, 12E & 3E require LT-32-ADP.**
- Compatible with Room Alert 4E directly.

INCLUDES: Relay Switch Sensor With 25' Cable & Installation Note.

25' Light Tower w/Audio Extension



ST-025G2-CAB

- Designed to extend the length of AVTECH's Light Tower w/Audio.
- Cab be extended by adding additional 25' extensions. Maximum extension length is 100'.
- Requires a connection in-line between AVTECH's Light Tower w/Audio and Room Alert 32E/W, or 4E environment monitors.
- Compatible with Light Tower w/Audio ONLY.

INCLUDES: 25' Light Tower Extension Cable & Installation Note.

Light Tower & Relay Adapter **



LT-32-ADP

- **Required to connect the Light Tower, Light Tower w/Audio or Relay Switch Sensor to AVTECH's Room Alert 32E/W, 12E or 3E.** Allows Light Tower, Light Tower w/Audio or Relay Switch Sensor installs up to 100' away from Room Alert ID box via RJ-11.
- Includes one (1) relay that can be used to turn on/off low voltage devices automatically in response to an alarm condition and separate 5V power supply.
- The relay supports 0.3A at 125VAC or 1A at 24VDC.

INCLUDES: Light Tower & Relay Adapter, 25' RJ-11 Cable, 5V Power Adapter & Installation Note.

BEST SELLER

GSM Modem w/USB Connect



MOD-GSM-1

- Immediate connectivity to any GSM/GPRS network.
- Controlled via AT&T commands.
- Use with AVTECH's Dial Out Plugin and Device Manager software to trigger modem to dial out to any GSM network and send your alert generated by Room Alert, TemPageR or Axis camera.
- **Requires PC with USB.**
- Compatible with AVTECH's Device Manager software.

INCLUDES: AirLink GL 6110 GSM Modem w/USB Connect, 8' USB Connection Cable, FME Antenna & Installation Note.

Sound, Light & Entry Sensor (SLE)



RMA-SLE-SEN

- Real-time recognition of sound, light and/or entry. Includes external Room Entry Sensor (\$25 value).
- Specially designed to interface with Room Alert.
- Max sensor cable distance up to 900', includes 25'.
- **Required for alerting on momentary status changes of Room Entry Sensor (i.e. instant open/close).**
- Compatible with Room Alert 32E/W, 26E/W, 24E, 12E, 11E, & 7E.

INCLUDES: Sound, Light & Entry Sensor With 25' Cable, Room Entry Sensor, 5V Power Adapter & Installation Note.

Power Over Ethernet Active Splitter



POE-ADP-01

- Allows easy integration of Power over Ethernet (PoE) for a non PoE enabled Room Alert monitor.
- Use with a non PoE Room Alert monitor on a PoE enabled network.
- Active Splitter supports 10/100BaseT.
- Compatible with Room Alert 26E/W, 24E, 11E, 7E, 4E, TemPageR 4E, 3E, WiSH & WiSPR.

INCLUDES: PoE Ethernet Active Splitter (5V, RoHS), 2 Adapter Cables & Installation Note.

Power Over Ethernet Midspan Injector



POE-INJ-01

- Allows easy integration of Power over Ethernet (PoE) for a PoE enabled Room Alert monitor.
- Use in-line with a PoE powered Room Alert monitor when a network is not PoE enabled.
- Midspan Injector supports 10/100BaseT.
- Compatible with Room Alert 32E/W, 12E & 3E

INCLUDES: PoE Midspan Injector (5V, RoHS), Power Cable & Installation Note.

* More Sensors, Cameras, Packages & Accessories Online.

** Room Alert 32E/W, 12E & 3E require use of LT-32-ADP.

Device ManageR™ 6.3

Environmental Monitoring
with **Room Alert®** Just Got Easier



- Complete Windows OS Update
- Web Server Upgrade
- Database Server Upgrade
- Network Service Monitors
- New Features, Improvements & More



AVTECH's **Device ManageR™** is included FREE with the purchase of any **Room Alert®** monitor and is the all-in-one solution for managing, monitoring, alerting, logging, graphing, corrective action and more of AVTECH monitors network-wide.

This important new version brings AVTECH's powerful management software to new heights. It features enhancements that make Device ManageR an invaluable tool in any physical environment monitoring program. Some of the newest features include:

- **Dashboard View** - This new look allows users to configure an unlimited number of 'Widgets' that display summary and priority information. Different users can create their own unique interface, meeting their unique needs.
- **Widgets** - Widgets are available for graphs that update with current sensor values, tables that show values such as Average, Max and/or Min or selected sensors, tables showing the 'Top 5 Devices' with alerts, and much more.
- **Automatic Push Technology** - Alert recognition and set-up is faster with new 'Push' technology as AVTECH monitors can send immediate notification to Device ManageR when sensors trip or events occur.
- **Improved Alert Editing** - Creating and editing custom alert notification messages is improved. New fields have been added and moved to a larger stand-alone window making it easier to view and edit.
- **Query Extended Service & Support Status** - View the expire dates for your GoToMyDevices subscription through Device ManageR. Automate upcoming or pending service renewals to make sure that all the important benefits are provided to you. Renew to extend your service at any time by paying online at your convenience.
- **Advanced Plugins** - Expand your capabilities with easy-to-use Plugins to allow automated actions and response: [Windows Bundle](#), [Dial Out Bundle](#), [Report Generator](#), [Unix/Linux Bundle](#) or the [Super Bundle](#) package.

There are an abundance of other enhancements and improvements in the new Device ManageR. You can find the full release notes in AVTECH's online Support section.

Device ManageR is a powerful tool that allows managers and staff to know that their valuable equipment or facility is monitored and protected. Visit AVTECH's [Downloads](#) page today to update to the current version of Device ManageR. Get the most out of your environment monitoring equipment by using this FREE software.

Protect Your Facility... *Don't Wait Until It's Too Late!*

Thank You!

The AVTECH Team



Device ManageR
It's Awesome!
Follow Us On Twitter
To Be Notified Of
Major Releases.

* Remember that a current GoToMyDevices subscription is required for download access of all new firmware, software, and MIBs.

Device ManageR™

Multi-Unit Interface For AVTECH Monitors & Axis Cameras...

Network-Wide!

Advanced Software For Discovery, Management, Logging, Graphing, Alerting & More

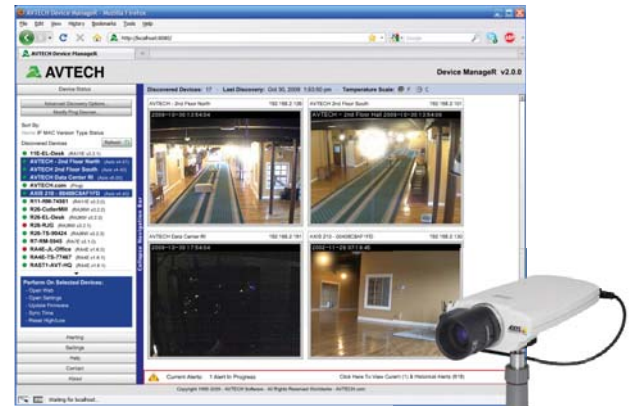
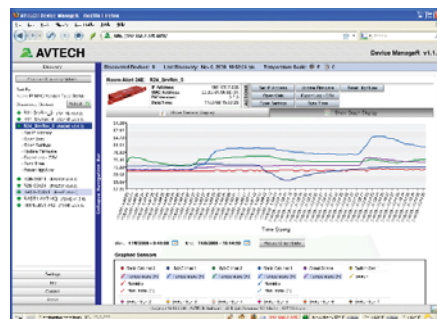
Knowing immediately when an issue or event occurs in your data center or other important facility could save your organization from disaster. **Device ManageR™** is an all-in-one solution for the discovery, management, logging, graphing, alerting and more of AVTECH's 'IT & Facilities Environment Monitoring' hardware. Complete with its unique range of features, Device ManageR runs as a Windows Service and is ideal for managing single units or a multi-unit deployment via its web interface. Device ManageR automatically discovers units across the network and allows users to immediately be informed when environmental thresholds are passed (i.e. temperature too hot, power loss, humidity too high, water leak, etc.). Alerts are sent via email to mobile devices such as computers, tablets, mobile phones, and other mobile devices.



Being able to view real-time sensor data in a single screen is important to save time and expenses. Device ManageR's web browser interface allows users to view and manage any or all monitors through a single web interface, accessible from anywhere network-wide. Through a single IP address, users can

view, graph and log sensor data in real-time, or over a specified date range, for one or multiple units, graphs displayed are automatically refreshed allowing users to see exactly what is happening in real-time. All sensor data is stored in an SQL database limited only by disk space. This is an invaluable tool when it comes to comparing data, reporting, or forecasting future needs for planning. Sensor data can be easily exported to CSV, Excel, or for use with an external database.

Device ManageR also has the ability to discover any Axis™ network camera and acts as a single interface for viewing camera images for multiple cameras distributed across the network. Cameras can be set up to sense motion or audio and then alert staff through Device ManageR when sensors are triggered. Users can view one camera at a time or call up a summary to view multiple cameras network-wide through a single web page. Users can store images for future reference and forward links to camera images within alerts. Contact your favorite Reseller or an AVTECH Product Specialist to learn more about this powerful software.



- Web Browser Interface For Remote Monitoring
- Auto Discovery Of AVTECH Monitors & Axis Cameras
- Setup & Configuration Of AVTECH Monitors
- View Sensor Data For Multiple Units Simultaneously
- Log, Graph & Export Historical Sensor Data
- View Multiple Axis Camera Displays Simultaneously
- Send Alerts When Sensor Thresholds Are Passed
- Monitor & Manage Unlimited Units Network-Wide Through A Single IP Address Or Web Page
- Network-Wide Discovery Using UDP Broadcast
- Automatic Discovery Even Across Different Subnets
- Unlimited Data Logging To An Embedded SQL Database With No Limits Other Than Disk Space
- Sensor & Data Graphing On Screen In Seconds... Allows Comparison Of Sensors Side-By-Side
- Monitor Network Devices Across Your Network
- Runs As A Windows Service For Security, Allows Multi-User Access Via Network, Using The Web Browser Of Your Choice
- Auto Discovery Of Out-Of-Date Firmware
- Upgrade Firmware For One Or Multiple Monitors Simultaneously Across The Network
- Copy Configuration Settings To One Or Multiple Monitors Simultaneously Across The Network
- Hardware Monitor Pictured In Settings Screen
- Supports Schedules, Alerts & Corrective Actions
- **Bundled With Every Room Alert Monitor!**

FREE
Software
License

Contact **OPENXTRA** • Phone **+44 1943.465.918** • Email **Info@OPENXTRA.co.uk**

Plugin Bundles For Device *ManageR*™

Easy-To-Use Plugins Enhance The Capabilities Of AVTECH's Device ManageR

Plugin - Windows Bundle (Shutdown, Reboot, Log Off & Script) ADM-WINB-PAS

- **Shutdown Windows Systems Remotely Across The Network.** When used with the Device ManageR, this plugin can perform a forced power-down of target systems. Use it to shutdown an unlimited number of Windows systems across the network... individually, in groups, simultaneously, sequentially or according to a schedule. Shutdown systems both automatically without user interaction or interactively from anywhere to save equipment from damage due to extremes.
- **Reboot Windows Systems Remotely Across The Network.** When used with Device ManageR this plugin will perform a forced reboot of the target system. Use it to reboot an unlimited number of Windows systems across the network... individually, in groups, simultaneously, sequentially or according to a defined schedule. Monitoring a system or device via a Ping Object? Use the 'Reboot Action' to restore the service being monitored if/when it stops responding.
- **Log Off Windows Systems Remotely Across The Network.** When used with Device ManageR, this plugin will perform a forced log off of the target system. Use it to log off an unlimited number of Windows systems across the network... individually, in groups, simultaneously, sequentially or according to a defined schedule. Issue log off responses for security, to manage power consumption or more from anywhere in the world by using Device ManageR's easy-to-use web browser interface.
- **Execute Windows Commands, Batch Files Or VBScripts.** When used with Device ManageR this plugin will allow users to execute Windows commands, batch files or VBScripts when alerts are detected. Each instance of the Windows Scripting action will be able to perform one method at a time, however, there are no limits on the number of instances that can be created.
- **Perform Windows Audible Actions.** When used with Device ManageR, this plugin will allow users to automatically speak alert text or play a sound file over the Device ManageR host system's sound card as an alert notification. Use the plugin to notify managers and staff immediately when events occur or issues are resolved, especially effective when users leave their smart phones at their desks.



CALL

Plugin - Dial Out Bundle (GSM, Text & Voice) ADM-DOB-PAS

- **Send Text Messages To Mobile Devices Via A GSM Modem Or Phone.** This plugin action will use a GSM modem or phone connected to the Device ManageR host system to send a text message via satellite to configured contacts when issues or events occur across the network. Use it to send text messages to an unlimited number of contacts... individually, in groups, simultaneously, sequentially or according to a defined schedule. Send notifications both automatically and immediately to save equipment from environment extremes.
- **Send Text Messages To Mobile Devices Through A Modem Via TAP Service, Or Dial A Phone Directly To Play Dial Tones.** This plugin can be used to call/text an unlimited number of phones... individually, in groups, simultaneously, sequentially or according to a defined schedule. Receiving phones that are 'non-text enabled' can set a customized description or name for the dial out line for easy identification, such as 'Device ManageR' or 'Data Center Alert'. Send notifications both automatically and immediately to save equipment from environment extremes.
- **Call And Play Audio Messages To Mobile Devices Via A GSM or Voice Modem.** This plugin can be used to dial a phone directly and play voice messages to an unlimited number of phones... individually, in groups, simultaneously, sequentially or according to a defined schedule. Send notifications both automatically and immediately to save equipment from environment extremes. Great for 'non-text enabled' phones.



CALL

Plugin - Report Generator ADM-REP-PAS

Automatically Generate And Email Scheduled Status Reports. When used with Device ManageR, this plugin allows users to schedule and send email to configured contacts with status updates and advanced statistics on all or select discovered devices (i.e. Room Alert), alerts detected by Device ManageR and more. View and print status and/or statistics for selected environmental sensors within computer rooms, data centers, and other facilities. Keywords are available that allow users to insert real-time values for the number of alerts in progress, number of alerts designated time period, number of devices discovered, current sensor readings and much more. An unlimited number of reports can be created, allowing users the flexibility to create different reports for different contact, or to generate reports according to different schedules (i.e. periodic, daily, weekly or monthly report) or different facilities.



CALL

Plugin Bundles For Device *ManageR*™

Easy-To-Use Plugins Enhance The Capabilities Of AVTECH's Device ManageR

Plugin - Unix / Linux Bundle (Report, Windows, Unix / Linux, Dial Out) ADM-UNLB-PAS

- **Shutdown Unix / Linux Systems Remotely Across The Network.** When used with Device ManageR, this plugin can perform a forced power-down of the target system. Use it to shutdown an unlimited number of Unix/Linux systems across the network... individually, in groups, simultaneously, sequentially or according to a defined schedule. Shutdown systems both automatically without user interaction or interactively from anywhere to save equipment from damage due to environment extremes.
- **Reboot Unix / Linux Systems Remotely Across The Network.** When used with Device ManageR, this plugin will perform a forced reboot of the target system. Use it to reboot an unlimited number of Unix/Linux systems across the network... individually, in groups, simultaneously, sequentially or according to a defined schedule. Monitoring a system or device via a Ping Object? Use the 'Reboot Action' to restore the service being monitored if/when it stops responding.
- **Execute Unix / Linux Commands.** When used with Device ManageR, this plugin will allow users to execute Unix/Linux commands when alerts are detected. This action will be able to perform the configured command on the target system by connecting directly via Telnet.



CALL

Plugin - Super Bundle (Shutdown, Reboot & Commands) ADM-SUPB-PAS

**BEST
VALUE**

- **Plugin - Report Generator.** With this plugin, users can automatically generate and email reports for some or all environmental conditions within their computer rooms, data centers and other facilities. Keywords are available that allow users to insert values for the number of alerts in progress, number of alerts in a designated time period, number of devices discovered, current sensor readings and much more. An unlimited number of reports can be created, allowing users the flexibility to create different reports for different contacts, or to generate reports according to different schedules (i.e. periodic, daily, weekly or monthly report, and for one, select or all devices).
- **Plugin - Windows Bundle (Shutdown, Reboot, Log Off, Script & Audible Action).** When used with Device ManageR this plugin package allows users to shutdown, log off or reboot Windows systems remotely across the network and/or perform Windows Scripting such as the execution of Windows commands, batch files or VBScripts, when alerts are detected. Each instant of the Windows Scripting action will be able to perform one method at a time, however, there are no limits on the number of instances that can be created. Users can also use audible actions to speak alert text or play sound files over the Device ManageR host systems sound card. Perform these actions for an unlimited number of Windows systems across the network... individually, in groups, simultaneously, sequentially or according to a defined schedule. Execute interactively from anywhere via a web browser.
- **Plugin - Unix / Linux Bundle (Shutdown, Reboot & Commands).** When used with Device ManageR this plugin package will allow users to shutdown and/or reboot Unix/Linux commands remotely across the network. When an alert is detected, this action can perform a forced power-down or reboot of the target system by connecting directly to the system via Telnet. Shutdown, reboot or set commands for an unlimited number of Unix/Linux systems across the network... individually, in groups, simultaneously, sequentially or according to a defined schedule.
- **Plugin - Dial Out Bundle (GSM, Text & Voice).** When used with Device ManageR this plugin package will allow users to send out text messages via a GSM modem, use a TAP service to send out text messages, dial a phone directly and play dial tones, and/or to dial a phone directly and speak alert text as a voice message. Send messages to an unlimited number of contacts... individually, in groups, simultaneously, sequentially or according to a defined schedule.



CALL

Plugins for AVTECH's Device *ManageR*™ application enhance the capabilities, ease-of-use and overall user experience of working with Room *Alert*® monitors.

Get the most out of environment monitoring with a complete solution.

Contact **OPENXTRA** • Phone **+44 1943.465.918** • Email **Info@OPENXTRA.co.uk**

Environmental Monitoring Without The Need To Plug In To The Network

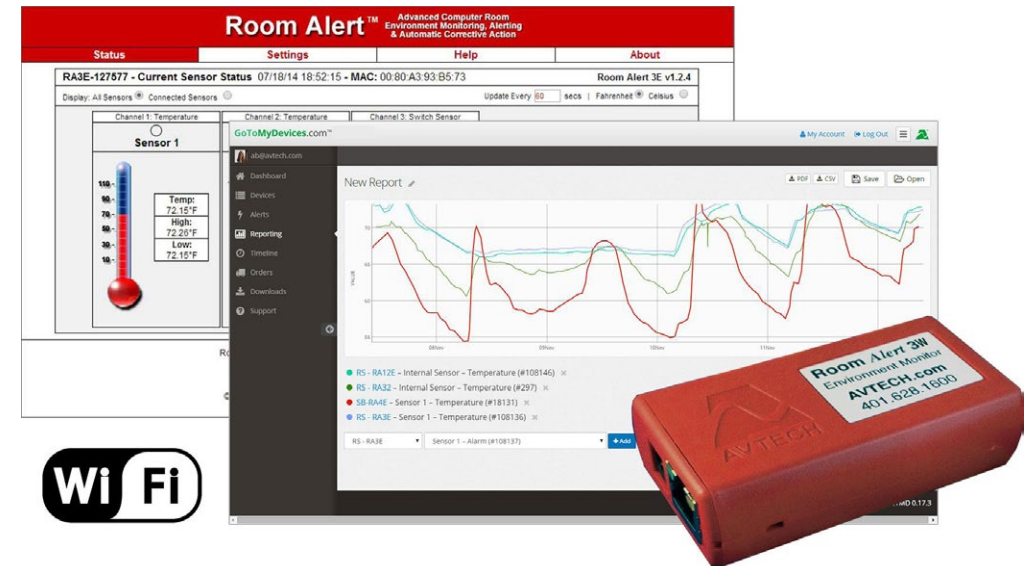
New AVTECH Room Alert 3 Wi-Fi Monitor Expands Environmental Monitoring To New Markets

AVTECH SOFTWARE'S new Room Alert 3 Wi-Fi marks the latest in the company's long line of powerful and popular IT and facilities temperature and environment monitors.

AVTECH, which has been in business since 1988, now has more than 130,000 customers in 179 countries. Michael Sigourney, president and CEO, says this new Room Alert model will reach an even bigger audience because it eliminates the need to physically "plug in" to the network.

Small Footprint

The unique footprint and features of Room Alert 3 Wi-Fi make it perfectly designed to assist with monitoring temperature and other environmental conditions where a small footprint is needed, where a network connection may not exist, when the investment cost needs to be minimal, or



where deployment volume may be high.

With one digital temperature sensor built-in, users can expand monitoring by adding another digital sensor (i.e., temperature, humidity, outdoor and fluid temperature) as well as a switch sensor for conditions such as

flood/water, power, smoke/fire, airflow, and room entry/motion.

Room Alert 3 Wi-Fi is also the least expensive host for a light tower that can add visual/audio alerting or a relay switch sensor that can power up/down up to three other devices.

(www.GoToMyDevices.com) cloud service. New customers receive a one-year Personal subscription to GoToMyDevices at no charge.

Affordable Price Opens New Markets, Uses

Based on its ease of use and price of just \$175, Sigourney says, Room Alert 3 Wi-Fi can help bring temperature and environmental monitoring into markets that have previously been slow to adopt this technology. Key markets include medical, cold storage, housing, retail, food service, museums, public buildings, farming, transportation, warehousing, and distribution. AVTECH Room Alert 3 Wi-Fi is in production now and will ship by Feb. 28, 2015. P

Use Anywhere There's Wi-Fi

Room Alert 3 Wi-Fi has many benefits and can be used anywhere a Wi-Fi connection is available. There are no cables to run, so you can distribute Room Alert 3 devices around the world and monitor them all together on a single screen through AVTECH's Device Manager software (included free) or new GoToMyDevices

AVTECH Room Alert 3 Wi-Fi

- Ideal in areas that require a small footprint and have no network connection. Includes a built-in digital temperature sensor
- \$145 price makes it affordable to deploy or use in areas requiring a large number of devices

SPECIAL OFFER FOR PROCESSOR READERS: From now until March 31, purchase three Room Alert 3 Wi-Fi monitors at \$175 each, and you'll receive a fourth unit free (a \$175 value).



(888) 220-6700
Sales@AVTECH.com
Go to AVTECH.com and click Store