

With its integrated Android operating system, **Clevertouch Plus** is as easy to use as a tablet. Clevertouch Plus is the next generation of Clevertouch. Available in sizes 55", 65", 70", 75" and 84".



Clevertouch Plus 75" and 84"

75" Code: 1541015 | 84" Code: 1541005

The 75" and 84" Clevertouch Plus is the first in the world to offer an integrated Android operating system and true 4K solution. It features 10 touch points, 4K resolution and an optional Intel i7 4K PC with 1TB HDD, 8GB RAM and Windows 8 as standard.

Clevertouch Plus Blade PC

Optional Blade PC

75" and 84" 4K PC
Code: 1541013

- Intel® Core™ i7
- 4K
- 8GB RAM
- 1TB SATA HDD
- Integrated Intel® HD Graphics
- Intel H61 Express Chipset
- Bluetooth4.0
- WiFi
- Windows 8
- Includes a wireless keyboard and mouse

55-75" 1080p PC
Code: 1541003

- Intel® Core™ i5
- 4GB RAM
- 500GB SATA HDD
- Integrated Intel® HD Graphics
- Intel H61 Express Chipset
- Bluetooth4.0
- WiFi
- Windows 8
- Includes a wireless keyboard and mouse



4mm toughened safety glass.



True 4K* resolution with the 75" and 84".

Connectivity includes HDMI, VGA, RS232 and USB.

Widget lets you annotate over any app or document.

Clevertouch Plus now with 5 year on-site de-install/re-install warranty (UK mainland)

Freeze frame.

Narrow bezel and modern design.

Email out function allowing you to send files and images from the unit.

USB ports and key function buttons on the front of the screen make it easy for anyone to enter the room and present. Simply switch on and go with the ability to access files easily. The Plus has 2 Android front ports and one PC front port.

Integrated Full HD 1080p Android 4.2.1 with 1.5GB RAM and 8GB ROM.

Clevertnote Take notes, make pictures, and brainstorm.

Browser Browse the web straight from the Android system without a PC.

Finder Intuitive file browser helping you find your files, faster.

Widget Annotate over and capture anything on the screen.

Clevertstore The new app store exclusively available for Clevertouch Plus with free apps for education, business and general use. See next page for more details.



Clevertouch Plus comes with **two easy-grip pens** which are held onto the screen bezel magnetically.

All Clevertouch Plus models feature:

- HDMI, VGA, RS232 and USB Connectivity
- 10-point touch
- Integrated Speakers
- Integrated Android OS
- Integrated 8GB hard drive
- Optional Built-in PC
- No Shadow
- Five Year Warranty
- High Definition
- Anti Glare Glass
- Integrated Wi-Fi
- Low Power Consumption

CLEVERTOUCH

Clevertouch V-Series

Available in 55" and 65" the **V-Series** is the perfect value solution for a smaller budget with all the essential features of the Clevertouch Plus, but without the Cleverstore or apps.



10-point touch in PC mode with Windows 7/8 PC, 6-point touch in Android mode, 1-point touch with Mac OS

Touch-control menu for on screen input selection

Widget lets you annotate over any app or document.

Integrated speakers

Connectivity includes HDMI, VGA, RS232 and USB

V-Series
5 year on-site de-install/re-install warranty (UK mainland)

Full HD 1080p resolution with 720p Android resolution

Android 4.0.4 with **512MB RAM** and **4GB ROM**

Pre-installed Clevernote app for making notes and brainstorming

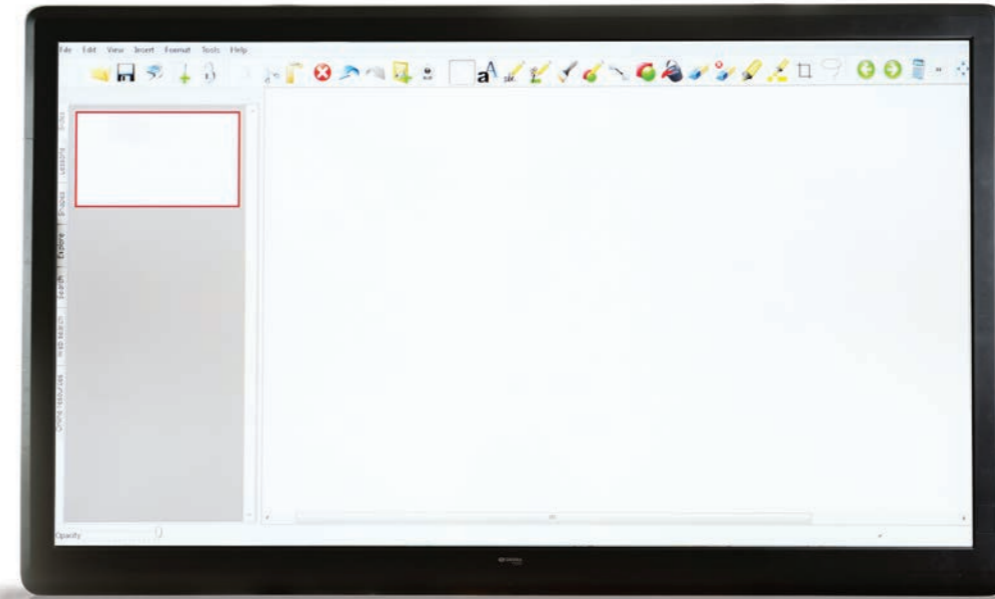
Front mounted USB ports – one for Android and two for PC

CLEVERLYNX CLEVERNOTE DisplayNote Snowflake

CLEVERTOUCH

Clevertouch C-Series

Our entry level Clevertouch **C-Series** – still feature-rich, without the need for an integrated OS



- Composite sleek design
- 6-point touch
- Available in 65"
- Toughened anti glare glass
- Freeze frame
- 3 year on-site de-install / re-install warranty (UK Mainland)



Contact us to discuss the wide range of accessories we have available



CLEVERSTORE

The Clevertouch Software Package

The **Clevertouch** Software package included with every Clevertouch

CLEVERLYNX

CleverLynx is a true multi-touch annotation software where you can import any type of document and make notes over it. The annotation toolkit includes pen, paintbrush, highlighter and fill area. Screen capture allows you to save these annotations. An image bank and wide variety of maps are available. Every Clevertouch includes a five user perpetual CleverLynx licence.

Find out more at www.cleverlynx.com



DisplayNote lets presenters and teachers control their Clevertouch with their tablet device or phone and share content from that Clevertouch, or from their device, with multiple participants on iOS, Android or computer. DisplayNote works via the Cloud or over a wireless network. Participants can capture the presenter's content on their device, annotate, add their own notes, collaborate with the group and save everything for review.

Every Clevertouch includes **10 perpetual DisplayNote connections** and 1 year free Cloud subscription. Multi connection licences are also available.

Find out more at displaynote.com



CLEVERNOTE

Clevernote annotation software is so easy to use, it requires no training—even young children can walk up to the screen and start annotating with our simple, intuitive interface. Change the background colour, pen colour and line size so that you can easily brainstorm, paint pictures or annotate.

Every Clevertouch Plus and V-Series includes our **Clevernote app**.

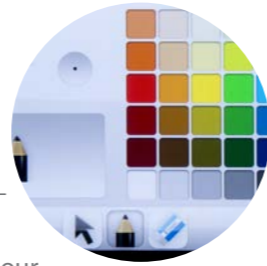


Snowflake MultiTeach consists of apps such as Match it, Ring Drop, Clock and other apps that help children develop good hand eye coordination skills. Learn about every day subjects such as maths, geography, grammar, spelling and biology. New features now allow the user to create their own activities.

Snowflake Business is a comprehensive selection of multi touch business tools. Share information and collaborate in meetings. Present your company image clearly, in engaging environments. Easy to use and customisable with your own branded content.

Every Clevertouch includes a single user licence with up to 5 PC activations.

Find out more at nuiteq.com



CLEVERSTORE

Cleverstore – the new app store exclusively available for Clevertouch Plus

Business apps

Modern offices are made up of collaborative areas and flexible multi-use zones. A touchscreen is the perfect device for these spaces as it is easy to use, requires no set-up or calibration, and can display a variety of files without the need to connect messy wires. Want to play a video or view images that were taken on your tablet or phone? Simply download the E-Share app on your device and stream directly to the **Clevertouch Plus**. With apps from DisplayNote, Olive Office, Adobe, Mind Meister, LectureNotes and WPS office, and with more apps being continuously added, the **Cleverstore** offers an unrivalled experience for business users.

Education apps

We have spoken to educators and looked over best app lists to source the most useful education apps on the market. The apps are ad-free, so teachers don't need to worry about inappropriate or distracting adverts popping up and interrupting the lesson. The apps that we have chosen are age and curriculum specific, with fun games and books for children, and interactive activities for secondary pupils. **Cleverstore** allows students to experience The Very Hungry Caterpillar in Full HD, access Wikipedia without the need for a PC, and send information directly from the front-of-class **Clevertouch** to their personal devices.



Product Code	1541020	1541008	1540510	1541019	1541009	1541010	1541018	1541015	1541005
Description	55" V-Series 1080p	55" Plus 1080p	65" C-Series 1080p	65" V-Series 1080p	65" Plus 1080p	70" Plus 1080p	75" Plus 1080p	75" Plus 4K	84" Plus 4K
Display									
Touch points	10	10	6	10	10	10	10	10	10
Screen type	LED	LED	LED	LED	LED	LED	LED	LED	LED
Aspect ratio	16:9	16:9	16:9	16:9	16:9	16:9	16:9	16:9	16:9
Resolution	Full HD	Full HD	Full HD	Full HD	Full HD	Full HD	Full HD	UHD 4K	UHD 4K
Brightness (cd/m2)	350	350	300	360	360	350	400	450	350
Audio	2x10w	2x10w	2x10w	2x10w	2x10w	2x10w	2x10w	2x10w	2x10w
Android	✓	✓	✗	✓	✓	✓	✓	✓	✓
Glass	Anti Reflective	Anti Glare	Anti Glare	Anti Reflective	Anti Glare	Anti Glare	Anti Glare	Anti Glare	Anti Glare
Connectivity									
CVBS	✓	✓	✗	✓	✓	✓	✓	✓	✓
VGA input	3	3	1	3	3	3	3	3	3
HDMI	3	3	2	3	3	3	3	4	4
PC-Audio	✓	✓	✓	✓	✓	✓	✓	✓	✓
R/L (CVBS)	With video IP	With video IP	✗	With video IP	With video IP	With video IP	With video IP	With video IP	With video IP
VGA output	✓	✓	✗	✓	✓	✓	✓	✓	✓
WAN (RJ45)	✓	✓	✗	✓	✓	✓	✓	✓	✓
RS232	✓	✓	✓	✓	✓	✓	✓	✓	✓
Warranty & Power									
Power consumption	<185W	<195W	<350W	<265W	<250W	<315W	<418W	<424W	<565W
Power consumption (in standby)	<0.5W	<0.5W	<1W	<0.5W	<0.5W	<0.5W	<0.5W	<0.5W	<0.5W
Warranty (on-site de/re UK)	5 year	5 year	3 year	5 year	5 year	5 year	5 year	5 year	5 year
Physical Specs									
Dimensions W x H x D (mm)	1303x820x98	1315x810x97	1562x960x110	1522x944x96	1545x942x104	1650x1004x111	1775 x 1056 x 101	1775x1056x101	1979x1193x108
Weight	46kg	50kg	65kg	46kg	72kg	73kg	88kg	88kg	118kg
VESA (mm)	600 x 400	400 x 400	600 x 400	600 x 400	600 x 400	400 x 400	600 x 600	600 x 600	600 x 600
Android Capabilities									
System Version	4.2.1 JellyBean	4.2.1 JellyBean	-	4.2.1 JellyBean	4.2.1 JellyBean	4.2.1 JellyBean	4.2.1 JellyBean	4.2.1 JellyBean	4.2.1 JellyBean
Android Chipset	608	6369	-	608	6369	6369	6369	6369	6369
Android Resolution	720p	1080p	-	720p	1080p	1080p	1080p	1080p	1080p
CPU	ARM Cortex A9 Dual Core	ARM Cortex A9 Dual Core	-	ARM Cortex A9 Dual Core	ARM Cortex A9 Dual Core	ARM Cortex A9 Dual Core	ARM Cortex A9 Dual Core	ARM Cortex A9 Dual Core	ARM Cortex A9 Dual Core
GPU	Quad Core	Quad Core	-	Quad Core	Quad Core	Quad Core	Quad Core	Quad Core	Quad Core
RAM	512MB	1.5GB	-	512MB	1.5GB	1.5GB	1.5GB	1.5GB	1.5GB
ROM	4GB	8GB	-	4GB	8GB	8GB	8GB	8GB	8GB
WiFi Enabled	✗	✓	-	✗	✓	✓	✓	✓	✓
Apps and Android features									
Clevertouch app	✓	✓	-	✓	✓	✓	✓	✓	✓
Email Out	✗	✓	-	✗	✓	✓	✓	✓	✓
Widget	✓	✓	-	✓	✓	✓	✓	✓	✓
Cleverstore	✗	✓	-	✗	✓	✓	✓	✓	✓
App Installation	✗	✓	-	✗	✓	✓	✓	✓	✓
Software									
Cleverlynx	✓	✓	✓	✓	✓	✓	✓	✓	✓
Snowflake	✓	✓	✓	✓	✓	✓	✓	✓	✓
DisplayNote	✓	✓	✓	✓	✓	✓	✓	✓	✓
Accessories									
Ability to use USB camera	✗	✓	✗	✗	✓	✓	✓	✓	✓
Magnetic Pen	✗	✓	✗	✗	✓	✓	✓	✓	✓
VGA, Audio cables	✓	✓	✗	✓	✓	✓	✓	✓	✓
HDMI, USB cables	✓	✓	✓	✓	✓	✓	✓	✓	✓