

॥ Jay Mataji ॥



The Sign of Success

Hydraulic Press Brake

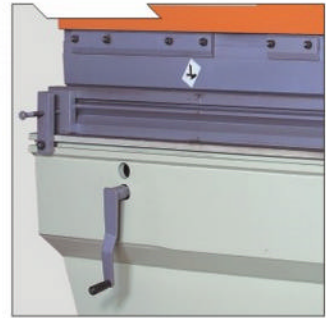


Hydraulic Press Brake



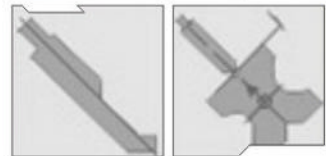
Hydraulic Press Brakes

Hydraulic Press Brakes are designed and developed through years of experience in sheet Metal working machines. Rajshakti hydraulic Press Brakes are developed by keeping latest technology in mind. both cylinders are mounted at back side of press brake and are synchronizes for parallelism between ram & table, by providing mechanical links connected with cylinder. The Heavy duty steel construction frame is so designed to absorb heavy shocks of overload all welding edges are properly machined for weld joints. The electric control panel is fixed on side wall at convenient place for easy reach of operator. It Includes push button pendant and foot switch. Standard "V" block & "V" Punch and manually operated back gauge system which is front operated are supplied as standard accessories. Hydraulic Components are of reputed make like Videkers, Rexroth, Dowty, Yiken Polyhydron etc.



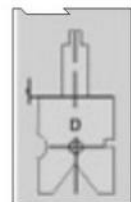
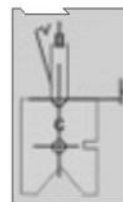
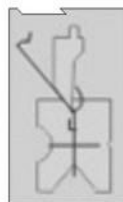
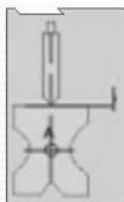
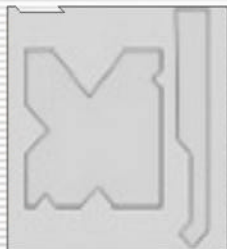
Standard Accessories

Electric Motor, Control Panel with selection of INCH -ONCE-AUTO Mode of operation. foot switch fine stroke Adjustment rod with limit Switches, Manual Lubrication, Instruction Manual.



Optional Accessories

Goose NECK Punch & Other tooling (Drawing required). Electronic Stroke Counter, NC Operated Back Gauge, Automatic Lubrication System



Hydraulic Press Brake - Technical Specification

Model	Tonnage	Table Length	Hydraulic Press brake Bending Capacity (In M.S. UTS) 450kg. / mm ²		Table Width	Clear Pass	Ram Stroke	Open Height	Throat Depth	Speed Approach Pressing Return	Power	Packing Dimensions (L x W x H)	Weight
			mm	mm									
RHPB215	20	1500	1.6 x 1500	2 x 1250	150	1060	100	250	100	35-9-35	2	1700x1050x1900	1500
RHPB320	30	2000	2 x 2000	3 x 1250	150	1550	100	250	200	30-7-30	3	2200x1150x1900	2500
RHPB425	40	2500	2 x 2500	3 x 1500	150	2055	100	250	200	40-8-40	3	2700x1150x1900	3000
RHPB515	50	1500	4 x 1500	5 x 1250	190	1050	100	250	200	35-7-35	5	1700x1050x1900	2500
RHPB520	50	2000	3 x 2000	4 x 1500	190	1550	100	250	200	35-7-35	5	2200x1050x1900	3200
RHPB525	50	2500	2.5 x 2500	3 x 2000	190	2055	100	250	200	35-7-35	5	2700x1050x1900	3500
RHPB625	65	2500	3 x 2500	4 x 2000	190	2055	150	330	200	30-5-30	5	2700x1200x2000	3700
RHPB630	65	3000	2.5 x 3000	3 x 2500	190	2540	150	330	200	30-5-30	5	3350x1200x2000	4300
RHPB825	80	2500	4 x 2500	5 x 2000	190	2055	150	330	200	38-6-45	7.5	2700x1550x2300	4500
RHPB830	80	3000	3 x 3000	4 x 2500	190	2540	150	330	200	38-6-45	7.5	3350x1550x2300	5000
RHPB1025	100	2500	5 x 2500	6 x 2000	190	2055	150	330	200	38-6-45	7.5	2700x1150x2300	5400
RHPB1030	100	3000	4 x 3000	5 x 2500	190	2540	150	330	200	38-6-45	7.5	3350x1550x2300	6200
RHPB1040	100	4000	3 x 4000	4 x 3000	190	3250	150	330	200	38-6-45	7.5	4250x1650x2300	7000
RHPB1225	125	2500	6 x 2500	8 x 2000	250	2055	150	350	300	38-5-40	10	2750x1650x2500	6500
RHPB1230	125	3000	5 x 3000	6 x 2500	250	2540	150	350	300	38-5-40	10	3350x1650x2500	7000
RHPB1240	125	4000	4 x 4000	5 x 3000	250	3250	150	350	300	38-5-40	10	4200x1650x2500	8300
RHPB1625	160	2500	8 x 2500	10 x 2000	230	2055	150	350	300	35-6-40	15	2750x1800x2600	8200
RHPB1630	160	3000	6 x 3000	8 x 2500	230	2540	150	350	300	35-6-40	15	3350x1800x2600	8800
RHPB1640	160	4000	5 x 4000	6 x 3000	230	3100	150	350	300	35-6-40	15	4350x2050x2750	9800
RHPB2025	200	2500	10 x 2500	12 x 2000	230	2055	200	400	300	35-7-35	20	2850x2050x2750	9500
RHPB2030	200	3000	8 x 3000	10 x 2500	230	2540	200	400	300	35-7-35	20	3350x2050x2750	10500
RHPB2040	200	4000	6 x 4000	8 x 3000	230	3100	200	400	300	35-7-35	20	4350x2050x2750	12500
RHPB2530	250	3000	10 x 3000	12 x 2500	300	2540	200	400	300	35-6-40	25	3350x2100x2800	12000
RHPB2540	250	4000	8 x 4000	10 x 3000	300	3100	200	400	300	35-6-40	25	4350x2100x2800	13500
RHPB3030	300	3000	12 x 3000	15 x 2500	300	2540	200	400	300	30-6-35	30	3350x2150x2900	12000
RHPB3040	300	4000	10 x 4000	12 x 3000	300	3100	200	400	300	30-6-35	30	4350x2150x2900	15000
RHPB4030	400	3000	16 x 3000	20 x 2500	300	2540	250	500	350	30-6-35	40	3350x2200x3000	18000
RHPB4040	400	4000	12 x 4000	16 x 3000	300	3100	250	500	350	30-6-35	40	4350x2200x3000	19500



BENDING FORCE CHART (Tonnes / Metre Length)		Capacity Based on Air Bending Mild Steel (U.T.S. 45 kg / mm)	
V	4 6 8 10 12 16 20 24 32 40 48 64 80 96 120 150 180 200 250 300		
H	3 4 6 7 8.5 11.5 14.5 17 23 29 34 46 57 68 85 110 130 145 180 215		
R	0.6 1.1 3.1 1.6 2 2.7 3.3 4 5.3 6.7 8 10.5 13.5 16 20 25 30 33 42 50		
S			
0.5	4 3 2		S - Sheet thickness mm R - Inside radius of bend H - Min. height of edge mm V - Vee/Die opening mm
0.8	16 6 6.5 5 4		
1	19 14 8 6 5		
1.2	14 12 10 8 6		
1.5	19 16 12 8 7		
2	38 26 22 16 12 10		
2.5	37 26 20 17 12		For M.S. Plates s < 12, min v = 8 x s
3	56 36 28 24 17 14 11		s > 12, min, v
4	74 56 44 32 25 20 16		
5	75 50 40 33 24 19		Higher tensile steels, v + 10 - 12 x s
6	77 57 48 35 27 23		
8	112 86 64 50 41 33		
10	150 100 80 60 51 43		
12	Bending pressures for other materials :	155 105 96 77 62 51	
15	Stainless steel - 160% of M.S.	180 150 120 96 80 72	
18	sof brass - 50% of M.S.	200 160 128 107 96 77	
20	Heat treated Al. Alloy - same as M.S.	250 200 170 150 120 100	
25	Values are only representative and varies for different bending condition	296 250 220 178 150	

POWER SUPPLY : 400 / 440 Volts, 3 Phase, 50 Cycle
 All dimensions are in mm. As day to day improvements are contemplated we reserve the right to change specification / design without prior notice.



RAJESH MACHINE TOOLS PVT. LTD.

Mfgr. & Exporter of :
 Hydraulic Shearing, Hydraulic Press Brake & Hydraulic Plate Bending Machine,
 Cross Shaft Press, Hydraulic Press, High Speed Press & All Types of Power Press,
 Mechanical Shearing, Mechanical Press Brake & Mechanical Plate Bending Machine

Works :
 Survey No. 215, Plot No. 4
 Opp. Maruti Oil Mill,
 Rajkot – Gondal Road Highway,
 Veraval (Shapar) Pin – 360 024
 Dist. Rajkot, Gujarat, India.

Customer Care : +91 - 95583 83833
 Telephone : +91 – 2827 296401 /02 /03
 Fax : +91 – 2827 – 252429

Website : www.rajshaktimachines.com
 Email : rmtpl_shapar@yahoo.com
 rmtpl_shapar1@yahoo.co.in