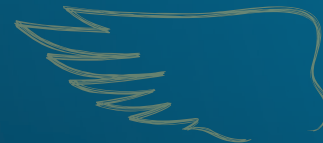




DK IMPRESSARIO CL

Registration Year 2015, Hungary
THE NEXT STEP IN CLEARFIELD



VIGOROUS ESTABLISHMENT



DOUBLE PHOMA RESISTANCE



POD SHATTER RESISTANCE

PRODUCT CHARACTERISTICS

EARLINESS AT REGROWTH	MID
EARLINESS AT FLOWERING	1 2 3 4 5 6 7 8 9
EARLINESS AT MATURITY	1 2 3 4 5 6 7 8 9
PLANT HEIGHT	1 2 3 4 5 6 7 8 9
LODGING RESISTANCE	1 2 3 4 5 6 7 8 9
STEM STIFFNESS	1 2 3 4 5 6 7 8 9
POD SHATTERING RESISTANCE	YES
PHOMA RESISTANCE	1 2 3 4 5 6 7 8 9
LIGHT LEAF SPOT RESISTANCE	1 2 3 4 5 6 7 8 9

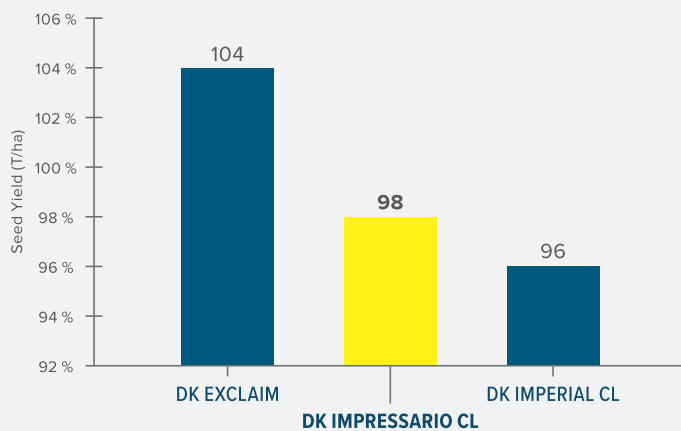
DEKALB Private Data – not directly comparable with other sources e.g. AHDB Recommended lists

VARIETY BENEFITS

- 1** Rapid-Autumn development growth habit - suitable for a range of sowing dates.
- 2** Specifically bred to combine Clearfield technology and DEKALB's yield protecting traits.
- 3** Pod Shatter Resistance

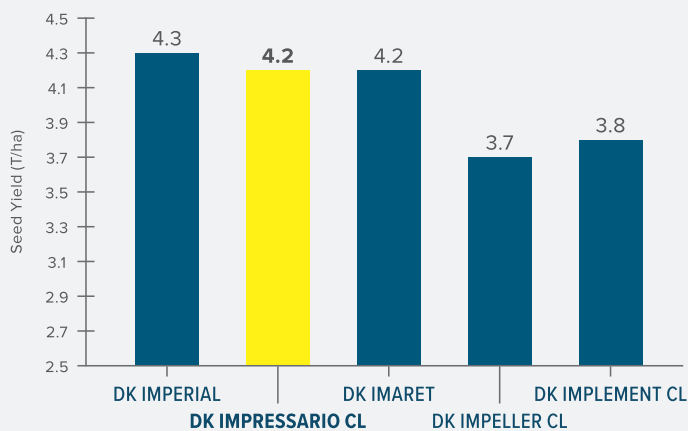
GROSS OUTPUT

DEKALB UK REPLICATED TRIALS HARVEST 2018



Source: Extract from DEKALB UK replicated MidFact Trials 2018 - 2 sites

UK UNTREATED TRIALS HARVEST 2017



Source: Extract from DEKALB UK Untreated Oilseed Rape Breeding trials 2017

Contact us at uk.dekalb@monsanto.com or learn more at dekalb.co.uk



DK IMPRESSARIO CL

Registration Year 2015, Hungary
THE NEXT STEP IN CLEARFIELD



KEY TRAITS



VIGOROUS ESTABLISHMENT

Proven ability to establish robust, well-rooted plants that are best able to cope with challenging UK conditions.



RAPID AUTUMN DEVELOPMENT

Rapid Autumn growth habit means that as well as being suitable for the main drilling window it can be the ideal variety for delayed drilling or less than ideal conditions.



DOUBLE PHOMA RESISTANCE

The combination of the RLM7 gene and Polygenic resistance provides outstanding, durable resistance to Phoma Stem Canker and flexibility in fungicide application.



POD SHATTER RESISTANCE

Genetic resistance that minimises yield loss and volunteer issues caused by seed-shedding up to and during harvest.

SCAN HERE

TO RECEIVE YOUR FREE OIL
PROFILE TEST AT HARVEST.



BREEDER'S VIEW

“DK IMPRESSARIO CL is a restored hybrid with the Clearfield™ herbicide resistance trait. It is also capable of high yields with high oil content. It features pod shatter resistance, double phoma resistance and good tolerance to light leaf spot. Has performed extremely well in our own breeding trials.”



MATTHEW CLARKE

RECOMMENDATIONS

Seed rate should target an even plant stand of 25-30 plants/m² in spring.

The rapid autumn growth habit means a PGR may be appropriate in early/mid October on crops early sown or on fertile sites to reduce the risk of over development pre winter.

Ensure the Green Area Index is accurately determined at the start of spring growth to guide appropriate nitrogen rates for optimal canopy size. Lodging risk with DK IMPRESSARIO CL is moderate

Contact our National Account Managers:
tom.chillcott@bayer.com, 07976 397300,
lizzie.matthews@bayer.com, 07918 622318
or our Technical Development and Agronomy representative:
william.vaughan-france@bayer.com, 07768 507866

or learn more at dekalb.co.uk

DEKALB is a trademark of the Bayer Group.