



# Parts, Repair & Field Construction Services

The DRY BULK Connection is the parts division of the industry leader in storage tanks and integrated storage systems . . . Tank Connection.

DBC offers complete field repairs and onsite inspection services for all types of storage tanks. If you have old or new tank construction, we can supply you with the right replacement parts, sidewall panels, decks, hoppers, and structural stiffener supports required to completely rebuild your tanks. We also provide tank/silo retrofit services, custom fabrication, tank relocation, foundation design and full engineering design/review services.

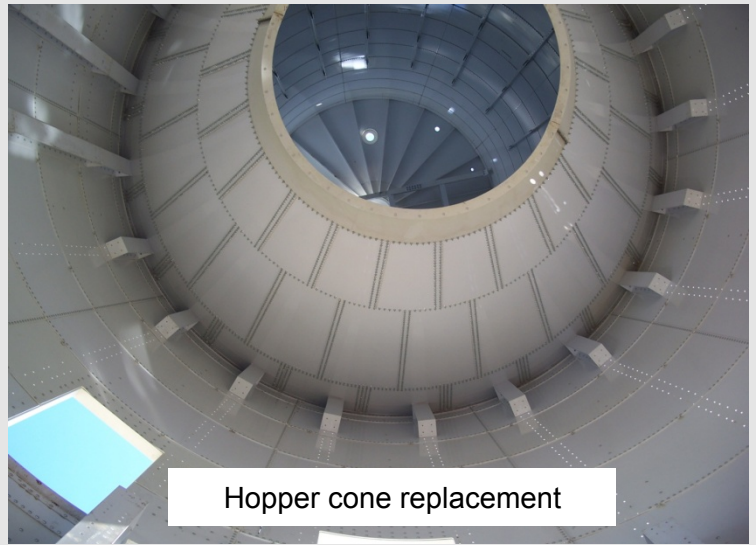


#### At DBC we offer:

- Total part replacements for bolted smooth wall tanks, shop-welded, and field-welded tanks
- Field repair, disassembly, and installation
- Prompt quotations on repair and parts requirements
- Field inspection on bolted tanks, shop-welded, field-welded tanks
- Silo modifications and field retrofits
- Passive and active flow arrangements, promoting functional mass flow
- For applications where product flow/discharge is a concern, we offer product testing. Upon testing the material, precise recommendations can be incorporated into a field-modified design that will provide "reliable material" flow.
- Field modifications changing tanks designed for "funnel flow" to "mass flow" designs
- Replacement parts and service on auxiliary equipment
- Design calculations and PE stamps available on proposed retrofit applications



Damage due to improper design



Hopper cone replacement

## **Replacement & New Parts for RTP bolted, FP bolted, API 12B bolted, Shop-weld & Field-weld Tank Construction**

Sidewall rings

Hoppers

Decks

Deck structural members

Skirt stiffeners

Liquid flat bottoms

Anchor bolts & saddles

Gasket, hardware , and sealant

Custom design & build accessories

Ladders, guardrails, walkways, platforms, structures

API 12B replacement panels are manufactured with an exact 90 degree flange connection. New replacement panels provide a better seal than the original flanged panel assemblies.

At DBC, we design the structural integrity of all replacement part assemblies heavier than the original tank designs.



## **Tank Components**

Hardware - HDG, polycap, stainless, etc.  
Gasket - EPDM, buna nitrile, viton, etc.  
Sealants  
Fill pipes, elbows, etc. - all sizes & construction  
Pipe support brackets & bridges  
Flange and stub nozzles - all types, sizes & materials of construction  
Bin vent filter flanges  
Custom hopper transitions  
Slide gates - all types & construction  
OSHA ladder assemblies  
OSHA perimeter guardrails  
OSHA walkways and crossovers

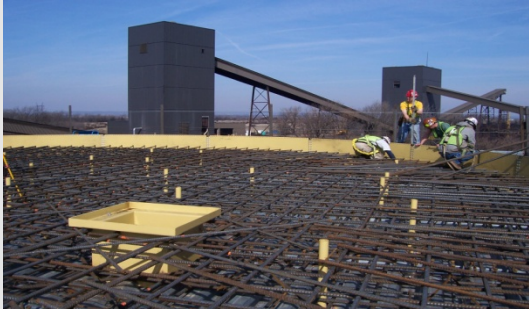
## **Custom Steel Fabrication**

Custom hopper transitions  
Support structures – all custom design  
Elevated tank supports  
Equipment supports  
Maintenance platforms – all types & sizes  
Tank stairways & spiral stairways



Product flow testing  
Custom transition design and fabrication





## **Design Services**

Engineering Service  
Product flow testing  
Engineering/system design  
Structural steel designs  
Foundation design  
Silo & hopper designs  
Storage tank designs  
Custom design services  
Auxiliary equipment interface

## **Field Installation Services**

Tank disassembly  
Tank field coating, blasting, recoating  
Tank relocation  
Tank installation  
Auxiliary equipment installed  
Storage system start-up  
Tank insulation  
Tank retrofit & repair  
Tank inspection  
Tank services worldwide

## **Auxiliary Equipment**

Truck & rail load out systems  
Bottom reclaim screw unloaders  
Fluidizing systems  
Dustless unloading spouts  
Bin vent filters  
Bin activators /dischargers  
Passive discharge hopper transitions  
Bucket elevators  
Pneumatic conveyor systems  
Mechanical conveyor systems  
Inventory measurement

And more...

**Tank Connection** is your SINGLE SOURCE for storage containment products. Let our 2,200+ combined years in storage experience work for you.



[www.drybulkconnection.com](http://www.drybulkconnection.com)

[www.tankconnection.com](http://www.tankconnection.com)