

KARMELLE LTD



Who are we and what do we do?

Karmelle Ltd are a British manufacturer of liquid filling, capping and labelling machines based in West Yorkshire.

We specialise in design and manufacture of bespoke machines for the food and drink, chemical, pharmaceutical, cosmetics, oil and other industries.

We have been established since 1985, with that expertise we can provide as much or as little guidance as requested, from deciding which machine is best for you, to sourcing complimentary equipment and overseeing the whole process.

We tailor our service and our machines completely to your needs.



Filling machines

If it's a liquid we have a solution.



Capping machines

Bespoke cappers for maximum efficiency.



Labelling machines

Custom build labellers for accuracy and speed.



Complete systems

Quality British manufacturing for peace of mind.

Content

Press Releases	3 - 5
Staff Bios	6
Case studies	7 – 8
Recent Press Coverage	9 - 11
Contact Details	12

PPMA Show Preview

The British manufacturer of Complete Liquid Packaging Systems

This year's visitors to the Karmelle stand (this time even bigger and better, so we can show off some of our larger machines) will be greeted with a range of running machinery on show. The star of our exhibition will be a fully functioning three head rotary capper, designed for closing various types of containers with screw, press-on and pilfer proof caps. The machine is especially suitable for use in the food-processing, cosmetic and chemical industries but as all our machines are bespoke, can be widely adjusted.

We will be bringing a number of smaller interactive filling and labelling machines together with videos of our Mini Monoblock (featured in the Sunday Telegraph, Machinery Update, MEM magazine and Packaging Yearbook).

If you are ready to step up your production contact us for friendly advice. We can offer you years of experience and quality bespoke filling, capping and labelling machines designed and build by our engineers right here, in West Yorkshire, to your specification. We export our machinery worldwide, so wherever you are, the best of British manufacturing is at your fingertips.

STAND E24

Tel. 01484 53336

<http://karmelle.com/>



NEW Rotary Capper Launch

Karmelle are pleased to announce a release of a brand new addition to their capping Machinery portfolio – a three head rotary capper currently in production.

The machine is designed for closing various types of containers with screw, press-on and pilfer proof caps. The machine is especially suitable for use in the food-processing, cosmetic and chemical industries but as all our machines are bespoke, can be widely adjusted.

The rotary capper allows you to truly step up the production thanks to its speed, compared to the traditionally used inline pick and place machines.

Karmelle are excited to offer an injection of British quality into a market dominated by imported machinery. Karmelle's UK base allows for easy communication and travel to customers location to inspect the premises to be able to provide solutions designed and manufactured to customer specification.

The working machine will be exhibited at our stand at the PPMA show.

For additional information/short interview please find the director Peter Krawczuk.

STAND E24

Tel. 01484 533356

<http://karmelle.com/>

Seeking Agents/Distributors

Karmelle Ltd are pleased to announce that due to the recent growth and expansion of our team, we are now ready to offer the best of British manufacturing worldwide.

We specialise in manufacture of bespoke liquid filling, capping and labelling machines. Karmelle are currently seeking distributors worldwide operating in the food and drink, chemicals, cosmetics, pharmaceuticals, lube and oil etc.

We offer over 30 years of experience in the liquid packaging industry and are able to provide guidance throughout the whole process – dependant on customer requirements. Our machinery ranges from standard semi-automatic fillers to turn-key packaging lines.

Recently we have provided machinery to companies in Ghana, Greece and Saudi Arabia and would like to expand our reach within these countries and also gain entry to other markets worldwide.

Our ever-expanding range of machines include:

Filling:

- Bucket filling line
- Flowmeter – automatic
- Flowmeter – semi automatic
- Inline VIPF100
- Line pump filler
- Mini monoblock
- Volumetric F100 and F500
- Bench top
- Boom arm
- VIP F500 S1 and S2
- Rotary Monoblock Filler

Capping:

- Rotary cappers
- Cap detector
- CT6 Spindle capper
- EK40 inline pick and place
- Karmelle 4CT

Labelling

- 3 point wraparound labeller
- Flash labeller
- Front and back side apply
- Single side apply labeller
- Pallet labeller

We will be exhibiting our machinery at the PPMA Show in September, please come and visit us at **stand E24**. For additional information/short interview please find the director Peter Krawczuk.

For more information please visit our website:

<http://karmelle.com/>

For videos of running machinery please visit our YouTube channel

<https://www.youtube.com/user/labelfillcapmachines>

If you are interested to become our distributor please contact Sarka at sarka.humpolcova@karmelle.com.

STAFF Bios

Peter Krawczuk

Managing Director

Peter is a co-owner of Karmelle Ltd. He manages the business and is the head of sales, however is heavily involved in all sides of business.

Peter was recently interviewed by the MEM Magazine and is often quoted in press releases due to his vast knowledge of the liquid packaging industry.

Peter will be present at Karmelle's stand E24 for the duration of the PPMA Show. He will be happy to answer any queries on the day and will be available for interviews by appointment.

Please call 01484 533 356 or email sales@karmelle.com to arrange an appointment with Peter.

Brian Dickinson

Technical Director

Brian is a co-owner of Karmelle Ltd. He oversees the design, manufacture and installation of our machinery. He is the head project manager and ensures smooth running of production, installation, servicing and spares. Brian possesses vast technical knowledge and years of experience in manufacturing.

Brian will be present at Karmelle's stand for minimum of 1 day.

To arrange an appointment with Brian please call 01484 533 356 or email sales@karmelle.com.

Sarka Humpolcova

Marketing Executive

Sarka is the head of marketing at Karmelle. She is responsible for marketing, advertising, PR, events and recruitment.

She was recently interviewed by the The Pitch with regards to SME recruitment strategies.

Sarka will be present at the PPMA Show for the whole duration of the event. She will be happy to meet any press representatives and will be available for interviews by appointment.

Please call 01484 533 356 or email sarka.humpolcova@karmelle.com for more information.

Case Studies

Whisky tasting Company

Karmelle Ltd was chosen by a miniature whisky bottles manufacturer, based in Shropshire, to design and develop a machine unique to the UK market – a monoblock machine capable of filling, capping and labelling a high volume of bottles in a limited space.

Karmelle were happy to accept the challenge and within a few months a brand new machine was born, a machine with a footprint of only two by one metres designed to fill 30 millilitre miniature whisky bottles at twenty per minute, adjustable to different volumes and speeds.

The Mini Monoblock, as the Karmelle team affectionately calls the machine, is suitable for a variety of industries including food & drink, cosmetics, chemical and pharmaceutical.

For a video of the machine running please visit our YouTube channel:

https://www.youtube.com/watch?v=1mFC9Y_7_Zo

Glastonbury Spring water

Karmelle Ltd, manufacturers of liquid filling and capping solutions based in Huddersfield was approached by Glastonbury Spring Water to design and build the equipment after the firm decided it wanted to use British Suppliers.

Brian and his design team came up with the finished design for the rotary mono-block filler, which automatically feeds bottles onto production line, washes them and fills and caps them before they move onto a labelling machine – also supplied by Karmelle.

Glastonbury, which draws water from a spring below the famous Glastonbury Tor, specified a machine capable of filling 330ml bottles of still or carbonated spring water at a rate of 40 a minute.

Under tests, the filling line, proved capable of running at 80 per minute.

Henllan Bread

Karmelle Ltd, have been chosen by family bakers Henllan bread of Denbighshire, North Wales, to supply a top mounted servo driven labelling head with integrated thermal printer, for batch coding and pricing.

The labelling systems which sits over a 1.2 metre belt conveyor, is mounted on a mobile stand. This allows the labelling system to be transferred easily, between production lines, giving Henllan bread a cost effective solutions for their labelling requirements.

Quat-Chem

Karmelle Ltd were recently chosen by Quat-Chem, manufacturer and supplier of biocidal raw materials and disinfectants, to design, build and install a turn key filling, capping and labelling line.

The contract was secured after Mike Holden, Karmelle representative, visited Quat-Chem's premises in Rochdale and discussed the complex project.

Karmelle Ltd supplied a fully automatic in-line 4 head volumetric filling machine, suitable for a wide range of products including oils and chemicals.

A single head Karmelle EK40 in-line pick and place screw / push on capper suitable for a range of containers.

A servo S2-175 applicator, which is the latest state of the art servo-driven label applicator in the Karmelle range.

It offers greatly enhanced accuracy and reliability over the previous clutch/brake system, and has a fully-electronic control box with programmable product memory and HMI display.

Contracting Karmelle enabled Quat-Chem to single source all their packaging machinery rather than engaging a number of different suppliers.

Sidalco

Karmelle Ltd was chosen by the African firm Sidalco, based in Tema, Ghana to export 3 automated processing lines. The production lines have been designed to fill, seal and label plastic containers containing Sidalco's branded agrochemical Defender.

Karmelle took 16 weeks to complete the filling lines. Karmelle engineers went to Ghana to commission the plant and train local workers to operate it.

The equipment allows Sidalco to turn out up to 20,000 litres a day of the fungicide, which is used to protect a range of agricultural and horticultural crops in copper-deficient soil.

Thornton and Ross

Karmelle Ltd, manufacturers of self-adhesive labelling equipment based in Huddersfield was engaged by pharmaceuticals and household products firm Thornton and Ross to design build and install a labelling line for its Linthwaite site.

The contract was secured after Andrew Felstead of Thornton and Ross visited Karmelle's stand at the PPMA show in Birmingham.

The labelling line has several high-tech features, including a camera system which automatically rejects and documents inaccurate labels. Thornton and Ross who buy equipment from all over the world were delighted to work with a local company on this turn-key project.

Recent Press Coverage

MEM Magazine

AUTOMATION KARMELLE

A COMPLETE SOLUTION

WITH OVER 30 YEARS OF EXPERIENCE KARMELLE IS A UK-BASED COMPANY SPECIALISING IN THE DESIGN, MANUFACTURE AND INSTALLATION OF LIQUID PACKAGING EQUIPMENT.



When Peter Krawczuk and Brian Dickinson took over filling machine manufacturer Karmelle in 2002, they aimed to offer something different. Combining their technical and creative skills, they added to the product range to deliver a unique turnkey service – British made liquid filling, capping and labelling lines backed by full servicing and spares.

"We design, manufacture, install, and commission filling, capping and labelling machines," explains Peter. "We also provide training and offer maintenance contracts tailored to suit customer requirements. Manufacturing in the UK allows for quick response times for breakdowns and spares requirements as we know customer downtime can be costly."

"To extend the product range further and offer a more complete service, there's been a recent tie-up

with a Spanish manufacturer of robotic equipment for decussing and palletising equipment, enabling a full automation with use of robots at the start and end of Karmelle's packaging lines. This enables Karmelle to deliver turnkey projects.

Peter says: "We can supply a complete solution; we manufacture the majority of machines in house without relying on third parties apart from odd components and we team up with quality suppliers for complementary machinery. On the whole, we source everything and customers like that because it avoids them going separately to filling, capping and labelling companies; they come to us for the whole package including project management."

The products are used by a cross section of industries including food and drink, chemical and pharmaceutical, ranging from start-ups to multi-national manufacturers. Karmelle, as Peter outlines, is involved at the infancy stage of projects: "We work closely with the customer and the level of our input depends on the

22 MANUFACTURING AND ENGINEERING MAGAZINE

AUTOMATION KARMELLE



MANUFACTURING AND ENGINEERING MAGAZINE 23

stage they are at. Sometimes they're building a factory but have no idea how to lay it out and we'll help with the design of the line. Other companies, however, will provide detailed drawings for the production line and we'll quote on that basis. It's almost like consultancy and we'll project manage jobs for companies and see them right through from start to finish, sourcing all the equipment. On the other hand, some customers just want us to deal with the filling line and they handle all the rest of it, so we're flexible in what we do."

That flexibility led to one customer requesting the development of a monoblock filler, capper and labeller capable of handling a large number of bottles in a limited space. The outcome was a machine with a footprint of only two square metres that was designed to fill 30 millilitre miniature whisky bottles at twenty per minute, although adjustable to different volumes and speeds, therefore suitable for various industries.

Karmelle was also chosen by bioethical raw materials and disinfectant manufacturer Quat-Chem to design, manufacture and install a filling, capping and labelling line. This comprises a fully automatic in-line four head volumetric filling machine, an EK40 in-line pick and place screw/push on capper and a servo-driven label applicator.

The product range has recently been extended with the addition of a new capper, the Karmelle ACT that can tighten screw caps on virtually any shape of glass, plastic or metal container. An adjustable speed control means it can precisely match conveyor speeds up to fit-



teen per minute.

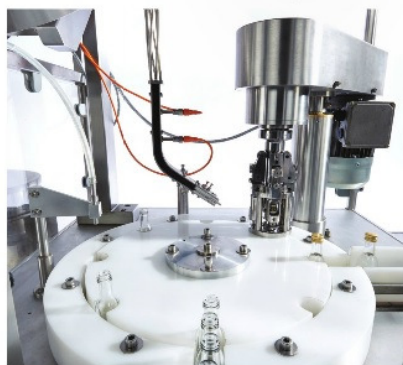
Many of Karmelle's machines are exhibited at the PPMA show, Karmelle having been a member of the PPMA for ten years, which helps promote its products. "We're pushing the fact they're made in Great Britain because we're proud of what we do and we're trying to fly the flag for the UK," remarks Peter.

A remarkable year of growth in 2014 included many new projects and the recruitment of

specialist staff to cope with the demand. Peter says: "We are prepared to wait for the right people, even if they haven't worked in this industry before. If they have the core knowledge and have potential, we work with them to further develop their skills which, at the end of day, benefits the company."

The plan for the future is to expand into overseas markets and generally grow further. The process is already underway and, according to Peter, there's a clear strategy behind it: "With the rapid growth, Karmelle has moved into purpose built premises with state of the art equipment to complement the new look. Over the years, we have focused on what we're good at and just kept improving the product range to keep up with our customer demands. With the added infrastructure, we are now in a better position to accommodate bigger projects than ever before."

www.karmelle.com
Telephone: 01484 533356



MANUFACTURING AND ENGINEERING MAGAZINE 25



Unique packing machines – proudly made in Yorkshire

IndustryVIEW

In 2002 Peter Krawczuk and Brian Dickinson came together to create the new Karmelle from ashes of the old company. Combining their technical skills and creative insight, they managed to extend the range of machinery to offer something different to the manufacturing industry.

"We design, manufacture, install, and commission filling, capping and labelling machines right here, in West Yorkshire," explains Peter. "We also provide training and offer maintenance

contracts tailored to suit customer requirements. Our manufacturing base in the UK allows for quick response times for breakdowns and spares requirements as we know customer downtime can be costly."

Karmelle offers a turnkey service to a cross-section of industries, including the food and drink, pharmaceutical, cosmetics and chemical, ranging from start-ups to multinational manufacturers. Because Karmelle manufactures all machines in-house, it allows the company to be flexible in what it does.

This flexibility recently led to a development of a bespoke machine (as seen in the picture, left) with a footprint of only two square metres that was designed to fill 30ml miniature whisky bottles at 20 per

minute, although adjustable to different volumes and speeds, therefore suitable for various industries.

Karmelle also provides a great selection of standard semi-automatic and automatic machinery. Whether you are a local artisan producer or an overseas manufacturer, you are welcome to contact the staff at Karmelle for a free consultation. You will be sure to get the best in quality British manufacturing.

You can also come and visit our stand at the PPMA show in Birmingham this September, where some of our machinery will be on display.

01484 533356

<http://karmelle.com>

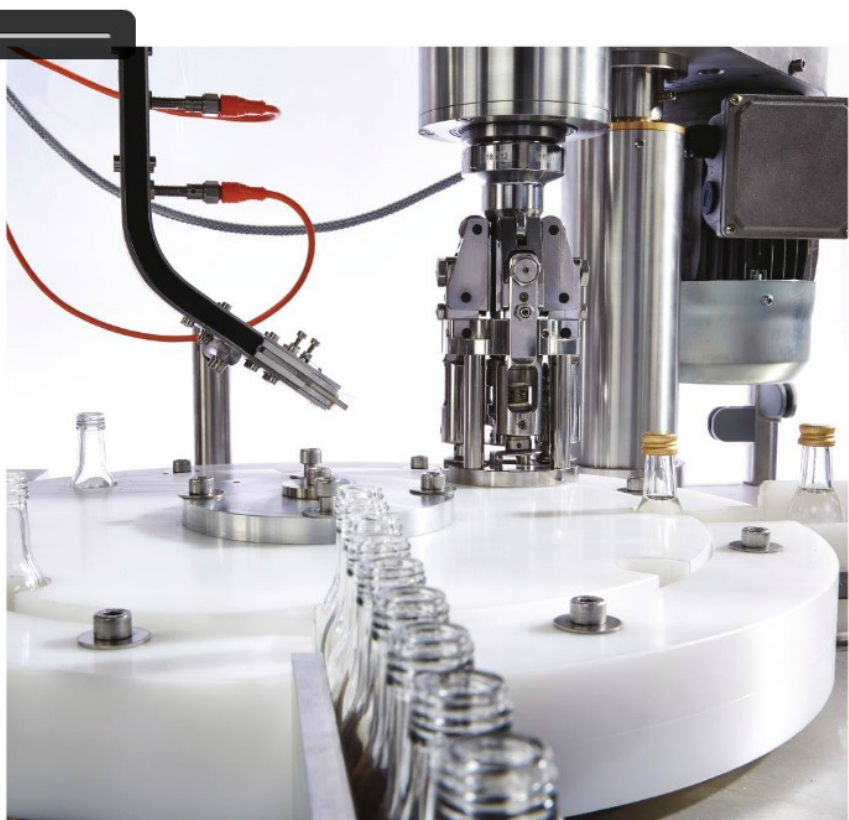
Machinery Update

Karmelle has added a monobloc filling, capping and labelling machine to its extensive range of equipment that covers entry level machines through to complete turnkey lines.

The monobloc filler, capper, labeller has been designed to be installed in any restricted space as it covers only 2 x 1 metres. This makes it ideal for clients with limited footprint availability, says Karmelle. The labeller is integrated into the system so each production element can be fulfilled on one unit.

This custom made machine can be adjusted to fill volumes up to 250ml and can operate at up to 30 bottles a minute.

The machine is fitted with



This machine designed and built by Karmelle uses volumetric filling

TWO-MAN Traiblazer

When Peter Krawczuk and Brian Dickinson took over Karmelle in 2002, they decided against following the path set out for the company, instead they wanted to offer something different to the industry. Thirteen years later and the two man band has grown into a trail-blazing company with a growing number of employees (currently at 18). With Peter's creativity and Brian's technical skills, Karmelle was able to add a number of machines to their range to offer a unique turnkey packaging service.

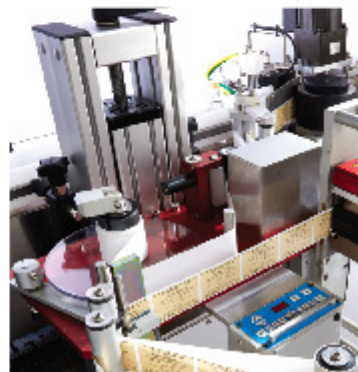
"We design, manufacture, install, and commission filling, capping and labelling machines right here, in West Yorkshire" says Peter. "We also provide

training and offer maintenance contracts tailored to suit customer requirements. Our manufacturing base in the UK allows for quick response times for breakdowns and spares requirements as we know customer downtime can be costly."

Karmelle's flexibility lead to a recent introduction of a Mini Monoblock filler to the UK market (as seen in the picture xxx). This unique machine developed originally for a miniature whisky bottle company is capable of filling, capping and labelling products fast and has a footprint of only two square metres. It can be adjusted to fill a variety of containers and is suitable for a range of industries. Brian says "We serve a cross-section of industries, including the food and drink, pharmaceutical, personal care and chemical, ranging from artisan producers to multinational manufacturers. We design and manufacture all machines here in Yorkshire. Whether the customer requires a standard semi-automatic filler or needs a full bottling plant refurb, we will have a solution for them."

You can call us, email us or visit our stand at the PPMA show in Birmingham, in September.

With Karmelle you can be sure of what you are getting – the best of British quality manufacturing.



Tel: 01484 533 356
<http://www.karmelle.com>

Contact Details

T: +44 (0)1484 533 356

E: karmelle@gmail.com

Karmelle Liquid Filling

& Capping Solutions Limited

Unit 17 Queens Mill Ind. Estate

Queens Mill Lane

Huddersfield HD1 3RR

West Yorkshire

United Kingdom

For press enquiries please contact:

Sarka Humpolcova

sarka.humpolcova@karmelle.com

01484 533 356

Connect with us:



<https://twitter.com/KarmelleLtd>



<https://www.facebook.com/karmellehuddersfield>



<https://uk.linkedin.com/in/karmelleltd>



<https://www.youtube.com/user/labelfillcapmachines>