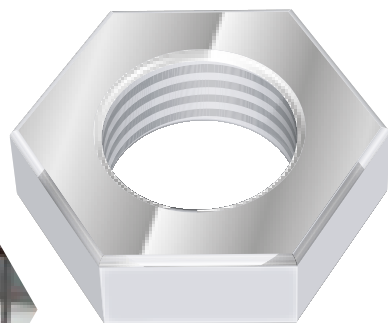


PREFABRICATED PACKAGED PLANTROOM CASE STUDY

Embassy Gardens A05, London



Value £57,500

Build period 8 weeks

Client Cilantro MEP Engineering

Contents:

- ✓ Weatherproof enclosure 4.0 x 3.0 x 2.7 metres high
- ✓ Circulating single head pumps
- ✓ Pressurisation unit
- ✓ Expansion vessel
- ✓ 125mm dia Combined air & dirt separator
- ✓ Chemical dosing pot
- ✓ Chilled water pipe services
- ✓ Thermal insulation & protective cladding
- ✓ BMS Controls & wiring
- ✓ Internal lighting, emergency lighting, & small power

See reverse for schematic arrangement and general layout.

