

# FINISH3D

MMP TECHNOLOGY & EXTRUDE HONE



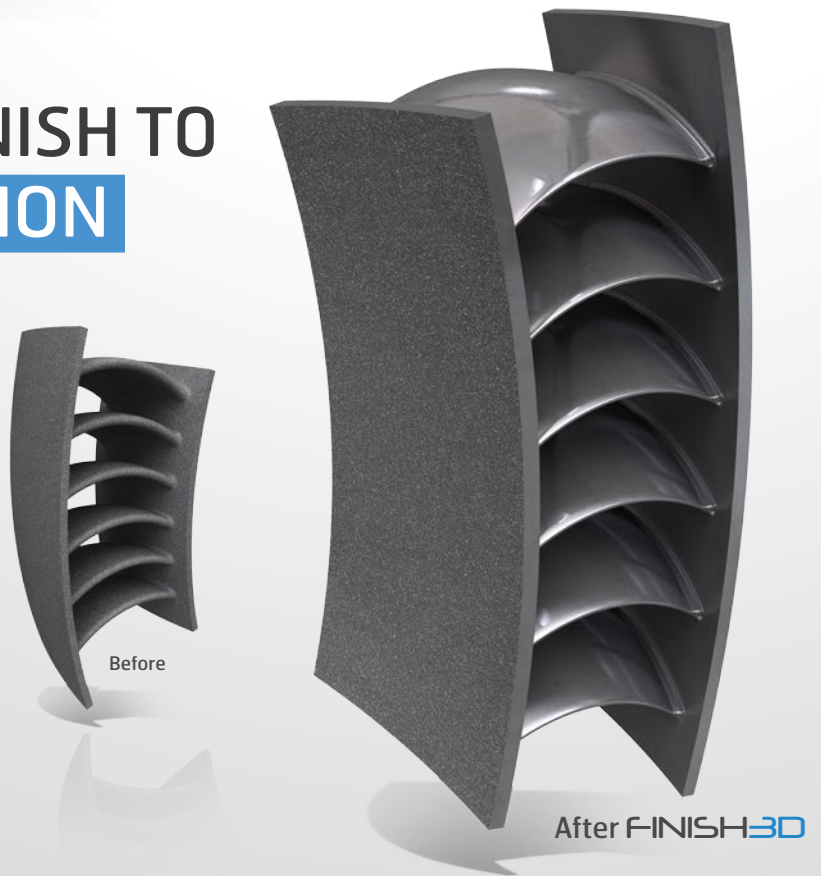
Before

After FINISH3D

## TAKING SURFACE FINISH TO A NEW DIMENSION

FINISH3D ARRIVES IN 2018  
AS A FINE TUNED SOLUTION  
TO UNCOVER THE DIAMOND  
IN THE ROUGH.

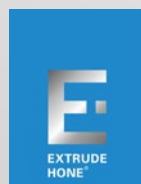
For the first time, two key players in the surface finishing industry have combined their technologies in order to provide a solution for ANY part made by Metal Additive Manufacturing.



Before

After FINISH3D

MMP<sup>®</sup>  
TECHNOLOGY



# FINISH3D

MMP TECHNOLOGY & EXTRUDE HONE

Additive Manufacturing has shown its amazing ability to build parts with very complex geometries that have never been seen before with any other manufacturing process. Additive Manufacturing is now reaching an industrial level and can even compete with traditional industry.

## FINISH3D OFFERS FREEDOM OF FINISHING :



- Compatible with practically ANY geometry
- Limitless Roughness Capabilities - There are no limitations on starting roughness OR the end roughness able to be achieved (even  $<1\mu\text{in Ra}$ )
- A solution brought to you with a controlled price and controlled delivery time.

## FINISH3D ALLOWS YOU TO SIT BACK AND RELAX :

- The best finishing strategy will be applied
- Your time will be saved
- The results are simulated and guaranteed
- Greater chance of project success
- More projects will go to high volume production

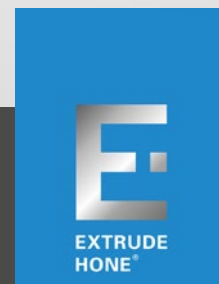
## FINISH3D EASE OF ACCESS :

- Address your existing contact at either MMP Technology or Extrude Hone
- Same product and same service quality from both partners
- Available in Americas, Europe, and coming soon to Asia



**MMP**<sup>®</sup>  
TECHNOLOGY

[finish3D@bincindustries.com](mailto:finish3D@bincindustries.com)



[finish3D@extrudehone.com](mailto:finish3D@extrudehone.com)