

Crane Specifications

The information in Figure 5–23 and the following specifications are general in nature and are used for reference purposes only. Depending upon the vintage of the crane, some features may no longer be available. Standard and optional features may vary from crane to crane. Consult the factory to verify the specific information if required.

A	Live Mast Height (Min Boom Angle)	44'–3.0" (13.49m)	
B	Live Mast Height (Max Boom Angle)	35'–4.2" (10.76m)	
C	Overall Length (Lower)	30'–8.0" (9.35m)	
D	Tail Swing (Upper Counterweight)	20'–3.5" (6.19m)	
E	Ground Clearance (Upper CTWT)	5'–3.4" (1.61m)	
F	CL Rotation to CL Boom Foot	57.1° (1.45m)	
G	Boom Angle (Max)	82°	
H	Live Mast Tail Swing	19'–10.4" (6.55m)	
J	Boom Foot Pin Height	8'–1.4" (2.48m)	
K	Track Shoe Width	50" (1.27m)	
		60" (1.52m)	
L	Ground Clearance (Frame)	1'–5.4" (0.44m)	
M	Overall Width (50" [1.52m] Track Shoe)	Extended	26'–2.0" (8.0m)
		Retracted	23'–4" (7.11m)
	Overall Width (60" [1.52m] Track Shoes)	Extended	27'–5" (8.36m)
		Retracted	24'–2" (7.36m)

N	Distance Between Tracks (50" Track Shoes)	Extended	17'–10.0" (5.43m)
		Retracted	15'–0" (4.57m)
N	Distance Between Tracks (60" Track Shoes)	Extended	17'–0" (5.18m)
		Retracted	14'–2" (4.32m)
P	Upper Width Over Catwalks		17'–10.9" (5.46m)
Q	Track Gauge	Extended	22'–0" (6.71m)
		Retracted	19'–2" (5.84m)
R	Track Height		4'–9.7" (1.47m)

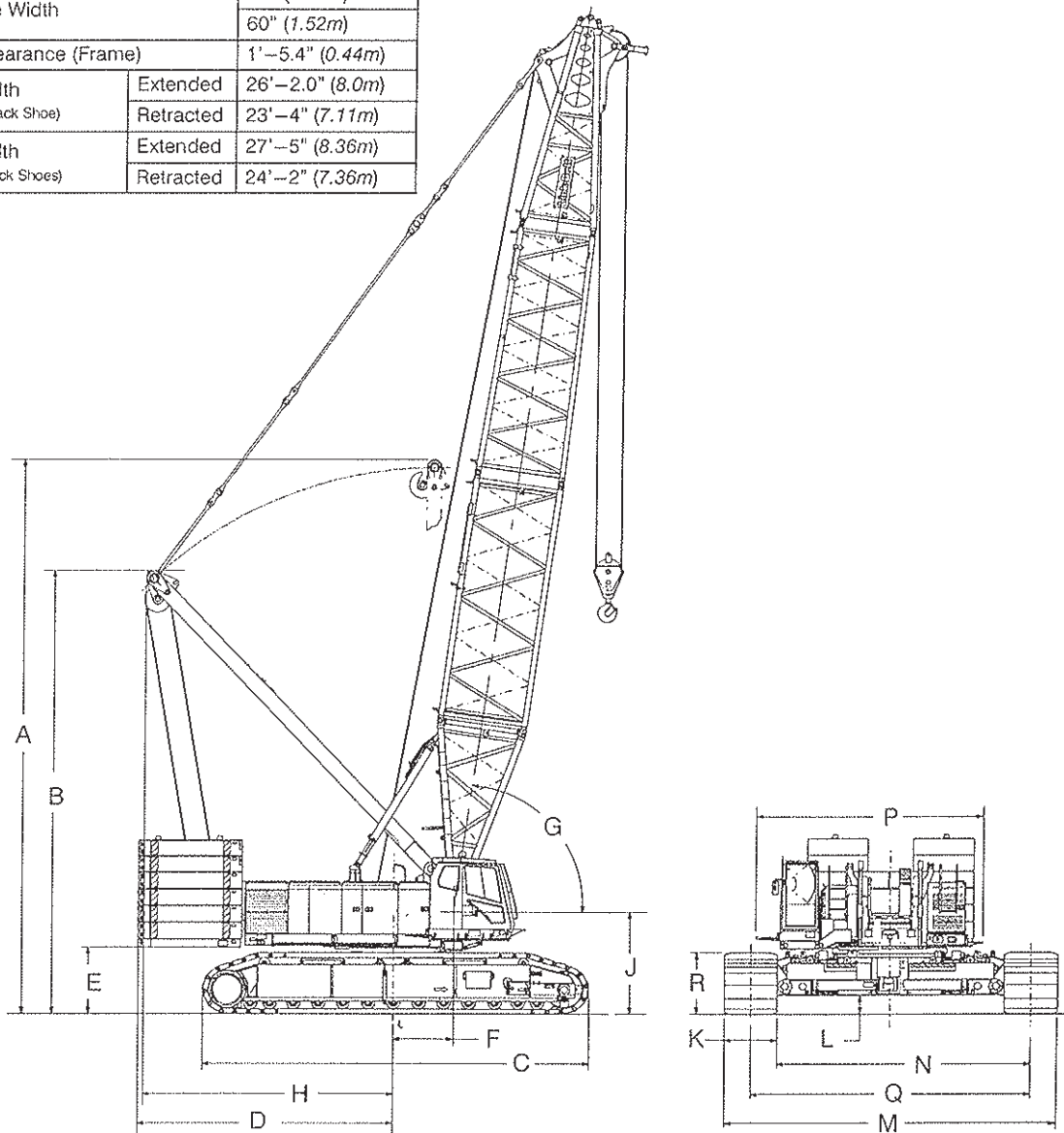


Figure 5–23
Physical Dimensions