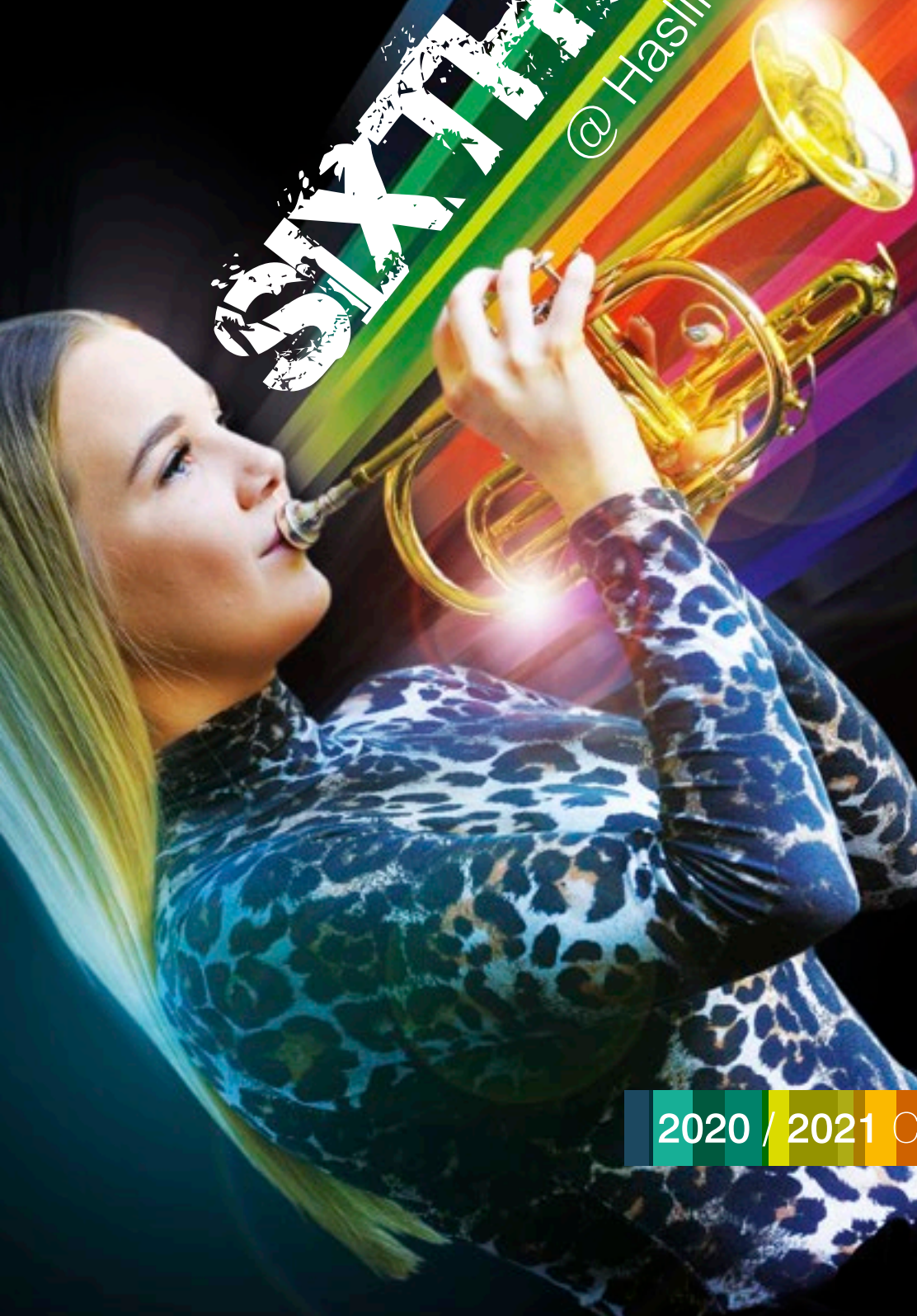


SIXTH FORM

@ Haslingden High School



TALKING
CARE OF
YOUR
FUTURE

2020 / 2021 Course Information



CHOICE OF COURSES

Taking Care of Your Future

Haslingden High School's Sixth Form offers a wide range of courses so that you can find the right pathway to ensure your future success. All of the courses we offer allow you to gain the UCAS grades and points you need to progress to university, and they are all qualifications valued by employers.

Our Level 3 courses have a basic entry requirement of at least 5 grade 4 passes at GCSE (including English and maths) and we offer two types. A-level courses are two year courses aimed particularly at students who achieve a high grade 5 or above at GCSE level. Students are assessed mainly through final examinations. Our vocational courses are particularly suited to those mainly attaining grade 4 at GCSE level or those who have specific career aspirations in a particular area. Work is assessed through a combination of coursework assignments and examinations, and they are equivalent to an A-level. In sport only we offer the chance to enrol into our Sports Leadership Academy where an Extended Diploma (equivalent to 3 A levels) is studied alongside gaining coaching skills, awards and work experience.

We also offer a Post-16 Foundation Year Level 2 course for students who have not attained at least 5 grade 4 passes at GCSE. Successful completion of this business and IT qualification in Year 12 allows a student to progress onto some of our Level 3 courses the following year.

Unless enrolling onto our Level 2 course or into our Sports Leadership Academy (details of these courses are found at the back of this booklet), students choose four courses and we always hold detailed discussions with each of our applicants to ensure that they choose the right combination for their individual abilities and aspirations. Their choice could be four A-levels, four vocational courses or a mixture of the two.

When you have made your choices, fill in an application form and return it to us as soon as possible. Please contact us if you need any further advice or assistance.

2020 / 2021



A Level



COURSE KEY

Please note that these courses will only be available if sufficient numbers of students choose to study them and that some course details may change due to government and exam board regulatory changes.

Vocational



Level 2



Course Information



Art and Design

A Level

BRIEF DETAILS:

The art & design specification provides candidates with the opportunities to develop personal responses to ideas, observations, experiences, environments and cultures in practical, critical and contextual form.

PREFERRED ENTRY REQUIREMENTS:

Grade 5 or above at GCSE art.

UNITS STUDIED:

- **Unit 1:** Personal investigation
- **Unit 2:** Externally set assignment (preparatory period plus 15 hours of exam time)

EXAM BOARD: AQA

COURSE ASSESSMENT DETAILS:

This course is assessed through practical examinations (40%) and controlled assignments (60%).

PROGRESSION AND CAREER OPPORTUNITIES:

An A-level in art & design will prepare students to study and work in the following areas: graphic design, photography, fine art, three dimensional design and crafts, fashion and textiles.



Biology

A Level

BRIEF DETAILS:

Biology involves the study of an incredibly wide range of topics; from the study of molecules in biochemistry to the study of whole ecosystems and how they change over millions of years. Biology is the science of life and, as a science, it also gives you the opportunity to develop practical skills, data analysis and the ability to think critically about information. All of these are skills are hugely in demand from both universities and employers. As the world changes, with ecosystems being destroyed, personalised drugs being created, new diseases being discovered and ways to feed the ever increasing global population needed, the study of biology becomes only more relevant and important.

PREFERRED ENTRY REQUIREMENTS: Grade 5 or above at GCSE science, English and maths is the minimum requirement. Grade 6 in English and maths are highly recommended.

UNITS STUDIED:

- **Unit 1:** Biological molecules
- **Unit 2:** Cells
- **Unit 3:** Organisms exchange substances with their environment
- **Unit 4:** Genetic information, variation and relationships between organisms
- **Unit 5:** Energy transfers in and between organisms
- **Unit 6:** How organisms respond to changes in their internal and external environment
- **Unit 7:** Genetics, population, evolution and ecosystems
- **Unit 8:** The control of gene expression

EXAM BOARD: AQA

COURSE ASSESSMENT DETAILS: The course is assessed through examination only, with a separate endorsement of practical skills. At least 15% of the questions on the examination will assess your knowledge of how to carry out an experiment.

PROGRESSION AND CAREER OPPORTUNITIES:

Biology can lead to careers in the medical and health professions, zoology, marine biology, conservation biology, epidemiology, education, science writing, law, government and many others. As well as leading to a science based career, biology can enable you to pursue a huge variety of non-science based careers as it is a well-respected course which develops a number of transferable skills.

A Level Business

BRIEF DETAILS:

Business is a subject that provides not only a valuable A-level qualification but also an appreciation of the real world. From studying small businesses to exploring the management, operations, marketing and financial workings of huge corporations and the workings of the economy, the subject will suit those with an interest in current affairs and who enjoy TV programmes such as The Apprentice and Dragon's Den.

PREFERRED ENTRY REQUIREMENTS: Grade 5 or above at both English & maths.

There is no requirement to have studied the subject at GCSE but a grade 5 or higher is required if the subject is taken.

UNITS STUDIED:

- **Unit 1:** What is business?
- **Unit 2:** Managers, leadership and decision making
- **Unit 3:** Decision making to improve marketing performance
- **Unit 4:** Decision making to improve operational performance
- **Unit 5:** Decision making to improve financial performance
- **Unit 6:** Decision making to improve human resource performance
- **Unit 7:** Analysing the strategic position of a business
- **Unit 8:** Choosing strategic direction
- **Unit 9:** Strategic methods: how to pursue strategies
- **Unit 10:** Managing strategic change

EXAM BOARD: AQA

COURSE ASSESSMENT DETAILS: This course is assessed entirely through final examinations.

PROGRESSION AND CAREER OPPORTUNITIES:

An A-level in business will particularly suit those looking to study or work in the following areas: accountancy, economics, business management, marketing, human resource management, logistics, banking or self employment.

Cambridge
Technical
Extended
Certificate

Business

Cambridge Technical Extended Certificate

BRIEF DETAILS:

The Cambridge Technical Extended Certificate in business is a vocational course that gives learners an introduction to, and understanding of the business environment, management of resources, marketing and communication – all fundamental to the success of business organisations.

PREFERRED ENTRY REQUIREMENTS: Grade 4 or above at both English & maths.

There is no requirement to have studied the subject at GCSE.

UNITS STUDIED:

- **Unit 1:** The business environment
- **Unit 2:** Working in business
- **Unit 3:** Customers and communications
- **Unit 4:** Marketing and market research
- **Unit 5:** Introduction to human resources

EXAM BOARD: OCR

COURSE ASSESSMENT DETAILS:

This course is assessed through coursework assignments (50%) and examinations (50%).

PROGRESSION AND CAREER OPPORTUNITIES:

A Cambridge Technical Extended Certificate in business will particularly suit those looking to study or work in the following areas: accountancy, economics, business management, marketing, human resource management, logistics, banking or self employment.





Chemistry

A Level

BRIEF DETAILS:

Our objective is to ensure that learning is enjoyable and enhances a candidate's enthusiasm for chemistry. The AQA specification has been tailored to follow on from additional science at GCSE and will develop a candidate's knowledge and understanding to provide a pathway to further study. Practical skills are a key part of chemistry; both in assessment and to support understanding, thus they are a key part of lessons within all units.

PREFERRED ENTRY REQUIREMENTS:

Grade 5 or above at GCSE science, English and maths is the minimum requirement. Grade 6 in maths is highly recommended.

UNITS STUDIED:

- **Unit 1:** Physical chemistry
- **Unit 2:** Inorganic chemistry
- **Unit 3:** Organic chemistry

Practical skills are taught within all units.

EXAM BOARD: AQA

COURSE ASSESSMENT DETAILS:

This course is assessed entirely through final examinations.

PROGRESSION AND CAREER OPPORTUNITIES:

Chemistry is recognised by universities as one of the most demanding A-levels. The document 'Subject Matters: Post 16 Subject Choices' states, "There are certain A-level subjects that are considered either essential or useful for a number of courses at Cambridge, therefore choosing one or more of these will help keep your higher education options open." Chemistry is first on that list of only six subjects. Whilst A-level chemistry can lead on to diverse range of careers from accountancy to zoology; it is usually the only essential A-level for subjects such as medicine, dentistry, pharmacy and veterinary science.



Computer Science

A Level

BRIEF DETAILS:

This specification promotes the integrated study of computer science. It will enable learners to develop a broad range of skills in the areas of programming, system development, computer architecture, data, communication and applications. The practical programming component requires learners to investigate, design, prototype, test and evaluate a solution.

PREFERRED ENTRY REQUIREMENTS:

At least grade 5 at GCSE maths or grade 5 at GCSE computer science. Suitability will be discussed at interview.

UNITS STUDIED:

- **Unit 1:** Programming and system development
- **Unit 2:** Computer architecture, data, communications and applications
- **Unit 3:** Programmed solution to a problem

EXAM BOARD: Eduqas

COURSE ASSESSMENT DETAILS:

This course is assessed through examination (80%) and practical assessment (20%).

PROGRESSION AND CAREER OPPORTUNITIES:

This specification encourages candidates to develop a broad range of skills and knowledge of computing as a basis for progression into further learning or employment in computing-related fields.



Criminology

Level 3 Applied Diploma

BRIEF DETAILS:

The Level 3 Applied Diploma in Criminology offers exciting and interesting experiences that focus learning for students through purposeful contexts linked to the criminal justice system. It is a qualification with elements of Sociology, Law and Psychology.

The course provides learners with an introduction to criminal justice and together with other relevant qualifications; it develops understanding to support entry to higher education courses in the humanities sector.

PREFERRED ENTRY REQUIREMENTS:

Grade 4 or above at both English & maths.

There is no requirement to have studied the subject at GCSE.

UNITS STUDIED:

- **Unit 1:** Changing awareness of crime
- **Unit 2:** Criminological Theories
- **Unit 3:** Crime scene to court room
- **Unit 4:** Crime and punishment

EXAM BOARD: WJEC**COURSE ASSESSMENT DETAILS:**

Unit 1 and 3 are assessed internally with controlled assessment.

Unit 2 and 4 are assessed externally by examination

PROGRESSION AND CAREER OPPORTUNITIES:

By studying this course students will gain the required knowledge to be able to consider further study in higher education in sociology, psychology, criminology, criminal justice, in addition to apprenticeships within law enforcement, legal work prison work and social work.

Dance

A Level

BRIEF DETAILS:

Dance is a subject that provides a creative focus for students through a physical medium. A-level dance requires students to be good at performing, interpreting and creating contemporary dance. Students are able to further their GCSE experience or to formalise the dance training which they may have had as an extra-curricular activity.

The course encompasses a wide variety of studies, particularly up-and-coming choreographers currently creating their work in the UK. This will include a set work: "Rooster" by Christopher Bruce and a choice of one other professional work from a list of four stated in the syllabus. Students analyse both the content and the context of these professional works. The studies then feed into students' practical work which encourages skills such as solo and group performance and choreography.

PREFERRED ENTRY REQUIREMENTS:

Grade 5 or above at GCSE dance or equivalent experience in dance training and grade 4 at GCSE English.

UNITS STUDIED:

- **Unit 1:** Performance and choreography
- **Unit 2:** Critical engagement

EXAM BOARD: AQA**COURSE ASSESSMENT DETAILS:**

This course is assessed through exams (50%) and practical assessment (50%).

PROGRESSION AND CAREER OPPORTUNITIES:

A-level dance will suit students who are aiming to continue dance studies or performing arts courses within higher education. It also provides relevant subject knowledge for students wishing to pursue a future in dance teaching.



Design & Technology: Product Design A Level

BRIEF DETAILS:

This course is designed to encourage students to take a broad view of design & technology, to develop their capacity to design and make products and to appreciate the relationship between design, materials, manufacturing and marketing. Students will gain a real understanding of what it means to be a professional designer, engineer and technologist. Students can work in a variety of materials and can choose to work in electronics as well as other materials if they wish to.

PREFERRED ENTRY REQUIREMENTS:

Grade 4 Design and Technology at GCSE level is essential.

UNITS STUDIED:

- **Unit 1:** Technical principles
Exam worth 30% of A level
- **Unit 2:** Designing and making principles
Exam worth 20% of A level
- **Unit 3:** Non exam assessment (NEA)
A design and make project of the student's own choice worth 50% of A level

EXAM BOARD: AQA

COURSE ASSESSMENT DETAILS:

This course is assessed through examinations (50%) and a practical project (50%)

PROGRESSION AND CAREER OPPORTUNITIES:

This course will support an entry to a variety of university courses including industrial design, interior design, graphic design, fine art, marketing, product design & development, architecture, computing, education or engineering. It will also help support employment or apprenticeships in industry.



Digital Media

Cambridge Technical Extended Certificate

BRIEF DETAILS:

Digital media provides opportunities to explore a range of media industries with a specific focus on the television and film industries. From developing your research and analysis skills to effectively planning and producing your own media texts, including a music video, this course has something for everyone. With cross-curricular links to business, information technology, sociology, psychology and law, it is a flexible and versatile subject that will complement a range of other studies as well as standing out as a respected subject in its own right.

PREFERRED ENTRY REQUIREMENTS:

At least grade 4 at GCSE English. There is no requirement to have studied media previously.

UNITS STUDIED:

- **Unit 1:** Media products and audiences
- **Unit 2:** Pre-production and planning
- **Unit 3:** Create a media product
- **Unit 20:** Advertising media
- **Unit 21:** Planning and delivering a pitch
- **Unit 22:** Scripting for media products

EXAM BOARD: OCR

COURSE ASSESSMENT DETAILS:

This course is assessed through coursework assignments and examinations.

PROGRESSION AND CAREER OPPORTUNITIES:

MediaCityUK is the home of the BBC and ITV and a leading international hub for the creative and digital sectors. Manchester is fast becoming the location to work in the media industry, with MediaCityUK on our doorstep in Salford there are many career opportunities in this field locally. Possible careers can include working within the television, marketing and film industries as well as equipping you with invaluable skills that are applicable to many different careers.

Drama and Theatre Studies

A Level

BRIEF DETAILS:

Theatre studies teaches students to unpick the blueprint of a play text, as well as the necessary vocabulary to realise it in performance across a range of disciplines, both theoretical and artistic, as directors, performers and designers. They will make theatre themselves, rooting their ideas in practitioner theory and the rich history of dramaturgy. By the end of the course, students will be sophisticated theatrical practitioners, capable of directing, designing, acting and staging a play.

PREFERRED ENTRY REQUIREMENTS:

Grade 5 or above at GCSE drama and grade 4 at GCSE English.

UNITS STUDIED:

- **Unit 1:** Devising from a text/ applying practitioner methods
- **Unit 2:** Text in performance
- **Unit 3:** Theatre makers in practice

EXAM BOARD: Edexcel

COURSE ASSESSMENT DETAILS:

This course is assessed by a combination of examination (40%) and coursework that includes performance (60%).

PROGRESSION AND CAREER OPPORTUNITIES:

The creative industries are the fastest growing area of the British economy. Last year they employed over 2.8 million people. Theatre studies is the next logical step to a career in the creative industries. The huge variety of skills developed here; creative thinking, interpretation, interpersonal skills and the ability to make ideas powerful for an audience, are all highly attractive skills to employers. A wide variety of degree courses are available to theatre students, including theatre management, design degrees and theatrical performance.



English Language

A Level

BRIEF DETAILS:

This course encourages learners to develop their interest and enjoyment of English as they explore many different aspects of the English language including lexis and semantics, grammar and discourse. Students will also explore issues such as language and power and how language has changed over time

PREFERRED ENTRY REQUIREMENTS:

At least grade 5 at GCSE English language and English literature.

UNITS STUDIED:

- **Unit 1:** Language concepts and issues
- **Unit 2:** Language change over time
- **Unit 3:** Creative and critical use of language
- **Unit 4:** Language and identity

EXAM BOARD: Eduqas

COURSE ASSESSMENT DETAILS:

This course is assessed through examinations (80%) and coursework assignments (20%).

PROGRESSION AND CAREER OPPORTUNITIES:

An A-level in English language will particularly suit those looking to study or work in the following areas: teaching, linguistics, media, journalism, law, film & TV, advertising and the public sector.





English Literature

A Level

BRIEF DETAILS:

The course involves the study of prose, drama and poetry texts, including Shakespeare. You will develop and extend your literary knowledge and also improve your skills of textual analysis. You will be studying a range of texts and choices will vary each year. For example, students will study a play by Shakespeare, for example 'Hamlet' and also a modern drama such as 'Death of a Salesman'. You will also explore a prose genre, for example the gothic. To be successful in this subject you need to enjoy the challenge of reading more difficult texts and be prepared to study independently.

PREFERRED ENTRY REQUIREMENTS:

At least grade 5 at GCSE English language and English literature.

UNITS STUDIED:

- **Unit 1:** Shakespeare, drama and poetry pre-1900
- **Unit 2:** Modern drama and contextual study of prose texts
- **Unit 3:** Coursework

EXAM BOARD: OCR

COURSE ASSESSMENT DETAILS:

This course is assessed through examinations (80%) and coursework assignments (20%).

PROGRESSION AND CAREER OPPORTUNITIES:

An A-level in English literature will particularly suit those looking to study or work in the following areas: teaching, law, media, film & TV, theatre, journalism and the public sector.





French

A Level

BRIEF DETAILS:

The study of A-level French gives students the opportunity to broaden their knowledge of the French language beyond GCSE. It enables students to communicate effectively, both in spoken and written form, on a variety of topics which are of interest to young people today. It enhances the cultural dimension of studying a language and increases students' European and global awareness.

PREFERRED ENTRY REQUIREMENTS:

Grade 5 or higher at GCSE French

UNITS STUDIED:

- **Unit 1:** Aspects of French-speaking society; current trends e.g. the cyber-society
- **Unit 2:** Artistic culture in the French-speaking world; French cinema and music
- **Unit 3:** Aspects of French-speaking society; current issues e.g. diversity
- **Unit 4:** Aspects of political life in the French-speaking world e.g. immigration

EXAM BOARD:AQA

COURSE ASSESSMENT DETAILS:

This course is assessed entirely through final examinations.

PROGRESSION AND CAREER OPPORTUNITIES:

An A-level qualification in French provides a suitable foundation for the study of French at university. Increasingly French is combined with other subjects at university to provide an extra dimension to one's studies, for example, in business and management. It can also lead to the study of other languages such as Russian, Chinese or Japanese. Organisations are often looking for candidates with additional skills and having a good knowledge of another language could be part of that skill set.



Geography

A Level

BRIEF DETAILS:

Geography is a robust subject that helps students make sense of and understand their place in the world. The subject covers many aspects of both the human and natural world including rivers, global health systems, tectonics, climate change and globalisation. Geography students also have the opportunity to exercise and develop numerous cross-curricular skills.

PREFERRED ENTRY REQUIREMENTS:

Grade 5 or higher at GCSE geography.

UNITS STUDIED:

- **Unit 1:** Dynamic landscapes (tectonic hazards, glaciers or coasts)
- **Unit 2:** Dynamic places (globalisation, diverse places)
- **Unit 3:** Physical systems & sustainability (water cycle, carbon cycle)
- **Unit 4:** Human systems & geopolitics (superpowers, development, health, human rights and intervention)

EXAM BOARD: Edexcel

COURSE ASSESSMENT DETAILS:

This course is assessed through examinations (80%) and an independent fieldwork investigation (20%).

PROGRESSION AND CAREER OPPORTUNITIES:

Geography is highly valued by many employers and higher education providers because of the range of skills used including communication, data handling and manipulation, research and IT. Previous students have gone on to work in local government, education, tourism and environmental agencies amongst others



German

A Level

BRIEF DETAILS:

The study of A-level German gives students the opportunity to broaden their knowledge of the German language beyond GCSE. It enables students to communicate effectively, both in spoken and written form, on a variety of topics which are of interest to young people today. It enhances the cultural dimension of studying a language and increases students' European and global awareness.

PREFERRED ENTRY REQUIREMENTS:

Grade 5 or higher at GCSE German.

UNITS STUDIED:

- **Unit 1:** Aspects of German-speaking society; current trends e.g. fashion and music
- **Unit 2:** Artistic culture in the German-speaking world e.g. festivals
- **Unit 3:** Multiculturalism in German-speaking countries e.g. integration
- **Unit 4:** Aspects of political life in the German-speaking world e.g. reunification

EXAM BOARD: AQA

COURSE ASSESSMENT DETAILS:

This course is assessed entirely through final examinations.

PROGRESSION AND CAREER OPPORTUNITIES:

An A-level qualification in German provides a suitable foundation for the study of German at university. Increasingly German is combined with other subjects at University to provide an extra dimension to one's studies, for example, in business and management. It can also lead to the study of other languages such as Russian, Chinese or Japanese. Organisations are often looking for candidates with additional skills and having a good knowledge of another language could be part of that skill set.

Cambridge
Technical
Extended
Certificate

Health & Social Care

Cambridge Technical Extended Certificate

BRIEF DETAILS:

This course isn't just about caring for babies or the elderly and the ill, it will provide learners with the skills, knowledge and understanding to progress into higher education on a health and social care-related programme such as nursing, social work or early childhood studies.

PREFERRED ENTRY REQUIREMENTS:

Grade 4 at GCSE English. There is no requirement to have studied the subject previously, although the subject does support progression from level 2 in health and social care and child development.

UNITS STUDIED:

- **Unit 1:** Building positive relationships
- **Unit 2:** Equality, diversity and human rights
- **Unit 3:** Health and safety
- **Unit 10:** Nutrition for health
- **Unit 13:** Sexual health and early development

EXAM BOARD: OCR

COURSE ASSESSMENT DETAILS:

This course is assessed through examinations (50%) and coursework assignments (50%).

PROGRESSION AND CAREER OPPORTUNITIES:

This level 3 qualification in health and social care would be of great benefit to those seeking experience or careers in childcare, nursing, paediatrics, midwifery, social work, teaching, police officer, probation officer, youth offending teams, medicine, paramedics, health visitor, mental health and counselling.

History

A Level

BRIEF DETAILS:

A-level history is a rich and varied course, covering social, economic and political change in different time periods and countries. It is an academically challenging but intellectually satisfying subject. In addition to interesting topics, the study of History at A-level develops skills in research, building and arguing a case, decision making, interpreting evidence and understanding the causes and impacts of significant historical events.

PREFERRED ENTRY REQUIREMENTS:

At least grade 5 at GCSE history and grade 5 at GCSE English.

UNITS STUDIED:

- **Unit 1:** England 1445-1501 - Lancastrians, Yorkists and Henry VII, with a focus on the War of the Roses
- **Unit 2:** Russia 1894-1941
- **Unit 3:** The Changing Nature of Warfare 1792-1945
- **Unit 4:** Coursework assignment

EXAM BOARD: OCR

COURSE ASSESSMENT DETAILS:

This course is assessed through final examinations (80%) and coursework (20%).

PROGRESSION AND CAREER OPPORTUNITIES:

History is an excellent course to study. It is recognised as being beneficial to a wide range of careers, including journalism, management, consultancy, politics, law and teaching. The skills gained are seen as valuable to any line of work, as it builds transferable skills in argument building, interpreting and evaluating opinions, making inferences and researching independently. History is therefore an enabling A-level, and can be utilised for applying to any degree course through UCAS. It is no coincidence that history, at both GCE and graduate level, is one of the most employable subjects to study.

IT

Cambridge Technical Introductory Diploma



BRIEF DETAILS:

This qualification is designed for learners who want to develop their knowledge and understanding of the principles of IT and global information systems. It is not just about being able to use computers. Students will learn to be able to develop applications, use IT as a tool to analyse data, information systems and consider wider reaching global issues such as IT security.

PREFERRED ENTRY REQUIREMENTS:

There are no formal entry requirements for this qualification or any specific prior learning requirements. An initial assessment will take place to ensure the learner is capable of reaching the required standards.

UNITS STUDIED:

- **Unit 1:** Fundamentals of IT
- **Unit 2:** Global information
- **Unit 3:** App design
- **Unit 4:** Social media and digital marketing
- **Unit 5:** Web design and prototyping

EXAM BOARD: OCR

COURSE ASSESSMENT DETAILS:

This course is assessed through coursework assignments (50%) and examinations (50%).

PROGRESSION AND CAREER OPPORTUNITIES:

Achievement of this qualification can support progression to enter an apprenticeship, move directly into employment, or study relevant IT degrees in a higher education institution, for example, computing and IT, computer science, software development, software engineering, ICT and computer networks or business information systems.

Level Law

A Level

BRIEF DETAILS:

Law is a subject that provides a detailed understanding of the principles of English law, including how the law is made and how it is applied. It helps students develop a wide range of transferable skills such as critical analysis and debate, as well as independent thought.

PREFERRED ENTRY REQUIREMENTS:

At least grade 5 at GCSE English and grade 5 at a humanities subject.

UNITS STUDIED:

- **Unit 1:** Law making and the legal system
- **Unit 2:** Criminal law
- **Unit 3:** Tort law
- **Unit 4:** Contract law

EXAM BOARD: AQA

COURSE ASSESSMENT DETAILS:

This course is assessed entirely through examinations.

PROGRESSION AND CAREER OPPORTUNITIES:

An A-level in law is particularly valuable to those students wishing to pursue a number of different careers in the criminal justice system such as barrister, solicitor, the police or prison system. It is also useful for those pursuing careers in social or community work or journalism as well as providing a sound basis for studying law at university.



Level Mathematics

A Level



BRIEF DETAILS:

Mathematics at A-level is both challenging and interesting and it builds on topics you have met at GCSE level. It is particularly suited to people who enjoy problem solving and logical reasoning and is highly useful supporting physics, chemistry, geography, psychology and sociology.

PREFERRED ENTRY REQUIREMENTS:

At least grade 7 at GCSE maths.

UNITS STUDIED:

- **Unit 1:** Pure mathematics
- **Unit 2:** Statistics
- **Unit 3:** Mechanics

EXAM BOARD: MEI

COURSE ASSESSMENT DETAILS:

This course is assessed entirely through final examinations.

PROGRESSION AND CAREER OPPORTUNITIES:

A-level mathematics is a much sought after qualification for entry to a wide variety of courses in higher education. There are many areas of employment that see a maths A-level as an important qualification, from finance to engineering to medicine..

Mathematics, Further

A Level

BRIEF DETAILS:

Further mathematics is one of the most highly respected subjects offered at A-level. It is recognised by the very top universities for its challenging content and is therefore an excellent qualification to obtain.

PREFERRED ENTRY REQUIREMENTS:

At least grade 8 at GCSE maths and to be studying A- level maths.

UNITS STUDIED:

- **Unit 1:** Further pure mathematics
- **Unit 2:** Decision mathematics
- **Unit 3:** Numerical methods
- **Unit 4:** Modelling with algorithms
- **Unit 5:** Statistics

EXAM BOARD: MEI

COURSE ASSESSMENT DETAILS:

This course is assessed entirely through final examinations.

PROGRESSION AND CAREER OPPORTUNITIES:

Further mathematics is particularly popular with students going on to study degree level mathematics, engineering or sciences. Career opportunities range from financial, e.g. accounting to scientific e.g. medicine



Music

A Level

BRIEF DETAILS:

Music develops skills in performing, composing and appraising. The course explores musical understanding through theory and analysis and encourages musicians to sing and play together. Whilst the three elements are externally assessed, they are taught together.

PREFERRED ENTRY REQUIREMENTS:

- c. Grade V ABRSM instrumental practical exam
- c. Grade IV/V ABRSM theory

COMPONENTS STUDIED:

- **Unit 1:** Performing
- **Unit 2:** Composing
- **Unit 3:** Appraising

EXAM BOARD: Eduqas

COURSE ASSESSMENT DETAILS:

This course is assessed entirely through examinations.

PROGRESSION AND CAREER OPPORTUNITIES:

A-level music is essential for progression to study music in higher education. The course offers a way into performing, studying composition or musicology.





PE

A Level

BRIEF DETAILS:

A-level PE is perfect for students who want to develop their own personal sport within a rigorous A-level course. The theoretical aspects of the course look at applied anatomy and exercise physiology, biomechanical movement, skill acquisition, sport psychology, sport and society and the role of technology in physical activity and sport. A-level PE will also develop students' knowledge and understanding of their own practical performance, ensuring effective and efficient performance. If you play sport to a high level and want to develop a greater understanding of your sport and how to improve your performance, then A-level PE is for you!

PREFERRED ENTRY REQUIREMENTS:

Grade 4 at GCSE English and maths, grade 5 at GCSE science.

UNITS STUDIED:

- **Unit 1:** Exploring concepts in physical education
- **Unit 2:** Evaluation physical education and sport
- **Unit 3:** Improving personal performance in physical education

EXAM BOARD: WJEC

COURSE ASSESSMENT DETAILS:

This course is assessed through examinations (70%), practical sports performance (15%) and investigative research (15%).

PROGRESSION AND CAREER OPPORTUNITIES:

Combined with A-level subjects such as biology, sociology and psychology, you will be equipped to study sport science related degrees such as sport management, sport therapy, teaching, sport coaching and physiotherapy. Careers exist in a range of sports industries, from sports development and coaching, to sales, marketing and media.



Physics

A Level

BRIEF DETAILS:

Physics is a subject that enables students to develop an understanding of the world in which they live; from the vast cosmos and the origins of the universe to the smallest theoretical particle discovered in the LHC particle accelerator. This is achieved through the further study of physics theory, building on GCSE, the application of mathematics to problem solving and the use of practical and investigative skills to support theory. As a demanding subject, physics requires determination, hard work and a natural interest in how the world works.

PREFERRED ENTRY REQUIREMENTS:

Grade 5 or above at GCSE science, English and maths is the minimum requirement. Grade 6 in maths is highly recommended as the course is highly mathematical in nature.

UNITS STUDIED:

- **Unit 1:** Forces and motion
- **Unit 2:** Electrons, waves and photons
- **Unit 3:** Newtonian world and astrophysics
- **Unit 4:** Particles and medical physics

EXAM BOARD: OCR

COURSE ASSESSMENT DETAILS:

This course is assessed entirely through final examinations.

PROGRESSION AND CAREER OPPORTUNITIES:

Students who have studied A-level physics have progressed onto degree courses involving physics, mechanical engineering, electrical engineering, sound engineering, robotics, electronics, cybernetics, veterinary science, mathematics, optometry and many other science and non-science based courses. Such courses lead to opportunities to work in a range of physics based vocations including teaching, research science, media, computing and medical science.

Psychology

A Level

BRIEF DETAILS:

Psychology A-level provides an introduction to different psychological perspectives on topics such as memory, social influence and relationships. Students develop analytical skills which are transferable to other A-level subjects. Students are encouraged to develop personal opinions and learn to express them appropriately; a skill which is essential across all humanities subjects.

PREFERRED ENTRY REQUIREMENTS:

Grade 5 at GCSE science, grade 4 at GCSE maths and grade 5 at GCSE English.

UNITS STUDIED:

- **Unit 1:** Introductory topics in psychology
- **Unit 2:** Psychology in context
- **Unit 3:** Issues and options in psychology

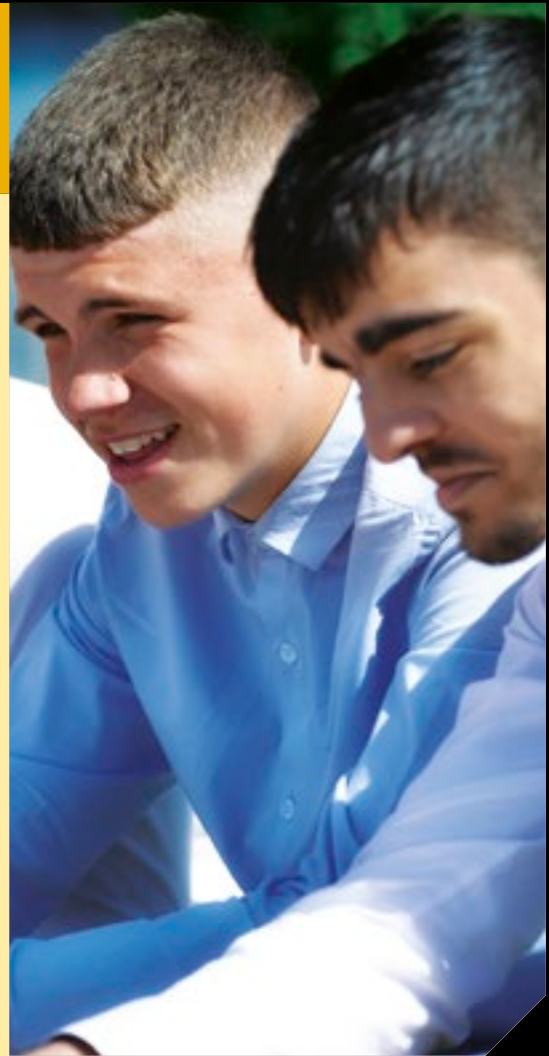
EXAM BOARD: AQA (A)

COURSE ASSESSMENT DETAILS:

This course is assessed entirely through examinations.

PROGRESSION AND CAREER OPPORTUNITIES:

An A-level in psychology is useful in a variety of different careers. Anyone wishing to study psychology at university in order to progress to a career as a psychologist will find A-level study a useful introduction. It also has application to other careers such as work within the criminal justice system, the media, counselling, social services and any work involving interaction with the public.



Religious Studies

A Level



BRIEF DETAILS:

Through a rigorous study of religion, philosophy and ethics, RS aims to develop your understanding of the wider world and the role religion plays in influencing individuals, communities and societies. Through a critical and reflective study of religion, you will develop your own ideas on some of the most important, complex and long lasting questions that humans face.

PREFERRED ENTRY REQUIREMENTS:

At least grade 5 at GCSE RS and grade 5 at GCSE English.

UNITS STUDIED:

- **Unit 1:** Religion and ethics, including the understanding and application of ethical theory to important moral issues
- **Unit 2:** Philosophy of religion, including arguments for and against the existence of God, religious language and the problem of evil
- **Unit 3:** A systematic study of the development of Christian thought, looking at the influence of eminent thinkers such as Plato and St. Augustine, through to the impact of feminism and secularism

EXAM BOARD: OCR

COURSE ASSESSMENT DETAILS:

This course is assessed entirely through examinations.

PROGRESSION AND CAREER OPPORTUNITIES:

An A-level in RS can be of value to those considering degree courses such as religious studies, theology, philosophy, history, politics, law, English, sociology and the social sciences. The focus on understanding religion and belief alongside the development of critical and reflective thinking makes it highly valued by employers, especially in those jobs that involve working with people.



Sociology

A Level

BRIEF DETAILS:

Sociology at A-level gives students a chance to examine in analytical detail the society in which they live. It covers a range of social issues, such as crime and education and allows students to develop the ability to gain fresh insights into issues relevant to their lives and pertinent to their future. Students will also develop a wide range of transferable skills such as critical analysis, debating and independent thinking.

PREFERRED ENTRY REQUIREMENTS:

Minimum grade 5 at GCSE English.

UNITS STUDIED:

- **Unit 1:** Education with theory and methods
- **Unit 2:** Topics in sociology - families and households and beliefs in society
- **Unit 3:** Crime and deviance with theory and methods

EXAM BOARD: AQA

COURSE ASSESSMENT DETAILS:

This course is assessed entirely through final examinations.

PROGRESSION AND CAREER OPPORTUNITIES:

Sociology is particularly valuable for students wishing to work in a number of different fields such as policing and work within the criminal justice system, social and community work, nursing and journalism.

In terms of higher education sociology has links with degree courses in sociology, criminology, politics and government, philosophy, psychology, economics, social and community studies, nursing and youth and childhood studies.



Sport

Cambridge Technical Extended Certificate

BRIEF DETAILS:

Sport is an excellent vocational course that allows students the opportunity to develop their knowledge of sport and the wider sports industry. The course is suited to learners wanting to study in preparation for employment in a sports industry or for those wanting to move onto a higher education sport degree.

PREFERRED ENTRY REQUIREMENTS:

Grade 4 at GCSE English (there is no requirement to have studied the subject at GCSE)

UNITS STUDIED:

- **Unit 1:** Body systems and the effects of physical activity
- **Unit 2:** Sports coaching and leadership
- **Unit 3:** Sports organisation and development
- **Unit 4:** Organisation of sports events
- **Unit 5:** Sports nutrition
- **Unit 6:** Practical skills in sport and physical activities

EXAM BOARD: OCR

COURSE ASSESSMENT DETAILS:

This course is assessed through coursework assignments and examinations.

PROGRESSION AND CAREER OPPORTUNITIES:

The Cambridge Technical is ideal for those students looking to study or have a career in nutrition, media, sports management, coaching, teaching, fitness and exercise and many other exciting careers in the sports industry.

* NEW COURSE & OPTIONS...

POST 16
foundation
year

Post-16 Foundation Year (Level 2)



This course is designed to start you on an exciting journey studying business and information technology. Successful completion of this course in Year 12 will allow you to move onto some of our Level 3 courses and spend a further two years with us. It involves studying the qualifications shown below...

btec

Business Administration BTEC Level 2 Technical



UNITS STUDIED:

- **Unit 1:** Understanding administrative services
- **Unit 2:** Providing administrative services
- **Unit 3:** Using business technology to process and communicate information
- **Unit 4:** Planning, organising and supporting business events

EXAM BOARD: Edexcel

COURSE ASSESSMENT DETAILS:

This course is assessed through coursework assignments and examinations.



Cambridge
Technical
Extended
Certificate

Information Technology Cambridge Technical Extended Certificate



UNITS STUDIED:

- **Unit 1:** Exam - Essentials of IT
- **Unit 2:** Exam - Cybersecurity
- **Unit 3:** Coursework - using data analysis software
- **Unit 4:** Coursework - using social media channels for business

EXAM BOARD: OCR

COURSE ASSESSMENT DETAILS:

This course is assessed through coursework assignments and examinations.

ENTRY REQUIREMENTS FOR POST 16 FOUNDATION YEAR

Entry onto this course is subject to a satisfactory school reference and interview.

WHAT TO DO NEXT

- 1 Visit our Open Evening
- 2 Contact us for more information
- 3 Come and visit us
- 4 Take a look at our website www.haslingdensixth.com



Haslingden High School
Sports Leadership Academy

Sports Leadership Academy Haslingden High School

*** NEW COURSE**

BRIEF DETAILS:

Students will study the Level 3 Cambridge Technical Extended Diploma in sport (equivalent to 3 A levels), and gain the sports leadership skills that will provide you with the knowledge and practical skills to succeed in sport-related courses at university or in sport-related employment.

Units covered include: body systems, sports coaching, sports organisation and development, working safely in sport, performance analysis, improving fitness for sport, organising sports events, sports biomechanics, physical activity for specific groups, nutrition, health and fitness testing, work in active leisure, sports injuries, practical skills, sports psychology, sports sociology and the business of sport.

The course also offers exciting leadership opportunities, including: NGB coaching / officiating qualifications in your chosen sport, first aid and safeguarding training, work placements, sports visits and lectures and priceless time in the PE Faculty leading/ supporting experienced PE staff.

EXAM BOARD: OCR

COURSE ASSESSMENT DETAILS:

This course is assessed through 4 examination units and 13 coursework units.

PROGRESSION AND CAREER OPPORTUNITIES:

This course is ideal for those students who only want to study sport in Sixth Form and want to then move onto sport-related courses at university or into sport-related employment. These may include PE teaching, sports nutrition, sports management, fitness and exercise.

Broadway | Haslingden | Lancashire | BB4 4EY
t: 01706 215726 e: sixthform@haslingdenhigh.com
Headteacher: Mark Jackson BSc MA

www.haslingdensixth.com



@SixthFormHHS

2020 / 2021 Course Information

TAKING
CARE OF
YOUR
FUTURE