

BERKWOOD



resources ltd

TSX-V: BKR FSE: BR2N WKN:A2DNV4



THE POWER OF GRAPHITE!

SEPTEMBER 2019

Except for historical information, this presentation may contain certain “forward-looking” statements and information relating to Berkwood that are based on the beliefs of Berkwood management, as well as assumptions made by and information currently available to Berkwood management. Such statements reflect the current risks, uncertainties and assumptions related to certain factors including but not limited to, without limitations, exploration and development risks, expenditure and financing requirements, title matters, operating hazards, metal prices, political and economic factors, competitive factors, general economic conditions, relationships with vendors and strategic partners, governmental regulation and supervision, seasonality, technological change, industry practices, and one-time events. Should any one or more risks or uncertainties materialize or change, or should any underlying assumptions prove incorrect, actual results and forward-looking statements may vary materially from those described herein. Berkwood does not assume the obligation to update any forward-looking statement.

The factors that could cause actual results to differ materially include, but are not limited to, the following: general economic conditions; changes in financial markets; the impact of exchange rates; political conditions and developments in countries in which the Company operates; changes in the supply, demand and pricing of the metal commodities which the Company mines or hopes to find and successfully mine; changes in regulatory requirements impacting the Company’s operations; the ability to properly and efficiently staff the Company’s operations; the sufficiency of current working capital and the estimated cost and availability of funding for the continued exploration and development of the Company’s exploration properties.

This list is not exhaustive and these and other factors should be considered carefully, and readers should not place undue reliance on the Company’s forward-looking statements. As a result of the foregoing and other factors, no assurance can be given as to any such future results, levels of activity or achievements and neither the Company nor any other person assumes responsibility for the accuracy and completeness of these forward-looking statements.

The Mason Graphite NI 43-101 mineral resource estimate and other information was sourced from the Mason Graphite news releases. The Qualified Person did not verify the information contained within the Mason Graphite news release and the mineralization on the Mason Graphite property is not necessarily indicative of the mineralization on the Company’s property.

2019 Graphite 43-101 Resource *

DMineral Resource Category	Current Resource (June 2019) ⁸			Cut off (% Cgr) ³
	Tonnage (Mt) ^{5,7}	Grade (% Cgr) ³	Cgr (t) ⁶	
Indicated	1,76	17.00	299,200	6.81%
Inferred ⁴	1,53	16.4	250,200	6.81%

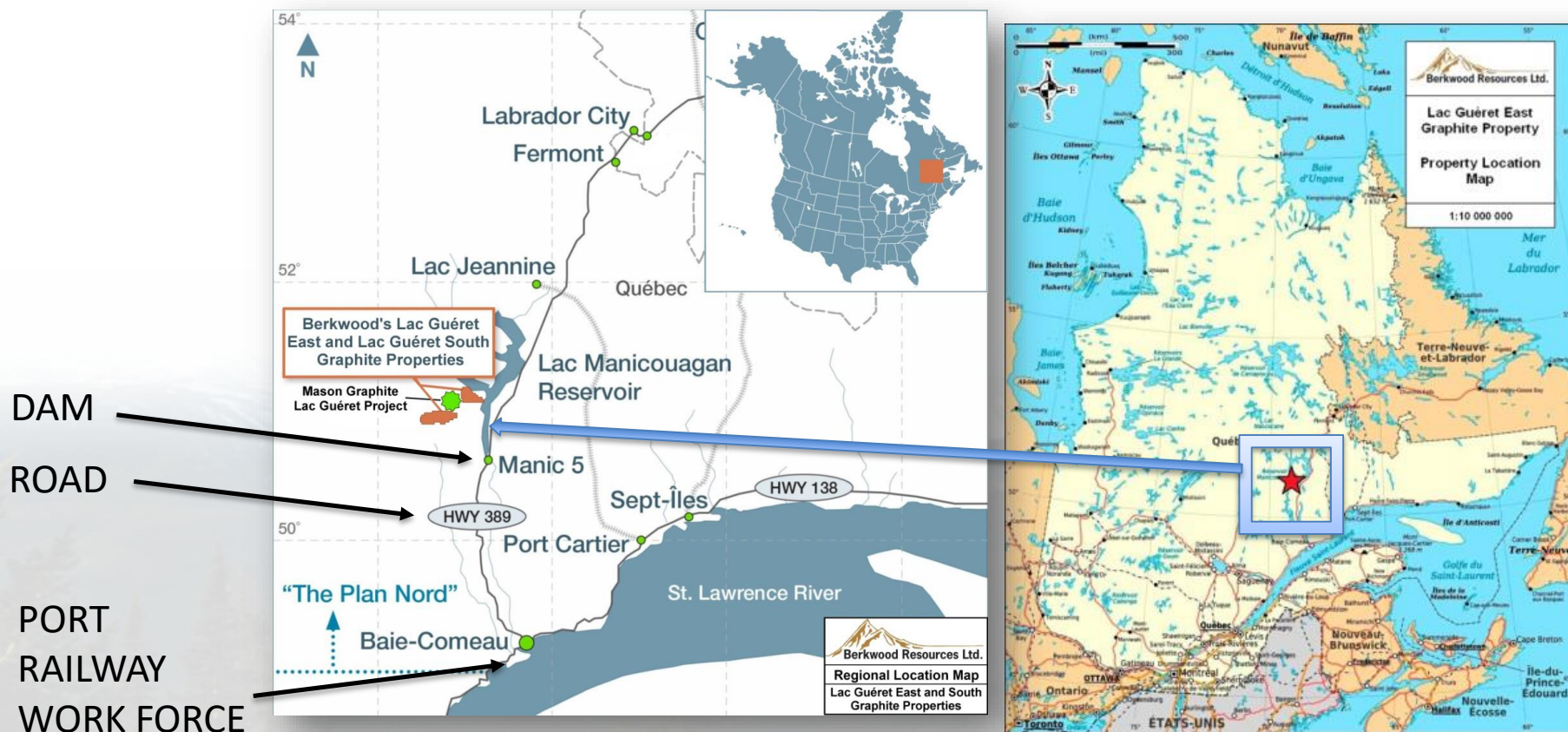
Parameters	Values
Mining Cost	6 \$/t
Transport	36 \$/t
Processing	40 \$/t
G & A	10 \$/t
Recovery	90 %
Selling Price Cg	1,530 \$/t

Characteristics	Main	Layer 01
Length (m) ¹	290	340
Azimuth (°)	80	42
Maximum width (m)	130	35
Surface Area (km ²)	0.13	

* See News Release: Aug 19th 2019: **Berkwood files robust pit constrained mineral resources at its Lac Guéret South Project on SEDAR**

- A deposit that is on surface
 - o Making it very economical
 - o As it is only based on an open pit of 80m depth we will have low strip ratios which has a lower environmental impact as well as lower cost.
- Flake size is 80% Large to Jumbo with our graphite that is 6.81% to 15%
- Flake size is 70% Large to Jumbo with our graphite that is 16% to 35+%
- Making it some of the richest graphite on the planet.
- Metallurgical testing produced 97.8% grade from extraction.
- Our Ore host rock contains no bad pollutants that are costly and time consuming to remove. Making our graphite even more valuable.
- Location
 - o Quebec – rated top 5 designations to do mining in.
 - o Road access summer and winter
 - o Access to rail and sea port 3.5 hr drive away.

“The best place to look for a new mine is in the shadow of head frames.” Where there is one mine there is often others!

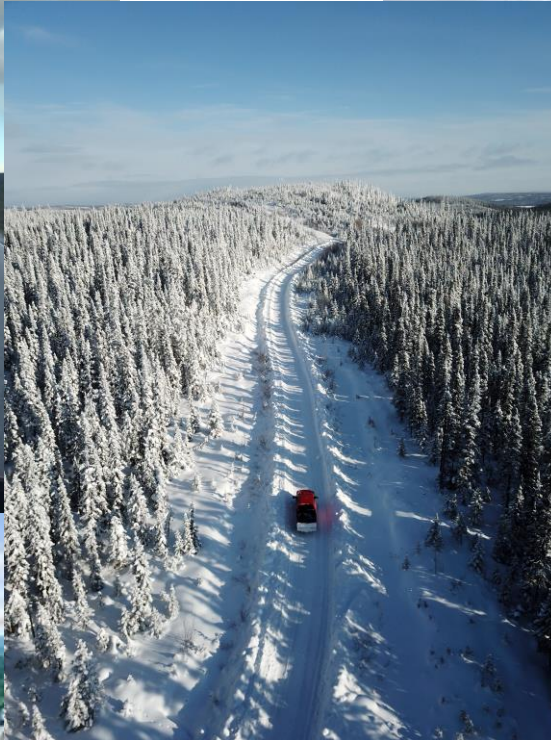


LOCATION – INFRASTRUCTURE

BERKWOOD

resources ltd

TSX-V: BKR Frankfurt: BR2N WKN: A2DNV4



- 1. BERKWOOD IS NOW ONE OF THE LARGEST LAND HOLDERS IN THE AREA.**
- 2. ADJACENT TO MASON GRAPHITE'S (TSX-LLG) MASSIVE GRAPHITE DEPOSIT. (10+m tonnes contained)**
 - GOING INTO PRODUCTION**
 - THEY HAVE DONE THE HEAVEY LIFTING.**
- 3. BERKWOOD ALSO HAS VANADIUM, COBALT AND LITHIUM PROJECTS IN QUEBEC.**
- 4. ROAD, POWER, WORK FORCE, PORT & PROPOSED GRAPHITE PLANT IN PLACE.**

- **The material is easily purified to 99.95% by the standard alkaline process.**
- **The material is very suitable for the production of expandable graphite, having achieved densities of 380 and 390 ml per gram.**
- **Size distribution of the graphite in the concentrate shows a coarse flake size, above average.**
- **Graphitic carbon grade of the concentrates produced is high at 97% Cgr.**

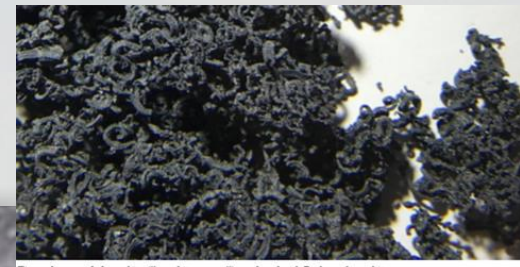


Figure 1. expanded graphite ("graphite worms") produced with Berkwood graphite

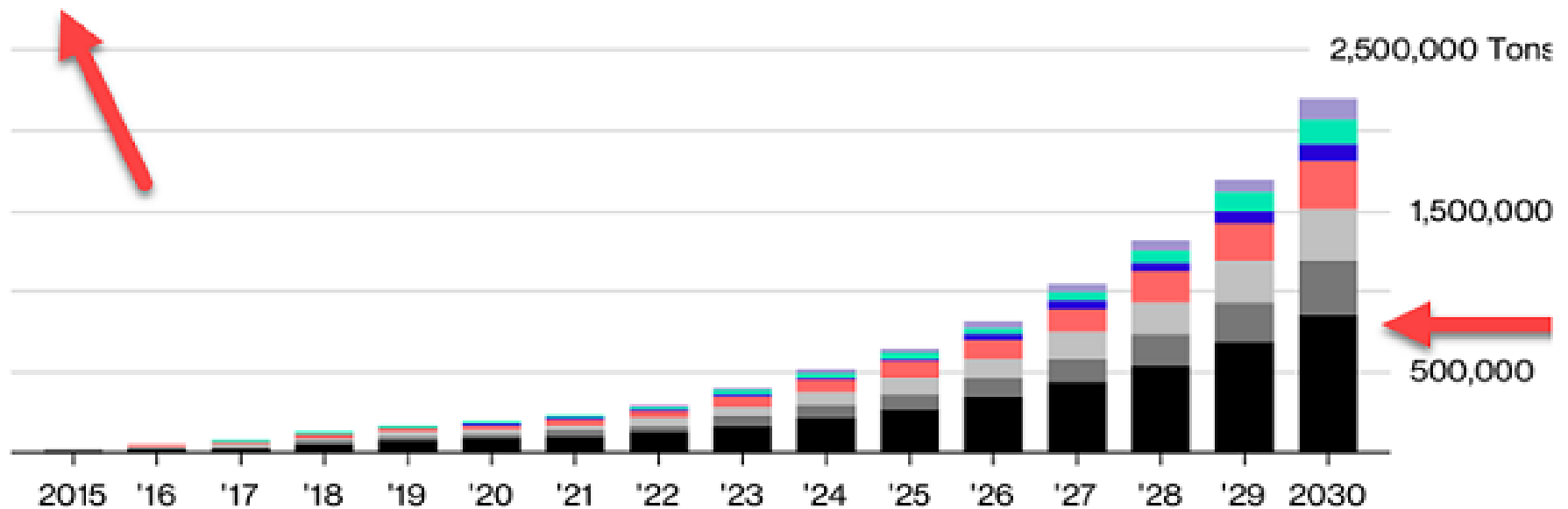
DEMAND FOR GRAPHITE IS GROWING

- EV DEMAND - 10 countries have mandated EV cars by 2030 to 2040
- SOLAR AND WIND FARMS - storing energy to sell at peak times
- HOME – batteries to store energy from solar roofs.

Metal Winners

Graphite demand is forecast to soar as electric vehicle market expands

■ Graphite ■ Nickel ■ Aluminum ■ Copper ■ Lithium ■ Cobalt ■ Manganese



Source: Bloomberg New Energy Finance

Bloomberg

BERKWOOD HAS LARGE AND JUMBO MESH (FLAKE) SIZE AND HIGH GRADE GRAPHITE

Graphite Product	Carbon Content %	Mesh Size	Graphite Size (micron)	Approximate Price US\$/t*
Jumbo Flake	94 – 97%	+48	+48	\$2,000
Large Flake	94 – 97%	-48 to +80	-48 to +80	\$1,300
Medium Flake	94 – 97%	-80 to +100	-80 to +100	\$1,100
Fine Flake	94 – 97%	-100 to +200	-100 to +200	\$750
Amorphous	80 – 85%	-200	-200	\$450
Synthetic	99.95%			+\$7,000

Source: Various

FLAKE or MESH SIZE = LARGE

Berkwood Announces Large Graphite Flake Characterization Results at Lac Gueret Project, Quebec March 8, 2018

Average Distribution of Graphite		
Size Range	Medium Cgr	High Cgr
20 to 50 Mesh	51.3%	47.1%
50 to 100 Mesh	28.7%	21.5%
Over 100 Mesh	20.1%	31.4%
	(6.81% -15%)	(15%-35%)

WE HAVE LARGE FLAKE AND HIGH GRADE GRAPHITE - THE TYPE IN DEMAND

97.8% grade from metallurgical testing


Classification	Size Fraction (US Mesh)	Weight %	Cgr (%)
Very Coarse	20 x 50	39.5	97.6
Coarse	50 x 100	50.0	98.0
Fine	100 x 200	10.4	98.0
	Total:	100.0	97.8

OUR TEAM


BERKWOOD

resources ltd

TSX-V: BKR Frankfurt: BR2N WKN: A2DNV4




Graphite drill core in Ore shack



James Rogers
Project
Manager

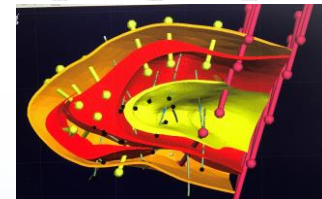
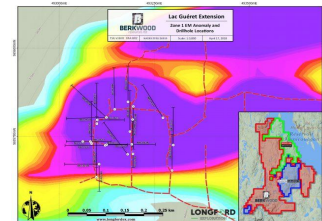
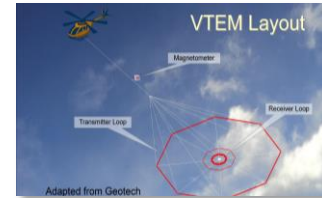
Tom Yingling
President and CEO

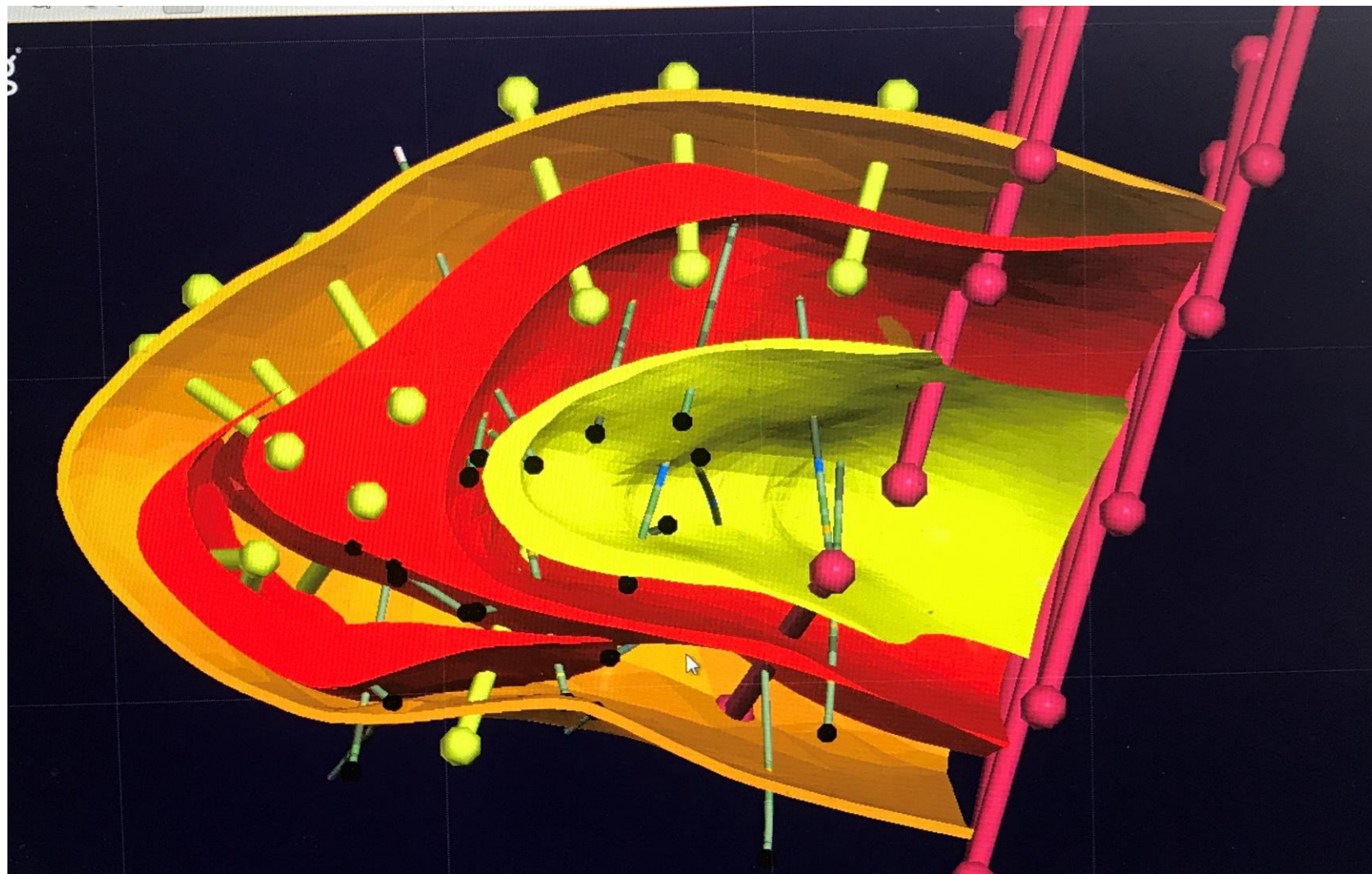


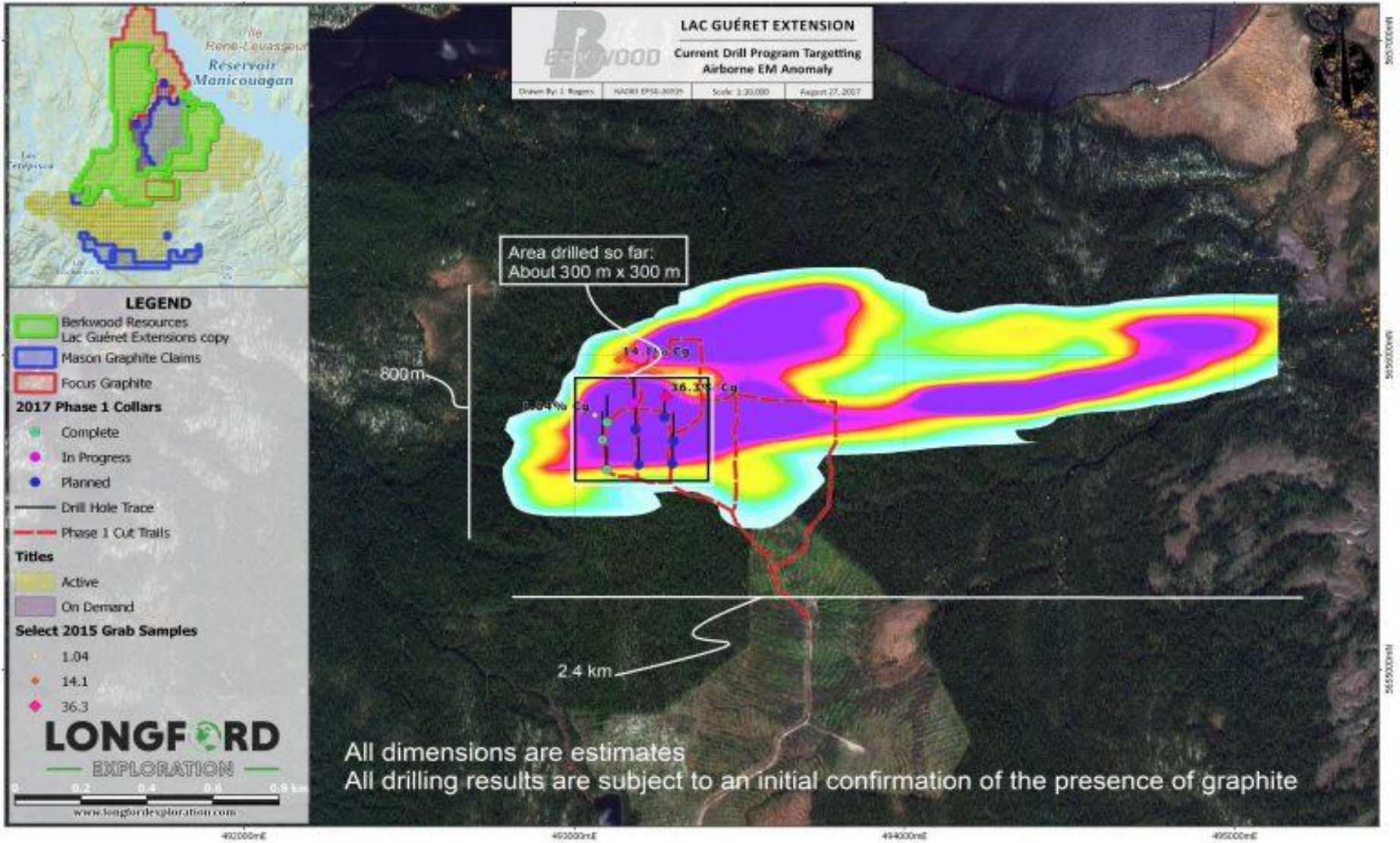
Mr. Ed Lyons, P. Geo, Q.P.
Responsible for developing
the Mason Graphite
deposit.

GRAPHITE INTERSECTED IN EVERY HOLE DRILLED!

- 2002** Heli Survey
- 2014** Air - Borne Geophysical Survey - Identified several large zones of conductivity
- 2015** Surveys were followed up with ground geophysics
- 2017** 3 drill programs completed for 27 holes and 4006m drilled
- 2018** 3D model created from the previous drill programs
Mise-A-La-Masse geophysical survey completed
Metallurgical testing completed. - excellent results
4th Drill program completed for 17 holes and 2084m drilled
3 large outcrops discovered
- 2019** 43-101 Resource Estimate Completed





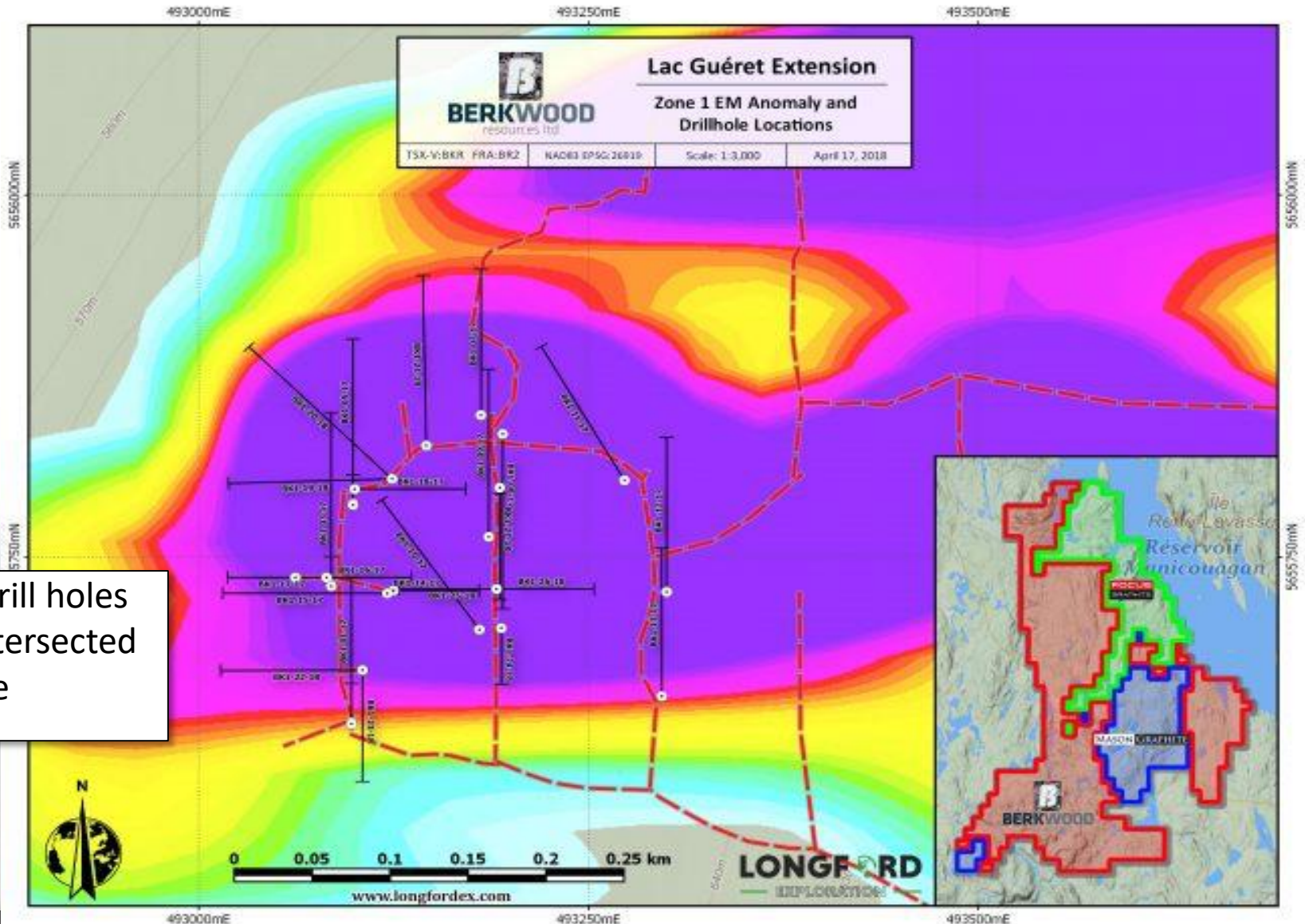


DRILL PROGRAM 1 TO 4

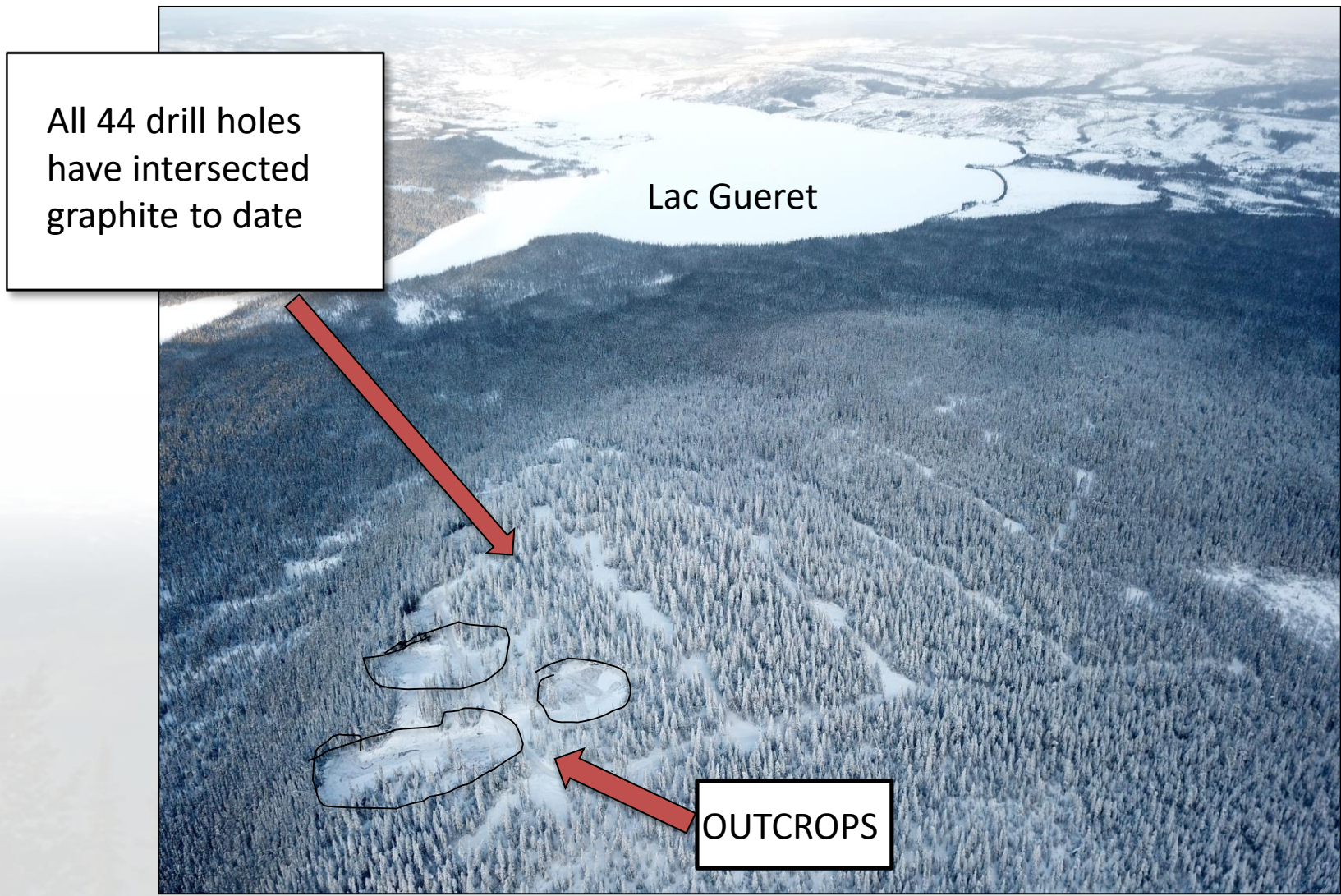
BERKWOOD

resources ltd

TSX-V: BKR Frankfurt: BR2N WKN: A2DNV4



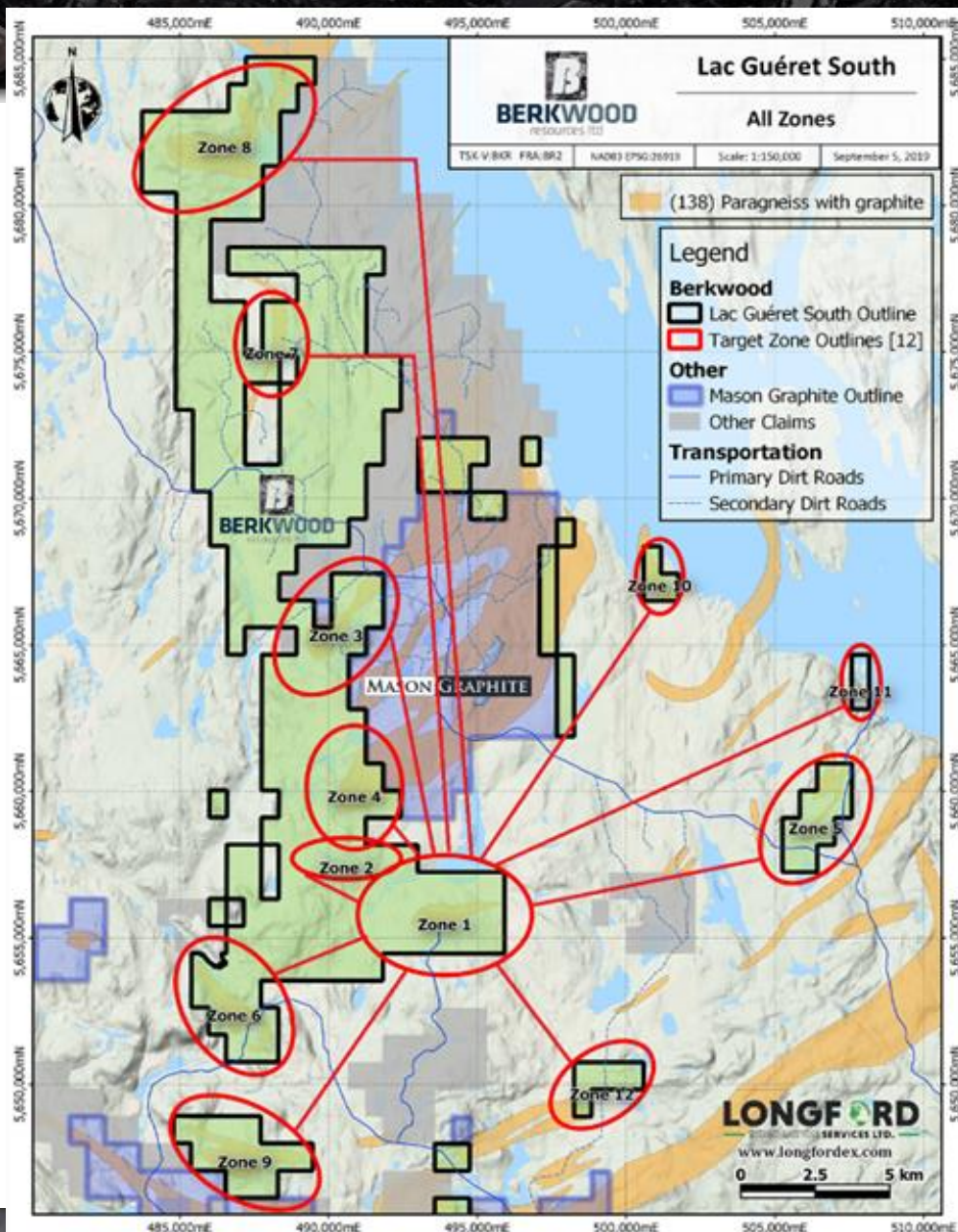
All 44 drill holes have intersected graphite



All 44 drill holes
have intersected
graphite to date

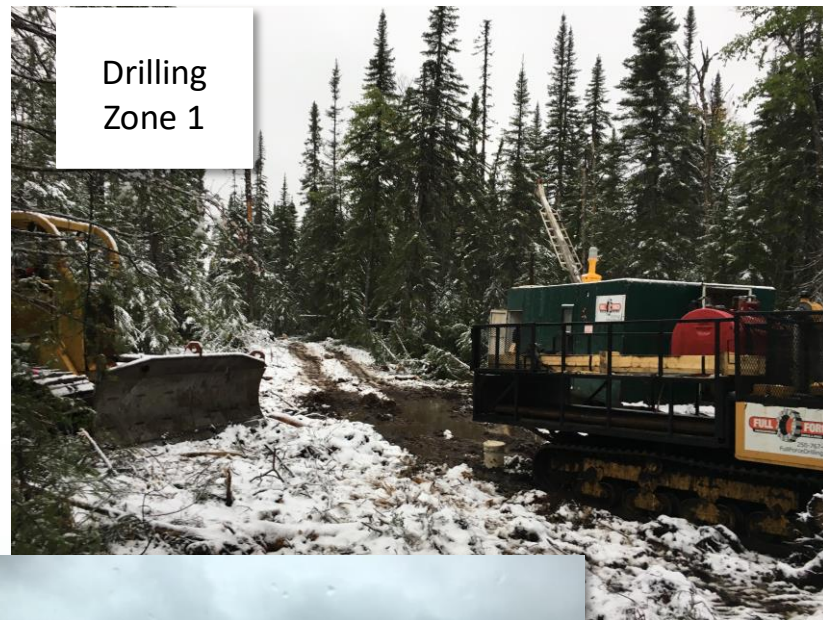
Lac Gueret

OUTCROPS





Graphite
Outcrop



Drilling
Zone 1



Inside
Drill Rig



Berkwood
Drill Camp

GRAPHITE

BERKWOOD

resources ltd

TSX-V: BKR Frankfurt: BR2N WKN: A2DNV4



Graphite outcropping



Channel sampling on Outcrop 1



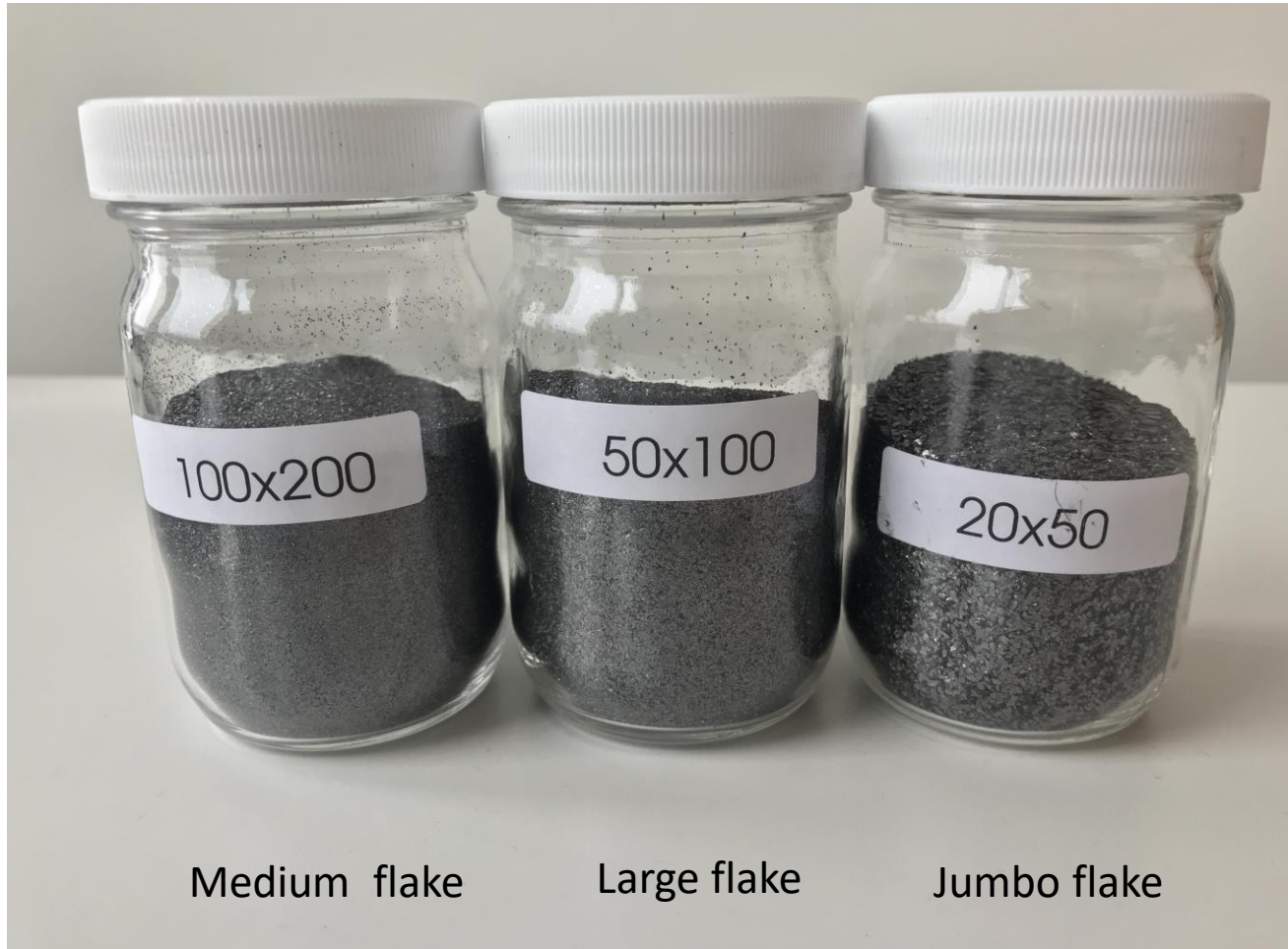
Inside drill rig



Outcrops 1 and 2

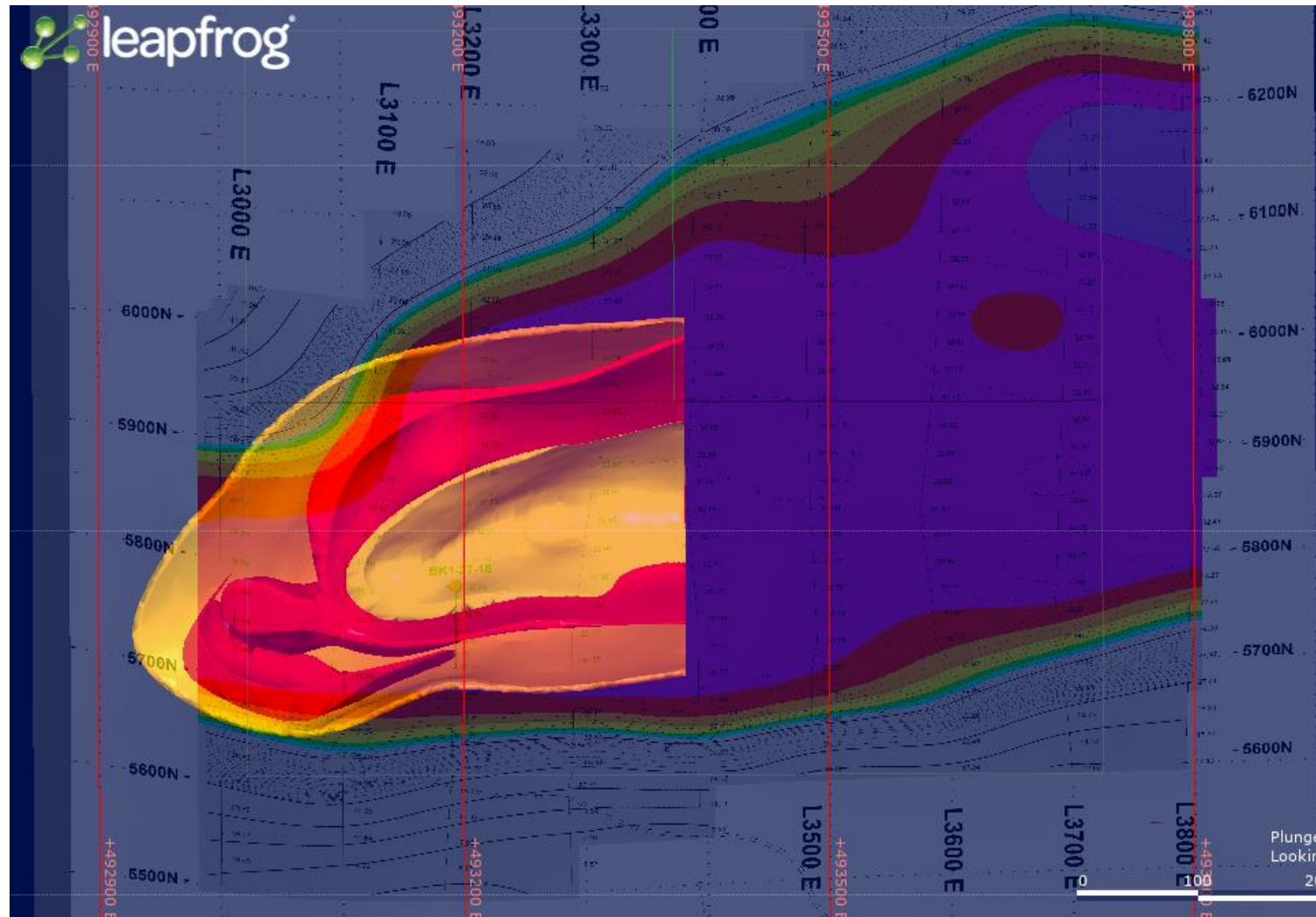


Outcrop
1 and 2

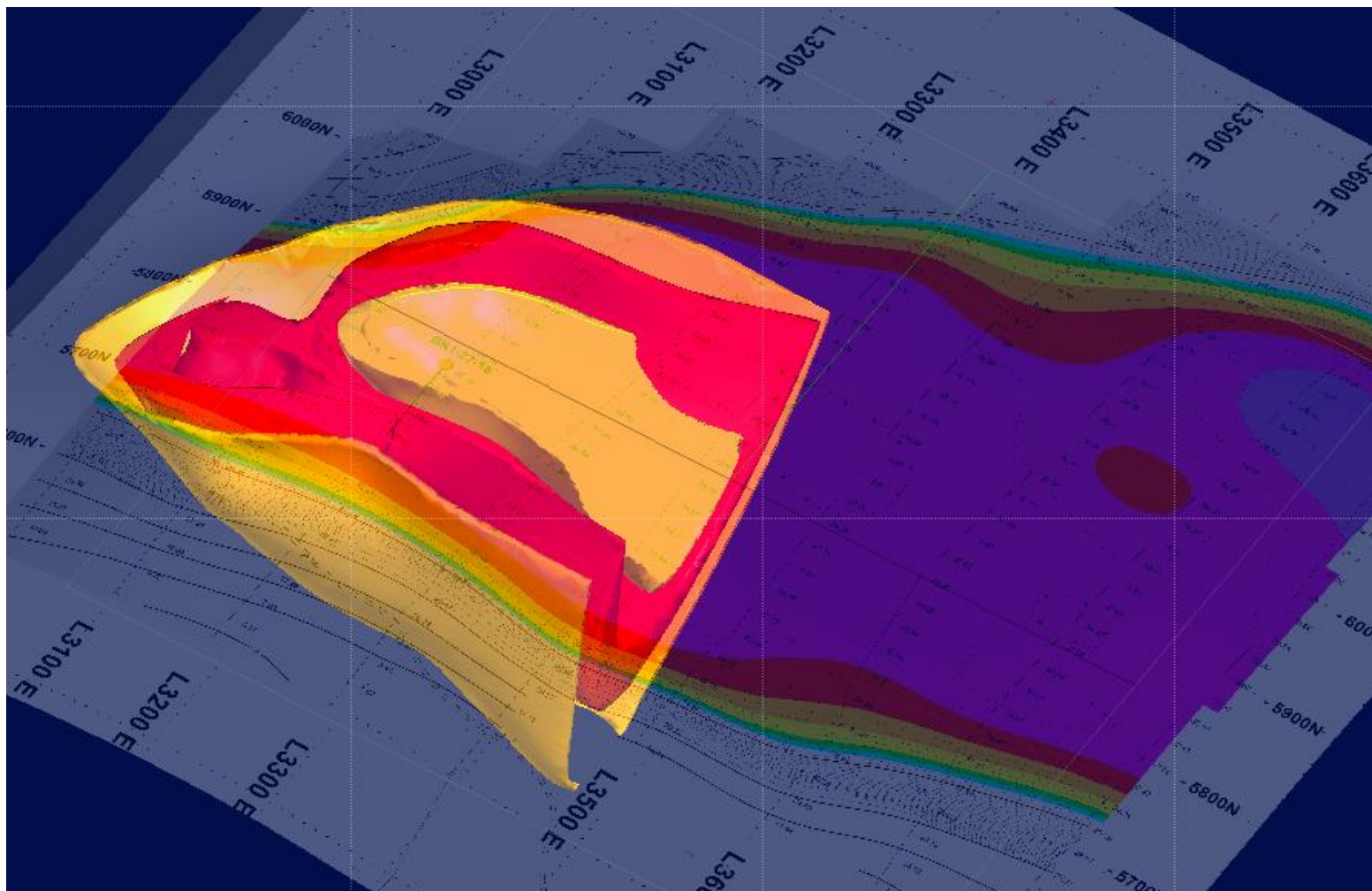


Samples ready to go to potential customers.

3 D MODEL OVERLAY WITH MALM



3 D MODEL OVERLAY WITH MALM



MANAGEMENT STRUCTURE

Our team members, Mr. Michel Robert and Mr. Ed Lyons, made the neighboring Mason Graphite discovery. Mr. Ed Lyons P. Geo., is Berkwood's Qualified Person under the national instrument 43-101.

Berkwood's Management has over 200 years experience collectively in the resource sector. Management has been successful in raising large capital to finance numerous successful resource projects.

Our team members have been instrumental in the numerous producing mines including Diavik Diamond Mine (Northwest Territories, Canada), Resolution Copper (Arizona, USA), Eagle Nickel (Michigan, USA), Lakeview Nickel (Minnesota, USA) and Bunder Diamonds (India).

BERKWOOD



resources ltd

TSX-V: BKR FSE: BR2N WKN:A2DNV4



THE POWER OF GRAPHITE!

Tom Yingling

Phone: (604) 343-7740

Email: tom@berkwoodresources.com

Hugh Oswald

Phone: (604) 838-2855

Email: info@berkwoodresources.com

www.berkwoodresources.com

Plugged into High Tech Minerals