



Honda Pilot

Northstar E™ Conversion



VMI Northstar E™

with Access360®

Manual In-Floor Ramp

VMI takes pride in producing the easiest to use, most accessible mobility solutions in the world. The Honda Pilot SUV with its innovative manual in-floor ramp offers the perfect combination of simplicity, space and style. You'll find exceptional wheelchair maneuverability and room for the family. It's equipped with practical features that put "utility" in the SUV, such as a ramp that's easily stowed out of the way, a removable front passenger seat for greater seating flexibility, and plenty of usable storage.





Our vehicles with Access360® set a new standard for wheelchair accessibility and maneuverability because they provide more of what you want and need. More space for large power chairs to enter the vehicle and maneuver comfortably, more flexibility with a removable front seat and confidence that it will deliver a superior experience.



Obstruction-Free Doorway

Safe entry and exit without deploying the ramp for able-bodied passengers.



In-Floor Ramp

Stowed ramp is protected within the vehicle floor with no squeaking or rattling and keeps dirt and debris out of the vehicle cabin.



Front and Mid-Row Access

Flexible seating lets wheelchair users sit in the front or mid row.



Easy Access

Enter and exit easily with VMI's expansive door opening width (33.5") and door height (55.5").



Spacious

Room for the whole family.



Step Flares

Stylish nerf bars provide a textured non-slip surface to assist access to the front seats.



Overhead, floor and door lighting makes wheelchair securement easier in low-light conditions.



All VMI conversions come with 3 year / 36,000 mile* warranty coverage!

**whichever comes first*



Engineered to minimize interior noise.



Rear Bench Footrest

VMI's footrest is easy to use and offers additional comfort for passengers seated on the rear bench.



VMI's integrated removable cup holder is convenient and easy to use.



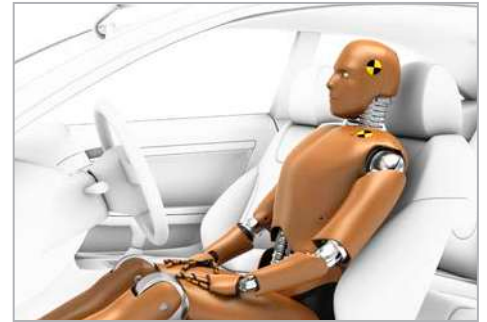
Rear Cargo Area

The Honda Pilot has one of the largest cargo capacities among SUV's of its size.



Additional Storage

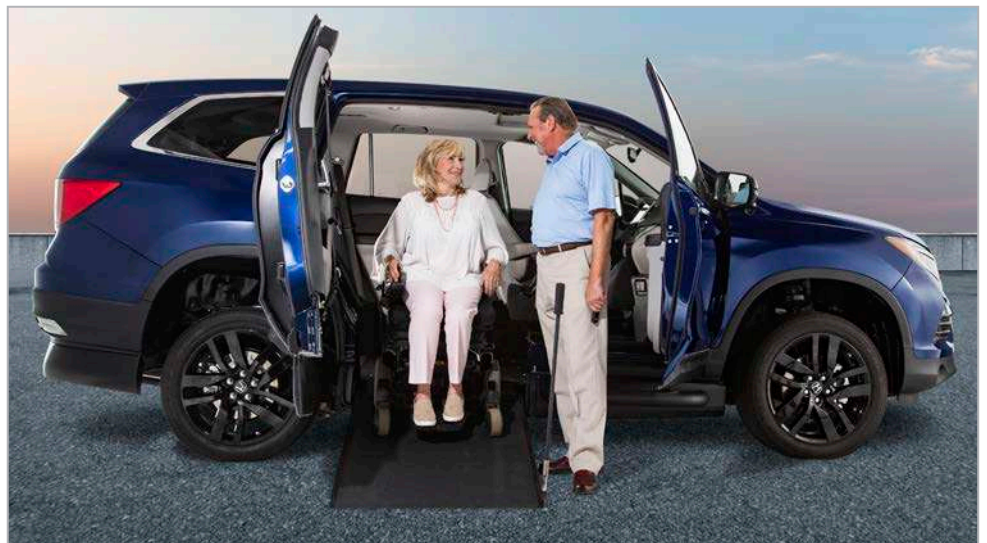
An extra cargo storage area is conveniently incorporated below the rear bench seat.



100% Crash Tested

Meets or exceeds all Federal Motor Vehicle Safety Standards governed by NHTSA

(National Highway Transportation Safety Administration).



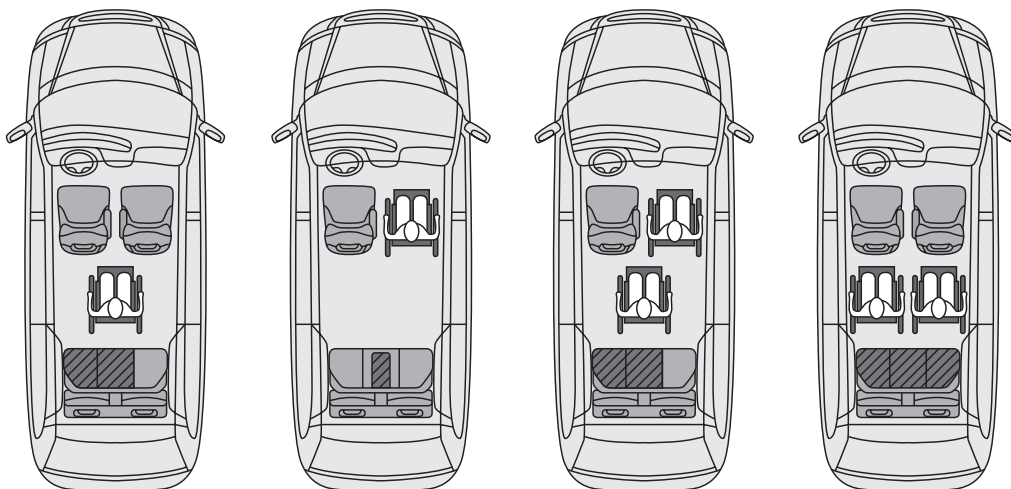
Wide 32" Ramp

VMI's Honda Pilot Northstar E has a wide, durable ramp to accommodate large power wheelchairs.



Seating Flexibility

Multiple seating options for VMI's Honda Pilot conversion allow for independence and flexibility. Wheelchair users can choose to sit in the front passenger position or ride in the middle of the vehicle. This diagram shows possible seating options.



Wheelchair users cannot drive from their wheelchair in the Northstar E conversion because the front driver seat is not removable. Seating options may vary based on available payload. Refer to your VMI owner's manual for payload information.

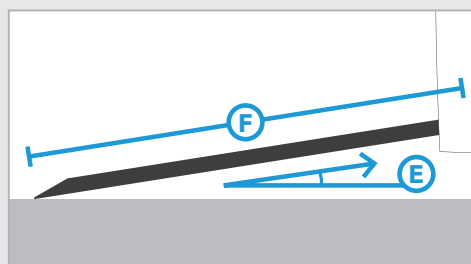
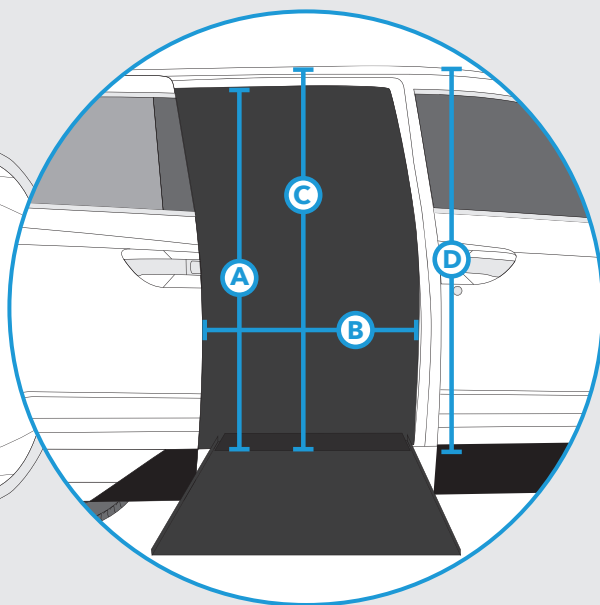
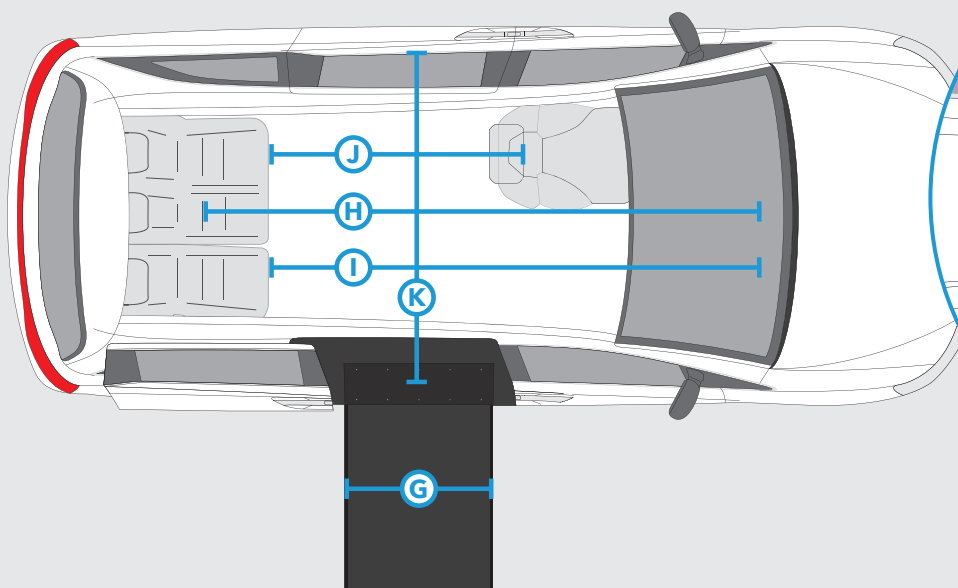
Durafloor

Optional Feature

- Unique rubberized flooring
- Provides excellent wheelchair traction
- Durable and easy to clean
- Additional layer of noise-reducing insulation



Specifications



	Northstar E
A Door Opening Height	55.5"
B Door Opening Width	33.5"
C Interior Height at Center Position	58"
D Interior Height at Front Position	59.5" (without sunroof)
E Ramp Angle	12°
F Ramp Length (angled ramp and transition plate)	57.75"
G Ramp Width (usable)	32"
Ramp Capacity	800 lbs
H Floor Length Overall	100"
I Floor Length to Rear Bench	85.5"
J Floor Length Behind Front Seats (from B Pillar)	59.5"
K Floor Width	65.75"
Ground Clearance (at exhaust)	4.75"
Overall Vehicle Height	76"

Specifications apply to 2017 VMI Honda Pilot with a Northstar E conversion. Measurements may vary based on vehicle trim levels and environmental factors. To ensure best vehicle fit, please visit with your local dealer to confirm vehicle measurements prior to purchase. All information is subject to change without notice. © 2018 Vantage Mobility International. All rights reserved.



Imagining Possibilities in Everything We Do

For more than 30 years, VMI has applied its innovation and expertise to build advanced mobility products that allow our customers to experience greater freedom and access to life. We are committed to you and understand how transportation can bring you greater freedom and independence. Our quality, state-of-the-art lineup of mobility products provides ease of use, maneuverability and flexibility. All of our vehicles have been 100% crash tested and include a 3 year / 36,000 mile (*whichever comes first*) conversion warranty.



Dealer Network

Our more than 500 dealers are trained to carefully evaluate each customer and his or her unique needs in order to recommend the right mobility product. It's all part of our commitment to provide superior customer service and the most fulfilling ownership experience.



MQAP Certified

Fully meets compliance requirement standards instituted by the National Mobility Equipment Dealers Association for manufacturer quality assurance.



Proud Member
Since 1990



Proud Sponsor
Since 1999



855-VMI-VANS • vmivans.com • 5202 S 28th Place Phoenix, AZ 85040
(864-8267)