



Front Elevation

## Plot 8

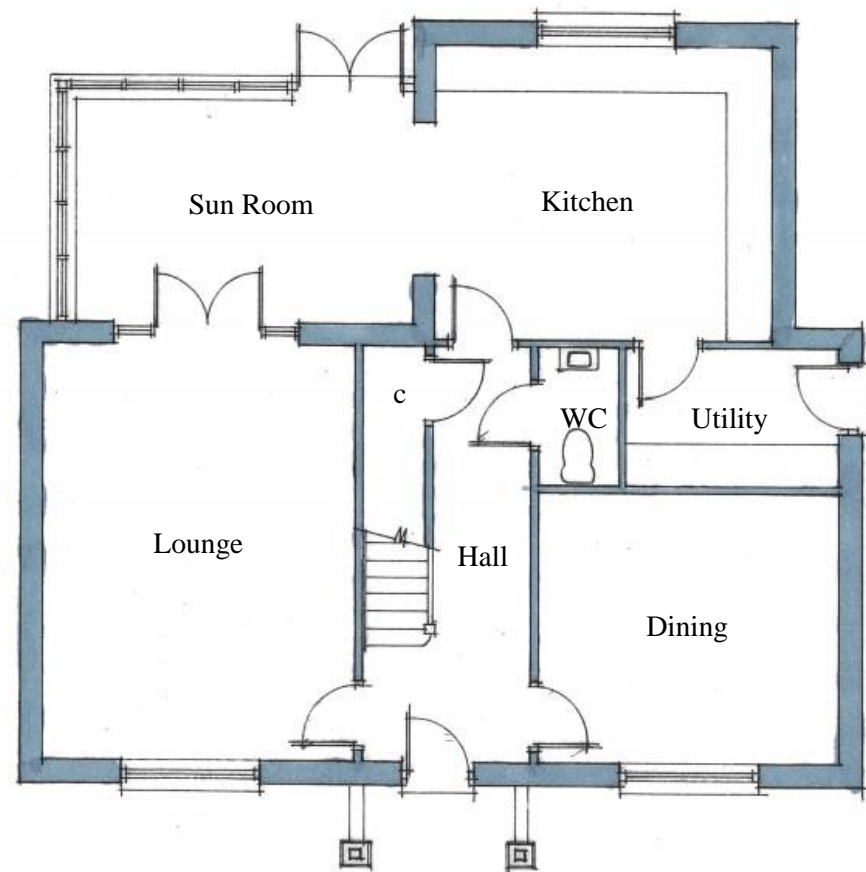
### Ground Floor

Dining –	3.85m x 3.4m (12'-8" x 11'-2")
Kitchen –	4.35m x 3.85m (14'-3" x 12'-7")
Lounge –	4.05m x 5.35m (13'-3" x 17'-6")
Sun Room –	4.3m x 2.85m (14'-1" x 9'-4")
Utility –	2.7m x 1.8m (8'-10" x 5'-11")
WC –	1.0m x 1.8m (3'-3" x 5'-11")

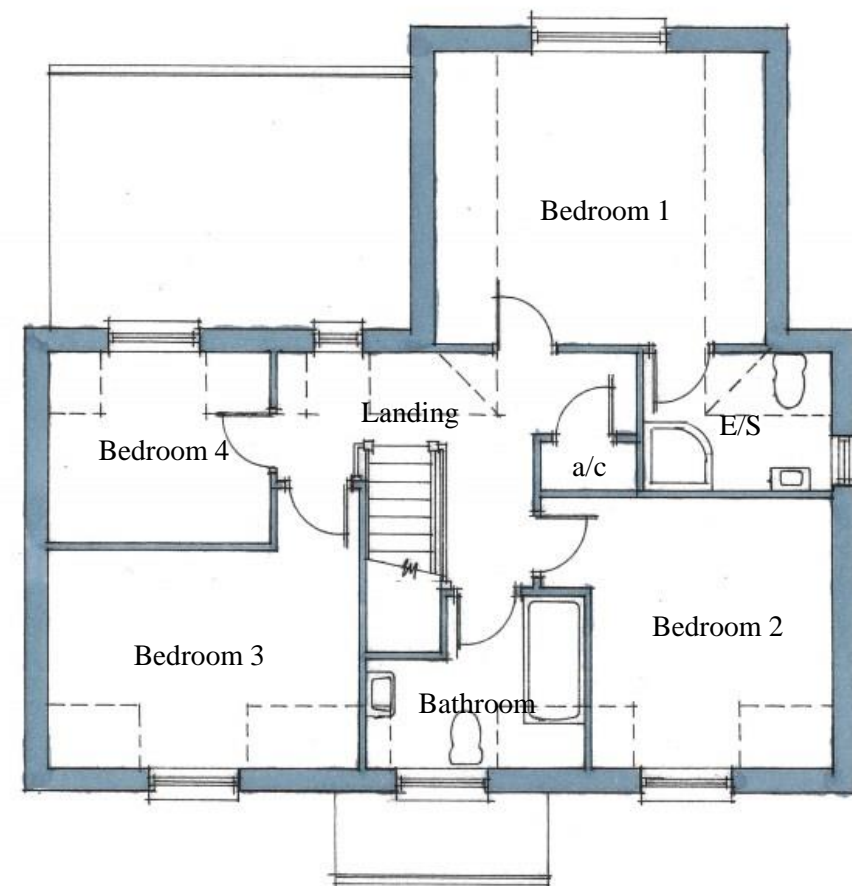
### First Floor

Bathroom –	2.85m x 2.2m (9'-4" x 7'-2")
Bedroom 1 –	4.35m x 3.85m (14'-3" x 12'-7")
Bedroom 2 –	3.15m x 3.4m (10'-4" x 11'-2")
Bedroom 3 –	4.05m x 2.75m (13'-3" x 9')
Bedroom 4 –	2.9m x 2.45m (9'-6" x 8')
En-suite –	2.45m x 1.8m (9'-6" x 5'-11")

**Total Area-** 160.3m<sup>2</sup> (1,725ft<sup>2</sup>)



Ground Floor Layout



First Floor Layout