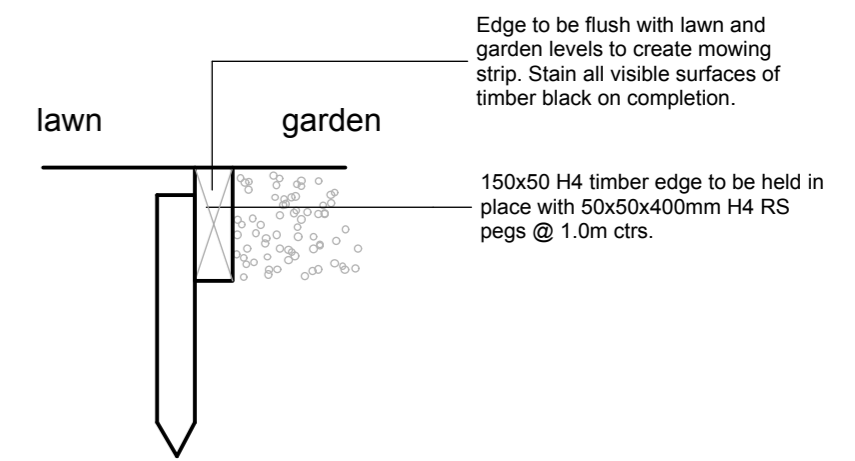
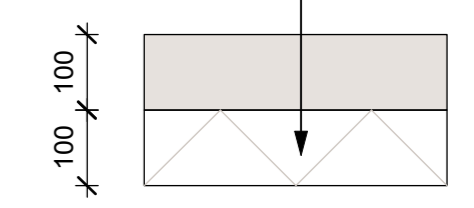


1 Timber lawn edge detail
1:10@A2



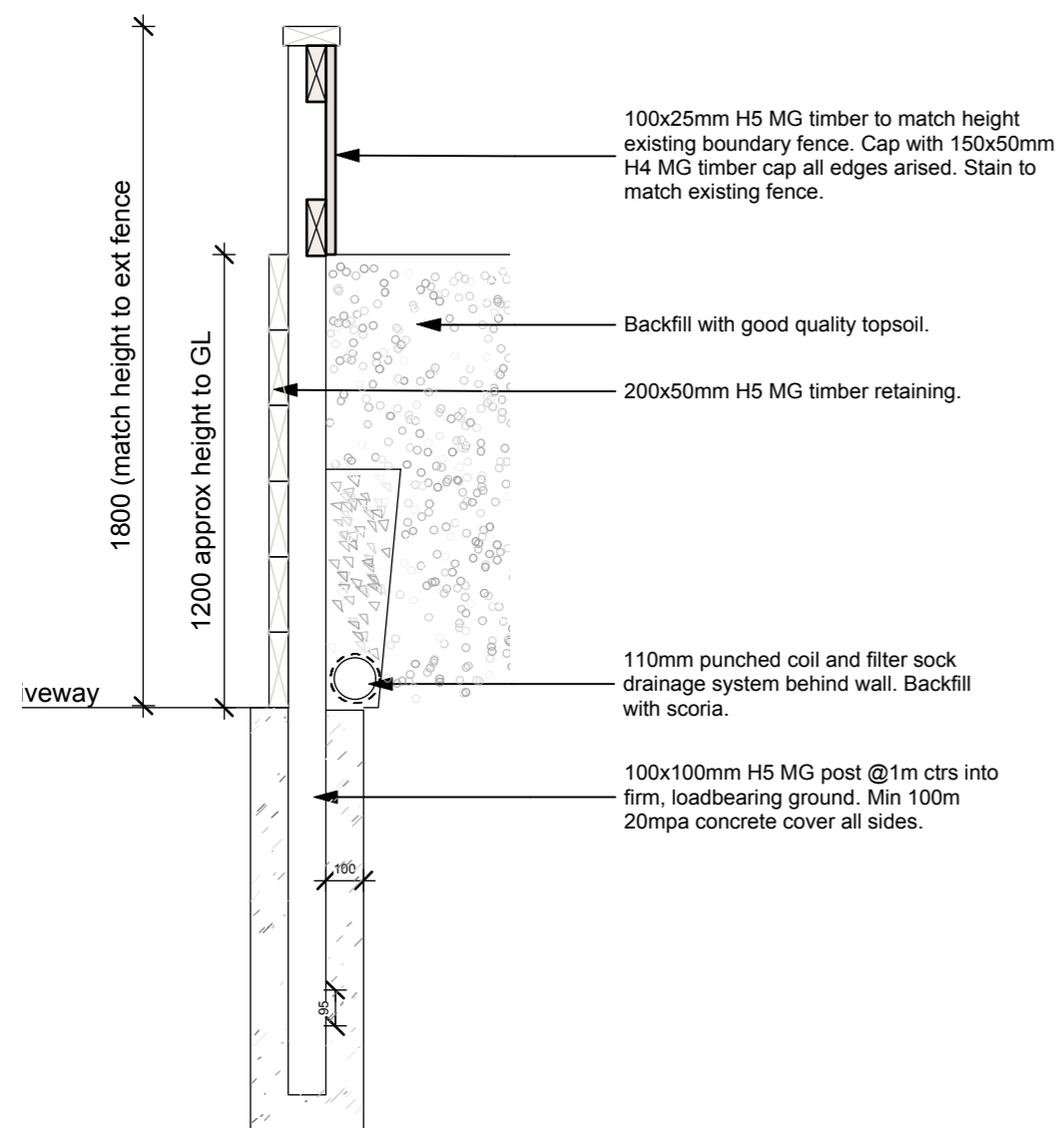
2 Concrete stepping stone
1:10@A2

100mm poured concrete stepping stones over 100mm compacted gap 20. Concrete to be made with 8kg black oxide per m3 and Hawkes bay pebble.



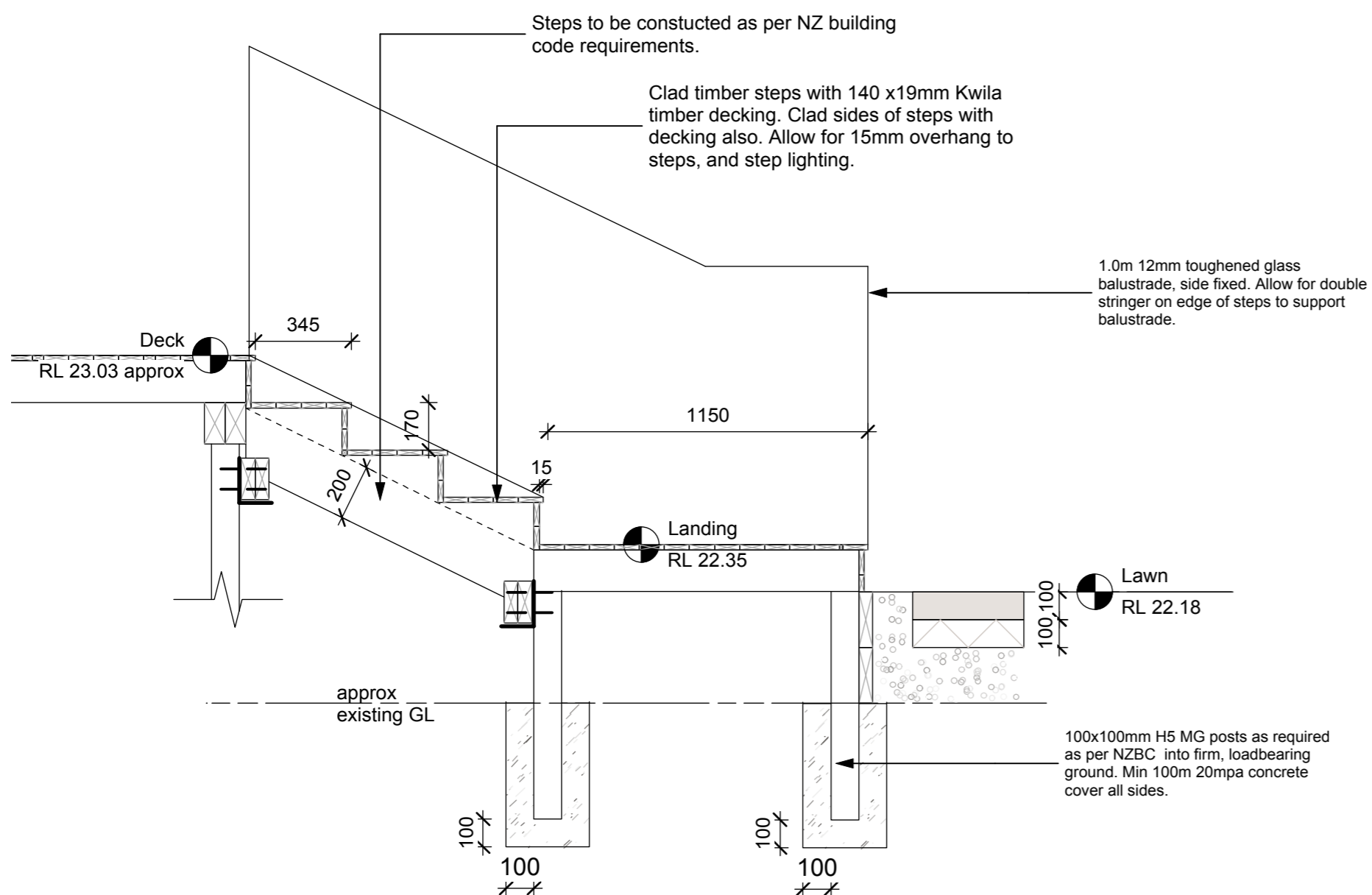
3 Timber retaining for Pohutukawa

Note: Use typical timber retaining detail to retain lawn also. Adjust heights as required.

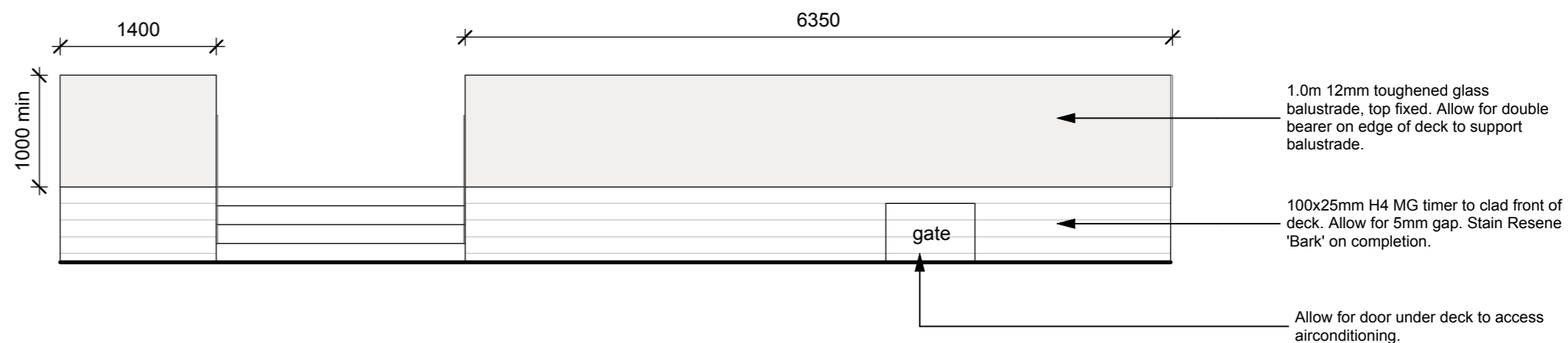


4 Timber steps from deck.

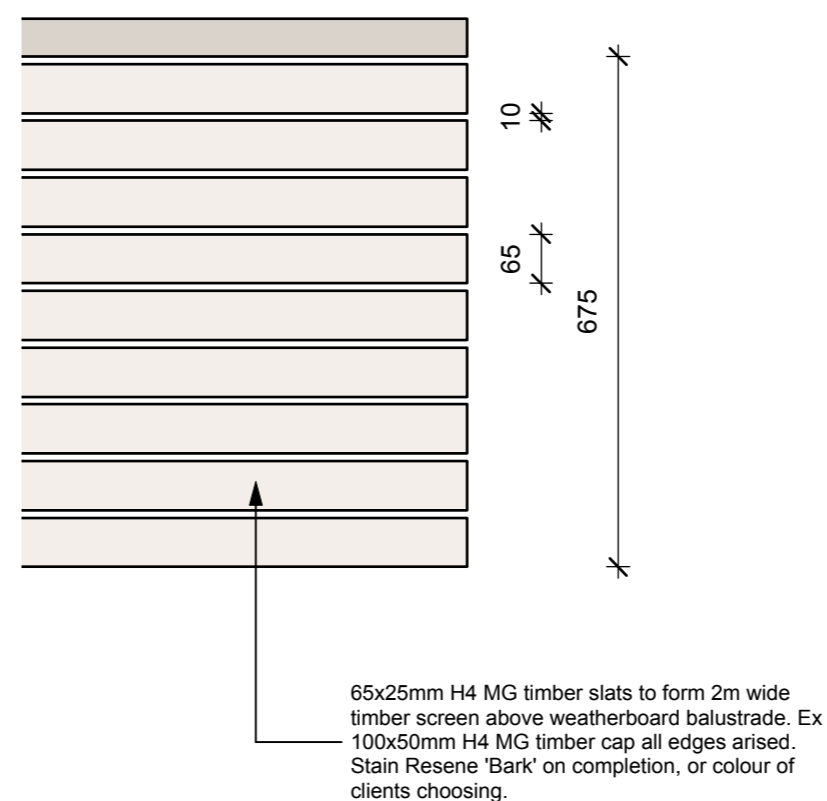
Note: Use typical timber step detail for steps to garage. Adjust heights and layouts as required.



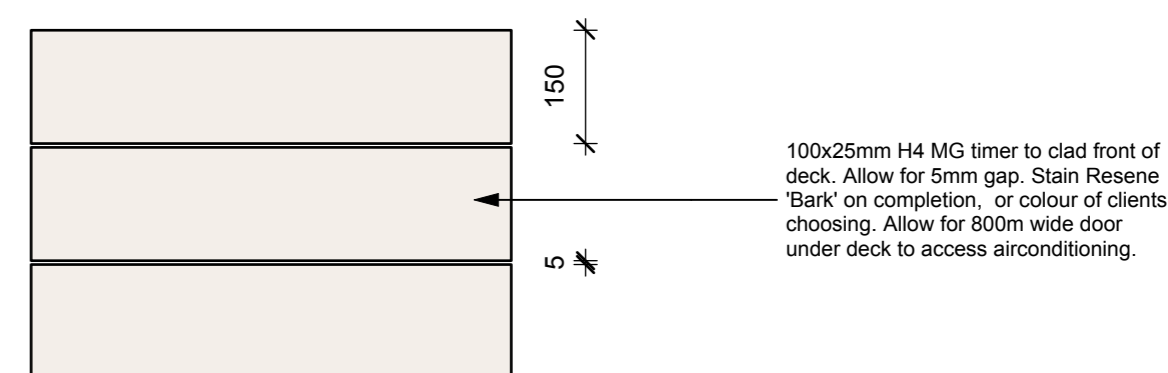
5 Elevation of glass balustrade



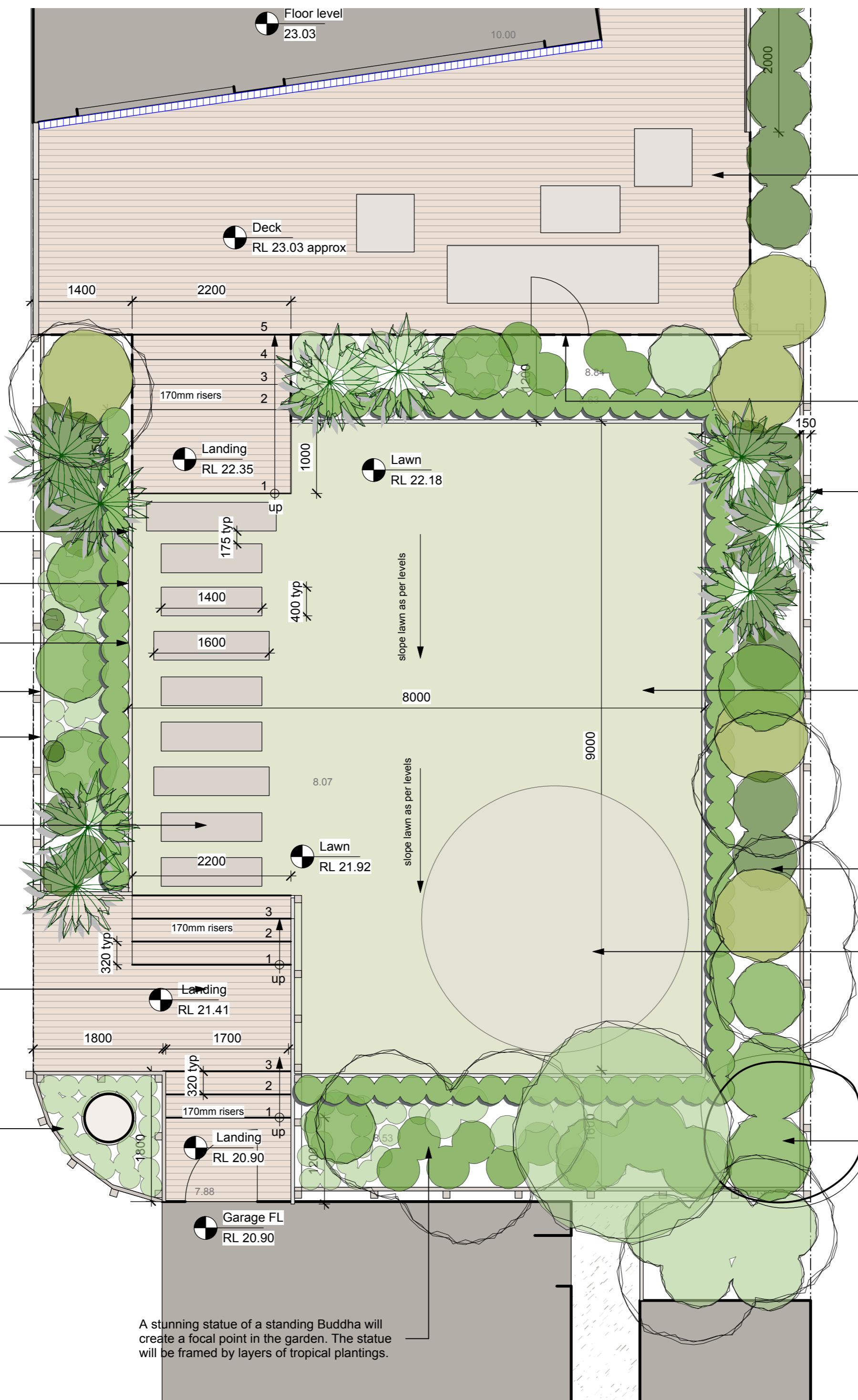
6 Elevation of timber slat screen



7 Elevation of timber cladding below deck



Balinese garden features



Lush layers of palms and tropical plantings will fill the garden where possible. Colour and textures will create interest and enjoyment.

Irrigation and lighting will be installed to get the maximum effect from your garden.

A hedge of Japanese box will create a neat edge to layers of tropical plants behind.

Climbers will be grown along stainless steel wire here.

A timber retaining wall in front of the boundary fence will retain the lawn and gardens at a higher level.

In situ coloured concrete stepping stones will lead from the garage deck to the house through the lawn.

Decking steps will lead down to the garage. A deck landing will create a spot for the swing.

The existing Pohutukawa will remain, with a large hardwood timber or block planter built around the base to allow it more room to grow. The planter will be planted with mondo grass.

A stunning statue of a standing Buddha will create a focal point in the garden. The statue will be framed by layers of tropical plantings.

The outdoor furniture can be comfortably arranged in the corner of the deck.

The new deck will come in line with the proposed extension of the house. The deck will have a glass balustrade to the edge.

A timber retaining wall will run along in front of the boundary fence to raise up the existing garden level.

The lawn will be squared off to create a large level playing area for the kids with Japanese box hedge to prevent damage to the tropical plants behind.

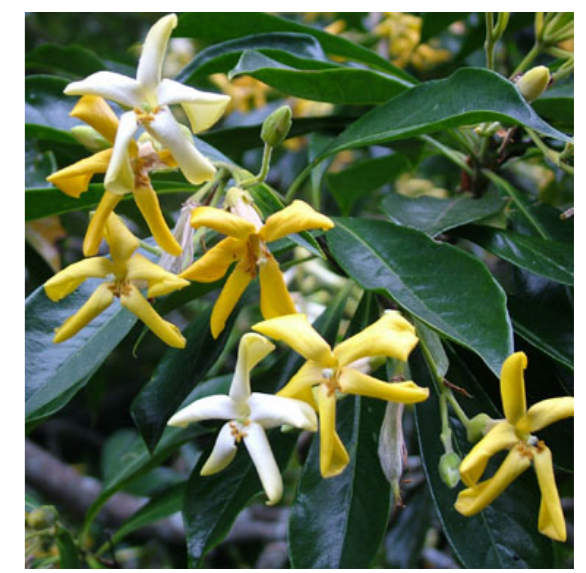
Tall palms will screen the neighbours, with layers of lush tropical plantings underneath.

The trampoline will be located in the corner of the garden here.

The existing Kohekohe will be kept.



King palm
Archontophoenix alexandrae



Australian frangipani
Hymenosporum flavum

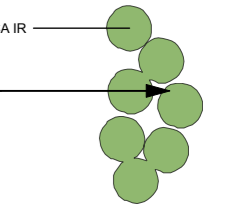


Alcanterea
Alcanterea 'Rubra'



Code	Quantity	Botanical Name	Common Name	Estimated Size	Remarks
AL MA	5	<i>Alocasia macrorrhiza</i>	Elephants ears	Pb8	Tropical plant with large green leaves.
AL NU	8	<i>Alpinia nutans</i>	False cardamon	Pb8	Tropical plant with deep green foliage.
AL RU	5	<i>Alcantarea 'rubra'</i>	Alcantarea	Pb12	Uniquely shaped plant with deep red leaves.
AR AL	8	<i>Archontophoenix alexandrae</i>	King palm	1.8m-2.2m	Elegant fast growing palm with deep green leaves.
BM GG	27	<i>Buxus microphylla 'Green Gem'</i>	Japanese Box	0.3m	Dense evergreen shrub with lime green foliage. Strong form.
CA IR	78	<i>Canna iridifolia</i>	Canna lily	Pb8	Tall Canna lily with deep pink flowers.
CH AT	6	<i>Chamaedorea atrovirens</i>	Cat palm	Pb28	Low growing plant with deep green leaves.
DY PA	9	<i>Dyopsis lutescens</i>	Dyopsis palms	2.5m	Stunning slow growing palm.
GA VI	26	<i>Gardenia 'Vietchi'</i>	Gardenia	Pb8	Tropical plant with fragrant white flowers.
HE CU	3	<i>Heliconia subulata</i>	Lobster claw	Pb18	Tropical plant with red hanging flowers.
HI RS	4	<i>Hibiscus rosa-sinensis</i>	Hibiscus	Pb8	Tropical plant with red flowers in summer.
JA MI	1	<i>Jacaranda mimosifolia</i>	Jacaranda	Pb95	Large tree with light purple flowers in spring.
LI RE	56	<i>Ligularia reniformis</i>	Ligularia	Pb8	Large leaved tropical plant with deep green leaves.
OP PL	25	<i>Ophiopogon planiscarpus</i>	Mondo grass	Pb2	Strappy leaved groundcover with deep green leaves.
ST FL	2	<i>Stephanotis floribunda</i>	Stephanotis	Vine	Tropical climber with scented white flowers.
ST NI	1	<i>Strelitzia nicholai</i>	Giant bird of paradise	Pb95	Tall large leaved tropical plant.
ZE CA	58	<i>Zepheranthes candida</i>	Autumn crocus	Pb2	Strappy leaved groundcover with white flowers.

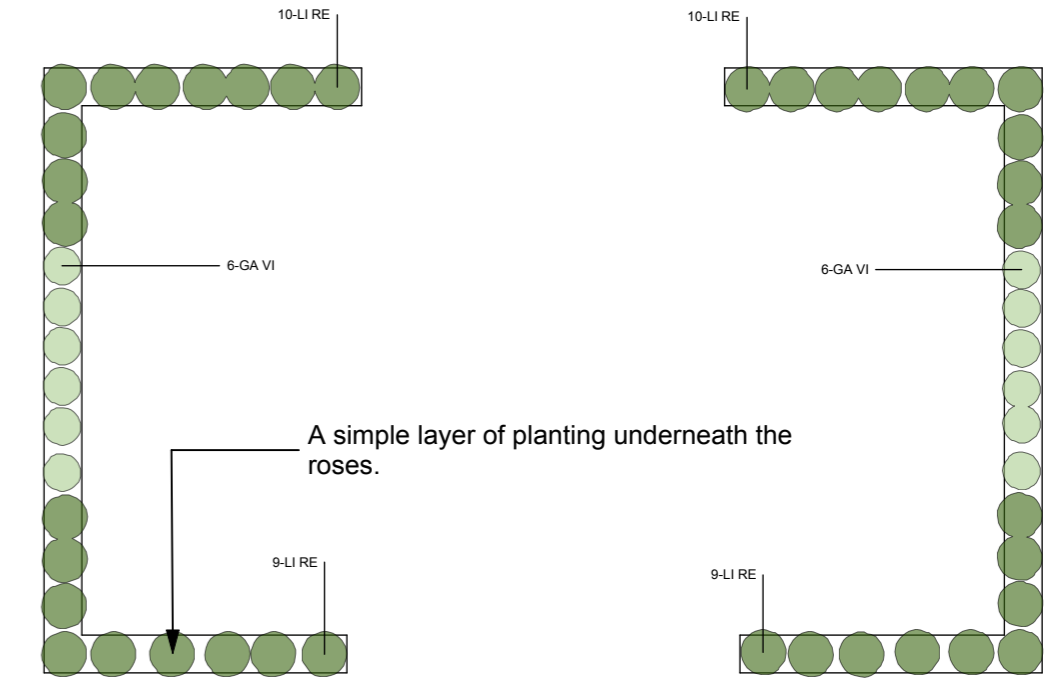
Remove a clump of *Agapanthus* from around the box on the side of the house on the neighbours driveway and replace with *Canna lillies* to screen the box.



Tractorseat plant
Ligularia reniformis



Gardenia
Gardenia vietchii



A simple layer of planting underneath the roses.



Canna lily
Canna iridifolia

Mondo grass
Ophiopogon planiscarpus

False Cardamon
Alpinia nutans

Jacaranda
Jacaranda mimosifolia



Giant bird of Paradise
Strelitzia nicholai



Cat palm
Chamaedorea atrovirens



Hibiscus
Hibiscus rosa sinensis



Autumn crocus
Zepheranthes candida



Dyopsis palm
Dyopsis lutescens

Elephants ears
Alocasia macrorrhiza



Stephanotis
Stephanotis floribunda