



CAMPION GARDENS
CARE HOME





CAMPION GARDENS CARE HOME

Here's what you could enjoy in the years ahead, if you choose to make your home at Campion gardens.

TO VIEW PLEASE CALL 01792 235 300



LIVING LONGER, LIVING HEALTHIER, LIVING HAPPIER

The older population is increasing and living longer. Giving thought to our well-being later in life can be a sensitive issue. Taking steps now can help to keep control over choices that may need to be made in the future.





“YOU DON’T
JUST LIVE HERE,
YOU FEEL A
SENSE OF
BELONGING”



AN EXCLUSIVE VILLAGE DEVELOPMENT...

The residential care home is a majestic yet homely mansion house, sitting comfortably alongside the owner occupied assisted living retirement apartments at Willow Court. All are set within a thriving village in a dream location, with seven acres of creative landscaping and as you enter the village you are greeted by impressive garden vistas.

Those who face illness can visit for short periods of respite and convalescence staying in our 5* Manor House Care Hotel, and for those who live here permanently our aim is to ensure residents live life to the full.

An enriched lifestyle awaits as the many Village amenities, full leisure programme and the chance to forge friendships affords you new and exciting opportunities.

...IN A LOVELY PART OF THE COUNTRY.

Swansea, with its industrial heritage, is now a major metropolitan centre but it retains its charm.

Campion Gardens is just 5 miles away, and less than 2 miles from the picturesque old fishing village of mumbles. It is literally at the gateway to the Gower peninsular, and first in the UK designated as an area of outstanding natural beauty. The quaint hamlets of Murton and Bishopston are on the doorstep. It is idyllic rural setting yet enjoying excellent transport links.



“WE TAKE
YOUR HEALTH
TO HEART”



HEALTH...

ASPIRATIONAL CARE PLANNING

A package of care is tailored to meet individual physical, psychological and social needs. Together we create, review and update your personal care and service plan.

The aspirations of our residents are all important whether they are physically less able or have some mental health issues, support interventions satisfy lower level needs through to end of life care.

We place great emphasis on maintaining independence wherever possible. Being over care for sometimes results in certain social, domestic or functional ability being reduce or even lost. It is a careful balance between help

and independence whilst considering the prospect for the encouraging further rehabilitation.

We aim to create a sense of community, continuity, belonging, purpose, achievement, significance in every one of our resident's lives. Focusing in levels of resident's satisfaction, comfort and contentment.

At all times respect is assured for the important values of privacy and dignity, ensuring rights of choice can be expressed and acknowledged.

...CARE AND SUPPORT

CARE AND THE LIVING EXPERIENCE

You may feel that Campion Gardens care needs will outweigh the capacity of individuals to enjoy many of facilities available. Whether involvement is active or passive, their very existence is stimulating and goes hand in glove with the serious work of residential care. Empathy and a recognition of personal limitations enables staff to help residents get the most from life.

SKILLS AND EXPERTISE

Carers are highly skilled. Ongoing training features prominently with a fully qualified trainer working as part of a team.

We believe in nurturing the talents of its staff. We are committed to helping them achieve their goals.

We were in fact the first in the UK to receive the prestigious Investors in People award (IIP) recognizing our commitment to developing employees to provide the best quality services.



STYLISH INTERIOR PERFECTION COMBINED WITH PRACTICAL LIVING

The detailing of each room will satisfy the discerning resident, as the interior specification is stylish yet homely. Living environment is more about ambiance than people often imagine.

Rooms are spacious, light and airy and can be personalised to your taste. Technology can enhance your living experience, as living aids can be added at any time.

En suite bathrooms are individually created to include attractive chrome finish taps and quality continental tiling. There is easy access shower and we install any other equipment that might be necessary. For ultimate protection we also have fitted anti-scalding safety devices.

The deluxe and premier rooms are impressive to say the least. Our classic rooms are traditional and of course luxurious. They should exceed all expectations.

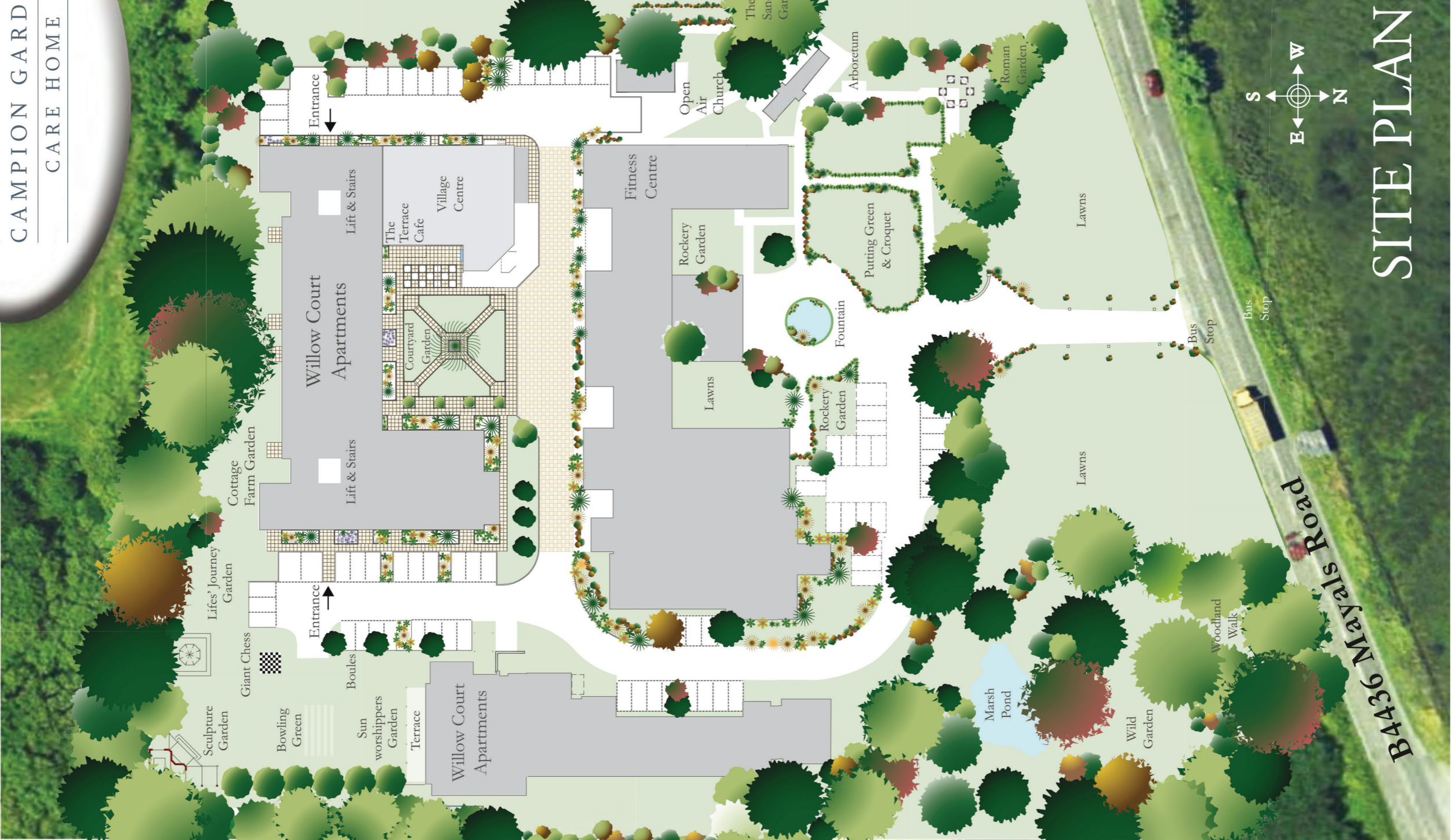
All rooms have smart TVs, WIFI connection and cabling ready for the sky TV, telephone points, and the capacity to introduce health care support technology including loop systems for the hard of hearing. The sophisticated telephones system permits complimentary automatic dialling for all hotel departments, such as room service and to friends in other rooms where the system has been installed.

ROOMS AVAILABLE

- Classic
- Premier
- Deluxe



CAMPION GARDENS
CARE HOME



SITE PLAN

Swansea City Centre



Swansea Bay Marina



Mumbles



Gower



Clyne Common



Mumbles



THE GREAT OUTDOORS

The grounds are in a class of their own. With over a mile of easily navigated walkways you can reach a succession of enchanting destinations on foot, in a wheelchair whether mechanical or electric, or mobility scooter. The formal courtyard with its centrepiece, topiary and bedding plants is a display of abundant colour.

Be a naturalist at life journey Garden, with its birdhouse, and a few furry friends.

There is a sanctuary garden for peace and reflection.

For worship and private prayer there is an open air chapel. Country folk can explore via the attractive woodland walk reaching the Marsh pond providing a delightfully tranquil setting.

In the sun worshippers Garden you can soak up the rays, or take your green fingers on to the cottage farm house garden with its vegetable patch and herbs.

For outdoor activity there is a putting green, croquet lawn, boule, bowling and giant chess. If you're not taking part seating for spectators is ample. The children's play area is for our little visitors.

A short walk to the far side of the village will bring you to the sculpture garden, an art display in itself. An interesting place to take a wander is the Roman garden which houses our very own forum pillars.

“FROM
PASTURE
TO
PARADISE”



...EXCITING THINGS TO COME

Aside from the array of aforementioned facilities - A newly refurbished lounge, a great place to chat with friends, watch TV or take part in our daily leisure programme. There will also be an additional dining room and coffee shop/bar, serving delicious and nutritious meals to meet your dietary requirements and preferences.

The lounge will lead on to the conservatory, a perfect place to read a book and look out into the two new garden rooms.

A new cinema room with comfortable recliner chairs for the boutique feel.

A hair & pamper salon to keep you looking your best especially for those special occasions.

The courtyard garden which will be home to some beautiful potted plants, hanging baskets, a herb garden and many ornamental features, keen gardeners may enjoy tending to the flowers on show.

19 newly refurbished bedrooms all with en-suite facilities and the latest technologies and the floor to ceiling windows.

ALSO WITHIN THE VILLAGE

A health and fitness centre

Why not take advantage of the state of the art age and ability appropriate fitness equipment and expert advice on how to lead a healthy lifestyle. Well-being practices such as mediation and mindfulness are also a feature of the extensive leisure programme, for holistic approach to fitness, health and wellbeing.

A CHILDREN'S NURSERY

We've all heard about the benefits of connecting the young with older adults, and we take full advantage of this strategy, proven to help reduce the likelihood of depression and isolation, or just enhance those family memories.

THE VILLAGE WITH A SENSE OF COMMUNITY

There's a true village feel with a sense of welcome and neighbourhood, not surprising when you consider the array of communal facilities providing the perfect environment to relax or meet friends and relatives.

Our highly professional team are available around the clock to respond to your wishes. Their discretion and respect for your privacy is assured.

So what's here altogether...

There's a beauty salon & hairdressers, where you can be pampered and spoiled, enjoying a new hairdo, or manicure. Masons is the traditional corner shop with all you'd expect including a postal service.

Memoirs is a coffee lounge and cocktail bar. It boasts an extensive menu and an exciting alcohol list. Here you will discover a wide range of teas and coffees along with bakery and patisserie products to delight. According to James Bond, "afternoon tea is Britain's one indisputable contribution to Western civilization". The terrace is an informal garden café.

The private guest dining room is also available to celebrate special occasions or to entertain friends and family.

Movies are screened and entertainment productions take place on the Equinox stage and range from the amateur to the professional.

At the library you can catch up on the latest new from complimentary newspapers and magazines, borrow a book, or do some internet surfing. If you're new to computers, don't worry, we are committed to life long learning at Campion gardens, and we have arranged a number of courses, interesting talk and open discussion groups to keep minds active!

The village also has its very own bus service and chauffeur/escort service. Trips and excursions to attractions far and near feature regularly.

There is a comprehensive programme of events daily activities to suit all, from organised clubs and societies, fayres and celebrations to the less formal daily activities such as:

Arts & crafts sessions, Exercise classes, Pamper sessions, Chats & reminiscence, Movie nights... to name just a few!

For those with spiritual needs there are church services run by visiting clergy. At the village we try to support religious diversity.



CAMPION GARDENS RETIREMENT VILLAGE IS A FAMILY BUSINESS WITH OVER 30 YEARS EXPERIENCE AT THE FOREFRONT IN ITS FIELD. THIS LEADERSHIP COMBINED WITH THE LOYALTY OF A TRULY WELL NURTURED TEAM IS WHAT HELPS MAKE THE FUTURE SO POSITIVE AND REFRESHING.

MEANINGFUL LIFESTYLE CHOICES

Life can be as you wish at Campion Gardens, getting up at whatever time you choose and with whatever assistance you may need. You can buy breakfast via room service or be waited on at the restaurant. You can buy the morning newspaper in person from the shop or have it delivered.

During the morning, take tea or coffee with friends, and, weather permitting, walk the gardens. Enjoy a snack at lunch at the café or the full works in the restaurant “Now that’s a lifestyle”. The regular daily lunch or dinner is on offer at the residents dining rooms or through room service.

All this comes with whatever assistance is needed to help you lead as fulfilling a life as possible.

“THE LIFESTYLE YOU DESIRE IS THE
LIFESTYLE YOU DESERVE”

AFFORDABLE & VALUE FOR MONEY

Our costs and charges are scaled to fit in with your personal financial circumstances making life at Campion Gardens truly affordable for everyone.

Residents may be eligible for funding by social services department. Others may pay privately selecting what ever package is more suitable.

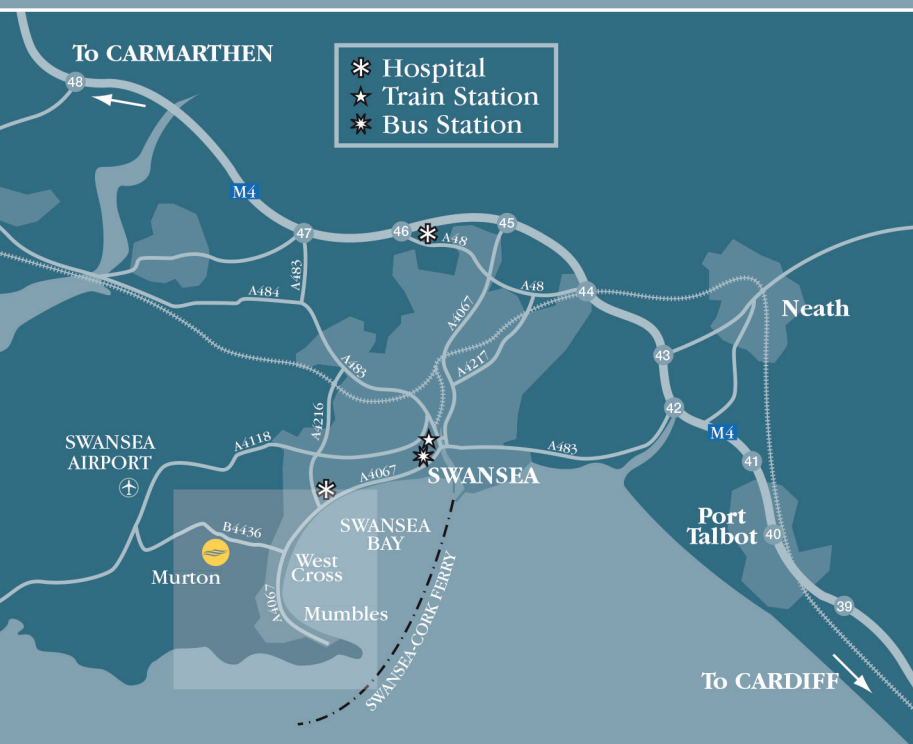
For security with opportunity residents at Campion Gardens can enjoy valuable piece of mind.

TO SUM UP

WE HOPE WHAT YOU HAVE READ DEMONSTRATES HOW LIFE AT CAMPION GARDENS CAN BE HAPPY AND FULFILLING, MEETING ALL YOUR WANTS AND DESIRES.

THIS PIONEERING APPROACH TO RETIREMENT LIVING OFFERS A WINNING COMBINATION OF A HIGHLY DESIRABLE LOCATION, AND LUXURIOUS CARE HOME FACILITIES FOR RESIDENTIAL NEEDS.

CONTACT US TODAY TO ARRANGE A VISIT, AND START POSITIVELY PLANNING FOR YOUR FUTURE.



For more information please contact:

Campion Gardens Care Home
Clyne Common, Swansea, SA3 3JB

Admissions Enquiry Line: 01792 235 300
Residential Home: 01792 235 340

or email admin@willowcourt.co.uk

