



# Laboratory Engineering







# **We provide solutions.** Taking care of the **Planning, Design, Building, Installation and Maintenance.**

Laboratory Engineering at it's Finest

## **Contents**

<b>Welcome</b>	<b>4</b>
<b>Why Choose Hoare?</b>	<b>5</b>
<b>The Company</b>	<b>6/7</b>
<b>Our History</b>	<b>8</b>
<b>Services</b>	
<b>Laboratory Installations - Contracting</b>	<b>9</b>
<b>Technical Services - Laboratory Safety</b>	<b>10</b>
<b>COSHH Testing, Maintenance &amp; Repairs - Mail Order</b>	<b>11</b>
<b>Products</b>	
<b>Laboratory Furniture</b>	<b>12/13</b>
<b>Fume Cupboards, Extract Hoods &amp; Cabinets</b>	<b>14/15</b>
<b>Fume Extraction, Supply Air &amp; Ventilation</b>	<b>16/17</b>
<b>Mechanical Pipework</b>	<b>18</b>
<b>Electrical Wiring</b>	<b>19</b>
<b>Building Works &amp; Alterations</b>	<b>20</b>
<b>Laboratory Safety Products</b>	<b>21</b>
<b>Laboratory Chairs &amp; Stools</b>	<b>22</b>
<b>Contact us - Map</b>	<b>23</b>

# We are a **long established family firm** and have a **great deal of experience** in the **laboratory industry.**

## Welcome

to **Hoare Laboratory Engineering Ltd.**

We are a long established family firm and have a great deal of experience in the laboratory industry. We provide a full range of laboratory products and services, including laboratory design, supply and installation of laboratory furniture, fume cupboards, fume extraction systems, mechanical pipework, electrical wiring, minor building works/alterations and maintenance & testing services.

We offer a comprehensive, cost-effective and professional range to cater for all aspects of fitting out, remodelling and refurbishment of laboratories in the Industrial, Educational and Healthcare sectors throughout Britain.

Whether you require professional advice on laboratory design, a complete turnkey multidiscipline installation, maintenance of an existing installation, or a spare part, Hoare Laboratory Engineering can provide the solution.

For additional information please take a look at our website [www.hoare.co.uk](http://www.hoare.co.uk) or contact us.



# Why Choose Hoare?



- We are an ISO 9001 registered company.
- We use a wide range of European manufacturers and always offer the best solution for your needs.
- Our laboratory installations and any products we supply comply with current legislation, recommendations, regulations, Codes of Practice and Standards.
- Our extensive experience of laboratory installations means that we can advise on what works best for a particular situation. We can help you avoid the pitfalls that can arise and that others may not have encountered.
- Against a similar specification we are confident that our prices are highly competitive. If we can see a way of achieving a similar but better result we will offer an alternative specification - this may mean that our price is slightly higher than competitors but likewise our specifications will be too.
- We take pride in providing our customers with a laboratory design and installation that delivers what they need and continues to do so. We pay close attention to your needs, provide dedicated supervision of your project and an after-sales service that is second to none, which only a longstanding family firm such as Hoare Laboratory Engineering can provide.



# The Company



## Traditional Values, Modern Outlook

We are a long term solution. Established in 1928 we are very much a family business with the third generation of the Hoare family now heading the company. We still believe in the traditional values of good customer service, a personal, friendly and flexible approach, and honesty and integrity in all our dealings. We also believe in providing a totally professional and business like approach in all that we do. We want customers to feel good about their experience of working with Hoare and for them to want to come back for more !

## Providing the Right Solution

“Providing the right solution” - what does that mean? It means that what we will do is provide you with a solution that meets your requirements not ours. What we won't do is try to sell you something just because it's what we manufacture or what we currently have in stock or what a supplier agreement limits us to sell to you. If we can't match your requirements exactly we will tell you so and if we can't match your requirements at all we will tell you this as well. We won't jeopardise a long term relationship for a short term sale.

## Ethical Approach

We also believe in openness and transparency. We will provide full, detailed and accurate information in the form of itemised Scopes of Work, Bills of Quantities, AutoCAD drawings, delivery periods and lead times, installation programmes, and details of works we have excluded or have assumed are by others. We won't try to mislead or 'hide' things to gain a false advantage. We will even highlight any areas that are vital to the success of a project even if it's of no commercial value to us. Laboratory fit-outs can be a complex business and the right time to discover any errors, omissions or anomalies is at the design and planning stage - not when the goods are delivered to site.

## Realising Expectations

We welcome the opportunity to assist customers, architects, consultants, project managers etc develop schemes to ensure customers realise their expectation and get a laboratory that will give them the best prospect of achieving the success they strive for. After all, laboratories are a major expense so it pays to get it right. It pays to come to Hoare.

**At Hoare Laboratory  
Engineering we  
believe in providing  
the right solution  
backed up by  
cost-effective  
pricing and a high  
level of customer  
service.**

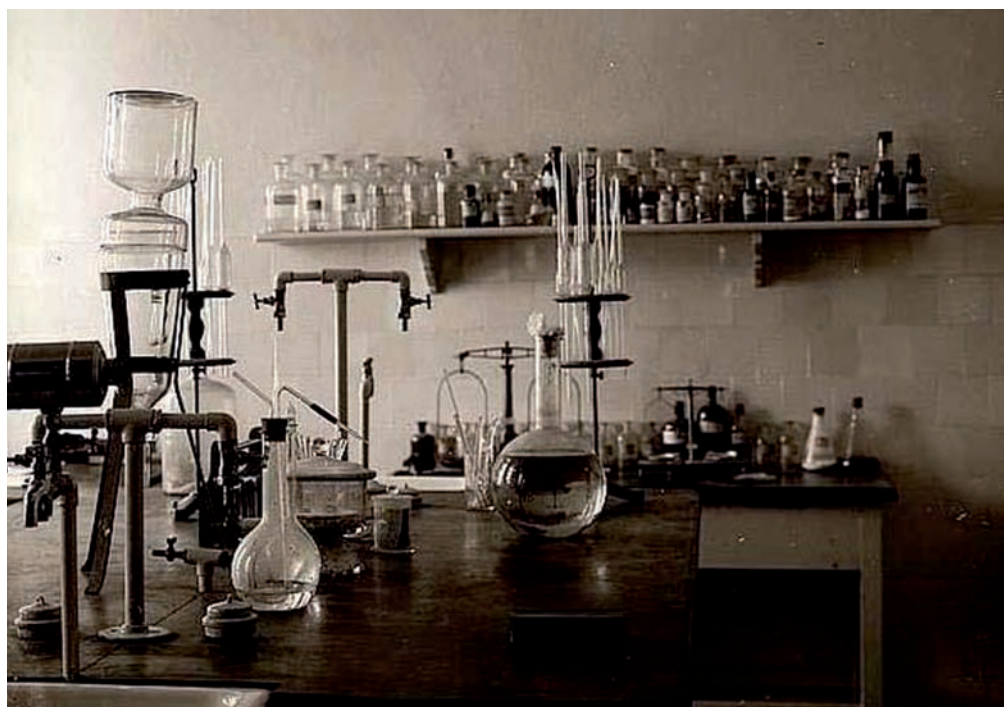


# Our History

The company has been synonymous with quality laboratory installations for many years, A. R. Hoare & Co. originally being founded by the late Alfred Robert Hoare in 1928, operated from Dulwich in South East London. Since that time it has evolved and developed through three generations of the Hoare family into one of the market leaders in the UK.

In the mid eighties the company ceased production of its own furniture and since then has teamed up with Europe's leading laboratory furniture and fume cupboard suppliers, enabling it to offer even greater product flexibility and competitive pricing. It also took the opportunity to relocate premises to Kent, and changed its name to Hoare Laboratory Engineering Ltd.

And that is where the company is today, run by Alfred's grandsons who continue to develop and improve the company their grandfather started all those years ago!



synonymous with  
quality laboratory  
installations for over  
80 years.



# Laboratory Installations



Our Installations Division is responsible for general laboratory installation projects where liaison is direct with the customer.

Working with customers, we can provide the full spectrum of products and our team is conversant with all aspects of Health & Safety documentation, estimate and budget scheduling, AutoCAD drawings, Operating & Maintenance Manuals etc.

# Contracting



Our Contracting Division is skilled in dealing with turnkey projects, multidiscipline projects, or projects involving liaison via a third party.

We are used to dealing with Main Contractors, specialist subcontractors, project management companies etc.

Our team of experts can provide the full spectrum of products and are conversant with all aspects of health & safety documentation, bills of quantities, estimate and budget scheduling, AutoCAD drawings, Operating & Maintenance manuals, self-billing/applications for payments etc.

# Technical Services

Our Technical Services Division deals with all aspects of laboratory design, consultancy and project management including:

Preparation of laboratory design schemes in connection with specified layouts

Consultancy on laboratory furniture, fume cupboards and associated installations

Project Management including management of customer specified suppliers/subcontractors

Implementation of testing and maintenance regimes

Quality and safety management



# Laboratory Safety

Our Safety Division is staffed by personnel who have specific knowledge and training in COSHH and CDM regulations, BSI/EN recommendations, the Health & Safety at Work Act and other relevant standards.

We can offer advice about all aspects of laboratory safety and help to select products to ensure a safe environment in which to work.



Business  
Information



CONSTRUCTION SKILLS  
CERTIFICATION SCHEME



# COSHH Testing, Maintenance & Repairs

Whether your installation requires a regular service in accordance with COSHH Regulations or a one-off repair our Maintenance & Repairs Division can help.

We offer a testing and maintenance service for fume cupboards and LEV systems in accordance with the relevant legislative requirements and should any equipment fail the test procedure we can advise on the necessary remedial actions required and offer to carry out repairs if applicable.

We offer two service options meeting the minimum legal requirements of COSHH: Test Only or Test and Inspect.

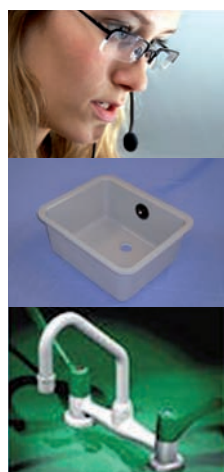
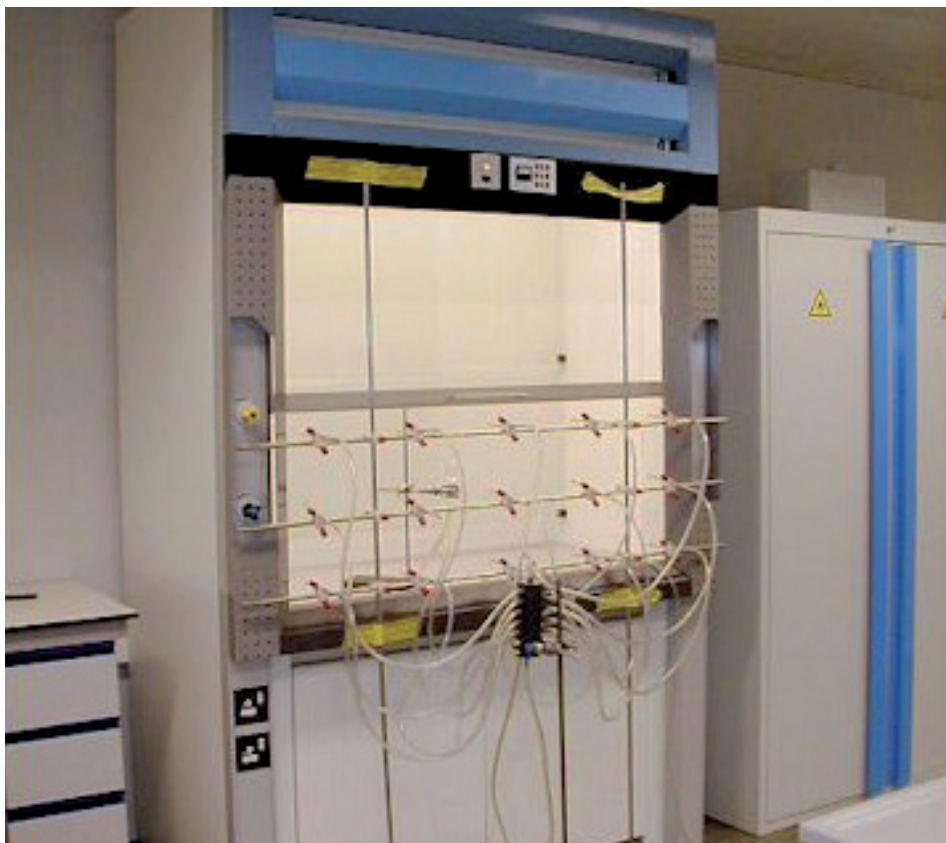
Our Fume Cupboard & Fume Extract System Inspection & Testing Service Specification is available to download from our website or is available on request.

Our maintenance service is more comprehensive than the Test & Inspection Service referred to above:

Our Fume Cupboard Maintenance Check List details the required 6 and 12 monthly maintenance and is available to download from our website or is available on request.

We can also deal with virtually any problem or emergency you are likely

to encounter. With a stock of spares (fan/AHU belts, fume cupboard components, filters etc) and the ability to acquire those 'once in a lifetime' parts that can let you down at a crucial time make us your first call for fast expert support.



## Mail Order

In addition to laboratory furniture systems, fume cupboards, fume extraction systems etc we can supply products that do not require specialist installation.

These include freestanding tables, laboratory chairs and stools, trolleys, storage units, specific types of fume cupboards and extraction devices, some safety products, taps, sinks, tanks, electrical products etc.



# Laboratory Furniture

We are specialists when it comes to the supply and installation of quality laboratory furniture.

We offer a range of standard laboratory furniture systems which, although modular, can cater for any bench length and are available in either standing or sitting height. Systems can be used independently or in combination. We can also offer a full range of underbench units along with matching wall, tall and special storage. Our laboratory furniture complies with BS 3202 and BS EN 14056.

However, where your individual requirement can not be met from the standard product range we are pleased to discuss a special solution and develop a purpose made product to meet those needs.

Worktops are the most vulnerable components of laboratory furniture so choosing the appropriate laboratory worktop is vital. We provide a wide range of choices to suit many different applications, environments and budgets.

The information below provides a summary of the range of laboratory furniture items we can supply. If what you require is not listed please contact us.

Pedestal, 'H'/Table Frame, Cantilever Frame and Mobile Bench Systems  
Underbench Units  
Tall Storage Units  
Wall Storage Units  
Accessories  
Worktops  
Sinks/Wash Hand Basins  
Mechanical Service Outlets  
Electrical Service Outlets  
Weighing Benches/Balance Tables  
Ancillary/Specialist Items  
PVC Fabrications







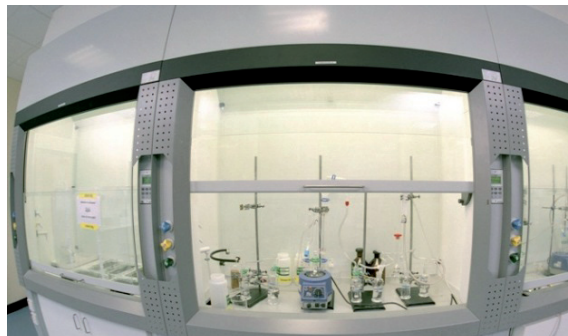
# Fume Cupboards, Extract Hoods & Cabinets

We can supply fume cupboards, fume hoods and extract/safety cabinets all of the highest technical specification and quality.

Specifying the right fume cupboard or fume extraction equipment appropriate to the users' needs is essential to safety in the workplace, protection of the environment and meeting health & safety regulations.

The list below gives an indication of the type of equipment we can supply. Please contact us for more detailed information and advice, or register and visit our Downloads section on our website.

- Fume Cupboards for industrial or educational use in compliance with BS EN 14175, BB88 and BS 7989
- Freestanding, bench mounted or mobile fume cupboards
- General purpose/standard, low level and walk-in fume cupboards
- Special purpose and recirculating fume cupboards
- Constant and variable volume fume cupboards
- Fume Extract Hoods and Canopies; bench or overbench mounted
- local exhaust ventilation systems
- Equipment extract systems
- Extract/Safety Cabinets including microbiological and laminar flow

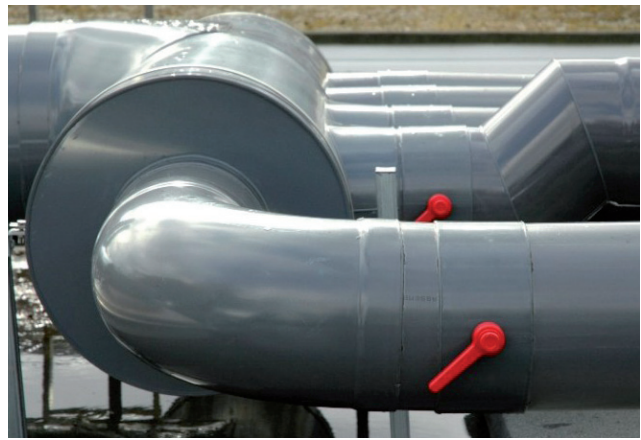
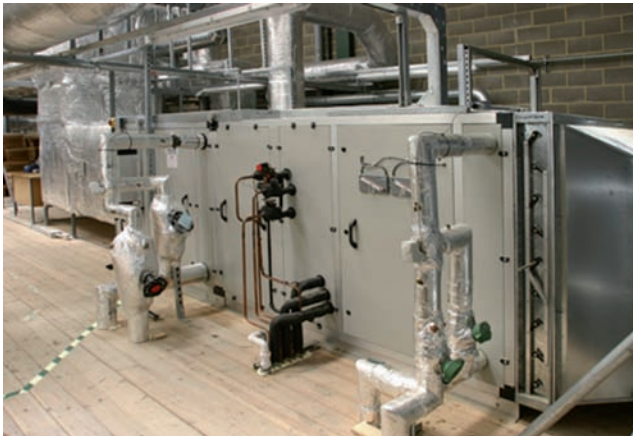






# Fume Extraction, Supply Air & Ventilation

Fume Extract  
Air Make-Up  
Full Air Conditioning  
Comfort Cooling  
General Extract  
General Ventilation









# Mechanical Pipework

Plumbing including water storage heaters, Gas Lines, Special Gases, Bottled Gas Lines, High Purity Gas Lines  
Waste Drainage Systems  
Equipment including bottle stores, manifolds and filtration





# Electrical Wiring



General power  
Earth/cross bonding  
Control wiring and equipment  
Data & Communications  
Lighting





# Building Works & Alterations

- Floors and mezzanine flooring
- Floor Coverings
- Walls and partitions
- Decorations and wall coverings
- Ceilings
- General including plant bases and platforms





# Laboratory Safety Products

Safety Storage including flammable liquid, acid/alkali and bottled gas cylinder  
Safety Handling Equipment



# Laboratory Chairs & Stools

We believe we offer one of the most comprehensive ranges of laboratory seating in the UK with laboratory chairs, stools and footrests produced by ISO 9001 accredited manufacturers to high quality specifications.

Available in a variety of designs and materials, we offer multi and specialist application ranges, including ESD static-safe and sterile/cleanroom products, designed to ensure that both the ergonomic requirements of the user and the demanding technical requirements of the laboratory are met.

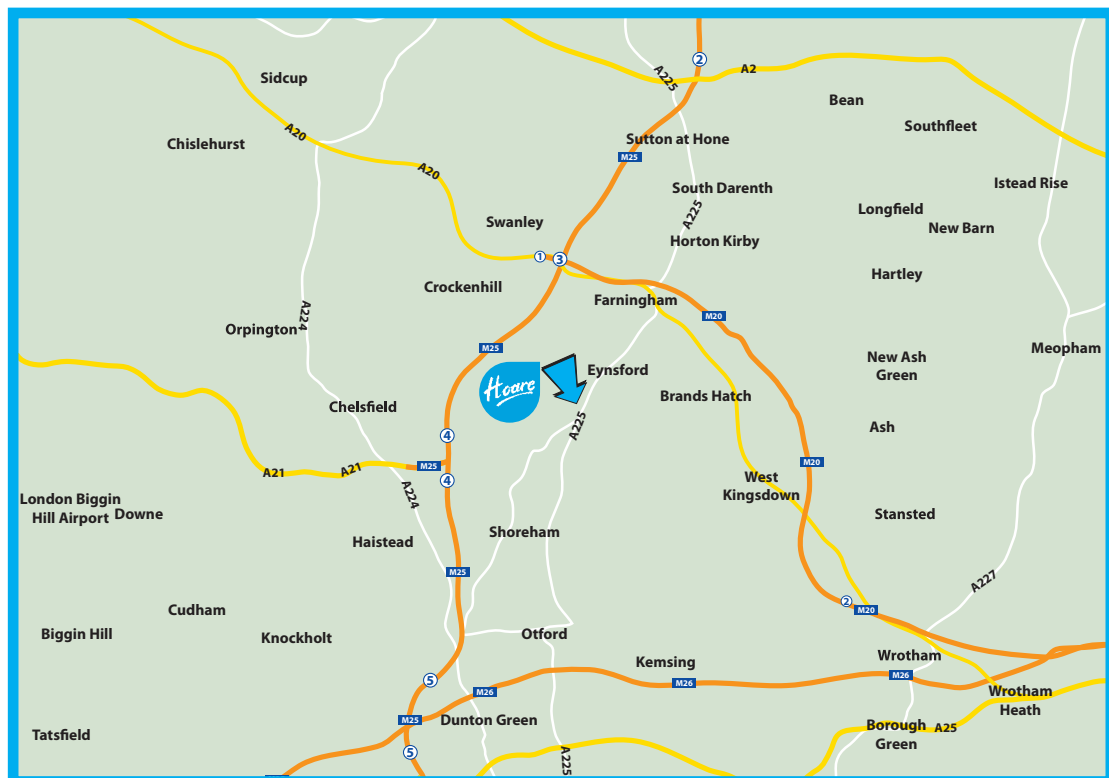
Please contact us to discuss your requirements.



# Making contact is easy.

Speak to us directly or  
visit our website for  
further details  
[www.hoare.co.uk](http://www.hoare.co.uk)

- We are situated in the Kent countryside, yet within minutes of the M25 and M20.
- Whether by telephone or in person, at your location or ours, our experts are always willing to help you by discussing your needs.



Unit 3,  
Lullingstone Park Farm Offices  
Eynsford  
Kent DA4 0JA

Tel: **01322 866110**  
Fax: 01322 863583  
Email: [office@hoare.co.uk](mailto:office@hoare.co.uk)  
Web: [www.hoare.co.uk](http://www.hoare.co.uk)



