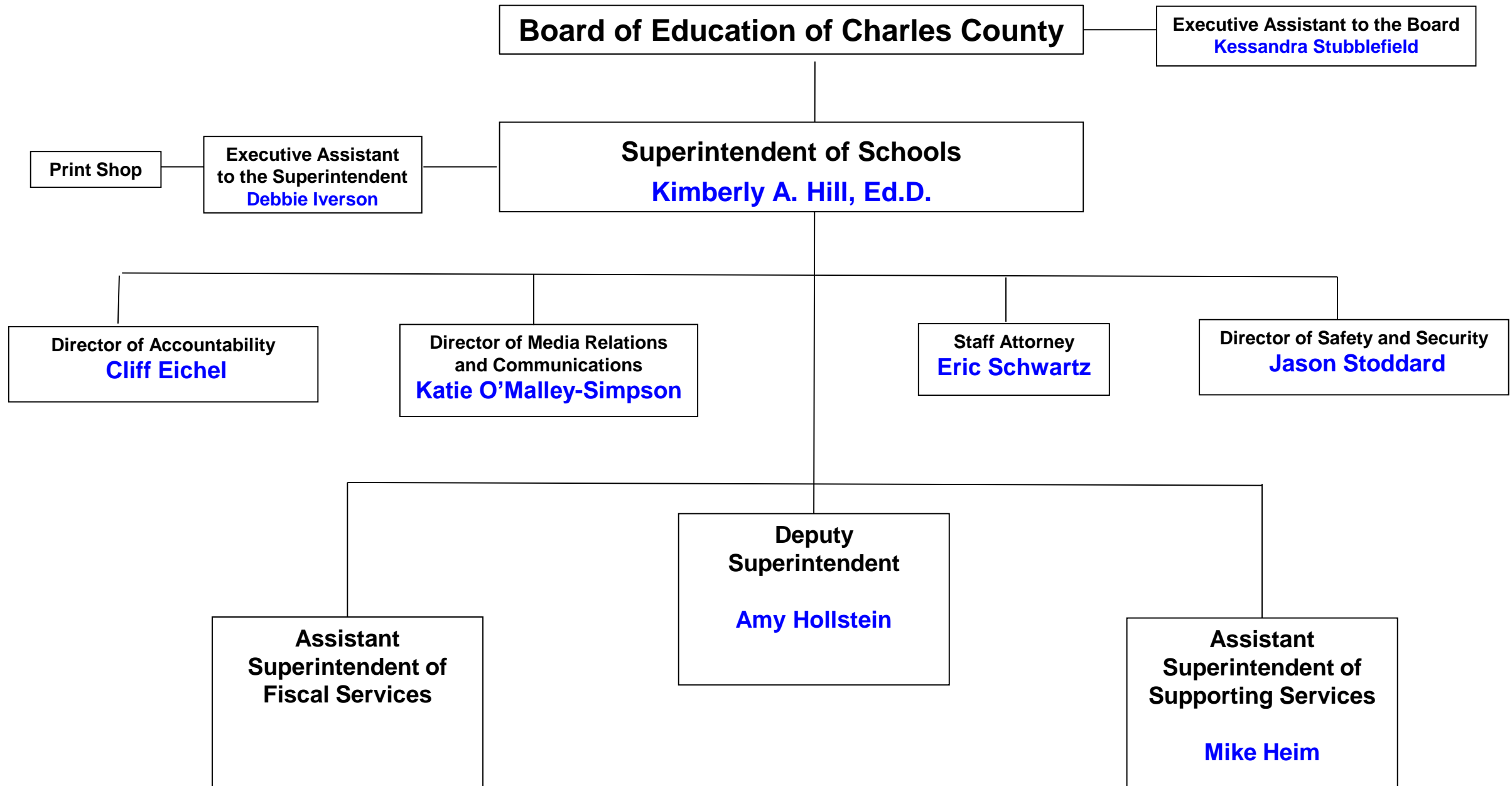
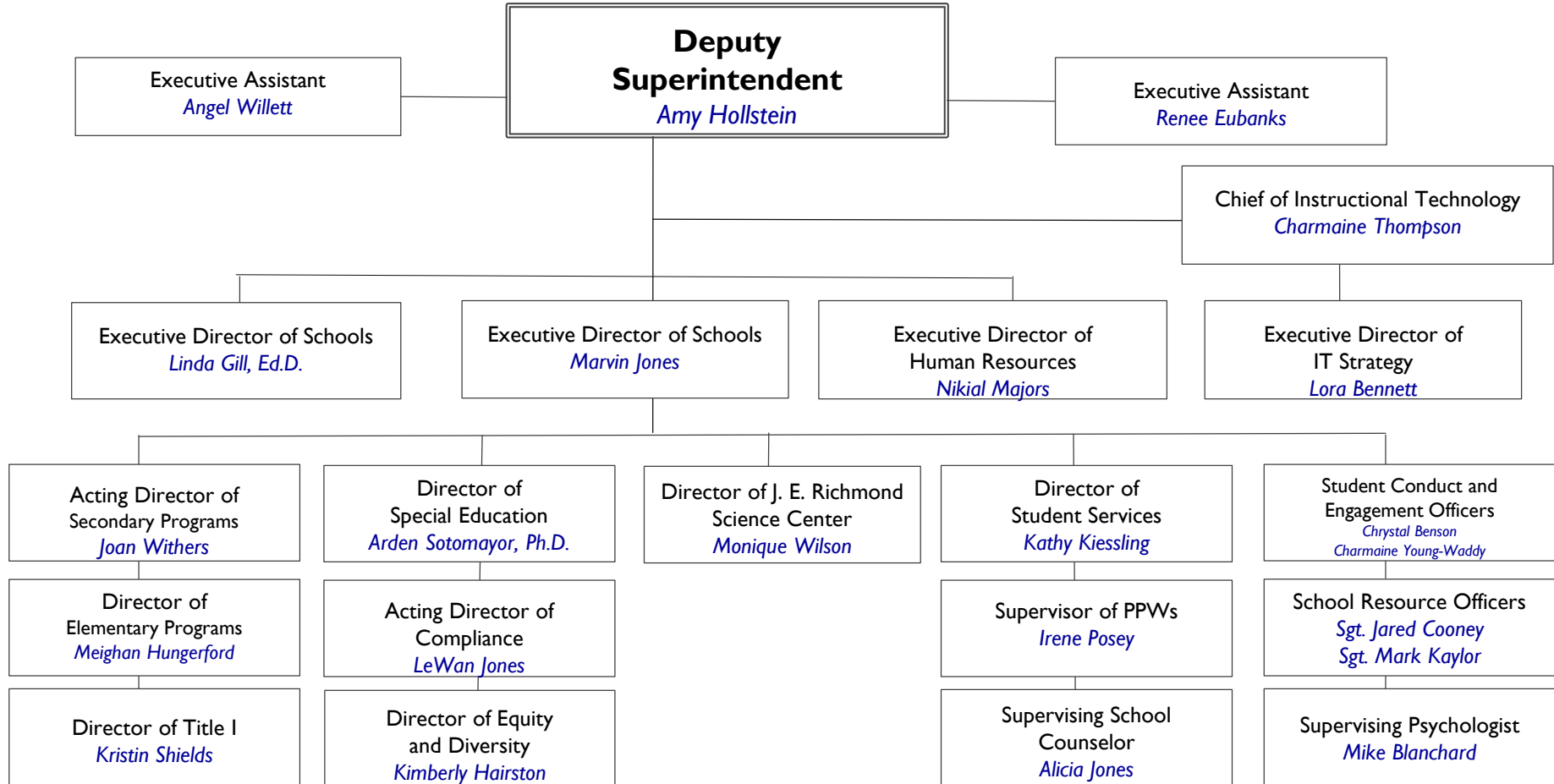


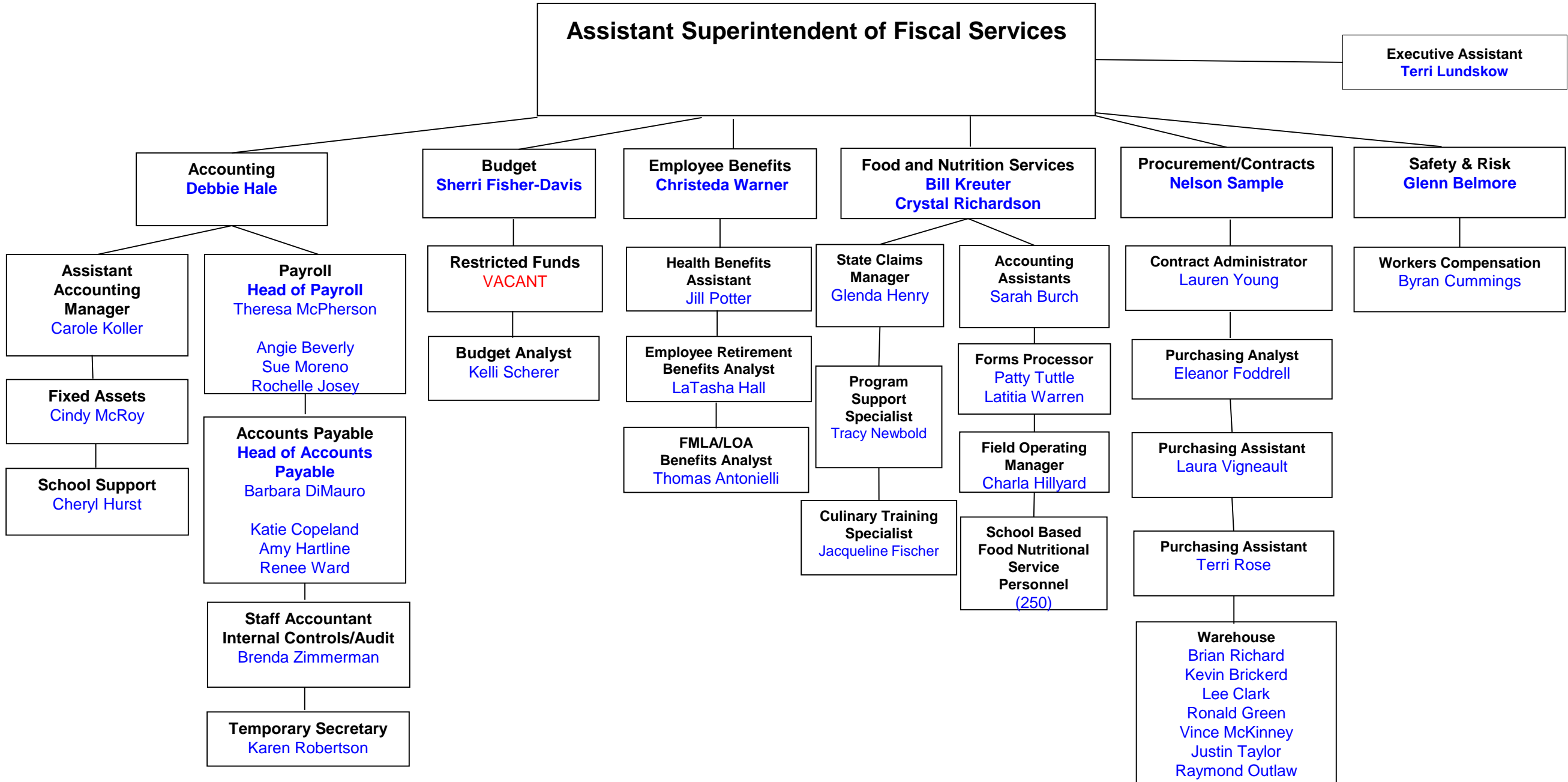
Charles County Public Schools Administrative Organizational Chart



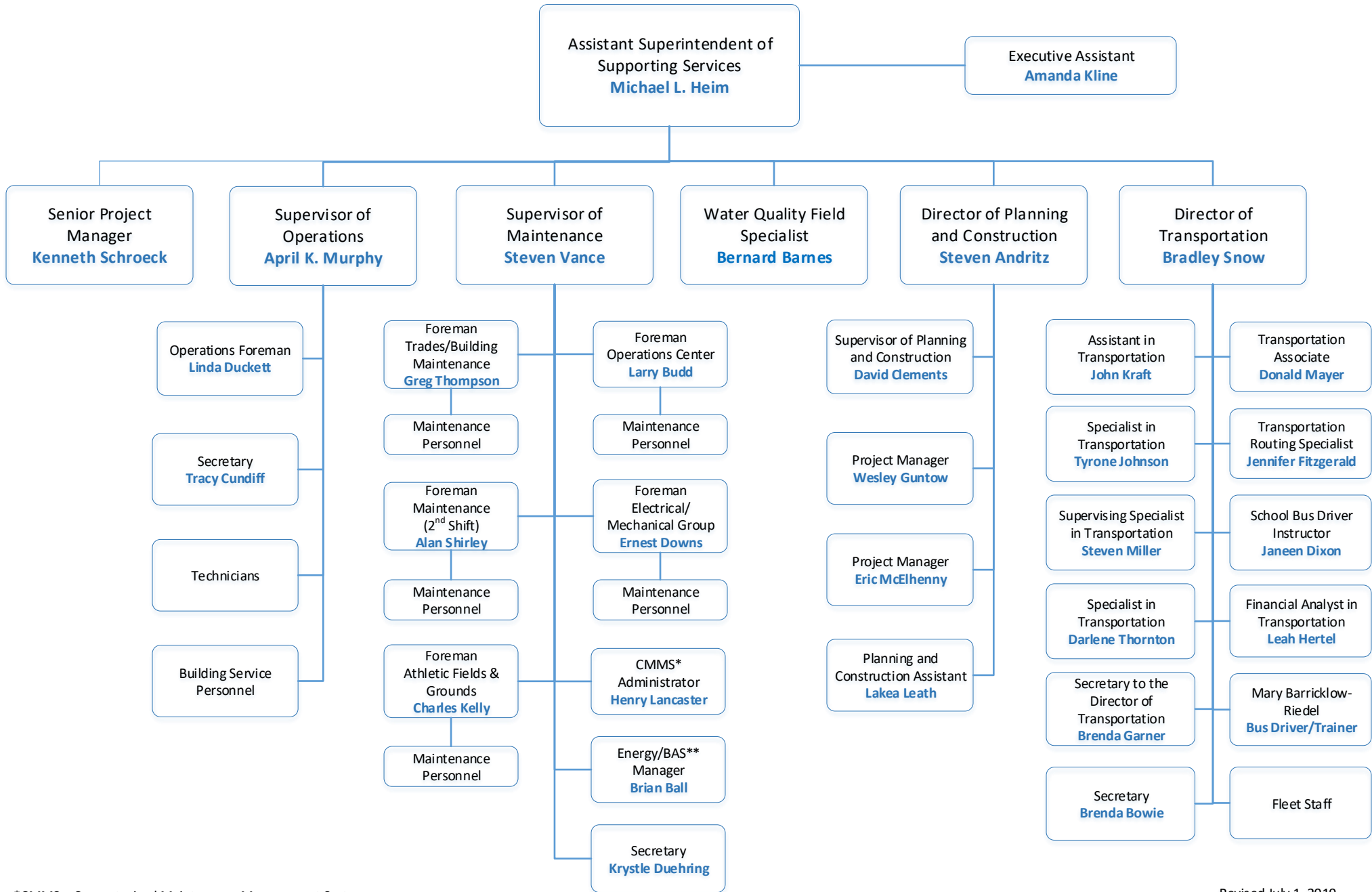
CHARLES COUNTY PUBLIC SCHOOLS
Office of the Deputy Superintendent



OFFICE OF FISCAL SERVICES ORGANIZATIONAL CHART



Office of Supporting Services



*CMMS – Computerized Maintenance Management System
 **BAS – Building Automation Systems