

HANCOCK COUNTY SHERIFF'S OFFICE

*A COMMUNITY ORIENTED
POLICING AGENCY*



2015

200 West Crawford Street

Findlay, Ohio 45840

www.hancocksheriff.org



*Hancock County Justice Center
Built in 1989*

Table of Contents

Introductory Message.....	4
Mission Statement & Guiding Principles.....	5
Organizational Structure.....	6
2015 Employee Awards.....	7-9
Corrections Training	10
Corrections Quick Facts.....	11
Corrections Feature—”Bread & Water: Its Not What’s for Jail Anymore”	12-13
Corrections Statistics.....	14-15
Transport Warrant	16
Civil Process, Support Staff.....	17
Enforcement—General Statistics.....	18-19
Enforcement—Detective & Drug Unit.....	20
Enforcement—K-9 Units.....	21
Enforcement—Security Services	22
Financial Data.....	23-25
Special Units—Volunteer Organizations.....	26-27
Statistical Data.....	Statistics Appendix



A Message From
Michael E. Heldman
Hancock County Sheriff



Dear Citizens of Hancock County:

First of all, we would like to thank you for all of your support. In today's environment, there is a lot of anti law enforcement sentiment. It means a lot to our organization and all of our employees to see our citizens supporting our efforts.

The past year has been a good year for the office. We are looking forward to 2016 as a year of change in some areas of our operation. There have been major changes in law regarding communications operations and we will be updating and expanding our dispatch center to comply with these changes.

In our Annual Report this year we are highlighting training and programming in Corrections. We hope you enjoy learning more about what it takes to be a Corrections Officer.

Thank you for your continued support and we look forward to serving you in 2016.

Sincerely,

Michael E. Heldman

Michael E. Heldman, Sheriff



Mission Statement

The mission of the Hancock County Sheriff's Office is to provide professional services which ensure the safety and security of our citizens, maintain human rights, protect property, and preserve life, by adhering to a philosophy that allows law enforcement and community residents to work together to prevent and solve crime.

Our Guiding Principles

- We are committed to maintaining human rights, the protection of property and the preservation of life.*
- We are committed to professionalism and excellence.*
- We will ensure the safety and security of our citizens.*



Hancock County Sheriff's Office

Organizational Structure



Sheriff Michael E. Heldman
 Captain Roger Treece
 Jail Administrator Lt. Ryan Kidwell



SHERIFF

Fiscal Officer	Captain
----------------	---------

HR Specialist (1)	Lieutenant/Enforcement (1)	Director of Transport/ Writ Process (1)	Lt/Jail Administrator (1)
			Lt/Jail Operations (1)

Road Sergeants (4)	Detective Sgt (1)	Corrections Sgts (5)
--------------------	-------------------	----------------------

Clerks (3)	Road Deputies (15) School Resource Officers (2) Crime Prevention (1)	Detectives (2)	Transport Deputies (5)	Clerks (2)	Corrections Officers (32)
------------	--	----------------	------------------------	------------	---------------------------

Communications Officers (7)	Detectives Drug Unit (2)
-----------------------------	--------------------------



2015 Employee Awards



Peer Nominated Awards

Deputy Sheriff of the Year

Detective Lyle Harvitt

Corrections Officer of the Year

Officer Lauri Lowden

110% Award

Sgt. Jason Seem
Detective Lyle Harvitt

Officer Melvin Yoder
Officer Tyler Von Sossan

Above & Beyond Award

Detective Barry Boutwell
Deputy Joshua Peters

Officer Lori Rizor
Officer Robert Keller

*Congratulations to all award winners.
Your dedication to the Sheriff's Office
is very much appreciated.*

Without our employees, we could not "get the job done".



2015 Employee Awards



Years of Service:

25 years Bill Laveglia
 20 years Jill Schmutz
 Colleen Wedge
 15 years Todd Bucher
 Jason Seem
 10 years T. J. Brooks
 Jim Saltzman
 Nick Clevidence
 5 years Steve Lowery
 Kris Otto



Driving Awards

5 years Matt Brunswick
 Shane Heckman
 Corey Hartman

No Sick Leave Used

Cris Bell
 Mike Cortez
 Rodney Griffin
 Tami Hart
 Shane Heckman
 Matt Kinsinger
 Doug McCartney
 Mike McGuire
 Tom Miller
 Josh Peters
 Mark A. Price
 Lori Rizor
 John Shepard
 Jesse Sterrett
 Ben Stoner
 Barry Turner
 Chad Warren
 Kathy Wefler

Officers of the Month throughout 2015

Matt Brunswick
 Matt Crouch
 Amanda Miller
 Eric Rayle
 Rick Ruppright
 Brian Stozich

Nick Clevidence
 Shane Heckman
 Kris Otto
 Lori Rizor
 John Shepard
 Fred Smith



2015 Employee Awards



Buckeye State Sheriff's Association Awards

BSSA Lifesaving Award:

Steve Lowery

Kris Otto

BSSA Commendation Award:

Amanda Miller

BSSA Certificate of Merit Award:

Jessica Leeth

Lauri Lowden

Fred Smith

Rick Ruppright

BSSA Office Citation:

Matt Brunswick

The BSSA awards are awarded based on the following criteria:

- Lifesaving Award: Awarded to all officers directly responsible for the saving of a human life.
- Commendation Award: For individual(s) who have performed efficient and valuable service to the office, either carrying out a specific task or in the performance of general duties.
- Certificate of Merit: Outstanding performance of duty under unusual or difficult conditions. The action need not involve exposure to physical danger but must involve the protection of life or property and involve unusual thoroughness, conscientiousness, determination and initiative.
- Office Citation: Performance of a difficult task involving personal risk to the employee or because of the actions of the employee, a serious crime is prevented or the perpetrator is apprehended.

Corrections



Corrections Officers are responsible for the safety and security of inmates, other officers and the general public in their duties. Extensive training is required of these officers.

In-House Training:

A newly appointed Corrections Officer is required to go through a rigorous eight week training period which is overseen by a Training Supervisor and Field Training Officers (FTO's). During the eight week training period, the Corrections Officer is assigned to several FTO's on various shifts. This is designed to give the Corrections Officer an overview all of the operations on the corrections floor. It also gives the Corrections Officer different learning styles which come from each individual FTO.

Basic Corrections Training Academy:

Based upon the Standards for Jails in Ohio, the Corrections Officer is required to be instructed in jail policies within sixty days of employment. During the first year of assignment the Corrections Officer is required to attend a 143 hour Basic Corrections Training Academy.

The academy covers topics specific to jail operations such as:

- Administration
- Legal
- Jail Security
- Human Relations
- Special Inmate Needs
- Technical Skills.



Once the Corrections Officer successfully completes the academy he/she is required to successfully complete a state exam to gain certification as a Corrections Officer.

Continuing education:

Eight hours of in-service training is required each subsequent year of employment addressing specific job assignments and/or jail related issues to maintain their certification and compliance with the state.

Corrections

**The Hancock County Justice Center is a 98 bed Adult,
Male and Female, Full Service Jail.**

A Full Service Jail is primarily used to detain adults for more than 120 hours, or 5 days.

2015 Quick Facts

In 2015, the jail booked 2,356 inmates and released 2,339.

- The highest daily population was 123 and the lowest daily population was 77.
- The Average Daily Population for 2015 was 101.
- There were 232 days when the population exceeded the maximum 98 beds.

The jail housed 1,689 males and 667 females. Of the inmates:

- 632 were incarcerated on felony charges
- 1,654 were misdemeanors

The jail served 103,289 meals to prisoners in 2015 for a total cost of \$188,845. Medical services provided to inmates totaled \$315,555.

Predominate Race Incarcerated at the HCJC = Caucasian

Predominate Marital Status Incarcerated at the HCJC = Single

Top Five Incarcerating Offenses:

1. Miscellaneous (Includes forgery, petty theft, passing bad checks, misdemeanor assault, etc.-those crimes that do not fit by definition into any other collecting categories)
2. Traffic Offenses
3. Alcohol Related Offenses
4. Drug Offenses
5. Property Offenses

Corrections

BREAD AND WATER: IT'S NOT WHAT'S FOR JAIL ANYMORE



A lot has changed for the operation of a jail since those days when bread and water was the only thing that inmates had to look forward to. As courts became more involved with the rights of those incarcerated and the standards for jails evolved, programming has become a big part of an effective change for those incarcerated in becoming positive productive citizens upon their release from incarceration.

The Hancock County Justice Center prides itself on the array of programs and services offered to those incarcerated. Today's programming focuses on the science of evidence based practice in addressing individual need as well as levels of criminogenic risk, substance abuse and mental illness.

By following the science, we are able to provide more individualized programs based on risk and need. In doing so, it separates those with higher risk from those with medium risk so those with medium risk do not learn higher levels of risky behaviors. This in turn provides for better outcomes while encouraging continuation of services once released. Hancock County Justice Center programming provides somewhat of a wrap-around approach to assure that risk and need is addressed prior to discharge from incarceration. Programming offered includes:

- **Full Time Licensed Social Worker** to provide crisis stabilization and one on one counseling.
- **Case Management** to assist with discharge planning for those with mental health and substance abuse or any other individual needing utilization of this service.
- **Peer Support** to assist Case Management and the inmate through their time of discharge as a support system. Peer supports are those individuals who have dealt with similar circumstances at some point in their life and are now in recovery living positive lives serving as role models.
- **Cognitive Behavioral Therapy (CBT)**
CBT was derived from a Criminal Justice and Behavioral Health Linkages Grant through the Ohio Department of Mental Health and Addiction Services. This program evolved through a "Shared Framework for Reducing Recidivism and Promoting Recovery". The framework was conjointly developed between the National Institute of Corrections, Council of State Governments Justice Center and the Bureau of Justice Assistance. It weaves together the science of risk and need to provide an approach to achieve better outcomes for adults in contact with the criminal justice system with substance use disorders, mental illness, or both. It provides a way to col-

Corrections

lectively improve the lives of people with mental illness and substance use disorders while improving public safety.

Risk assessment tools are used with the framework. They include Gaines SS – For Mental Health and Substance Abuse; SBIRT – Screening, Brief Intervention and Referral to Treatment and ORAS – Ohio Risk Assessment Tool which include both a mini and full screener for Criminogenic Risk, Substance Abuse, Mental Illness.

Occupational Therapy (Provided by the University of Findlay Occupational Therapy Department) OT program utilizes assessments and treatment to develop, recover or maintain daily living and work skills of people with a physical, mental or cognitive disorder. OT focuses much of their work on identifying and eliminating environmental barriers to independence and participation in daily activities. This in turn helps individuals participate in the things they want and need to do through everyday activities. Occupational Therapy addresses the holistic needs of those incarcerated through five, one week modules. Those modules include: Employment, Interpersonal Communications, Financial, Housing and Community Supports, Leisure.

- **Academic and Educational Training**
 - GED, Literacy (Read for Life)

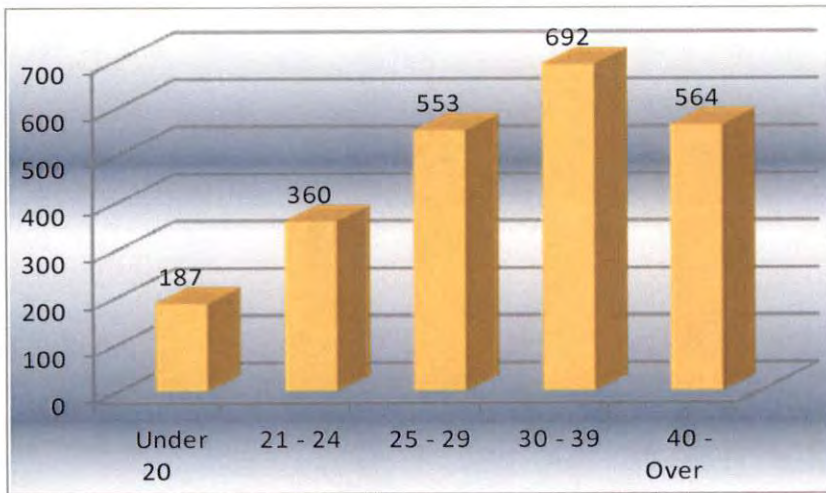
- **Spiritual Growth and Religion**
 - Church Services
 - Bible Study
 - Dad's Coaching Clinic
 - Celebrate Recovery
 - Weekly Spiritual / Motivational Program with Jim Woodward

- **Alcohol and Drug Abuse Treatment**
 - Alcoholics Anonymous,
 - Narcotics Anonymous

- **Psychological and Social Services – Century Health provided services**

- **Other Programs and Available Community Services**
 - Getting Ahead Program
 - FHPL Book Discussions
 - Library Program
 - Art Program
 - Domestic Violence Program

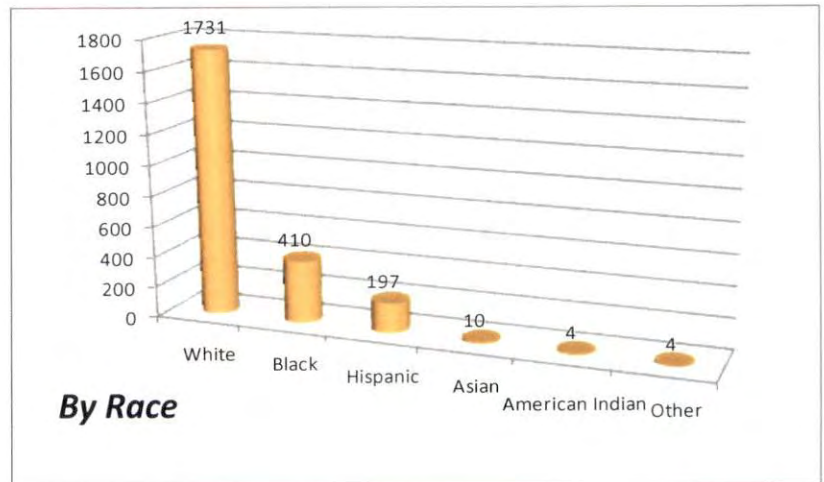
Corrections



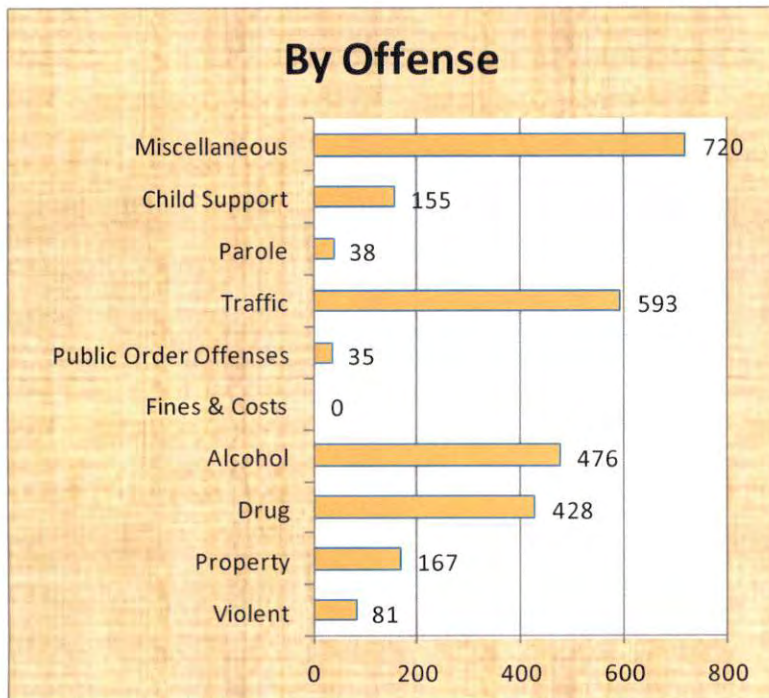
By Age Group



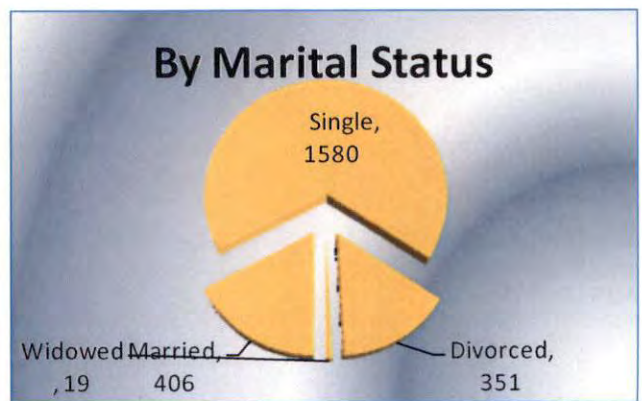
For more interesting statistics for the jail, see the attached statistical appendix.



By Race



By Offense



By Marital Status

Corrections

Programs

Mental Health on site counseling for inmates	1,552
AA Male/Female	752
GED	122
Dad's Coaching Clinic	153
Occupational Therapy	597
Domestic Violence Program	296
Bible Study Male/Female	520
Church Services, Non Denominational	748
Inmate Worker Program Male/Female	462
Inmate Worker Outside Details	17
Inmate Worker Car Wash/Wax Deputy Cruisers	261

Medical

Inmates who requested Medical Intervention	1,382
Inmates who requested Mental Health Intervention	1,095
Inmates seen by the facility doctor	713
Inmates seen by facility nursing staff	1,278
Inmates seen by officer	762

*There are many more statistics tracked by the Corrections Staff.
For full statistics, see Statistics Appendix*

Transport Warrant

The Transport/Warrant unit is responsible for transporting prisoners to and from court, other facilities, and medical appointments. T/W also provides courthouse security for all county courts. Warrant tracking is also a function of this office, as is Sex Offender Registration, Concealed Carry Weapon licensing and civilian and juvenile fingerprinting.

Transport/Warrant had 1,007 adult escorts for court, transported 175 adults to other institutions and took 145 trips transporting 182 juveniles to other facilities in 2015, travelling 27,202 miles over 775 hours. T/W personnel spent 2,829 hours providing court security, including Common Pleas, Juvenile, Findlay Municipal Court, and the in-house courtroom for arraignments. This total also includes 2,285 hours at the West Entrance of the Courthouse. A total of 73,131 people went through security at the Courthouse in 2015.

There were 296 Sex Offender registrations, of which 8 were juvenile offenders, registered with this office in 2015. The unit spent 195 hours registering these offenders.

Transport/Warrant also performed 3 Arson registrations.

The Sheriff's Office issued 765 CCW (Concealed Carry Weapon) permits spending 599 hours, and performed fingerprints on 118 civilians, and 16 juveniles that were sent from Juvenile Court.

1,115 warrants were entered into the system in 2015. The unit archived 1,157 open warrants, closing out the files.

There were 10 extraditions, travelling 5,018 miles, taking 74.25 hours.



Also of note:

*The Records Clerk processed 4,120 reports,
fulfilled 1,089 public records requests,
and performed 433 local background checks for the public.*

Civil Process and Support Staff

Civil Process

Civil Process is the processing of all paperwork related to civil and criminal court papers, including Sheriff's Sales, as received from the court system.

The office received 1,697 civil papers to process, and 1,437 papers were served by the Road Patrol. There were 150 CPO's (Civil Protection Orders) issued by the court and served through the Sheriff's Office

In 2015, the office received 205 Orders of Sale of real property. There were 170 appraisals performed and 128 made it through to sale without being withdrawn.



Support Staff

The Support Staff is comprised of 7 employees. The Corrections Clerks are responsible for all paperwork produced in the jail. They process all commissary payments and accounts, maintain and store all inmate records, maintain policy and procedure manuals and assist the Corrections staff.

On the Enforcement level, the Support Staff is responsible for answering non-emergency phones, maintaining all records related to enforcement, expungements, records retention, processing all civil papers in and out of the office, Sheriff's Sales processing, payroll, human resource functions, maintaining fixed asset records, receipt of monies, invoicing of services, accounts payable, budgeting, and financial analysis.

The Support Staff also organizes the Annual Banquet, prepares the Annual Report, collects statistics, manages the Web page and Facebook page, and all other office functions.

Enforcement

2015 Township & Village Statistics

	<u>Incidents</u>	<u>Citations</u>
Allen	248	85
Mortimer	3	0
Van Buren	28	73
Amanda	67	30
Vanlue	45	2
Biglick	52	56
West Independence	0	0
Blanchard	48	67
Benton Ridge	10	3
Cass	74	78
Delaware	84	43
Mt. Blanchard	39	4
Eagle	65	76
Findlay	233	299
Jackson	86	213
Houcktown	4	0
Liberty	676	243
Madison	73	40
Arlington	90	25
Williamstown	4	0
Marion	246	176
Orange	86	65
Pleasant	77	28
McComb	46	6
Shawtown	0	0
Portage	46	26
Union	81	58
Mt. Cory	22	1
Rawson	50	6
Van Buren	36	30
Jenera	11	1
New Stark	0	0
Washington	102	193
Arcadia	49	12
Other	146	25
(Fostoria, Bluffton, other)		
<u>Totals</u>	2927	1964

Enforcement

2015 Accident Statistics

There were a total of 868 vehicle accidents handled by the Sheriff's Office in 2015.

Nine individuals lost their lives in 8 accidents last year in the county. Of the 9 fatalities:

- 6 were in the evening
- 2 were not wearing seat belts
- 2 on motorcycle were not wearing helmets
- 2 were distracted by texting

Factors:

- 3 were for ACDA (assured clear distance)
- 2 were improper lane change
- 2 were failure to control
- 2 were failure to yield

Agency handling:

- 6 by Hancock County Sheriff's Office
- 2 by Ohio State Highway Patrol
- 1 by Findlay Police Department

2015 Top Cop Program

The following Deputies were recognized for their diligence in executing their investigations, resulting in the following:

Top OVI arrests:

- | | |
|-------------------|----|
| 1. Matt Brunswick | 24 |
| 2. Shane Heckman | 13 |
| 3. Kris Otto | 12 |

Top Drug Arrests:

- | | |
|-------------------|----|
| 1. Matt Brunswick | 42 |
| 2. Steve Lowery | 30 |
| 3. Tom Miller | 23 |

There were a total of 99 OVI arrest and 148 drug arrests executed by road patrol deputies in 2015. This does not include Detective Unit and Drug Unit activity.

June and August tied for top months for OVI arrests with 13 each. January and March each had 10 arrests. For Drug arrests, July was the largest month at 23, with January and August having 17 each.

Enforcement

★ Sheriff's Line - Do not cross ★ Sheriff's Line - Do not cross ★

Detective Unit



The Detective unit consists of a sergeant and four detectives, two of which are assigned to the METRICH Task Force. The unit is also responsible for juvenile assault and abuse cases as well as all cases which require more in depth investigation than is provided by the road patrol. The detective unit was assigned 156 cases in 2015 and cleared 135, resulting in 69 arrests.

METRICH Drug Task Force

The HCSO Detective Unit is part of a ten county drug task force called METRICH. METRICH is one of the few de-centralized task forces in the State of Ohio promoting a Community Policing philosophy approach to task force operations. METRICH is also the largest drug task force in Ohio. The Sheriff's Office and the Findlay Police Department joined METRICH in October of 1999. METRICH is funded through the Office of Criminal Justice Services under Chief Phil Messer of the Mansfield Police Department.

The METRICH unit opened 175 new cases in 2015 and closed 175. These cases involved 115 defendants and 27 search warrants were issued to the unit. *The 175 new cases in 2015 is the largest number of new cases in a year in the history of the METRICH Task Force.*

A 2015 Highlight: News release October 16, 2015

"On 10/15/2015 Detectives from the Hancock County METRICH Drug Task Force obtained a search warrant through the Findlay Municipal Court for the residence at 1730 Lima Avenue Apt. 4, Findlay, Ohio. On 10/16/2015 at 0630 hours the search warrant was executed by detectives from the task force with the assistance of the Findlay Police Department.

A search of the residence yielded cash, drug paraphernalia, items commonly used to manufacture methamphetamine, and chemicals used to manufacture methamphetamine.

As a result of this investigation Kylie Sue Rader, 36 years of age from Findlay, and Thomas Turner, 50 years of age, also from Findlay, were arrested and charged with assembly of chemicals to manufacture drugs/methamphetamine, a felony of the third degree. The investigation is ongoing and additional criminal charges are expected in the future.

Also assisting with this investigation was the Ohio BCI & I Clandestine Drug Lab Unit."



Hancock County Sheriff's Office

K-9 Units

K-9 Charlie & Deputy Brunswick

K-9 Sonny & Sgt. Miller

K-9 Sonny

Narcotics vehicle searches	46
Narcotics building searches with Metrich/ERT	4
Jail Searches	9
School Searches	4
Tracks	2
Area Searches	4
Aggression uses with arrest and no physical bite	3
Public Demonstrations	31

K-9 Charlie

Building Searches	4
Vehicle drug searches	41
Suspect tracks (4 suspects located & arrested)	13
Area searches	5
Jail searches	8
School searches	1
K9 demonstrations	14
Public Relations	7
Miscellaneous (Search of Justice Center)	1

Highlights:

- Traffic stop with the Findlay PD. Called K9 Sonny with an indication: 20 grams of marijuana , 4 grams of hash with \$1,000 cash seized.
- State Highway Patrol stop with K9 Sonny used: \$34,700 cash and 41 ecstasy pills located.
- State Highway Patrol stop with K9 Sonny : several falsified prescription labels and 2,000 prescription pills located in the vehicle heading southbound in I75.
- State Highway Patrol stop with K9 Sonny: location of 27 Aderall and 293 Hydrocodone pills in the vehicle.
- State Highway Patrol stop with a northbound vehicle locating numerous fake prescription bottles for marijuana and \$3,000 cash hidden under rear seat.
- State Highway Patrol stop southbound with K9 Sonny: indication on vehicle with 11 stolen credit cards and nearly 30 stolen credit card numbers located hidden in the vehicle.
- Assist Findlay PD on a pursuit out of the city; stopped on County Road 180; indication with K9 Sonny: numerous Heroin items located after theft from Wal-Mart
- Spent 5 days working the Hancock County Fair; made an arrest using K9 Sonny in the camping area.

Agencies requesting assistance: Ohio State Highway Patrol, Wood County Sheriff's Office, Wyandot County Sheriff's Office, METRICH Drug Task Force, Findlay Police Department.

Highlights:

- Findlay PD requested K9 track for a suspect with 2 felony warrants who fled the rear window of a residence. K9 Charlie tracked to the rear of a neighboring property & found the suspect hiding behind pine trees.
- Wood County Sheriff requested K9 assist to locate missing 9 year old boy who had run away from home and stolen a gator at a nearby property. K9 Charlie located & tracked the boy through a woods.
- Findlay PD requested K9 for vehicle drug sniff; K9 Charlie indicated; Crack cocaine and drug paraphernalia were located inside the vehicle along with 2 purses, which were found to be stolen that night. Driver was linked to several recent Breaking & Entering incidents in the area.
- K9 Charlie was requested for a suspect track who had eluded deputies after a foot pursuit in Riverview Terrace; Charlie tracked suspect through the trailer park and found suspect hiding under thick brush in a nearby woods.
- Deputies stopped a stolen vehicle & an intoxicated subject refused to exit the vehicle. K9 Charlie began barking & the suspect was given warning commands to surrender. Suspect decided to surrender.

Agencies requesting assistance: Findlay Police Department, Wood County Sheriff's Office, METRICH Drug Unit, Ohio State Highway Patrol

Enforcement

Sheriff's Office Contract Activity

The Sheriff's Office contracts for patrol services with the Hancock County Park District, the Village of Arlington, the Village of Van Buren, the Village of Jenera, and the Village of Rawson. Contracts allow the entity to receive dedicated patrol hours, for which they pay an hourly fee. Below is a summary of activity for these contracts for 2015:

Park District	2,185.25 hours patrol 11 incidents were recorded 10 citations issued 3 warnings issued
Arlington	780.75 hours patrol 32 incidents were recorded 5 crashes occurred 20 citations issued 16 papers were served Walkthroughs conducted: 3 school 12 bank 41 business
Van Buren	185 hours patrol 8 incidents were recorded 69 citations issued Walkthroughs conducted: 14 school 4 business
Jenera	90 hours patrol 6 incidents were recorded 1 crash occurred 1 citation issued Walkthroughs conducted: 1 business 1 meeting attended
Rawson	68.5 hours patrol 5 incidents were recorded 4 citations issued 7 papers served 1 meeting attended

Financial Data

Funds for the Sheriff's Office are allocated through the Hancock County Commissioners. Each year a request is submitted for funding. The Commissioners gather these requests from all county offices. Requests are then compiled and totals compared to estimated revenues. If request exceed estimated revenues, the offices are asked to reduce their requests. Any changes needed during the year must be approved by the Commissioners through resolution.

The majority of funding for the Sheriff comes through the General Fund. There are a few special funds set up based on Ohio Revised Code (ex: CCW, Commissary, METRICH funds, grant funds, etc.) that receive and spend funds based on specific laws.

Analysis reports are done monthly and the budget is constantly being monitored to assure that the budget is being adhered to. The budgeting process for the upcoming year starts early each year and is fine tuned based on current activity, until Budget Hearings are held in early November.

All financial records are public and can be viewed at any time. Please feel free to call the Office with any questions regarding the stewardship of your tax dollars.

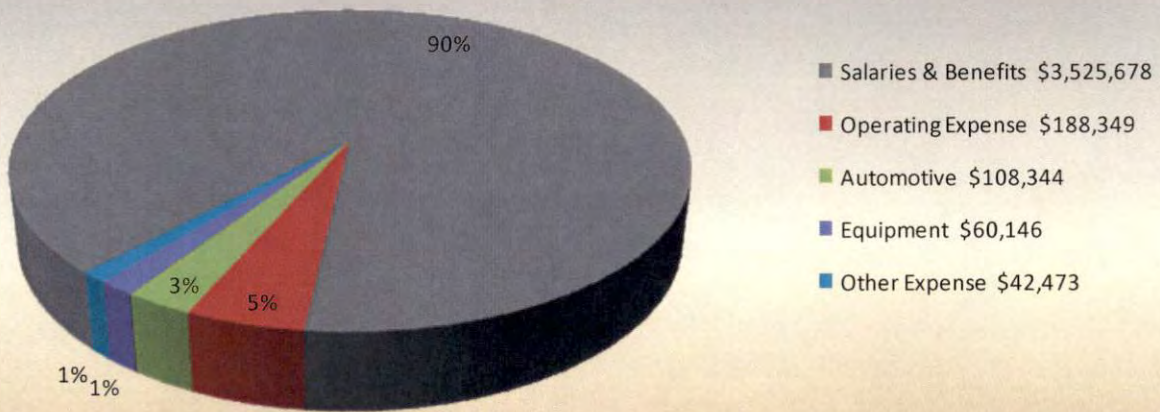
Funds Received	2013	2014	2015
Paper Service Fees	\$ 130,988	\$ 124,051	\$ 111,700
Prisoner Housing	\$ 602,666	\$ 739,083	\$ 794,224
Other Misc Receipts	<u>\$ 44,900</u>	<u>\$ 45,692</u>	<u>\$ 91,207</u>
Total Deposited into General Fund	\$ 778,553	\$ 908,825	\$ 997,131
Contracted Security Services	\$ 115,933	\$ 106,266	\$ 196,901
Drug Fines	\$ 3,602	\$ 2,458	\$ 4,165
DUI Traffic Fines	\$ 1,897	\$ 1,546	\$ 1,570
Commissary Receipts - Jail	\$ 87,761	\$ 86,739	\$ 98,040
Concealed Carry Weapon Permits	\$ 79,962	\$ 46,347	\$ 51,329
Arson Registration	\$ -	\$ 75	\$ 75
SORN Registration	\$ -	\$ 300	\$ -
METRICH Funds	\$ 21,456	\$ 20,951	\$ 11,969
Grant Receipts	<u>\$ 69,924</u>	<u>\$ 36,557</u>	<u>\$ 50,256</u>
TOTAL RECEIPTS	\$ 1,159,089	\$ 1,210,065	\$ 1,411,435

Financial Data

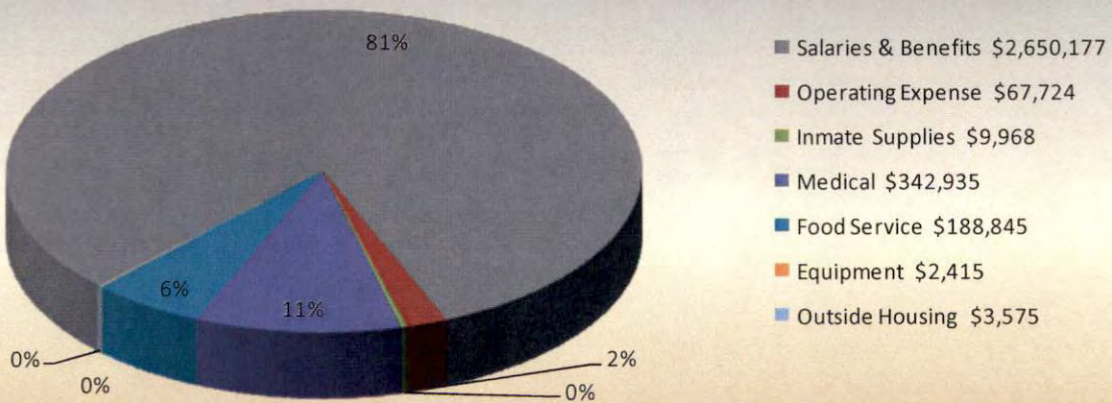
Expenditures	2013	2014	2015
<u>General Office</u>			
Salaries & Benefits	\$ 342,478	\$ 342,128	\$ 363,662
Operating Expense	\$ 84,878	\$ 141,365	\$ 95,074
Equipment	\$ 60,509	\$ 6,400	\$ 19,838
Other Expense	\$ 41,953	\$ 37,816	\$ 42,473
Total General Office	\$ 529,819	\$ 527,709	\$ 521,046
<u>Transport Warrant</u>			
Salaries & Benefits	\$ 442,608	\$ 419,823	\$ 443,294
Operating Expense	\$ 1,032	\$ 985	\$ 714
Total Transport Warrant	\$ 443,640	\$ 420,809	\$ 444,008
<u>Enforcement / Road Patrol</u>			
Salaries & Benefits	\$ 2,438,686	\$ 2,571,702	\$ 2,718,722
Operating Expense	\$ 61,596	\$ 79,794	\$ 92,561
Automotive	\$ 175,406	\$ 146,355	\$ 108,344
Equipment	\$ 57,616	\$ 34,270	\$ 40,308
Total Enforcement / Road Patrol	\$ 2,733,303	\$ 2,832,121	\$ 2,959,935
Total Enforcement	\$ 3,706,762	\$ 3,780,638	\$ 3,924,989
<u>Corrections</u>			
Salaries & Benefits	\$ 2,392,066	\$ 2,543,897	\$ 2,650,177
Operating Expense	\$ 57,861	\$ 63,289	\$ 67,724
Inmate Supplies	\$ 7,986	\$ 8,000	\$ 9,968
Medical	\$ 271,106	\$ 304,590	\$ 342,935
Food Service	\$ 174,999	\$ 178,321	\$ 188,845
Equipment	\$ 6,560	\$ 32,468	\$ 2,415
Outside Housing	\$ -	\$ -	\$ 3,575
Total Corrections	\$ 2,910,577	\$ 3,130,565	\$ 3,265,638
Total Sheriff General Fund	\$ 6,617,339	\$ 6,911,203	\$ 7,190,628

Financial Data

Enforcement Expenses by Category



Corrections Expenses by Category



For complete financial statistics, see the attached statistical appendix.

Special Units—Volunteer Organizations

Explorer Post:

The Law Enforcement Explorer Post has been active for close to 30 years at the Sheriff's Office. Our advisor is Mike McGuire. The post meets twice a month. The Explorers assist with many events including the Balloon Fest, both craft shows held at the fairgrounds and the Hancock County Fair.

Training is held at each meeting and members can ride along with deputies if they choose. This program allows teens to explore the profession and decide if this is a career path they would like to choose. There are currently around 10 members in the group.

Special Deputy Organization

The Special Deputy Organization is comprised of 27 citizens who are trained to assist law enforcement agencies. This organization is responsible for security at the county schools' football and basketball games and the Hancock County Fair.



These individuals log several thousand volunteer hours, including the hours at the Hancock County Fair. They also provide services for a variety of other special events around the county each year, including the Spring and Fall Craft Shows held at the fairgrounds. Other details included the Flag City Multi-sport Event, various parades and traffic details, school dances and other functions as requested.

Posse

The Posse is a unit of the Special Deputy Organization and is utilized in parades and at the fair. The unit is also available for special duties which might arise where crowd control is an issue. The group also provided security presence in the Findlay Village Mall parking lot during the holiday shopping season.

Each certified posse member has had to undergo rigorous training with their horse and pass tests to determine that they and their mount are qualified to handle themselves in stressful situations. These volunteers provide their own gear and mount, and participate in all training on their own time and money.

There are currently 16 Posse members in the unit.



Special Units—Volunteer Organizations

Underwater Search & Recovery Team

This unit is specially trained in underwater search and recovery, and has been utilized many times to search the reservoir, the Blanchard River, and area ponds and streams when the need arises. There are approximately 19 members on the team, including divers, boat crew, boat captain and the land crew.

The unit undergoes regular training sessions throughout the year to strengthen their skills and teamwork.



Bike Patrol

The Bike Patrol provides services in areas where cruisers cannot be utilized. They are also utilized for special events such as parades, 5k runs, and the Balloon Fest.

This unit must go through training to learn how to handle their bicycles in all kinds of terrain and situations. They are certified at the end of their training.

There were a lot of miles covered working the Hancock County Fair, Balloon Fest 5K Run, Special Olympics Torch Run and many other activities. The Patrol has a total of 8 bikes and 12 riders.



★ Sheriff's Line - Do not cross ★ Sheriff's Line - Do not cross ★



OUT AND ABOUT
IN 2015



**Hancock County Sheriff's Office
2015 Statistics
Patrol -General Statistics**

Category	Jan	Feb	Mar	Apr	May	Jun	Jul	Aug	Sep	Oct	Nov	Dec	Total
Total Calls for Service	199	172	191	199	237	230	222	224	249	250	247	204	2624
Arrests													
Complaint	0	1	2	3	11	5	2	5	2	6	2	0	39
Crime in Progress	4	1	3	3	5	8	2	4	4	1	6	0	41
Warrant	0	0	1	0	0	0	0	0	0	0	0	0	1
Court Summons / Citation	0	3	1	0	0	2	1	1	2	0	1	0	11
Order of Protection	0	0	0	0	0	0	0	0	0	0	0	0	0
Other	0	0	0	0	0	0	1	0	0	1	0	0	2
Total Arrests	4	5	7	6	16	15	6	10	8	8	9	0	94
Towed Vehicles	4	6	4	0	1	3	6	3	3	1	2	4	37
Alarm Calls													
Business	5	2	8	4	4	7	9	1	6	3	6	4	59
Residential	12	10	11	16	11	11	11	12	9	10	10	7	130
Schools	4	2	0	5	1	2	2	4	5	1	1	0	27
Other County Offices	2	2	1	0	1	2	2	1	1	0	0	0	12
Total Alarm Calls	23	16	20	25	17	22	24	18	21	14	17	11	228
Alarm \$ Billed	\$ -	\$ -	\$ -	\$ 50.00	\$ 50.00	\$ -	\$ 50.00	\$ 100.00	\$ -	\$ -	\$ 50.00	\$ 150.00	\$ 450.00
Alarm \$ Received	\$ -	\$ -	\$ -	\$ -	\$ 50.00	\$ -	\$ -	\$ 50.00	\$ 100.00	\$ -	\$ -	\$ 50.00	\$ 250.00
Patrol Car Stats													
Miles Driven	48,444	43,050	51,720	52,208	53,080	45,195	47,363	52,297	50,746	52,986	47,289	47,518	591,896
Gallons of Gas	3,444.9	3,101.3	3,582.3	3,338.7	3,605.6	3,242.9	3,328.3	3,608.7	3,559.2	3,672.3	3,298.3	3,352.2	41,134.8
MPG	14.06	13.88	14.44	15.64	14.72	13.94	14.23	14.49	14.26	14.43	14.34	14.18	14.39
Total \$ Purchased	\$ 5,393.65	\$ 5,961.70	\$ 7,287.52	\$ 6,842.59	\$ 9,142.08	\$ 8,289.51	\$ 7,784.63	\$ 7,057.68	\$ 6,519.36	\$ 7,285.67	\$ 5,584.02	\$ 5,150.48	\$ 82,298.89
Price per Gallon	\$ 1.566	\$ 1.922	\$ 2.034	\$ 2.049	\$ 2.536	\$ 2.556	\$ 2.339	\$ 1.956	\$ 1.832	\$ 1.984	\$ 1.693	\$ 1.536	\$ 2.001

Hancock County Sheriff's Office
2015 Statistics
Criminal - General Statistics

Category	Jan	Feb	Mar	Apr	May	Jun	Jul	Aug	Sep	Oct	Nov	Dec	Total
<u>Criminal Investigations</u>													
Assigned Cases	11	7	19	15	14	14	9	14	14	12	14	13	156
Cleared Cases	10	11	10	13	13	10	9	10	15	12	14	8	135
# of Arrests	1	7	3	7	9	7	1	5	6	9	7	7	69

<u>Metrich - Hancock County</u>													
# of Defendants	6	6	13	7	13	15	6	11	7	9	12	10	115
New Cases	12	4	17	17	9	12	14	19	24	14	19	14	175
Closed Cases	12	4	17	17	9	12	14	19	24	14	19	14	175
Search Warrants	2	2	2	1	0	2	1	3	3	4	5	2	27

Hancock County Sheriff's Office
2015 Statistics
Enforcement - Incident Reports

Township & Village Incident Reports	Jan	Feb	Mar	Apr	May	Jun	Jul	Aug	Sep	Oct	Nov	Dec	Total
Allen	17	14	18	27	35	24	30	14	22	23	14	10	248
Mortimer	0	0	0	0	0	1	0	0	0	0	2	0	3
Van Buren	1	3	2	3	5	2	5	1	3	1	0	2	28
Amanda	5	4	4	1	4	9	8	9	4	8	7	4	67
Vanlue	3	2	1	4	7	3	3	5	5	5	5	2	45
Biglick	7	4	2	2	8	8	3	4	3	5	2	4	52
West Independence	0	0	0	0	0	0	0	0	0	0	0	0	0
Blanchard	3	3	6	4	8	3	5	3	3	5	2	3	48
Benton Ridge	0	1	2	0	1	0	1	1	2	0	1	1	10
Cass	6	9	5	6	7	5	6	3	11	4	4	8	74
Delaware	5	4	4	9	13	4	9	4	9	4	11	8	84
Mt. Blanchard	5	4	3	4	4	2	5	6	1	1	3	1	39
Eagle	5	4	5	8	7	8	6	3	4	3	7	5	65
Findlay	15	12	10	24	15	20	26	23	24	24	16	24	233
Jackson	6	4	6	9	11	4	9	6	4	10	10	7	86
Hocktown	1	0	0	0	1	0	0	0	0	0	0	2	4
Liberty	55	37	65	67	62	67	58	65	54	62	50	34	676
Madison	6	5	8	5	5	6	11	12	6	4	4	1	73
Arlington	7	5	6	7	9	9	8	4	10	8	9	8	90
Williamstown	0	0	1	0	1	1	0	0	0	1	0	0	4
Marion	24	14	15	25	18	25	26	22	27	15	18	17	246
Orange	4	2	11	5	3	7	8	8	16	11	6	5	86
Pleasant	5	5	5	9	5	9	6	8	9	7	2	7	77
McComb	5	4	2	3	5	2	2	5	5	8	3	2	46
Shawtown	0	0	0	0	0	0	0	0	0	0	0	0	0
Portage	3	5	5	6	3	3	2	5	4	1	2	7	46
Union	7	5	5	7	11	8	7	9	8	8	2	4	81
Mt. Cory	2	2	0	2	3	1	3	1	1	1	3	3	22
Rawson	1	3	2	5	5	4	3	7	8	4	5	3	50
Van Buren	9	2	1	5	1	1	3	4	3	2	4	1	36
Jenera	1	0	0	3	1	1	3	1	0	0	1	0	11
New Stark	0	0	0	0	0	0	0	0	0	0	0	0	0
Washington	11	10	5	9	6	10	11	11	8	5	4	12	102
Arcadia	2	4	5	3	1	6	2	1	6	4	7	8	49
Other	11	7	7	12	13	12	8	7	14	20	23	12	146

Totals	232	178	211	274	278	265	277	252	274	254	227	205	2927
---------------	------------	------------	------------	------------	------------	------------	------------	------------	------------	------------	------------	------------	-------------

Hancock County Sheriff's Office
2015 Statistics
Enforcement - Citations

Citation Summary

Township & Village

	Jan	Feb	Mar	Apr	May	Jun	Jul	Aug	Sep	Oct	Nov	Dec	Total
Allen	8	3	3	2	13	4	4	11	4	11	15	7	85
Mortimer	0	0	0	0	0	0	0	0	0	0	0	0	0
Van Buren	6	0	4	0	13	5	5	15	6	7	7	5	73
Amanda	1	2	0	0	9	0	4	5	0	3	6	0	30
Vanlue	0	0	1	1	0	0	0	0	0	0	0	0	2
Biglick	6	5	10	0	10	4	1	10	4	3	0	3	56
West Independence	0	0	0	0	0	0	0	0	0	0	0	0	0
Blanchard	8	10	6	19	2	5	9	4	0	2	0	2	67
Benton Ridge	1	0	1	0	0	0	1	0	0	0	0	0	3
Cass	14	2	10	5	5	3	6	11	10	3	2	7	78
Delaware	5	4	1	5	6	2	5	3	0	5	6	1	43
Mt. Blanchard	1	0	0	0	0	1	1	1	0	0	0	0	4
Eagle	5	5	6	6	5	8	3	6	4	9	9	10	76
Findlay	24	18	17	19	32	11	23	39	29	28	21	38	299
Jackson	37	15	8	7	22	9	30	28	23	5	19	10	213
Houcktown	0	0	0	0	0	0	0	0	0	0	0	0	0
Liberty	17	25	20	18	31	20	24	25	16	19	9	19	243
Madison	2	2	6	4	6	2	3	3	3	3	4	2	40
Arlington	1	1	3	2	3	1	6	3	1	1	3	0	25
Williamstown	0	0	0	0	0	0	0	0	0	0	0	0	0
Marion	17	13	17	14	10	11	15	19	20	11	12	17	176
Orange	3	3	11	11	3	7	8	7	4	5	3	0	65
Pleasant	3	4	5	2	1	1	3	4	1	3	1	0	28
McComb	0	0	2	1	3	0	0	0	0	0	0	0	6
Shawtown	0	0	0	0	0	0	0	0	0	0	0	0	0
Portage	0	3	1	3	1	1	1	6	3	3	1	3	26
Union	4	4	4	3	6	2	7	9	9	2	6	2	58
Mt. Cory	0	0	0	0	0	0	0	0	1	0	0	0	1
Rawson	0	4	0	0	1	1	0	0	0	0	0	0	6
Van Buren	2	11	0	9	0	3	1	1	2	0	0	1	30
Jenera	0	0	0	0	0	0	0	0	1	0	0	0	1
New Stark	0	0	0	0	0	0	0	0	0	0	0	0	0
Washington	14	13	6	19	22	12	7	21	19	18	23	19	193
Arcadia	3	3	0	1	0	0	1	0	2	1	0	1	12
Other	3	0	2	1	6	0	0	1	3	3	1	5	25
Total Citations	185	150	144	152	210	113	168	232	165	145	148	152	1964

Hancock County Sheriff's Office
2015 Statistics
Transport Warrant & Civil Unit

Category	Jan	Feb	Mar	Apr	May	Jun	Jul	Aug	Sep	Oct	Nov	Dec	Total
Transports													
Adult Escorts	93	63.25	87	87	70	69	79	84	90	84	88	113	1007.25
Adult Inst. Transports	11	19	15	15	20	9	14	14	20	14	8	16	175
Totl Adult Transports	21	26	27	24	25	17	19	25	32	20	17	18	271
Adult Transport Time	36.75	57.95	48.50	44.25	32.50	28.25	31.25	37.75	58.50	43.50	30.75	37.75	487.70
Mileage	1,226	1,546	2,262	2,028	1,528	1,041	1,373	1,613	2,301	1,654	1,280	1,492	19,344
Adult Transport Fees	\$ 2,986.00	\$ 3,568.00	\$ 5,041.00	\$ 3,578.00	\$ 3,359.00	\$ 2,175.00	\$ 2,899.00	\$ 3,995.00	\$ 4,542.00	\$ 2,542.00	\$ 3,377.00	\$ 2,018.00	\$ 40,080.00
Juvenile Transport Trips	15	9	11	6	6	8	15	19	16	19	14	7	145
# of Juveniles Transported	23.75	13.5	13	7	8	9	22	18.25	15.5	24	20	8.25	182.25
Juvenile Transport Time	85.50	14.00	13.00	9.50	9.25	16.75	26.75	25.50	28.00	28.75	22.25	8.75	288.00
Mileage	723	450	502	300	380	664	920	950	849	850	920	350	7,858
Juvenile Transport Fees	\$ 804.00	\$ 915.00	\$ 872.00	\$ 367.00	\$ 246.00	\$ 874.00	\$ 1,287.00	\$ 1,199.00	\$ 907.00	\$ 984.00		\$ 478.00	\$ 8,933.00
Probate Transports	1	0	0	0	1	0	0	0	0	2	0	0	4
Probate Transport time	3.50	0.00	0.00	0.00	0.00	0.00	0.00	0.00	0.00	8.25	0.00	0.00	11.75
Mileage	108	0	0	0	19	0	0	0	0	115	0	0	242
Probate Transport Fees	\$ -	\$ -	\$ -	\$ -	\$ -	\$ -	\$ -	\$ -	\$ -	\$ -	\$ -	\$ -	\$ -
Courthouse Security (Hours)													
HCPC	16.75	15.75	11.75	22.50	8.50	20.25	21.50	21.75	18.70	21.50	23.50	74.00	276.45
West Entrance	169.25	171.50	201.75	194.50	194.50	189.75	197.25	195.50	202.45	203.25	167.00	198.00	2,284.70
Adult Probation	0.00	0.00	0.00	0.00	0.00	0.00	0.00	0.00	0.00	0.00	0.00	0.00	0.00
BMV/ROC/SCEA	0.00	0.00	0.00	0.00	0.00	0.00	0.00	0.00	0.00	0.00	0.00	0.00	0.00
Juvenile Court	9.50	2.50	0.00	0.75	0.25	0.50	0.00	2.25	26.00	0.50	15.50	17.75	75.50
FMC	3.25	19.75	3.25	5.50	18.00	0.75	0.75	21.25	62.25	5.25	21.25	21.25	182.50
In House Court	1.25	2.00	1.00	2.00	0.50	0.25	0.25	0.00	0.00	2.50	0.00	0.00	9.75
Total Security Hours	200.00	211.50	217.75	225.25	221.75	211.50	219.75	240.75	309.40	233.00	227.25	311.00	2,828.90
West Entrance Traffic	6,551	6,582	6,048	6,238	6,350	5,254	6,922	5,917	5,572	6,667	4,555	6,475	73,131
Warrants													
Warrants Entered	80	69	81	102	86	107	109	100	75	107	86	113	1115
Warrants Served	86	68	80	67	55	58	90	62	67	65	54	75	827
Warrants Archived	128	99	111	87	91	90	115	77	91	100	72	96	1157
Warrant Fees	\$ 3,521.00	\$ 1,601.00	\$ 2,541.00	\$ 1,460.90	\$ 2,123.00	\$ 2,220.00	\$ 3,353.64	\$ 1,645.00	\$ 1,430.00	\$ 1,958.17	\$ 1,639.39	\$ 2,015.00	\$ 25,508.10
Unentered Warrants Recalled	9	8	7	7	27	7	8	19	7	22	5	24	150
Recalled Warrant Fees	\$ 700.00	\$ 540.00	\$ 557.90	\$ 260.00	\$ 620.00	\$ 620.00	\$ 500.00	\$ 277.00	\$ 360.00	\$ 640.00	\$ 240.00	\$ 341.00	\$ 5,655.90

**Hancock County Sheriff's Office
2015 Statistics
Transport Warrant & Civil Unit**

Category	Jan	Feb	Mar	Apr	May	Jun	Jul	Aug	Sep	Oct	Nov	Dec	Total
Sex Offender Registration													
Som Hours	6.8	9.5	21	27	11	8.3	8.8	32	24	20	16	11	195.4
Adult Registrations:													
Tier I	6	3	9	12	2	10	8	18	7	12	7	13	107
Tier II	5	5	3	5	8	7	7	9	5	8	6	10	78
Tier III	8	7	4	8	13	6	7	16	5	11	12	6	103
Juvenile Registrations:													
Tier I	0	0	0	0	1	0	0	0	0	0	0	0	1
Tier II	0	0	0	1	1	0	0	0	0	1	0	0	3
Tier III	0	0	1	0	0	1	0	0	1	0	0	1	4
Total SORN Registrations	19	15	17	26	25	24	22	43	18	32	25	30	296
Concealed Carry Permits													
CCW Hours	39.25	53.75	51	62.25	41.75	40.5	41.25	57	49.5	49.5	44.25	69.25	599.25
CCW Permits Issued	45	69	80	90	46	51	61	41.5	64	49	41	127	764.5
Arson Registry	2	0	0	0	0	1	0	0	0	0	0	0	3
Civilian Fingerprints													
Webcheck	5.75	7	2.75	4.5	4.75	8.25	11	14.5	3.25	5.75	4.75	7.75	80
Manual	1	6	9	3	1.2	1	2	6	3	0	1	5	38.2
Total Civilian Fingerprints	6.75	13	11.75	7.5	5.95	9.25	13	20.5	6.25	5.75	5.75	12.75	118.2
Juvenile Fingerprints	1	3	1	3	1	0	1	2	3	0	0	1	16
Extraditions													
# of Extraditions	0	1	1	2	0	2	2	0	1	0	0	1	10
Extradition Transport Time	0.00	22.25	5.00	5.00	0.00	13.50	25.00	0.00	1.50	0.00	0.00	2.00	74.25
Mileage	0	580	296	226	0	648	733	0	136	0	0	2399	5018
Extradition Fees	\$ -	\$ 854.00	\$ 316.00	\$ 942.00	\$ -	\$ 2,871.00	\$ 774.00	\$ -	\$ 156.00	\$ -	\$ -	\$ 2,419.00	\$ 8,332.00
Civil Process													
Sheriff's Sales Received	26	24	21	18	13	17	14	14	17	15	8	18	205
Appraisals	16	25	23	12	10	18	12	5	18	7	12	12	170
Sales Withdrawn	4	3	8	14	5	2	8	0	7	2	1	10	64
Sales Conducted	11	9	17	16	7	18	15	0	5	7	12	11	128
No Bidders	2	0	0	2	0	3	0	0	0	0	0	2	9
Chattel Sales	0	0	0	0	0	0	0	0	0	0	0	0	0
Execution Sales	0	0	0	0	0	0	0	0	0	0	0	0	0
Civil Papers Received	134	159	143	152	143	142	202	85	140	159	139	99	1697
Civil Papers Served	140	117	118	130	109	121	165	82	112	126	134	83	1437
CPO's Served	15	6	11	17	12	18	12	7	15	12	14	11	150

Hancock County Sheriff's Office
2015 Statistics
Corrections - Population

Category	Jan	Feb	Mar	Apr	May	Jun	Jul	Aug	Sep	Oct	Nov	Dec	Total
# of Prisoners Booked	223	190	213	182	168	190	219	189	209	200	189	184	2,356
# of Prisoners Released	201	190	206	184	189	187	191	208	205	197	188	193	2,339
Fed'l Contracted Prisoners Held	0	0	0	0	0	0	0	0	0	0	0	0	0
Contracted Prisoners Held (Excluding Findlay Police Dept.)	0	0	0	0	0	0	0	0	0	0	0	0	0
Highest Population	107	106	115	110	106	100	122	119	120	117	123	107	1,352
Lowest Population	83	95	96	98	81	84	77	90	99	83	84	82	1,052
Average Daily Population	97	102	106	104	95	91	98	105	112	99	104	99	101
# of days Exceeded (98) Population	17	23	28	28	9	1	15	25	31	14	23	18	232
Gender													
Male	170	146	154	130	120	139	151	129	150	139	129	132	1,689
Female	53	44	59	52	48	51	68	60	59	61	60	52	667
Total	223	190	213	182	168	190	219	189	209	200	189	184	2,356
Felons													
Male	53	43	42	41	25	40	40	31	46	51	33	32	477
Female	9	10	11	10	8	14	19	15	17	18	11	13	155
Total	62	53	53	51	33	54	59	46	63	69	44	45	632
Misdemeanors													
Male	114	96	107	85	91	94	107	95	96	84	89	96	1,154
Female	44	31	48	41	39	38	47	45	40	39	49	39	500
Total	158	127	155	126	130	132	154	140	136	123	138	135	1,654
Length of Stay													
Highest	170	138	30	30	20	365	206	13	150	10	30	34	
Lowest	3	3	3	3	3	3	2	3	2	3	3	3	
Average	11	15	5	5	2	19	50	2	12	0	3	4	
DW/OMVI	33	32	29	27	26	19	28	27	29	15	30	28	323
Highest	0	0	0	0	0	0	15	30	10	0	0	0	
Lowest	0	0	0	0	3	0	0	0	5	0	0	0	
Average	0	0	0	0	0	0	0	0	0	0	0	0	
DUS	1	1	3	2	4	2	2	2	5	3	3	0	28
Highest	9	30	50	17	0	45	20	0	65	10	0	0	
Lowest	2	3	15	4	10	2	0	7	20	9	3	0	
Average	0	4	2	1	0	3	0	0	3	0	0	0	
Domestic Violence	25	22	16	15	11	18	20	16	15	17	13	11	199
Age Groups													
Under 20	14	18	15	14	10	20	19	16	17	17	18	9	187
21 - 24	30	28	45	29	25	24	40	30	26	37	21	25	360

Hancock County Sheriff's Office
2015 Statistics
Corrections - Population

Category	Jan	Feb	Mar	Apr	May	Jun	Jul	Aug	Sep	Oct	Nov	Dec	Total
25 - 29	44	41	56	27	43	44	51	40	56	56	55	40	553
30 - 39	79	60	50	60	47	61	54	53	63	50	51	64	692
40 - Over	56	43	47	52	43	41	55	50	47	40	44	46	564

Race	Jan	Feb	Mar	Apr	May	Jun	Jul	Aug	Sep	Oct	Nov	Dec	Total
White	161	135	156	133	124	145	167	136	145	146	146	136	1,731
Black	37	35	42	37	32	34	32	30	36	34	30	31	410
Hispanic	21	19	14	11	12	11	15	21	26	19	12	16	197
Asian	3	1	1	0	0	0	3	1	0	1	0	0	10
American Indian	1	0	0	0	0	0	1	0	1	0	0	1	4
Other	0	0	0	1	0	0	1	1	1	0	0	0	4

Marital Status	Jan	Feb	Mar	Apr	May	Jun	Jul	Aug	Sep	Oct	Nov	Dec	Total
Married	38	37	32	29	27	33	32	25	34	39	45	35	406
Single	152	125	149	131	108	130	137	134	142	134	121	117	1,580
Divorced	29	25	31	21	32	26	48	29	33	26	20	31	351
Widowed	4	3	1	1	1	1	2	1	0	1	3	1	19

Offenses	Jan	Feb	Mar	Apr	May	Jun	Jul	Aug	Sep	Oct	Nov	Dec	Total
Violent	4	2	8	6	6	13	8	8	5	7	7	7	81
Property	25	14	12	7	7	13	14	15	14	14	14	18	167
Drug	33	22	34	44	34	36	46	31	39	47	30	32	428
Alcohol	44	45	44	39	37	40	36	42	40	24	40	45	476
Fines & Costs	0	0	0	0	0	0	0	0	0	0	0	0	0
Public Order Offenses	2	3	3	2	5	3	3	3	3	3	1	4	35
Traffic	54	41	61	46	35	53	58	51	54	42	52	46	593
Parole	3	4	4	1	2	3	4	4	7	3	2	1	38
Child Support	23	12	21	13	10	10	12	7	12	10	8	17	155
Miscellaneous	82	60	62	57	51	60	60	45	57	64	64	58	720

Total Number of Recidivisms	Jan	Feb	Mar	Apr	May	Jun	Jul	Aug	Sep	Oct	Nov	Dec	Total
1st Time	68	57	70	55	40	65	72	71	69	70	57	54	748
2 or 3 Times	43	48	51	47	43	40	50	34	51	43	47	42	539
4 or 5 Times	33	22	30	20	32	19	31	29	22	16	21	26	301
6 or 7 Times	22	15	22	15	10	20	15	18	23	29	23	11	223
8 or 9 Times	7	7	12	12	8	8	12	5	7	14	13	15	120
10 or More Times	50	41	28	33	35	38	39	32	37	28	27	37	425

Meal Service	Jan	Feb	Mar	Apr	May	Jun	Jul	Aug	Sep	Oct	Nov	Dec	Total
# of Prisoner Meals Served	7,994	8,344	8,349	7,955	7,955	9,231	7,776	8,649	10,835	8,005	8,640	9,556	103,289

Hancock County Sheriff's Office
2015 Statistics
Corrections - Program Participation

	Jan	Feb	Mar	Apr	May	Jun	Jul	Aug	Sep	Oct	Nov	Dec	Total
Mental Health													
CBT - Male	0	33	35	28	37	45	52	42	41	65	45	48	471
CBT - Female	0	15	25	35	24	36	36	38	41	55	21	13	339
Emotions Management	0	0	0	0	0	0	0	0	0	0	0	0	0
# Referred for One on One Counseling	121	136	134	146	129	152	123	126	124	119	117	125	1,552
Off-Site Mental Health Counseling	0	0	0	0	0	1	0	0	0	0	0	0	1

General													
Alcoholics Anonymous	67	55	49	53	40	62	61	97	82	85	59	42	752
GED	11	6	8	10	17	12	15	12	9	10	11	1	122
Literacy (Read for Life)	0	0	4	3	3	5	4	5	2	10	2	0	38
OT Program (Male)	48	32	61	0	37	25	83	68	32	84	67	45	582
OT Program (Female)	0	0	0	0	0	0	0	4	4	4	2	1	15
Dad's Coaching Clinic	0	0	0	5	22	14	10	17	25	25	22	13	153
Art Program	0	0	0	0	0	0	0	0	0	0	0	0	0
Domestic Violence Class (Male)	18	14	17	25	15	18	24	11	13	0	0	0	155
Domestic Violence Class (Female)	18	5	6	23	14	11	14	12	26	12	0	0	141
Getting Ahead (Male)	0	2	9	4	3	7	0	1	4	0	1	0	31
Getting Ahead (Female)	0	0	1	2	1	0	0	4	8	5	0	0	21
Male NA	0	0	0	1	0	0	8	10	8	6	5	4	42
Female NA	0	0	0	3	3	2	6	7	8	5	7	6	47

Library													
Number of Visits	232	260	292	339	310	336	258	283	398	275	279	246	3,508
Number of Books Issued	348	542	438	427	439	519	409	350	604	480	408	394	5,358
Number of Bibles Issued	13	31	28	22	19	50	30	15	23	26	16	14	287

Religious													
Bible Study (Males)	31	29	32	22	23	12	9	18	21	22	20	16	255
Bible Study (Females)	23	20	31	31	16	18	13	34	35	24	18	2	265
Protestant Church Services	53	61	55	71	64	76	30	89	71	65	65	48	748
Catholic Church Services	0	0	0	0	0	0	0	0	0	0	0	0	0
Female Catholic Visits	0	7	0	8	3	9	8	0	18	12	7	2	74

Hancock County Sheriff's Office
2015 Statistics
Corrections - Program Participation

	Jan	Feb	Mar	Apr	May	Jun	Jul	Aug	Sep	Oct	Nov	Dec	Total
Medical													
Receiving Screens	181	173	211	186	153	180	203	176	148	187	177	184	2,159
Medical Requests	92	91	144	131	106	104	129	94	76	84	174	157	1,382
Phone Calls to Doctor	7	6	10	5	4	4	4	3	2	3	6	13	67
Office Transports (TW)	10	12	9	14	12	13	9	12	9	7	5	9	121
Prison / Jail Transports	7	8	20	13	11	12	11	15	14	10	17	6	144
# Seen by Facility Doctor	67	86	88	61	70	43	52	38	65	47	56	40	713
# Seen by Facility Nurse	66	70	69	113	81	56	102	75	65	79	169	333	1,278
# Seen by Officer	79	68	68	112	83	63	96	84	53	56	x	x	762
Responded to Accidents	4	2	3	1	1	0	3	2	1	1	6	3	27
Number of TB Tests	45	12	36	53	37	43	29	44	3	21	53	51	427
TB Tested Positive	0	0	0	0	0	0	0	0	0	0	0	0	0
Daily Count Diabetics	43	81	51	90	39	13	23	11	12	13	1	18	395
Number of Lab Tests	0	2	3	1	1	0	2	0	0	0	2	12	23
Mental Health Requests	72	67	101	109	110	88	90	84	69	104	94	107	1,095
Prescreener Called	13	4	7	5	8	11	6	9	5	8	2	3	81
# of Prescriptions Filled	0	0	0	0	0	0	0	0	0	3	0	35	38
# of Psychotropic Prescriptions Filled	0	0	0	0	0	0	0	0	0	8	0	310	318
Avg# Inmates Receiving Psychotropic Meds	22	22	24	25	22	24	25	22	20	30	28	37	301
# Inmates on Special Diets	51	65	64	155	75	37	51	48	68	52	27	38	731
# Off-Site Long Term Mental Health Trtmt	0	0	0	3	0	0	0	0	1	2	0	0	6
(Northcoast Behavioral Center - Toledo)													
# Off-Site Medical Care	4	6	5	5	8	9	8	4	3	2	13	5	72
(ER, Doctor's Office, Dentist)													

	Jan	Feb	Mar	Apr	May	Jun	Jul	Aug	Sep	Oct	Nov	Dec	Total
Inmate Worker Program													
# of Male Prisoners	22	29	33	17	21	16	19	33	20	21	29	23	283
# of Female Prisoners	10	11	13	16	21	19	12	16	12	13	22	14	179
# of Outside Work Details	0	0	0	2	4	3	0	3	2	2	1	0	17
# of Car Washes/Waxes Completed	13	16	34	23	34	11	23	36	20	21	15	15	261

**Hancock County Sheriff's Office
2015 Statistics
Miscellaneous Administrative Statistics**

Category	Jan	Feb	Mar	Apr	May	Jun	Jul	Aug	Sep	Oct	Nov	Dec	Total
Records													
Reports Processed	361	363	340	289	329	393	416	247	349	357	275	401	4,120
Public Record Requests	120	88	95	94	54	83	90	86	77	146	72	84	1,089
Local Background Checks	30	33	36	49	18	38	31	36	24	54	50	34	433
General Fund Expenditures													
General Office	\$ 88,040.10	\$ 48,001.74	\$ 36,246.70	\$ 38,534.10	\$ 32,003.01	\$ 36,345.09	\$ 45,550.72	\$ 38,390.77	\$ 39,612.34	\$ 44,868.96	\$ 31,433.82	\$ 42,019.02	\$ 521,046.37
Enforcement	\$ 372,698.76	\$ 215,668.83	\$ 213,930.46	\$ 244,624.12	\$ 210,368.88	\$ 214,690.17	\$ 307,628.17	\$ 220,578.42	\$ 232,533.15	\$ 210,932.26	\$ 218,698.36	\$ 297,583.44	\$ 2,959,935.02
Transport Warrant	\$ 38,888.17	\$ 29,733.71	\$ 32,543.29	\$ 37,786.77	\$ 32,959.85	\$ 32,768.74	\$ 50,593.84	\$ 34,544.62	\$ 34,273.36	\$ 35,289.47	\$ 35,085.08	\$ 49,541.19	\$ 444,008.09
Total Enforcement	\$ 499,627.03	\$ 293,404.28	\$ 282,720.45	\$ 320,944.99	\$ 275,331.74	\$ 283,804.00	\$ 403,772.73	\$ 293,513.81	\$ 306,418.85	\$ 291,090.69	\$ 285,217.26	\$ 389,143.65	\$ 3,924,989.48
Corrections	\$ 355,898.64	\$ 234,504.38	\$ 241,287.52	\$ 265,091.80	\$ 230,099.26	\$ 227,227.45	\$ 357,909.47	\$ 242,315.75	\$ 245,190.94	\$ 251,790.36	\$ 280,624.36	\$ 333,698.53	\$ 3,265,638.46
ROC	\$ -	\$ -	\$ -	\$ -	\$ -	\$ -	\$ -	\$ -	\$ -	\$ -	\$ -	\$ -	\$ -
Total Gen'l Fund Expenditures	\$ 855,525.67	\$ 527,908.66	\$ 524,007.97	\$ 586,036.79	\$ 505,431.00	\$ 511,031.45	\$ 761,682.20	\$ 535,829.56	\$ 551,609.79	\$ 542,881.05	\$ 565,841.62	\$ 722,842.18	\$ 7,190,627.94
General Fund Receipts													
Fees & Fines Collected	\$ 11,393.15	\$ 7,001.67	\$ 9,676.77	\$ 8,298.51	\$ 12,265.20	\$ 6,171.72	\$ 9,845.72	\$ 10,929.26	\$ 7,030.57	\$ 11,053.41	\$ 8,469.26	\$ 9,564.99	\$ 111,700.23
Security Contracts - General Fund	\$ 3,131.52	\$ 6,022.85	\$ 5,086.07	\$ 2,345.35	\$ 3,413.11	\$ 3,704.59	\$ 940.25	\$ 7,192.91	\$ 300.88	\$ 6,798.01	\$ -	\$ 6,685.18	\$ 45,620.72
Prisoner Housing	\$ -	\$ 58,161.06	\$ 139,192.51	\$ 85,151.93	\$ -	\$ 143,108.99	\$ 55.00	\$ 57,294.03	\$ 131,907.59	\$ 110.00	\$ 61,353.74	\$ 117,888.98	\$ 794,223.83
Resident Housing	\$ 25.00	\$ 25.00	\$ 25.00	\$ 25.00	\$ 25.00	\$ 25.00	\$ 25.00	\$ -	\$ -	\$ -	\$ -	\$ -	\$ 175.00
Other	\$ 18,691.29	\$ 1,226.35	\$ 25,299.98	\$ 3,549.28	\$ 4,431.18	\$ 6,451.67	\$ 3,442.83	\$ 3,035.84	\$ 8,118.18	\$ 3,606.07	\$ 1,522.75	\$ 11,656.33	\$ 91,031.75
Total to General Fund	\$ 33,240.96	\$ 72,436.93	\$ 179,280.33	\$ 99,370.07	\$ 20,134.49	\$ 159,461.97	\$ 14,308.80	\$ 78,452.04	\$ 147,357.22	\$ 21,567.49	\$ 71,345.75	\$ 145,795.48	\$ 1,042,751.53
Grant Funds Received	\$ -	\$ 11,118.35	\$ 9,840.58	\$ 7,808.74	\$ 2,692.50	\$ -	\$ -	\$ 6,014.73	\$ 1,172.19	\$ 41,978.51	\$ -	\$ 9,727.58	\$ 90,353.18
Security Contracts - Special Fund	\$ 5,912.00	\$ 25,026.00	\$ 12,563.00	\$ 24,392.60	\$ 6,017.60	\$ 7,522.00	\$ 25,897.00	\$ 6,017.60	\$ 6,017.60	\$ 25,897.00	\$ 6,017.60	\$ -	\$ 151,280.00
Special Fund Receipts	\$ 15,099.63	\$ 11,931.83	\$ 19,503.24	\$ 15,751.23	\$ 12,105.51	\$ 11,951.03	\$ 13,318.21	\$ 12,407.39	\$ 13,986.21	\$ 12,008.70	\$ 11,197.74	\$ 17,886.64	\$ 167,147.36
Receipts	\$ 54,252.59	\$ 120,513.11	\$ 221,187.15	\$ 147,322.64	\$ 40,950.10	\$ 178,935.00	\$ 53,524.01	\$ 102,891.76	\$ 168,533.22	\$ 101,451.70	\$ 88,561.09	\$ 173,409.70	\$ 1,451,532.07