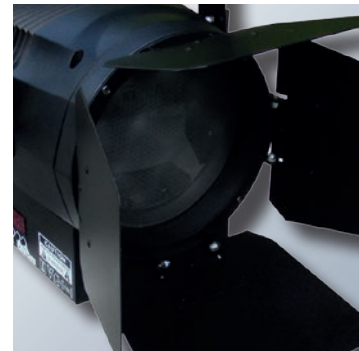


Professional LED Stage Lighting



PAR CANS

SPOT LIGHTS

PROFILE SPOTS

MOVING HEADS

0808 129 4131
www.amtmedia.co.uk





LED Stage Lighting from AMT Media Ltd

LED stage lighting has come of age over the last few years. The latest series of specialist LED fixtures punch out enough light for virtually any large stage venue, including schools, theatres, broadcast studios, places of worship, clubs and hospitality venues. Advances in LED design, lens manufacture and power supply technologies have resulted in a range of high quality LED fixtures suitable for any lighting scenario.

New Installations

The vast majority of new stage lighting installations will be LED based systems. No need for expensive 32/63A power supplies, no cumbersome dimmer packs, no excess heat generated by the lamps, no need for coloured filters and no blown lamps. Add to that the low cost of ownership (ultra-low power consumption and no lamps to replace) and the decision is easy - it's LEDs every time!

Retrofit and Upgraded Installations

We are frequently asked whether LED lighting fixtures can be retrofitted to an older conventional dimmer-pack based system. The user may have a considerable number of conventional lanterns - tungsten, halogen or HMI and the cost of replacing them en-masse may be prohibitive. There is also the question of compatibility - LEDs cannot be used on a conventional lighting bar connected to a dimmer pack. Fortunately we have considerable experience in this area and we are able to provide advice and solutions to enable existing lights and LED lights to be installed and operated seamlessly side-by-side.

Most users discover, however, that they need fewer LED fixtures than they think. Conventional lanterns can only ever display one colour - white or a fixed colour using coloured filter gels. An LED, on the

other hand can display an almost infinite range of colours, making it a far more versatile light source. Add in a motorised zoom facility and/or a moving head and you'll quickly appreciate why LEDs are displacing conventional lanterns in every area of stage lighting.

Compatibility & Colour Temperature

The other concern we frequently encounter is the 'quality' of the light output by LED fixtures. It is entirely true that early generations of LEDs output a distinctly blue form of white light which can be too harsh, especially for operators used to the warmer tones produced by conventional tungsten lanterns. The latest series of LEDs, however, can be ordered as 'cool' or 'warm', indicating the colour temperature of the light. A warm light is far softer and echoes the output from a conventional tungsten light, whereas a cool light is more akin to daylight and provides more punch, which may be advantageous in some circumstances.

Quality and Longevity

We would be remiss in not mentioning the issue of build quality and longevity. LED fixtures come in GOOD, BAD and UGLY! A GOOD fixture will perform well throughout its life, while a BAD fixture will perform badly from day one and likely fail prematurely. The output from any light source tails off as it ages, but a poor quality LED will tail off very rapidly, assuming it lasts that long.

All of our LED fixtures come with a 3 year warranty and an estimated 50,000 to 100,000 hour operating life, so you know you are buying a quality product, designed and built to last.



Par Cans

Perfect for general or wash lighting. Fixed beam angle or zoom option available.



3 year
warranty



3 year
warranty

Multipar Hex 18 x 15W LED Wash Fixture

Model: Hex-Multipar-18x15

- :: Led Source: High output 18 x 15W RGBWA-UV LED
- :: Power: High brightness 6-in-1 LEDs, fan cooled
- :: Lifespan: >50000 hours
- :: Features: Independent control of red, green, blue, white, amber & UV, colour change & auto modes, sound to light, strobe & master/slave
- :: Control: 6, 7 or 10 DMX channels
- :: Body: Aluminium, IP20 protection rating
- :: Bracket: Twin yoke assembly for bar mounting or floor standing
- :: Operating temperature: -20 to 40°C
- :: Dimensions: 390 x 260 x 260mm
- :: Nett Weight: 4.5Kg

Multipar Quad 18 x 10W LED Zoom Wash Fixture

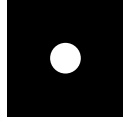
Model: Quad-Multipar-Z-18x10

- :: Led Source: High output 18 x 10W RGBW LED
- :: Power: High brightness 4-in-1 LEDs, fan cooled
- :: Lifespan: >50000 hours
- :: Features: Independent control of red, green, blue, white, zoom, colour change & auto modes, sound to light, strobe & master/slave
- :: Motorised Zoom: 10-60°, operated from the control desk
- :: Control: 5, 6 or 9 DMX channels
- :: Body: Aluminium, IP20 protection rating
- :: Bracket: Twin yoke assembly for bar mounting or floor standing
- :: Operating temperature: -20 to 40°C
- :: Dimensions: 390 x 260 x 260mm
- :: Nett Weight: 5Kg



Spot Lighting - Zoom/Fresnel

Ideal for area spotlighting, where clear edge definition is not required.



Ideal replacement for a 575W conventional lantern

3 year warranty



Ideal replacement for a 575W conventional lantern

3 year warranty

Pro Zoom High Output 7x20W White LED Fixture

Model: W-Z-7x20

- :: Led Source: 7x20W White COB LED 6500K (3200K option available)
- :: Power: High brightness, CRI >85
- :: Lifespan: >100000 hours
- :: Features: Continuous variable light intensity, high refresh rate suitable for TV studio use
- :: Control: 3 DMX channels, 4 selectable dimming curves
- :: Optical: 1800 Lux @ 5m with high-efficiency optical system
- :: Motorised Zoom: 28-70°, operated from the control desk
- :: Body: Aluminium, IP20 protection rating
- :: Operating temperature: -20 to 40°C
- :: Dimensions: 340 x 316 x 256mm
- :: Nett Weight: 8Kg

Pro Zoom High Output 7x20W RGB LED Fixture

Model: RGB-Z-7x20

- :: Led Source: 7x20W RGB COB LED
- :: Power: High brightness
- :: Lifespan: >100000 hours
- :: Features: Continuous variable light intensity, high refresh rate suitable for TV studio use
- :: Control: 9 DMX channels, 4 selectable dimming curves
- :: Optical: 1800 Lux @ 5m with high-efficiency optical system
- :: Motorised Zoom: 28-70°, operated from the control desk
- :: Body: Aluminium, IP20 protection rating
- :: Operating temperature: -20 to 40°C
- :: Dimensions: 340 x 316 x 256mm
- :: Nett Weight: 8Kg



Profile Spotlighting - Fixed Beam

LED Profiles with clear edge definition for spotlighting and gobos.



Professional High Output Profile Spot 200/300W White LED Fixture

Model: W-Profile-200

Model: W-Profile-300

- :: Led Source: 1x200W/300W White COB LED 3200K (6500K option available)
- :: Power: High brightness, CRI >85
- :: Lifespan: >100000 hours
- :: Features: Continuous variable light intensity
- :: Control: 3 DMX channels, 4 selectable dimming curves
- :: Optical: 5200/7650 Lux @ 4m. Beam angle 19° (10, 26, 36 and 50° optional lenses available). High-efficiency optical system
- :: Operating temperature: -20 to 40°C
- :: Body: Aluminium, IP20 protection rating
- :: Dimensions: 580 x 280 x 210mm
- :: Nett Weight: 8.1Kg

Professional High Output Profile Spot 180W RGBW LED Fixture

Model: RGBW-Profile-180

- :: Led Source: 1x180W RGBW COB LED
- :: Power: High brightness
- :: Lifespan: >100000 hours
- :: Features: Continuous variable light intensity
- :: Control: 9 DMX channels, 4 selectable dimming curves
- :: Optical: 6740 Lux @ 4m. Beam angle 19° (10, 26, 36 and 50° optional lenses available). High-efficiency optical system
- :: Options: Gobo holder, rotating gobo holder, manual iris
- :: Body: Aluminium, IP20 protection rating
- :: Operating temperature: -20 to 40°C
- :: Dimensions: 580 x 280 x 210mm
- :: Nett Weight: 8.1Kg



Profile Spotlighting - Adjustable Beam

LED Zoom Profiles (17-50°) with clear edge definition for spotlighting and gobos.



Professional High Output Profile Zoom 200/300W White LED Fixture

Model: W-Z-Profile-200

Model: W-Z-Profile-300

- :: Led Source: 1x200W/300W White COB LED 3200K (6500K option available)
- :: Power: High brightness, CRI >85
- :: Lifespan: >100000 hours
- :: Features: Continuous variable light intensity
- :: Control: 3 DMX channels, 4 selectable dimming curves
- :: Optical: 5150/7600 Lux @ 4m (17° beam) with high-efficiency optical system
- :: Manual Zoom: 17-50°
- :: Options: Gobo holder, rotating gobo holder, manual iris
- :: Body: Aluminium, IP20 protection rating
- :: Operating temperature: -20 to 40°C
- :: Dimensions: 650 x 250 x 220mm

Professional High Output Profile Zoom 180W/200W RGBW LED Fixture

Model: W-Z-Profile-180

Model: W-Z-Profile-200

- :: Led Source: 1x180W/200W RGBW COB LED
- :: Power: High brightness
- :: Lifespan: >100000 hours
- :: Features: Continuous variable light intensity
- :: Control: 9 DMX channels, 4 selectable dimming curves
- :: Optical: 5000/5450 Lux @ 4m (17° beam) with high efficiency optical system
- :: Manual Zoom: 17-50°
- :: Options: Gobo holder, rotating gobo holder, manual iris
- :: Body: Aluminium, IP20 protection rating
- :: Operating temperature: -20 to 40°C
- :: Dimensions: 650 x 250 x 220mm



Moving Head Lights

Versatile high power LED Moving Head Lights with optional zoom facility.



3 year warranty



3 year warranty

High Power RGBW Moving Head Fixture

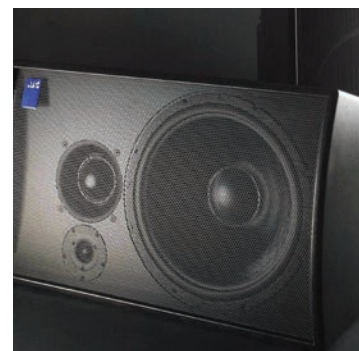
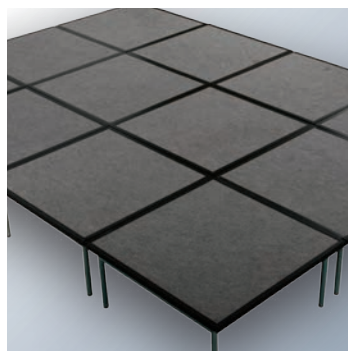
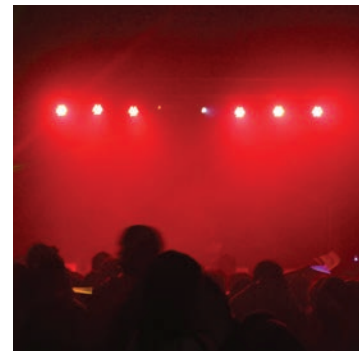
Model: RGBW-MH-12x10

- :: Led Source: 12 x 10W Cree 4 in 1 (RGBW) series LED
- :: Lifespan: >100000 hours
- :: Positioning system: Double optical coupler, dual positioning
- :: Control: 15 channels
- :: Moving Head Pan/Tilt: X540/Y270°, adjustable speed
- :: Dimmer: 0-100% linear dimming
- :: Display: LCD display
- :: Operating temperature: -20 to 40°C
- :: Body: Aluminium, IP20 protection rating
- :: Dimensions: 330 x 240 x 340mm
- :: Nett Weight: 6.8Kg

High Power RGBW Moving Head Zoom Fixture

Model: RGBW-Z-MH-19x15

- :: Led Source: 19 x 15W Osram 4 in 1 (RGBW) series LED
- :: Lifespan: >100000 hours
- :: Zoom: 8-60°
- :: Positioning system: Double optical coupler, dual positioning
- :: Control: 11/15 channels
- :: Moving Head Pan/Tilt: X630/Y240°, adjustable speed
- :: Dimmer: 0-100% linear dimming
- :: Strobe: 1-25/sec
- :: Display: LCD display
- :: Operating temperature: -20 to 40°C
- :: Body: Aluminium, IP20 protection rating
- :: Dimensions: 185 x 310 x 400mm
- :: Nett Weight: 9.3Kg



DID YOU KNOW WE ALSO SUPPLY...

MODULAR STAGING
STAGE CURTAINS
AUDIO SOLUTIONS
BIG SCREEN PROJECTION
ACOUSTIC PANELS

HEARING INDUCTION LOOP SYSTEMS
HIRE AND EVENTS
LIVE VIDEO STREAMING
INSTALLATION, MAINTENANCE & REPAIRS
ELECTRICAL INSTALLATIONS

For more information please contact:



AMT Media Ltd
Waterloo House, Longbridge Street,
Newtown, SY16 2BJ

Freephone 0808 129 4131 | Fax 01686 650170
Email: info@amtmedia.co.uk | Web: www.amtmedia.co.uk