

New Paths Music

The fourth New Paths
Spring Festival



4th - 7th April 2019

Beverley, East Riding of Yorkshire

www.newpathsmusic.com

Artistic Director: Libby Burgess • Founder: Roland Deller

Registered charity number 1176545

Welcome

Welcome to our 2019 New Paths festival programme! It is hard to believe this is already our fourth spring festival, and we are proud of the national recognition that New Paths has earned in that short time.

Beverley is the perfect town for a festival – big enough to have a lot in it, compact enough to be practical – and oozing character and charm. With its multi-layered history, beautiful architecture, real market, glorious venues, and marvellous array of pubs, eateries and independent shops, it's the sort of place that people stumble across once and love forever.

Ultimately, though, it is the people who make a festival. From our very first year, our audience has been incredibly warm and loyal; and amongst our artists we are privileged to have assembled a truly world-class team of singers and players, who love coming to this wonderful, and slightly off-the-beaten-track, corner of the UK. The result is an incredible few days of music-making, and of friendship, and a real buzz.

Beverley and its people are a constant source of inspiration to us in programming the festival and it is a joy to celebrate the town we are proud to call home throughout the festival and in this brochure.

We hope you enjoy browsing it, and encourage you to book your tickets early. Do take note of our new ticketing arrangements this year (see page 25).

We can't wait to see you in April.

Look out for...



Schubert Odyssey

A rare opportunity to hear in a few days all three of the great song cycles by Schubert, as well as his beloved Trout Quintet.

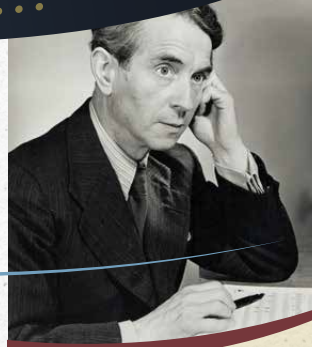
Join singers Nicholas Mulroy, Marcus Farnsworth and Jonathan Lemalu, and Artistic Director Libby Burgess, on this epic journey. Not to be missed.



Journeys and homes

Inspired by the Schubert cycles, a broader theme of journeying, homes and displacement runs through the festival, from Ireland's Songs of a Wayfarer to Messiaen's iconic Quartet for the End of Time.

A highlight is sure to be the performance of Howard Skempton's atmospheric setting of The Rime of the Ancient Mariner.



Homage to Howells

With generous support from the Herbert Howells Trust we are exploring the stunning output of this unduly neglected English composer.

Best known for his choral works, this is a chance instead to hear his ethereal and distinctive chamber music.



Five a Day

A quintet a day – from Finzi and Howells to Vaughan Williams and Schubert.

The latter two make wonderful use of the double bass, and we're honoured to welcome John Tattersdill, for 42 years section principal of CBSO.



Female composers

We continue to explore the work of women composers, celebrating Clara Schumann in her 200th anniversary year, and also profiling Rebecca Clarke.

Other female composers featured range from Ethel Smyth, Fanny Mendelssohn and the Boulanger sisters to Hildegard of Bingen!



New Music

New Paths continues its pattern of annually commissioning a new work from a leading composer.

Stephen McNeff's new oboe and piano work The Pilgrim Rabbit Walks the Westwood is inspired by Beverley and is premiered on Friday 5th April.



Musical friendships

Our name is based on the musical friendship of Brahms and Schumann, and we continue to programme music reflecting composers' friendships.

We also welcome our own friends and are honoured to feature pianist Martin Roscoe, Co-Artistic Director with Libby Burgess of the Beverley Chamber Music Festival.



Children's events

Our watery theme is picked up in a family performance of The Wind in the Willows, John Rutter's charming musical setting of Kenneth Grahame's timeless story.



Moments to reflect

The festival this year falls in Lent, so we offer two free performances of reflective music: a chance to pray, meditate or just listen and be.

At a glance

Wednesday 3rd April

**Babies & Toddlers:
A Musical Voyage**
Toll Gavel
10:30am - 11:15am

Soirée
Secret location
8pm - 9:30pm

Festival
Warm-Up
Day

Thursday 4th April

Dawn Chorus
Toll Gavel
11am - 12:15pm

Lunch
ERT House Café
12:30pm - 1:15pm

**Perspectives
on Howells**
ERT
1:15pm - 2:15pm

Epilogue
Minster
2:30pm - 3pm

A Winter's Journey
Toll Gavel
4:30pm - 5:45pm

Supper
Carluccio's
6pm - 7pm

Inspirations
St Mary's
7:30pm - 9:30pm

Stabat Mater
St John's
10pm - 10:45pm

Friday 5th April

By the Waters
Toll Gavel
11am - 12:15pm

Meeting Franz
St Mary's Church Hall
2:30pm - 3:30pm

The Miller's Daughter
Toll Gavel
4:30pm - 5:30pm

Supper
Filmore & Union
6pm - 7pm

Notes from Afar
St Mary's
7:30pm - 9:30pm

The End of Time
Minster
10pm - 10:50pm

Saturday 6th April

**A Golden Era on
Prince Consort Road**
St Mary's
11am - 12:15pm

The Wind in the Willows
ERT
2pm - 3pm

The Trout
Toll Gavel
4:30pm - 5:15pm

Night at the Movies
ERT
8:30pm - 10pm

Sunday 7th April

Morning Worship
St Mary's
9:45am - 10:45am

Organ recital
Minster
12:30pm - 1:30pm

Sunday roast
Monk's Walk
1:30pm - 2:30pm

Eternal Source
St Mary's
3pm - 3:30pm

Swan Song
Toll Gavel
4:30pm - 5:30pm

Supper
Lucia's
6pm - 7pm

Clara's World
St Mary's
7:30pm - 9:45pm



The Artists



Aoife Miskelly
soprano



Rowan Pierce
soprano



Katie Bray
mezzo-soprano



Helen Charlston
mezzo-soprano



Cara Berridge
cello



Tim Lowe
cello



John Tattersdill
double bass



Ian Wilson
recorder



Robin Bailey
tenor



Nicholas Mulroy
tenor



Marcus Farnsworth
baritone



Edward Grint
bass-baritone



James Turnbull
oboe



John Slack
clarinet



Francesca Moore-Bridger
horn



Alex Caldton
trumpet



Jonathan Lemalu
bass



Alexandra Caldton
violin



Jamie Campbell
violin



Hannah Dawson
violin



Libby Burgess
piano



Martin Roscoe
piano



Ashley Grote
organ



Richard Pinel
organ



Eva Thorarinsdottir
violin



Lena Eckels
viola



Simon Tandree
viola



Jonathan Clinch
speaker



Richard Stokes
speaker



Stephen McNeff
composer



Babies & Toddlers: A Musical Voyage



Free event

Wednesday 3rd April / 10:30am - 11:15am
Free - register to be sure of a place (see p 27) / Toll Gavel United Church

Set sail with us on a joyful journey of musical discovery: meet an array of musical instruments and watch the world-class players up close.

The New Paths children's concerts have become a firm favourite in the Beverley calendar! Especially designed for pre-schoolers and their grown-ups, these concerts bring captivating and vivacious music to the youngest of audiences. Feeding, changing, singing and dancing all equally welcome!



Soirée



Wednesday 3rd April / 8pm - 9:30pm
Free - open only to Friends of New Paths / Secret location

New Paths is indebted to its Friends & Patrons, without whose generous support the festival would not happen, and this convivial evening party to thank them is sure to kick-start the festival in style. Guests will meet some of the festival artists and be entertained by them over drinks.

Details of this special event will be sent to Friends & Patrons directly. See p 28 for information on supporting New Paths.



Dawn Chorus



Thursday 4th April / 11am - 12:15pm
£9 / Toll Gavel United Church

Casals: Song of the Birds
Bingen: Columba Aspexit **Linde:** Music for a Bird
Haydn: Quartet in D major Op 64 No 5 ('The Lark')
 Songs by **Brahms & Moeran**

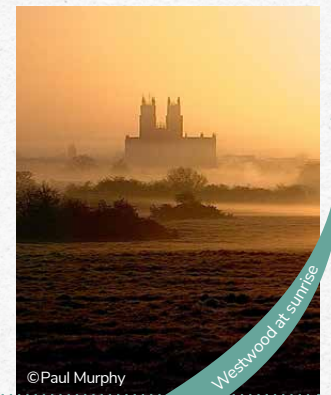
We open the festival with a springtime Dawn Chorus of birdsong in music. Recorder player Ian Wilson was a hit with last year's audience, and this programme features that melodious instrument in repertoire spanning over eight hundred years: Hildegard of Bingen's Columba Aspexit is one of the earliest known representations through word painting in music of bird movement, the descent of the dove beautifully depicted, whilst Hans Martin Linde's 1968 Music for a Bird explores an array of experimental sound effects to replicate birdsong.

Renowned baritone Marcus Farnsworth brings us poetic birds in the hands of our cornerstone composer Brahms, and joins our very own male-voice chorus of local singers in Moeran's rustic folksong settings. We conclude with Haydn's celebrated 'Lark' Quartet, so-called for the soaring, circling violin melody in the first movement: the work's elegant wit and charm provide a beautiful showcase for our exceptional string team.

Rowan Pierce – soprano, **Marcus Farnsworth** – baritone,
Jamie Campbell – violin, **Hannah Dawson** – violin,
Simon Tandree – viola, **Cara Berridge** – cello, **Ian Wilson** – recorder,
Libby Burgess – piano, **Richard Pinel** – organ



Ian Wilson



©Paul Murphy

Westwood at sunrise

Lunch



Thursday 4th April / 12:30pm - 1:15pm
Register to be sure of a place (see p 27) / ERT House Café

A sociable chance to meet like-minded festivalgoers whilst enjoying a light lunch in the East Riding Theatre's popular House Café. Reserve a place and pre-order from the chef's special menu.



Perspectives on Howells



Talk

Thursday 4th April / 1:15pm - 2:15pm
Free – just turn up / East Riding Theatre

Free event

Herbert Howells (1892-1983) was a great figure of twentieth-century English music, studying with Stanford at the RCM, subsequently teaching there himself for sixty years, and eventually buried at Westminster Abbey alongside Stanford and Vaughan Williams. Known particularly for his choral and organ music, this week we explore Howells' often-neglected but searingly beautiful chamber works.

Much of Howells' music is infused with a curiously English and deeply personal nostalgia. He was no stranger to personal tragedy, not only living through both world wars, but also poignantly losing his nine-year-old son Michael to polio in 1935.

British music specialist Jonathan Clinch recently completed Howells' unfinished Cello Concerto, and is currently writing a biography of Howells as well as editing a volume of the composer's unpublished piano music. This is a wonderful chance to hear Jonathan introduce this enigmatic figure, as well as the works we will hear this week.

Jonathan Clinch – speaker



Supported by
The Herbert
Howells Trust

Herbert Howells

Epilogue



Moment to Reflect

Thursday 4th April / 2:30pm - 3pm
Free – just turn up / Minster – South Transept

Free event

Howells: Oboe Sonata **Gurney:** Preludes

This year we are profiling the work of English composer Herbert Howells, across a number of events. His Sonata for Oboe and Piano is a hauntingly beautiful work, its soaring and almost vocal lines ideally suited to the generous acoustic of the Minster.

Although the piece was written during the Second World War, it was deemed too difficult, and was in fact not premiered until 1984; only now is the work earning its deserved place in the repertoire.

Gurney and Howells were close friends and students together at the RCM. These piano preludes by Gurney are one hundred years old this year, a reflection on his own grim experience in the First World War. Performed beside the war memorial chapels of Beverley's beautiful Minster, this free pop-up event forms the first of our 'moments to reflect' during the festival.

James Turnbull – oboe, **Libby Burgess** – piano



Supported by
The Herbert
Howells Trust

James Turnbull



A Winter's Journey



Schubert
Odyssey

Thursday 4th April / 4:30pm - 5:45pm
£7 / Toll Gavel United Church

Schubert: Winterreise

Our Schubert Odyssey begins with Winterreise, that epic tale of lost love and despair. Our protagonist has been rejected by his beloved, and sets out on a brutally icy and lonely journey, with only the snow, the bare trees and the occasional crow to keep him company. A gradual descent into madness ensues, depicted in some of Schubert's most devastatingly beautiful music. Schubert himself was dying when he wrote this bleak and powerful cycle, described by Ian Bostridge as 'an indispensable work of art that should be as much a part of our common experience as the poetry of Shakespeare and Dante, the paintings of Van Gogh and Picasso, the novels of the Brontë sisters or Marcel Proust.'

An established song duo of ten years' standing, Marcus and Libby return to the Beverley stage after their memorable Dichterliebe in our very first festival.

Marcus Farnsworth – baritone, **Libby Burgess** – piano



Marcus Farnsworth

Schubert Odyssey

Schubert was the first great exponent of the song cycle: this uniquely intimate connection between language and music has provided some of the most powerfully moving music ever written.

Over the course of the festival we explore Schubert's three epic song cycles – **Die schöne Müllerin**, **Winterreise** and **Schwanengesang** – each exploring journeys and loneliness, love and loss.

In **Marcus Farnsworth**, **Nicholas Mulroy** and **Jonathan Lemalu** we have three exceptional song singers, joining Artistic Director **Libby Burgess** at the piano.

Our fourth Schubert performance features the **Trout Quintet**, which – in contrast to the bleak beauty and terrifying drama of the song cycles – sees Schubert at his radiant sunniest.

We are honoured to welcome **Richard Stokes**, a world authority on the topic of Lieder, to introduce us to the music we will hear.



Join us at 4:30pm every day for our Schubert performances.
A Schubert pass is available to buy for £25 and represents superb value (see p 25)

Supper



Thursday 4th April / 6pm - 7pm

Register to be sure of a place (see p 27) / Carluccio's

Conveniently situated on Saturday Market, the local branch of Carluccio's is a favourite with Beverlonians. Choose from the entire chain menu, compare notes on the day's music with other audience members, and be confident of getting to the next event on time!

Inspirations



Thursday 4th April / 7:30pm - 9:30pm
£13 / St Mary's Church

Ravel: String Quartet **N Boulanger:** Trois Pièces
L Boulanger: Songs **Poulenc:** Deux poèmes de Louis Aragon
Berkeley: Introduction & Allegro **Vaughan Williams:** Piano Quintet

In this the 25th anniversary year of the opening of the Channel Tunnel, we explore two sets of Anglo-French teacher-student inspirations, as well as the connections between two extraordinary sisters. Vaughan Williams spent three months studying with Ravel (in fact three months his junior), looking to explore a more luminescent, less Anglo-Teutonic style of composition, and their enduring friendship enriched both their lives and their music. Tonight Ravel's effervescent string quartet is partnered with Vaughan Williams' little-known but wonderful piano quintet, not known to have been performed between 1918 and 1999.

The latter features double bass, which we spotlight in Lennox Berkeley's Introduction & Allegro, performed by the esteemed bassist John Tattersdill, who was for 42 years principal double bass at the CBSO. Berkeley too turned to France for fresh musical inspiration, studying with Nadia Boulanger in Paris, and so we hear her poetic Trois Pièces for cello alongside songs of sensuous beauty by her sister Lili.

Rowan Pierce – soprano, **Jamie Campbell** – violin,
Hannah Dawson – violin, **Eva Thorarinsdottir** – violin,
Lena Eckels – viola, **Simon Tandree** – viola, **Cara Berridge** – cello,
Tim Lowe – cello, **John Tattersdill** – double bass,
Libby Burgess – piano, **Martin Roscoe** – piano



The North Bar

The North Bar is the only remaining bar of those which formerly guarded the main entrances to the town.

Built in 1409, the North Bar is considered to be the best surviving example in England of a brick-built town gate.

It stands between North Bar Within (the heart of Beverley's handsome Georgian quarter) and North Bar Without (a tree-lined boulevard boasting some very grand houses).



© beverley photography

Late Night: Stabat Mater



Thursday 4th April / 10pm - 10:45pm

£5 / St John of Beverley Roman Catholic Church

Pergolesi: Stabat Mater

For the first time this year New Paths falls in the season of Lent, which we mark with this performance of Pergolesi's Stabat Mater – portraying the suffering of Jesus' mother during his crucifixion. Pergolesi's fame during his lifetime was in no small part brought about by his operatic writing, and this sense of drama and character is developed here in his sacred writing.

Helen Charlston won First Prize in the 2018 Handel Singing Competition whilst Rowan Pierce won First Prize at the inaugural Grange Festival International Singing Competition; both are currently Rising Stars of the Orchestra of the Age of Enlightenment, and tonight they join our festival string players for a performance of this intensely expressive and much-loved baroque work, in the intimate reflective surroundings of St John of Beverley Roman Catholic Church.

This venue has limited space – be sure to book in good time.

Rowan Pierce – soprano, **Helen Charlston** – mezzo-soprano,
Alexandra Caldon – violin, **Jamie Campbell** – violin,
Lena Eckels – viola, **Cara Berridge** – cello,
John Tattersdill – double bass, **Richard Pinel** – organ



Ticket information on page 25

By the Waters



Coffee concert

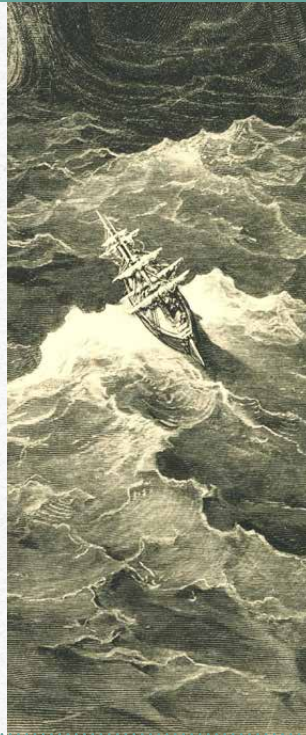
Friday 5th April / 11am - 12:15pm
£9 / Toll Gavel United Church

Brahms: Sonata in G Skempton: The Rime of the Ancient Mariner Songs by Smyth, Nystrom & Rachmaninoff

The 'driving force of all nature' (da Vinci), water, has inspired composers through the ages. Over the years we are surveying the works of Brahms; the first of his sonatas for violin and piano is known as the 'Rain Sonata' for its quotation of his own song Regenlied. Full of radiant spring freshness, its gloriously lyrical melodies and rhythmic energy contrast with the more contemplative final movement – recalling the long-lost days of youth, as triggered by the patter of rain on the window. Our 2018 audience took violinist Eva Thorarinsdottir to their hearts; we are delighted to welcome her back as she joins Martin Roscoe for this celebrated work.

Rime of the Ancient Mariner tells of the misfortunes of a seaman who shoots an albatross, spelling disaster for his ship and fellow sailors. Howard Skempton's extraordinarily atmospheric setting (2015) for baritone and chamber ensemble of Samuel Taylor Coleridge's iconic poem is described by the Times as 'deceptively simple... hypnotically effective... marvellously evocative.' We are thrilled to welcome Marcus Farnsworth to perform this exceptional contemporary work.

Marcus Farnsworth – baritone, **Alexandra Caldon** – violin, **Hannah Dawson** – violin, **Eva Thorarinsdottir** – violin, **Simon Tandree** – viola, **Cara Berridge** – cello, **John Tattersdill** – double bass, **Francesca Moore-Bridger** – horn, **Richard Pinel** – piano, **Martin Roscoe** – piano



© beverley photography

Beverley Beck

This short canal runs for just under a mile from Grovehill Lock on the River Hull into the town of Beverley.

Once a flourishing shipyard with a reputation for building quality trawlers and minesweepers, today the Beck is a pleasant place from which to explore the countryside of Figham Common or to take a boat trip on one of the Beverley Barge Preservation Society's vessels.

It affords stunning views of the east end of the Minster and is popular with runners and anglers alike. The 2018 New Paths festival featured an event aboard the Syntan barge.

Meeting Franz



Talk

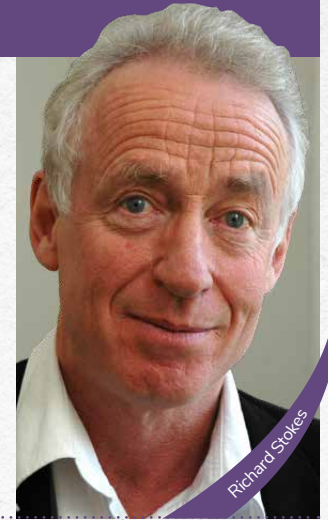
Friday 5th April / 2:30pm - 3:30pm
Free – just turn up / St Mary's Church Hall

Free event

Franz Schubert (1797-1828) is widely considered to be the father of Lieder: he wrote over 600 songs, deploying his stunning gift for melody, and using the piano accompaniment to vivid pictorial effect unlike any of his predecessors. He was also the first to write large-scale narrative song cycles, of which we hear all three over the course of the festival. Each explores themes of love and loss, from the burned optimism of Die schöne Müllerin's young lad, to the embittered Winterreise protagonist or the terrifying drama of Schwanengesang's posthumously-published songs.

Richard Stokes is a world authority on Lieder. Professor of Lieder at the Royal Academy of Music, a regular juror at international Song Competitions, and with numerous books of song translations to his name, this is a wonderful opportunity to be introduced to this most exquisite of musical repertoires.

Richard Stokes – speaker



Richard Stokes

The Miller's Daughter



Schubert Odyssey

Friday 5th April / 4:30pm - 5:30pm
£7 / Toll Gavel United Church

Schubert: Die schöne Müllerin

The second stop in our Schubert Odyssey sees exceptional tenor Nicholas Mulroy, hailed for his impassioned storytelling as Evangelist in Bach's St John Passion at the 2017 BBC Proms, join Libby Burgess in Die schöne Müllerin.

Perhaps the best-known of Schubert's song cycles, it tells the tale of a young lad stepping out into the world full of optimism, only to meet with bitter disappointment when the beautiful miller's daughter fails even to notice him. Heartbroken, he is ultimately driven to despair, and Schubert mirrors every step of his gradual mental descent in some of his finest music.

Nicholas Mulroy – tenor, **Libby Burgess** – piano



Nicholas Mulroy



© beverley photography

Skidby Windmill

Supper



Food event

Friday 5th April / 6pm - 7pm
Register to be sure of a place (see p 27) / Filmore & Union

Our Friday night supper is at the stylish Filmore & Union restaurant in the heart of Saturday Market. Relax among the candles, fresh herb pots and fur rugs and enjoy some fresh and wholesome food before the evening's concerts.

Reserve a place and pay the restaurant directly on the night.

Book your place at Supper on page 27

Notes from Afar



Friday 5th April / 7:30pm - 9:30pm
£13 / St Mary's Church

Finzi: Interlude **Schumann:** Fantasy **Ireland:** Songs of a Wayfarer
McNeff: The Pilgrim Rabbit Walks the Westwood (world premiere)
Schumann: Mary Stuart Songs
Bennett: The History of the Thé Dansant

The first ever New Paths festival concert included Beethoven's An die ferne Geliebte ('To the distant beloved'), and tonight we welcome one of the UK's most prolific pianists, Martin Roscoe, to perform Schumann's Fantasy, which quotes that same work, from a time when Schumann was forced apart from his own future wife Clara.

Inspired by the wayfarer's lamp in the priest's room, used to guide travellers across the Westwood, we programme Ireland's Songs of a Wayfarer, performed as part of our focus on historic RCM composers by former RCM student Edward Grint.

New Paths has commissioned new music for every one of its festivals, and our premiere tonight for oboe and piano also takes its inspiration from the town of Beverley: Stephen McNeff imagines that the Pilgrim Rabbit of St Mary's has the magical properties to transform from cold medieval stone to warm fur and whisker, going exploring at night to take advantage of the rich pickings available on the Westwood.

Mary Stuart became Queen of Scotland at the age of six days, was sent to France aged five, widowed at eighteen, imprisoned for almost twenty years, and eventually beheaded by Elizabeth I. Schumann sets five short poems, attributed to Mary herself, pleading and praying at different stages of this extraordinary life; her sense of doom perhaps mirrored his own at this late stage of his life. Noted mezzo-soprano Katie Bray sings these and Richard Rodney Bennett's frothy History of the Thé Dansant, a vivid depiction of 1920s holidays in the South of France based on postcards discovered in the composer's parents' attic.

Katie Bray – mezzo-soprano, **Edward Grint** – bass-baritone, **Alexandra Caldon** – violin, **Hannah Dawson** – violin, **Simon Tandree** – viola, **Cara Berridge** – cello, **James Turnbull** – oboe, **Libby Burgess** – piano, **Martin Roscoe** – piano



Katie Bray



Martin Roscoe

St Mary's

Founded in 1120, lovely St Mary's is one of the most beautiful parish churches in England.

Its wealth of attractive and interesting features include a collection of over 600 medieval and Tudor roof bosses, the Minstrel's Pillar, the Pilgrim Hare and the hidden Priest's Room; a medieval time capsule of items discarded there over the centuries from the 1330s onwards including the oldest surviving Maiden's Garland in the country.



© beverley photography

The End of Time



Friday 5th April / 10pm - 10:50pm
£5 / Minster – Quire

Messiaen: Quartet for the End of Time

The south window of the south transept of Beverley Minster contains stained glass symbolising 'the Age-Long Conflict between Good and Evil'; this aptly describes the philosophical subject matter of Messiaen's profoundly spiritual Quartet for the End of Time. Written while he was a prisoner of war in German captivity, the piece was premiered outdoors by Messiaen and his fellow prisoners using the instruments they could lay their hands on, in freezing temperatures, to a rapt audience of hundreds of inmates. 'Never was I listened to with such rapt attention and comprehension,' the composer later wrote.

The music combines the exotic dance rhythms and birdsong which permeate so much of his music with astonishing depictions of radiant eternity, inspired by the Biblical book of Revelation: pianist Steven Osborne concludes that the work 'offers a stark juxtaposition between the destructive and creative potentials of humanity, a struggle we all embody to some degree'.

John Slack – clarinet, **Eva Thorarinsdottir** – violin,
Tim Lowe – cello, **Libby Burgess** – piano



Eva Thorarinsdottir



© Kevin Merrills

Beverley Minster

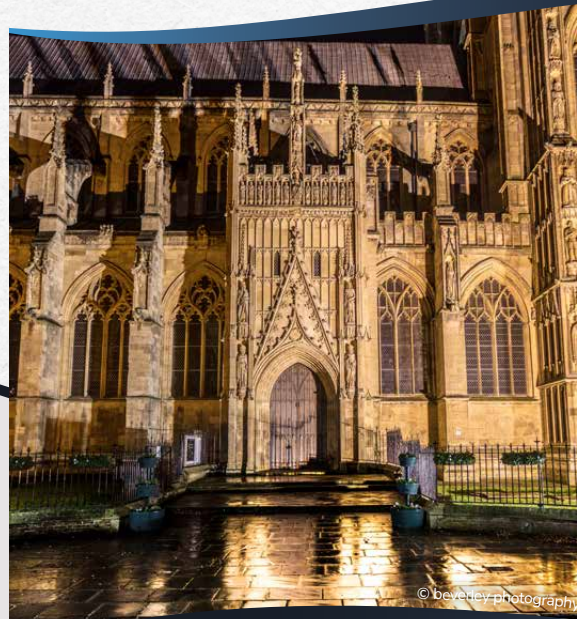
Beverley Minster

Beverley Minster is one of the finest gothic buildings in Northern Europe and is bigger than many cathedrals.

Its graceful twin towers dominate the medieval skyline of the town. A place of pilgrimage since AD721, a notable visitor to the shrine of St John of Beverley was Henry V, who won the battle of Agincourt on the Feast of the translation of St John.

The Minster is a building of astonishing beauty and elegance. Among its many alluring and significant features are the Percy Canopy, the Frith Stool, and a collection of over 70 medieval minstrel carvings in the nave; the largest collection of its type in the world.

New Paths is dedicated to the late Alan Spedding who was Organist and Director of Music at the Minster for over 40 years, and nurtured generations of musicians. Known for his kindness and good humour, we hope that Alan is smiling on our endeavours.



© beverley photography

The Westwood

The town of Beverley has always been surrounded by pastureland, the most famous being the 1000-acre Westwood – given to the townspeople in 1380 – with its iconic Blackmill and views to the twin towers of Beverley Minster in one direction, and the tower of St Mary’s in the other.

Locals still hold rights today, controlled by the pasture masters, to graze cattle and sheep there. Chalk taken from the pasture was used for the very foundations of Beverley’s streets. During the festival why not take a stroll on the Westwood among the daffodils and gaze up at the big skies of the East Riding all around? Sunrise and sunset are particularly beautiful times of day to experience this special feature of the region.



A Golden Era on Prince Consort Road



Bacon sarnies will be on sale, supplied by Café V. The perfect way to start the weekend!



Lena Eckels

Saturday 6th April / 11am - 12:15pm
£9 / St Mary's Church

Clarke: Viola Sonata **Howells:** Fantasy Quartet
Jacob: Hearken Unto Me **Bliss:** Pastoral
 Songs by **Vaughan Williams, Gurney & Bridge**

Whilst Beverley's famous Saturday Market bustles outside, step into beautiful St Mary's and bask in the luminous soundworld of quintessentially English music. In 1883 the Royal College of Music was set up by royal charter on South Kensington's Prince Consort Road. Amongst its founder professors was Sir Charles Villiers Stanford, who held a post there for the rest of his life and nurtured the talents of the greatest composers of the age. Today's programme is a snapshot of a special period of thirty years, during which an extraordinary cohort of composers passed through his class.

We continue our spotlight on Howells with his Fantasy String Quartet, a free-spirited and romantic work, and his close friend Gurney features in a set of ravishing English song. Arthur Bliss' serene Pastoral features the clarinet, whilst Gordon Jacob's rarely-heard Hearken Unto Me is scored for the unusual combination of soprano, viola and organ. Concluding the programme is Rebecca Clarke's monumental romantic viola sonata, first performed one hundred years ago in 1919; Clarke herself was an outstanding violist and became one of the country's first female professional orchestral musicians when she was selected by Sir Henry Wood to play in the Queen's Hall Orchestra.

Aoife Miskelly – soprano, **John Slack** – clarinet, **Richard Pinel** – organ, **Eva Thorarinsdottir** – violin, **Alexandra Caldon** – violin, **Lena Eckels** – viola, **Tim Lowe** – cello, **Libby Burgess** – piano



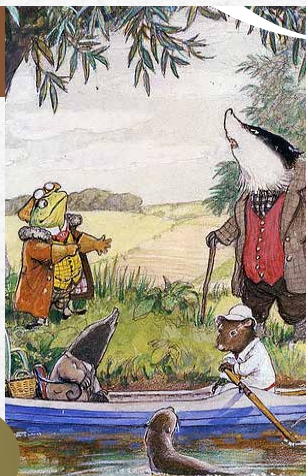
Richard Pinel

Supported by
 The Herbert Howells Trust

The Wind in the Willows



Free event



Saturday 6th April / 2pm - 3pm
Free - register to be sure of a place (see p 27) / East Riding Theatre

Rutter: The Wind in the Willows

New Paths is thrilled to present John Rutter's charming musical setting of one of the most loved children's stories of all time, Kenneth Grahame's The Wind in the Willows. Join Ratty, Mole, Badger, and the irrepressible Toad – plus the dastardly Ferrets and Weasels – in an adventure of river and woodland, featuring a cast of singers from the West End and the country's great opera stages. The perfect way to start the school holidays. Snap up your tickets now: this is sure to be a sell-out.

Arrive from 1:15pm for Wind in the Willows crafts in the East Riding Theatre House Café.

"...There is nothing – absolutely nothing – half so much worth doing as simply messing about in boats."

The Trout



Hannah Dawson

Saturday 6th April / 4:30pm - 5:15pm
£7 / Toll Gavel United Church

Schubert: Trout Quintet

In today's Schubert slot we take a break from song, and replace it with chamber music based on song – Schubert's uncompromisingly sunny piano quintet inspired by his own much-loved song Die Forelle, or The Trout.

Scored not for a conventional piano quintet lineup but rather for violin, viola, cello, double bass and piano, the work – written in 1819 – celebrates its 200th birthday this year. In his study of Schubert, Alfred Einstein declared that the 'Trout' Quintet is music 'we cannot help but love': Schubert's gift for melody and the charming interaction between the instruments are sure to be a joy in the hands of our dynamic musicians.

Hannah Dawson – violin, **Lena Eckels** – viola, **Cara Berridge** – cello, **John Tattersdill** – double bass, **Libby Burgess** – piano

Night at the Movies

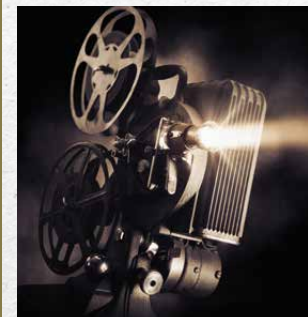


Robin Bailey

Saturday 6th April / 8:30pm - 10pm
£13 / East Riding Theatre

Classical music has always been central to the silver screen, enhancing the moments of dramatic tension and poignant beauty indispensably. This gala concert presents works that feature in films ranging from Shine and The Mission, to Truly, Madly, Deeply and Shawshank Redemption, via Henry V and West Side Story. Popular classics by Handel, Mozart and Bach meet Barber's Adagio, Pärt's Spiegel im Spiegel and Puccini's O mio babbino caro in what's bound to be an unforgettable evening for film-lovers and music-lovers alike.

Aoife Miskelly – soprano, **Katie Bray** – mezzo-soprano, **Helen Charlston** – mezzo-soprano, **Robin Bailey** – tenor, **Alexandra Caldon** – violin, **Eva Thorarinsdottir** – violin, **Tim Lowe** – cello, **John Tattersdill** – double bass, **James Turnbull** – oboe, **Alex Caldon** – trumpet, **Libby Burgess** – piano, **Martin Roscoe** – piano



Aoife Miskelly

Morning Worship



Worship

Sunday 7th April / 9:45am - 10:45am
Free – just turn up / St Mary's Church

Festival artists join the choir and congregation of St Mary's for their Parish Communion service.

Free event



St Mary's

Organ recital



Organ

Sunday 7th April / 12:30pm - 1:30pm
£7 / Minster

Guilmant: March upon a theme of Handel
Handel: Organ Concerto in F **Ireland:** Capriccio
Bach: Prelude and Fugue in G **Howells:** Rhapsody No 1
Holst arr. Wills: The Planets (extracts)

The opening of Beverley Minster's Snetzler organ in 1769 was celebrated with a huge Handel festival. In honour of the 250th birthday of this fine instrument, today's recital begins in celebratory style with Guilmant's grand March on a Theme of Handel, and Handel's own joyful Organ Concerto in F Op 4 No 4.

The Sunday organ recital has become a cornerstone of the New Paths programme. Ashley Grote, Master of the Music at Norwich Cathedral, makes a very welcome return to Beverley; he delighted hundreds of singers with his warmth and brilliant musicianship in the first ever New Paths event in 2016, the Alan Spedding memorial Come & Sing in the Minster.

Formerly of King's College Cambridge and Westminster Abbey, Ashley possesses an illustrious pedigree as an organist. His beautifully crafted recital programme includes Rhapsody No 1 by featured composer Herbert Howells and John Ireland's rollicking Capriccio. Standing between these pieces is the great Prelude and Fugue in G BWV 541, one of Bach's most beloved organ works.

To end the recital we blast off on a journey into outer space in three movements from Holst's ever-popular The Planets, sure to send festivalgoers out with a smile. Touch down to the Monk's Walk afterwards for a Sunday roast.

Ashley Grote – organ



Ashley Grote



Beverley Minster

Sunday roast



Food event

Sunday 7th April / 1:30pm - 2:30pm
Register to be sure of a place (see p 27) / Monk's Walk

Join us for a traditional Sunday Roast at the cosy Monk's Walk, one of the oldest pubs in Beverley – and, legend tells, the birthplace of sixteenth-century theologian and musician John Merbecke!

Eternal Source



Moment to Reflect

Sunday 7th April / 3pm - 3:30pm
Free – just turn up / St Mary's Church

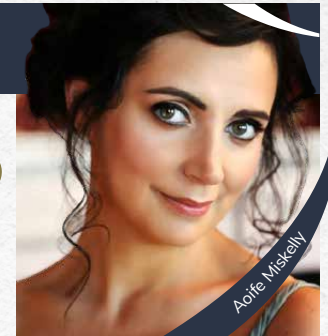
Howells: Rhapsodic Quintet **Puccini:** Crisantemi
Handel: Eternal Source of Light Divine

Free event

The second of our moments of reflection takes place in the stillness of St Mary's Church. The final work in our Howells feature this year, his poetic Rhapsodic Quintet for clarinet and strings, was written 100 years ago this year, and has been described by the great clarinettist Thea King as 'one of the loveliest moments in music', containing 'the peace of ages'.

Puccini's string writing is best known in his sweeping operatic scores, but this single-movement string quartet Crisantemi ('Chrysanthemums') is a more intimate response to death. Meanwhile Handel's radiant Eternal Source of Light Divine – to which Meghan Markle famously walked up the aisle last year – provides a serene and optimistic completion to a beautiful moment of contemplation.

Aoife Miskelly – soprano, **John Slack** – clarinet,
Alex Caldou – trumpet, **Alexandra Caldou** – violin,
Eva Thorarinsdottir – violin, **Lena Eckels** – viola,
Tim Lowe – cello, **Richard Pinel** – organ



Aoife Miskelly



Supported by
The Herbert
Howells Trust

© Kevin Merrills

Swan Song



Schubert Odyssey

Sunday 7th April / 4:30pm - 5:30pm
£7 / Toll Gavel

Schubert: Schwanengesang

Our Schubert Odyssey concludes with Schwanengesang, Schubert's own swan song, published shortly after his death. Whilst perhaps not intended as a cycle by the composer, the thirteen songs were released as such by his publisher, and are united by themes of love and separation, nature and loss.

Described by his publisher Haslinger as 'the final blooms of Schubert's creative muse', the set contains some of Schubert's finest songs – from the familiar serenade Ständchen, to the dramatic Der Atlas and the darkly haunting Der Doppelgänger. Grammy award winning bass Jonathan Lemalu is in great demand on the global stage and here he joins Artistic Director Libby Burgess.

Jonathan Lemalu – bass, **Libby Burgess** – piano



Jonathan Lemalu



Libby Burgess

Supper



Sunday 7th April / 6pm - 7pm
Register to be sure of a place (see p 27) / Lucia's

Our final supper of the festival takes us to Lucia's, where Italian, Mediterranean and tapas food combine, and the cocktails are legendary!

Reserve a place and pay the restaurant directly on the night.

"Lucia pulls off the trick of having both a relaxed atmosphere, and a touch of glitz."
(Living North Magazine)

Clara's World



Sunday 7th April / 7:30pm - 9:45pm
£13 / St Mary's Church

Mendelssohn: Piano Trio in D minor.
Schubert: Rondo in A major for piano duet
Songs and piano music by **Clara & Robert Schumann, Fanny & Felix Mendelssohn, Liszt, Chopin & Brahms.**

Clara Schumann, born Clara Wieck, was one of the most distinguished pianists and composers of the Romantic era. In this her 200th anniversary year we weave a tapestry of song and piano music by the composers with whom she surrounded herself, featuring outstanding song singers Aoife Miskelly and Katie Bray, as well as some of Clara Schumann's own beautiful piano works, played by renowned pianist Martin Roscoe.

We hear extracts from Robert Schumann's wedding present to her, the song cycle Myrthen, as well as songs by Brahms, her closest friend and confidante. The composers whose music she regularly performed included Liszt and Chopin, and we set these alongside Schubert – reuniting Martin Roscoe and Libby Burgess after their Beverley Chamber Music Festival duet concert, for a performance of Schubert's A major Rondo. Both Fanny and Felix Mendelssohn also feature, the latter's fiery and lyrical Piano Trio in D minor bringing the festival to a close in a blaze of virtuosic energy.

Aoife Miskelly – soprano, **Katie Bray** – mezzo-soprano,
Jamie Campbell – violin, **Cara Berridge** – cello,
Libby Burgess – piano, **Martin Roscoe** – piano



Cara Berridge



Jamie Campbell

The Ceiling of Kings

The glorious chancel ceiling of St Mary's, dated 1445, includes the Kings of England from Eggbert in 827 to Henry VI, who died in 1471.

Each is set in a gold panel surrounded by scarlet ribs and gilded bosses. Be sure to look up and marvel at this wondrous ceiling during your time at the festival.

© Paul Hurst

Tickets & Passes

How to book

Tickets go on sale on Saturday 26th January and are available to buy online, by telephone, by post or in person.

Online:

Please visit our website www.newpathsmusic.com and use the secure online booking service. Please print your tickets at home and bring them to the concerts. Online booking will close two hours before each concert starts. There is a £1.00 administration charge per transaction for tickets and passes bought online.

By telephone

Please call the box office, Beverley Tourist Information Centre, on 01482 391 672. There is a £1.00 administration charge per transaction for tickets and passes bought over the phone.

By post

Please send your completed booking form (see overleaf), along with a cheque payable to 'East Riding of Yorkshire Council', and a stamped self-addressed envelope to: Beverley Tourist Information Centre, East Riding Treasure House, Champney Road, Beverley, East Yorkshire, HU17 8HE.

In person

Beverley Tourist Information Centre is open 9:30am-5pm (weekdays) / 9am-4pm (Saturdays). Payment may be made by cash, card or cheque. The TIC is at the East Riding Treasure House, Champney Road, Beverley, HU17 8HE.

On the day of the concert

Tickets will be available to purchase (by cash or cheque) on the door of the concert from 30 minutes prior to the performance, subject to availability.

Seating

Seating is unreserved at all venues. One of our Friends' benefits is the option to reserve seating: see p 28 for information on becoming a Friend of New Paths.

Refunds

We regret that refunds can only be given if the concert is sold out and we are able to sell on the ticket. Please note that there will be a 10% administration charge.

Passes

We offer a number of passes to multiple events in festival, which offer exceptional value for money. The discounts available range from 7% to as much as 19%. Don't miss out on these savings to be had.

Festival pass:

Buy a festival pass, covering entry to all ticketed events, at the bargain price of £100.

Day passes

Thursday 4th April - £30
Friday 5th April - £30
Saturday 6th April - £26
Sunday 7th April - £25

Schubert pass

Entry to all four Schubert Odyssey concerts (4:30pm every day) - £25

Night owl pass

Entry to both late-night concerts (10pm Thursday & Friday) - £8.50

Financial hardship

A limited number of tickets are available to anyone who would like to attend a concert but cannot afford a ticket. Please email admin@newpathsmusic.com if you would like to attend a concert but you are demonstrably unable to afford a ticket (for example due to unemployment).

Golden Ticket Scheme: free tickets for young people

If you are under 18 or in full time education you can come to festival concerts free of charge. You can book these 'Golden Tickets' online at www.newpathsmusic.com or by emailing us at admin@newpathsmusic.com.

One free ticket is available per adult accompanying persons aged 15 and younger.



Booking Form

Ticketed events:

Please send your completed booking form, along with a cheque payable to 'East Riding of Yorkshire Council', and a stamped self-addressed envelope to: **Beverley Tourist Information Centre, East Riding Treasure House, Champney Road, Beverley, East Yorkshire, HU17 8HE.**

Tickets can also be bought online, by phone, or in person – see p 25.

Date	Time	Location	Event	Price	Quantity
Thurs 4th	11am - 12:15pm	Toll Gavel	Dawn Chorus	£9	
Thurs 4th	4:30pm - 5:45pm	Toll Gavel	A Winter's Journey	£7	
Thurs 4th	7:30pm - 9:30pm	St Mary's	Inspirations	£13	
Thurs 4th	10pm - 10:45pm	St John's	Stabat Mater	£5	
Fri 5th	11am - 12:15pm	Toll Gavel	By the Waters	£9	
Fri 5th	4:30pm - 5:30pm	Toll Gavel	The Miller's Daughter	£7	
Fri 5th	7:30pm - 9:30pm	St Mary's	Notes from Afar	£13	
Fri 5th	10pm - 10:50pm	Minster	The End of Time	£5	
Sat 6th	11am - 12:15pm	St Mary's	A Golden Era on Prince Consort Road	£9	
Sat 6th	4:30pm - 5:15pm	Toll Gavel	The Trout	£7	
Sat 6th	8:30pm - 10pm	ERT	Night at the Movies	£13	
Sun 7th	12:30pm - 1:30pm	Minster	Organ recital	£7	
Sun 7th	4:30pm - 5:30pm	Toll Gavel	Swan Song	£7	
Sun 7th	7:30pm - 9:45pm	St Mary's	Clara's World	£13	

Pass	Price	Quantity
Day pass for Thurs 4th April	£30	
Day pass for Fri 5th April	£30	
Day pass for Sat 6th April	£26	
Day pass for Sun 7th April	£25	
Festival pass	£100	
Schubert pass	£25	
Night owl pass	£8.50	

Name:

Address:

Email:

Phone Number:

Booking Form

Meals:

Places at meals must be reserved in advance. Diners will be contacted in advance of the meal and asked to provide a pre-order from the menu. Payment for meals is to be made on the day direct to the restaurant.

Places at meals can be booked online at www.newpathsmusic.com or by sending the following information by post to **New Paths Music, 2 Wheatsheaf Lane, Beverley, HU17 8BA,** or emailing it to admin@newpathsmusic.com

Date	Time	Location	Meal	No. of places
Thurs 4th	12:30pm - 1:15pm	ERT House Café	Lunch	
Thurs 4th	6pm - 7pm	Carluccio's	Supper	
Fri 5th	6pm - 7pm	Filmore & Union	Supper	
Sun 7th	1:30pm - 2:30pm	Monk's Walk	Sunday roast	
Sun 7th	6pm - 7pm	Lucia's	Supper	

Children's events:

These events are free but we strongly advise you reserve a place as they are usually oversubscribed.

Places can be reserved online at www.newpathsmusic.com or by sending the following information by post to **New Paths Music, 2 Wheatsheaf Lane, Beverley, HU17 8BA,** or emailing it to admin@newpathsmusic.com

Date	Time	Location	Event	No. of Children	No. of Adults
Weds 3rd	10:30am - 11:15am	Toll Gavel	Babies & Toddlers: A Musical Voyage		
Sat 6th	2pm - 3pm	ERT	The Wind in the Willows		

Name:

Address:

Email:

Phone Number:

Join our mailing lists to receive information about New Paths festivals including the Beverley Chamber Music Festival.

I would like to join the New Paths email mailing list.

My email address is:.....

I would like to join the New Paths postal mailing list.

My postal address is:.....

Friends & Patrons of New Paths

Community is at the core of New Paths, and we count ourselves extremely fortunate to have had a loyal circle of supporters from the outset. In its three years, New Paths has made a substantial contribution to the cultural life of the East Riding, and has attracted national attention for its many and ambitious plans.

We believe that music enriches lives and we strive to bring music to all corners of the community. Our mission is to provide inspiring musical experiences which contribute to the social, cultural, educational and economic wellbeing of the communities in which we operate, and to the artistic life of the UK.

These aims can only be realised with the ongoing financial contributions of our supporters.

In our inaugural year as a registered charity we built up a circle of over 100 Friends and Patrons, whose support is vital to the continuation and success of the festival. We are determined to continue to provide inspiring musical experiences. Please help one of the country's newest and most innovative festivals continue to grow and thrive by becoming a Friend or Patron.



Be a Friend of New Paths from only:

£50 per year
(Single)

£80 per year
(Double: partners or other pairs)

Friends of New Paths are thanked for their support with:

- An invitation to a special event during the festival
- A biannual newsletter
- The opportunity to reserve chosen seats at ticketed events (seating is otherwise unreserved)
- Recognition as Friends of New Paths

We are seeking Patrons of New Paths who are able to support us to the tune of:

• £100+ • £500+ • £1,000+ • £5,000+

Patrons may, for example, choose to:

- sponsor a concert
- sponsor an artist
- sponsor a day of the festival
- sponsor a community or education project

Our Chairman, Roland Deller, would be delighted to hear from anyone interested in these and other sponsorship packages.

Friends & Patrons of New Paths

Please return the form below to **New Paths Music, 2 Wheatsheaf Lane, Beverley, HU17 8BA**, or email the information to roland@newpathsmusic.com.

Name:

Address:

Email:

Phone Number:

I/we would like to become/remain a single/double Friend of New Paths, at £50/£80 per year (delete as applicable)

I/we would like to donate the additional sum of £ _____ to New Paths Music Limited

I/we would like to become/remain a Patron of New Paths (£100+ per year)

I enclose a cheque for £ _____.

Payable to: New Paths Music Ltd. Send to: 2 Wheatsheaf Lane, Beverley, East Yorkshire HU17 8BA

I am making a direct transfer of £ _____.

Bank: Barclays Bank PLC | Sort code: 20-03-84.
Account: New Paths Music Ltd. Account no: 93245357

I am setting up a standing order to pay £ _____ (insert amount) per month / quarter / annum (delete as appropriate), as follows-

Bank: Barclays Bank PLC | Sort code: 20-03-84.
Account: New Paths Music Ltd | Account no: 93245357

giftaid it

Boost your donation by 25p of Gift Aid for every £1 you donate. Gift Aid is reclaimed by New Paths Music Ltd. from the tax you pay for the current tax year.

In order to Gift Aid your donation you must tick the box below:

I want to gift aid my donation. I am a UK taxpayer and understand that if I pay less Income Tax and/or Capital Gains Tax in the current tax year than the amount of Gift Aid claimed on all my donations it is my responsibility to pay any difference.

Signed:

Dated:

New Paths Music Limited is a company registered in England and Wales and limited by guarantee (company number 10941917). Registered charity number 1176545.

Save the Date

25th – 28th September 2019



New Paths is proud to have been entrusted with the running of the long-established Beverley Chamber Music Festival, one of the jewels in the cultural crown of the region, bringing some of the world's leading musicians to the East Riding each Autumn.

We are greatly looking forward to the 2019 Beverley Chamber Music Festival which will celebrate treasures of the Russian chamber music repertoire, including masterpieces by Rachmaninov, Shostakovich, Tchaikovsky, Prokofiev and Borodin. It will also profile Elgar, showcasing his great chamber music.

Save the date and join Co-Artistic Directors Martin Roscoe and Libby Burgess for four days of world-class chamber music in Beverley this autumn.

New Paths
Music
presents:

BEVERLEY Chamber MUSIC FESTIVAL



Become a volunteer for New Paths Music

Come and join the inner circle of the New Paths volunteering team, our superstars behind the scenes who make things happen!

There are many ways you can help, from driving artists to airports or stations, to putting up posters, from checking tickets or serving coffee to setting up venues or building a stage.

Volunteering is sociable and rewarding; it can be hard work, but you can learn new skills and gain experience, and you leave knowing that you helped make the festival happen. New Paths is renowned for its friendliness and the warmth of its welcome.

Please contact Roland on roland@newpathsmusic.com or at New Paths Music, 2 Wheatsheaf Lane, Beverley, HU17 8BA, to volunteer for New Paths.

Be part of the team that keeps spirits high and the show on the road!



Venues

1. St Mary's Church
North Bar Within, Beverley, HU17 8DL
2. Beverley Minster
Highgate, Beverley, HU17 0DN
3. Toll Gavel United Church
Toll Gavel, Beverley, HU17 9AA
4. East Riding Theatre
Lord Roberts Road, HU17 9BE
5. St John of Beverley RC Church
5 North Bar Without, Beverley, HU17 7AG
6. Carluccio's
7 Toll Gavel, Beverley, HU17 9AA
7. Lucia Wine Bar & Grill
5 North Bar Within, Beverley, HU17 8AP
8. Filmore & Union
31 Saturday Market, Beverley, HU17 8BE
9. The Monks Walk
19 Highgate, Beverley, HU17 0DN



Accessible facilities

The festival welcomes everyone, and all concert venues are accessible to those using wheelchairs. Each of these venues also has wheelchair accessible toilet facilities. If you have questions about other issues of access please contact us on admin@newpathsmusic.com.



We are most grateful to local photographers, Nick Hedges, Kevin Merrills and Paul Murphy, and also to Paul Hurst and Ian Wilson, for allowing us to use their photographs of Beverley in this brochure.

Designed by www.attackcreative.co.uk



Keep in touch

 NewPathsMusic

 @NewPathsMusic

 info@newpathsmusic.com

2 Wheatsheaf Lane,
Beverley, HU17 8BA



www.newpathsmusic.com

Artistic Director: Libby Burgess • Founder: Roland Deller