

HOTELS AND RESORTS



SAOTA

GLOBAL REGIONS



SAOTA has a global footprint with projects on 6 continents.

We have a clear understanding of the place of design in the world, and how to design and deliver architectural projects in diverse markets.

COMPANY PROFILE

SAOTA, a leading firm of architects is driven by the dynamic combination of Stefan Antoni, Philip Olmesdahl, Greg Truen, Phillippe Fouché and Mark Bullivant who share a potent vision easily distinguished in their design.

This, paired with both an innovative and dedicated approach to the design, documentation and execution of projects globally, has seen SAOTA become an internationally sought-after brand.

SAOTA has a global footprint with projects on 6 continents. We have a clear understanding of the place of design in the world and how to deliver architectural projects in diverse markets.

This success is driven by a design philosophy that connects function and form, and the pursuit of true architectural design to create appropriate solutions. The focus on achieving maximum value has also led to global invitations to design, build and create highly prestigious projects.

The philosophy of practice is embodied in the spirit of enquiry that flourishes amongst its staff. This spirit not only guides the firm, but enables it to maintain its position as definitive designers in a highly competitive and fast-changing industry. Increased exposure to the global marketplace has seen SAOTA flourish as cities and contexts allow for infinite inspiration which can be seen radiating from the approach to design.

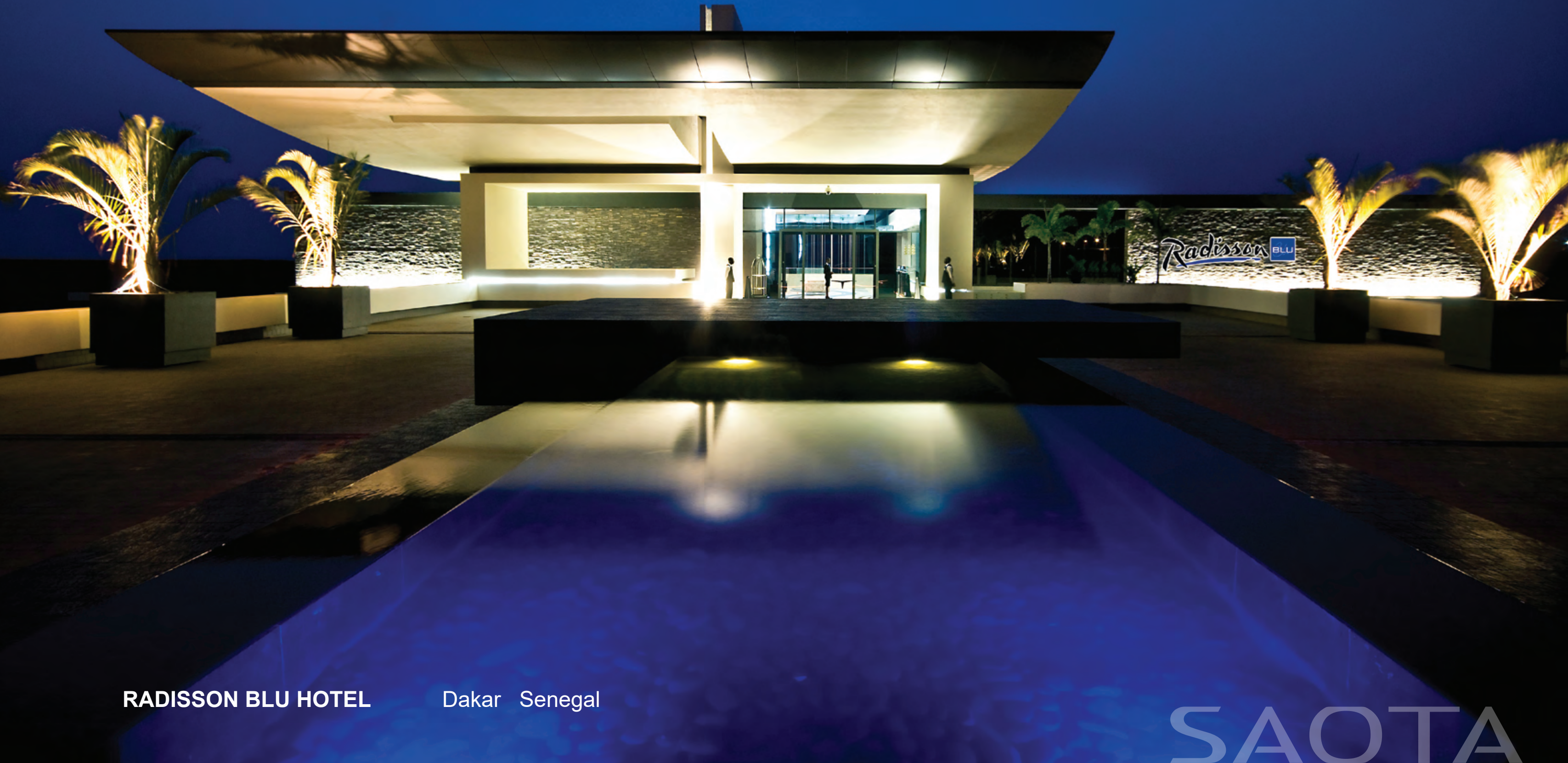
SAOTA is also focused on using the most current computer technology in its design process, both to understand the design and to communicate the design to our clients. To this end we are world leaders in the use of Revit and have also developed virtual reality tools for use in our process.

“We strive to promote a service marked by excellence both in our buildings and in addressing the needs of our clients, with the focus on high standards & elegance.”



SAOTA

HOTELS AND RESORTS



RADISSON BLU HOTEL

Dakar Senegal

SAOTA

HOTELS AND RESORTS

RADISSON BLU HOTEL

Dakar Senegal

Overlooking the Atlantic Ocean and tucked away in the Fann Corniche, an area in the south of the city that houses exclusive villas and international embassies, the Radisson Blu Hotel is a contemporary expression of Senegalese style.

The hotel was commissioned by the Teyliom Group and forms part of a larger development that includes designer retail stores, apartments, spas, cinemas and a bowling alley.

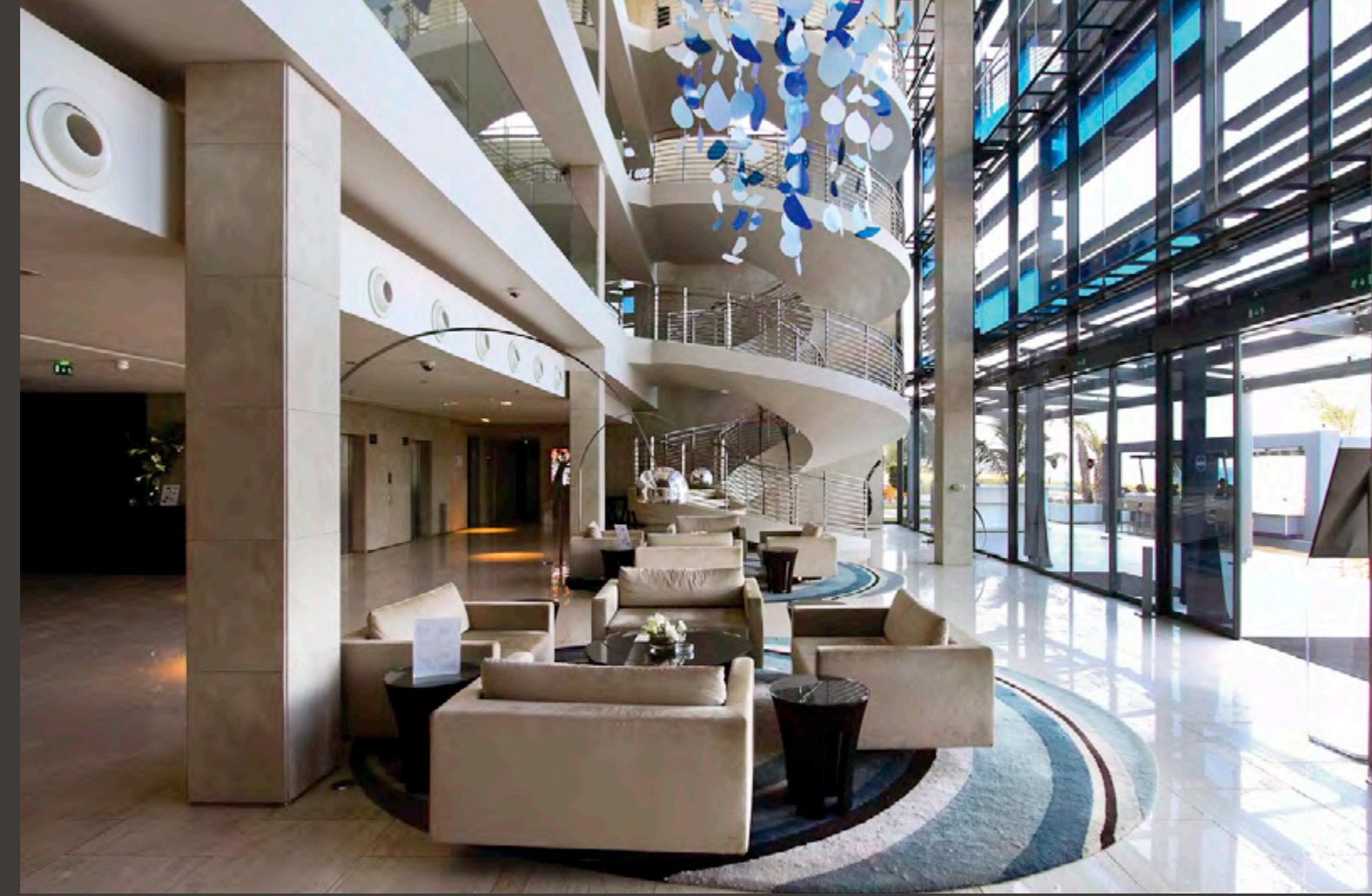
The brief called for 180 suites, a fine-dining restaurant, an all-day restaurant, conference facilities, meeting rooms and admin facilities.

The site is accessed by the Route De la Corniche Ouest and the historically significant

Place du Souvenir borders the site towards the south. The corniche is an important public facility and a condition of the development was that the bulk of the building needed to be developed below road level.

The angled diagram of the building was developed to take full advantage of the ocean views towards the west.

The dramatic entrance with quadruple-volume foyer space and spiral staircase is the primary node connecting the rooms to the pool and restaurant levels below, as well as the conferencing facilities.



SAOTA

HOTELS AND RESORTS

CHEETAH PLAINS Sabi Sands South Africa

SAOTA

HOTELS AND RESORTS

CHEETAH PLAINS

Sabi Sands South Africa

Cheetah Plains is a new Game Lodge designed by ARRCC located in the Sabi Sand, South Africa, a wildlife sanctuary bordering the Kruger National Park.

The clients chose to pursue a different offering for the market; by avoiding the typical typology of creating a central communal space surrounded by bed-room suites, the accommodation is split into three separate, private components referred to as the "Plains Houses."

The Plains Houses are made up of clusters of free-standing buildings carefully arranged to accommo-date existing natural features such as trees, typography and views – thereby minimising intrusion into the landscape. Over time, nature will further soften and absorb

the sculptural masses into their environment. Each house is comprised of a main communal living building surrounded by four-bedroom suites.

The living facilities include a private arrival courtyard with covered waiting canopies, an expansive open plan Lounge, Dining and Bar space with adjoining air-conditioned Wine Room, a more private Family Room, outdoor boma area, expansive terrace and heated pool. Across from the pool a sculptural raw steel Pool Pavilion, inspired by the canopy of the local Tamboti tree, perches over the bush.

Each house is also equipped with its own commercial kitchen with dedicated Chef and culinary team.



SAOTA

HOTELS AND RESORTS



SINDIA CAMP Sindia Senegal

SAOTA

HOTELS AND RESORTS

SINDIA CAMP

Sindia Senegal

On the edge of the Réserve de Bandia, 50km south-east of Senegal's capital, Dakar, is Sindia Camp.

Set in an ancient baobab forest, this contemporary private desert wilderness eco-lodge and equestrian center has been created by leading interior design specialists ARRCC as an idyllic family retreat for a prominent West African businessman.

Sindia Camp takes luxury private lodge design and style to a new level with a bold and contemporary interpretation of the classic African tented camp.

This striking open-plan design comprises five private double-bedroom suites, two lounge pavilions and a modern equestrian stable, all

screened at its entrance by a dramatic nine-meter-high sandstone wall.



SAO TA

HOTELS AND RESORTS



ALPHEN HOTEL Cape Town South Africa

SAOTA

HOTELS AND RESORTS

ALPHEN HOTEL

Cape Town South Africa

After the historic Alphen Hotel in the Constantia Valley re-opened as a 5-star boutique establishment, the 4.5-hectare property offers boutique accommodation with two independently operated restaurants.

Further features include three bars, a deli, a conference and business centre, and outdoor events facilities – all open to the public.

Not your traditional 5-star hotel, a modern and playful twist has been added to the décor and design, whilst preserving the rich backdrop of history. The concept marries the old with the new and part of the décor is an extensive private collection of antique furniture and art, combined with specially commissioned oversized, contemporary new works.



HOTELS AND RESORTS



YACHTCLUB

Shenzhen China

HOTELS AND RESORTS

YACHTCLUB

Shenzhen China

Set on a long narrow coastline sits the design for a hotel, yacht club and conferencing facilities.

The building, a 420-meter long, six storey structure, hugs the coastline of the South China sea.

Services are distributed from the lower levels, as the upper level is the most visible from the road and is the primary public, guest-face space.

Parking requirements were a key design consideration, with the building making use of a mechanical system that stacks the cars over one-another. Every cubic meter of space is valuable and well-considered.

The integration of the building into the landscape and the re-introduction of landscaping to the environment has driven many of the design decisions.

STATUS: Under Construction



HOTELS AND RESORTS



THE HEART OF EUROPE

Dubai UAE

SAOTA

HOTELS AND RESORTS

THE HEART OF EUROPE

Dubai UAE

Located in The World islands, Dubai, as part of the Heart of Europe hospitality development, this 469-key Ibiza-themed hotel principally focuses on the lively central lagoon, while at the same time responding to the adjacent pedestrian-dominant marina and guest-arrival forecourt.

Applying this theme to this resulted in the hotel having a distinct design character that engages with guests at various scales: from a large art-dominated public forecourt leading to an impressive triple-volume lobby, from intimate dining options along the marina to the other worldly lagoon at the heart of the hotel.



HOTELS AND RESORTS



EPIQUE Bodrum Turkey

SAOTA

MULTI RESIDENTIAL

EPIQUE

Bodrum Turkey

Yalikavak, 18 kilometers from Bodrum, on the Aegean Coast. Considered to be one of the most elite villages on the Bodrum Peninsula.

A contemporary residential development on the prestigious coast of Yalikavak in Bodrum, Turkey, redefining the concept of "personal luxury" in this region. The project consists of 75 private villas, designed to capture a sense of timeless luxury with a specific emphasis on integration into the landscape.

These villas have a dedicated beach and related clubhouse facilities, and share the peninsula with a 100 berth marina, primarily for villa owners.

STATUS: Under Construction



SAOTA

HOTELS AND RESORTS



COSTA RICA RESORT

Costa Rica Central America

SAOTA

HOTELS AND RESORTS

COSTA RICA RESORT

Costa Rica Central America

Located in Punta Sabana, Costa Rica. Encompassing the forest, beach and the ocean while transforming hues of red earth in the dry season to a lush green landscape in the rainy season.

The diverse landscape is characterized by expansive beaches that edge densely forested banks, dramatic sheer cliffs and rocky outcrops that puncture the ocean.

The program included the conceptualization of a master plan referencing restaurants, beach clubs, spa and fitness facilities, and various accommodation types.



HOTELS AND RESORTS



MONT CHOISY

Grand Baie Mauritius

SAOTA

HOTELS AND RESORTS

MONT CHOISY

Grand Baie Mauritius

Located on the northern tip of Mauritius in Grand Baie, Le Parc de Mont Choisy is the only residential golf and beach estate in the North of Mauritius.

The estate consists of 1200 acre's of former sugar cane farmland that straddles the Pointe aux Canoniers peninsula. Phase 1 is situated on what was a small forest created by the original owners.

Residential components comprise a variety of building types. The Banyan Grove apartments arranged in clusters of 3 storey buildings set around a large organic swimming pool, the Le Peninsule apartments arranged in a formal layout around gardens, a communal pool and water features with pavilions, 3 types of villas and townhouses.

Future phases will include a country club with tennis courts, gym, swimming pool, spa, clubhouse & restaurants and a beach club with pool-side restaurant & cocktail bar, offering a wide range of water sports.



SAOTA

HOTELS AND RESORTS

SINDIA RESORT

Sindia Senegal

A structurally striking private resort placed on the edge of a man made water feature in the Senegalese countryside.

Inspired by the nomadic Fulbe architecture of Senegal, Sindia forms part of a larger estate in the Dakar desert.



HOTELS AND RESORTS

QUINTA ROSA

Luanda Angola

Perfectly situated on the water's edge 10 kilometres south of Luanda, this proposed 260-room luxury hotel is designed to serve the city's growing business needs, whilst also attracting the weekend local leisure market and those travelling to the popular Mussulo Peninsula, which is a short boat trip away from the hotel's marina.

The project has 260 sea-facing rooms, conferencing facilities, residential penthouses and beach villas, a yacht club, a business centre, spas and gyms, and eight restaurants and cafes.

It will also have private transport facilities that will give guests access to Mussulo Island. The concept is a perfect blend of resort luxury and business discernment.

Transitioning from conferencing and elegant dining at the entrance down to a yacht club and beach bars on the beach the building reflects Luanda's vibrant spirit.

The hotel has been developed by FiniCorp with interiors by ARRCC.



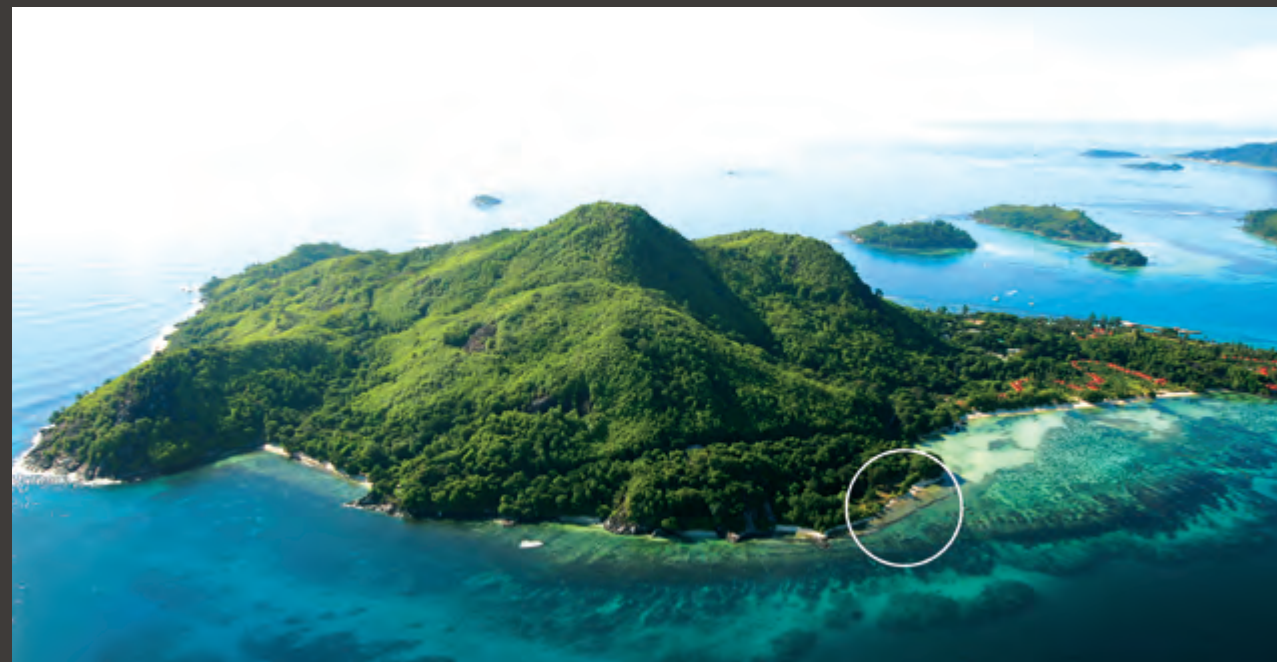
HOTELS AND RESORTS

ZILWA

St Anne Island Seychelles

Zilwa, is a five-star luxury island resort and marina situated on St Anne Island, Seychelles.

Comprising two exclusive hotels, a marina restaurant and retail facilities, beach and sports clubs, hillside villas and fractional units, this development exudes both elegant sensuality and understated chic – the ultimate barefoot luxury.



HOTELS AND RESORTS



HOTEL CONAKRY Conakry Guinea

SAOTA

HOTELS AND RESORTS

HOTEL CONAKRY

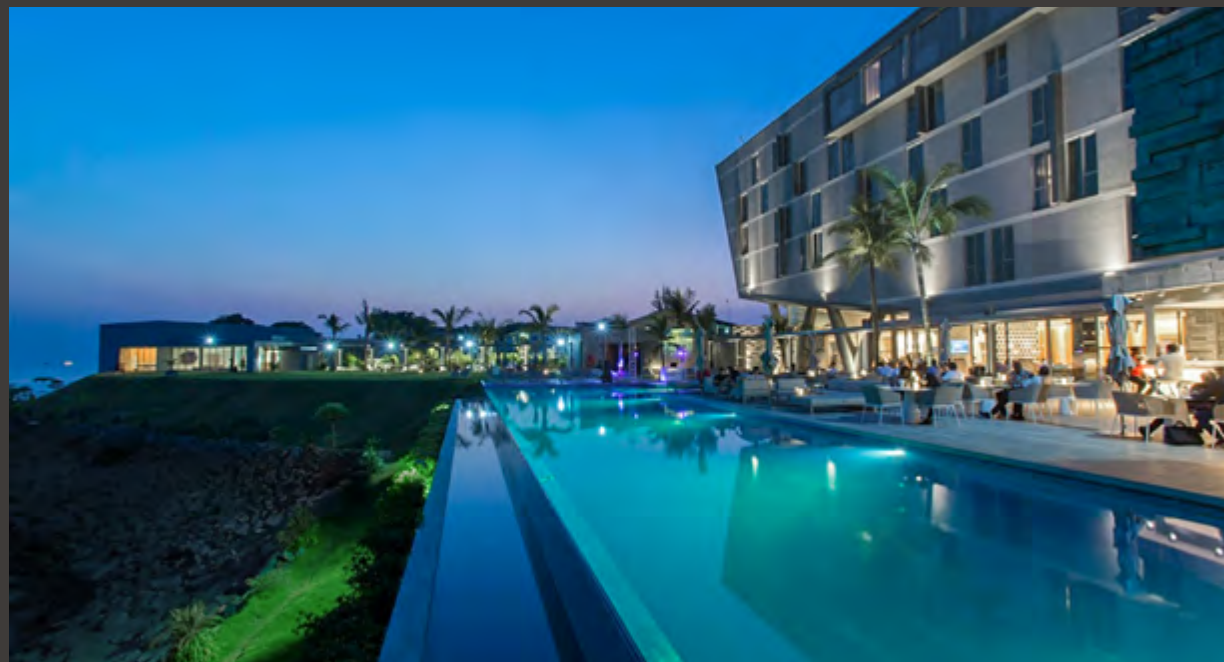
Conakry Guinea

NooM Hotel Conakry is the first of a number of hotels for the Mangalis Hotel Group in West and Central Africa – sets a new benchmark in the three- to four-star hotel market.

Located on an irregular part of the coastline, the hotel design is inspired by its coastal site, with the linear form of the building thrusting towards the sea.

Particular focus was given to the site master planning; with inclusion of generous outdoor recreational areas which enjoy sea frontage and sunsets towards the west.

NooM Hotel Conakry is best appreciated for its reception, bar area and main dining room area. Attention has also been given to state-of-the-art conferencing facilities.



HOTELS AND RESORTS



HOTEL DOUALA

Douala Cameroon

HOTELS AND RESORTS

HOTEL DOUALA

Douala Cameroon

This business hotel, located within urban Douala, Cameroon, is positioned on a promontory overlooking the working harbour and river delta.

The design of this contemporary hotel, containing world-class facilities and accommodation, has an aesthetic that draws strongly on its African context.

With a bold simplicity, inspired by local textiles and earthenware, the sculptural form containing the guest suites is elevated on a generous podium, which contains the various public and conferencing facilities, creating a striking silhouette when viewed from below, while offering guests a panoramic view across both the city and delta.



HOTELS AND RESORTS



HOTEL ABIDJAN Abidjan Ivory Coast

SAOTA

HOTELS AND RESORTS

HOTEL ABIDJAN

Abidjan Ivory Coast

A 25-storey hotel, conference centre and apartment building located on a tight urban site overlooking the Boulevard de Gaulle.

The main hotel pool deck is elevated eight storeys above street level, providing dramatic lagoon and city views.

STATUS: Under Construction



HOTELS AND RESORTS

HOTEL POINTE-NOIRE

Pointe-Noire Congo

As part of the first-phase roll out of a new hospitality brand within West and Central Africa, this three-star business hotel is located in central Pointe-Noire, a coastal Congolese city known for its pristine beaches, and incorporates public and conference facilities in a generous elevated podium deck that capitalises on distant city and harbour views.

Inspired by the regional urban fabric, and referencing the local timber trade, the built form is contemporary with roots in the heritage of Pointe-Noire.

Particular attention is given to key elements, such as the inclusion of generous outdoor recreational areas, the Afro-centric reception, bar area and main dining room area as well as the world-class conferencing facilities.



HOTELS AND RESORTS

HOTEL COTONOU

Cotonou Benin

As part of the first phase roll-out of a new hospitality brand within West and Central Africa, this three-star business hotel is located on the coast of Cotonou, within convenient proximity to the Cotonou International Airport, and incorporates public and conference facilities.

The façade takes inspiration from the local textile industry, creating a graphic, geometric identity. Particular attention was given to key elements, such as the inclusion of generous outdoor recreational areas, bar area and main dining room area as well as conferencing facilities.



SAOTA

HOTELS AND RESORTS

HOTEL KINSHASA

Kinshasa DRC

As part of the roll-out of a new hospitality brand within West and Central Africa, this three-star business hotel incorporates world-class public and conferencing facilities. Located in the capital city, Kinshasa, on the banks of the Congo River, with views across to the heart of Brazzaville.

With nautical references in the building form, and screens designed to emulate the play of light on the river surface, this hotel captures a sense of place while delivering on the key brand elements: generous outdoor areas, a contemporary reception, bar area and main dining room area, as well as conferencing facilities.



HOTELS AND RESORTS



POPENGUINE

Popenguine Senegal

The eco-village of Popenguine is a coastal gem in Senegal. The site of a luxury resort, the dramatic arrival vista reveals a signature building emerging from the landscape.



SUSHI BAR

Dakar Senegal

The concept design of a new open-air sushi bar in Dakar, Senegal with a dramatic roof structure and a beach feel with loungers and palm trees.



LA BOCA

Cabarete Dominican Republic

A private resort on a unique property in Cabarete, Dominican Republic. Residential villas, recreational amenities and a start-up incubator workspace are the primary building components to this live-work-play environment in paradise.



TERROIR

Cape Town South Africa

An invited competition, won by SAOTA, to design an exclusive wine estate, hotel and spa with restaurants and delis surrounding a werf courtyard. A sensitive and sustainable design capturing the essence of Cape country living.

HOTELS AND RESORTS



SHENZHEN

Shenzhen China

Five different types of private villas in the Guangdong Province, Mainland China. The varying types of beach-facing villas, each with their own look and feel, were to be scattered along a luscious hilltop along a 2 kilometer stretch of land

PORTONOVI

Kumbor Montenegro

Set in a historic part of Montenegro, within a greater development aimed at redefining the existing hospitality industry, this Beach Club facility and related apartments is an interpretation of the past, inspired by local medieval architecture.

ADAM AND EVE

Koh Samui Thailand

Perched on a very steep site overlooking the ocean in Koh Samui, the units are U-shaped protective shells scattered in an untouched Edenic landscape, the interiors playing on the themes of purity and uncluttered comfort.

JARDIN HOTEL

Abidjan Ivory Coast

A business hotel incorporating public and conference facilities in a generous elevated podium deck.

SPECIAL CAPABILITIES

DESIGN

Our architectural designers are highly skilled and experienced, allowing schemes to be conceptualised in dynamic, yet legible presentations. The design process can therefore develop swiftly with the precise method of achieving objectives and testing the solutions comprehensively. SAOTA have done a substantial amount of projects abroad and have skills in achieving the project requirements set. The design architects are backed up by an advanced computer aided drawing office capable of detailed 3D analysis and presentation.

TECHNICAL

The office has developed advanced technical skills related to, i) Construction Detailing, ii) Building Services and iii) Contract Administration of projects. Further, in working on projects abroad the office has had experience with multi-disciplinary project teams made up of consultants from companies from various countries.

SYSTEMS

SAOTA have developed advanced systems for co-ordination of the projects across all stages of the architects service. This ensures that client presentations, design reviews, Technical Documentation, Tendering and Contract Administration are managed to the highest quality standards.

SAOTA also uses REVIT, the leading Building Information Modelling (BIM) software available allowing us to develop and document a building in a 3 dimensional environment. Any changes are immediately co-ordinated through the entire documentation package. It also gives us unprecedented control over the co-ordination of structure and services when working with consultants using the same platform.

Lumion is used as an architectural visualization tool which allows us to build a 3D environment and create images of each project. Furthermore impressive video presentations and live walkthroughs are created.

Together with Tenebris Lab Director, Gerard Slee, SAOTA developed LUX Walker, a software enabling designers and clients to experience their designs in virtual reality. It's a workflow tool that renders a realistic, true-to-life scale representation of a 3D model that clients can easily interact with.



SELECTED AWARDS

2019	TIDA International House of the Year	AU Double Bay	2010	MIPIM International Awards - Commendation	SN Dakar Towers
2019	Idea-Tops Global Nomination Award	ZA Kloof 119A	2009	Cape Institute for Architecture	ZA Head 1815
2018	Spice Lifestyle Honors Company of the Year	SAOTA	2009	Cape Institute for Architecture	ZA Victoria 73
2018	SAPOA Award for Innovative Excellence	ZA Clifton Terraces	2009	Cape Institute for Architecture	ZA Hatfield 109
2017	Cape Institute for Architecture - Commendation	ZA Invermark	2009	Retail Design Development Awards - Finalist	ZA Alex Junction
2016	Architizer A+ Awards: Popular Choice Award	ZA OVD919	2009	House & Leisure House of the Year Award	ZA First Crescent
2015	International Property Awards – Best Residential Development	SC Pangia Beach	2009	OPEN THINKBOX / FIRST FIX - Winner	ZA Parkwood Library
2014	SAPOA Award for Innovative Excellence	ZA New Engineering Building UCT	2009	Libera Invited Competition - Winner	HR Dubrovnik
2014	Miami Chamber of Commerce	US MIA Star	2006	South African Institute of Architects	ZA Mankgaile
2013	Cape Institute for Architecture	ZA Boma	2003	South African Institute of Architects	ZA Fisherman's 19
2012	SAIA Award for Excellence	ZA Voelklip	2003	Cape Institute for Architecture	ZA Fisherman's 19
2011	SAIA Award of Merit	CH Lake House & ZA Voelklip	1998	South African Institute of Architects	ZA Contursi Special Mention
2011	Cape Institute for Architecture	CH Lake House	1995	SAIA South Africa Institute of Architects	ZA Santer
2011	Cape Institute for Architecture	ZA Voelklip			
2011	KZN Institute for Architecture	ZA Havaan D			
2010	SAIA Award for Excellence	ZA Hatfield 109			
2010	SAIA Award of Merit	ZA Hatfield 109			



Architizer A+ Awards



SAOTA

SELECTED MEDIA COVERAGE



MEET THE TEAM

DIRECTORS



Stefan Antoni



Greg Truen



Philip Olmesdahl



Phillippe Fouche



Mark Bullivant



Logen Gordon

SENIOR ASSOCIATES



Tamaryn Fourie



Roxanne Kaye



Bobby Hugill



Dominik George



Danielle Reimers



Joe Schützer-Weissmann

ASSOCIATES

JUNIOR ASSOCIATES



Enslin Joubert



Grant Hall



Erin Gibbs



Philip Bartman

