

The only user-configurable fixed RFID tag reading software that gives you the flexibility to easily capture and stream data based on your specific business needs.

ClearStream RFID is a powerful yet easy to use RFID solution allowing you to keep track of items. Whether you want to verify items in a given location or track what enters and exits a particular room or area, ClearStream RFID can handle any of these situations with ease.

### Use ClearStream RFID for:

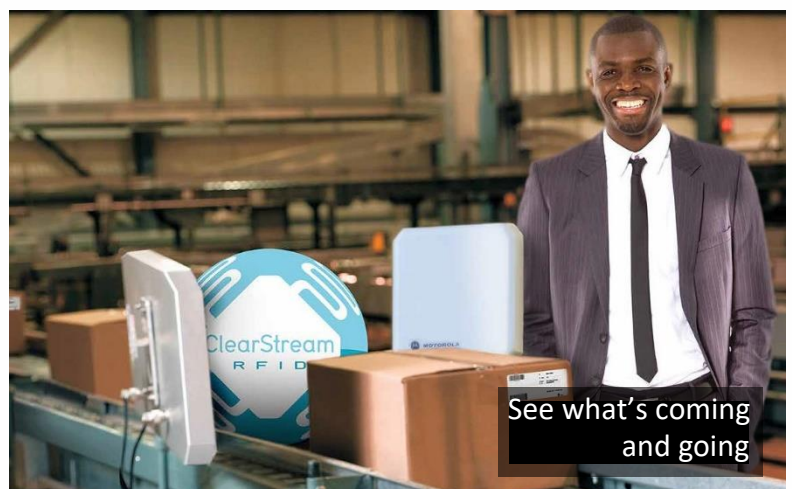
- Supply Chain/Distribution Management
- Industrial Equipment Tracking
- Medical Supply Control
- Inventory Management
- Equipment check in / out
- Vehicle Tracking / Fleet Management
- Employee check in / out
- Secure Entry Point Monitoring
- Corporate Event Attendance Tracking
- High Value Asset Control
- Retail Ingress/Egress Monitoring

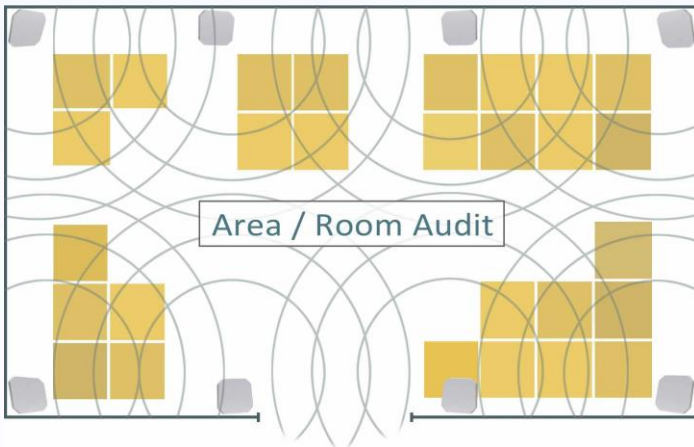
ClearStream RFID offers best-in-class RFID solutions with unmatched versatility and ease of use.

#### ClearStream RFID is compatible with the:

- Zebra FX7500, FX9600, FX9500, FX7400
- Feig LRU1002, LRU3000, LRU3500, MRU1002
- Impinj Speedway Readers
- Alien ALR-F800, ALR-9680, ALR-9900+
- Intermec IF2, IF61
- ThingMagic Mercury 6
- Any reader that supports LLRP

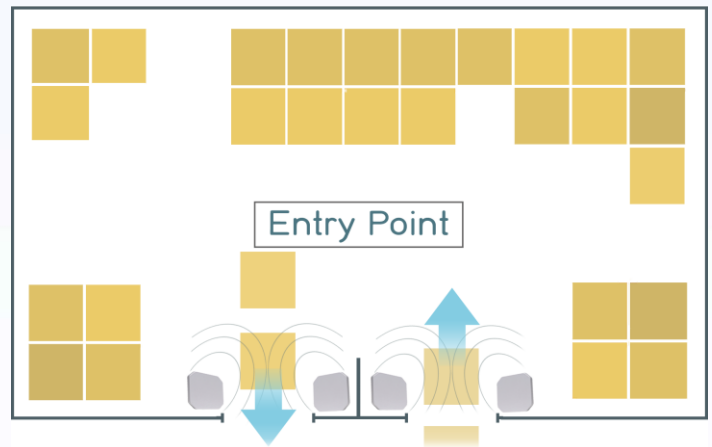
© 2000-2017 Portable Technology Solutions, LLC. All rights reserved.





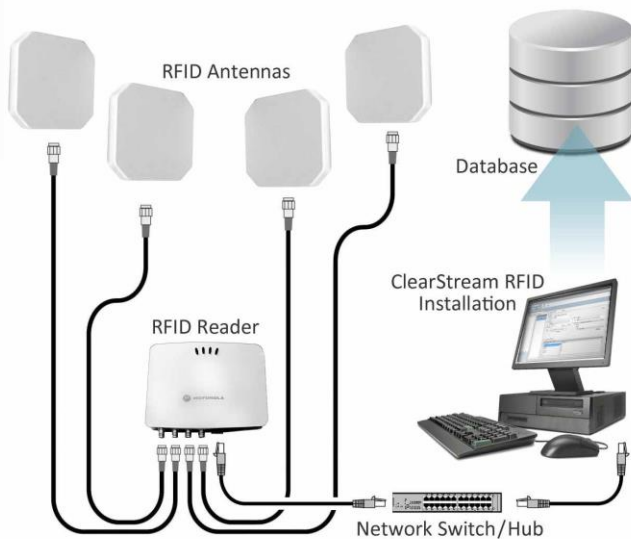
See the contents of a room or area at the press of a button.

- Keep track of your high value items.
- Quickly determine if something is missing.
- Pinpoint items located in the wrong area.



Continuously track items as they enter and exit a location.

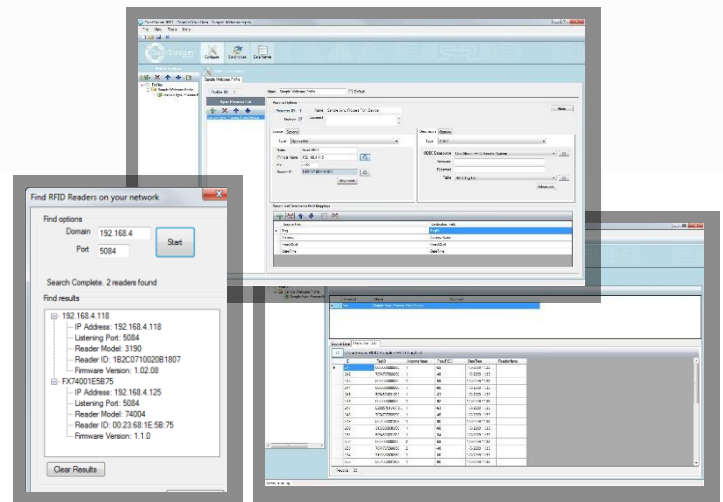
- Automated equipment Check in/Check out.
- Monitor and sound alarms based on unauthorized exit.
- Track when employees come and go.



## Fast and Easy Setup:

Just install, hook up and begin reading with a few clicks.

- Connect antennas and readers to your network.
- Install ClearStream RFID.
- Click "Find Reader."
- Click "Start."



## Highlighted Features

- Configurable I/O controls.
- Capture tag ID, Antenna name, reader name, event type and more.
- Stream tags into ODBC databases (Access, Oracle, MySQL, SQL Server and more), Microsoft Excel or tab-delimited text files.
- Filter incoming tag data.
- Tag Events / Moderation and Parent tag relationship support.