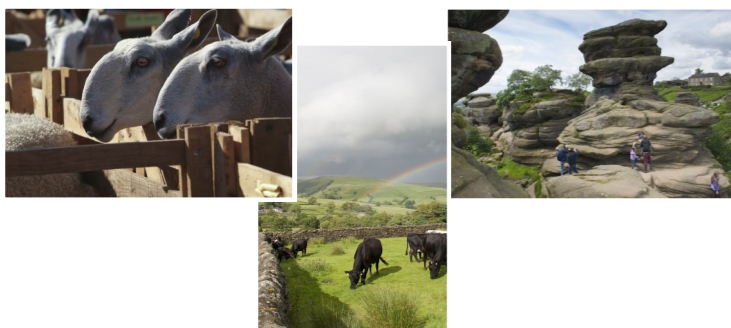




Don't leave Nidderdale until you've visited...

- 1. King Street Workshops:** A collection of skilled craftspeople producing exclusive pieces in clay, hand blown glass, precious metals, gemstones, paint, textiles and stone.
- 2. Nidderdale Museum:** An award winning museum depicting Nidderdale's bygone times.
- 3. How Stean Gorge:** An amazing, steep-sided limestone gorge known locally as "little Switzerland".
- 4. Studfold:** Situated at the head of the dale, Studfold offers activity trails and an activity centre.
- 5. Coldstones Cut:** A massive sculpture which visitors can freely explore. Overlooking the huge, working Coldstones Quarry and with spectacular scenic views.
- 6. Toft Gate Lime Kiln:** Built around 1860 and used to extract lime from locally mined limestone.
- 7. Yorke's Folly:** Built to provide work for locals when employment was scarce in the district, great views.
- 8. Nidderdale Llamas:** Offers llama trekking all year round. A unique experience for all abilities.
- 9. Brimham Rocks:** Enjoy some of the country's most awe inspiring rock formations.
- 10. Fountains Abbey:** The finest Cistercian ruin in Europe and a World Heritage Site.
- 11. Washburn Heritage Centre, Fewston:** See the heritage of the Washburn valley, including regular exhibitions and talks.
- 12. Masham:** Sample the world famous Black Sheep and Old Peculiar beers at the local breweries.

Walking: Explore the diverse scenery and wildlife of moorland, hills, valleys and reservoirs on one of the many walks. Ranging from short strolls, to the Nidderdale Way for the more adventurous, there are walks available for all abilities.



Photography kindly supplied by Paul Harris www.paulharris.com

HOTELS, INNS, GUEST HOUSES and BED & BREAKFAST continued...

The Station Hotel 01423 770254	Station Road, Birstwith HG3 3AG www.station-hotel.net	A traditional village inn, excellent cuisine, perfectly located for Harrogate and Nidderdale. A warm Yorkshire welcome.
The Wellington Inn 01423 780362	Darley HG3 2QQ www.wellington-inn.co.uk	A traditional country pub nestled in the heart of Nidderdale who boast fine food, cask beer and 12 en suite rooms.
The Willow 01423 711689	Pateley Bridge HG3 5JS www.thewillow-restaurant.com	Bed and breakfast in this 18th century building in the heart of Pateley Bridge. Traditional restaurant on site. Gateway to walks around Nidderdale.
The Yorke Arms 01423 755243	Ramsgill-in-Nidderdale HG3 5RL www.yorke-arms.co.uk	Michelin Starred Restaurant with rooms in the heart of Nidderdale. 15 comfortable bedrooms ranging from the classic traditional to the more contemporary.
The Yorkshire Dales Treehouse 07842 886378	Glasshouses HG3 5QQ Facebook: Yorkshire-Dales-Tree-House	Beautifully located with Dales views, this romantic retreat has heating, shower, WC and all you'll need for the perfect getaway.

CARAVAN, CAMPING, BUNK BARN/GROUP ACCOMMODATION

Heathfield Caravan Park 01423 711652	Pateley Bridge HG3 5PY www.heathfieldhp.co.uk	Quiet family run park (no tents) 1 mile from Pateley Bridge. Situated on Nidderdale Way, scenic walks, riding, cycling nearby.
High House Farm 01943 880483	Hardisty Hill Blubberhouses LS21 2PJ	3 fields with toilets/showers—beautiful setting surrounded by trees, with lovely views across the valley.
How Stean Gorge 01423 755666	Lofthouse HG3 5SF www.howstean.co.uk	On-site camping lets you appreciate the joys of nature. 2 Bunkhouses—one on-site and one at Scar Reservoir. Open all year.
Manor House Farm 01423 780322	Summerbridge HG3 4JS www.manorhousecaravans.co.uk	A beautiful and peaceful site in the heart of the Yorkshire Dales. Static and touring caravans and camping.
Ripley Caravan Park 01423 770050	Ripley HG3 3AU www.ripleycaravanpark.com	Family caravan and camping park with heated indoor pool on the edge of Nidderdale. Holiday homes also for sale.
Riverside Caravan 01423 711383	Pateley Bridge HG3 5HL www.riversidepateleybridge.co.uk	Touring and static caravan park, 5 minute walk from town centre. Excellent location for walking and touring.
Studfold 01423 755084	Lofthouse HG3 5SG www.studfold.com	Studfold is a Welcome to Yorkshire Award winning Caravan, Camping, Glamping Park and Group Accommodation site. Stunning countryside, quality facilities, family adventure.
The Crown Hotel 01423 755204	Middlesmoor HG3 5ST Email: crownmiddlesmoor@gmail.com	Traditional, family run pub with bed and breakfast. Also offers camping, caravanning and self-catering cottage.
Nidderdale Bunkhouse 07597 645254	Ramsgill HG3 5RH www.nidderdalebunkhouse.com	Yorkshire Premier Group Accommodation. Traditional country house for up to 20 people. Outstanding location.

Where to...

STAY

IN NIDDERDALE

2017



SELF-CATERING ACCOMMODATION

Abbey Holiday Cottages 01423 712062	Middlesmoor www.abbeyholidaycottages.com	3 cottages, all 3 bedroome sleeping 5/6 people, private off road parking, all have central heating and conservatories.
Ashfield House 01423 711491	Pateley Bridge HG3 5HJ www.ashfieldhouse.info or owners direct: Property 6520260	Sleeps 2/4, peaceful wildlife garden with private terrace. Free Wi-Fi, 5 minutes walk to shops, cafes, restaurants and pubs.
Bewerley Hall Cottage 01765 658565	9 The Green, Bewerley www.cottageinbewerley.com or owners direct: Property 6520260	Luxury holiday cottage built in 1780 with original features, Wi-Fi enabled. Welcome hamper. Dog friendly.
Bewerley Hall Farm 01423 711636/07872 493675	Bewerley HG3 5JA www.bewerleyhallfarm.co.uk	We are a grade 2 listed farmstead set in beautiful countryside, offering B&B and self catering accommodation.
Bluebell of Lofthouse 07971 358162	Lofthouse HG3 5RZ www.bluebelllofthouse.com	A romantic chocolate box cottage in the heart of Nidderdale with log burner and 2 en suite bedrooms. Ideal for couples.
Briardene 07747695305	Bewerley, Pateley Bridge HG3 5HS www.homeaway.co.uk/p84913	4 star cottage with Wi-Fi. 3 bedrooms (sleeps up to 6) and 2 bathrooms in quiet village with garden. Close to all amenities.
Claro Cottage 07801 861114 or 07825 447585 or 0113 253 0022	Back High Street, Pateley Bridge HG3 5AF www.dalesandcoastalcottages.co.uk	Listed stable conversion, courtyard setting, 2 bed (sleeps 5) bathroom, additional WC, lounge, kitchen (dishwasher, washer dryer), Wi-Fi, smart TV, BluRay.
Cobblers Cottage 07931 312387	2 Kings Court, Pateley Bridge HG3 5JW www.yorkshire-cottages.info	Cosy 4 bed cottage set in a picturesque courtyard just off High Street in Pateley Bridge, yet 5 minutes from open countryside
Cow Close Barn 01423 770850	Stripe Lane, Hartwith HG3 3EY www.cowclose-barn.co.uk	Spacious, comfortable and splendidly appointed throughout with 3 bedrooms accommodating 6 people. Nestled in the countryside in Nidderdale. Stunning views.
Greenwood Close 07801944889	Pateley Bridge HG3 5LR www.greenwoodclose.co.uk	Fully equipped luxury 5 Star Gold Award house in the heart of Pateley Bridge. Sleeps 6
Harewell Cottage 07757 789251	Glasshouses HG3 5QH www.harewellcottage.co.uk	A luxury holiday retreat for 2. Cosy and stylish with a log burning stove and free standing bath. Dogs welcome.
Helme Pasture Lodges & Cottages 01423 780279	Summerbridge HG3 4DR www.helmepasture.co.uk	Friendly family run 4 star lodges, cottages set within natural woodland. Walks, valley views, dog friendly.
High Green Farm 01423 715958	Wath Road, Pateley Bridge HG3 5PJ www.highgreen-nidderdale.co.uk	Recently converted barn provides 5 star luxury accommodation over looking The Nidderdale Way with extended views toward Gouthwaite Reservoir.
Holly House Farm Cottages 07710 125298/01423 780266	Moorcock Lane, Darley HG3 2QL www.hollyhousefarmcottages.com	Kestrel and Curlew Cottages. Outstanding views of Nidderdale in cosy cottages just outside the village of Darley.
Mount Bark Holiday Cottages 01943 880089	Menwith Hill HG3 2RL www.mountbarkcottages.com	Luxury barn conversion and cottages in secluded, rural location, overlooking private lake on smallholding. 15 mins to Harrogate.
Nidderdale Cottage 07597645254	Ramsgill HG3 5RH www.nidderdalebunkhouse.com/cottage	Traditional detached Yorkshire cottage high on the valley side sleeping 6, 3 bedrooms, AGA stove, private parking. Stunning valley views.
Oxen Close Farm 01423 780207	Dairy Lane, Darley, Harrogate HG3 2QP	Barney's Cottage: 1 double/1 twin, both rooms are en suite. Robbie's Retreat: 1 double room on the ground floor.
Shire Cottage 07801 861114 or 07825 447585	The Stables, Pateley Bridge HG3 5AF www.dalesandcoastalcottages.co.uk	Listed stable conversion. Courtyard setting with 2 bedrooms (sleeps 5). Bathroom, additional WC, kitchen, Wi-Fi, smart TV, BluRay
The Crown Hotel 01423 755204	Middlesmoor HG3 5ST Email: crownmiddlesmoor@gmail.com	Traditional, family run pub with bed and breakfast. Also offers camping, caravanning and self-catering cottage.

SELF-CATERING ACCOMMODATION continued.....

The Willow 01423 711689	Park Road, Pateley Bridge HG3 5JS www.thewillow-restaurant.com	Apartment and cottage in the heart of Pateley Bridge. Traditional restaurant on site in this 18th century cottage. Gateway to walks around Nidderdale
Woodmanwray Chapel 01423 780186	Dike Lane, Dacre HG3 4EY www.cottageinnidderdale.co.uk	Luxury conversion of former Methodist Chapel. 2 bedrooms, 2 bathrooms, sleeps 6. Quiet location with garden, parking, cycle storage.
Yates Cottage 07770 613439 or 01943 880550	Yates House, Braithwaite HG3 4AN andysuemurtagh@btopenworld.com	Idyllic detached fully refurbished double & twin rooms, excellent facilities indoor and outdoor. Owners direct E19588
HOTELS, INNS, GUEST HOUSES and BED & BREAKFAST		
Bewerley Hall Farm 01423 711636/07872 493675	Bewerley HG3 5JA www.bewerleyhallfarm.co.uk	We are a Grade 2 listed farmstead set in beautiful countryside, offering B&B and self catering accommodation.
Grassfield Hall 07958 038134	Pateley Bridge HG3 5HL www.grassfield-hall.co.uk	Luxury accommodation on the edge of Pateley Bridge. A historic home with a contemporary style, offering a stay with a difference.
Harefield Hall 01423 711429	Ripon Road, Pateley Bridge HG3 5QE www.harefieldhall.com	A family run 16th Century guest house with en suite rooms, beautiful views, licensed bar, restaurant, and a very warm welcome.
High Green Farm 01423 715958	Wath Road, Pateley Bridge HG3 5PJ www.highgreen-nidderdale.co.uk	Sue and Alan welcome visitors to their beautiful home and offer two elegantly furnished rooms on a bed and breakfast basis. Stunning views overlooking Nidderdale.
High Winsley Farm 01423 770376	Brimham Rocks Road, HG3 3EP www.highwinsleyfarm.co.uk	Warm welcome, good food, comfortable en suite rooms. Set in scenic peaceful countryside close to Pateley Bridge and Ripon.
Lyndale Guest House 01423 712657	Pateley Bridge HG3 5AT www.lyndaleguesthouse.com	Beautiful Victorian guest house. Central to Pateley Bridge. Warm welcome with comfy beds and hearty breakfast.
Roslyn House 01423 711374	9 King St, Pateley Bridge HG3 5AT www.roslynhouse.co.uk	We are located a few minutes from the High Street, suitable for a quiet relaxing stay. Check our reviews on Trip Advisor.
Scaife Hall Farm 01943 880354/07882 595870	Blubberhouses, Otley LS21 2PL www.scaifehallfarm.co.uk	Working farm in quiet rural location. Award winning breakfasts. Good pubs nearby. Ideal for visiting Yorkshire Dales, Harrogate, York, Leeds.
Sportsman's Arms 01423 711306	Wath-in-Nidderdale HG3 5PP www.sportsmans-arms.co.uk	Yorkshire Life Magazine 'Dining Inn of The Year 2016' Restaurant, bar meals and our beautiful garden. Eleven individually decorated rooms. We look forward to welcoming you.
Talbot House 01423 711597	High Street, Pateley Bridge HG3 5AL www.talbot-house.co.uk	Former 18th century coaching inn, quality en suite rooms with TV, tea/coffee making facilities and excellent home cooked breakfasts.
The Crown Hotel 01423 755206	Lofthouse HG3 5RZ	Traditional Inn on the Nidderdale Way. Unpretentious home cooking every lunch and dinner. Open fires, rustic charm.
The Crown Hotel 01423 755204	Middlesmoor HG3 5ST Email: crownmiddlesmoor@gmail.com	Traditional, family run pub with bed and breakfast. Also offers camping, caravanning and self-catering cottage.
The Crown Hotel 01423 712455	Pateley Bridge HG3 5AP www.thecrowninnpateleybridge.co.uk	A small friendly 17th century inn, excellent homemade food, Yorkshire ales, quality wine, spirits and open fire. 4 en suite rooms all light and airy with TV and tea/coffee making facilities.
The Firs 01423 781715	Summerbridge HG3 4JF www.thefirsummerbridge.co.uk	A warm welcome awaits at The Firs B&B and tearoom. We have 2 double en suite rooms.
The Moorhouse 01765 658371	Dallowgill, Nr Ripon HG4 3RH www.moorhousebnb.co.uk	Warm welcome at our traditional country lodge. Luxurious stay with delicious food and spectacular moorland views.

CONTINUED...