

STEEL RANGE



- Full range of BZP pipe clamps, with or without Rubber lining for noise insulation.
- Sizes available 1/4" n.b. (12 – 14mm o.d.) – 8" n.b. (215mm – 225mm o.d.).
- For heavy duty applications, a wider range of BZP split band hangers are available with or without bosses from 1/2" n.b. – 14" n.b. with all sizes covered in between.

STEEL RANGE

RUBBER LINED CLIPS BZP M8/M10 Standard Type 2 Screw Fixing



	Clip size mm	Copper tube O.D.	Steel tube NB	Bag quantity	Pack quantity	part no.
	12-14	12	1/4"	50	200	RZ1226D
	15-19	15	3/8"	50	200	RZ1526D
	20-25	22	1/2"	50	200	RZ2226D
	26-30	28	3/4"	50	200	RZ2826D
	32-36	35	1"	50	200	RZ3526D
	38-43	42	1 1/4"	25	100	RZ4226D
	47-51	-	1 1/2"	25	100	RZ1326D
	53-58	54	-	25	50	RZ5426D
	60-64	-	2"	25	50	RZ1426D
	67-72	67	-	20	40	RZ6726D
	75-80	76	2 1/2"	20	40	RZ7626D
	81-86	-	-	10	50	RZ8326D
	87-92	-	3"	10	50	RZ1726D
	99-105	-	-	10	50	RZ10026D
	107-112	108	-	10	50	RZ9826D
	113-118	-	4"	10	50	RZ1826D
	125-130	-	-	5	50	RZ12526D
	132-137	133	-	5	50	RZ9326D
	138-142	-	5"	5	50	RZ1926D
	148-152	-	-	5	50	RZ15026D
	159-166	159	6"	5	50	RZ9926D
	168-175	-	-	5	25	RZ2026D
	176-185	-	-	5	10	RZ18026D
	199-212	-	-	5	10	RZ20026D
	215-225	-	8"	5	10	RZ2126D
	249-254	-	-	5	10	RZ25026D
Breaking load	600kg					
SWL	200kg					
Dimensions	(12mm - 100mm) 20mm x 2.0mm					
	(108mm+) 20mm x 2.5mm					

Technical characteristics of rubber.

- **Material** EPDM
- **Noise Reduction** 18db (Noise insulation in accordance with DIN4109)
- **Elongation rule (stretch)** >250%
- **Temperature resistance** -40°C to + 110°C
- **Fire resistance** Class B2
- **Ozone resistance** Grade 0

UNLINED CLIPS - BZP M8/M10 Standard Type 2 Screw Fixing

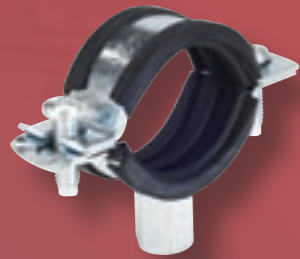


	Clip size mm	Steel tube metric NB	Steel tube NB	Bag quantity	Pack quantity	part no.
	15-19	10	3/8"	50	200	SZ0325D
	20-25	15	1/2"	50	200	SZ0425D
	26-30	20	3/4"	50	200	SZ0725D
	32-36	25	1"	50	200	SZ0925D
	38-43	32	1 1/4"	25	200	SZ1125D
	47-51	40	1 1/2"	25	100	SZ1325D
	53-58	-	-	25	100	SZ5425D
	60-64	50	2"	25	100	SZ1425D
	67-72	-	-	25	100	SZ7025D
	75-80	65	2 1/2"	25	100	SZ1625D
	81-86	-	-	20	100	SZ8325D
	87-92	80	3"	20	100	SZ1725D
	90-95	-	-	20	60	SZ9025D
	99-105	-	-	10	50	SZ10025D
	107-112	-	-	10	50	SZ11025D
	113-118	100	4"	10	50	SZ1825D
	116-121	-	-	10	50	SZ12025D
	125-130	-	-	10	50	SZ12525D
	132-137	-	-	10	50	SZ9325D
	138-142	125	5"	5	50	SZ1925D
	148-152	-	-	5	50	SZ15025D
	159-166	150	6"	5	50	SZ9925D
	168-175	-	-	5	50	SZ2025D
	176-185	-	-	5	10	SZ18025D
	199-212	-	-	5	10	SZ20025D
	215-226	200	8"	5	10	SZ2125D
	224-235	-	-	5	10	SZ23025D
	249-254	-	-	5	10	SZ25025D
Breaking load	600kg					
SWL	200kg					
Dimensions	(3/8" - 100mm) 20mm x 2mm					
	(108mm+) 20mm x 2.5mm					

STEEL RANGE

EASIFIX RUBBER LINED CLIPS

BZP M8/M10 Rapid Fix - 2 Screw Fixing.



Clip size mm	Copper tube O.D.	Steel tube NB	Bag quantity	Pack quantity	part no.
12-14	12	1/4"	50	200	ER1226D
15-19	15	3/8"	50	200	ER1526D
20-25	22	1/2"	50	200	ER2226D
26-30	28	3/4"	50	200	ER2826D
32-36	35	1"	50	200	ER3526D
38-43	42	1 1/4"	25	100	ER4226D
47-51	-	1 1/2"	25	100	ER1326D
53-58	54	-	25	50	ER5426D
60-64	-	2"	25	50	ER1426D
67-72	67	-	20	40	ER6726D
75-80	76	2 1/2"	20	40	ER7626D
81-86	-	-	10	50	ER8326D
87-92	-	3"	10	50	ER1726D
99-105	-	-	10	50	ER10026D
107-112	108	-	10	50	ER9826D
113-118	-	4"	10	50	ER1826D
125-130	-	-	5	50	ER12526D
132-137	133	-	5	50	ER9326D
138-142	-	5"	5	50	ER1926D
148-152	-	-	5	50	ER15026D
159-166	159	6"	5	50	ER9926D
168-175	-	-	5	25	ER2026D
199-212	-	-	5	10	ER20026D
215-225	-	8"	5	10	ER2126D

Dimensions (12mm - 42mm)
20mm x 1.5mm

(1 1/2" - 100mm)
20mm x 1.75mm

(108mm+)
20mm x 2.5mm

EASIFIX UNLINED CLIPS - BZP M8/M10

Rapid Fix - 2 Screw Fixing.



Clip size mm	Steel tube metric NB	Steel tube NB	Bag quantity	Pack quantity	part no.
15-19	10	3/8"	50	200	EU0325D
20-25	15	1/2"	50	200	EU0425D
26-30	20	3/4"	50	200	EU0725D
32-36	25	1"	50	200	EU0925D
38-43	32	1 1/4"	25	200	EU1125D
47-51	40	1 1/2"	25	100	EU1325D
53-58	-	-	25	100	EU5425D
60-64	50	2"	25	100	EU1425D
67-72	-	-	25	100	EU7025D
75-80	65	2 1/2"	25	100	EU1625D
81-86	-	-	20	100	EU8325D
87-92	80	3"	20	100	EU1725D
90-95	-	-	20	60	EU9025D
99-105	-	-	10	50	EU10025D
107-112	-	-	10	50	EU11025D
113-118	100	4"	10	50	EU1825D
116-121	-	-	10	50	EU12025D
125-130	-	-	10	50	EU12525D
132-137	-	-	10	50	EU9325D
138-142	125	5"	5	50	EU1925D
148-152	-	-	5	50	EU15025D
159-166	150	6"	5	50	EU9925D
168-175	-	-	5	50	EU2025D
199-212	-	-	5	10	EU20025D
215-226	200	8"	5	10	EU2125D
224-235	-	-	5	10	EU23025D

Dimensions (3/8" - 1 1/4")
20mm x 1.5mm

(1 1/2" - 100mm)
20mm x 1.75mm

(108mm+)
20mm x 2.5mm

STEEL RANGE

RUBBER STRIP



Width	Roll length	part no.
20mm	100m	RZ2065

GRIP CLIPS BZP M8/M10 Hinged 1 Screw Fixing.



Breaking load 300kg
SWL 100kg
Dimensions 20mm x 1.5mm

Clip size mm	Copper tube O.D.	Steel tube NB	Bag quantity	Pack quantity	part no.
15-19	15	3/8"	50	500	RZ1527D
20-25	22	1/2"	50	500	RZ2227D
26-30	28	3/4"	50	500	RZ2827D
32-37	35	1"	50	400	RZ3527D
38-43	42	1 1/4"	25	300	RZ4227D
47-51	-	1 1/2"	25	250	RZ1327D
54-59	54	-	25	200	RZ5427D
60-64	-	2"	25	200	RZ1427D

DOUBLE BOSSED RUBBER LINED CLAMPS - BZP M8/M10



Breaking load 600kg
SWL 200kg
Dimensions (15mm - 3")
20mm x 2mm
(100mm+)
20mm x 2.5mm

Clip size mm	Copper tube O.D.	Steel tube NB	Bag quantity	Pack quantity	part no.
15-19	15	3/8"	50	200	RZ1534D
20-25	22	1/2"	50	200	RZ2234D
26-30	28	3/4"	50	200	RZ2834D
32-36	35	1"	50	200	RZ3534D
38-43	42	1 1/4"	25	100	RZ4234D
47-51	-	1 1/2"	25	100	RZ1334D
53-58	54	-	25	50	RZ5434D
60-64	-	2"	10	50	RZ1434D
75-80	76	2 1/2"	10	50	RZ7634D
87-92	-	3"	10	50	RZ1734D
99-105	-	-	10	50	RZ10034D
113-118	-	4"	10	50	RZ1834D

DOUBLE BOSSED UNLINED CLAMPS - BZP M8/M10



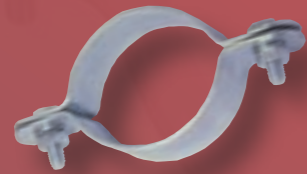
Breaking load 600kg
SWL 200kg
Dimensions (15mm - 3")
20mm x 2mm
(100mm+)
20mm x 2.5mm

Clip size mm	Steel tube NB	Bag quantity	Pack quantity	part no.
15-19	3/8"	50	200	SZ0334D
20-25	1/2"	50	200	SZ0434D
26-30	3/4"	25	200	SZ0734D
32-36	1"	25	200	SZ0934D
38-43	1 1/4"	25	200	SZ1134D
47-51	1 1/2"	25	100	SZ1334D
60-64	2"	25	100	SZ1434D
75-80	2 1/2"	25	100	SZ1634D
87-92	3"	20	100	SZ1734D
99-105	-	10	50	SZ10034D
113-118	4"	10	50	SZ1834D

Please note: Other sizes available to order made in-house. Please contact sales for more information.

STEEL RANGE

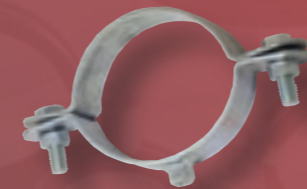
BZP SPLIT BAND HANGERS



Metric NB size	Steel tube size	To suit O.D. mm	Material size mm	part no.
15mm	1/2"	21	25x3	SZ0446
20mm	3/4"	27	25x3	SZ0746
25mm	1"	34	25x3	SZ0946
32mm	1 1/4"	42	30x3	SZ1146
40mm	1 1/2"	48	30x3	SZ1346
50mm	2"	60	30x3	SZ1446
65mm	2 1/2"	76	40x3	SZ1646
80mm	3"	89	40x3	SZ1746
100mm	4"	114	40x3	SZ1846
125mm	5"	140	40x5	SZ1946
150mm	6"	165	40x5	SZ2046
-	-	178	50x6	SZ17846
-	-	186	50x6	SZ18646
-	-	193	50x6	SZ19346
-	-	199	50x6	SZ19946
-	-	208	50x6	SZ20846
200mm	8"	219	50x6	SZ2146
-	-	225	50x6	SZ22546
-	-	232	50x6	SZ23246
-	-	244	50x6	SZ24446
-	-	259	50x6	SZ25946
250mm	10"	273	50x6	SZ8046
300mm	12"	323	50x6	SZ8246
350mm	14"	355	50x6	SZ8446

Please note: Other sizes available made specially to order.

BZP BOSSED SPLIT BAND HANGERS



Metric NB size	Steel tube size	To suit O.D. mm	Material size mm	Boss thread	part no.
15mm	1/2"	21	25x3	M10	G6204M
20mm	3/4"	27	25x3	M10	G6207M
25mm	1"	34	25x3	M10	G6209M
32mm	1 1/4"	42	30x3	M10	G6211M
40mm	1 1/2"	48	30x3	M10	G6213M
50mm	2"	60	30x3	M10	G6214M
65mm	2 1/2"	76	40x3	M12	G6216M
80mm	3"	89	40x3	M12	G6217M
100mm	4"	114	40x3	M12	G6218M
125mm	5"	140	40x5	M12	G6219M
150mm	6"	165	40x5	M12	G6220M
-	-	178	50x6	M12	G62178M
-	-	186	50x6	M12	G62186M
-	-	193	50x6	M12	G62193M
-	-	199	50x6	M12	G62199M
-	-	208	50x6	M12	G62208M
200mm	8"	219	50x6	M16	G6221M
-	-	225	50x6	M16	G62225M
-	-	232	50x6	M16	G62232M
-	-	244	50x6	M16	G62244M
-	-	259	50x6	M16	G62259M
250mm	10"	273	50x6	M16	G6280M
300mm	12"	323	50x6	M16	G6282M
350mm	14"	355	50x6	M16	G6284M

Please note: Other sizes available made specially to order.

STEEL RANGE

'U' BOLTS BZP STEEL - c/w 2 nuts



Other threads available on request

Steel tube NB	Thread size	Inside leg (mm)	Thread length (mm)	Bag quantity	Pack quantity	part no.
1/2"	M6	21	30	100	1000	SZ0416
3/4"	M6	27	30	100	800	SZ0716
1"	M6	34	30	100	600	SZ0916
1 1/4"	M10	45	40	50	200	SZ1116
1 1/2"	M10	51	40	50	150	SZ1316
2"	M10	60	40	50	150	SZ1416
2 1/2"	M10	76	40	25	100	SZ1616
3"	M12	90	40	25	75	SZ1716
4"	M12	114	40	20	60	SZ1816
5"	M12	140	40	10	40	SZ1916
6"	M12	170	50	10	20	SZ2016
8"	M16	225	50	10	-	SZ2116
10"	M16	277	50	5	-	SZ8016
12"	M16	324	50	5	-	SZ8216
14"	M16	365	75	5	-	SZ8416
16"	M16	415	85	5	-	SZ8616
18"	M16	465	85	5	-	SZ8816

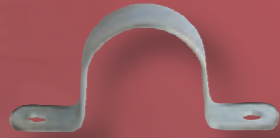
EXTENDED LEG BZP 'U' BOLTS - c/w 4 nuts



Steel tube NB	Thread size	Inside leg (mm)	Thread length (mm)	Bag quantity	Pack quantity	part no.
1/2"	M6	21	75	100	1000	SZ0440
3/4"	M6	27	75	100	800	SZ0740
1"	M6	34	75	100	600	SZ0940
1 1/4"	M10	45	85	50	200	SZ1140
1 1/2"	M10	51	85	50	150	SZ1340
2"	M10	60	85	50	150	SZ1440
2 1/2"	M10	76	85	25	100	SZ1640
3"	M12	90	90	25	75	SZ1740
4"	M12	114	90	20	60	SZ1840
5"	M12	140	90	20	40	SZ1940
6"	M12	170	90	10	20	SZ2040
8"	M16	225	95	10	-	SZ2140
10"	M16	277	95	5	-	SZ8040
12"	M16	324	95	5	-	SZ8240
14"	M16	365	-	-	-	SZ8440
16"	M16	415	-	-	-	SZ8640
18"	M16	465	-	-	-	SZ8840

STEEL RANGE

HEAVY SADDLES FOR STEEL TUBE



NB size	Steel tube NB	Material size mm	Bag quantity	part no.
15mm	1/2"	25x3	50	G6404
20mm	3/4"	25x3	50	G6407
25mm	1"	25x3	50	G6409
32mm	1 1/4"	30x3	50	G6411
40mm	1 1/2"	30x3	25	G6413
50mm	2"	30x3	25	G6414
65mm	2 1/2"	40x3	20	G6416
80mm	3"	40x3	20	G6417
100mm	4"	40x3	10	G6418
125mm	5"	40x5	10	G6419
150mm	6"	40x5	5	G6420
200mm	8"	50x6	5	G6421
250mm	10"	50x6	5	G6480
300mm	12"	50x6	5	G6482

BZP FILBOWS - FM Approved



NB size	Steel tube NB	Through hole size	Bag quantity	Pack quantity	part no.
15mm	1/2"	11mm	50	200	SZ0435
20mm	3/4"	11mm	50	200	SZ0735
25mm	1"	11mm	25	100	SZ0935
32mm	1 1/4"	11mm	25	100	SZ1135
40mm	1 1/2"	11mm	20	80	SZ1335
50mm	2"	11mm	20	60	SZ1435
65mm	2 1/2"	11mm	10	40	SZ1635
80mm	3"	11mm	5	50	SZ1735
100mm	4"	11mm	5	50	SZ1835
125mm	5"	13mm	5	30	SZ1935
150mm	6"	13mm	5	20	SZ2035
200mm	8"	18mm	-	-	SZ2135
250mm	10"	22mm	-	-	SZ8035
300mm	12"	-	-	-	SZ8235

STEEL BZP SADDLES For Steel Tube BS1387



NB size	Bag quantity	Pack quantity	part no.
1/4"	100	1000	SZ0206
3/8"	100	1000	SZ0306
1/2"	100	1000	SZ0406
3/4"	100	1000	SZ0706
1"	100	1000	SZ0906
1 1/4"	100	500	SZ1106
1 1/2"	50	500	SZ1306
2"	50	500	SZ1406

STEEL RANGE

BZP STEEL FEMALE BACKPLATES



Thread size	Bag quantity	Pack quantity	part no.
M8/M10	100	500	SZ0804/M8

BZP STEEL MALE BACKPLATES



Thread size	Bag quantity	part no.
M8	100	G4508
M10	100	G4510

COLLIER CABLE CLIPS M6



Clip size mm	Steel tube NB	Pack quantity	part no.
8	-	2000	SP0832
10	-	2000	SP1032
14	-	2000	SP1432
15	1/4"	2000	SP1532
16	-	2000	SP1632
18	3/8"	1500	SP1832
20	-	1500	SP2032
22	1/2"	1400	SP2232
24	-	1400	SP2432
26	-	1300	SP2632
28	3/4"	1300	SP2832
30	-	1200	SP3032
32	-	1000	SP3232
35	1"	1000	SP3532
38	-	1000	SP3832
42	1 1/4"	900	SP4232
47	-	800	SP4732
50	-	700	SP5032
54	-	700	SP5432
60	2"	600	SP6032
63	-	600	SP6332
67	-	500	SP6732

ZINC AND PASSIVATE FINISH
 Spacing Roses, flat or conical available on request.
 Double Collier Clips available on request.